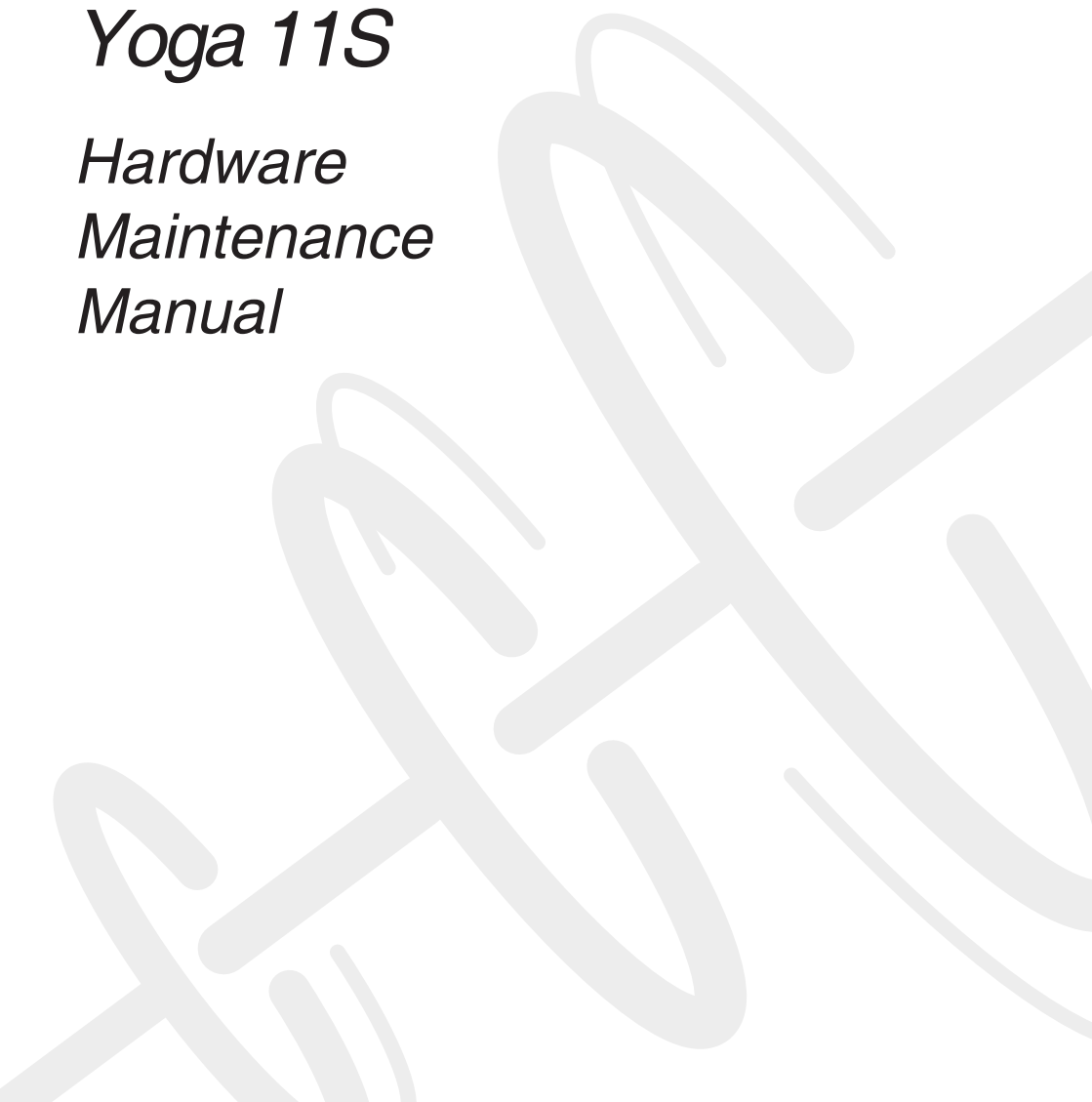


***lenovo***

*Lenovo IdeaPad  
Yoga 11S*

*Hardware  
Maintenance  
Manual*



**Note:**

Before using this information and the product it supports, be sure to read the general information under “Notices” on page 72.

**First Edition (April, 2013)**

**© Copyright Lenovo 2013. All rights reserved.**

LIMITED AND RESTRICTED RIGHTS NOTICE: If data or software is delivered pursuant a General Services Administration “GSA” contract, use, reproduction, or disclosure is subject to restrictions set forth in Contract No. GS-35F-05925.

© 2013 Lenovo

---

# Contents

---

<b>About this manual</b> .....	iv	1110 Fan and Heat Sink assembly .....	49
<b>Safety information</b> .....	<b>1</b>	1120 System board .....	51
General safety .....	2	1130 IO board and DC-in board .....	53
Electrical safety .....	3	1140 LCD unit .....	55
Safety inspection guide .....	5	<b>Locations</b> .....	58
Handling devices that are sensitive to electrostatic discharge .....	6	Front view and right-side view .....	58
Grounding requirements .....	6	Bottom and Left-side view .....	59
Safety notices: multilingual translations .....	7	<b>Parts list</b> .....	60
Laser compliance statement .....	14	Overall .....	61
<b>Important service information</b> .....	<b>16</b>	Keyboard .....	64
Strategy for replacing FRUs .....	16	Miscellaneous parts .....	66
Important notice for replacing a system board .....	17	Screws .....	67
Important information about replacing RoHS compliant FRUs .....	18	AC adapters .....	68
.....	18	<i>Table 9. Parts list—Miscellaneous parts</i> .....	68
.....	18	Power cords .....	69
<b>General checkout</b> .....	<b>19</b>	<b>Notices</b> .....	<b>72</b>
What to do first .....	20	Trademarks .....	73
Power system checkout .....	21		
Checking the AC adapter .....	21		
Checking operational charging .....	21		
<b>Related service information</b> .....	<b>23</b>		
Restoring the factory contents by using OneKey Recovery .....	23		
Restore of factory default .....	23		
Passwords .....	24		
Power-on password .....	24		
Supervisor password .....	24		
Power management .....	25		
Screen blank mode .....	25		
Sleep (standby) mode .....	25		
<b>Lenovo IdeaPad Yoga 11S</b> .....	<b>26</b>		
Specifications .....	26		
Status indicators .....	28		
Function key combinations .....	29		
FRU replacement notices .....	30		
Screw notices .....	30		
Removing and replacing an FRU .....	31		
1010 Dummy card .....	32		
1020 Keyboard .....	33		
1030 Keyboard bezel .....	35		
1040 Power board and rotation button board .....	37		
1050 DIMM .....	39		
1060 Battery pack .....	40		
1070 SSD .....	43		
1080 PCI Express Mini Card for wireless LAN .....	44		
1090 Speakers .....	46		
1100 Antenna assembly .....	48		

---

## About this manual

---

This manual contains service and reference information for the following Lenovo IdeaPad product:

**Lenovo IdeaPad Yoga 11S**

Use this manual to troubleshoot problems.

The manual is divided into the following sections:

- The common sections provide general information, guidelines, and safety information required for servicing computers.
- The product-specific section includes service, reference, and product-specific parts information.

**Important:**

This manual is intended only for trained servicers who are familiar with Lenovo IdeaPad products. Use this manual to troubleshoot problems effectively.

Before servicing a Lenovo IdeaPad product, make sure to read all the information under “Safety information” on page 1 and “Important service information” on page 16.

---

## **Safety information**

---

This chapter presents the following safety information that you need to get familiar with before you service an Lenovo IdeaPad Yoga 11S computer:

- “General safety” on page 2
- “Electrical safety” on page 3
- “Safety inspection guide” on page 5
- “Handling devices that are sensitive to electrostatic discharge” on page 6
- “Grounding requirements” on page 6
- “Safety notices: multilingual translations” on page 7
- “Laser compliance statement” on page 14

## General safety

Follow these rules below to ensure general safety:

- Observe a good housekeeping in the area where the machines are put during and after the maintenance.
- When lifting any heavy object:
  1. Make sure that you can stand safely without slipping.
  2. Distribute the weight of the object equally between your feet.
  3. Use a slow lifting force. Never move suddenly or twist when you attempt to lift it.
  4. Lift it by standing or pushing up with your leg muscles; this action could avoid the strain from the muscles in your back. Do not attempt to lift any object that weighs more than 16 kg (35 lb) or that you think is too heavy for you.
- Do not perform any action that causes hazards to the customer, or that makes the machine unsafe.
- Before you start the machine, make sure that other service representatives and the customer are not in a hazardous position.
- Place removed covers and other parts in a safe place, keeping them away from all personnel, while you are servicing the machine.
- Keep your toolcase away from walk areas so that other people will not trip it over.
- Do not wear loose clothing that can be trapped in the moving parts of the machine. Make sure that your sleeves are fastened or rolled up above your elbows. If your hair is long, fasten it.
- Insert the ends of your necktie or scarf inside clothing or fasten it with the nonconductive clip, about 8 centimeters (3 inches) from the end.
- Do not wear jewelry, chains, metal-frame eyeglasses, or metal fasteners for your clothing.

**Attention:** Metal objects are good electrical conductors.
- Wear safety glasses when you are hammering, drilling, soldering, cutting wire, attaching springs, using solvents, or working in any other conditions that may be hazardous to your eyes.
- After service, reinstall all safety shields, guards, labels, and ground wires. Replace any safety device that is worn or defective.
- Reinstall all covers correctly before returning the machine to the customer.
- Fan louvers on the machine help to prevent the overheating of internal components. Do not obstruct fan louvers or cover them with labels or stickers.

## Electrical safety

Observe the following rules when working on electrical equipments.

### Important:

Use only approved tools and test equipments. Some hand tools have handles covered with a soft material that does not insulate you when working with live electrical currents.

Many customers have rubber floor mats near their machines that contain small conductive fibers to decrease electrostatic discharges. Do not use such kind of mat to protect yourself from electrical shock.

- Find the room emergency power-off (EPO) switch, disconnecting the switch or electrical outlet. If an electrical accident occurs, you can then operate the switch or unplug the power cord quickly.
- Do not work alone under hazardous conditions or near the equipment that has hazardous voltages.
- Disconnect all power before:
  - Performing a mechanical inspection
  - Working near power supplies
  - Removing or installing main units
- Before you start to work on the machine, unplug the power cord. If you cannot unplug it, ask the customer to power-off the wall box that supplies power to the machine, and to lock the wall box in the off position.
- If you need to work on a machine that has exposed electrical circuits, observe the following precautions:
  - Ensure that another person, familiar with the power-off controls, is near you.
 

**Attention:** Another person must be there to switch off the power, if necessary.
  - Use only one hand when working with powered-on electrical equipment; keep the other hand in your pocket or behind your back.
 

**Attention:** An electrical shock can occur only when there is a complete circuit. By observing the above rule, you may prevent a current from passing through your body.
  - When using testers, set the controls correctly and use the approved probe leads and accessories for that tester.
  - Stand on suitable rubber mats (obtained locally, if necessary) to insulate you from grounds such as metal floor strips and machine frames.

Observe the special safety precautions when you work with very high voltages; instructions for these precautions are in the safety sections of maintenance information. Be extremely careful when you measure the high voltages.

- Regularly inspect and maintain your electrical hand tools for safe operational condition.
- Do not use worn or broken tools and testers.
- Never assume that power has been disconnected from a circuit. First, check it to make sure that it has been powered off.

- Always look carefully for possible hazards in your work area. Examples of these hazards are moist floors, nongrounded power extension cables, power surges, and missing safety grounds.
- Do not touch live electrical circuits with the reflective surface of a plastic dental mirror. The surface is conductive; such touching can cause personal injury and machine damage.
- Do not service the following parts with the power on when they are removed from their normal operating places in a machine:
  - Power supply units
  - Pumps
  - Blowers and fans
  - Motor generatorsand similar units. (This practice ensures correct grounding of the units.)
- If an electrical accident occurs:
  - Caution: do not become a victim yourself.
  - Switch off the power.
  - Send the victim to get medical aid.



## Safety inspection guide

The purpose of this inspection guide is to assist you in identifying potential unsafe conditions. As each machine was designed and built, required safety items were installed to protect users and service personnel from injury. This guide addresses only those items. You should use good judgment to identify potential safety hazards according to the attachment of non-Lenovo IdeaPad features or options not covered by this inspection guide.

If any unsafe conditions are present, you must determine how serious the apparent hazard could be and whether you can continue without first correcting the problem.

Consider these conditions and the safety hazards they present:

- Electrical hazards, especially primary power (primary voltage on the frame can cause serious or fatal electrical shock)
- Explosive hazards, such as a damaged CRT face or a bulging capacitor
- Mechanical hazards, such as loose or missing hardware

To determine whether there are any potential unsafe conditions, use the following checklist at the beginning of every service task. Begin the checks with the power off, and the power cord disconnected.

Checklist:

1. Check exterior covers for damage (loose, broken, or sharp edges).
2. Turn off the computer. Disconnect the power cord.
3. Check the power cord for:
  - a. A third-wire ground connector in good condition. Use a meter to measure third-wire ground continuity for 0.1 ohm or less between the external ground pin and the frame ground.
  - b. The power cord should be the type specified in the parts list.
  - c. Insulation must not be frayed or worn.
4. Check for cracked or bulging batteries.
5. Remove the cover.
6. Check for any obvious non-Lenovo IdeaPad alterations. Use good judgment as to the safety of any non-Lenovo IdeaPad alterations.
7. Check inside the unit for any obvious unsafe conditions, such as metal filings, contamination, water or other liquids, or signs of fire or smoke damage.
8. Check for worn, frayed, or pinched cables.
9. Check that the power-supply cover fasteners (screws or rivets) have not been removed or tampered with.

### Handling devices that are sensitive to electrostatic discharge

Any computer part containing transistors or integrated circuits (ICs) should be considered sensitive to electrostatic discharge (ESD). ESD damage can occur when there is a difference in charge between objects. Protect against ESD damage by equalizing the charge so that the machine, the part, the work mat, and the person handling the part are all at the same charge.

**Notes:**

1. Use product-specific ESD procedures when they exceed the requirements noted here.
2. Make sure that the ESD protective devices you use have been certified (ISO 9000) as fully effective.

When handling ESD-sensitive parts:

- Keep the parts in protective packages until they are inserted into the product.
- Avoid contact with other people.
- Wear a grounded wrist strap against your skin to eliminate static on your body.
- Prevent the part from touching your clothing. Most clothing is insulative and retains a charge even when you are wearing a wrist strap.
- Use the black side of a grounded work mat to provide a static-free work surface. The mat is especially useful when handling ESD-sensitive devices.
- Select a grounding system, such as those listed below, to provide protection that meets the specific service requirement.

**Note:**

The use of a grounding system to guard against ESD damage is desirable but not necessary.

- Attach the ESD ground clip to any frame ground, ground braid, or green-wire ground.
- When working on a double-insulated or battery-operated system, use an ESD common ground or reference point. You can use coax or connector-outside shells on these systems.
- Use the round ground prong of the ac plug on ac-operated computers.

### Grounding requirements

Electrical grounding of the computer is required for operator safety and correct system function. Proper grounding of the electrical outlet can be verified by a certified electrician.

## Safety notices: multilingual translations

The safety notices in this section are provided in English, French, German, Hebrew, Italian, Japanese, and Spanish.

### Safety notice 1

Before the computer is powered on after FRU replacement, make sure all screws, springs, and other small parts are in place and are not left loose inside the computer. Verify this by shaking the computer and listening for rattling sounds. Metallic parts or metal flakes can cause electrical shorts.

Avant de remettre l'ordinateur sous tension après remplacement d'une unité en clientèle, vérifiez que tous les ressorts, vis et autres pièces sont bien en place et bien fixées. Pour ce faire, secouez l'unité et assurez-vous qu'aucun bruit suspect ne se produit. Des pièces métalliques ou des copeaux de métal pourraient causer un court-circuit.

Bevor nach einem FRU-Austausch der Computer wieder angeschlossen wird, muß sichergestellt werden, daß keine Schrauben, Federn oder andere Kleinteile fehlen oder im Gehäuse vergessen wurden. Der Computer muß geschüttelt und auf Klappergeräusche geprüft werden. Metallteile oder-splitter können Kurzschlüsse erzeugen.

לפני הפעלת המחשב לאחר החלפת FRU יש לוודא שכל הברגים, הקפיצים, וחלקים קטנים אחרים נמצאים במקומם ואינם חופשיים לזוז בתוך המחשב. כדי לוודא זאת, יש ללטלט את המחשב ולהקשיב לגילוי קולות שקשוק. חלקי או שבבי מתכת עלולים לגרום לקצרים חשמליים.

Prima di accendere l'elaboratore dopo che é stata effettuata la sostituzione di una FRU, accertarsi che tutte le viti, le molle e tutte le altri parti di piccole dimensioni siano nella corretta posizione e non siano sparse all'interno dell'elaboratore. Verificare ciò scuotendo l'elaboratore e prestando attenzione ad eventuali rumori; eventuali parti o pezzetti metallici possono provocare cortocircuiti pericolosi.

FRUの交換後、コンピュータの電源を入れる前に、ねじ、バネ、その他の小さな部品がすべて正しい位置にあり、またコンピュータの内部で緩んでいないことを確認してください。これを確認するには、コンピュータを振って、カチャカチャと音がしないか確かめます。金属部品や金属破片はショートの原因になることがあります。

Antes de encender el sistema despues de sustituir una FRU, compruebe que todos los tornillos, muelles y demás piezas pequeñas se encuentran en su sitio y no se encuentran sueltas dentro del sistema. Compruébelo agitando el sistema y escuchando los posibles ruidos que provocarían. Las piezas metálicas pueden causar cortocircuitos eléctricos.

**Safety notice 2**

**⚠ DANGER**

Some standby batteries contain a small amount of nickel and cadmium. Do not disassemble a standby battery, recharge it, throw it into fire or water, or short-circuit it. Dispose of the battery as required by local ordinances or regulations. Use only the battery in the appropriate parts listing. Use of an incorrect battery can result in ignition or explosion of the battery.

Certaines batteries de secours contiennent du nickel et du cadmium. Ne les démontez pas, ne les rechargez pas, ne les exposez ni au feu ni à l'eau. Ne les mettez pas en court-circuit. Pour les mettre au rebut, conformez-vous à la réglementation en vigueur. Lorsque vous remplacez la pile de sauvegarde ou celle de l'horloge temps réel, veillez à n'utiliser que les modèles cités dans la liste de pièces détachées adéquate. Une batterie ou une pile inappropriée risque de prendre feu ou d'exploser.

Die Bereitschaftsbatterie, die sich unter dem Diskettenlaufwerk befindet, kann geringe Mengen Nickel und Cadmium enthalten. Sie darf nicht zerlegt, wiederaufgeladen, kurzgeschlossen, oder Feuer oder Wasser ausgesetzt werden. Bei der Entsorgung die örtlichen Bestimmungen für Sondermüll beachten. Beim Ersetzen der Bereitschafts- oder Systembatterie nur Batterien des Typs verwenden, der in der Ersatzteilliste aufgeführt ist. Der Einsatz falscher Batterien kann zu Entzündung oder Explosion führen.

סוללות המתנה מסוימות מכילות כמות קטנה של ניקל וקדמיום. אין לפרק סוללת המתנה, לטעון אותה מחדש, להשליך אותה לנאש או למים או לקצר אותה. יש לשלוק את הסוללה בנדרש על ידי התקנות והחוקים המקומיים. יש להשתמש רק בסוללה המופיעה ברשימת החלקים המתאימה. שימוש בסוללה לא מתאימה עלול לגרום להצתה או התפוצצות של הסוללה.

Alcune batterie di riserva contengono una piccola quantità di nichel e cadmio. Non smontarle, ricaricarle, gettarle nel fuoco o nell'acqua né cortocircuitarle. Smaltirle secondo la normativa in vigore (DPR 915/82, successive disposizioni e disposizioni locali). Quando si sostituisce la batteria dell'RTC (real time clock) o la batteria di supporto, utilizzare soltanto i tipi inseriti nell'appropriato Catalogo parti. L'impiego di una batteria non adatta potrebbe determinare l'incendio o l'esplosione della batteria stessa.

予備バッテリーの中には少量のニッケルとカドミウムが含まれているものがあります。したがって、予備バッテリーの分解、再充電、火または水の中への投棄、またはショートさせることは決して行わないでください。バッテリーを廃棄する場合は地方自治体の条例に従ってください。適切なパーツ・リストにあるバッテリーだけを使用してください。誤ったバッテリーを使用すると、バッテリーが発火したり、爆発したりすることがあります。

Algunas baterías de reserva contienen una pequeña cantidad de níquel y cadmio. No las desmonte, ni recargue, ni las eche al fuego o al agua ni las cortocircuite. Deséchelas tal como dispone la normativa local. Utilice sólo baterías que se encuentren en la lista de piezas. La utilización de una batería no apropiada puede provocar la ignición o explosión de la misma.

**Safety notice 3****⚠ DANGER**

The battery pack contains small amounts of nickel. Do not disassemble it, throw it into fire or water, or short-circuit it. Dispose of the battery pack as required by local ordinances or regulations. Use only the battery in the appropriate parts listing when replacing the battery pack. Use of an incorrect battery can result in ignition or explosion of the battery.

La batterie contient du nickel. Ne la démontez pas, ne l'exposez ni au feu ni à l'eau. Ne la mettez pas en court-circuit. Pour la mettre au rebut, conformez-vous à la réglementation en vigueur. Lorsque vous remplacez la batterie, veillez à n'utiliser que les modèles cités dans la liste de pièces détachées adéquate. En effet, une batterie inappropriée risque de prendre feu ou d'exploser.

Akkus enthalten geringe Mengen von Nickel. Sie dürfen nicht zerlegt, wiederaufgeladen, kurzgeschlossen, oder Feuer oder Wasser ausgesetzt werden. Bei der Entsorgung die örtlichen Bestimmungen für Sondermüll beachten. Beim Ersetzen der Batterie nur Batterien des Typs verwenden, der in der Ersatzteilliste aufgeführt ist. Der Einsatz falscher Batterien kann zu Entzündung oder Explosion führen.

מארו הסוללה מכיל כמויות קטנות של ניקל וקדמיום. אין לפרק את מארו הסוללה, להשליך אותו לאש או למים או לקצר אותו. יש לשלוק את מארו הסוללה כנדרש על ידי התקנות והחוקים המקומיים. יש להשתמש רק בסוללה המופיעה ברשימת החלקים המתאימה בזמן החלפת מארו הסוללה. שימוש בסוללה לא מתאימה עלול לגרום להצתה או התפוצצות של הסוללה.

La batteria contiene piccole quantità di nichel. Non smontarla, gettarla nel fuoco o nell'acqua né cortocircuitarla. Smaltirla secondo la normativa in vigore (DPR 915/82, successive disposizioni e disposizioni locali). Quando si sostituisce la batteria, utilizzare soltanto i tipi inseriti nell'appropriato Catalogo parti. L'impiego di una batteria non adatta potrebbe determinare l'incendio o l'esplosione della batteria stessa.

バッテリー・パックには少量のニッケルが含まれています。バッテリー・パックを分解したり、火または水の中に投げ込んだり、ショートさせないでください。バッテリー・パックの廃棄にあたっては、地方自治体の条例または規則に従ってください。バッテリー・パックを交換するときは、適切なパーツ・リストにあるバッテリーだけを使用してください。誤ったバッテリーを使用すると、バッテリーが発火したり、爆発したりすることがあります。

Las baterías contienen pequeñas cantidades de níquel. No las desmonte, ni recargue, ni las eche al fuego o al agua ni las cortocircuite. Deséchelas tal como dispone la normativa local. Utilice sólo baterías que se encuentren en la lista de piezas al sustituir la batería. La utilización de una batería no apropiada puede provocar la ignición o explosión de la misma.

**Safety notice 4**

**⚠ DANGER**

The lithium battery can cause a fire, an explosion, or a severe burn. Do not recharge it, remove its polarized connector, disassemble it, heat it above 100°C (212°F), incinerate it, or expose its cell contents to water. Dispose of the battery as required by local ordinances or regulations. Use only the battery in the appropriate parts listing. Use of an incorrect battery can result in ignition or explosion of the battery.

La pile de sauvegarde contient du lithium. Elle présente des risques d'incendie, d'explosion ou de brûlures graves. Ne la rechargez pas, ne retirez pas son connecteur polarisé et ne la démontez pas. Ne l'exposez pas à une température supérieure à 100°C, ne la faites pas brûler et n'en exposez pas le contenu à l'eau. Mettez la pile au rebut conformément à la réglementation en vigueur. Une pile inappropriée risque de prendre feu ou d'exploser.

Die Systematterie ist eine Lithiumatterie. Sie kann sich entzünden, explodieren oder schwere Verbrennungen hervorrufen. Batterien dieses Typs dürfen nicht aufgeladen, zerlegt, über 100 C erhitzt oder verbrannt werden. Auch darf ihr Inhalt nicht mit Wasser in Verbindung gebracht oder der zur richtigen Polung angebrachte Verbindungsstecker entfernt werden. Bei der Entsorgung die örtlichen Bestimmungen für Sondermüll beachten. Beim Ersetzen der Batterie nur Batterien des Typs verwenden, der in der Ersatzteilliste aufgeführt ist. Der Einsatz falscher Batterien kann zu Entzündung oder Explosion führen.

סוללת הליתיום עלולה לגרום לשריפה, להתפוצצות או לכוויות קשות. אין לטעון אותה מחדש, לטלוק את המחבר המקוטב שלה, לפרק אותה או לחמם אותה לטמפרטורה העולה על 100 מעלות צלזיוס. אין לשרוף את הסוללה ואין לחשוף את תוכן התא למים. יש לטלוק את הסוללה כנדרש בתקנות ובחוקים המקומיים. יש להשתמש רק בסוללה המומינית ברשימת החלקים המתאימים. שימוש בסוללה אחרת עלול לגרום לשכנת שריפה או התפוצצות.

La batteria di supporto e una batteria al litio e puo incendiarsi, esplodere o procurare gravi ustioni. Evitare di ricaricarla, smontarne il connettore polarizzato, smontarla, riscaldarla ad una temperatura superiore ai 100 gradi centigradi, incendiarla o gettarla in acqua. Smaltirla secondo la normativa in vigore (DPR 915/82, successive disposizioni e disposizioni locali). L'impiego di una batteria non adatta potrebbe determinare l'incendio o l'esplosione della batteria stessa.

リチウム・バッテリーは、火災、爆発、または重症のやけどを引き起こすことがあります。バックアップ・バッテリーの充電、その極性コネクタの取り外し、バッテリー本体の分解、100°C (212°F) 以上への加熱、焼却、電池の中身を水に浸すことはしないでください。バッテリーを廃棄する場合は地方自治体の条例に従ってください。適切なパーツ・リストにあるバッテリーだけを使用してください。誤ったバッテリーを使用すると、バッテリーが発火したり、爆発したりすることがあります。

La batería de repuesto es una batería de litio y puede provocar incendios, explosiones o quemaduras graves. No la recargue, ni quite el conector polarizado, ni la desmonte, ni caliente por encima de los 100°C (212°F), ni la incinere ni exponga el contenido de sus celdas al agua. Deséchela tal como dispone la normativa local.

**Safety notice 5**

If the LCD breaks and the fluid from inside the LCD gets into your eyes or on your hands, immediately wash the affected areas with water at least for 15 minutes. Seek medical care if any symptoms caused by the fluid are present after washing.

Si le panneau d'affichage à cristaux liquides se brise et que vous recevez dans les yeux ou sur les mains une partie du fluide, rincez-les abondamment pendant au moins quinze minutes. Consultez un médecin si des symptômes persistent après le lavage.

Die Leuchtstoffröhre im LCD-Bildschirm enthält Quecksilber. Bei der Entsorgung die örtlichen Bestimmungen für Sondermüll beachten. Der LCD-Bildschirm besteht aus Glas und kann zerbrechen, wenn er unsachgemäß behandelt wird oder der Computer auf den Boden fällt. Wenn der Bildschirm beschädigt ist und die darin befindliche Flüssigkeit in Kontakt mit Haut und Augen gerät, sollten die betroffenen Stellen mindestens 15 Minuten mit Wasser abgespült und bei Beschwerden anschließend ein Arzt aufgesucht werden.

אם מסך הנביש הנוזלי (LCD) נשבר והנוזל מתוך המסך בא במגע עם עיניים או ידיים, שטפו את האזורים הנוגעים מיד במים במשך 15 דקות לפחות. פנו לקבלת עזרה רפואית אם תסמינים הנובעים מהמגע עם הנוזל נמשכים לאחר השטיפה.

Nel caso che caso l'LCD si dovesse rompere ed il liquido in esso contenuto entrasse in contatto con gli occhi o le mani, lavare immediatamente le parti interessate con acqua corrente per almeno 15 minuti; poi consultare un medico se i sintomi dovessero permanere.

LCD が破損し、LCD の中の液体が目に入ったり、手に触れたりした場合は、液体が触れた部分を少なくとも 15 分間洗い流してください。洗い流した後に、液体によって何らかの症状が現れた場合は、医師の治療を受けてください。

Si la LCD se rompe y el fluido de su interior entra en contacto con sus ojos o sus manos, lave inmediatamente las áreas afectadas con agua durante 15 minutos como mínimo. Obtenga atención medica si se presenta algún sintoma del fluido despues de lavarse.

**Safety notice 6**

**⚠ DANGER**

To avoid shock, do not remove the plastic cover that protects the lower part of the inverter card.

Afin d'éviter tout risque de choc électrique, ne retirez pas le cache en plastique protégeant la partie inférieure de la carte d'alimentation.

Aus Sicherheitsgründen die Kunststoffabdeckung, die den unteren Teil der Spannungswandlerplatine umgibt, nicht entfernen.

כדי למנוע התחשמלות, אין להסיר את מכסה הפלסטיק המגן על חלקו התחתון של הכרטיס התחנות.

Per evitare scosse elettriche, non rimuovere la copertura in plastica che avvolge la parte inferiore della scheda invertitore.

感電を防ぐため、インバーター・カードの下部を保護しているプラスチック・カバーを外さないでください。

Para evitar descargas, no quite la cubierta de plástico que rodea la parte baja de la tarjeta invertida.

**Safety notice 7**

**⚠ DANGER**

Though the main batteries have low voltage, a shorted or grounded battery can produce enough current to burn personnel or combustible materials.

Bien que le voltage des batteries principales soit peu élevé, le court-circuit ou la mise à la masse d'une batterie peut produire suffisamment de courant pour brûler des matériaux combustibles ou causer des brûlures corporelles graves.

Obwohl Hauptbatterien eine niedrige Spannung haben, können sie doch bei Kurzschluß oder Erdung genug Strom abgeben, um brennbare Materialien zu entzünden oder Verletzungen bei Personen hervorzurufen.

אף שהסוללות הראשיות הן בעלות מתח נמוך, סוללה מקוצרת או מוארזת עלולה להפיק זרם מספיק לגרימת כוויות או להצתת חומרים דליקים.

Sebbene le batterie di alimentazione siano a basso voltaggio, una batteria in corto circuito o a massa può fornire corrente sufficiente da bruciare materiali combustibili o provocare ustioni ai tecnici di manutenzione.

メイン・バッテリーの電圧は低くても、ショートしたり、接地したバッテリーが、作業者にやけどを負わせたり、可燃物を燃やすだけの電流を発生させる場合があります。

Aunque las baterías principales tienen un voltaje bajo, una batería cortocircuitada o con contacto a tierra puede producir la corriente suficiente como para quemar material combustible o provocar quemaduras en el personal.



**Safety notice 8****⚠ DANGER**

Before removing any FRU, turn off the computer, unplug all power cords from electrical outlets, remove the battery pack, and then disconnect any interconnecting cables.

Avant de retirer une unité remplaçable en clientèle, mettez le système hors tension, débranchez tous les cordons d'alimentation des socles de prise de courant, retirez la batterie et déconnectez tous les cordons d'interface.

Die Stromzufuhr muß abgeschaltet, alle Stromkabel aus der Steckdose gezogen, der Akku entfernt und alle Verbindungskabel abgenommen sein, bevor eine FRU entfernt wird.

לפני סילוק FRU כלשהו, יש לכבות את המחשב, לנתק את כל כבלי החשמל משקעי החשמל, להוציא את מטריז הסוללה, ואז לנתק כבלי חיבור אחרים אם יש כאלה.

Prima di rimuovere qualsiasi FRU, spegnere il sistema, scollegare dalle prese elettriche tutti i cavi di alimentazione, rimuovere la batteria e poi scollegare i cavi di interconnessione.

**FRU** を取り外す前に、**ThinkPad** の電源を切って、すべての電源コードをコンセントから外してください。次に、バッテリー・パックを外し、相互接続ケーブルを外してください。

Antes de quitar una FRU, apague el sistema, desenchufe todos los cables de las tomas de corriente eléctrica, quite la batería y, a continuación, desconecte cualquier cable de conexión entre dispositivos.

## Laser compliance statement

Some models of Lenovo IdeaPad computer are equipped from the factory with an optical storage device such as a CD-ROM drive or a DVD-ROM drive. Such devices are also sold separately as options. If one of these drives is installed, it is certified in the U.S. to conform to the requirements of the Department of Health and Human Services 21 Code of Federal Regulations (DHHS 21 CFR) Subchapter J for Class 1 laser products. Elsewhere, the drive is certified to conform to the requirements of the International Electrotechnical Commission (IEC) 825 and CENELEC EN 60 825 for Class 1 laser products.

If a CD-ROM drive, a DVD-ROM drive, or another laser device is installed, note the following:

### CAUTION

Use of controls or adjustments or performance of procedures other than those specified herein might result in hazardous radiation exposure.

O uso de controles, ajustes ou desempenho de procedimentos diferentes daqueles aqui especificados pode resultar em perigosa exposição à radiação.

凡未在这里指明的任何控制用法、调整、行为，都会导致严重后果。

Pour éviter tout risque d'exposition au rayon laser, respectez les consignes de réglage et d'utilisation des commandes, ainsi que les procédures décrites.

Werden Steuer- und Einstellelemente anders als hier festgesetzt verwendet, kann gefährliche Laserstrahlung auftreten.

Az itt előírt eljárásoktól, beállítástól és vezérlésektől eltérni a lézersugárzás veszélye miatt kockázatos!

L'utilizzo di controlli, regolazioni o l'esecuzione di procedure diverse da quelle specificate possono provocare l'esposizione a.

Использование элементов настройки и выполнение процедур иных, чем указано здесь, может привести к опасному радиационному облучению.

Použitie kontrol, úprav alebo iných vykonaní od iných výrobcov, ako je v tomto špecifikované, mohlo by mať za následok nebezpečenstvo vystavenia sa vyžiarovaniu.

本書で指定された内容以外の、お客様による整備、調整、または手順を行った場合、レーザー光の放射の危険があります。

El uso de controles o ajustes o la ejecución de procedimientos distintos de los aquí especificados puede provocar la exposición a radiaciones peligrosas.

Opening the CD-ROM drive, the DVD-ROM drive, or any other optical storage device could result in exposure to hazardous laser radiation. There are no serviceable parts inside those drives. **Do not open.**

A CD-ROM drive, a DVD-ROM drive, or any other storage device installed may contain an embedded Class 3A or Class 3B laser diode. Note the following:

**⚠ DANGER**

Emits visible and invisible laser radiation when open. Do not stare into the beam, do not view directly with optical instruments, and avoid direct exposure to the beam.

Radiação por raio laser ao abrir. Não olhe fixo no feixe de luz, não olhe diretamente por meio de instrumentos óticos e evite exposição direta com o feixe de luz.

开启时会有激光发射时，请勿盯视激光光束，请勿直接查看视觉仪器，并且避免直接接触在激光光束之中。

Rayonnement laser si carter ouvert. Évitez de fixer le faisceau, de le regarder directement avec des instruments optiques, ou de vous exposer au rayon.

Laserstrahlung bei geöffnetem Gerät. Nicht direkt oder über optische Instrumente in den Laserstrahl sehen und den Strahlungsbereich meiden.

Kinyitáskor lézersugár ! Ne nézzen bele se szabad szemmel, se optikai eszközökkel. Kerülje a sugárnyalábbal való érintkezést!

Aprendo l'unità vengono emesse radiazioni laser. Non fissare il fascio, non guardarlo direttamente con strumenti ottici e evitare l'esposizione diretta al fascio.

Открывая, берегитесь лазерного излучения. Не смотрите на луч, не разглядывайте его с помощью оптических инструментов, а также избегайте прямого воздействия лазерного луча.

Keď je laserová jednotka otvorená. Vyhňte sa priamemu pohľadu a nehládte priamo s optickými nástrojmi do lúča a vyhňte sa priamemu vystaveniu lúčov.

開けるとレーザー光が放射されます。光線を見つめたり、光学機械を使って直接見たりしないでください。

Radiación láser al abrir. No mire fijamente ni examine con instrumental óptico el haz de luz. Evite la exposición directa al haz.

---

## Important service information

---

This chapter presents the following important service information:

- “Strategy for replacing FRUs” on page 16
  - “Important notice for replacing a system board” on page 17
- “Important information about replacing RoHS compliant FRUs” on page 18

### **Important:**

BIOS and device driver fixes are customer-installable. The BIOS and device drivers are posted on the customer support site:  
<http://support.lenovo.com>.

---

## Strategy for replacing FRUs

### **Before replacing parts:**

Make sure that all software fixes, drivers, and BIOS downloads are installed before replacing any FRUs listed in this manual.

After a system board is replaced, ensure that the latest BIOS is loaded to the system board before completing the service action.

To download software fixes, drivers, and BIOS, follow the steps below:

1. Go to <http://support.lenovo.com>.
2. Enter a serial number or select a product or use Lenovo smart downloading.
3. Select the BIOS/Driver/Applications and download.
4. Follow the directions on the screen and install the necessary software.

Use the following strategy to prevent unnecessary expense for replacing and servicing FRUs:

- If you are instructed to replace an FRU, but the replacement does not solve the problem, reinstall the original FRU before you continue.
- Some computers have both a processor board and a system board. If you are instructed to replace either of them, and replacing one of them does not solve the problem, reinstall that board, and then replace the other one.
- If an adapter or a device consists of more than one FRU, any of the FRUs may be the cause of the error. Before replacing the adapter or device, remove the FRUs one by one to see if the symptoms change. Replace only the FRU that changed the symptoms.

**Attention:** The setup configuration on the computer you are servicing may have been customized. Running Automatic Configuration may alter the settings. Note the current configuration settings (using the View Configuration option); then, when service has been completed, verify that those settings remain in effect.

### **Important notice for replacing a system board**

Some components mounted on a system board are very sensitive. Improper handling can cause damage to those components, and may cause a system malfunction.

**Attention:** When handling a system board:

- Do not drop the system board or apply any excessive force to it.
- Avoid rough handling of any kind.
- Avoid bending the system board and hard pushing to prevent cracking at each BGA (Ball Grid Array) chipset.

**Important information about replacing RoHS compliant FRUs**

RoHS, The Restriction of Hazardous Substances in Electrical and Electronic Equipment Directive (2002/95/EC) is a European Union legal requirement affecting the global electronics industry. RoHS requirements must be implemented on Lenovo products placed on the market after June 2006. Products on the market before June 2006 are not required to have RoHS compliant parts. If the original FRU parts are non-compliant, replacement parts can also be non-compliant. In all cases if the original FRU parts are RoHS compliant, the replacement part must also be RoHS compliant.

**Note:** RoHS and non-RoHS FRU part numbers with the same fit and function are identified with unique FRU part numbers.

Lenovo plans to transit to RoHS compliance well before the implementation date and expects its suppliers to be ready to support Lenovo's requirements and schedule in the EU. Products sold in 2005 and 2006 will contain some RoHS compliant FRUs. The following statement pertains to these products and any product Lenovo produces containing RoHS compliant FRUs.

RoHS compliant FRUs have unique FRU part numbers. Before or after the RoHS implementation date, failed RoHS compliant parts must always be replaced with RoHS compliant ones, so only the FRUs identified as compliant in the system HMM or direct substitutions for those FRUs may be used.

Products marketed before June 2006		Products marketed after June 2006	
Current or original part	Replacement FRU	Current or original part	Replacement FRU
Non-RoHS	Can be Non-RoHS	Must be RoHS	Must be RoHS
Non-RoHS	Can be RoHS		
Non-RoHS	Can sub to RoHS		
RoHS	Must be RoHS		

**Note:** A direct substitution is a part with a different FRU part number that is automatically shipped by the distribution center at the time of the order.

---

## General checkout

---

This chapter presents the following information:

- “What to do first” on page 20
- “Power system checkout” on page 21

Before you go to the checkout, make sure to read the following important notes:

**Important notes:**

- **Only certified trained personnel can service the computer.**
- **Before replacing any FRU, read the entire page on removing and replacing FRUs.**
- **Carefully remove screws for reuse when replacing FRUs.**
- **Be extremely careful during such write operations as copying, saving, or formatting.** Drives in the computer that you are servicing sequence might have been altered. If you select an incorrect drive, data or programs might be overwritten.
- **Replace an FRU only with another FRU of the correct model.** When you replace an FRU, make sure that the machine model and the FRU part number are correct by referring to the FRU parts list.
- **An FRU should not be replaced just because of a single, unreproducible failure.** Single failures can occur for a variety of reasons that have nothing to do with a hardware defect, such as cosmic radiation, electrostatic discharge, or software errors. Consider replacing an FRU only when a problem recurs. If you suspect that an FRU is defective, clear the error logs and run the test again. If the error does not recur, do not replace the FRU.
- **Be careful not to replace a nondefective FRU.**

## What to do first

When you do return an FRU, you must include the following information in the parts exchange form or parts return form that you attach to it:

1. Name and phone number of servicer
2. Date of service
3. Date on which the machine failed
4. Date of purchase
5. Procedure index and page number in which the failing FRU was detected
6. Failing FRU name and part number
7. Machine type, model number, and serial number
8. Customer's name and address

**Note for warranty:** During the warranty period, the customer may be responsible for repair costs if the computer damage was caused by misuse, accident, modification, unsuitable physical or operating environment, or improper maintenance by the customer.

The following is a list of some common items that are not covered under warranty and some symptoms that might indicate that the system was subjected to stress beyond normal use.

Before checking problems with the computer, determine whether the damage is covered under the warranty by referring to the following list:

### **The following are not covered under warranty:**

- LCD panel cracked from the application of excessive force or from being dropped
- Scratched (cosmetic) parts
- Distortion, deformation, or discoloration of the cosmetic parts
- Plastic parts, latches, pins, or connectors that have been cracked or broken by excessive force
- Damage caused by liquid spilled into the system
- Damage caused by the improper insertion of a PC Card or the installation of an incompatible card
- Improper disc insertion or use of an optical drive
- Diskette drive damage caused by pressure on the diskette drive cover, foreign material in the drive, or the insertion of a diskette with multiple labels
- Damaged or bent diskette eject button
- Fuses blown by attachment of a nonsupported device
- Forgotten computer password (making the computer unusable)
- Sticky keys caused by spilling a liquid onto the keyboard
- Use of an incorrect AC adapter on laptop products

### **The following symptoms might indicate damage caused by nonwarranted activities:**

- Missing parts might be a symptom of unauthorized service or modification.
- If the spindle of a hard disk drive becomes noisy, it may have been subjected to excessive force, or dropped.



## Power system checkout

To verify a symptom, follow the steps below:

1. Turn off the computer.
2. Connect the AC adapter.
3. Make sure that power is supplied when you turn on the computer.
4. Turn off the computer.
5. Disconnect the AC adapter.
6. Make sure that the battery pack supplies power when you turn on the computer.

If you suspect a power problem, see the appropriate one of the following power supply checkouts:

- “Checking the AC adapter” on page 21
- “Checking operational charging” on page 21

### Checking the AC adapter

You are here because the computer fails only when the AC adapter is used.

- If the power-on indicator does not turn on, check the power cord of the AC adapter for correct continuity and installation.
- If the computer does not charge during operation, go to “Checking operational charging”.

To check the AC adapter, follow the steps below:

1. Unplug the AC adapter cable from the computer.
2. Measure the output voltage at the plug of the AC adapter cable. See the following figure:



Pin	Voltage (V DC)
1	+20
2	0

**Note:** Output voltage for the AC adapter pin No. 2 may differ from the one you are servicing.

3. If the voltage is not correct, replace the AC adapter.
4. If the voltage is acceptable, do the following:
  - Replace the system board.
  - If the problem continues, go to “Lenovo IdeaPad Yoga 11S” on page 26.

**Note:** Noise from the AC adapter does not always indicate a defect.

### Checking operational charging

To check whether the battery charges properly during operation, use a discharged battery pack or a battery pack that has less than 50% of the total power remaining when installed in the computer.

Perform operational charging. If the battery status indicator or icon does not light on, remove the battery pack and let it return to room temperature. Reinstall the battery pack. If the charge indicator or icon is still off, replace the battery pack.

If the charge indicator still does not light on, replace the system board. Then reinstall the battery pack.

---

## Related service information

---

This chapter presents the following information:

- “Restoring the factory contents by using OneKey Recovery” on page 23
- “Passwords” on page 24
- “Power management” on page 25

---

## Restoring the factory contents by using OneKey Recovery

---

### Restore of factory default

The Lenovo IdeaPad Yoga 11S computers come with pre-installed OneKey Recovery System. In order to save application files and the initial backed up files of the system, the hard disk in a Lenovo computer includes a hidden partition when it is shipped. If you need to restore the system to the point of your first boot up, just enter Lenovo OneKey Recovery System and run **System Recovery**. For details of OneKey Recovery System, see *the User Guide for Lenovo OneKey Recovery system*.

**Note:** This will delete all the new data on the system partition (C drive), which is not recoverable. Make sure to back up your critical data before you perform this action.

When you use the recovery discs to boot your computer, the system will enter the user interface for system recovery automatically. Please follow the prompt to insert the backup discs to complete the whole recovery process.

**Note:** The recovery process might take up to 2 hours.

## Passwords

As many as two passwords may be needed for any Lenovo IdeaPad computer: the power-on password (POP) and the supervisor password (SVP).

If any of these passwords has been set, a prompt for it appears on the screen whenever the computer is turned on. The computer does not start until the password is entered.

**Exception:** If only an SVP is installed, the password prompt does not appear when the operating system is booted.

### Power-on password

A power-on password (POP) protects the system from being powered on by an unauthorized person. The password must be entered before an operating system can be booted.

### Supervisor password

A supervisor password (SVP) protects the system information stored in the BIOS Setup Utility. The user must enter the SVP in order to get access to the BIOS Setup Utility and change the system configuration.

**Attention:** If the SVP has been forgotten and cannot be made available to the servicer, there is no service procedure to reset the password. The system board must be replaced for a scheduled fee.

## Power management

**Note:** Power management modes are not supported for APM operating system.

To reduce power consumption, the computer has three power management modes: screen blank, sleep (standby), and hibernation.

### Screen blank mode

If the time set on the “Turn off monitor” timer in the operating system expires, the LCD backlight turns off.

To end screen blank mode and resume normal operation, press any key.

### Sleep (standby) mode

When the computer enters sleep (standby) mode, the following events occur in addition to what occurs in screen blank mode:

- The LCD is powered off.
- The hard disk drive is powered off.
- The CPU stops.

To enter sleep (standby) mode, To put the computer to sleep, do one of the following:

- Close the display panel.
- Press the power button.
- Open the Charms and then select **Settings** → **Power** → **Sleep**.

In certain circumstances, the computer goes into sleep (standby) mode automatically:

- If a “suspend time” has been set on the timer, and the user does not do any operation with the keyboard, the hard disk, the parallel connector, or the diskette drive within that time.
- If the battery indicator is amber, indicating that the battery power is low.

To cause the computer to return from sleep (standby) mode and resume the operation, do one of the following:

- Press the Fn key.
- Press the power button.
- Press the Windows button.

Also, in the following event, the computer automatically returns from sleep (standby) mode and resumes the operation:

- The time set on the resume timer elapses.

**Note:** The computer does not accept any input immediately after it enters sleep (standby) mode. Wait a few seconds before taking any action to reenter operation mode.

## Lenovo IdeaPad Yoga 11S

This chapter presents the following product-specific service references and product-specific parts information:

- “Specifications” on page 26
- “Status indicators” on page 28
- “Function key combinations” on page 29
- “FRU replacement notices” on page 30
- “Removing and replacing an FRU” on page 31
- “Locations” on page 58
- “Parts list” on page 60

### Specifications

The following table lists the specifications of the Lenovo IdeaPad Yoga 11S :

*Table 1. Specifications*

Feature	Description
Processor	<ul style="list-style-type: none"><li>• Intel Chief River ULX Platform Pentium, Core i3, Core i5 and Core i7</li></ul>
Core Chipset	<ul style="list-style-type: none"><li>• Intel Chief River ULX Platform</li></ul>
Graphic Chipset	<ul style="list-style-type: none"><li>• Intel Embedded</li></ul>
Display	<ul style="list-style-type: none"><li>• 11.6" HD Glare 350nit 800:1 Flat eDP</li><li>• Multi-touch screen</li></ul>
Standard memory	<ul style="list-style-type: none"><li>• DDR3L up to 1600 (max 8 GB)</li></ul>
CMOS	<ul style="list-style-type: none"><li>• 256 bytes</li></ul>
SSD	<ul style="list-style-type: none"><li>• 64 GB, 128 GB, 256 GB or 512GB</li></ul>
I/O port	<ul style="list-style-type: none"><li>• USB 2.0 × 1, USB 3.0 × 1</li><li>• HDMI × 1</li><li>• 2 in 1 card reader(SD/MMC)</li></ul>
Audio	<ul style="list-style-type: none"><li>• Combo audio jack × 1</li><li>• Speakers × 2</li><li>• Internal digital Microphone × 2</li></ul>
Bluetooth wireless	<ul style="list-style-type: none"><li>• WIFI/BT hybrid, BT4.0</li></ul>
Keyboard	<ul style="list-style-type: none"><li>• 6 Row, ISO Full Size Keyboard</li></ul>

Table 1. Specifications (continued)

Feature	Description
Touch pad	<ul style="list-style-type: none"> <li>• Multi-touch type</li> </ul>
Integrated camera	<ul style="list-style-type: none"> <li>• 1.0 Mega or 720P HD</li> </ul>
Battery	<ul style="list-style-type: none"> <li>• 4 cell 4S1P 42Wh, Li-polymer battery</li> <li>• 8 cell 4S2P 42Wh, Li-ion battery</li> </ul>
AC adapter	<ul style="list-style-type: none"> <li>• 20 V, 45 W</li> </ul>
Pre-installed operating system	<ul style="list-style-type: none"> <li>• Win8</li> </ul>

## Status indicators

The system status indicators below show the computer status:



Table 2. Status indicators



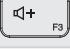


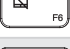




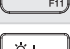
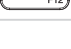
Indicator	Indicator status	Indicator status	Meaning
Power status indicator ⏻	On (white)	---	The computer is on.
	Blinking	---	The computer is in sleep mode.
	Off	---	The computer is off.
Battery status indicator 🔋	On (white)	Charging	The battery's charge is greater than 80%.
	On (white)	Discharging	The battery's charge is greater than 20%.
	On (amber)	Discharging	The battery's charge is less than 20%, but above 5%.
	Blinking (white)	Charging	The battery's charge is less than 80%, but above 20%.
	Blinking slowly (amber)	Charging	The battery's charge is less than 20%, but above 5%.
	Blinking quickly (amber)	Discharging/Charging	The battery's charge is less than 5%.
	Off	Discharging	The computer is off.



## Function key combinations

The following table shows the function of each combination of function key.

Table 3. Function keys

	Mutes/unmutes the sound.
	Decreases the volume level.
	Increases the volume level.
	Closes the currently active window.
	Refreshes the desktop or the currently active window.
	Enables/disables the touchpad.
	Enables/disables Airplane mode.
	Displays all currently active apps.
	Turns on/off the backlight of the LCD screen.
	Toggles the display between the computer and an external device.
	Decreases display brightness.
	Increases display brightness.

## FRU replacement notices

This section presents notices related to removing and replacing parts. Read this section carefully before replacing any FRU.

### Screw notices

Loose screws can cause a reliability problem. In the Lenovo IdeaPad computer, this problem is addressed with special nylon-coated screws that have the following characteristics:

- They maintain tight connections.
- They do not easily come loose, even with shock or vibration.
- They are harder to tighten.
- Each one should be used only once.

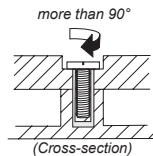
Do the following when you service this machine:

- Keep the screw kit in your tool bag.
- Carefully remove screws for reuse when replacing FRUs.
- Use a torque screwdriver if you have one.

Tighten screws as follows:

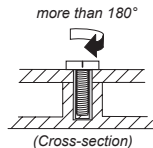
- **Plastic to plastic**

Turn an additional 90° after the screw head touches the surface of the plastic part:



- **Logic card to plastic**

Turn an additional 180° after the screw head touches the surface of the logic card:



- **Torque driver**

If you have a torque screwdriver, refer to the “Torque” column for each step.

- Make sure that you use the correct screws. If you have a torque screwdriver, tighten all screws firmly to the torque shown in the table. **Carefully remove screws for reuse when replacing FRUs. Make sure that all screws are tightened firmly.**
- Ensure torque screwdrivers are calibrated correctly following country specifications.

## Removing and replacing an FRU

This section presents exploded figures with the instructions to indicate how to remove and replace the FRU. Make sure to observe the following general rules:

1. Do not attempt to service any computer unless you have been trained and certified. An untrained person runs the risk of damaging parts.
2. Before replacing any FRU, review “FRU replacement notices” on page 30.
3. Begin by removing any FRUs that have to be removed before the failing FRU. Any of such FRUs are listed at the top of the page. Remove them in the order in which they are listed.
4. Follow the correct sequence in the steps to remove the FRU, as given in the figures by the numbers in square callouts.
5. When turning a screw to replace an FRU, turn it in the direction as given by the arrow in the figure.
6. When removing the FRU, move it in the direction as given by the arrow in the figure.
7. To put the new FRU in place, reverse the removal procedures and follow any of the notes that pertain to replacement. For information about connecting and arranging internal cables, see “Locations” on page 58.
8. When replacing an FRU, use the correct screw as shown in the procedures.

 **DANGER**

Before removing any FRU, turn off the computer, unplug all power cords from electrical outlets, and then disconnect any of the interconnecting cables.

**Attention:** After replacing an FRU, do not turn on the computer until you have made sure that all screws, springs, and other small parts are in place and none are loose inside the computer. Verify this by shaking the computer gently and listening for rattling sounds. Metallic parts or metal flakes can cause electrical short circuits.

**Attention:** The system board is sensitive to, and can be damaged by, electrostatic discharge. Before touching it, establish personal grounding by touching a ground point with one hand or using an electrostatic discharge (ESD) strap (P/N 6405959) to remove potential shock reasons.

## 1010 Dummy card

*Figure 1. Removal step of dummy card*

Remove the dummy card in the direction shown by arrows **1** **2**.



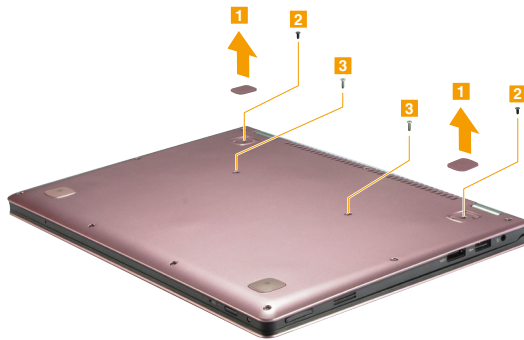
## 1020 Keyboard

For access, remove this FRU:

- “1010 Dummy card” on page 32

Figure 2. Removal steps of keyboard

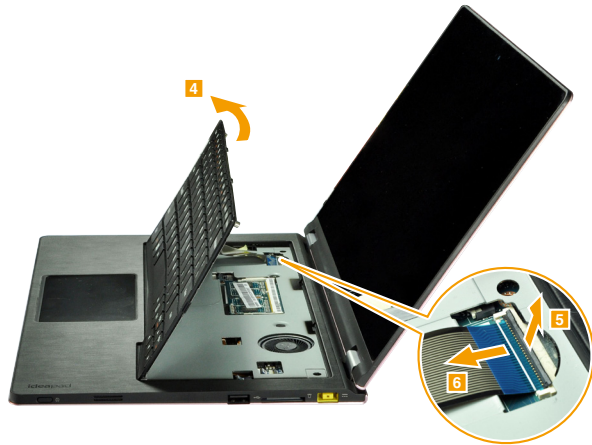
Remove the two rubber feet in the direction shown by arrows **1**, and then remove the two screws **2** and two screws **3**.



Step	Screw (quantity)	Color	Torque
<b>2</b>	M2.0 × 4L 3.5D 0.5T, D_cover to MB to KB (2)	Black	1.5-2.0 kg-cm
<b>3</b>	M2.0 × 6L 3.5D 0.8T, D_cover to Top_cover (2)	Sliver	1.5-2.0 kg-cm

Figure 2. Removal steps of keyboard (continued)

Lift the keyboard a little **4** and detach the connector in the direction shown by arrows **5** **6**, then remove the keyboard.



**When installing:** Make sure that the FPC connector is attached firmly.

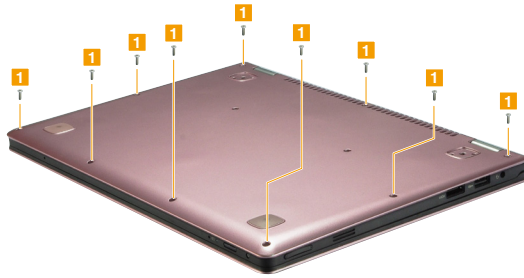
## 1030 Keyboard bezel

For access, remove these FRU:

- “1010 Dummy card” on page 32
- “1020 Keyboard” on page 33

Figure 3. Removal steps of keyboard bezel

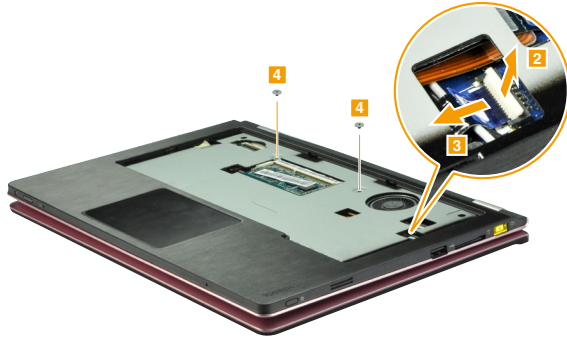
Remove the nine screws ■.



Step	Screw (quantity)	Color	Torque
■	M2.0 × 6L 3.5D 0.8T, D_cover to Top_cover (9)	Sliver	1.5-2.0 kg-cm

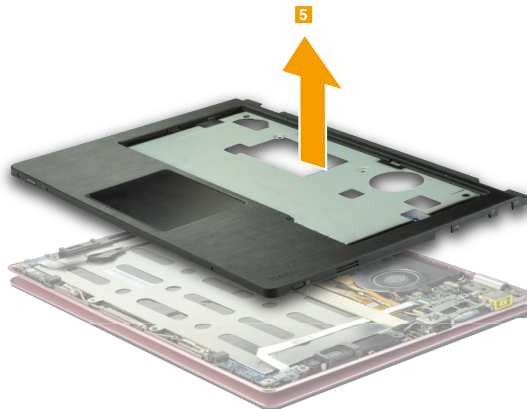
Figure 3. Removal steps of keyboard bezel (continued)

Detach the touch pad connector in the direction shown by arrows **2** **3**.  
Remove the two screws **4**.



Step	Screw (quantity)	Color	Torque
<b>4</b>	M2.0 × 2.5L 4.5D 0.5T, KB_brk to MB to D_cover (2)	Black	1.5-2.0 kg-cm

Remove the base cover in the direction shown by arrow **5**.





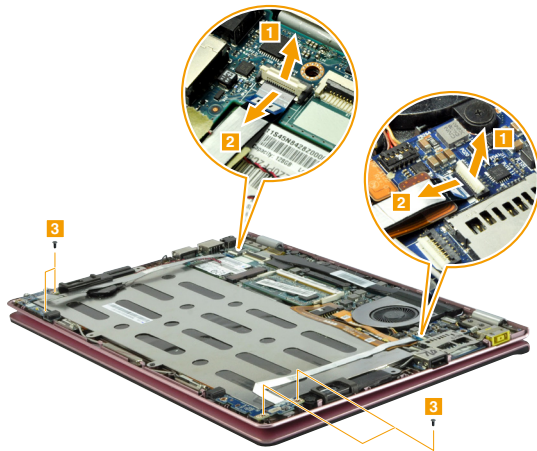
## 1040 Power board and rotation button board

For access, remove these FRUs in order:

- “1010 Dummy card” on page 32
- “1020 Keyboard” on page 33
- “1030 Keyboard bezel” on page 35

Figure 4. Removal steps of power board and rotation button board

Detach the two FPC connectors in the direction shown by arrows **2**.  
Remove the four screws **3**.

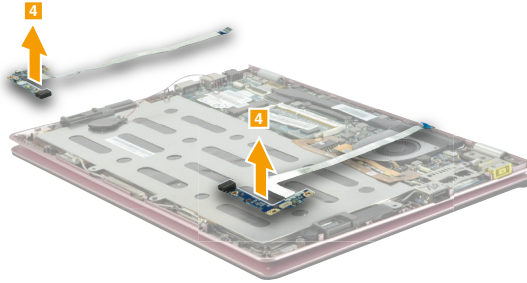


Step	Screw (quantity)	Color	Torque
<b>3</b>	M2.0 × 2.5L 4.5D 0.5T, Power_B to C_ cover&Rotation_B to C_ cover (4)	black	1.5-2.0 kg-cm

**When installing:** Make sure the FPC connectors is attached firmly.

Figure 4. Removal steps of power board and rotation button board (continued)

Remove the power board and the rotation button board in the direction shown by arrows **4**.



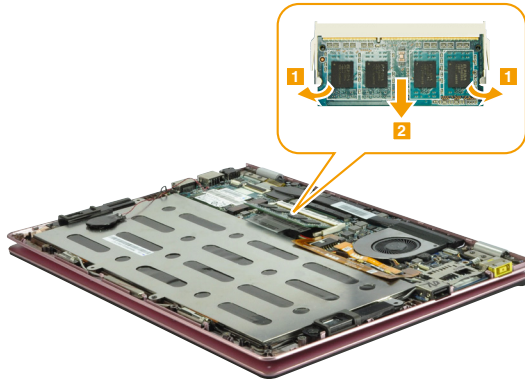
## 1050 DIMM

For access, remove these FRUs in order:

- “1010 Dummy card” on page 32
- “1020 Keyboard” on page 33
- “1030 Keyboard bezel” on page 35
- “1040 Power board and rotation button board” on page 37

*Figure 5. Removal steps of DIMM*

Release the two latches on both edges of the socket at the same time in the direction shown by arrows **1**, and then unplug the DIMM in the direction shown by arrow **2**.



**When installing:** Insert the notched end of the DIMM into the socket. Push the DIMM firmly, and pivot it until it snaps into the place. Make sure that it is firmly fixed in the slot and difficult to be moved.

## 1060 Battery pack

For access, remove these FRUs in order:

- “1010 Dummy card” on page 32
- “1020 Keyboard” on page 33
- “1030 Keyboard bezel” on page 35
- “1040 Power board and rotation button board” on page 37
- “1050 DIMM” on page 39

### **⚠ DANGER**

Only use the battery specified in the parts list for your computer. Any other battery could ignite or explode.

*Figure 6. Removal steps of battery pack*

Detach the RTC battery connector in the directions shown by arrow **■**.

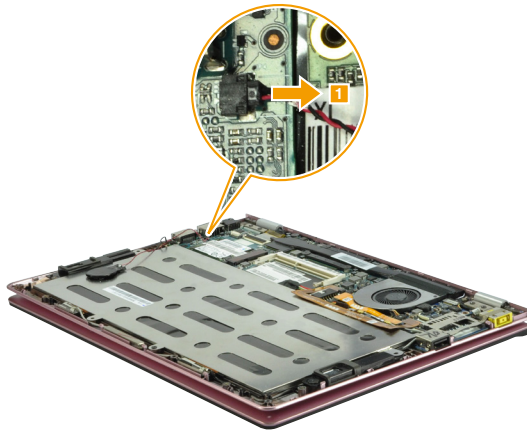
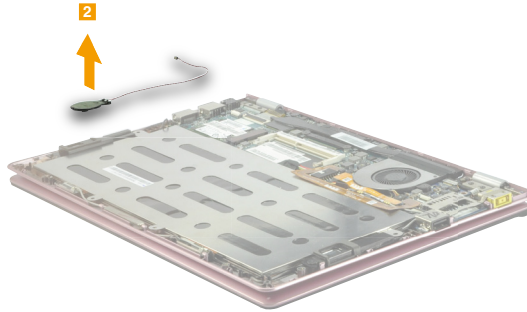


Figure 6. Removal steps of battery pack (continued)

Remove the RTC battery **2**.



Remove the IO board FPC **3**.

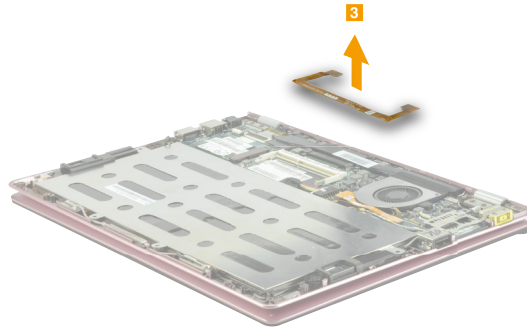
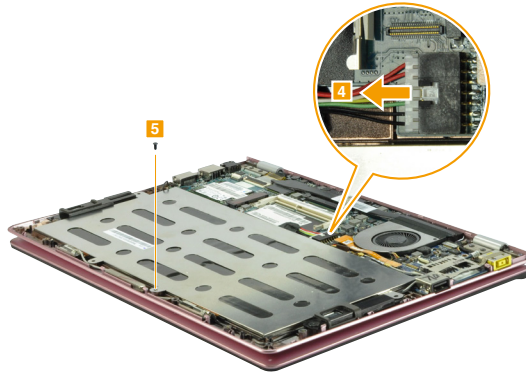


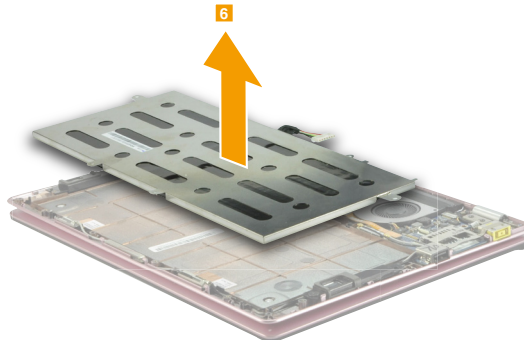
Figure 6. Removal steps of battery pack (continued)

Detach the battery pack connector in the direction shown by arrow **4**, remove the screw **5**.



Step	Screw (quantity)	Color	Torque
5	M2.0 × 4L 3.5D 0.5T, Battery to D_cover (1)	black	1.5-2.0 kg-cm

Remove the battery pack in the direction shown by arrow **6**.



**When installing:** Make sure the battery pack connector is attached firmly.

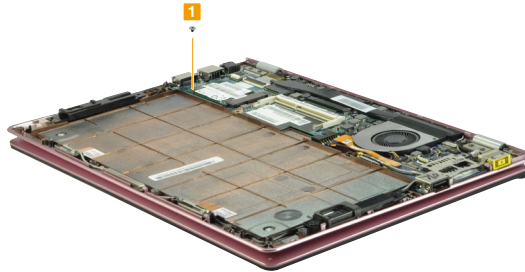
## 1070 SSD

For access, remove these FRUs in order:

- “1010 Dummy card” on page 32
- “1020 Keyboard” on page 33
- “1030 Keyboard bezel” on page 35
- “1040 Power board and rotation button board” on page 37
- “1050 DIMM” on page 39
- “1060 Battery pack” on page 40

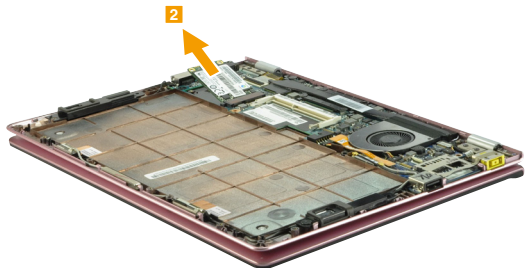
Figure 7. Removal steps of SSD

Remove the screw **■**.



Step	Screw (quantity)	Color	Torque
■	M2.0 × 2.5L 4.5D 0.5T, M-SATA To D cover (1)	Black	1.5-2.0 kg-cm

Remove the SSD in the directions shown by arrow **2**.



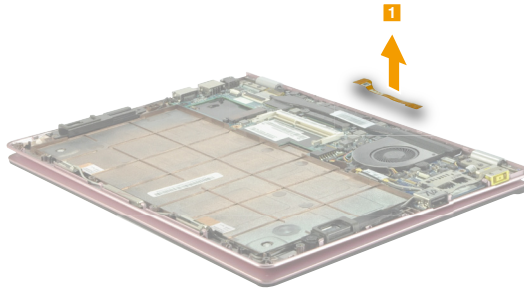
## 1080 PCI Express Mini Card for wireless LAN

For access, remove these FRUs in order:

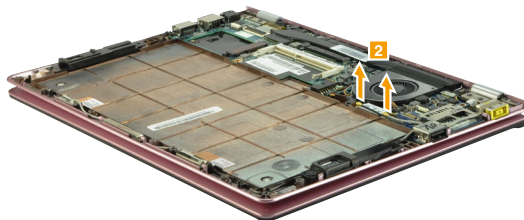
- “1010 Dummy card” on page 32
- “1020 Keyboard” on page 33
- “1030 Keyboard bezel” on page 35
- “1040 Power board and rotation button board” on page 37
- “1050 DIMM” on page 39
- “1060 Battery pack” on page 40
- “1070 SSD” on page 43

*Figure 8. Removal steps of PCI Express Mini Card for wireless LAN*

Remove the Wlan FPC **1**.



Disconnect the two wireless LAN cables (black, grey) **2**.



In step **2**, unplug the jacks by using the removal tool antenna RF connector (P/N: 08K7159), or pick up the connectors with your fingers and gently unplug them in the direction shown by arrows.

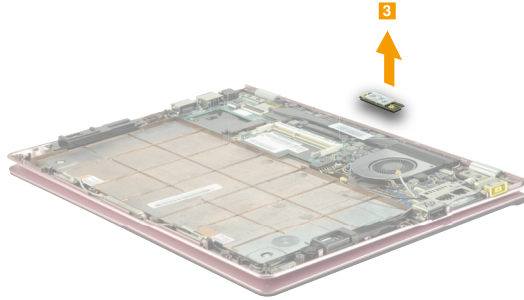
### **When installing:**

- In models with a wireless LAN card that has two antenna connectors, plug the black cable (1st) (MAIN) into the jack labeled **1**, and the grey cable (2nd) (AUX) into jack labeled **2** on the card.



Figure 8. Removal steps of PCI Express Mini Card for wireless LAN (continued)

Remove the card in the direction shown by arrow **3**.



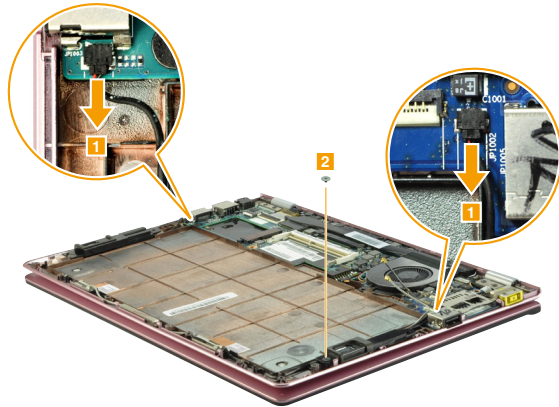
## 1090 Speakers

For access, remove these FRUs in order:

- “1010 Dummy card” on page 32
- “1020 Keyboard” on page 33
- “1030 Keyboard bezel” on page 35
- “1040 Power board and rotation button board” on page 37
- “1050 DIMM” on page 39
- “1060 Battery pack” on page 40
- “1070 SSD” on page 43
- “1080 PCI Express Mini Card for wireless LAN” on page 44

*Figure 9. Removal steps of speakers*

Unplug the two speaker connectors in the direction shown by arrows **1**. Remove the screw **2**.

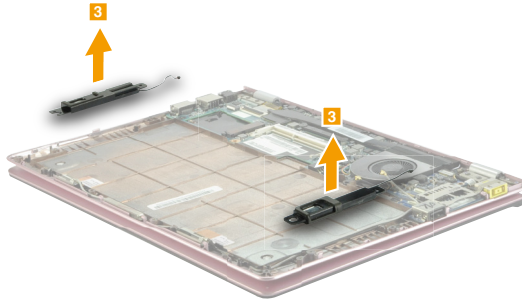


Step	Screw (quantity)	Color	Torque
<b>2</b>	M2.0 × 2.0L 6.5D 0.5T, SPKR to D_cover (1)	Black	1.5-2.0 kg-cm

**When installing:** Make sure that the speaker connectors are attached firmly.

Figure 9. Removal steps of speakers (continued)

Remove the speakers in the direction shown by arrows **3**.



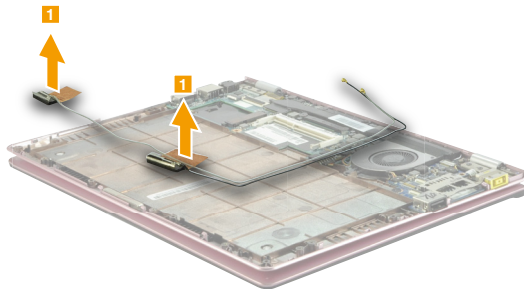
## 1100 Antenna assembly

For access, remove these FRUs in order:

- “1010 Dummy card” on page 32
- “1020 Keyboard” on page 33
- “1030 Keyboard bezel” on page 35
- “1040 Power board and rotation button board” on page 37
- “1050 DIMM” on page 39
- “1060 Battery pack” on page 40
- “1070 SSD” on page 43
- “1080 PCI Express Mini Card for wireless LAN” on page 44
- “1090 Speakers” on page 46

*Figure 10. Removal steps of antenna assembly*

Remove the antennas in the direction shown by arrows **1**.



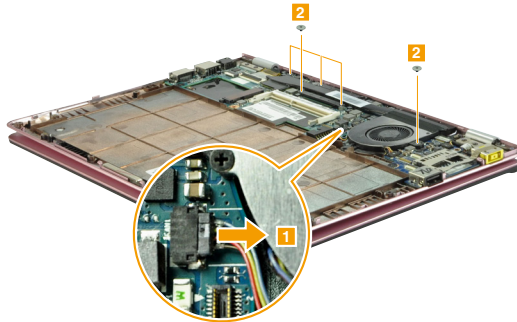
## 1110 Fan and Heat Sink assembly

For access, remove these FRUs in order:

- “1010 Dummy card” on page 32
- “1020 Keyboard” on page 33
- “1030 Keyboard bezel” on page 35
- “1040 Power board and rotation button board” on page 37
- “1050 DIMM” on page 39
- “1060 Battery pack” on page 40
- “1070 SSD” on page 43
- “1080 PCI Express Mini Card for wireless LAN” on page 44
- “1090 Speakers” on page 46
- “1100 Antenna assembly” on page 48

Figure 11. Removal steps of fan and heat sink assembly

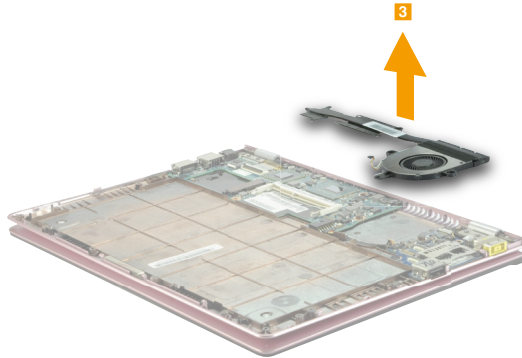
Detach the fan connector in the direction shown by arrow **1** and remove the five screws **2**.



Step	Screw (quantity)	Color	Torque
<b>2</b>	M2.0 × 2.0L 6.5D 0.5T, Fan to IO board to D cover&Thermal to MB&PCH BRK TO MB (5)	Black	1.5-2.0 kg-cm

Figure 11. Removal steps of fan and heat sink assembly (continued)

Remove the fan and heat sink assembly **3**.



## 1120 System board

### **Important notices for handling the system board:**

When handling the system board, bear the following in mind.

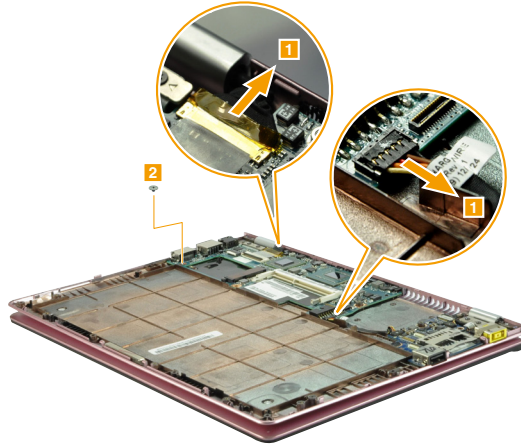
- Be careful not to drop the system board on a bench top that has a hard surface, such as metal, wood, or composite.
- Avoid rough handling of any kind.
- In the whole process, make sure not to drop or stack the system board.
- If you put a system board down, make sure to put it only on a padded surface such as an ESD mat or conductive corrugated material.

For access, remove these FRUs in order:

- “1010 Dummy card” on page 32
- “1020 Keyboard” on page 33
- “1030 Keyboard bezel” on page 35
- “1040 Power board and rotation button board” on page 37
- “1050 DIMM” on page 39
- “1060 Battery pack” on page 40
- “1070 SSD” on page 43
- “1080 PCI Express Mini Card for wireless LAN” on page 44
- “1090 Speakers” on page 46
- “1100 Antenna assembly” on page 48
- “1110 Fan and Heat Sink assembly” on page 49

Figure 12. Removal steps of system board

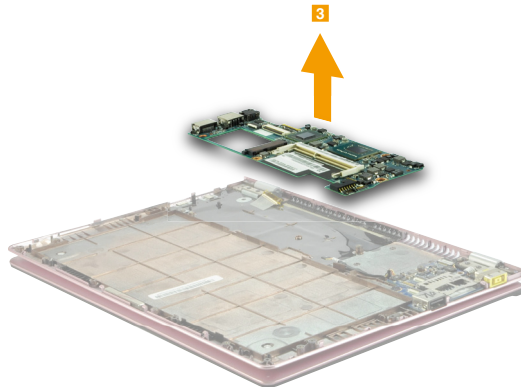
Unplug the LCD connector and IO board connector in the direction shown by arrows **1**. Remove the screw **2**.



**When installing:** Make sure that all the connectors are attached firmly.

Step	Screw (quantity)	Color	Torque
2	M2.0 × 2.0L 6.5D 0.5T, MB to D_cover(1)	Black	1.5-2.0 kg-cm

Remove the system board in the direction shown by arrows **3**.





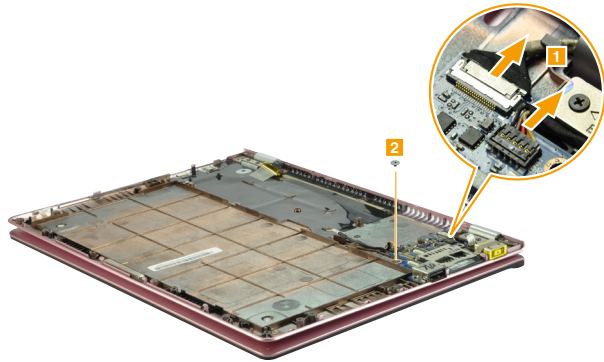
## 1130 IO board and DC-in board

For access, remove these FRUs in order:

- “1010 Dummy card” on page 32
- “1020 Keyboard” on page 33
- “1030 Keyboard bezel” on page 35
- “1040 Power board and rotation button board” on page 37
- “1050 DIMM” on page 39
- “1060 Battery pack” on page 40
- “1070 SSD” on page 43
- “1080 PCI Express Mini Card for wireless LAN” on page 44
- “1090 Speakers” on page 46
- “1100 Antenna assembly” on page 48
- “1110 Fan and Heat Sink assembly” on page 49
- “1120 System board” on page 51

Figure 13. Removal steps of IO board and DC-in board

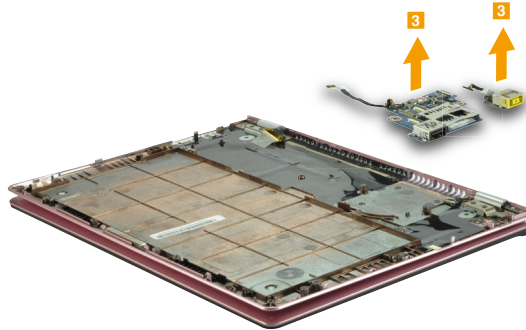
Unplug the camera and DC-in connectors in the direction shown by arrows **1**.  
Remove the screw **2**.



Step	Screw (quantity)	Color	Torque
<b>2</b>	M2.0 × 2.0L 6.5D 0.5T, IO BOARD TO D_COVER (1)	Black	1.5-2.0 kg-cm

Figure 13. Removal steps of IO board and DC-in board (continued)

Remove the IO board and DC-in board in the direction shown by arrows **3**.




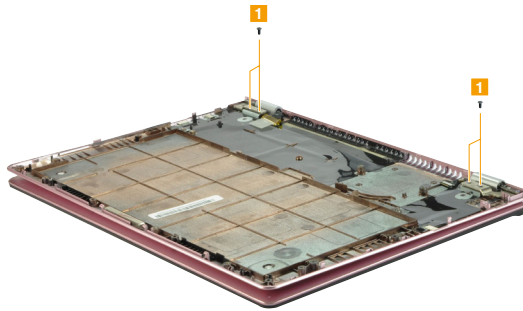
## 1140 LCD unit

For access, remove these FRUs in order:

- “1010 Dummy card” on page 32
- “1020 Keyboard” on page 33
- “1030 Keyboard bezel” on page 35
- “1040 Power board and rotation button board” on page 37
- “1050 DIMM” on page 39
- “1060 Battery pack” on page 40
- “1070 SSD” on page 43
- “1080 PCI Express Mini Card for wireless LAN” on page 44
- “1090 Speakers” on page 46
- “1100 Antenna assembly” on page 48
- “1110 Fan and Heat Sink assembly” on page 49
- “1120 System board” on page 51
- “1130 IO board and DC-in board” on page 53

*Figure 14. Removal steps of LCD unit*

Remove the four screws .




Step	Screw (quantity)	Color	Torque
	M2.0 × 4L 3.5D 0.5T, Hinge to D_cover (4)	Black	1.5-2.0 kg-cm

Figure 14. Removal steps of LCD unit (continued)

Open the base cover in the direction shown by arrow **2**. Remove the base cover from the LCD unit **3**.



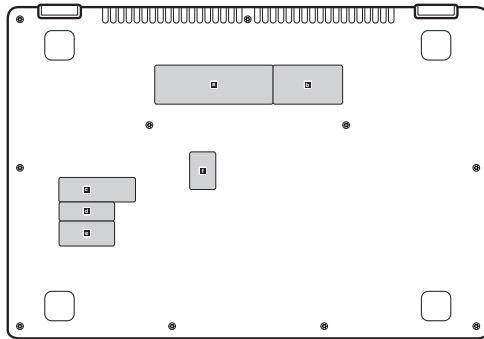
**Note: Applying labels to the base cover**

The new base cover FRU is shipped with a kit containing labels of several kinds. When you replace the base cover, you need to apply the following label:

The following labels need to be peeled off from the old base cover, and need to be put on the new base cover.

- a** Rating label (ww or China)
- b** Rating label print
- c** KCC label
- d** Indonesia D side label
- e** BT WL label for US/CA/TW/Brzail/Indonesia/Isarael
- f** Win8 OS label

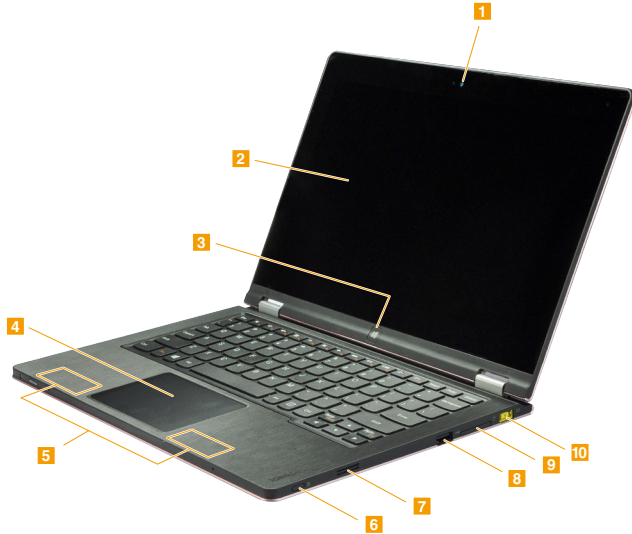
For the location of each label, refer to the following figure:



## Locations

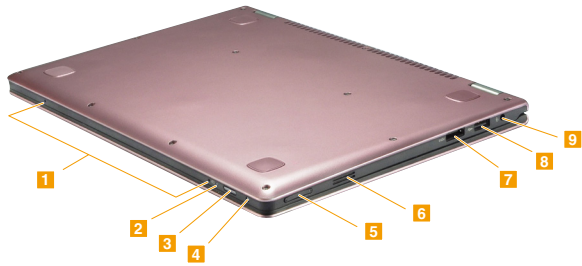
### Front view and right-side view

- Integrated camera (select models only)
- 2 Multi-touch screen
- 3 Windows button
- 4 Touchpad
- 5 Wireless LAN antennas
- 6 Screen rotation lock button
- 7 Speaker
- 8 USB port
- 9 Memory card slot
- 10 AC power adapter jack



## Bottom and Left-side view

- 1 Built-in microphones
- 2 Battery status indicator
- 3 Power button
- 4 Novo button
- 5 Volume button
- 6 Speaker
- 7 HDMI port
- 8 USB port
- 9 Combo audio jack



## Parts list

---

This section presents the following service parts:

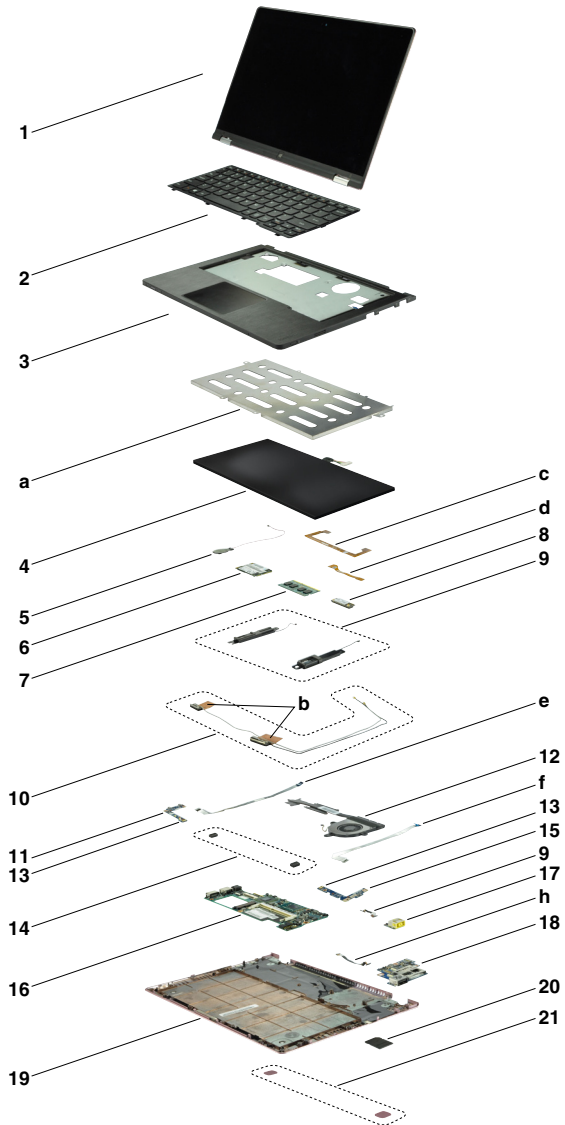
- “Overall” on page 61
- “Keyboard” on page 64
- “Miscellaneous parts” on page 66
- “Screws” on page 67
- “AC adapters” on page 68
- “Power cords” on page 69

### Notes:

- Each FRU is available for all types or models, unless specific types or models are specified.



Overall



**Table 5. Parts list—Overall**

No.	FRU	FRU no.	CRU ID.
a-h	See "Miscellaneous parts" on page 66.		
1	LCD unit		
2	Keyboard(see "Keyboard" on page 64)		
3	VIUU4 Upper Case W/TP	90202804	
4	Venus 2 SMP/ATL L11M4P13 4S1P 42Wh bty	121500157	
5	VIUU4 RTC Battery(MB)	90202810	
6	SSD, Samsung PM830 64GB mSATA SSD	16200109	
6	SSD, Samsung PM841 128GB mSATA SSD(TLC)	16200317	
6	SSD, Toshiba THNSNH128GMCT 128GB mSATA	16200350	
6	SSD, Samsung PM841-256GB mSATA SSD	16200318	
6	SSD, Toshiba THNSNH256GMCT 256GB mSATA	16200351	
6	SSD, Samsung MZMTD512HAGL 512G mSATA	16200355	
7	Memory, Samsung, M471B5773DH0-YK0 2GB DDR3L 1600	11200502	
7	Memory, SK hynix, HMT425S6AFR6A-PB 2GB DDR3L 1600	11201299	
7	Memory, Ramaxel, RMT3170ED58F8W-1600 2GB DDR3L 1600	11201835	
7	Memory, Micron, MT8KTF25664HZ-1G6M1 2GB DDR3L 1600	11200346	
7	Memory, Samsung, M471B5273DH0-YK0 4GB DDR3L 1600	11200503	
7	Memory, SK hynix, HMT451S6AFR8A-PB 4GB DDR3L 1600	11201300	
7	Memory, Ramaxel, RMT3170EB68F9W-1600 4GB DDR3L 1600	11201512	
7	Memory, Sharetronic, SM321NQ08ICF 4GB DDR3L 1600	11201834	
7	Memory, Micron, MT8KTF51264HZ-1G6J1 4GB DDR3L 1600	11201342	
7	Memory, Samsung, M471B1G73BH0-YK0 8GB DDR3L 1600	11200504	
7	Memory, SK hynix, HMT41GS6AFR8A-PB 8GB DDR3L 1600	11201301	
7	Memory, Sharetronic, SM322NW08IAF 8GB DDR3L 1600	11201514	
7	Memory, Micron, MT16KTF1G64HZ-1G6E1 8GB DDR3L 1600	11201304	
8	WLAN&BT, Hybrid, USB, Liteon, RTL8723 BGN USB + USB BT	20200052	
9	VIUU4 Speaker Left	90202818	
9	VIUU4 Speaker Right	90202819	
10	VIUU4 Antenna*2	90202820	

**N**

Table 5. Parts list—Overall (continued)

No.	FRU	FRU no.	CRU ID.	
11	VIUU4 Power Board FFC	90202814	N	
12	VIUU4 Thermal Module	90202816		
13	VIUU4 MIC	90202813		
14	VIUU4 MIC Rubber	90202811		
15	VIUU4 Rotation button Board	90003050		
16	VIUU4 MB UMA 2129	90003054		
16	VIUU4 MB UMA 2129 W8P	90003055		
16	VIUU4 MB UMA 2129 W8S	90003056		
16	VIUU4 MB UMA I3-3229 1.4G	90003057		
16	VIUU4 MB UMA I3-3229 1.4G W8P	90003058		
16	VIUU4 MB UMA I3-3229 1.4G W8S	90003059		
16	VIUU4 MB UMA I5-3339 1.5G	90003060		
16	VIUU4 MB UMA I5-3339 1.5G W8P	90003061		
16	VIUU4 MB UMA I5-3339 1.5G W8S	90003062		
16	VIUU4 MB UMA I7-3689 1.5G	90003063		
16	VIUU4 MB UMA I7-3689 1.5G W8P	90003064		
16	VIUU4 MB UMA I7-3689 1.5G W8S	90003065		
17	VIUU4 DC-IN Board	90202808		
18	VIUU4 I/O Board	90003051		
19	VIUU4 Lower Case Orange	90202821		
19	VIUU4 Lower Case Gray	90202822		
20	VIUU4 SD Dummy Card	90202834		
21	VIUU4 Rubber Foot Orange	90202802		
20	VIUU4 Rubber Foot Gray	90202803		
—	AC power adapter (see "AC adapters" on page 68).			*

## Keyboard

Table 6. Parts list—Keyboard

Language		P/N	CRU ID.
Chicony	English	25210801	N
	U.K. English	25210802	
	Italian	25210803	
	Spanish	25210804	
	Turkish	25210805	
	Thai	25210806	
	Portuguese	25210807	
	Latin	25210808	
	Canadian Bilingual (En+Fr)	25210809	
	Korean	25210810	
	Traditional Chinese	25210811	
	Russian	25210812	
	French	25210813	
	German	25210814	
	Arabic	25210815	
	Brazilian	25210816	
	Japanese	25210817	
	Dutch	25210818	
	Greek	25210819	
	Hebrew	25210820	
	Hungarian	25210821	
	Nordic	25210822	
	Belgian	25210823	
	Icelandic	25210824	
	Slovenian	25210825	
	Swiss	25210826	
	US international	25210827	
	Czech&Slovak	25210828	
Bulgarian	25210829		
Indic	25210830		
Sunrex	English	25210831	
	U.K. English	25210832	
	Italian	25210833	
	Spanish	25210834	
	Turkish	25210835	
	Thai	25210836	
	Portuguese	25210837	
	Latin	25210838	
	Canadian Bilingual (En+Fr)	25210839	
	Korean	25210840	
	Traditional Chinese	25210841	
	Russian	25210842	
	French	25210843	
	German	25210844	
	Arabic	25210845	

Table 6. Parts list—Keyboard (continued)

Language		P/N	CRU ID.
Sunrex (continued)	Brazilian	25210846	N
	Japanese	25210847	
	Dutch	25210848	
	Greek	25210849	
	Hebrew	25210850	
	Hungarian	25210851	
	Nordic	25210852	
	Belgian	25210853	
	Icelandic	25210854	
	Slovenian	25210855	
	Swiss	25210856	
	US international	25210857	
	Czech&Slovak	25210858	
	Bulgarian	25210859	
Indic	25210860		
Darfon	English	25210861	
	U.K. English	25210862	
	Italian	25210863	
	Spanish	25210864	
	Turkish	25210865	
	Thai	25210866	
	Portuguese	25210867	
	Latin	25210868	
	Canadian Bilingual (En+Fr)	25210869	
	Korean	25210870	
	Traditional Chinese	25210871	
	Russian	25210872	
	French	25210873	
	German	25210874	
	Arabic	25210875	
	Brazilian	25210876	
	Japanese	25210877	
	Dutch	25210878	
	Greek	25210879	
	Hebrew	25210880	
	Hungarian	25210881	
	Nordic	25210882	
	Belgian	25210883	
	Icelandic	25210884	
	Slovenian	25210885	
	Swiss	25210886	
	US international	25210887	
	Czech&Slovak	25210888	
Bulgarian	25210889		
Indic	25210890		

**Miscellaneous parts**

*Table 7. Parts list—Miscellaneous parts*

FRU	P/N	CRU ID.
System miscellaneous parts:		N
• (a) VIUU4 Battery AL Foil	90202835	
• (b) VIUU4 WIFI Gasket	90202809	
Cable miscellaneous parts:		
• (c) VIUU4 IO/B FPC	90202805	
• (d) VIUU4 WIFI FPC	90202806	
• (e) VIUU4 Power Board FFC	90202814	
• (f) VIUU4 Rotation button Board FFC	90202815	
• (g) VIUU4 DC-IN Cable	90202807	
• (h) VIUU4 I/O Cable	90202817	
<b>Note:</b> Italicized letters in parentheses are references to the exploded view in “Overall” on page 61 .		

## Screws

Table 8. Parts list—Screws

FRU	P/N	CRU ID.
VIUU4 Screw 2D 2.5LK 4.5D 0.5T ZK NL+	90202836	N
VIUU4 Screw 1.6D 2.5LK3.5D 0.3T ZKNL+	90202837	
VIUU4 Screw 2D 2.5LK 6.5D 0.5T ZK NL+	90202838	
VIUU4 Screw 2D 4.0LK 3.5D 0.5T ZK NL+	90202839	
VIUU4 Screw 2D 4.5LK 3.5D 0.5T NI NL+	90202840	
VIUU4 Screw 1.6D 1.7LK4.5D 0.5T ZKNL+	90202841	
VIUU4 Screw 2D 6.0LK 3.5D NONE NL*	90202843	

## AC adapters

*Table 9. Parts list—Miscellaneous parts*

FRU	P/N	CRU ID.
Adapter, 45W 3pin, Delta ADLX45NDC3X 20V2.25A	36200245	*
Adapter, 45W 3pin, Liteon ADLX45NLC3X 20V2.25A	36200246	
Adapter, 45W 3pin, Chicony ADLX45NCC3A 20V2.25A	36200247	



## Power cords

A Lenovo IdeaPad power cord for a specific country or region is usually available only in that country or region:

Table 10. Parts list—3-pin power cords

Region	P/N	CRU ID.
CCC • LINETEK PC323+RVV300/300+LS15 1m	145000600	*
Argentina • LINETEK LS15+H03VV-F+LP39 1m	145000599	
Denmark • LINETEK LS15+H03VV-F+LP-38 1m	145000598	
Switzerland • LINETEK LS15+H03VV-F+LP-37 1m	145000597	
Brazil • LINETEK LS15 H03VV-F LP26A 1m	145000596	
Israel • LINETEK LS15+H03VV-F+LP-41 1m	145000595	
UL • LINETEK LP-30B + SPT-2 + LS15 1m	145000594	
UK • LINETEK LP-61L+ H03VV-F+ LS15 1m	145000593	
Indian • LINETEK PE-361+ H05VV-F+ LS15 1m	145000592	
Italy • LINETEK LS15+H03VV-F+PE-336 1m	145000591	
Korea • LINETEK LS15+H05VV-F+LP-E04A 1m	145000590	
Australia • LINETEK LS15+H03VV-F+LP-23A 1m	145000589	
Taiwan • LINETEK LS15+VCTF+LP-53 1m	145000588	
Japan • LINETEK LS15+VCTF+LP-54 1m	145000587	
Africa • LINETEK LS15+H03VV-F+PE-364 1m	145000586	
CE • LINETEK LP-34+H03VV-F + LS15 1m	145000585	
CCC • Longwell LSG-31+RVV300/300+LS-18 1m	145000568	
Argentina • Longwell LP-24+H03VV-F+LS-18 1m	145000567	
Denmark • Longwell LP-40+H03VV-F+LS-18 1m	145000566	
Switzerland • Longwell LP-37+H03VV-F+LS-18 1m	145000565	

**Table 10. Parts list—3-pin power cords (continued)**

<b>Region</b>	<b>P/N</b>	<b>CRU ID.</b>
Brazil • Longwell LP-46+H03VV-F+LS-18 1m	145000564	*
Israel • Longwell LP-41+H03VV-F+LS-18 1m	145000563	
UL • Longwell LP-30B+SPT-2 18AWG+LS-18 1m	145000562	
UK • Longwell LP-61L+H03VV-F+LS-18 1m	145000561	
Indian • Longwell LP-67+BIS+LS-18 1m	145000560	
Italy • Longwell LP-22+H03VV-F+LS-18 1m	145000559	
Korea • Longwell LP-486+KTLH03VV-F+LS-5 1m	145000558	
Australia • Longwell LP-23A+LFC-3R+LS-18 1m	145000557	
Taiwan • Longwell LP-71+VCTF+LS-33 1m	145000556	
Japan • Longwell LP-54+VCTF+LS-18 1m	145000555	
Africa • Longwell LP-39+H03VV-F+LS-18 1m	145000554	
CE • Longwell LP-34A+H03VV-F+LS-18 1m	145000553	
CCC • VOLEX GB10S3+RVV 300/500+VAC5S 1m	145000538	
UL • Volex US15S3+SPT-2 +VAC5S 1m	145000537	
UK • VOLEX MP5004+H03VV-F+VAC5S 1m	145000605	
Indian • VOLEX IA6A3+IS694+VAC5S 1m	145000536	
Switzerland • VOLEX MP232+H03VV-F+VAC5S 1m	145000524	
Italy • VOLEX IT10S3+H03VV-F+VAC5S 1m	145000535	
Denmark • VOLEX MP233D+H03VV-F+VAC5S 1m	145000534	
Korea • VOLEX M2511+KETI IEC+VAC5S 1m	145000533	
Australia • VOLEX AU10S3+H03VV-F+VAC5S 1m	145000532	
Taiwan • VOLEX TW15CS3+VCTF+VAC5S 1m	145000531	

Table 10. Parts list—3-pin power cords (continued)

Region	P/N	CRU ID.
Japan	145000530	*
• VOLEX VAC5S+VCTF+M755 1m		
Argentina	145000528	
• VOLEX VA2073+H03VV-F+VAC5S 1m		
Brazil	145000527	
• VOLEX CH10S3+H03VV-F+VAC5S 1m		
Israel	145000526	
• VOLEX SI16S3+H03VV-F+VAC5S 1m		
CE	145000525	
• VOLEX M2511+H03VV-F+VAC5S 1m		
CCC	145500003	
• lux 0036+RVV 300/300 0.75/3C+0002 1m		
Argentina	145500015	
• lux 0040+H03VV-F 0.75/3C+0011 1m		
Denmark	145500014	
• lux 0048+H03VV-F 0.75/3C+0011 1m		
Switzerland	145500013	
• lux 0027+H03VV-F 0.75/3C+0011 1m		
Brazil	145500011	
• lux 0034+H03VV-F 0.75/3C+0011 1m		
Israel	145500012	
• lux 0041+H03VV-F 0.75/3C+0011 1m		
UL	145500002	
• lux 0014+SPT-2 60°C 18/3C+0016 1m		
UK	145500000	
• lux 0031+H03VV-F 0.75/3C+0011 1m		
Indian	145500004	
• lux 0046+IS694 0.75/3C+0011 1m		
Italy	145500009	
• lux 0029+H03VV-F 0.75/3C+0011 1m		
Korea	145500008	
• lux 0033+H03VV-F 0.75/3C+0011 1m		
Australia	145500006	
• lux 0038+H03VV-F 0.75/3C+0011 1m		
Taiwan	145500007	
• lux 0019+VCTF 0.75/3C+0021 1m		
Japan	145500005	
• lux 0018(E)+VCTF 0.75/3C+0021 1m		
• Africa	145500010	
• lux 0044+H03VV-F 0.75/3C+0011 1m		
• CE	145500001	
• lux 0033+H03VV-F 0.75/3C+0011 1m		

---

## Notices

---

Lenovo may not offer the products, services, or features discussed in this document in all countries. Consult your local Lenovo representative for information on the products and services currently available in your area. Any reference to a Lenovo product, program, or service is not intended to state or imply that only that Lenovo product, program, or service may be used. Any functionally equivalent product, program, or service that does not infringe any Lenovo intellectual property right may be used instead. However, it is the user's responsibility to evaluate and verify the operation of any other product, program, or service.

Lenovo may have patents or pending patent applications covering subject matter described in this document. The furnishing of this document does not give you any license to these patents.

LENOVO GROUP LTD. PROVIDES THIS PUBLICATION "AS IS" WITHOUT WARRANTY OF ANY KIND, EITHER EXPRESS OR IMPLIED, INCLUDING, BUT NOT LIMITED TO, THE IMPLIED WARRANTIES OF NON-INFRINGEMENT, MERCHANTABILITY OR FITNESS FOR A PARTICULAR PURPOSE. Some jurisdictions do not allow disclaimer of express or implied warranties in certain transactions, therefore, this statement may not apply to you.

This information could include technical inaccuracies or typographical errors. Changes are periodically made to the information herein; these changes will be incorporated in new editions of the publication. Lenovo may make improvements and/or changes in the product(s) and/or the program(s) described in this publication at any time without notice.

The products described in this document are not intended for use in implantation or other life support applications where malfunction may result in injury or death to persons. The information contained in this document does not affect or change Lenovo product specifications or warranties. Nothing in this document shall operate as an express or implied license or indemnity under the intellectual property rights of Lenovo or third parties. All information contained in this document was obtained in specific environments and is presented as an illustration. The result obtained in other operating environments may vary.

Lenovo may use or distribute any of the information you supply in any way it believes appropriate without incurring any obligation to you.

Any references in this publication to non-Lenovo Web sites are provided for convenience only and do not in any manner serve as an endorsement of those Web sites. The materials at those Web sites are not part of the materials for this Lenovo product, and use of those Web sites is at your own risk.

Any performance data contained herein was determined in a controlled environment. Therefore, the result obtained in other operating environments may vary significantly. Some measurements may have been made on development-level systems and there is no guarantee that these measurements will be the same on generally available systems. Furthermore, some measurements may have been estimated through extrapolation. Actual results may vary. Users of this document should verify the applicable data for their specific environment.

---

## Trademarks

The following terms are either registered trademarks or trademarks of Lenovo in the United States and/or other countries:

- Lenovo®
- Lenovo logo®
- IdeaPad®
- VeriFace®
- OneKey Recovery®
- APS®
- Power Express®
- Energy Management and ReadyComm®

The following terms are trademarks of Microsoft Corporation in the United States, other countries, or both:

- Windows®
- Windows Vista®
- Windows® 7
- Windows® 8

The following are trademarks of Intel Corporation or its subsidiaries in the United States, other countries, or both:

- Intel®
- Intel® Core™ 2 Duo

Other company, product, or service names may be the trademarks or service marks of others.