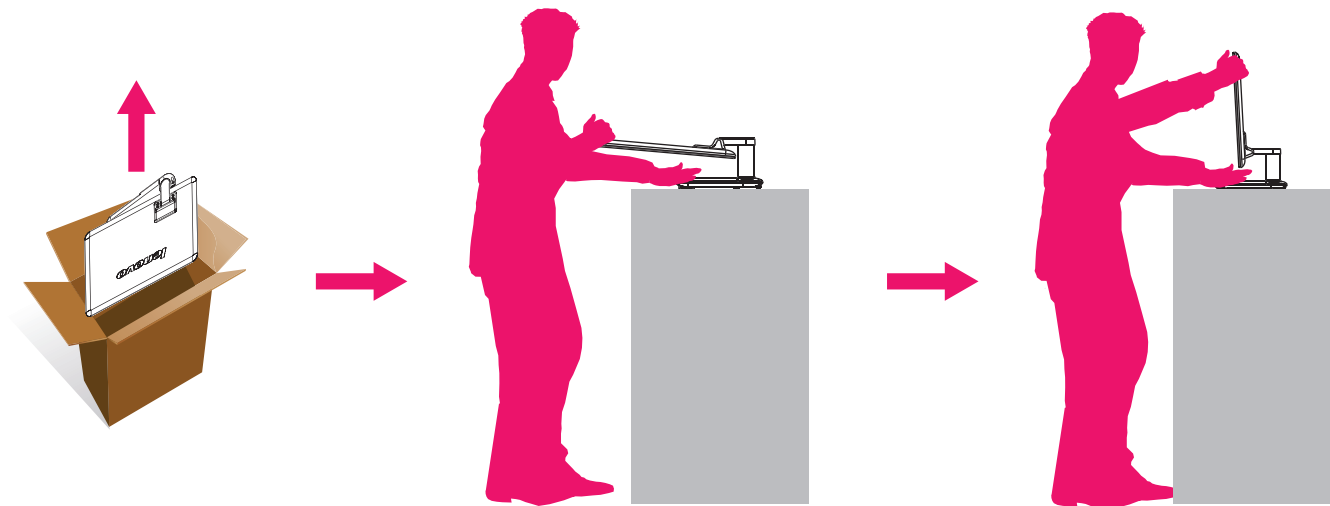




A3 Series

All-in-One Desktop PC

1. Unpack



Press the power button on the top of the base stand to turn on the computer.

! Do not put any fluid container on the base stand.

- 1** — Camera
- 2** — Built-in microphone
- 3** — Hard Disk Drive Indicator
- 4** — Bluetooth status indicator
- 5** — WIFI status indicator
- 6** — Menu/OK button
- 7** — Direction buttons

! The buttons at the bottom of the screen are touch buttons. When you touch these, the indicator lights turn on.

- 1** — Bluetooth connect button
- 2** — Mode switch button (Selected models only)

- 1** — Power button
- 2** — TV tuner connector (Selected models only)
- 3** — Power connector
- 4** — Ethernet connector
- 5** — HDMI-OUT connector (Selected models only)
- 6** — HDMI-IN connector (Selected models only)
- 7** — USB ports (4)
- 8** — Memory card reader (Selected models only)
- 9** — Microphone connector
- 10** — Headphone connector

2. Computer instructions

Connecting the wired keyboard and mouse to your computer (Selected models only)

Connect the keyboard cable to the appropriate keyboard connector (USB connector).

Connect the mouse cable to the appropriate mouse connector (USB connector).

Connect the power cords properly to grounded electrical outlets.

3. Computer stand

Adjust the angle for the best viewing experience. It can be rotated from horizontal or vertical. The stand provides stability to the computer; it is not a removable part.

! The computer stand must remain installed at all times to ensure maximum system stability.

Adjust the panel angle for the best viewing from the horizontal.

Adjust the panel angle for the best viewing from the vertical.

Do not only use one hand to adjust the panel angle to avoid the computer falling over.

4. Carry the computer

Hold the computer tightly when you carry it.

X

X

✓

A3 Series

All-in-One Desktop PC

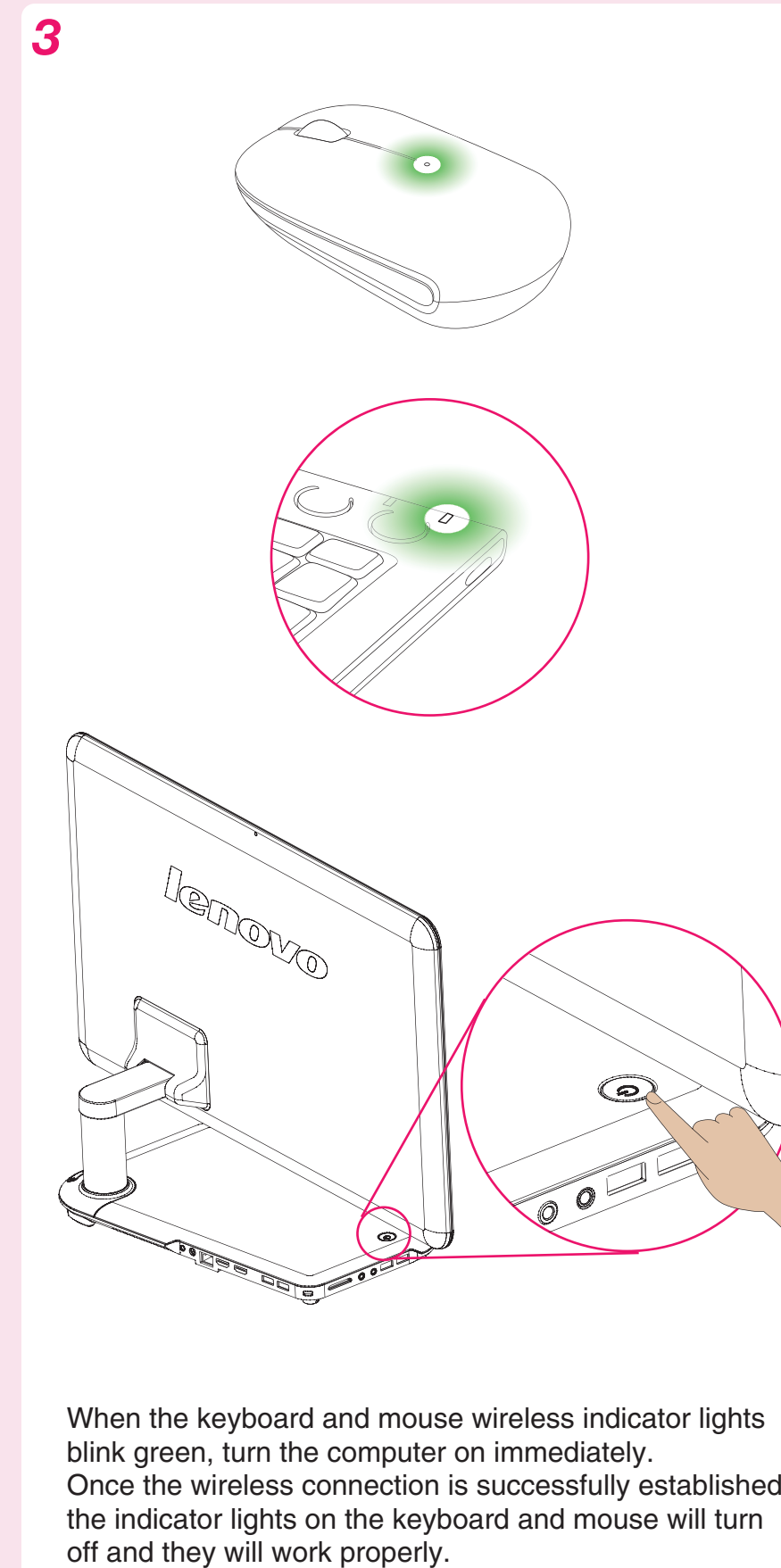
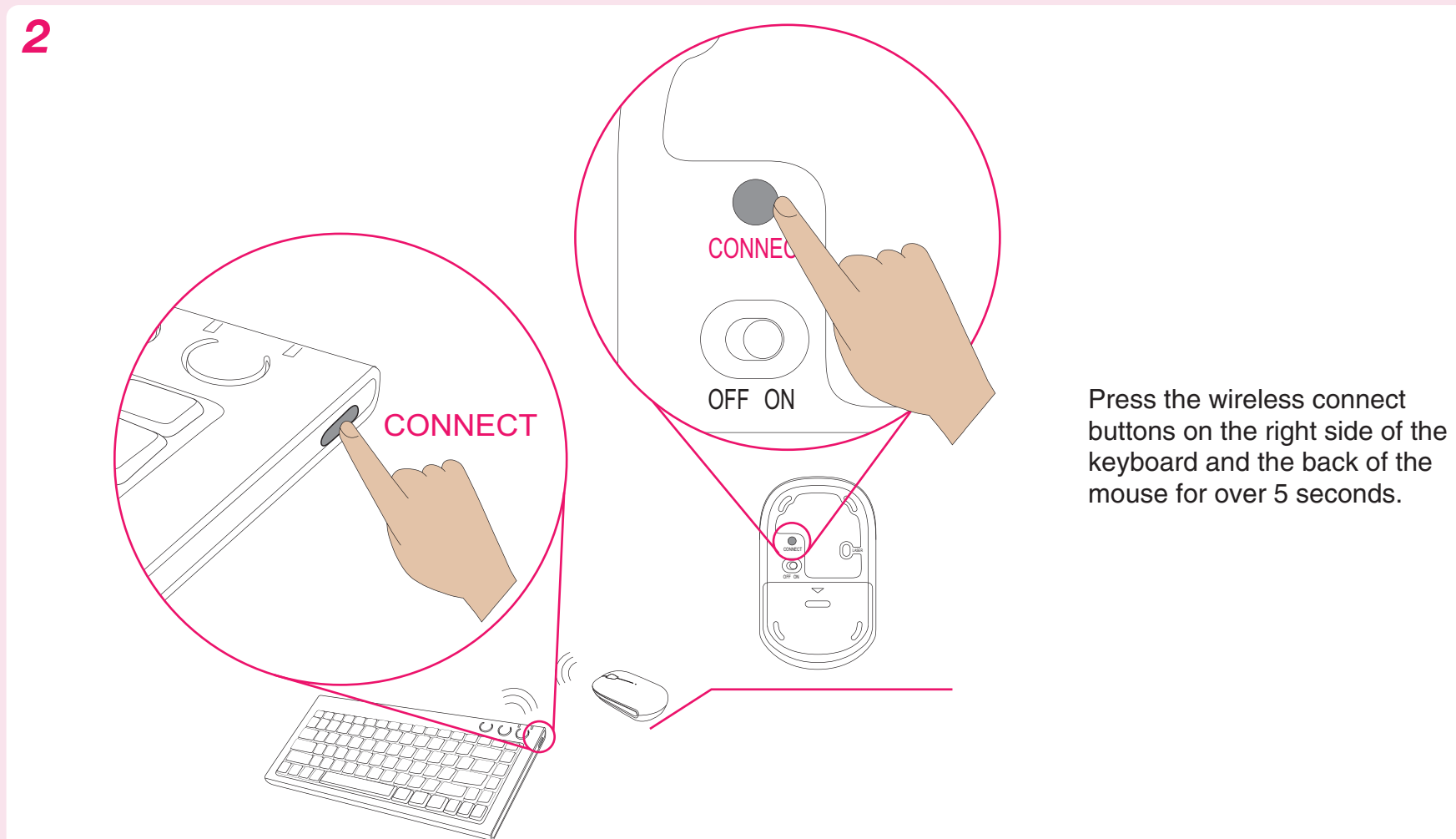
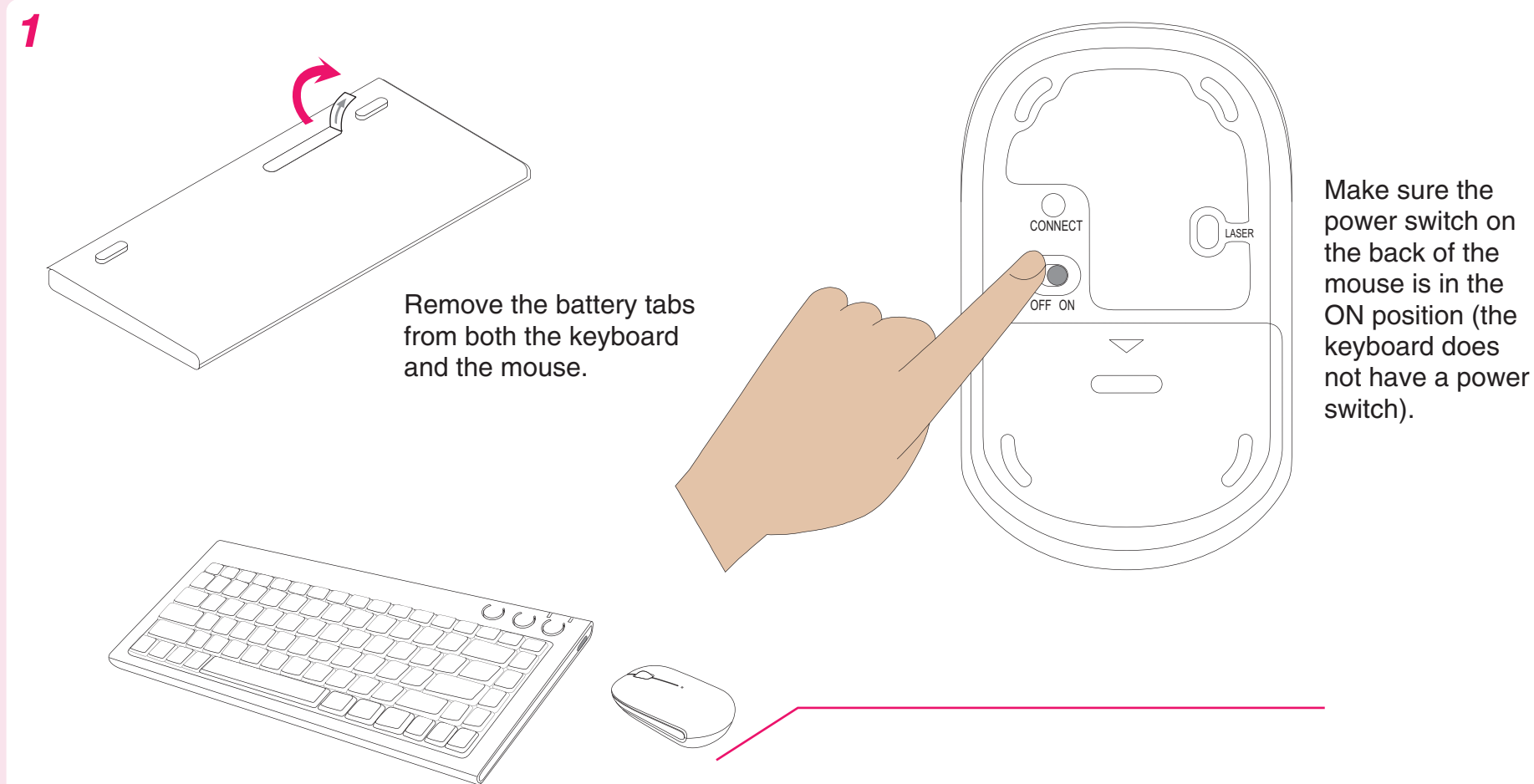
lenovo
www.lenovo.com



ideacentre

5. Wireless keyboard and mouse instructions (Only some models are equipped with wireless keyboard and mouse)

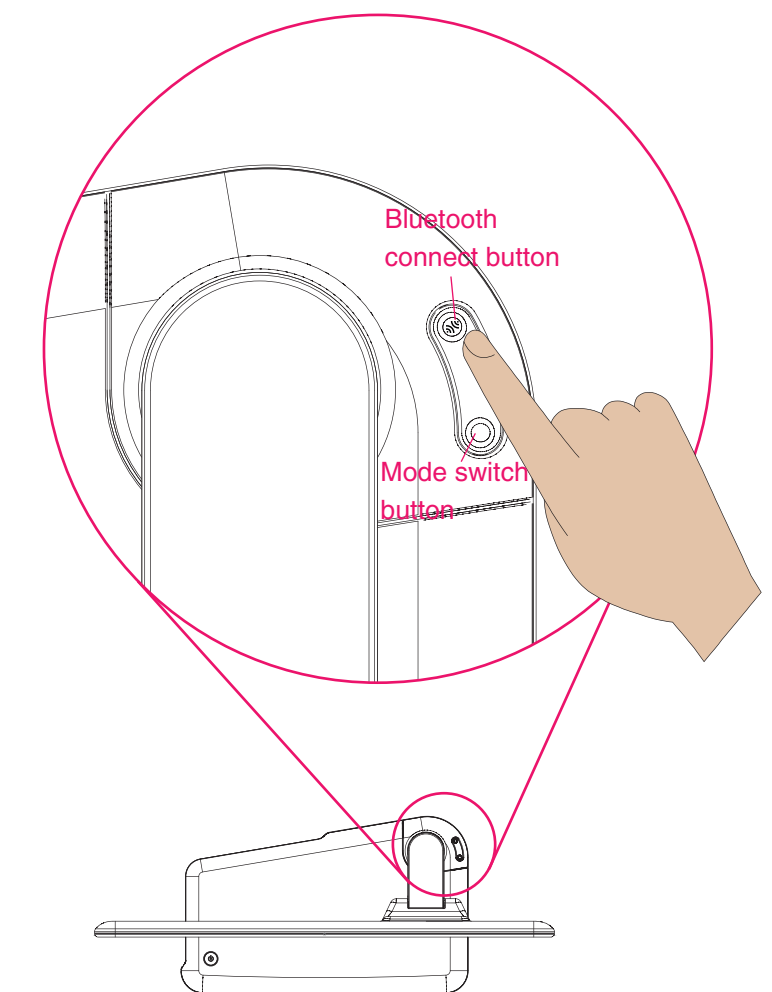
Method 1



Method 2

If the wireless keyboard and mouse still do not work, do the following:

Make sure the wireless indicator lights still blink. If they stop blinking, press the connect buttons on the keyboard and mouse again, then press the bluetooth connect button on the base stand for over 5 seconds until the indicator lights turn off and the wireless connection established.



If connection is not established successfully, refer to "Wireless keyboard and mouse instructions" in the User Guide.