

The following information refers to Stick 300 machine type:
90F2/PS01F [Stick 300-01IBY / Energy Star]

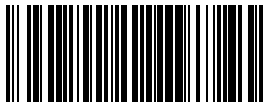
The descriptions in this guide might be different from what you see on your computer, depending on the computer model and configuration. Product design and specifications may be changed without notice.

Lenovo, the Lenovo logo, ideacentre, and the ideacentre logo are trademarks of Lenovo in the United States, other countries, or both. Windows is a trademark of the Microsoft group of companies. Other company, product, or service names may be trademarks or service marks of others.

© Copyright Lenovo 2015. LIMITED AND RESTRICTED RIGHTS
NOTICE: If data or software is delivered pursuant to a General Services Administration "GSA" contract, use, reproduction, or disclosure is subject to restrictions set forth in Contract No. GS-35F-05925.

Version 1.0

2015.08



SP40J79741

Connecting to the Internet

To connect to the Internet, you'll need a contract with an Internet Service Provider (ISP) and some hardware. ISPs and ISP offerings vary by country. Contact your ISP for offerings available in your country. Your computer is designed to support a wireless network that connects your computer to other devices.

Wireless network connection

For wireless networks, you can use the built-in Wi-Fi antenna to access your wireless home network. To connect your computer to the wireless network: Click or tap the network icon on the taskbar, then select the name of your router. Click or tap **Connect**, then follow the steps on the screen. Test the wireless network by opening your Web browser and accessing any Web site.

Service and Support information

The following information describes the technical support that is available for your product, during the warranty period or throughout the life of your product. Refer to the Lenovo Limited Warranty for a full explanation of Lenovo warranty terms. See "Lenovo Limited Warranty notice" later in this document for details on accessing the full warranty. If you purchased Lenovo services, refer to the following terms and conditions for detailed information:

- For Lenovo Warranty Service Upgrades or Extensions, go to: <http://support.lenovo.com/lwsu>
- For Lenovo Accidental Damage Protection Services, go to: <http://support.lenovo.com/ladps>
- Online technical support is available during the lifetime of a product at: <http://www.lenovo.com/support>

Windows help system

The Windows help system provides you with detailed information about using the Windows operating system.

To access the Windows help system, do the following: Open the Start menu and then click or tap **Get Started** to get more details.

You also can enter **Get Started** or what you're looking for in the search box on the taskbar. You'll get suggestions and answers to your questions about Windows and the best search results available from your PC and the Internet.

To perform system recovery after a serious error in Windows 10, click or tap the Start button and select **Settings → Update & security → Recovery**. Then, follow the instructions on the screen for system recovery.

ATTENTION: The Windows operating system is provided by Microsoft Corporation. Please use it in accordance with the END USER LICENSE AGREEMENT (EULA) between you and Microsoft. For any question related to the operating system, please contact Microsoft directly.

Accessing other manuals

The *Important Product Information Guide* has been preloaded onto your computer. Click or tap the **Manual** icon from the desktop to access this guide.

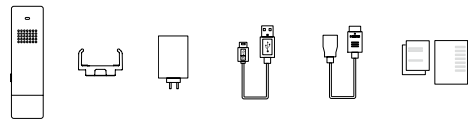
Downloading manuals

The latest electronic publications for your computer are available from the Lenovo Support Web site. To download the publications, go to: www.lenovo.com/UserManuals.

ideacentre Stick 300 Quick Start Guide

Unpack

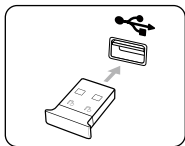
ideacentre stick 300 Holder AC power adapter Micro USB to standard USB 2.0 cable¹ HDMI extension cable² Publications



1. USB: Universal Serial Bus
2. HDMI: High-Definition Multimedia Interface

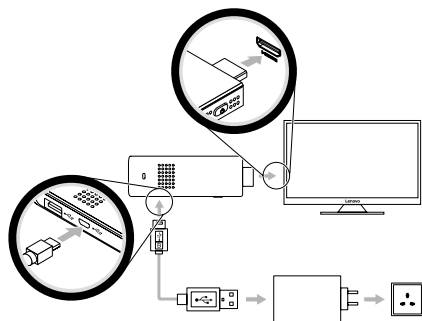
NOTE: Some models may contain items that are not listed.

1 Connect the keyboard and mouse



NOTE: We recommend using a 2.4Ghz RF combo keyboard and mouse, which are not included in this package. These accessories can be purchased at www.lenovo.com. Alternatively, you can use a USB hub with 2 or more ports to support a USB keyboard and mouse.

2 Connect the power cable and peripherals

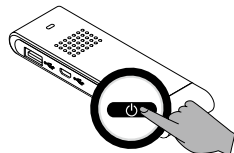


NOTE: Use the HDMI extension cable if it is inconvenient to connect the stick PC to the television or LCD monitor directly.

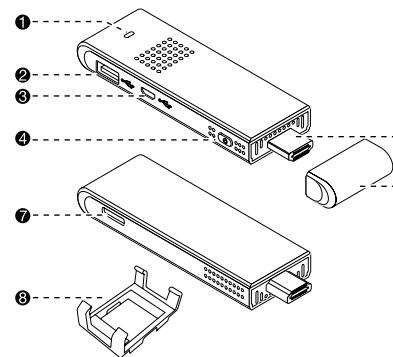
NOTE: Adjust the picture size or settings of your television or LCD monitor if the image cannot be played in full screen mode or the image runs beyond the screen.

For more technical support, go to: <http://www.lenovo.com/support>, and then enter "Stick 300" in the product name search box and select the **Solutions** tab.

3 Turn on the computer

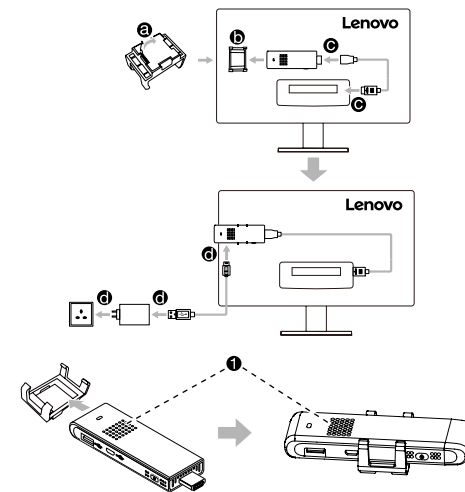


Parts and locations



- | | |
|---------------------------|----------------------|
| 1 Power indicator | 5 HDMI connector |
| 2 USB 2.0 connector | 6 Protective cap |
| 3 Micro USB 2.0 connector | 7 Micro-SD-card slot |
| 4 Power button | 8 Holder |

Holder installation



1 Air vents

Take the stick PC holder out of the package. The holder can be attached to your television or LCD monitor. We recommend finding a suitable place for the holder in case the cables are not long enough.

NOTE: To attach the holder, find a flat, clean surface on your television or LCD monitor. Then remove the backing paper and press the holder down firmly on the surface.

NOTE: The adhesive paper of the holder can be used only once.
ATTENTION: Be sure not to block any air vents on the computer. Blocked air vents may cause thermal problems.