

User Manual for Lenovo wireless mouse N3903



Product name 產品名稱: Lenovo N3903 wireless mouse

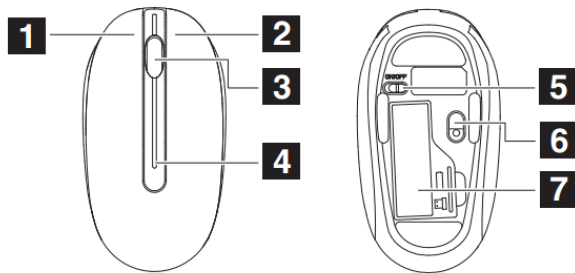
Model 產品型號: N3903

Package:

In the box 包裝內容物



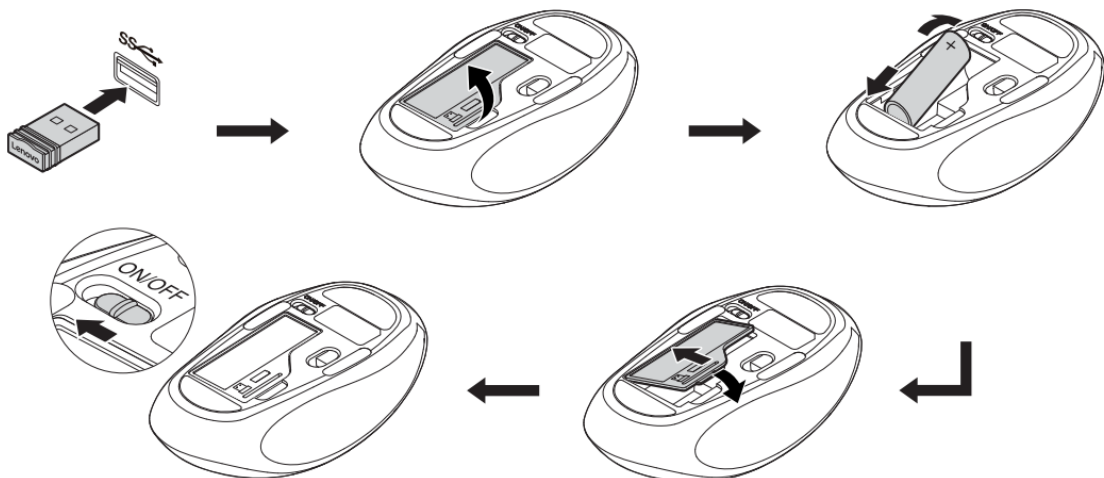
Product overview 產品功能描述



- 1** Left button 左鍵
- 2** Right button 右鍵
- 3** Scrolling wheel 滾輪
- 4** Light-emitting diode (LED) indicator LED裝飾條
- 5** Power switch 開關
- 6** Optical sensor 光學傳感器
- 7** Battery compartment cover 電池蓋

使用方法

Connecting the mouse to your computer 將滑鼠連接到電腦



The LED indicator is lit in orange for three seconds when you turn on the mouse.

The LED indicator flashes in orange when the battery power is low. Replace the battery with a new one.

打開滑鼠后，LED橙色指示燈會亮3秒。

當電池電量不足時，LED橙色指示燈亮閃爍。需更換新的電池。

Operating system 可相容系統

Windows10、Windows 8.1、Windows8、Windows 7、Windows XP、VISTA

Specification 規格

Working Voltage 工作電壓:	1.5V
Working current 工作電流:	≤ 40mA
Consumption 功率	P≤60mW
Frequency rage 頻率範圍	2403~2479MHz
Max output power 最大功率輸出	0dBm

Operational specification:操作環境要求

Temperature 溫度:0 ~40°C

humidity 濕度: 40%~90% at 25°C

Storage:儲存環境要求

Temperature 溫度: -40 ~55°C

Humidity 濕度: < 93% at 40°C

FCC compliance statement

This equipment has been tested and found to comply with the limits for a Class B digital device, pursuant to Part 15 of the FCC Rules. These limits are designed to provide reasonable protection against harmful interference in a residential installation.

This equipment generates, uses and can radiate radio frequency energy and, if not installed and used in accordance with the instructions, may cause harmful interference to radio communications.

However, there is no guarantee that interference will not occur in a particular installation.

If this equipment does not cause harmful interference to radio or television reception, which can be determined by turning the equipment off and on, the user is encouraged to try to correct the interference by one or more of the following measures:

- Reorient or relocate the receiving antenna.
- Increase the separation between the equipment and receiver.
- Connect the equipment into an outlet on a circuit different from that to which the receiver is connected.
- Consult the dealer or an experienced radio/TV technician for help.

This device complies with part 15 of the FCC Rules. Operation is subject to the following conditions:

- (1) This device may not cause harmful interference and
- (2) This device must accept any interference received, including interference that may cause undesired operation.

CAUTION! Any changes or modifications not expressly approved by the grantee of this device could void the user's authority to operate.

CAN ICES-3(B)/NMB-3(B)

This device complies with Industry Canada licence-exempt RSS standard(s).

Operation is subject to the following two conditions: (1) this device may not cause interference, and (2) this device must accept any interference, including interference that may cause undesired operation of the device.

Le présent appareil est conforme aux CNR d'Industrie Canada applicables aux appareils radio exempts de licence. L'exploitation est autorisée aux deux conditions suivantes : (1) l'appareil ne doit pas produire de brouillage, et (2) l'utilisateur de l'appareil doit accepter tout brouillage radioélectrique subi, même si le brouillage est susceptible d'en compromettre le fonctionnement.

This equipment complies with Industry Canada radiation exposure limits set forth for an uncontrolled environment.

Cet équipement est conforme à l'exposition aux rayonnements Industry Canada limités établies pour un environnement non contrôlé.

NCC

根據低功率電波輻射性電機管理辦法規定:

第十二條 經型式認證合格之低功率射頻電機，非經許可，公司、商號或使用者均不得擅自變更頻率、加大功率或變更原設計之特性及功能。

第十四條 低功率射頻電機之使用不得影響飛航安全及干擾合法通信；經發現有干擾現象時，應立即停用，並改善至無干擾時方得繼續使用。

前項合法通信，指依電信法規定作業之無線電通信。低功率射頻電機須忍受合法通信或工業、科學及醫療用電波輻射性電機設備之干擾。

Taiwan RoHS

單元 Unit	限用物質及其化學符號 Restricted substances and its chemical symbols					
	鉛Lead (Pb)	汞Mercury (Hg)	鎘Cadmium (Cd)	六價鉻 Hexavalent chromium (Cr ⁺⁶)	多溴聯苯 Polybrominated biphenyls (PBB)	多溴二苯醚 Polybrominated diphenyl ethers (PBDE)
印刷電路板 組件	—	○	○	○	○	○
塑膠部件/外 殼	○	○	○	○	○	○
金屬部件/螺 絲	—	○	○	○	○	○
線材及接口	—	○	○	○	○	○

備考 1. “○” 係指該項限用物質之百分比含量未超出百分比含量基準值。
Note 1: “○” indicates that the percentage content of the restricted substance does not exceed the percentage of reference value of presence.

備考 2. “—” 係指該項限用物質為排除項目。
Note 2: The “—” indicates that the restricted substance corresponds to the exemption.