

Lenovo V310-14ISK
Lenovo V310-15ISK
Hardware
Maintenance
Manual

Notes:

- Before using this information and the product it supports, be sure to read the general information under “Notices” on page 100.
- This manual applies to the following models: Lenovo V310-14ISK/Lenovo V310-15ISK. The illustrations used in this manual are for Lenovo V310-15ISK unless otherwise stated.

First Edition (Mar. 2016)

© Copyright Lenovo 2016. All rights reserved.

LIMITED AND RESTRICTED RIGHTS NOTICE: If data or software is delivered pursuant a General Services Administration “GSA” contract, use, reproduction, or disclosure is subject to restrictions set forth in Contract No. GS-35F-05925.

© 2016 Lenovo

Contents

About this manual	iv	1050 PCI Express Mini Card for wireless LAN.....	42
Safety information	1	1060 DIMM	44
General safety	2	1070 ODD Board and 2nd battery board (Lenovo V310-15ISK).....	45
Electrical safety	3	1080 USB board and fingerprint reader module.....	47
Safety inspection guide	5	1090 Fan and heat sink assembly.....	50
Handling devices that are sensitive to electrostatic discharge.....	6	1100 System board	52
Grounding requirements.....	6	1110 Speaker.....	56
Safety notices: multilingual translations.....	7	1120 Power board and LED board (Lenovo V310-15ISK)	57
Laser compliance statement.....	14	1130 Upper case.....	59
Important service information	16	1140 LCD unit.....	65
Strategy for replacing FRUs	16	1150 LCD hinges	67
Strategy for replacing a hard disk drive	17	1160 EDP cable and integrated camera	69
Important notice for replacing a system board	17	Locations	71
Important information about replacing RoHS compliant FRUs	18	Front and right-side view	71
General checkout	19	Bottom and left-side view	73
What to do first	20	Parts list	75
Power system checkout.....	21	Overall	76
Checking the AC adapter	21	LCD FRUs	93
Checking operational charging	22	Miscellaneous parts	96
Checking the battery pack	22	AC adapters.....	96
Related service information	23	Screws.....	96
Restoring the factory contents by using OneKey Recovery	23	Power cords.....	97
Restore of factory default	23	Notices	100
Passwords	24	Trademarks	101
Power-on password	24		
Hard-disk password	24		
Administrator password	24		
Power management	25		
Putting the computer to sleep or shutting it down	25		
Putting your computer to sleep.....	25		
Shutting down the computer	25		
Lenovo V310-14ISK/Lenovo V310-15ISK	26		
Specifications	26		
Status indicators	28		
Fn key combinations/Hotkeys.....	29		
FRU replacement notices	30		
Screw notices	30		
Removing and replacing an FRU	31		
1010 Removable module (on select models)	32		
1020 Base cover.....	35		
1030 Battery pack.....	39		
1040 Hard disk drive.....	40		

About this manual

This manual contains service and reference information for the following Lenovo product:

Lenovo V310-14ISK/Lenovo V310-15ISK

Use this manual to troubleshoot problems.

The manual is divided into the following sections:

- The common sections provide general information, guidelines, and safety information required for servicing computers.
- The product-specific section includes service, reference, and product-specific parts information.

Important:

This manual is intended only for trained servicers who are familiar with Lenovo products. Use this manual to troubleshoot problems effectively.

Before servicing a Lenovo product, make sure to read all the information under “Safety information” on page 1 and “Important service information” on page 16.

Safety information

This chapter presents the following safety information that you need to get familiar with before you service a Lenovo V310-14ISK/Lenovo V310-15ISK computer:

- “General safety” on page 2
- “Electrical safety” on page 3
- “Safety inspection guide” on page 5
- “Handling devices that are sensitive to electrostatic discharge” on page 6
- “Grounding requirements” on page 6
- “Safety notices: multilingual translations” on page 7
- “Laser compliance statement” on page 14

General safety

Follow these rules below to ensure general safety:

- Observe a good housekeeping in the area where the machines are put during and after the maintenance.
- When lifting any heavy object:
 1. Make sure that you can stand safely without slipping.
 2. Distribute the weight of the object equally between your feet.
 3. Use a slow lifting force. Never move suddenly or twist when you attempt to lift it.
 4. Lift it by standing or pushing up with your leg muscles; this action could avoid the strain from the muscles in your back. Do not attempt to lift any object that weighs more than 16 kg (35 lb) or that you think is too heavy for you.
- Do not perform any action that causes hazards to the customer, or that makes the machine unsafe.
- Before you start the machine, make sure that other service representatives and the customer are not in a hazardous position.
- Please remove covers and other parts in a safe place, away from all personnel, while you are servicing the machine.
- Keep your toolcase away from walk areas so that other people will not trip over it.
- Do not wear loose clothing that can be trapped in the moving parts of the machine. Make sure that your sleeves are fastened or rolled up above your elbows. If your hair is long, fasten it.
- Insert the ends of your necktie or scarf inside clothing or fasten it with the nonconductive clip, about 8 centimeters (3 inches) from the end.
- Do not wear jewelry, chains, metal-frame eyeglasses, or metal fasteners for your clothing.

Attention: Metal objects are good electrical conductors.
- Wear safety glasses when you are hammering, drilling, soldering, cutting wire, attaching springs, using solvents, or working in any other conditions that may be hazardous to your eyes.
- After service, reinstall all safety shields, guards, labels, and ground wires. Replace any safety device that is worn or defective.
- Reinstall all covers correctly before returning the machine to the customer.
- Fan louvers on the machine help to prevent the overheating of internal components. Do not obstruct fan louvers or cover them with labels or stickers.

Electrical safety

Observe the following rules when working on electrical equipments.

Important:

Use only approved tools and test equipments. Some hand tools have handles covered with a soft material that does not insulate you when working with live electrical currents.

Many customers have rubber floor mats near their machines that contain small conductive fibers to decrease electrostatic discharges. Do not use such kind of mat to protect yourself from electrical shock.

- Find the room emergency power-off (EPO) switch, disconnecting switch or electrical outlet. If an electrical accident occurs, you can then operate the switch or unplug the power cord quickly.
- Do not work alone under hazardous conditions or near the equipment that has hazardous voltages.
- Disconnect all power before:
 - Performing a mechanical inspection
 - Working near power supplies
 - Removing or installing main units
- Before you start to work on the machine, unplug the power cord. If you cannot unplug it, ask the customer to power-off the wall box that supplies power to the machine, and to lock the wall box in the off position.
- If you need to work on a machine that has exposed electrical circuits, observe the following precautions:
 - Ensure that another person, familiar with the power-off controls, is near you.

Attention: Another person must be there to switch off the power, if necessary.
 - Use only one hand when working with powered-on electrical equipment; keep the other hand in your pocket or behind your back.

Attention: An electrical shock can occur only when there is a complete circuit. By observing the above rule, you may prevent a current from passing through your body.
 - When using testers, set the controls correctly and use the approved probe leads and accessories for that tester.
 - Stand on suitable rubber mats (obtained locally, if necessary) to insulate you from grounds such as metal floor strips and machine frames.

Observe the special safety precautions when you work with very high voltages; instructions for these precautions are in the safety sections of maintenance information. Be extremely careful when you measure the high voltages.

- Regularly inspect and maintain your electrical hand tools for safe operational condition.
- Do not use worn or broken tools and testers.
- Never assume that power has been disconnected from a circuit. First, check it to make sure that it has been powered off.

// *Lenovo V310-14ISK/Lenovo V310-15ISK Hardware Maintenance Manual*

- Always look carefully for possible hazards in your work area. Examples of these hazards are moist floors, nongrounded power extension cables, power surges, and missing safety grounds.
- Do not touch live electrical circuits with the reflective surface of a plastic dental mirror. The surface is conductive; such touching can cause personal injury and machine damage.
- Do not service the following parts with the power on when they are removed from their normal operating places in a machine:
 - Power supply units
 - Pumps
 - Blowers and fans
 - Motor generatorsand similar units. (This practice ensures correct grounding of the units.)
- If an electrical accident occurs:
 - Caution: do not become a victim yourself.
 - Switch off the power.
 - Send the victim to get medical aid.

Safety inspection guide

The purpose of this inspection guide is to assist you in identifying potential unsafe conditions. As each machine was designed and built, required safety items were installed to protect users and service personnel from injury. This guide addresses only those items. You should use good judgment to identify potential safety hazards according to the attachment of non-Lenovo features or options not covered by this inspection guide.

If any unsafe conditions are present, you must determine how serious the apparent hazard could be and whether you can continue without first correcting the problem.

Consider these conditions and the safety hazards they present:

- Electrical hazards, especially primary power (primary voltage on the frame can cause serious or fatal electrical shock)
- Explosive hazards, such as a damaged CRT face or a bulging capacitor
- Mechanical hazards, such as loose or missing hardware

To determine whether there are any potential unsafe conditions, use the following checklist at the beginning of every service task. Begin the checks with the power off, and the power cord disconnected.

Checklist:

1. Check exterior covers for damage (loose, broken, or sharp edges).
2. Turn off the computer. Disconnect the power cord.
3. Check the power cord for:
 - a. A third-wire ground connector in good condition. Use a meter to measure third-wire ground continuity for 0.1 ohm or less between the external ground pin and the frame ground.
 - b. The power cord should be the type specified in the parts list.
 - c. Insulation must not be frayed or worn.
4. Check for cracked or bulging batteries.
5. Remove the cover.
6. Check for any obvious non-Lenovo alterations. Use good judgment as to the safety of any non-Lenovo alterations.
7. Check inside the unit for any obvious unsafe conditions, such as metal filings, contamination, water or other liquids, or signs of fire or smoke damage.
8. Check for worn, frayed, or pinched cables.
9. Check that the power-supply cover fasteners (screws or rivets) have not been removed or tampered with.

Handling devices that are sensitive to electrostatic discharge

Any computer part containing transistors or integrated circuits (ICs) should be considered sensitive to electrostatic discharge (ESD). ESD damage can occur when there is a difference in charge between objects. Protect against ESD damage by equalizing the charge so that the machine, the part, the work mat, and the person handling the part are all at the same charge.

Notes:

1. Use product-specific ESD procedures when they exceed the requirements noted here.
2. Make sure that the ESD protective devices you use have been certified (ISO 9000) as fully effective.

When handling ESD-sensitive parts:

- Keep the parts in protective packages until they are inserted into the product.
- Avoid contact with other people.
- Wear a grounded wrist strap against your skin to eliminate static on your body.
- Prevent the part from touching your clothing. Most clothing is insulative and retains a charge even when you are wearing a wrist strap.
- Use the black side of a grounded work mat to provide a static-free work surface. The mat is especially useful when handling ESD-sensitive devices.
- Select a grounding system, such as those listed below, to provide protection that meets the specific service requirement.

Note:

The use of a grounding system to guard against ESD damage is desirable but not necessary.

- Attach the ESD ground clip to any frame ground, ground braid, or green-wire ground.
- When working on a double-insulated or battery-operated system, use an ESD common ground or reference point. You can use coax or connector-outside shells on these systems.
- Use the round ground prong of the ac plug on ac-operated computers.

Grounding requirements

Electrical grounding of the computer is required for operator safety and correct system function. Proper grounding of the electrical outlet can be verified by a certified electrician.

Safety notices: multilingual translations

The safety notices in this section are provided in English, French, German, Hebrew, Italian, Japanese, and Spanish.

Safety notice 1

Before the computer is powered on after FRU replacement, make sure all screws, springs, and other small parts are in place and are not left loose inside the computer. Verify this by shaking the computer and listening for rattling sounds. Metallic parts or metal flakes can cause electrical shorts.

Avant de remettre l'ordinateur sous tension après remplacement d'une unité en clientèle, vérifiez que tous les ressorts, vis et autres pièces sont bien en place et bien fixées. Pour ce faire, secouez l'unité et assurez-vous qu'aucun bruit suspect ne se produit. Des pièces métalliques ou des copeaux de métal pourraient causer un court-circuit.

Bevor nach einem FRU-Austausch der Computer wieder angeschlossen wird, muß sichergestellt werden, daß keine Schrauben, Federn oder andere Kleinteile fehlen oder im Gehäuse vergessen wurden. Der Computer muß geschüttelt und auf Klappergeräusche geprüft werden. Metallteile oder-splitter können Kurzschlüsse erzeugen.

לפני הפעלת המחשב לאחר החלפת FRU יש לוודא שכל הברגים, הקפיצים, וחלקים קטנים אחרים נמצאים במקומם ואינם חופשיים לזוז בתוך המחשב. כדי לוודא זאת, יש ללטלט את המחשב ולהקשיב לגילוי קולות שקשוק. חלקי או שבבי מתכת עלולים לגרום לקצרים חשמליים.

Prima di accendere l'elaboratore dopo che é stata effettuata la sostituzione di una FRU, accertarsi che tutte le viti, le molle e tutte le altri parti di piccole dimensioni siano nella corretta posizione e non siano sparse all'interno dell'elaboratore. Verificare ciò scuotendo l'elaboratore e prestando attenzione ad eventuali rumori; eventuali parti o pezzetti metallici possono provocare cortocircuiti pericolosi.

FRU の交換後、コンピュータの電源を入れる前に、ねじ、バネ、その他の小さな部品がすべて正しい位置にあり、またコンピュータの内部で緩んでいないことを確認してください。これを確認するには、コンピュータを振って、カチャカチャと音がしないか確かめます。金属部品や金属破片はショートの原因になることがあります。

Antes de encender el sistema despues de sustituir una FRU, compruebe que todos los tornillos, muelles y demás piezas pequeñas se encuentran en su sitio y no se encuentran sueltas dentro del sistema. Compruébelo agitando el sistema y escuchando los posibles ruidos que provocarían. Las piezas metálicas pueden causar cortocircuitos eléctricos.

Safety notice 2

⚠ DANGER

Some standby batteries contain a small amount of nickel and cadmium. Do not disassemble a standby battery, recharge it, throw it into fire or water, or short-circuit it. Dispose of the battery as required by local ordinances or regulations. Use only the battery in the appropriate parts listing. Use of an incorrect battery can result in ignition or explosion of the battery.

Certaines batteries de secours contiennent du nickel et du cadmium. Ne les démontez pas, ne les rechargez pas, ne les exposez ni au feu ni à l'eau. Ne les mettez pas en court-circuit. Pour les mettre au rebut, conformez-vous à la réglementation en vigueur. Lorsque vous remplacez la pile de sauvegarde ou celle de l'horloge temps réel, veillez à n'utiliser que les modèles cités dans la liste de pièces détachées adéquate. Une batterie ou une pile inappropriée risque de prendre feu ou d'exploser.

Die Bereitschaftsbatterie, die sich unter dem Diskettenlaufwerk befindet, kann geringe Mengen Nickel und Cadmium enthalten. Sie darf nicht zerlegt, wiederaufgeladen, kurzgeschlossen, oder Feuer oder Wasser ausgesetzt werden. Bei der Entsorgung die örtlichen Bestimmungen für Sondermüll beachten. Beim Ersetzen der Bereitschafts- oder Systembatterie nur Batterien des Typs verwenden, der in der Ersatzteilliste aufgeführt ist. Der Einsatz falscher Batterien kann zu Entzündung oder Explosion führen.

סוללות המתנה מסוימות מכילות כמות קטנה של ניקל וקדמיום. אין לפרק סוללת המתנה, לטעון אותה מחדש, להשליך אותה לנאש או למים או לקצר אותה. יש לשלוק את הסוללה בנדרש על ידי התקנות והחוקים המקומיים. יש להשתמש רק בסוללה המופיעה ברשימת החלקים המתאימה. שימוש בסוללה לא מתאימה עלול לגרום להצתה או התפוצצות של הסוללה.

Alcune batterie di riserva contengono una piccola quantità di nichel e cadmio. Non smontarle, ricaricarle, gettarle nel fuoco o nell'acqua né cortocircuitarle. Smaltirle secondo la normativa in vigore (DPR 915/82, successive disposizioni e disposizioni locali). Quando si sostituisce la batteria dell'RTC (real time clock) o la batteria di supporto, utilizzare soltanto i tipi inseriti nell'appropriato Catalogo parti. L'impiego di una batteria non adatta potrebbe determinare l'incendio o l'esplosione della batteria stessa.

予備バッテリーの中には少量のニッケルとカドミウムが含まれているものがあります。したがって、予備バッテリーの分解、再充電、火または水の中への投棄、またはショートさせることは決して行わないでください。バッテリーを廃棄する場合は地方自治体の条例に従ってください。適切なパーツ・リストにあるバッテリーだけを使用してください。誤ったバッテリーを使用すると、バッテリーが発火したり、爆発したりすることがあります。

Algunas baterías de reserva contienen una pequeña cantidad de níquel y cadmio. No las desmonte, ni recargue, ni las eche al fuego o al agua ni las cortocircuite. Deséchelas tal como dispone la normativa local. Utilice sólo baterías que se encuentren en la lista de piezas. La utilización de una batería no apropiada puede provocar la ignición o explosión de la misma.

Safety notice 3**⚠ DANGER**

The battery pack contains small amounts of nickel. Do not disassemble it, throw it into fire or water, or short-circuit it. Dispose of the battery pack as required by local ordinances or regulations. Use only the battery in the appropriate parts listing when replacing the battery pack. Use of an incorrect battery can result in ignition or explosion of the battery.

La batterie contient du nickel. Ne la démontez pas, ne l'exposez ni au feu ni à l'eau. Ne la mettez pas en court-circuit. Pour la mettre au rebut, conformez-vous à la réglementation en vigueur. Lorsque vous remplacez la batterie, veillez à n'utiliser que les modèles cités dans la liste de pièces détachées adéquate. En effet, une batterie inappropriée risque de prendre feu ou d'exploser.

Akkus enthalten geringe Mengen von Nickel. Sie dürfen nicht zerlegt, wiederaufgeladen, kurzgeschlossen, oder Feuer oder Wasser ausgesetzt werden. Bei der Entsorgung die örtlichen Bestimmungen für Sondermüll beachten. Beim Ersetzen der Batterie nur Batterien des Typs verwenden, der in der Ersatzteilliste aufgeführt ist. Der Einsatz falscher Batterien kann zu Entzündung oder Explosion führen.

מארו הסוללה מכיל כמויות קטנות של ניקל וקדמיום. אין לפרק את מארו הסוללה, להשליך אותו לאש או למים או לקצר אותו. יש לשלוק את מארו הסוללה כנדרש על ידי התקנות והחוקים המקומיים. יש להשתמש רק בסוללה המופיעה ברשימת החלקים המתאימה בזמן החלפת מארו הסוללה. שימוש בסוללה לא מתאימה עלול לגרום להצתה או התפוצצות של הסוללה.

La batteria contiene piccole quantità di nichel. Non smontarla, gettarla nel fuoco o nell'acqua né cortocircuitarla. Smaltirla secondo la normativa in vigore (DPR 915/82, successive disposizioni e disposizioni locali). Quando si sostituisce la batteria, utilizzare soltanto i tipi inseriti nell'appropriato Catalogo parti. L'impiego di una batteria non adatta potrebbe determinare l'incendio o l'esplosione della batteria stessa.

バッテリー・パックには少量のニッケルが含まれています。バッテリー・パックを分解したり、火または水の中に投げ込んだり、ショートさせないでください。バッテリー・パックの廃棄にあたっては、地方自治体の条例または規則に従ってください。バッテリー・パックを交換するときは、適切なパーツ・リストにあるバッテリーだけを使用してください。誤ったバッテリーを使用すると、バッテリーが発火したり、爆発したりすることがあります。

Las baterías contienen pequeñas cantidades de níquel. No las desmonte, ni recargue, ni las eche al fuego o al agua ni las cortocircuite. Deséchelas tal como dispone la normativa local. Utilice sólo baterías que se encuentren en la lista de piezas al sustituir la batería. La utilización de una batería no apropiada puede provocar la ignición o explosión de la misma.

Safety notice 4

⚠ DANGER

The lithium battery can cause a fire, an explosion, or a severe burn. Do not recharge it, remove its polarized connector, disassemble it, heat it above 100°C (212°F), incinerate it, or expose its cell contents to water. Dispose of the battery as required by local ordinances or regulations. Use only the battery in the appropriate parts listing. Use of an incorrect battery can result in ignition or explosion of the battery.

La pile de sauvegarde contient du lithium. Elle présente des risques d'incendie, d'explosion ou de brûlures graves. Ne la rechargez pas, ne retirez pas son connecteur polarisé et ne la démontez pas. Ne l'exposez pas à une température supérieure à 100°C, ne la faites pas brûler et n'en exposez pas le contenu à l'eau. Mettez la pile au rebut conformément à la réglementation en vigueur. Une pile inappropriée risque de prendre feu ou d'exploser.

Die Systematterie ist eine Lithiumatterie. Sie kann sich entzünden, explodieren oder schwere Verbrennungen hervorrufen. Batterien dieses Typs dürfen nicht aufgeladen, zerlegt, über 100 C erhitzt oder verbrannt werden. Auch darf ihr Inhalt nicht mit Wasser in Verbindung gebracht oder der zur richtigen Polung angebrachte Verbindungsstecker entfernt werden. Bei der Entsorgung die örtlichen Bestimmungen für Sondermüll beachten. Beim Ersetzen der Batterie nur Batterien des Typs verwenden, der in der Ersatzteilliste aufgeführt ist. Der Einsatz falscher Batterien kann zu Entzündung oder Explosion führen.

סוללת הליתיום עלולה לגרום לשריפה, להתפוצצות או לכוויות קשות. אין לטעון אותה מחדש, לטלוק את המחבר המקוטב שלה, לפרק אותה או לחמם אותה לטמפרטורה העולה על 100 מעלות צלזיוס. אין לשרוף את הסוללה ואין לחשוף את תוכן התא למים. יש לטלוק את הסוללה כנדרש בתקנות ובחוקים המקומיים. יש להשתמש רק בסוללה המומינה ברשימת החלקים המתאימים. שימוש בסוללה אחרת עלול לגרום לשכנת שריפה או התפוצצות.

La batteria di supporto e una batteria al litio e puo incendiarsi, esplodere o procurare gravi ustioni. Evitare di ricaricarla, smontarne il connettore polarizzato, smontarla, riscaldarla ad una temperatura superiore ai 100 gradi centigradi, incendiarla o gettarla in acqua. Smaltirla secondo la normativa in vigore (DPR 915/82, successive disposizioni e disposizioni locali). L'impiego di una batteria non adatta potrebbe determinare l'incendio o l'esplosione della batteria stessa.

リチウム・バッテリーは、火災、爆発、または重症のやけどを引き起こすことがあります。バックアップ・バッテリーの充電、その極性コネクタの取り外し、バッテリー本体の分解、100°C (212°F) 以上への加熱、焼却、電池の中身を水に浸すことはしないでください。バッテリーを廃棄する場合は地方自治体の条例に従ってください。適切なパーツ・リストにあるバッテリーだけを使用してください。誤ったバッテリーを使用すると、バッテリーが発火したり、爆発したりすることがあります。

La batería de repuesto es una batería de litio y puede provocar incendios, explosiones o quemaduras graves. No la recargue, ni quite el conector polarizado, ni la desmonte, ni caliente por encima de los 100°C (212°F), ni la incinere ni exponga el contenido de sus celdas al agua. Deséchela tal como dispone la normativa local.

Safety notice 5

If the LCD breaks and the fluid from inside the LCD gets into your eyes or on your hands, immediately wash the affected areas with water at least for 15 minutes. Seek medical care if any symptoms caused by the fluid are present after washing.

Si le panneau d'affichage à cristaux liquides se brise et que vous recevez dans les yeux ou sur les mains une partie du fluide, rincez-les abondamment pendant au moins quinze minutes. Consultez un médecin si des symptômes persistent après le lavage.

Die Leuchtstoffröhre im LCD-Bildschirm enthält Quecksilber. Bei der Entsorgung die örtlichen Bestimmungen für Sondermüll beachten. Der LCD-Bildschirm besteht aus Glas und kann zerbrechen, wenn er unsachgemäß behandelt wird oder der Computer auf den Boden fällt. Wenn der Bildschirm beschädigt ist und die darin befindliche Flüssigkeit in Kontakt mit Haut und Augen gerät, sollten die betroffenen Stellen mindestens 15 Minuten mit Wasser abgespült und bei Beschwerden anschließend ein Arzt aufgesucht werden.

אם מסך הנביש הנוזלי (LCD) נשבר והנוזל מתוך המסך בא במגע עם עיניים או ידיים, שטפו את האזורים הנוגעים מיד במים במשך 15 דקות לפחות. פנו לקבלת עזרה רפואית אם תסמינים הנובעים מהמגע עם הנוזל נמשכים לאחר השטיפה.

Nel caso che caso l'LCD si dovesse rompere ed il liquido in esso contenuto entrasse in contatto con gli occhi o le mani, lavare immediatamente le parti interessate con acqua corrente per almeno 15 minuti; poi consultare un medico se i sintomi dovessero permanere.

LCD が破損し、LCD 中の液体が目に入ったり、手に触れたりした場合は、液体が触れた部分を少なくとも 15 分間洗い流してください。洗い流した後に、液体によって何らかの症状が現れた場合は、医師の治療を受けてください。

Si la LCD se rompe y el fluido de su interior entra en contacto con sus ojos o sus manos, lave inmediatamente las áreas afectadas con agua durante 15 minutos como mínimo. Obtenga atención médica si se presenta algún síntoma del fluido despues de lavarse.

Safety notice 6

⚠ DANGER

To avoid shock, do not remove the plastic cover that protects the lower part of the inverter card.

Afin d'éviter tout risque de choc électrique, ne retirez pas le cache en plastique protégeant la partie inférieure de la carte d'alimentation.

Aus Sicherheitsgründen die Kunststoffabdeckung, die den unteren Teil der Spannungswandlerplatine umgibt, nicht entfernen.

כדי למנוע התחשמלות, אין להסיר את מכסה הפלסטיק המגן על חלקו התחתון של הכרטיס ההפוך.

Per evitare scosse elettriche, non rimuovere la copertura in plastica che avvolge la parte inferiore della scheda invertitore.

感電を防ぐため、インバーター・カードの下部を保護しているプラスチック・カバーを外さないでください。

Para evitar descargas, no quite la cubierta de plástico que rodea la parte baja de la tarjeta invertida.

Safety notice 7

⚠ DANGER

Though the main batteries have low voltage, a shorted or grounded battery can produce enough current to burn personnel or combustible materials.

Bien que le voltage des batteries principales soit peu élevé, le court-circuit ou la mise à la masse d'une batterie peut produire suffisamment de courant pour brûler des matériaux combustibles ou causer des brûlures corporelles graves.

Obwohl Hauptbatterien eine niedrige Spannung haben, können sie doch bei Kurzschluß oder Erdung genug Strom abgeben, um brennbare Materialien zu entzünden oder Verletzungen bei Personen hervorzurufen.

אף שהסוללות הראשיות הן בעלות מתח נמוך, סוללה מקוצרת או מוארקת עלולה להפיק זרם מספיק לגרימת כוויות או להצתת חומרים דליקים.

Sebbene le batterie di alimentazione siano a basso voltaggio, una batteria in corto circuito o a massa può fornire corrente sufficiente da bruciare materiali combustibili o provocare ustioni ai tecnici di manutenzione.

メイン・バッテリーの電圧は低くても、ショートしたり、接地したバッテリーが、作業者にやけどを負わせたり、可燃物を燃やすだけの電流を発生させる場合があります。

Aunque las baterías principales tienen un voltaje bajo, una batería cortocircuitada o con contacto a tierra puede producir la corriente suficiente como para quemar material combustible o provocar quemaduras en el personal.

Safety notice 8

⚠ DANGER

Before removing any FRU, turn off the computer, unplug all power cords from electrical outlets, remove the battery pack, and then disconnect any interconnecting cables.

Avant de retirer une unité remplaçable en clientèle, mettez le système hors tension, débranchez tous les cordons d'alimentation des socles de prise de courant, retirez la batterie et déconnectez tous les cordons d'interface.

Die Stromzufuhr muß abgeschaltet, alle Stromkabel aus der Steckdose gezogen, der Akku entfernt und alle Verbindungskabel abgenommen sein, bevor eine FRU entfernt wird.

לפני סילוק FRU כלשהו, יש לכבות את המחשב, לנתק את כל כבלי החשמל משקעי החשמל, להוציא את מטריז הסוללה, ואז לנתק כבלי חיבור אחרים אם יש כאלה.

Prima di rimuovere qualsiasi FRU, spegnere il sistema, scollegare dalle prese elettriche tutti i cavi di alimentazione, rimuovere la batteria e poi scollegare i cavi di interconnessione.

FRU を取り外す前に、**ThinkPad** の電源を切って、すべての電源コードをコンセントから外してください。次に、バッテリー・パックを外し、相互接続ケーブルを外してください。

Antes de quitar una FRU, apague el sistema, desenchufe todos los cables de las tomas de corriente eléctrica, quite la batería y, a continuación, desconecte cualquier cable de conexión entre dispositivos.

Laser compliance statement

Some models of Lenovo computer are equipped from the factory with an optical storage device such as a CD-ROM drive or a DVD-ROM drive. Such devices are also sold separately as options. If one of these drives is installed, it is certified in the U.S. to conform to the requirements of the Department of Health and Human Services 21 Code of Federal Regulations (DHHS 21 CFR) Subchapter J for Class 1 laser products. Elsewhere, the drive is certified to conform to the requirements of the International Electrotechnical Commission (IEC) 825 and CENELEC EN 60 825 for Class 1 laser products.

If a CD-ROM drive, a DVD-ROM drive, or another laser device is installed, note the following:

CAUTION

Use of controls or adjustments or performance of procedures other than those specified herein might result in hazardous radiation exposure.

O uso de controles, ajustes ou desempenho de procedimentos diferentes daqueles aqui especificados pode resultar em perigosa exposição à radiação.

凡未在这里指明的任何控制用法、调整、行为，都会导致严重后果。

Pour éviter tout risque d'exposition au rayon laser, respectez les consignes de réglage et d'utilisation des commandes, ainsi que les procédures décrites.

Werden Steuer- und Einstellelemente anders als hier festgesetzt verwendet, kann gefährliche Laserstrahlung auftreten.

Az itt előírt eljárásoktól, beállításoktól és vezérlésektől eltérni a lézersugárzás veszélye miatt kockázatos!

L'utilizzo di controlli, regolazioni o l'esecuzione di procedure diverse da quelle specificate possono provocare l'esposizione a.

Использование элементов настройки и выполнение процедур иных, чем указано здесь, может привести к опасному радиационному облучению.

Použitie kontrol, úprav alebo iných vykonaní od iných výrobcov, ako je v tomto špecifikované, mohlo by mať za následok nebezpečenstvo vystavenia sa vyžiarovaniu.

本書で指定された内容以外の、お客様による整備、調整、または手順を行った場合、レーザー光の放射の危険があります。

El uso de controles o ajustes o la ejecución de procedimientos distintos de los aquí especificados puede provocar la exposición a radiaciones peligrosas.

Opening the CD-ROM drive, the DVD-ROM drive, or any other optical storage device could result in exposure to hazardous laser radiation. There are no serviceable parts inside those drives. **Do not open.**

A CD-ROM drive, a DVD-ROM drive, or any other storage device installed may contain an embedded Class 3A or Class 3B laser diode. Note the following:

 **DANGER**

Emits visible and invisible laser radiation when open. Do not stare into the beam, do not view directly with optical instruments, and avoid direct exposure to the beam.

Radiação por raio laser ao abrir. Não olhe fixo no feixe de luz, não olhe diretamente por meio de instrumentos óticos e evite exposição direta com o feixe de luz.

开启时会有激光发射时，请勿直视激光束，请勿直接查看视觉仪器，并且避免直接接触在激光光束之中。

Rayonnement laser si carter ouvert. Évitez de fixer le faisceau, de le regarder directement avec des instruments optiques, ou de vous exposer au rayon.

Laserstrahlung bei geöffnetem Gerät. Nicht direkt oder über optische Instrumente in den Laserstrahl sehen und den Strahlungsbereich meiden.

Kinyitáskor lézersugár ! Ne nézzen bele se szabad szemmel, se optikai eszközökkel. Kerülje a sugárnyalábbal való érintkezést!

Apriendo l'unità vengono emesse radiazioni laser. Non fissare il fascio, non guardarlo direttamente con strumenti ottici e evitare l'esposizione diretta al fascio.

Открывая, берегитесь лазерного излучения. Не смотрите на луч, не разглядывайте его с помощью оптических инструментов, а также избегайте прямого воздействия лазерного луча.

Keď je laserová jednotka otvorená. Vyhnite sa priamemu pohľadu a nehladte priamo s optickými nástrojmi do lúča a vyhnite sa priamemu vystaveniu lúčov.

開けるとレーザー光が放射されます。光線を見つめたり、光学機械を使って直接見たりしないでください。

Radiación láser al abrir. No mire fijamente ni examine con instrumental óptico el haz de luz. Evite la exposición directa al haz.

Important service information

This chapter presents the following important service information:

- “Strategy for replacing FRUs” on page 16
 - “Strategy for replacing a hard disk drive” on page 17
 - “Important notice for replacing a system board” on page 17
- “Important information about replacing RoHS compliant FRUs” on page 18

Important:

BIOS and device driver fixes are customer-installable. The BIOS and device drivers are posted on the customer support site:

<http://support.lenovo.com>.

Strategy for replacing FRUs

Before replacing parts:

Make sure that all software fixes, drivers, and BIOS downloads are installed before replacing any FRUs listed in this manual.

After a system board is replaced, ensure that the latest BIOS is loaded to the system board before completing the service action.

To download software fixes, drivers, and BIOS, follow the steps below:

1. Go to <http://support.lenovo.com>.
2. Enter the serial number or select a product or use Lenovo smart downloading.
3. Select the BIOS/Driver/Applications and download.
4. Follow the directions on the screen and install the necessary software.

Use the following strategy to prevent unnecessary expense for replacing and servicing FRUs:

- If you are instructed to replace an FRU, but the replacement does not solve the problem, reinstall the original FRU before you continue.
- Some computers have both a processor board and a system board. If you are instructed to replace either of them, and replacing one of them does not solve the problem, reinstall that board, and then replace the other one.
- If an adapter or a device consists of more than one FRU, any of the FRUs may be the cause of the error. Before replacing the adapter or device, remove the FRUs one by one to see if the symptoms change. Replace only the FRU that changed the symptoms.

Attention: The setup configuration on the computer you are servicing may have been customized. Running Automatic Configuration may alter the settings. Note the current configuration settings (using the View Configuration option); then, when service has been completed, verify that those settings remain in effect.

Strategy for replacing a hard disk drive

Always try to run a low-level format before replacing a hard disk drive. This will cause all customer data on the hard disk to be lost. Make sure that the customer has a current backup of the data before performing this action.

Attention: The drive startup sequence in the computer you are servicing may have been changed. Be extremely careful during write operations such as copying, saving, or formatting. If you select an incorrect drive, data or programs can be overwritten.

Important notice for replacing a system board

Some components mounted on a system board are very sensitive. Improper handling can cause damage to those components, and may cause a system malfunction.

Attention: When handling a system board:

- Do not drop the system board or apply any excessive force to it.
- Avoid rough handling of any kind.
- Avoid bending the system board and hard pushing to prevent cracking at each BGA (Ball Grid Array) chipset.

Important information about replacing RoHS compliant FRUs

RoHS, The Restriction of Hazardous Substances in Electrical and Electronic Equipment Directive (2002/95/EC) is a European Union legal requirement affecting the global electronics industry. RoHS requirements must be implemented on Lenovo products placed on the market after June 2006. Products on the market before June 2006 are not required to have RoHS compliant parts. If the original FRU parts are non-compliant, replacement parts can also be non-compliant. In all cases if the original FRU parts are RoHS compliant, the replacement part must also be RoHS compliant.

Note: RoHS and non-RoHS FRU part numbers with the same fit and function are identified with unique FRU part numbers.

Lenovo plans to transit to RoHS compliance well before the implementation date and expects its suppliers to be ready to support Lenovo's requirements and schedule in the EU. Products sold in 2005 and 2006 will contain some RoHS compliant FRUs. The following statement pertains to these products and any product Lenovo produces containing RoHS compliant FRUs.

RoHS compliant FRUs have unique FRU part numbers. Before or after the RoHS implementation date, failed RoHS compliant parts must always be replaced with RoHS compliant ones, so only the FRUs identified as compliant in the system HMM or direct substitutions for those FRUs may be used.

Products marketed before June 2006		Products marketed after June 2006	
Current or original part	Replacement FRU	Current or original part	Replacement FRU
Non-RoHS	Can be Non-RoHS	Must be RoHS	Must be RoHS
Non-RoHS	Can be RoHS		
Non-RoHS	Can sub to RoHS		
RoHS	Must be RoHS		

Note: A direct substitution is a part with a different FRU part number that is automatically shipped by the distribution center at the time of the order.

General checkout

This chapter presents the following information:

- “What to do first” on page 20
- “Power system checkout” on page 21

Before you go to the checkout, make sure to read the following important notes:

Important notes:

- **Only certified trained personnel can service the computer.**
- **Before replacing any FRU, read the entire page on removing and replacing FRUs.**
- **Carefully remove screws for reuse when replacing FRUs.**
- **Be extremely careful during such write operations as copying, saving, or formatting.** Drives in the computer that you are servicing sequence might have been altered. If you select an incorrect drive, data or programs might be overwritten.
- **Replace an FRU only with another FRU of the correct model.** When you replace an FRU, make sure that the machine model and the FRU part number are correct by referring to the FRU parts list.
- **An FRU should not be replaced just because of a single, unreproducible failure.** Single failures can occur for a variety of reasons that have nothing to do with a hardware defect, such as cosmic radiation, electrostatic discharge, or software errors. Consider replacing an FRU only when a problem recurs. If you suspect that an FRU is defective, clear the error logs and run the test again. If the error does not recur, do not replace the FRU.
- **Be careful not to replace a nondefective FRU.**

What to do first

When you do return an FRU, you must include the following information in the parts exchange form or parts return form that you attach to it:

1. Name and phone number of servicer
2. Date of service
3. Date on which the machine failed
4. Date of purchase
5. Procedure index and page number in which the failing FRU was detected
6. Failing FRU name and part number
7. Machine type, model number, and serial number
8. Customer's name and address

Note for warranty: During the warranty period, the customer may be responsible for repair costs if the computer damage was caused by misuse, accident, modification, unsuitable physical or operating environment, or improper maintenance by the customer.

The following is a list of some common items that are not covered under warranty and some symptoms that might indicate that the system was subjected to stress beyond normal use.

Before checking problems with the computer, determine whether the damage is covered under the warranty by referring to the following list:

The following are not covered under warranty:

- LCD panel cracked from the application of excessive force or from being dropped
- Scratched (cosmetic) parts
- Distortion, deformation, or discoloration of the cosmetic parts
- Plastic parts, latches, pins, or connectors that have been cracked or broken by excessive force
- Damage caused by liquid spilled into the system
- Damage caused by the improper insertion of a PC Card or the installation of an incompatible card
- Improper disk insertion or use of an optical drive
- Diskette drive damage caused by pressure on the diskette drive cover, foreign material in the drive, or the insertion of a diskette with multiple labels
- Damaged or bent diskette eject button
- Fuses blown by attachment of a nonsupported device
- Forgotten computer password (making the computer unusable)
- Sticky keys caused by spilling a liquid onto the keyboard
- Use of an incorrect AC adapter on laptop products

The following symptoms might indicate damage caused by nonwarranted activities:

- Missing parts might be a symptom of unauthorized service or modification.
- If the spindle of a hard disk drive becomes noisy, it may have been subjected to excessive force, or dropped.

Power system checkout

To verify a symptom, follow the steps below:

1. Turn off the computer.
2. Remove the battery pack.
3. Connect the AC adapter.
4. Make sure that power is supplied when you turn on the computer.
5. Turn off the computer.
6. Disconnect the AC adapter and install the charged battery pack.
7. Make sure that the battery pack supplies power when you turn on the computer.

If you suspect a power problem, see the appropriate one of the following power supply checkouts:

- “Checking the AC adapter” on page 21
- “Checking operational charging” on page 22
- “Checking the battery pack” on page 22

Checking the AC adapter

You are here because the computer fails only when the AC adapter is used.

- If the power-on indicator does not turn on, check the power cord of the AC adapter for correct continuity and installation.
- If the computer does not charge during operation, go to “Checking operational charging”.

To check the AC adapter, follow the steps below:

1. Unplug the AC adapter cable from the computer.
2. Measure the output voltage at the plug of the AC adapter cable. See the following figure:



Pin	Voltage (V DC)
1	+20
2	0

Note: Output voltage for the AC adapter pin No. 2 may differ from the one you are servicing.

3. If the voltage is not correct, replace the AC adapter.
4. If the voltage is acceptable, do the following:
 - Replace the system board.
 - If the problem persists, go to “Lenovo V310-14ISK/Lenovo V310-15ISK” on page 26.

Note: Noise from the AC adapter does not always indicate a defect.

Checking operational charging

To check whether the battery charges properly during operation, use a discharged battery pack or a battery pack that has less than 50% of the total power remaining when installed in the computer.

Perform operational charging. If the battery status indicator or icon does not light on, remove the battery pack and let it return to room temperature. Reinstall the battery pack. If the charge indicator or icon is still off, replace the battery pack.

If the charge indicator still does not light on, replace the system board. Then reinstall the battery pack. If it is still not charged, go to the next section.

Checking the battery pack

Battery charging does not start until the Power Meter shows that less than 95% of the total power remains; under this condition the battery pack can charge to 100% of its capacity. This protects the battery pack from being overcharged or from having a shortened life.

To check your battery, move your cursor to the Power Meter icon in the icon tray of the Windows® taskbar and wait for a moment (but do not click it), and the percentage of battery power remaining is displayed. To get detailed information about the battery, double-click the Power Meter icon.

Note: If the battery pack becomes hot, it may not be able to be charged. Remove it from the computer and leave it at room temperature for a while. After it cools down, reinstall and recharge it.

Related service information

This chapter presents the following information:

- “Restoring the factory contents by using OneKey Recovery” on page 23
- “Passwords” on page 24
- “Power management” on page 25

Restoring the factory contents by using OneKey Recovery

Restore of factory default

The Lenovo V310-14ISK/Lenovo V310-15ISK computers come with pre-installed OneKey Recovery System. In order to save application files and the initial backed up files of the system, the hard disk in a Lenovo computer includes a hidden partition when it is shipped. If you need to restore the system to the point of your first boot up, just enter Lenovo OneKey Recovery System and run **System Recovery**. For details of OneKey Recovery System, see *the User Guide for Lenovo OneKey Recovery System*.

Note: This will delete all the new data on the system partition (C drive), which is not recoverable. Make sure to back up your critical data before you perform this action.

Passwords

As many as three passwords may be needed for any Lenovo computer: the power-on password (POP), the hard disk password (HDP), and the administrator password.

If any of these passwords has been set, a prompt for it appears on the screen whenever the computer is turned on. The computer does not start until the password is entered.

Power-on password

A power-on password (POP) protects the system from being powered on by an unauthorized person. The password must be entered before an operating system can be booted.

Hard-disk password

There are two hard-disk passwords (HDPs):

+ User HDP - for the user

+ Master HDP - for the system administrator, who can use it to get access to the hard disk drive even if the user has changed the user HDP

Attention: If the user HDP has been forgotten, check whether a master HDP has been set. If it has, it can be used for access to the hard disk drive. If no master HDP is available, neither Lenovo nor Lenovo authorized service technicians provide any services to reset either the user or the master HDP, or to recover data from the hard disk drive. The hard disk drive can be replaced for a scheduled fee.

Administrator password

Administrator password controls the access of the whole setup utility. Only Administrator password was set then User password can be set. If Administrator password was cleared, the User password was cleared too.

Power management

Note: Power management modes are not supported for APM operating system. When you have finished working with your computer, you can set it to shut down, sleep or hibernate.

Putting the computer to sleep or shutting it down

When you have finished working with your computer, you can put it to sleep or shut it down.

Putting your computer to sleep

If you will be away from your computer for only a short time, put the computer to sleep. When the computer is in sleep mode, you can quickly wake it to resume use, bypassing the startup process.

To put the computer to sleep, do one of the following:

- Close the display lid.
- Press the Power button.
- Do the proper operations in the operating system.

Windows 7:

Click **Start**  → **Sleep**.

Windows 10:

Open the start menu, and then select **Power**  → **Sleep**.

Attention: Wait until the power indicator light starts blinking (indicating that the computer is in sleep mode) before you move your computer. Moving your computer while the hard disk is spinning can damage the hard disk, causing loss of data.

To wake the computer, do one of the following:

- Press any key on the keyboard.
- Press the Power button.

Shutting down the computer


If you are not going to use your computer for a long time, shut it down.

To shut down the computer, do one of the following:

• **Windows 7:**

Click **Start**  → **Shut down**

• **Windows 10:**

- Open the start menu, and then select **Power**  → **Shut down**.
- Right-click the **Start** button in the lower-left corner and select **Shut down or sign out** → **Shut down**.

Lenovo V310-14ISK/Lenovo V310-15ISK

This chapter presents the following product-specific service references and product-specific parts information:

- “Specifications” on page 26
- “Status indicators” on page 28
- “Fn key combinations/Hotkeys” on page 29
- “FRU replacement notices” on page 30
- “Removing and replacing an FRU” on page 31
- “Locations” on page 71
- “Parts list” on page 75

Specifications

The following table lists the specifications of the Lenovo V310-14ISK/Lenovo V310-15ISK:

Table 1. Specifications

Feature	Description
Processor	See the system properties of your computer. You can do this as follows: <ul style="list-style-type: none"> • Windows 10: Click Start, right-click File Explorer, and then click Properties. • Windows 7: Click Start, right-click Computer; then from the pull down menu select Properties.
Bus architecture	<ul style="list-style-type: none"> • 1866Mhz ~ 2133MT/s DDR4 SDRAM (Onboard*4pcs + SO-DIMM*1) • PCI Express Gen2(5Gb/s)/Gen3(8Gb/s) • Serial ATA Gen3 (6Gb/s) • USB3.0 (5Gb/s) • USB2.0 (480Mb/s) • HDMI1.4 (1.65Gb/s) • eDP 1.3
Graphic memory chip	<ul style="list-style-type: none"> • Integrated Graphics: Depends on CPU • Discrete Graphics: Switchable with Integrated graphics, AMD R16M-M1-30 (18W small package)/AMD R16M-M2-50 (25W small package) (design reserve)
Display	<ul style="list-style-type: none"> • 14.0" 16:9, 1,366 × 768 pixels HD / 1,920 × 1,080 pixels FHD • 15.6" 16:9, 1,366 × 768 pixels HD / 1,920 × 1,080 pixels FHD
Standard memory	<ul style="list-style-type: none"> • DDR4-2133 MHz, SODIMM × 1, (max: 4 GB (on board) + 4 GB (on select models))
CMOS RAM	<ul style="list-style-type: none"> • 16Mbyte (BIOS+EC)
Storage devices	<ul style="list-style-type: none"> • HDD: 2.5-inch, 9.5 mm / 7 mm, SATA 3 (SATA 2 compatible) • SSD: 2280, NGFF (m.2), SATA 3 (PCIe compatible)
Optical drive (on select models)	<ul style="list-style-type: none"> • 9.0 mm, Rambo

Table 1. Specifications (continued)




Feature	Description
I/O port	<ul style="list-style-type: none"> • USB 2.0 × 1, USB 3.0 × 2 • Combo audio jack × 1 • VGA × 1 • HDMI port × 1 • RJ-45 × 1 (1000 Mbps) • Memory card slot (SD/SDHC/SDXC/MMC)
Audio	<ul style="list-style-type: none"> • 1/8" Combo audio jack • 1.5 W speaker × 2 • Digital microphone, combo with camera (on select models)
Ethernet	<ul style="list-style-type: none"> • 1000 Mbps
Bluetooth wireless	<ul style="list-style-type: none"> • Combined in combo card
Keyboard	<ul style="list-style-type: none"> • 6 rows Lenovo Keyboard
Touchpad	<ul style="list-style-type: none"> • Multi-touch touchpad
Fingerprint Reader	<ul style="list-style-type: none"> • Optional
Integrated camera	<ul style="list-style-type: none"> • 720p / 0.3 M (on select models)
Battery	<ul style="list-style-type: none"> • Li-ion battery pack • Base battery: 4 Cells, 32 Wh / 41 Wh • Removable battery (on select models): 2 Cells, 35 Wh
AC adapter	<ul style="list-style-type: none"> • 20 V, DIS 65 W, UMA 45 W
Pre-installed operating system	<ul style="list-style-type: none"> • DOS • Win7 Pro 64bit • Win7 Home Basic 64bit (for PRC only) • Win10 Home 64bit/Win10 Pro 64bit/Win10 Pro Downgrade to Win7 Pro 64bit


Status indicators

The system status indicators below show the computer status:



Table 2. Status indicators

Indicator	Indicator status	Charge status	Meaning
1  Battery status indicator	On (solid green)	Charging	The battery has more than 80% charge.
	On (solid green)	Discharging	The battery has more than 20% charge.
	On (solid amber)	Discharging	The battery has between 5% and 20% charge.
	Blinking slowly (green)	Charging	The battery has between 20% and 80% charge. When the battery reaches 80% charge, the light will stop blinking. However, charging will continue until the battery is fully charged.
	Blinking slowly (amber)	Charging	The battery has less than 20% charge. When the battery charge reaches 20%, the blinking color will change to green.
1  Battery status indicator	Blinking quickly (amber)	Charging/Discharging	The battery has less than 5% charge.
2  Hard disk drive	Blinking	---	The hard disk drive is reading or writing data.

3  Power status indicator	On (green)	---	Connect the AC power adapter to the computer.
	Off	---	Disconnect the AC power adapter from the computer.

Fn key combinations/Hotkeys













The following table shows the function of each combination of Fn with a function key.

Table 3. Fn key combinations

Fn + B:	Activates the break function.
Fn + P:	Activates the pause function.
Fn + C:	Enables/disables the scroll lock.
Fn + S:	Activates the system request.
Fn + ↑:	Activates the Pgup key function.
Fn + ↓:	Activates the Pgdn key function.
Fn + ←:	Activates the home key function.
Fn + →:	Activates the end key function.

You can access certain system settings quickly by pressing the appropriate hotkeys.

Table 4. Hotkeys

 : Mutes/unmutes the sound.	 : Enables/disables Airplane mode.
 : Decreases the volume level.	 : Enables/disables the integrated camera.
 : Increases the volume level.	 : Locks the screen.
 : Enables/disables the microphone.	 : Toggles the display between the computer and an external device.
 : Refreshes the desktop or the currently active window.	 : Decreases the display brightness.
 : Enables/disables the touchpad.	 : Increases the display brightness.

FRU replacement notices

This section presents notices related to removing and replacing parts. Read this section carefully before replacing any FRU.

Screw notices

Loose screws can cause a reliability problem. In the Lenovo computer, this problem is addressed with special nylon-coated screws that have the following characteristics:

- They maintain tight connections.
- They do not easily come loose, even with shock or vibration.
- They are harder to tighten.

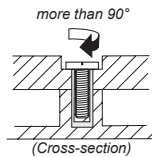
Do the following when you service this machine:

- Keep the screw kit in your tool bag.
- Carefully remove screws for reuse when replacing FRUs.
- Use a torque screwdriver if you have one.

Tighten screws as follows:

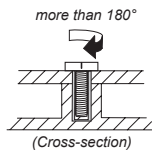
- **Plastic to plastic**

Turn an additional 90° after the screw head touches the surface of the plastic part:



- **Logic card to plastic**

Turn an additional 180° after the screw head touches the surface of the logic card:



- **Torque driver**

If you have a torque screwdriver, refer to the "Torque" column for each step.

- Make sure that you use the correct screws. If you have a torque screwdriver, tighten all screws firmly to the torque shown in the table. **Carefully remove screws for reuse when replacing FRUs. Make sure that all screws are tightened firmly.**
- Ensure torque screwdrivers are calibrated correctly following country specifications.

Removing and replacing an FRU

This section presents exploded figures with the instructions to indicate how to remove and replace the FRU. Make sure to observe the following general rules:

1. Do not attempt to service any computer unless you have been trained and certified. An untrained person runs the risk of damaging parts.
2. Before replacing any FRU, review “FRU replacement notices” on page 30.
3. Begin by removing any FRUs that have to be removed before the failing FRU. Any of such FRUs are listed at the top of the page. Remove them in the order in which they are listed.
4. Follow the correct sequence in the steps to remove the FRU, as given in the figures by the numbers in square callouts.
5. When turning a screw to replace an FRU, turn it in the direction as given by the arrow in the figure.
6. When removing the FRU, move it in the direction as given by the arrow in the figure.
7. To put the new FRU in place, reverse the removal procedures and follow any of the notes that pertain to replacement. For information about connecting and arranging internal cables, see “Locations” on page 71.
8. When replacing an FRU, use the correct screw as shown in the procedures.

DANGER

Before removing any FRU, turn off the computer, unplug all power cords from electrical outlets, remove the battery pack, and then disconnect any of the interconnecting cables.

Attention: After replacing an FRU, do not turn on the computer until you have made sure that all screws, springs, and other small parts are in place and none are loose inside the computer. Verify this by shaking the computer gently and listening for rattling sounds. Metallic parts or metal flakes can cause electrical short circuits.

Attention: The system board is sensitive to, and can be damaged by, electrostatic discharge. Before touching it, establish personal grounding by touching a ground point with one hand or using an electrostatic discharge (ESD) strap (P/N 6405959) to remove potential shock reasons.

Notes:

- This manual applies to the following models: Lenovo V310-14ISK/
Lenovo V310-15ISK.
- The illustrations used in this manual are for Lenovo V310-15ISK unless otherwise stated.

1010 Removable module (on select models)

Attention:

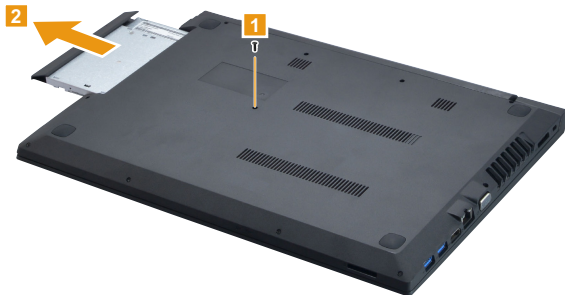
To protect your HDD, please do not swap between ODD and 2nd battery when system is running.

Figure 1. Removal steps of removable module (on select models)

Note: Some models are supplied with an optical disk drive or a removable battery as an optional module. For example purposes, this section describes the replacement of the optical disk drive module.

Supplied with an optical disk drive Or a removable battery

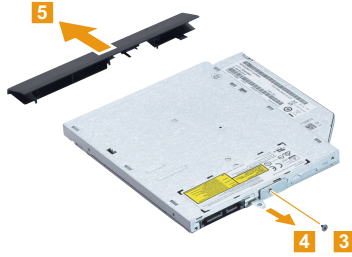
Remove the screw **1**, then gently pull the optical drive out in the direction shown by arrow **2**.



Step	Screw (quantity)	Color	Torque
1	M2 × 5.5 mm, Phillips head, nylok-coated (1) D cover → C cover	Black	1.85±0.15 kg*cm

Figure 1. Removal steps of removable module (on select models) (continued)

Remove the screw **3**, then carefully remove the removable module bracket and bezel in the directions shown by arrows **4** and **5**.

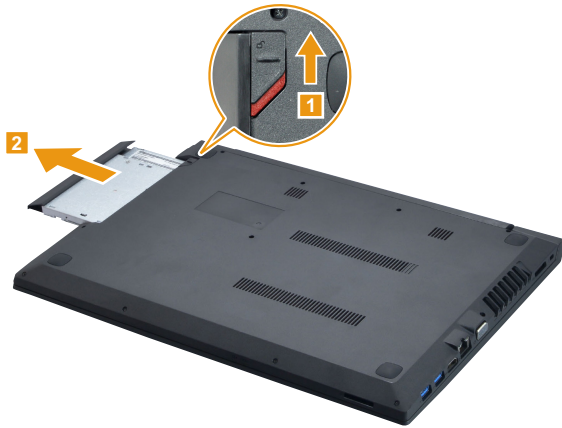


Step	Screw (quantity)	Color	Torque
3	M2 × 2.5 mm, Phillips head, nylok-coated (1) ODD BKT → ODD	Black	1.85±0.15 kg*cm

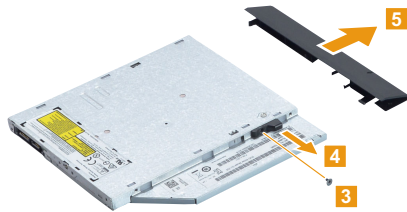
Figure 1. Removal steps of removable module (on select models) (continued)

Supplied with an optical disk drive and a removable battery

Hold the spring-loaded latch in the unlocked position **1**. Gently pull the removable module out **2**.



Remove the screw **3**, then carefully remove the removable module latch catch and bezel in the directions shown by arrows **4** and **5**.



Step	Screw (quantity)	Color	Torque
3	M2 × 2.5 mm, Phillips head, nylok-coated (1) ODD BKT → ODD	Black	1.85±0.15 kgf*cm

1020 Base cover

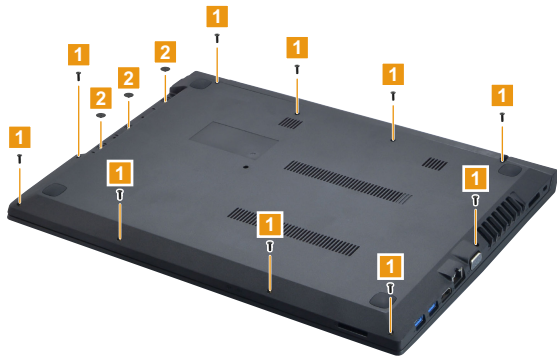
For access, remove this FRU:

- “1010 Removable module (on select models)” on page 32

Figure 2. Removal steps of base cover

Supplied with an optical disk drive Or a removable battery

Remove the screws **1** and **2** from the bottom.



Step	Screw (quantity)	Color	Torque
1	M2 × 5.5 mm, Phillips head, nylok-coated (10) D cover → C cover	Black	1.85±0.15 kg*cm
2	M2 × 1.5 mm, Phillips head, nylok-coated (3) D cover → C cover (ODD location)	Black	1.85±0.15 kg*cm

Figure 2. Removal steps of base cover (continued)

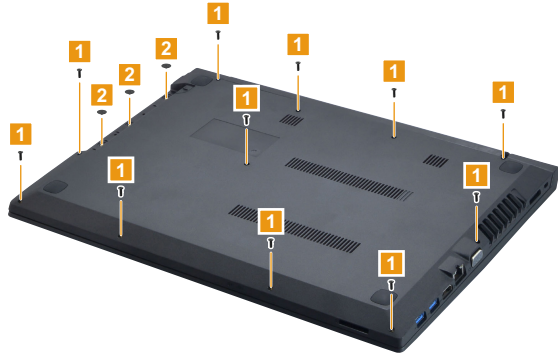
Use a plastic prying tool to aid in separation, then remove the base cover in the direction shown by arrow **3**.



Figure 2. Removal steps of base cover (continued)

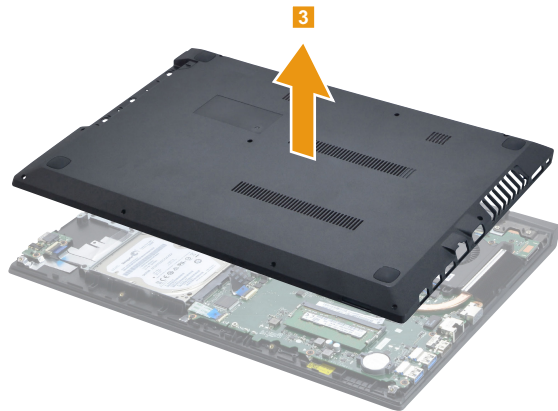
Supplied with an optical disk drive and a removable battery

Remove the screws **1** and **2** from the bottom.



Step	Screw (quantity)	Color	Torque
1	M2 × 5.5 mm, Phillips head, nylok-coated (11) D cover → C cover	Black	1.85±0.15 kgf*cm
2	M2 × 1.5 mm, Phillips head, nylok-coated (3) D cover → C cover (ODD location)	Black	1.85±0.15 kgf*cm

Use a plastic prying tool to aid in separation, then remove the base cover in the direction shown by arrow **3**.



Note: Applying labels to the base cover

The new base cover FRU is shipped with a kit containing labels of several kinds. When you replace the base cover, you need to apply the following labels:

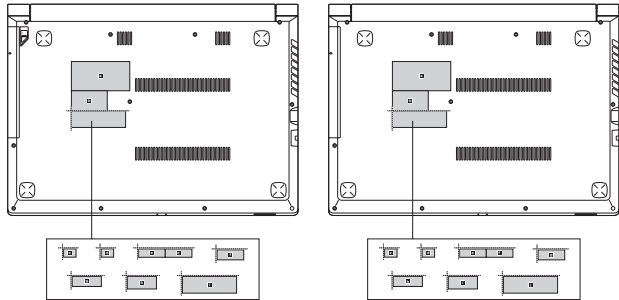
The following labels need to be peeled off from the old base cover, and need to be put on the new base cover.

- | | | | |
|----------|----------------------|----------|------------------------|
| a | Rating label | f | Indonesia rating label |
| b | Rating print label | g | Israel label |
| c | Malaysia label | h | KCC label |
| d | SIRIM label | i | Brazil label |
| e | Wlan Indonesia label | j | ARG label |

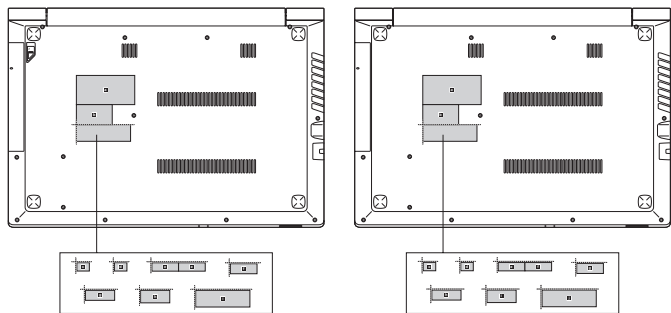
For some models, you also need to apply one or two FCC labels. Check the old base cover; if it has one or two FCC labels, find duplicates of them in the label kit and apply them to the new base cover.

For the location of each label, refer to the following figures:

Lenovo V310-14ISK



Lenovo V310-15ISK



1030 Battery pack

For access, remove these FRUs in order:

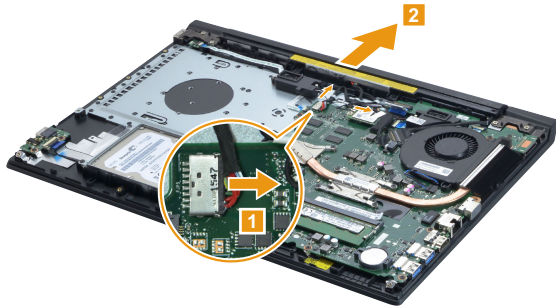
- “1010 Removable module (on select models)” on page 32
- “1020 Base cover” on page 35

⚠ DANGER

Only use the battery specified in the parts list for your computer. Any other battery could ignite or explode.

Figure 3. Removal steps of battery pack

Detach the battery pack connector in the direction shown by arrow **1**. Remove the battery pack in the direction shown by arrow **2**.



When installing: Make sure that the battery connector is attached firmly and route the cable along the cable guides.

1040 Hard disk drive

For access, remove these FRUs in order:

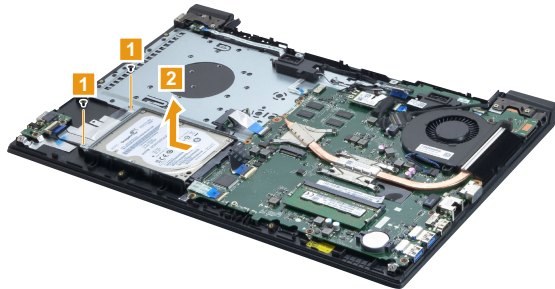
- “1010 Removable module (on select models)” on page 32
- “1020 Base cover” on page 35
- “1030 Battery pack” on page 39

Attention:

- **Do not drop the hard disk drive or apply any physical shock to it.** The hard disk drive is sensitive to physical shock. Improper handling can cause damage and permanent loss of data.
- Before removing the drive, suggest the customer to backup all the information on it if possible.
- Never remove the drive while the system is operating or is in suspend mode.

Figure 4. Removal steps of hard disk drive

Remove the screws **1**, then remove the hard disk drive in the direction shown by arrow **2**.



Step	Screw (quantity)	Color	Torque
1	M2 × 3 mm, Phillips head, nylok-coated (2) HDD ASSY → C cover	Black	1.85±0.15 kgf*cm

Figure 4. Removal steps of hard disk drive (continued)

Remove the screws **3**, and then take out the metal frame.



Step	Screw (quantity)	Color	Torque
3	M3 × 3 mm, Phillips head, nylok-coated (4) HDD → HDD bracket	Silver	3.0±0.3 kgf*cm

1050 PCI Express Mini Card for wireless LAN

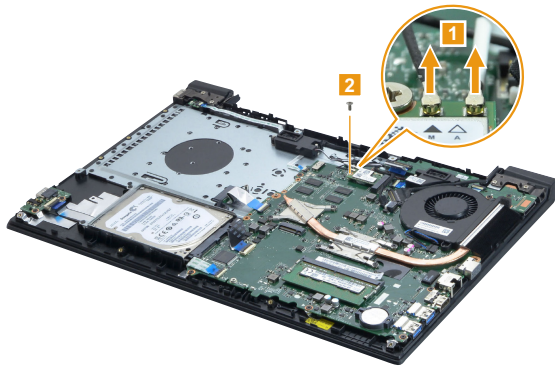
For access, remove these FRUs in order:

- “1010 Removable module (on select models)” on page 32
- “1020 Base cover” on page 35
- “1030 Battery pack” on page 39

Important: The preinstalled WLAN module may only be replaced with a Lenovo approved module in order to comply with FCC and IC regulations. Refer to “Table 5. Parts list—Overall” on page 78 for Lenovo part numbers for the approved modules.

Figure 5. Removal steps of PCI Express Mini Card for wireless LAN

Disconnect the two wireless LAN cables (black, white) **1**, and then remove the screw **2**.



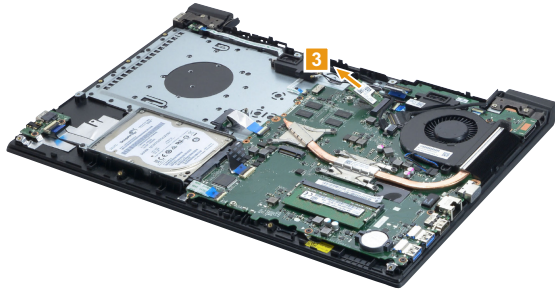
In step **1**, unplug the jacks by using the removal tool antenna RF connector (P/N: 08K7159), or pick up the connectors with your fingers and gently unplug them in the direction shown by the arrows.

Notes: The wireless LAN card has 2 cables in step **1**.
The wireless LAN card in some models might have 3 cables in step **1**.

Step	Screw (quantity)	Color	Torque
2	M2 × 3.5 mm, Phillips head, nylok-coated (1) Mini PCI → C cover	Silver	1.85±0.15 kgf*cm

Figure 5. Removal steps of PCI Express Mini Card for wireless LAN (continued)

Remove the card in the direction shown by arrow **3**.



When installing:

- In models with a wireless LAN card that has two antenna connectors, plug the black cable (1st) (MAIN) into the jack labeled **MAIN**, and the white cable (2nd) (AUX) into the jack labeled **AUX** on the card.
- In models with a wireless LAN card that has three antenna connectors, plug the black cable (1st) (MAIN) into the jack labeled **1**, the grey cable (3rd) into the jack labeled **3**, and the white cable (2nd) (AUX) into the jack labeled **2** on the card.

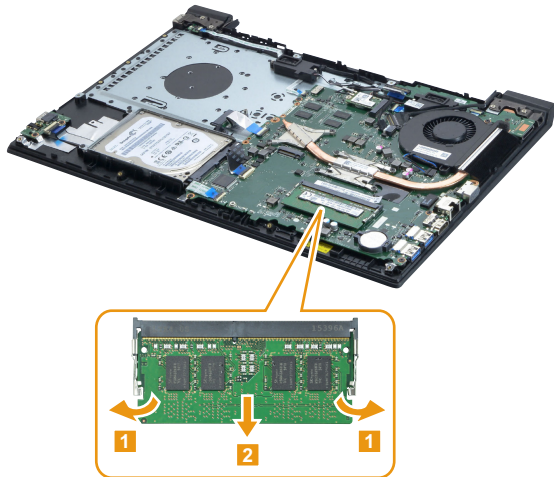
1060 DIMM

For access, remove these FRUs in order:

- “1010 Removable module (on select models)” on page 32
- “1020 Base cover” on page 35
- “1030 Battery pack” on page 39

Figure 6. Removal steps of DIMM

Release the two latches on both edges of the socket at the same time in the directions shown by arrows **1**, and then unplug the DIMM in the direction shown by arrow **2**.



When installing: Insert the notched end of the DIMM into the socket. Push the DIMM firmly, and pivot it until it snaps into place. Make sure that it is firmly fixed in the slot and is difficult to move.

Note: When replacing the memory is completed, you need to restart the computer after the first reboot.

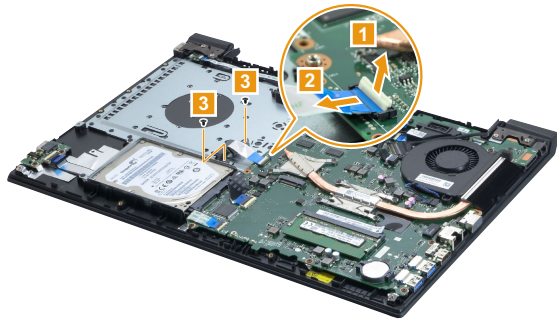
1070 ODD Board and 2nd battery board (Lenovo V310-15ISK)

For access, remove these FRUs in order:

- “1010 Removable module (on select models)” on page 32
- “1020 Base cover” on page 35
- “1030 Battery pack” on page 39

Figure 7. Removal steps of ODD Board and 2nd battery board (Lenovo V310-15ISK)

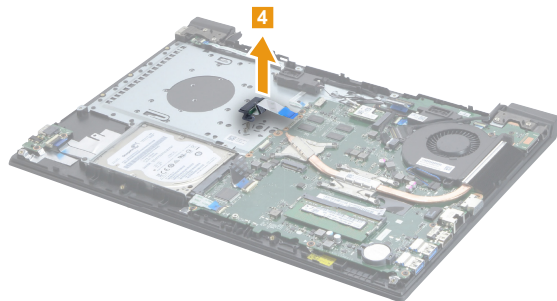
Detach the ODD board connector in the directions shown by arrows **1** and **2**. Remove the screws **3**.



Step	Screw (quantity)	Color	Torque
3	M2 × 3 mm, Phillips head, nylok-coated (2) ODD convert BD → C cover	Black	1.85±0.15 kgf*cm

When installing: Make sure that the connector is attached firmly.

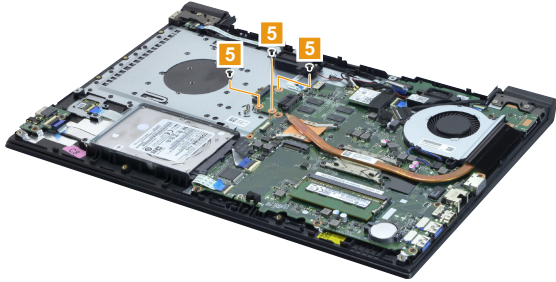
Remove the ODD board **4**.



// Lenovo V310-14ISK/Lenovo V310-15ISK Hardware Maintenance Manual

Figure 7. Removal steps of ODD Board and 2nd battery board (Lenovo V310-15ISK) (continued)

Remove the screws **5**.



Step	Screw (quantity)	Color	Torque
5	M2 × 3 mm, Phillips head, nylok-coated (3) 2nd battery convert BD → C cover	Black	1.85±0.15 kgf*cm

Remove the 2nd battery board **6**.



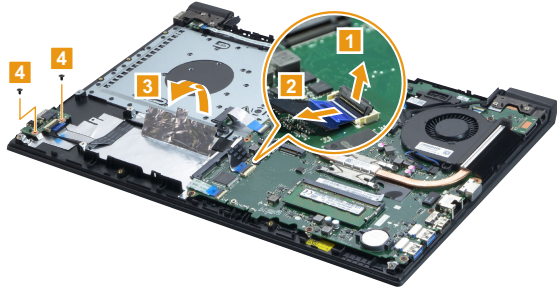
1080 USB board and fingerprint reader module

For access, remove these FRUs in order:

- “1010 Removable module (on select models)” on page 32
- “1020 Base cover” on page 35
- “1030 Battery pack” on page 39
- “1040 Hard disk drive” on page 40

Figure 8. Removal steps of USB Board and fingerprint reader module

Detach the USB board connector in the directions shown by arrows **1** and **2**. Peel off the foil stuck on the USB board cable **3**. Remove the screws **4**.



Step	Screw (quantity)	Color	Torque
4	M2 × 3 mm, Phillips head, nylok-coated (2) USB BD → C cover	Black	1.85±0.15 kgf*cm

Remove the ODD board **5**.

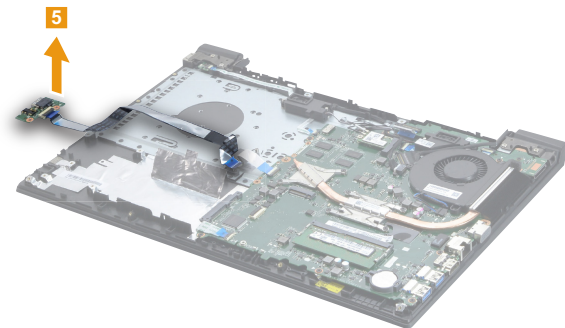


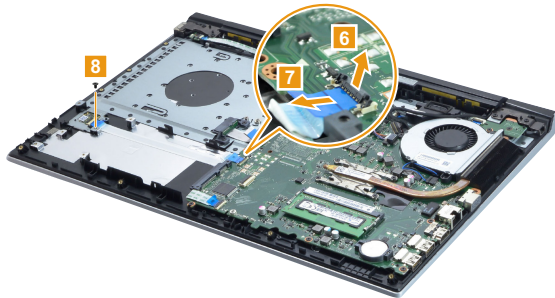
Figure 8. Removal steps of USB Board and fingerprint reader module (continued)

Detach the fingerprint reader connector in the directions shown by arrows **6** and **7**. Remove the screws **8**.

Lenovo V310-14ISK



Lenovo V310-15ISK

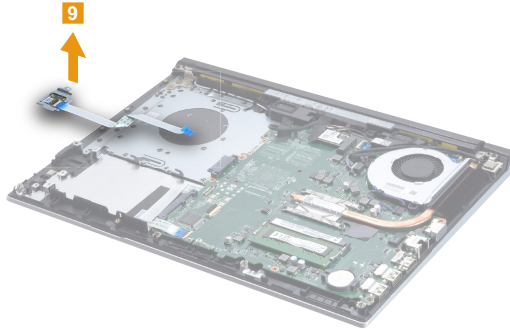


Step	Screw (quantity)	Color	Torque
8	M2 × 3 mm, Phillips head, nylok-coated (1) FP BD → C cover	Black	1.85±0.15 kgf*cm

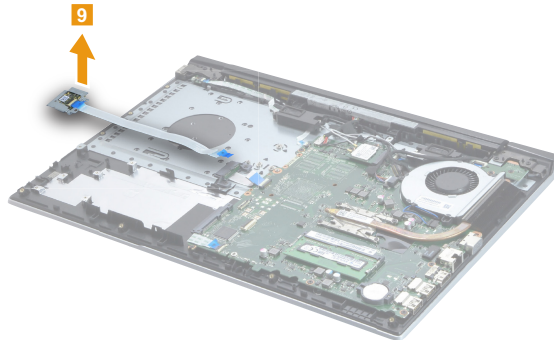
Figure 8. Removal steps of USB Board and fingerprint reader module (continued)

Remove the fingerprint reader module 9.

Lenovo V310-14ISK



Lenovo V310-15ISK



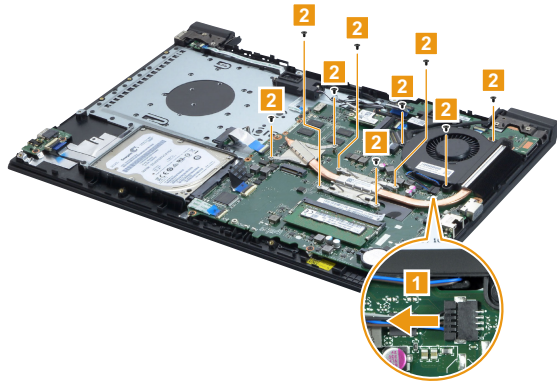
1090 Fan and heat sink assembly

For access, remove these FRUs in order:

- “1010 Removable module (on select models)” on page 32
- “1020 Base cover” on page 35
- “1030 Battery pack” on page 39
- “1040 Hard disk drive” on page 40
- “1050 PCI Express Mini Card for wireless LAN” on page 42
- “1070 ODD Board and 2nd battery board (Lenovo V310-15ISK)” on page 45
- “1080 USB board and fingerprint reader module” on page 47

Figure 9. Removal steps of heat sink assembly

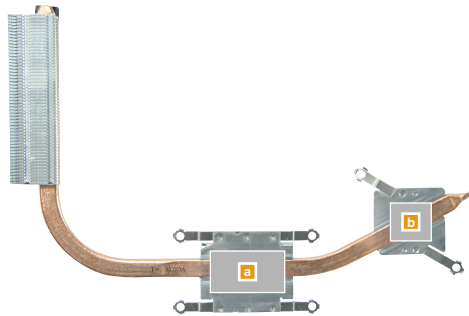
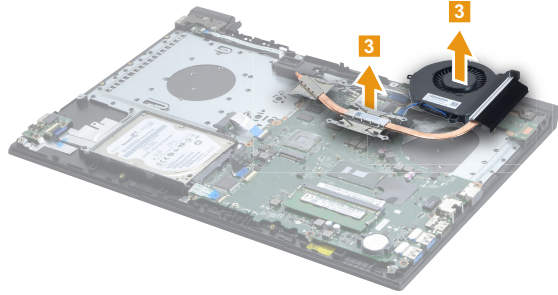
Unplug the fan connector in the direction shown by arrow **1**. Remove the screws **2**.



Step	Screw (quantity)	Color	Torque
2	M2 × 3 mm, Phillips head, nylok-coated (9) Fan and heat sink → MB	Black	1.85±0.15 kgf*cm

Figure 9. Removal steps of heat sink assembly

Lift the fan and the heat sink in the direction shown by arrows **3**.



When installing:

Before you attach the fan assembly to the computer, apply thermal grease, at an amount of 0.2 grams, to the **a** and **b** part shown in the figure above. Either too much or too little grease application can cause a thermal problem due to imperfect contact with a component.

1100 System board

Important notices for handling the system board:

When handling the system board, bear the following in mind.

- Be careful not to drop the system board on a bench top that has a hard surface, such as metal, wood, or composite.
- Avoid rough handling of any kind.
- In the whole process, make sure not to drop or stack the system board.
- If you put a system board down, make sure to put it only on a padded surface such as an ESD mat or conductive corrugated material.

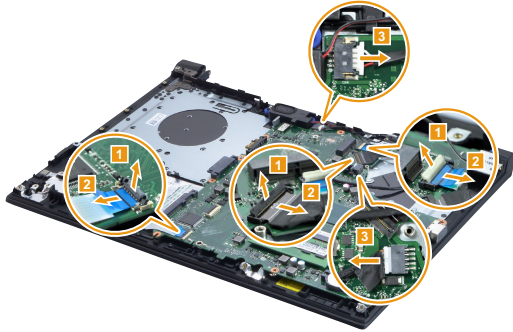
For access, remove these FRUs in order:

- “1010 Removable module (on select models)” on page 32
- “1020 Base cover” on page 35
- “1030 Battery pack” on page 39
- “1040 Hard disk drive” on page 40
- “1050 PCI Express Mini Card for wireless LAN” on page 42
- “1070 ODD Board and 2nd battery board (Lenovo V310-15ISK)” on page 45
- “1080 USB board and fingerprint reader module” on page 47
- “1090 Fan and heat sink assembly” on page 50

Figure 10. Removal steps of system board (continued)

Detach the seven connectors in the directions shown by arrows **1**, **2** and **3**.

Lenovo V310-14ISK



Lenovo V310-15ISK

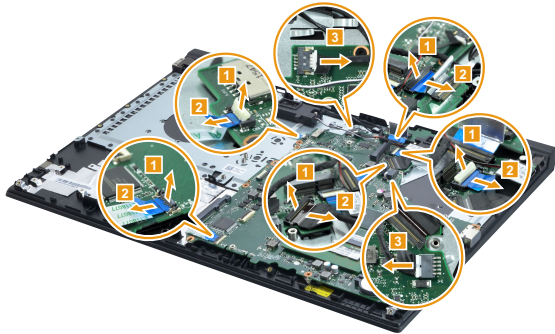
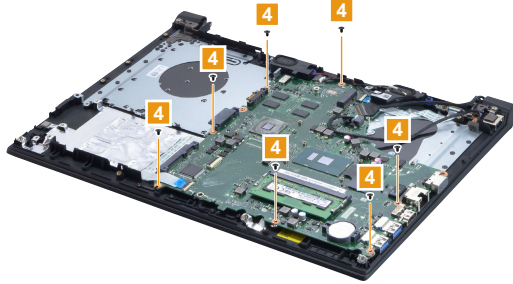


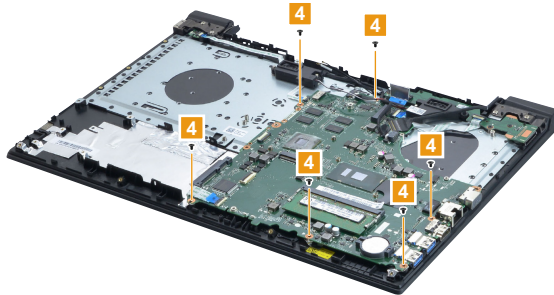
Figure 10. Removal steps of system board (continued)

Remove the screws 4.

Lenovo V310-14ISK



Lenovo V310-15ISK



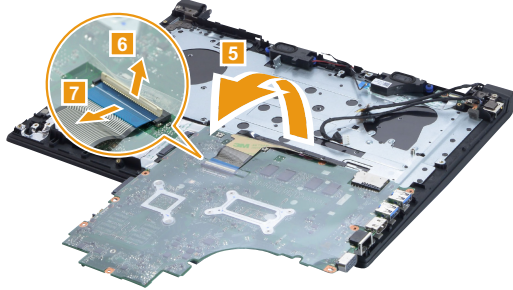
Step	Screw (quantity)	Color	Torque
4.	M2 × 3 mm, Phillips head, nylok-coated (7) (Lenovo V310-14ISK) MB → C cover	Black	1.85±0.15 kgf*cm
4.	M2 × 3.5 mm, Phillips head, nylok-coated (6) (Lenovo V310-15ISK) MB → C cover & DC-IN CONN → C cover	Black	1.85±0.15 kgf*cm

When installing: Make sure that the connectors are attached firmly.

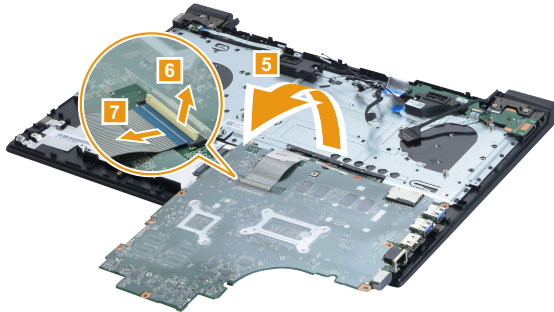
Figure 10. Removal steps of system board (continued)

Carefully turn the main board over **5**. Disconnect the keyboard connector in the directions shown by arrows **6** and **7**. Then remove the main board.

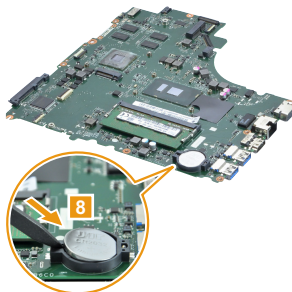
Lenovo V310-14ISK



Lenovo V310-15ISK



Remove the RTC battery with a prying tool **8**.



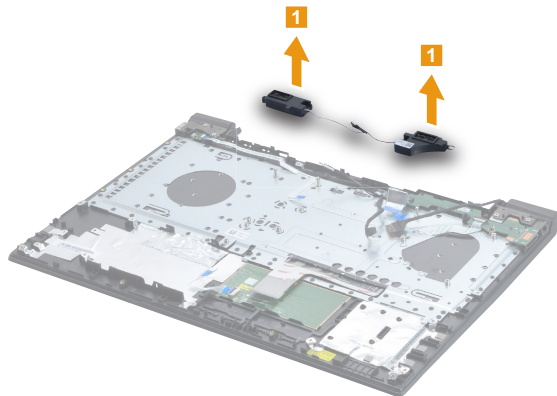
1110 Speaker

For access, remove these FRUs in order:

- “1010 Removable module (on select models)” on page 32
- “1020 Base cover” on page 35
- “1030 Battery pack” on page 39
- “1040 Hard disk drive” on page 40
- “1050 PCI Express Mini Card for wireless LAN” on page 42
- “1070 ODD Board and 2nd battery board (Lenovo V310-15ISK)” on page 45
- “1080 USB board and fingerprint reader module” on page 47
- “1090 Fan and heat sink assembly” on page 50
- “1100 System board” on page 52

Figure 11. Removal steps of speaker

Remove the speaker **1**.



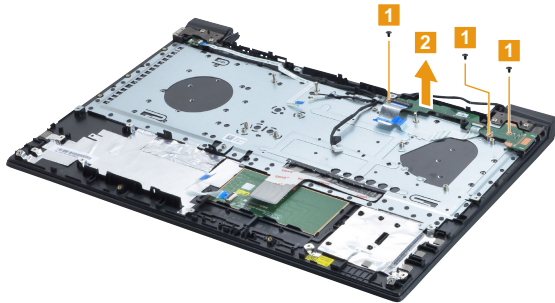
1120 Power board and LED board (Lenovo V310-15ISK)

For access, remove these FRUs in order:

- “1010 Removable module (on select models)” on page 32
- “1020 Base cover” on page 35
- “1030 Battery pack” on page 39
- “1040 Hard disk drive” on page 40
- “1050 PCI Express Mini Card for wireless LAN” on page 42
- “1070 ODD Board and 2nd battery board (Lenovo V310-15ISK)” on page 45
- “1080 USB board and fingerprint reader module” on page 47
- “1090 Fan and heat sink assembly” on page 50
- “1100 System board” on page 52
- “1110 Speaker” on page 56

Figure 12. Removal steps of power board and LED board

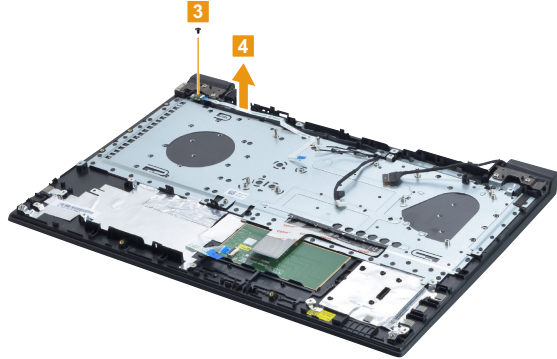
Remove the screws **1**, then remove the power board in the direction shown by arrow **2**.



Step	Screw (quantity)	Color	Torque
1	M2 × 3 mm, Phillips head, nylok-coated (3) power BD → C cover	Black	1.85±0.15 kgf*cm

Figure 12. Removal steps of power board and LED board (continued)

Remove the screws **3**, then remove the LED board in the direction shown by arrow **4**.



Step	Screw (quantity)	Color	Torque
3	M2 × 3 mm, Phillips head, nylok-coated (1) LED BD → C cover	Black	1.85±0.15 kgf*cm

1130 Upper case

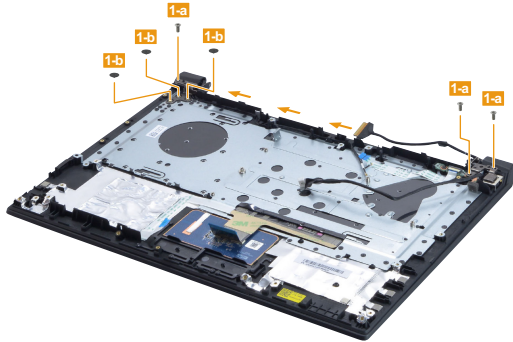
For access, remove these FRUs in order:

- “1010 Removable module (on select models)” on page 32
- “1020 Base cover” on page 35
- “1030 Battery pack” on page 39
- “1040 Hard disk drive” on page 40
- “1050 PCI Express Mini Card for wireless LAN” on page 42
- “1070 ODD Board and 2nd battery board (Lenovo V310-15ISK)” on page 45
- “1080 USB board and fingerprint reader module” on page 47
- “1090 Fan and heat sink assembly” on page 50
- “1100 System board” on page 52
- “1110 Speaker” on page 56
- “1120 Power board and LED board (Lenovo V310-15ISK)” on page 57

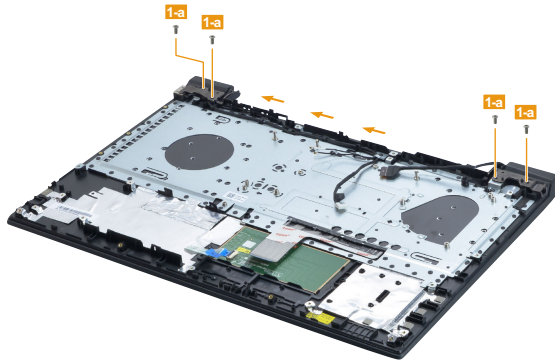
Figure 13. Removal steps of upper case

Remove the screws **1-a**, **1-b**. Release the LCD cable and antenna cables from the cable guides.

Lenovo V310-14ISK



Lenovo V310-15ISK

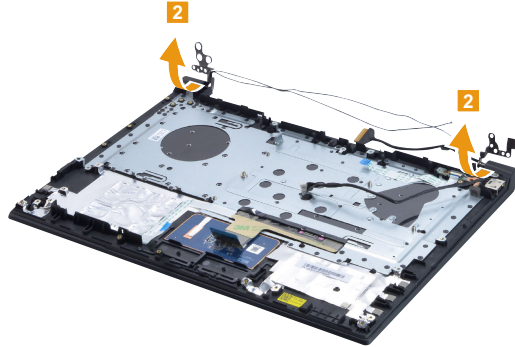


Step	Screw (quantity)	Color	Torque
1-a	M2.5 × 5 mm, Phillips head, nylok-coated (3) (Lenovo V310-14ISK) Hinge → C cover	Silver	3.0±0.3 kgf*cm
1-a	M2.5 × 5 mm, Phillips head, nylok-coated (4) (Lenovo V310-15ISK) Hinge → C cover	Silver	3.0±0.3 kgf*cm
1-b	M2 × 2 mm, Phillips head, nylok-coated (3) (Lenovo V310-14ISK) Hinge → C cover	Black	1.85±0.15 kgf*cm

Figure 13. Removal steps of upper case (continued)

Open the hinge in the direction shown by arrows **2**.

Lenovo V310-14ISK



Lenovo V310-15ISK

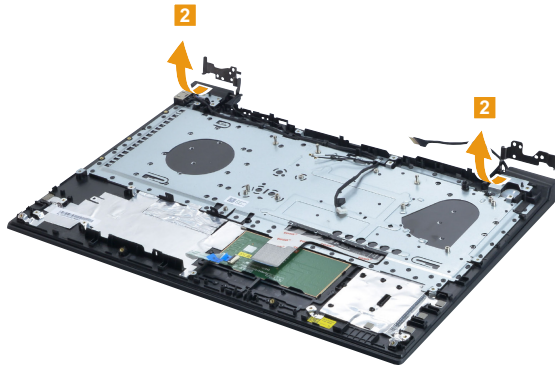
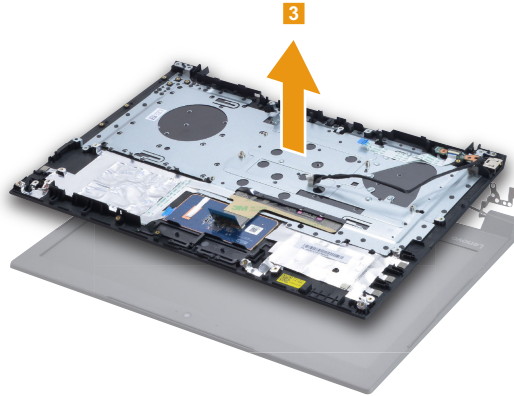


Figure 13. Removal steps of upper case (continued)

Remove the upper case from LCD unit in the direction shown by arrow **3**.

Lenovo V310-14ISK



Lenovo V310-15ISK

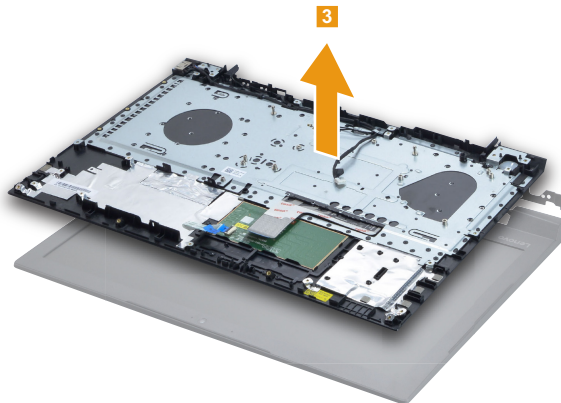
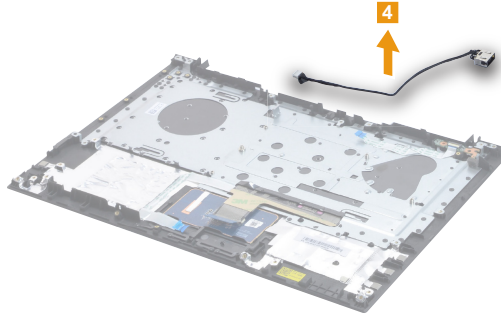


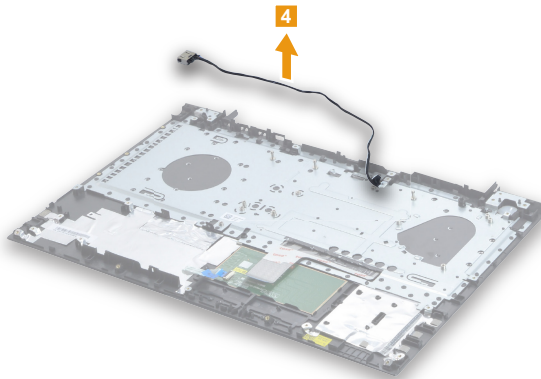
Figure 13. Removal steps of upper case (continued)

Remove the DC-in cable in the direction shown by arrow 4.

Lenovo V310-14ISK



Lenovo V310-15ISK



// Lenovo V310-14ISK/Lenovo V310-15ISK Hardware Maintenance Manual

Figure 13. Removal steps of upper case (continued)

Lenovo V310-14ISK: Remove the screw **5**, then remove the power board **6**.



Step	Screw (quantity)	Color	Torque
5	M2 × 3 mm, Phillips head, nylok-coated (1) (Lenovo V310-14ISK) power BD → C cover	Black	1.85±0.15 kg*cm

1140 LCD unit

For access, remove these FRUs in order:

- “1010 Removable module (on select models)” on page 32
- “1020 Base cover” on page 35
- “1030 Battery pack” on page 39
- “1040 Hard disk drive” on page 40
- “1050 PCI Express Mini Card for wireless LAN” on page 42
- “1070 ODD Board and 2nd battery board (Lenovo V310-15ISK)” on page 45
- “1080 USB board and fingerprint reader module” on page 47
- “1100 System board” on page 52

Figure 14. Removal steps of LCD unit

Remove the LCD front bezel in the direction shown by arrows **1**.

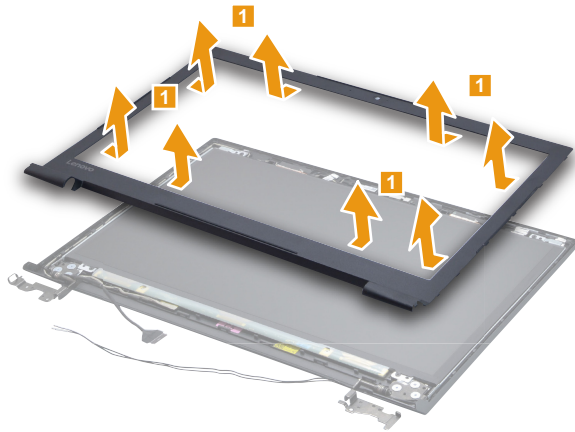
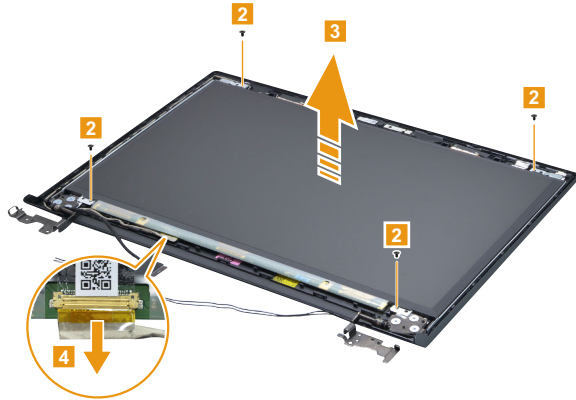


Figure 14. Removal steps of LCD unit (continued)

Remove the screws **2**. Lift the LCD panel slightly **3**. Peel off the adhesive tape and detach the connector in the direction shown by arrow **4**. Then remove the LCD panel.



Step	Screw (quantity)	Color	Torque
2	M2 × 3 mm, Phillips head, nylok-coated (4) Lcd Panel → A cover	Black	1.85±0.15 kg*cm

When installing: Make sure that the metal connector is attached firmly.

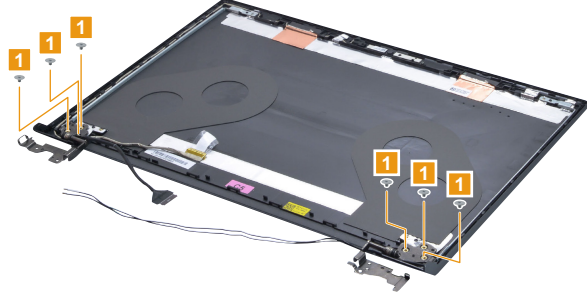
1150 LCD hinges

For access, remove these FRUs in order:

- “1010 Removable module (on select models)” on page 32
- “1020 Base cover” on page 35
- “1030 Battery pack” on page 39
- “1040 Hard disk drive” on page 40
- “1050 PCI Express Mini Card for wireless LAN” on page 42
- “1070 ODD Board and 2nd battery board (Lenovo V310-15ISK)” on page 45
- “1080 USB board and fingerprint reader module” on page 47
- “1090 Fan and heat sink assembly” on page 50
- “1100 System board” on page 52
- “1110 Speaker” on page 56
- “1120 Power board and LED board (Lenovo V310-15ISK)” on page 57
- “1130 Upper case” on page 59
- “1140 LCD unit” on page 65

Figure 15. Removal steps of LCD hinges

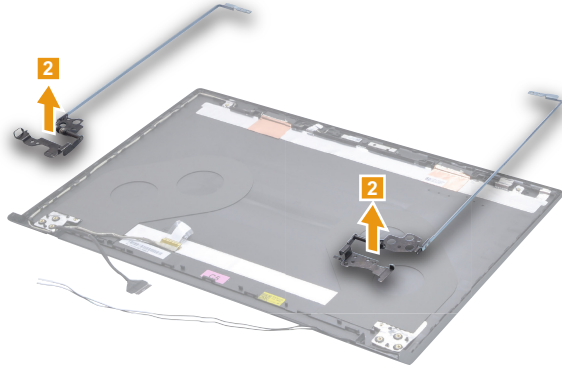
Remove the screws **1**.



Step	Screw (quantity)	Color	Torque
1	M2.5 × 3 mm, Phillips head, nylok-coated (6) Hinge → A cover	Silver	3.0±0.3 kgf*cm

Figure 15. Removal steps of LCD hinges (continued)

Release the two hinges in the direction shown by arrows **2**.



1160 EDP cable and integrated camera

For access, remove these FRUs in order:

- “1010 Removable module (on select models)” on page 32
- “1020 Base cover” on page 35
- “1030 Battery pack” on page 39
- “1040 Hard disk drive” on page 40
- “1050 PCI Express Mini Card for wireless LAN” on page 42
- “1070 ODD Board and 2nd battery board (Lenovo V310-15ISK)” on page 45
- “1080 USB board and fingerprint reader module” on page 47
- “1090 Fan and heat sink assembly” on page 50
- “1100 System board” on page 52
- “1110 Speaker” on page 56
- “1120 Power board and LED board (Lenovo V310-15ISK)” on page 57
- “1130 Upper case” on page 59
- “1140 LCD unit” on page 65
- “1150 LCD hinges” on page 67

Figure 16. Removal steps of EDP cable and integrated camera

Note: The integrated camera is stuck on the top center of the LCD cover.

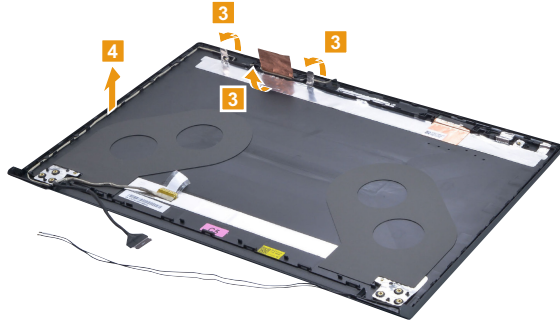
Detach the connector in the direction shown by arrow **1**, then remove the camera board in the direction shown by arrow **2**.



When installing: Stick the integrated camera to the top center of the LCD cover and adjust the placement of it to make sure the connector is attached firmly.

Figure 16. Removal steps of EDP cable and integrated camera (continued)

Peel off the foil and tape secure the EDP cable in the direction shown by arrows **3**.
Remove the EDP cable in the direction shown by arrows **4**.



Locations

Front and right-side view

- 1 Integrated camera (on select models)
 - 2 Built-in microphone
 - 3 Wireless LAN antennas
 - 4 Computer display
 - 5 Power button
 - 6 Touchpad
 - 7 Fingerprint reader (on select models)
 - 8 Novo button
 - 9 Combo audio jack
 - 10 USB port
 - 11 Kensington mini security slot
 - 12 Optional module (Optical disk drive/removable battery) (on select models)
 - 13 Power status indicator
- Note:** For the description of each indicator, see “Status indicators” on page 28.
- 14 AC power adapter jack

Lenovo V310-14ISK



Lenovo V310-15ISK



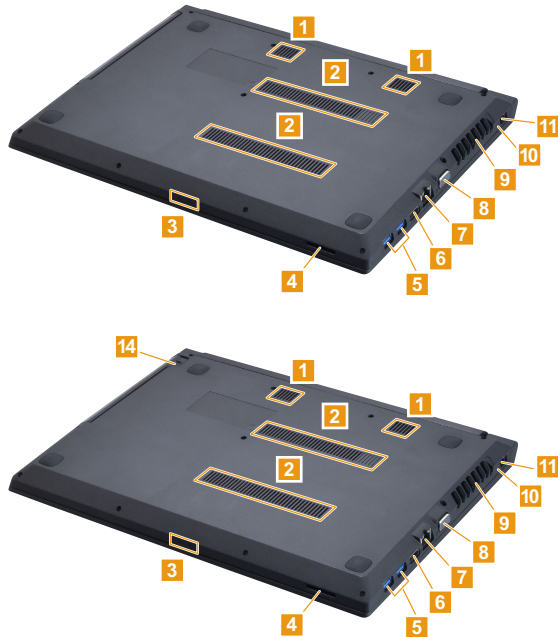
Bottom and left-side view

- 1 Speakers
- 2 Louvers
- 3 System status indicators
- 4 Memory card slot
- 5 USB ports
- 6 HDMI port
- 7 RJ-45 port
- 8 VGA port
- 9 Ventilation slots
- 10 Power status indicator

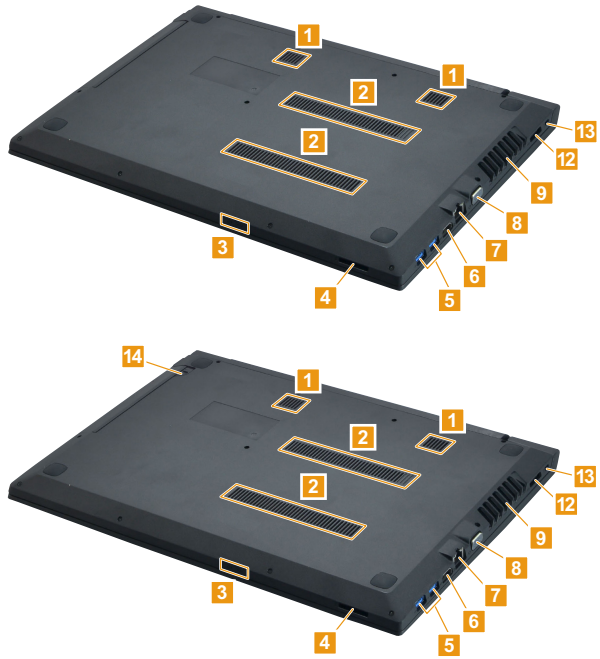
Note: For the description of each indicator, see “Status indicators” on page 28.

Note: For the description of each indicator, see “Status indicators” on page 28.

- 11 AC power adapter jack
- 12 Lenovo OneLink connector (on select models)
- 13 Kensington mini security slot
- 14 Optical disk drive/removable battery latch (on select models)



Lenovo V310-15ISK



Parts list

This section presents the following service parts:

- “Overall” on page 76
- “LCD FRUs” on page 93
- “Miscellaneous parts” on page 96
- “AC adapters” on page 96
- “Screws” on page 96

Note:

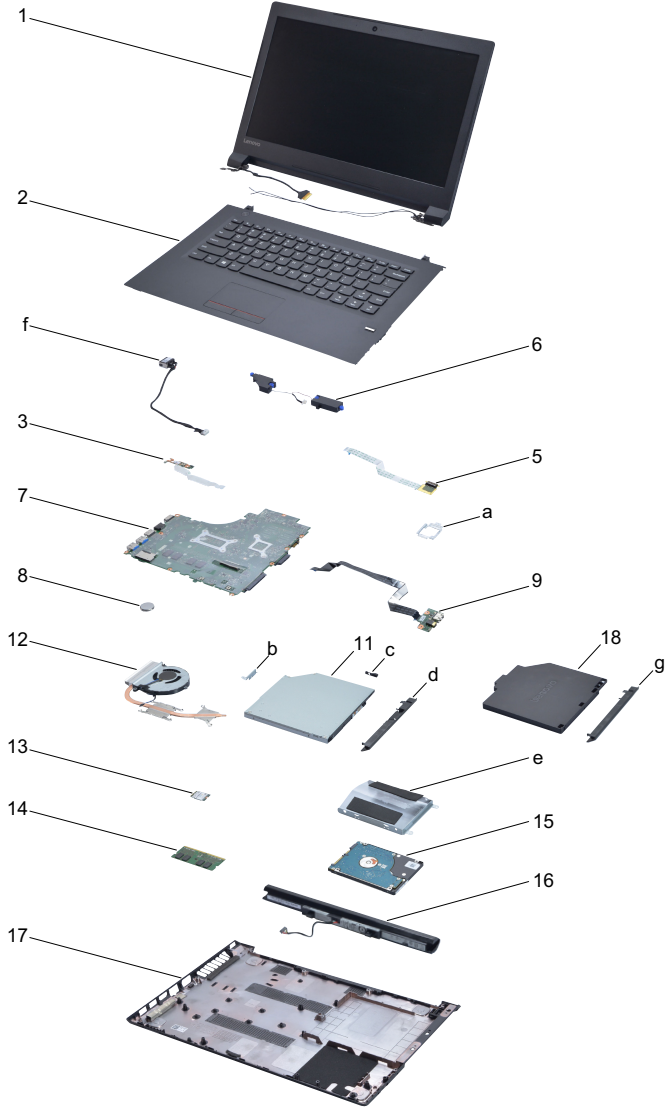
Each FRU is available for all types or models, unless specific types or models are specified.

Attention:

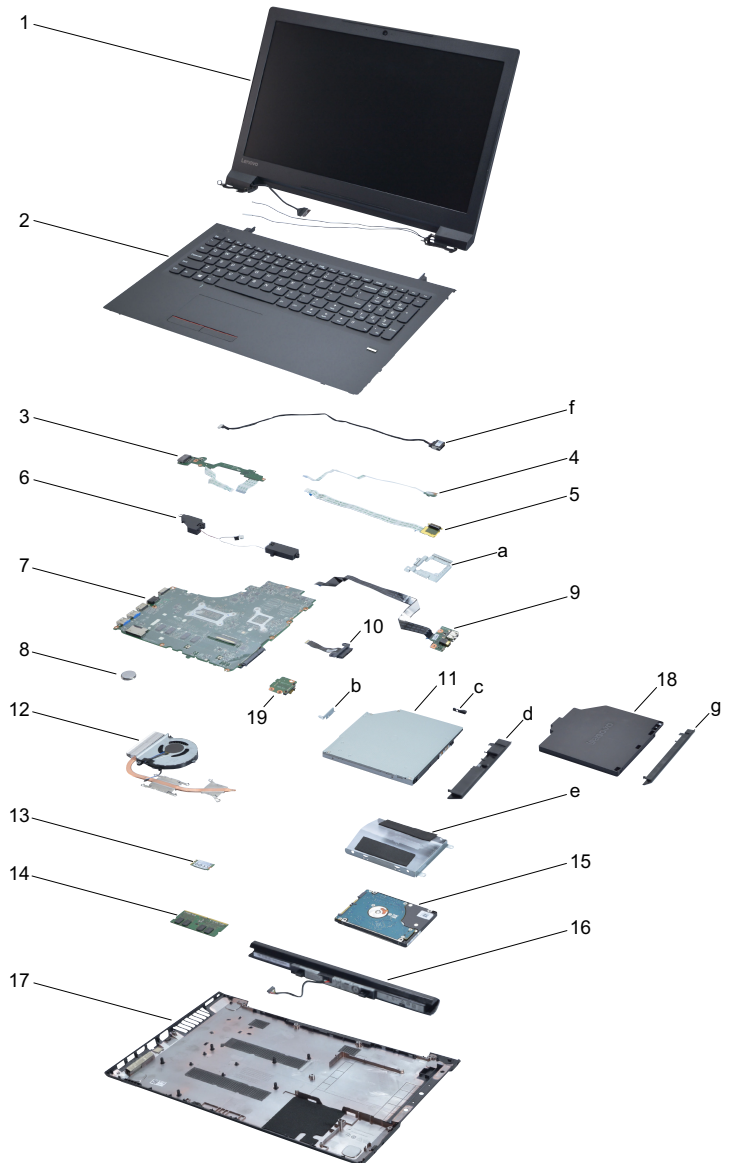
Do not attempt to replace an FRU on your own. If an FRU is damaged, contact a Lenovo authorized servicer or a marketing representative for replacement or repair. Only qualified technicians can inspect or repair this product.

Overall

Lenovo V310-14ISK



Lenovo V310-15ISK



Lenovo V310-14ISK/Lenovo V310-15ISK Hardware Maintenance Manual

Table 5. Parts list—Overall

No.	FRU	FRU no.	CRU ID.	Lenovo V310-14ISK	Lenovo V310-15ISK
a-g	See "Miscellaneous parts" on page 96.				
1	LCD unit (see "LCD FRUs" on page 93.)				
2	Upper Case Q 80SX FP W/KB US	5CB0L46648	N	•	
2	Upper Case Q 80SX NFP W/KB US	5CB0L46554	N	•	
2	Upper Case Q 80SX FP W/KB UK	5CB0L46597	N	•	
2	Upper Case Q 80SX NFP W/KB UK	5CB0L59436	N	•	
2	Upper Case Q 80SX FP W/KB JA	5CB0L59201	N	•	
2	Upper Case Q 80SX NFP W/KB JA	5CB0L46647	N	•	
2	Upper Case Q 80SX FP W/KB IT	5CB0L59525	N	•	
2	Upper Case Q 80SX NFP W/KB IT	5CB0L59218	N	•	
2	Upper Case Q 80SX FP W/KB SP	5CB0L59337	N	•	
2	Upper Case Q 80SX NFP W/KB SP	5CB0L59265	N	•	
2	Upper Case Q 80SX FP W/KB TR	5CB0L59454	N	•	
2	Upper Case Q 80SX NFP W/KB TR	5CB0L59479	N	•	
2	Upper Case Q 80SX FP W/KB TI	5CB0L59492	N	•	
2	Upper Case Q 80SX NFP W/KB TI	5CB0L59481	N	•	
2	Upper Case Q 80SX FP W/KB PO	5CB0L59190	N	•	
2	Upper Case Q 80SX NFP W/KB PO	5CB0L59358	N	•	
2	Upper Case Q 80SX FP W/KB LA	5CB0L59254	N	•	
2	Upper Case Q 80SX NFP W/KB LA	5CB0L59392	N	•	
2	Upper Case Q 80SX FP W/KB KO	5CB0L59513	N	•	
2	Upper Case Q 80SX NFP W/KB KO	5CB0L59181	N	•	
2	Upper Case Q 80SX FP W/KB CH	5CB0L59244	N	•	
2	Upper Case Q 80SX NFP W/KB CH	5CB0L59235	N	•	
2	Upper Case Q 80SX FP W/KB RU	5CB0L59359	N	•	
2	Upper Case Q 80SX NFP W/KB RU	5CB0L59517	N	•	
2	Upper Case Q 80SX FP W/KB FR	5CB0L59268	N	•	
2	Upper Case Q 80SX NFP W/KB FR	5CB0L59414	N	•	
2	Upper Case Q 80SX FP W/KB GR	5CB0L59200	N	•	
2	Upper Case Q 80SX NFP W/KB GR	5CB0L59533	N	•	
2	Upper Case Q 80SX FP W/KB AR-E	5CB0L59263	N	•	
2	Upper Case Q 80SX NFP W/KB AR-E	5CB0L59259	N	•	
2	Upper Case Q 80SX FP W/KB BZ	5CB0L59542	N	•	
2	Upper Case Q 80SX NFP W/KB BZ	5CB0L59531	N	•	
2	Upper Case Q 80SX FP W/KB NL	5CB0L59372	N	•	
2	Upper Case Q 80SX NFP W/KB NL	5CB0L59505	N	•	
2	Upper Case Q 80SX FP W/KB GK	5CB0L59298	N	•	
2	Upper Case Q 80SX NFP W/KB GK	5CB0L59179	N	•	
2	Upper Case Q 80SX FP W/KB HB	5CB0L59422	N	•	
2	Upper Case Q 80SX NFP W/KB HB	5CB0L59413	N	•	
2	Upper Case Q 80SX FP W/KB HG	5CB0L59305	N	•	
2	Upper Case Q 80SX NFP W/KB HG	5CB0L59443	N	•	
2	Upper Case Q 80SX FP W/KB ND	5CB0L59275	N	•	
2	Upper Case Q 80SX NFP W/KB ND	5CB0L59472	N	•	
2	Upper Case Q 80SX FP W/KB BE	5CB0L59390	N	•	
2	Upper Case Q 80SX NFP W/KB BE	5CB0L59409	N	•	
2	Upper Case Q 80SX FP W/KB ICE	5CB0L59245	N	•	
2	Upper Case Q 80SX NFP W/KB ICE	5CB0L59465	N	•	
2	Upper Case Q 80SX FP W/KB SA	5CB0L59317	N	•	

Table 5. Parts list—Overall (continued)

No.	FRU	FRU no.	CRU ID.	Lenovo V310-14ISK	Lenovo V310-15ISK
2	Upper Case Q 80SX NFP W/KB SA	5CB0L59172	N	●	
2	Upper Case Q 80SX FP W/KB SW	5CB0L59357	N	●	
2	Upper Case Q 80SX NFP W/KB SW	5CB0L59503	N	●	
2	Upper Case Q 80SX FP W/KB USINT'E	5CB0L59193	N	●	
2	Upper Case Q 80SX NFP W/KBUSINT'E	5CB0L59349	N	●	
2	Upper Case Q 80SX FP W/KB CZ-SK	5CB0L59221	N	●	
2	Upper Case Q 80SX NFP W/KB CZ-SK	5CB0L59247	N	●	
2	Upper Case Q 80SX FP W/KB BU	5CB0L59389	N	●	
2	Upper Case Q 80SX NFP W/KB BU	5CB0L59370	N	●	
2	Upper Case Q 80SX FP W/KB INDIA	5CB0L59439	N	●	
2	Upper Case Q 80SX NFP W/KB INDIA	5CB0L59269	N	●	
2	Upper Case Q 80SX FP W/KB FR-AR	5CB0L59286	N	●	
2	Upper Case Q 80SX NFP W/KB FR-AR	5CB0L59537	N	●	
2	Upper Case Q 80SY FP W/KB US	5CB0L46631	N		●
2	Upper Case Q 80SY NFP W/KB US	5CB0L46658	N		●
2	Upper Case Q 80SY FP W/KB JA	5CB0L59399	N		●
2	Upper Case Q 80SY NFP W/KB JA	5CB0L46761	N		●
2	Upper Case Q 80SY FP W/KB UK	5CB0L59523	N		●
2	Upper Case Q 80SY NFP W/KB UK	5CB0L59206	N		●
2	Upper Case Q 80SY FP W/KB IT	5CB0L59352	N		●
2	Upper Case Q 80SY NFP W/KB IT	5CB0L59421	N		●
2	Upper Case Q 80SY FP W/KB SP	5CB0L59425	N		●
2	Upper Case Q 80SY NFP W/KB SP	5CB0L59313	N		●
2	Upper Case Q 80SY FP W/KB TR	5CB0L59520	N		●
2	Upper Case Q 80SY NFP W/KB TR	5CB0L59346	N		●
2	Upper Case Q 80SY FP W/KB TI	5CB0L59464	N		●
2	Upper Case Q 80SY NFP W/KB TI	5CB0L59353	N		●
2	Upper Case Q 80SY FP W/KB PO	5CB0L59442	N		●
2	Upper Case Q 80SY NFP W/KB PO	5CB0L59195	N		●
2	Upper Case Q 80SY FP W/KB LA	5CB0L59406	N		●
2	Upper Case Q 80SY NFP W/KB LA	5CB0L59417	N		●
2	Upper Case Q 80SY FP W/KB CF-E	5CB0L60378	N		●
2	Upper Case Q 80SY NFP W/KB CF-E	5CB0L60379	N		●
2	Upper Case Q 80SY FP W/KB KO	5CB0L59356	N		●
2	Upper Case Q 80SY NFP W/KB KO	5CB0L59183	N		●
2	Upper Case Q 80SY FP W/KB CH	5CB0L59395	N		●
2	Upper Case Q 80SY NFP W/KB CH	5CB0L59536	N		●
2	Upper Case Q 80SY FP W/KB RU	5CB0L59416	N		●
2	Upper Case Q 80SY NFP W/KB RU	5CB0L59467	N		●
2	Upper Case Q 80SY FP W/KB FR	5CB0L59384	N		●
2	Upper Case Q 80SY NFP W/KB FR	5CB0L59345	N		●
2	Upper Case Q 80SY FP W/KB GR	5CB0L59452	N		●
2	Upper Case Q 80SY NFP W/KB GR	5CB0L59208	N		●
2	Upper Case Q 80SY FP W/KB AR-E	5CB0L59391	N		●
2	Upper Case Q 80SY NFP W/KB AR-E	5CB0L59348	N		●
2	Upper Case Q 80SY FP W/KB BZ	5CB0L59287	N		●
2	Upper Case Q 80SY NFP W/KB BZ	5CB0L59281	N		●
2	Upper Case Q 80SY FP W/KB NL	5CB0L59334	N		●
2	Upper Case Q 80SY NFP W/KB NL	5CB0L59524	N		●

Lenovo V310-14ISK/Lenovo V310-15ISK Hardware Maintenance Manual

Table 5. Parts list—Overall (continued)

No.	FRU	FRU no.	CRU ID.	Lenovo V310-14ISK	Lenovo V310-15ISK
2	Upper Case Q 80SY FP W/KB GK	5CB0L59217	N		•
2	Upper Case Q 80SY NFP W/KB GK	5CB0L59447	N		•
2	Upper Case Q 80SY FP W/KB HB	5CB0L59340	N		•
2	Upper Case Q 80SY NFP W/KB HB	5CB0L59272	N		•
2	Upper Case Q 80SY FP W/KB HG	5CB0L59361	N		•
2	Upper Case Q 80SY NFP W/KB HG	5CB0L59497	N		•
2	Upper Case Q 80SY FP W/KB ND	5CB0L59509	N		•
2	Upper Case Q 80SY NFP W/KB ND	5CB0L59508	N		•
2	Upper Case Q 80SY FP W/KB BE	5CB0L59489	N		•
2	Upper Case Q 80SY NFP W/KB BE	5CB0L59239	N		•
2	Upper Case Q 80SY FP W/KB ICE	5CB0L59343	N		•
2	Upper Case Q 80SY NFP W/KB ICE	5CB0L59474	N		•
2	Upper Case Q 80SY FP W/KB SA	5CB0L59444	N		•
2	Upper Case Q 80SY NFP W/KB SA	5CB0L59482	N		•
2	Upper Case Q 80SY FP W/KB SW	5CB0L59309	N		•
2	Upper Case Q 80SY NFP W/KB SW	5CB0L59283	N		•
2	Upper Case Q 80SY FP W/KB USINT'E	5CB0L59212	N		•
2	Upper Case Q 80SY NFP W/KBUSINT'E	5CB0L59403	N		•
2	Upper Case Q 80SY FP W/KB CZ-SK	5CB0L59314	N		•
2	Upper Case Q 80SY NFP W/KB CZ-SK	5CB0L59270	N		•
2	Upper Case Q 80SY FP W/KB BU	5CB0L59185	N		•
2	Upper Case Q 80SY NFP W/KB BU	5CB0L59180	N		•
2	Upper Case Q 80SY FP W/KB INDIA	5CB0L59176	N		•
2	Upper Case Q 80SY NFP W/KB INDIA	5CB0L59407	N		•
2	Upper Case Q 80SY FP W/KB FR-AR	5CB0L59188	N		•
2	Upper Case Q 80SY NFP W/KB FR-AR	5CB0L59408	N		•
2	Upper Case Q 80SY FP W/KB UKR	5CB0L59374	N		•
2	Upper Case Q 80SY NFP W/KB UKR	5CB0L59502	N		•
3	Power Board Q 80SX W/Cable	5C50L46619	N	•	
3	Power Board Q 80SY W/Cable	5C50L46667	N		•
3	OneLink Board Q 80SY W/Cable	5C50L70681	N		•
4	LED Board Q 80SY W/Cable	5C50L59205	N		•
5	FP Board Q 80SX W/Cable	5C50L59237	N	•	
5	FP Board Q 80SY W/Cable	5C50L59300	N		•
6	Speaker Q 80SX L+R	5SB0L46729	N	•	
6	Speaker Q 80SY L+R	5SB0L46635	N		•
7	MBQ 80SXNOK 3855U 4G DISFP NBTN	5B20L46689	N	•	
7	MBQ 80SXWIN 3855U 4G DISFP NBTN	5B20L46706	N	•	
7	MBQ 80SXNOK 3855U 4G UMAFP NBTN	5B20L46674	N	•	
7	MBQ 80SXWIN 3855U 4G UMAFP NBTN	5B20L46756	N	•	
7	MBQ 80SXNOK 4405U 4G DISFP NBTN	5B20L46732	N	•	
7	MBQ 80SXWIN 4405U 4G DISFP NBTN	5B20L46592	N	•	
7	MBQ 80SXNOK 4405U 4G UMAFP NBTN	5B20L46742	N	•	
7	MBQ 80SXWIN 4405U 4G UMAFP NBTN	5B20L46552	N	•	
7	MBQ 80SXNOK I36100U 4GDISFPNBTN	5B20L46694	N	•	
7	MBQ 80SXWIN I36100U 4GDISFPNBTN	5B20L46744	N	•	
7	MBQ 80SXNOK I36100U 4GUMAFPNBTN	5B20L46724	N	•	
7	MBQ 80SXWIN I36100U 4GUMAFPNBTN	5B20L46730	N	•	

Table 5. Parts list—Overall (continued)

No.	FRU	FRU no.	CRU ID.	Lenovo V310-14ISK	Lenovo V310-15ISK
7	MBQ 80SXNOK I56200U 4GDISFPNBTN	5B20L46755	N	•	
7	MBQ 80SXWIN I56200U 4GDISFPNBTN	5B20L46655	N	•	
7	MBQ 80SXNOK I56200U 4GUMAFPNBTN	5B20L46620	N	•	
7	MBQ 80SXWIN I56200U 4GUMAFPNBTN	5B20L46654	N	•	
7	MBQ 80SXNOK I56267U 4GDISFPNBTN	5B20L46715	N	•	
7	MBQ 80SXWIN I56267U 4GDISFPNBTN	5B20L46608	N	•	
7	MBQ 80SXNOK I56267U 4GUMAFPNBTN	5B20L46719	N	•	
7	MBQ 80SXWIN I56267U 4GUMAFPNBTN	5B20L46569	N	•	
7	MBQ 80SXNOK I76500U 4GDISFPNBTN	5B20L46651	N	•	
7	MBQ 80SXWIN I76500U 4GDISFPNBTN	5B20L46633	N	•	
7	MBQ 80SXNOK I76500U 4GUMAFPNBTN	5B20L46700	N	•	
7	MBQ 80SXWIN I76500U 4GUMAFPNBTN	5B20L46602	N	•	
7	MBQ 80SXNOK I76567U 4GDISFPNBTN	5B20L46652	N	•	
7	MBQ 80SXWIN I76567U 4GDISFPNBTN	5B20L46726	N	•	
7	MBQ 80SXNOK I76567U 4GUMAFPNBTN	5B20L46606	N	•	
7	MBQ 80SXWIN I76567U 4GUMAFPNBTN	5B20L46583	N	•	
7	MB Q 80SX NOK 3855U 4GDISFPBTN	5B20L59306	N	•	
7	MB Q 80SX WIN 3855U 4GDISFPBTN	5B20L59216	N	•	
7	MBQ 80SXNOK 3855U 4GDISNFPNBTN	5B20L59320	N	•	
7	MBQ 80SXWIN 3855U 4GDISNFPNBTN	5B20L59526	N	•	
7	MBQ 80SX NOK 3855U 4GDISNFPBTN	5B20L59401	N	•	
7	MBQ 80SX WIN 3855U 4GDISNFPBTN	5B20L59476	N	•	
7	MB Q 80SX NOK 3855U 4GUMAFPBTN	5B20L59440	N	•	
7	MB Q 80SX WIN 3855U 4GUMAFPBTN	5B20L59430	N	•	
7	MBQ 80SXNOK 3855U 4GUMANFPNBTN	5B20L59202	N	•	
7	MBQ 80SXWIN 3855U 4GUMANFPNBTN	5B20L59412	N	•	
7	MBQ 80SX NOK 3855U 4GUMANFPBTN	5B20L59258	N	•	
7	MBQ 80SX WIN 3855U 4GUMANFPBTN	5B20L59461	N	•	
7	MB Q 80SX NOK 4405U 4GDISFPBTN	5B20L59527	N	•	
7	MB Q 80SX WIN 4405U 4GDISFPBTN	5B20L59410	N	•	
7	MBQ 80SXNOK 4405U 4GDISNFPNBTN	5B20L59470	N	•	
7	MBQ 80SXWIN 4405U 4GDISNFPNBTN	5B20L59170	N	•	
7	MBQ 80SX NOK 4405U 4GDISNFPBTN	5B20L59396	N	•	
7	MBQ 80SX WIN 4405U 4GDISNFPBTN	5B20L59302	N	•	
7	MB Q 80SX NOK 4405U 4GUMAFPBTN	5B20L59196	N	•	
7	MB Q 80SX WIN 4405U 4GUMAFPBTN	5B20L59420	N	•	
7	MBQ 80SXNOK 4405U 4GUMANFPNBTN	5B20L59288	N	•	
7	MBQ 80SXWIN 4405U 4GUMANFPNBTN	5B20L59271	N	•	
7	MBQ 80SX NOK 4405U 4GUMANFPBTN	5B20L59316	N	•	
7	MBQ 80SX WIN 4405U 4GUMANFPBTN	5B20L59455	N	•	
7	MBQ 80SXNOK I36100U 4GDISFPBTN	5B20L59475	N	•	
7	MBQ 80SXWIN I36100U 4GDISFPBTN	5B20L59511	N	•	
7	MBQ80SXNOK I36100U4GDISNFPNBTN	5B20L59322	N	•	
7	MBQ80SXWIN I36100U4GDISNFPNBTN	5B20L59495	N	•	
7	MBQ 80SXNOKI36100U 4GDISNFPBTN	5B20L59355	N	•	
7	MBQ 80SXWINI36100U 4GDISNFPBTN	5B20L59285	N	•	
7	MBQ 80SXNOKI36100U 4GUMANFPBTN	5B20L59295	N	•	
7	MBQ 80SXWINI36100U 4GUMANFPBTN	5B20L59279	N	•	

Lenovo V310-14ISK/Lenovo V310-15ISK Hardware Maintenance Manual

Table 5. Parts list—Overall (continued)

No.	FRU	FRU no.	CRU ID.	Lenovo V310-14ISK	Lenovo V310-15ISK
7	MBQ80SXNOK I36100U4GUMANFPNBTN	5B20L59246	N	•	
7	MBQ80SXWIN I36100U4GUMANFPNBTN	5B20L59362	N	•	
7	MBQ 80SXNOK I36100U 4GUMAFPBTN	5B20L59397	N	•	
7	MBQ 80SXWIN I36100U 4GUMAFPBTN	5B20L59381	N	•	
7	MBQ 80SXNOK I56200U 4GDISFPBTN	5B20L59487	N	•	
7	MBQ 80SXWIN I56200U 4GDISFPBTN	5B20L59532	N	•	
7	MBQ80SXNOK I56200U4GDISNFPNBTN	5B20L59301	N	•	
7	MBQ80SXWIN I56200U4GDISNFPNBTN	5B20L59191	N	•	
7	MBQ 80SXNOKI56200U 4GDISNFPBTN	5B20L59278	N	•	
7	MBQ 80SXWINI56200U 4GDISNFPBTN	5B20L59228	N	•	
7	MBQ 80SXNOK I56200U 4GUMAFPBTN	5B20L59405	N	•	
7	MBQ 80SXWIN I56200U 4GUMAFPBTN	5B20L59184	N	•	
7	MBQ80SXNOK I56200U4GUMANFPNBTN	5B20L59535	N	•	
7	MBQ80SXWIN I56200U4GUMANFPNBTN	5B20L59219	N	•	
7	MBQ 80SXNOKI56200U 4GUMANFPBTN	5B20L59400	N	•	
7	MBQ 80SXWINI56200U 4GUMANFPBTN	5B20L59310	N	•	
7	MBQ 80SXNOK I56267U 4GDISFPBTN	5B20L59499	N	•	
7	MBQ 80SXWIN I56267U 4GDISFPBTN	5B20L59240	N	•	
7	MBQ80SXNOK I56267U4GDISNFPNBTN	5B20L59377	N	•	
7	MBQ80SXWIN I56267U4GDISNFPNBTN	5B20L59504	N	•	
7	MBQ 80SXNOKI56267U 4GDISNFPBTN	5B20L59380	N	•	
7	MBQ 80SXWINI56267U 4GDISNFPBTN	5B20L59434	N	•	
7	MBQ 80SXNOK I56267U 4GUMAFPBTN	5B20L59453	N	•	
7	MBQ 80SXWIN I56267U 4GUMAFPBTN	5B20L59543	N	•	
7	MBQ80SXNOK I56267U4GUMANFPNBTN	5B20L59324	N	•	
7	MBQ80SXWIN I56267U4GUMANFPNBTN	5B20L59342	N	•	
7	MBQ 80SXNOKI56267U 4GUMANFPBTN	5B20L59255	N	•	
7	MBQ 80SXWINI56267U 4GUMANFPBTN	5B20L59293	N	•	
7	MBQ 80SXNOK I76500U 4GDISFPBTN	5B20L59238	N	•	
7	MBQ 80SXWIN I76500U 4GDISFPBTN	5B20L59516	N	•	
7	MBQ80SXNOK I76500U4GDISNFPNBTN	5B20L59531	N	•	
7	MBQ80SXWIN I76500U4GDISNFPNBTN	5B20L59544	N	•	
7	MBQ 80SXNOKI76500U 4GDISNFPBTN	5B20L59360	N	•	
7	MBQ 80SXWINI76500U 4GDISNFPBTN	5B20L59418	N	•	
7	MBQ 80SXNOK I76500U 4GUMAFPBTN	5B20L59539	N	•	
7	MBQ 80SXWIN I76500U 4GUMAFPBTN	5B20L59507	N	•	
7	MBQ80SXNOK I76500U4GUMANFPNBTN	5B20L59307	N	•	
7	MBQ80SXWIN I76500U4GUMANFPNBTN	5B20L59493	N	•	
7	MBQ 80SXNOKI76500U 4GUMANFPBTN	5B20L59241	N	•	
7	MBQ 80SXWINI76500U 4GUMANFPBTN	5B20L59198	N	•	
7	MBQ 80SXNOK I76567U 4GDISFPBTN	5B20L59368	N	•	
7	MBQ 80SXWIN I76567U 4GDISFPBTN	5B20L59177	N	•	
7	MBQ80SXNOK I76567U4GDISNFPNBTN	5B20L59280	N	•	
7	MBQ80SXWIN I76567U4GDISNFPNBTN	5B20L59175	N	•	
7	MBQ 80SXNOKI76567U 4GDISNFPBTN	5B20L59428	N	•	
7	MBQ 80SXWINI76567U 4GDISNFPBTN	5B20L59521	N	•	
7	MBQ 80SXNOK I76567U 4GUMAFPBTN	5B20L59383	N	•	
7	MBQ 80SXWIN I76567U 4GUMAFPBTN	5B20L59347	N	•	

Table 5. Parts list—Overall (continued)

No.	FRU	FRU no.	CRU ID.	Lenovo V310-14ISK	Lenovo V310-15ISK
7	MBQ80SXNOK I76567U4GUMANFPNBTN	5B20L59276	N	•	
7	MBQ80SXWIN I76567U4GUMANFPNBTN	5B20L59171	N	•	
7	MBQ 80SXNOKI76567U 4GUMANFPBTN	5B20L59449	N	•	
7	MBQ 80SXWINI76567U 4GUMANFPBTN	5B20L59182	N	•	
7	MBQ80SX NOK 3855U 4GDIS FP 2BA	5B20L66158	N	•	
7	MBQ80SX WIN 3855U 4GDIS FP 2BA	5B20L66186	N	•	
7	MBQ80SX NOK 3855U 4GDIS NFP2BA	5B20L66228	N	•	
7	MBQ80SX WIN 3855U 4GDIS NFP2BA	5B20L66254	N	•	
7	MBQ80SX NOK 3855U 4GUMA FP 2BA	5B20L66240	N	•	
7	MBQ80SX WIN 3855U 4GUMA FP 2BA	5B20L66153	N	•	
7	MBQ80SX NOK 3855U 4GUMA NFP2BA	5B20L66196	N	•	
7	MBQ80SX WIN 3855U 4GUMA NFP2BA	5B20L66225	N	•	
7	MBQ80SX NOK 4405U 4GDIS FP 2BA	5B20L66277	N	•	
7	MBQ80SX WIN 4405U 4GDIS FP 2BA	5B20L66278	N	•	
7	MBQ80SX NOK 4405U 4GDIS NFP2BA	5B20L66163	N	•	
7	MBQ80SX WIN 4405U 4GDIS NFP2BA	5B20L66239	N	•	
7	MBQ80SX NOK 4405U 4GUMA FP 2BA	5B20L66238	N	•	
7	MBQ80SX WIN 4405U 4GUMA FP 2BA	5B20L66243	N	•	
7	MBQ80SX NOK 4405U 4GUMA NFP2BA	5B20L66148	N	•	
7	MBQ80SX WIN 4405U 4GUMA NFP2BA	5B20L66233	N	•	
7	MBQ80SX NOKI36100U 4GDIS FP2BA	5B20L66208	N	•	
7	MBQ80SX WINI36100U 4GDIS FP2BA	5B20L66177	N	•	
7	MBQ80SX NOKI36100U 4GDISNFP2BA	5B20L66190	N	•	
7	MBQ80SX WINI36100U 4GDISNFP2BA	5B20L66246	N	•	
7	MBQ80SX NOKI36100U 4GUMA FP2BA	5B20L66293	N	•	
7	MBQ80SX WINI36100U 4GUMA FP2BA	5B20L66140	N	•	
7	MBQ80SX NOKI36100U 4GUMANFP2BA	5B20L66169	N	•	
7	MBQ80SX WINI36100U 4GUMANFP2BA	5B20L66187	N	•	
7	MBQ80SX NOKI56200U 4GDIS FP2BA	5B20L66219	N	•	
7	MBQ80SX WINI56200U 4GDIS FP2BA	5B20L66211	N	•	
7	MBQ80SX NOKI56200U 4GDISNFP2BA	5B20L66149	N	•	
7	MBQ80SX WINI56200U 4GDISNFP2BA	5B20L66288	N	•	
7	MBQ80SX NOKI56200U 4GUMA FP2BA	5B20L66273	N	•	
7	MBQ80SX WINI56200U 4GUMA FP2BA	5B20L66175	N	•	
7	MBQ80SX NOKI56200U 4GUMANFP2BA	5B20L66164	N	•	
7	MBQ80SX WINI56200U 4GUMANFP2BA	5B20L66179	N	•	
7	MBQ80SX NOKI56267U 4GDIS FP2BA	5B20L66185	N	•	
7	MBQ80SX WINI56267U 4GDIS FP2BA	5B20L66274	N	•	
7	MBQ80SX NOKI56267U 4GDISNFP2BA	5B20L66145	N	•	
7	MBQ80SX WINI56267U 4GDISNFP2BA	5B20L66263	N	•	
7	MBQ80SX NOKI56267U 4GUMA FP2BA	5B20L66161	N	•	
7	MBQ80SX WINI56267U 4GUMA FP2BA	5B20L66218	N	•	
7	MBQ80SX NOKI56267U 4GUMANFP2BA	5B20L66283	N	•	
7	MBQ80SX WINI56267U 4GUMANFP2BA	5B20L66247	N	•	
7	MBQ80SX NOKI76500U 4GDIS FP2BA	5B20L66193	N	•	
7	MBQ80SX WINI76500U 4GDIS FP2BA	5B20L66167	N	•	
7	MBQ80SX NOKI76500U 4GDISNFP2BA	5B20L66152	N	•	
7	MBQ80SX WINI76500U 4GDISNFP2BA	5B20L66267	N	•	

Lenovo V310-14ISK/Lenovo V310-15ISK Hardware Maintenance Manual

Table 5. Parts list—Overall (continued)

No.	FRU	FRU no.	CRU ID.	Lenovo	Lenovo
				V310-14ISK	V310-15ISK
7	MBQ80SX NOKI76500U 4GUMA FP2BA	5B20L66231	N	•	
7	MBQ80SX WINI76500U 4GUMA FP2BA	5B20L66181	N	•	
7	MBQ80SX NOKI76500U 4GUMANFP2BA	5B20L66262	N	•	
7	MBQ80SX WINI76500U 4GUMANFP2BA	5B20L66171	N	•	
7	MBQ80SX NOKI76567U 4GDIS FP2BA	5B20L66227	N	•	
7	MBQ80SX WINI76567U 4GDIS FP2BA	5B20L66204	N	•	
7	MBQ80SX NOKI76567U 4GDISNFP2BA	5B20L66178	N	•	
7	MBQ80SX WINI76567U 4GDISNFP2BA	5B20L66214	N	•	
7	MBQ80SX NOKI76567U 4GUMA FP2BA	5B20L66242	N	•	
7	MBQ80SX WINI76567U 4GUMA FP2BA	5B20L66183	N	•	
7	MBQ80SX NOKI76567U 4GUMANFP2BA	5B20L66259	N	•	
7	MBQ80SX WINI76567U 4GUMANFP2BA	5B20L66137	N	•	
7	MBQ80SY NOK3855U 4GDIS FPOL2BA	5B20L66268	N		•
7	MBQ80SY WIN3855U 4GDIS FPOL2BA	5B20L66289	N		•
7	MBQ80SY NOK3855U 4GDISNFPOL2BA	5B20L66182	N		•
7	MBQ80SY WIN3855U 4GDISNFPOL2BA	5B20L66272	N		•
7	MBQ80SY NOK3855U 4GUMA FPOL2BA	5B20L66279	N		•
7	MBQ80SY WIN3855U 4GUMA FPOL2BA	5B20L66221	N		•
7	MBQ80SY NOK3855U 4GUMANFPOL2BA	5B20L66159	N		•
7	MBQ80SY WIN3855U 4GUMANFPOL2BA	5B20L66156	N		•
7	MBQ80SY NOK4405U 4GDIS FPOL2BA	5B20L66285	N		•
7	MBQ80SY WIN4405U 4GDIS FPOL2BA	5B20L66205	N		•
7	MBQ80SY NOK4405U 4GDISNFPOL2BA	5B20L66147	N		•
7	MBQ80SY WIN4405U 4GDISNFPOL2BA	5B20L66134	N		•
7	MBQ80SY NOK4405U 4GUMA FPOL2BA	5B20L66194	N		•
7	MBQ80SY WIN4405U 4GUMA FPOL2BA	5B20L66170	N		•
7	MBQ80SY NOK4405U 4GUMANFPOL2BA	5B20L66264	N		•
7	MBQ80SY WIN4405U 4GUMANFPOL2BA	5B20L66234	N		•
7	MBQ80SYNOKI36100U 4GDISFPOL2BA	5B20L66276	N		•
7	MBQ80SYWINI36100U 4GDISFPOL2BA	5B20L66150	N		•
7	MBQ80SYNOKI36100U 4GDISNFPOL2BA	5B20L66255	N		•
7	MBQ80SYWINI36100U 4GDISNFPOL2BA	5B20L66224	N		•
7	MBQ80SYNOKI36100U 4GUMAFPOL2BA	5B20L66290	N		•
7	MBQ80SYWINI36100U 4GUMAFPOL2BA	5B20L66235	N		•
7	MBQ80SYNOKI36100U 4GUMANFOL2BA	5B20L66174	N		•
7	MBQ80SYWINI36100U 4GUMANFOL2BA	5B20L66180	N		•
7	MBQ80SYNOKI56200U 4GDISFPOL2BA	5B20L66165	N		•
7	MBQ80SYWINI56200U 4GDISFPOL2BA	5B20L66261	N		•
7	MBQ80SYNOKI56200U 4GDISNFPOL2BA	5B20L66253	N		•
7	MBQ80SYWINI56200U 4GDISNFPOL2BA	5B20L66172	N		•
7	MBQ80SYNOKI56200U 4GUMAFPOL2BA	5B20L66215	N		•
7	MBQ80SYWINI56200U 4GUMAFPOL2BA	5B20L66206	N		•
7	MBQ80SYNOKI56200U 4GUMANFOL2BA	5B20L66271	N		•
7	MBQ80SYWINI56200U 4GUMANFOL2BA	5B20L66223	N		•
7	MBQ80SYNOKI56267U 4GDISFPOL2BA	5B20L66195	N		•
7	MBQ80SYWINI56267U 4GDISFPOL2BA	5B20L66245	N		•
7	MBQ80SYNOKI56267U 4GDISNFPOL2BA	5B20L66232	N		•
7	MBQ80SYWINI56267U 4GDISNFPOL2BA	5B20L66217	N		•

Table 5. Parts list—Overall (continued)

No.	FRU	FRU no.	CRU ID.	Lenovo V310-14ISK	Lenovo V310-15ISK
7	MBQ80SYNOKI56267U 4GUMAFPOL2BA	5B20L66222	N		●
7	MBQ80SYWINI56267U 4GUMAFPOL2BA	5B20L66130	N		●
7	MBQ80SYNOKI56267U 4GUMANFOL2BA	5B20L66212	N		●
7	MBQ80SYWINI56267U 4GUMANFOL2BA	5B20L66291	N		●
7	MBQ80SYNOKI76500U 4GDISFPOL2BA	5B20L66160	N		●
7	MBQ80SYWINI76500U 4GDISFPOL2BA	5B20L66244	N		●
7	MBQ80SYNOKI76500U 4GDISNFOL2BA	5B20L66213	N		●
7	MBQ80SYWINI76500U 4GDISNFOL2BA	5B20L66127	N		●
7	MBQ80SYNOKI76500U 4GUMAFPOL2BA	5B20L66157	N		●
7	MBQ80SYWINI76500U 4GUMAFPOL2BA	5B20L66132	N		●
7	MBQ80SYNOKI76500U 4GUMANFOL2BA	5B20L66192	N		●
7	MBQ80SYWINI76500U 4GUMANFOL2BA	5B20L66191	N		●
7	MBQ80SYNOKI76567U 4GDISFPOL2BA	5B20L66146	N		●
7	MBQ80SYWINI76567U 4GDISFPOL2BA	5B20L66154	N		●
7	MBQ80SYNOKI76567U 4GDISNFOL2BA	5B20L66257	N		●
7	MBQ80SYWINI76567U 4GDISNFOL2BA	5B20L66287	N		●
7	MBQ80SYNOKI76567U 4GUMAFPOL2BA	5B20L66131	N		●
7	MBQ80SYWINI76567U 4GUMAFPOL2BA	5B20L66168	N		●
7	MBQ80SYNOKI76567U 4GUMANFOL2BA	5B20L66256	N		●
7	MBQ80SYWINI76567U 4GUMANFOL2BA	5B20L66200	N		●
7	MBQ80SY NOK3855U 4GDISFPNOL2BA	5B20L66249	N		●
7	MBQ80SY WIN3855U 4GDISFPNOL2BA	5B20L66197	N		●
7	MBQ80SY NOK3855U 4GDISNFOL2BA	5B20L66269	N		●
7	MBQ80SY WIN3855U 4GDISNFOL2BA	5B20L66176	N		●
7	MBQ80SY NOK3855U 4GUMAFPOL2BA	5B20L66229	N		●
7	MBQ80SY WIN3855U 4GUMAFPOL2BA	5B20L66141	N		●
7	MBQ80SY NOK3855U 4GUMANFNOL2BA	5B20L66265	N		●
7	MBQ80SY WIN3855U 4GUMANFNOL2BA	5B20L66133	N		●
7	MBQ80SY NOK4405U 4GDISFPNOL2BA	5B20L66258	N		●
7	MBQ80SY WIN4405U 4GDISFPNOL2BA	5B20L66216	N		●
7	MBQ80SY NOK4405U 4GDISNFOL2BA	5B20L66270	N		●
7	MBQ80SY WIN4405U 4GDISNFOL2BA	5B20L66184	N		●
7	MBQ80SY NOK4405U 4GUMAFPOL2BA	5B20L66275	N		●
7	MBQ80SY WIN4405U 4GUMAFPOL2BA	5B20L66207	N		●
7	MBQ80SY NOK4405U 4GUMANFNOL2BA	5B20L66209	N		●
7	MBQ80SY WIN4405U 4GUMANFNOL2BA	5B20L66230	N		●
7	MBQ80SYNOKI36100U 4GDISFPNO2BA	5B20L66201	N		●
7	MBQ80SYWINI36100U 4GDISFPNO2BA	5B20L66252	N		●
7	MBQ80SYNOKI36100U 4GDISNFNO2BA	5B20L66294	N		●
7	MBQ80SYWINI36100U 4GDISNFNO2BA	5B20L66199	N		●
7	MBQ80SYNOKI36100U 4GUMAFPNO2BA	5B20L66189	N		●
7	MBQ80SYWINI36100U 4GUMAFPNO2BA	5B20L66266	N		●
7	MBQ80SYNOKI36100U 4GUMANFNNO2BA	5B20L66188	N		●
7	MBQ80SYWINI36100U 4GUMANFNNO2BA	5B20L66292	N		●
7	MBQ80SYNOKI56200U 4GDISFPNO2BA	5B20L66144	N		●
7	MBQ80SYWINI56200U 4GDISFPNO2BA	5B20L66166	N		●
7	MBQ80SYNOKI56200U 4GDISNFNO2BA	5B20L66282	N		●
7	MBQ80SYWINI56200U 4GDISNFNO2BA	5B20L66281	N		●

Lenovo V310-14ISK/Lenovo V310-15ISK Hardware Maintenance Manual

Table 5. Parts list—Overall (continued)

No.	FRU	FRU no.	CRU ID.	Lenovo	Lenovo
				V310-14ISK	V310-15ISK
7	MBQ80SYNOKI56200U 4GUMAFPNO2BA	5B20L66139	N		●
7	MBQ80SYWINI56200U 4GUMAFPNO2BA	5B20L66138	N		●
7	MBQ80SYNOKI56200U 4GUMANFNO2BA	5B20L66236	N		●
7	MBQ80SYWINI56200U 4GUMANFNO2BA	5B20L66136	N		●
7	MBQ80SYNOKI56267U 4GDISFPNO2BA	5B20L66226	N		●
7	MBQ80SYWINI56267U 4GDISFPNO2BA	5B20L66151	N		●
7	MBQ80SYNOKI56267U 4GDISNFNO2BA	5B20L66280	N		●
7	MBQ80SYWINI56267U 4GDISNFNO2BA	5B20L66286	N		●
7	MBQ80SYNOKI56267U 4GUMAFPNO2BA	5B20L66284	N		●
7	MBQ80SYWINI56267U 4GUMAFPNO2BA	5B20L66202	N		●
7	MBQ80SYNOKI56267U 4GUMANFNO2BA	5B20L66237	N		●
7	MBQ80SYWINI56267U 4GUMANFNO2BA	5B20L66210	N		●
7	MBQ80SYNOKI76500U 4GDISFPNO2BA	5B20L66142	N		●
7	MBQ80SYWINI76500U 4GDISFPNO2BA	5B20L66173	N		●
7	MBQ80SYNOKI76500U 4GDISNFNO2BA	5B20L66260	N		●
7	MBQ80SYWINI76500U 4GDISNFNO2BA	5B20L66250	N		●
7	MBQ80SYNOKI76500U 4GUMAFPNO2BA	5B20L66220	N		●
7	MBQ80SYWINI76500U 4GUMAFPNO2BA	5B20L66128	N		●
7	MBQ80SYNOKI76500U 4GUMANFNO2BA	5B20L66241	N		●
7	MBQ80SYWINI76500U 4GUMANFNO2BA	5B20L66203	N		●
7	MBQ80SYNOKI76567U 4GDISFPNO2BA	5B20L66129	N		●
7	MBQ80SYWINI76567U 4GDISFPNO2BA	5B20L66162	N		●
7	MBQ80SYNOKI76567U 4GDISNFNO2BA	5B20L66198	N		●
7	MBQ80SYWINI76567U 4GDISNFNO2BA	5B20L66248	N		●
7	MBQ80SYNOKI76567U 4GUMAFPNO2BA	5B20L66135	N		●
7	MBQ80SYWINI76567U 4GUMAFPNO2BA	5B20L66155	N		●
7	MBQ80SYNOKI76567U 4GUMANFNO2BA	5B20L66251	N		●
7	MBQ80SYWINI76567U 4GUMANFNO2BA	5B20L66143	N		●
7	MBQ 80SYNOK 3855U 4GDISFPOLNBTN	5B20L46646	N		●
7	MBQ 80SYWIN 3855U 4GDISFPOLNBTN	5B20L46572	N		●
7	MBQ 80SYNOK 3855U 4GUMAFPOLNBTN	5B20L46573	N		●
7	MBQ 80SYWIN 3855U 4GUMAFPOLNBTN	5B20L46687	N		●
7	MBQ 80SYNOK 4405U 4GDISFPOLNBTN	5B20L46628	N		●
7	MBQ 80SYWIN 4405U 4GDISFPOLNBTN	5B20L46618	N		●
7	MBQ 80SYNOK 4405U 4GUMAFPOLNBTN	5B20L46614	N		●
7	MBQ 80SYWIN 4405U 4GUMAFPOLNBTN	5B20L46714	N		●
7	MBQ80SYNOK I36100U4GDISFPOLNBTN	5B20L46749	N		●
7	MBQ80SYWIN I36100U4GDISFPOLNBTN	5B20L46662	N		●
7	MBQ80SYNOK I36100U4GUMAFPOLNBTN	5B20L46731	N		●
7	MBQ80SYWIN I36100U4GUMAFPOLNBTN	5B20L46691	N		●
7	MBQ80SYNOK I56200U4GDISFPOLNBTN	5B20L46556	N		●
7	MBQ80SYWIN I56200U4GDISFPOLNBTN	5B20L46591	N		●
7	MBQ80SYNOK I56200U4GUMAFPOLNBTN	5B20L46739	N		●
7	MBQ80SYWIN I56200U4GUMAFPOLNBTN	5B20L46576	N		●
7	MBQ80SYNOK I56267U4GDISFPOLNBTN	5B20L46653	N		●
7	MBQ80SYWIN I56267U4GDISFPOLNBTN	5B20L46692	N		●
7	MBQ80SYNOK I56267U4GUMAFPOLNBTN	5B20L46758	N		●
7	MBQ80SYWIN I56267U4GUMAFPOLNBTN	5B20L46587	N		●

Table 5. Parts list—Overall (continued)

No.	FRU	FRU no.	CRU ID.	Lenovo V310-14ISK	Lenovo V310-15ISK
7	MBQ80SYNOK I76500U4GDISFPOLNBTN	5B20L46588	N		●
7	MBQ80SYWIN I76500U4GDISFPOLNBTN	5B20L46575	N		●
7	MBQ80SYNOK I76500U4GUMAFPOLNBTN	5B20L46571	N		●
7	MBQ80SYWIN I76500U4GUMAFPOLNBTN	5B20L46599	N		●
7	MBQ80SYNOK I76567U4GDISFPOLNBTN	5B20L46634	N		●
7	MBQ80SYWIN I76567U4GDISFPOLNBTN	5B20L46697	N		●
7	MBQ80SYNOK I76567U4GUMAFPOLNBTN	5B20L46596	N		●
7	MBQ80SYWIN I76567U4GUMAFPOLNBTN	5B20L46660	N		●
7	MBQ80SYNOK 3855U 4GDISFPOLNBTN	5B20L46590	N		●
7	MBQ80SYWIN 3855U 4GDISFPOLNBTN	5B20L46760	N		●
7	MBQ80SYNOK 3855U 4GUMAFPOLNBTN	5B20L46607	N		●
7	MBQ80SYWIN 3855U 4GUMAFPOLNBTN	5B20L46759	N		●
7	MBQ80SYNOK 4405U 4GDISFPOLNBTN	5B20L46621	N		●
7	MBQ80SYWIN 4405U 4GDISFPOLNBTN	5B20L46645	N		●
7	MBQ80SYNOK 4405U 4GUMAFPOLNBTN	5B20L46625	N		●
7	MBQ80SYWIN 4405U 4GUMAFPOLNBTN	5B20L46666	N		●
7	MBQ80SYNOKI36100U4GDISFPOLNBTN	5B20L46762	N		●
7	MBQ80SYWINI36100U4GDISFPOLNBTN	5B20L46558	N		●
7	MBQ80SYNOKI36100U4GUMAFPOLNBTN	5B20L46679	N		●
7	MBQ80SYWINI36100U4GUMAFPOLNBTN	5B20L46644	N		●
7	MBQ80SYNOKI56200U4GDISFPOLNBTN	5B20L46672	N		●
7	MBQ80SYWINI56200U4GDISFPOLNBTN	5B20L46609	N		●
7	MBQ80SYNOKI56200U4GUMAFPOLNBTN	5B20L46557	N		●
7	MBQ80SYWINI56200U4GUMAFPOLNBTN	5B20L46699	N		●
7	MBQ80SYNOKI56267U4GDISFPOLNBTN	5B20L46610	N		●
7	MBQ80SYWINI56267U4GDISFPOLNBTN	5B20L46716	N		●
7	MBQ80SYNOKI56267U4GUMAFPOLNBTN	5B20L46727	N		●
7	MBQ80SYWINI56267U4GUMAFPOLNBTN	5B20L46623	N		●
7	MBQ80SYNOKI76500U4GDISFPOLNBTN	5B20L46712	N		●
7	MBQ80SYWINI76500U4GDISFPOLNBTN	5B20L46566	N		●
7	MBQ80SYNOKI76500U4GUMAFPOLNBTN	5B20L46685	N		●
7	MBQ80SYWINI76500U4GUMAFPOLNBTN	5B20L46693	N		●
7	MBQ80SYNOKI76567U4GDISFPOLNBTN	5B20L46613	N		●
7	MBQ80SYWINI76567U4GDISFPOLNBTN	5B20L46734	N		●
7	MBQ80SYNOKI76567U4GUMAFPOLNBTN	5B20L46728	N		●
7	MBQ80SYWINI76567U4GUMAFPOLNBTN	5B20L46584	N		●
7	MBQ 80SYNOK 3855U 4GDISFPOLBTN	5B20L59394	N		●
7	MBQ 80SYWIN 3855U 4GDISFPOLBTN	5B20L59385	N		●
7	MBQ80SYNOK 3855U4GDISFPOLNBTN	5B20L59427	N		●
7	MBQ80SYWIN 3855U4GDISFPOLNBTN	5B20L59514	N		●
7	MBQ80SYNOK 3855U 4GDISFPOLBTN	5B20L59438	N		●
7	MBQ80SYWIN 3855U 4GDISFPOLBTN	5B20L59328	N		●
7	MBQ 80SYNOK 3855U 4GUMAFPOLBTN	5B20L59376	N		●
7	MBQ 80SYWIN 3855U 4GUMAFPOLBTN	5B20L59303	N		●
7	MBQ80SYNOK 3855U4GUMANFPOLNBTN	5B20L59488	N		●
7	MBQ80SYWIN 3855U4GUMANFPOLNBTN	5B20L59491	N		●
7	MBQ80SYNOK 3855U 4GUMANFPOLBTN	5B20L59341	N		●
7	MBQ80SYWIN 3855U 4GUMANFPOLBTN	5B20L59398	N		●

Lenovo V310-14ISK/Lenovo V310-15ISK Hardware Maintenance Manual

Table 5. Parts list—Overall (continued)

No.	FRU	FRU no.	CRU ID.	Lenovo V310-14ISK	Lenovo V310-15ISK
7	MBQ 80SYNOK 4405U 4GDISFPOLBTN	5B20L59203	N		●
7	MBQ 80SYWIN 4405U 4GDISFPOLBTN	5B20L59225	N		●
7	MBQ80SYNOK 4405U4GDISNFPOLNBTN	5B20L59327	N		●
7	MBQ80SYWIN 4405U4GDISNFPOLNBTN	5B20L59386	N		●
7	MBQ80SYNOK 4405U 4GDISNFPOLBTN	5B20L59338	N		●
7	MBQ80SYWIN 4405U 4GDISNFPOLBTN	5B20L59277	N		●
7	MBQ 80SYNOK 4405U 4GUMAFPOLBTN	5B20L59296	N		●
7	MBQ 80SYWIN 4405U 4GUMAFPOLBTN	5B20L59445	N		●
7	MBQ80SYNOK 4405U4GUMANFPOLNBTN	5B20L59213	N		●
7	MBQ80SYWIN 4405U4GUMANFPOLNBTN	5B20L59220	N		●
7	MBQ80SYNOK 4405U 4GUMANFPOLBTN	5B20L59315	N		●
7	MBQ80SYWIN 4405U 4GUMANFPOLBTN	5B20L59437	N		●
7	MBQ80SYNOK I36100U4GDISFPOLBTN	5B20L59448	N		●
7	MBQ80SYWINI36100U4GUMNFPOLNBTN	5B20L59485	N		●
7	MBQ80SYNOKI36100U4GUMANFPOLBTN	5B20L59375	N		●
7	MBQ80SYWINI36100U4GUMANFPOLBTN	5B20L59290	N		●
7	MBQ80SYNOK I56200U4GDISFPOLBTN	5B20L59318	N		●
7	MBQ80SYWIN I56200U4GDISFPOLBTN	5B20L59210	N		●
7	MBQ80SYNOKI56200U4GDINFPOLNBTN	5B20L59500	N		●
7	MBQ80SYWINI56200U4GDINFPOLNBTN	5B20L59450	N		●
7	MBQ80SYNOKI56200U4GDISNFPOLBTN	5B20L59515	N		●
7	MBQ80SYWINI56200U4GDISNFPOLBTN	5B20L59189	N		●
7	MBQ80SYNOK I56200U4GUMAFPOLBTN	5B20L59529	N		●
7	MBQ80SYWIN I56200U4GUMAFPOLBTN	5B20L59312	N		●
7	MBQ80SYNOKI56200U4GUMNFPOLNBTN	5B20L59538	N		●
7	MBQ80SYWINI56200U4GUMNFPOLNBTN	5B20L59256	N		●
7	MBQ80SYNOKI56200U4GUMANFPOLBTN	5B20L59483	N		●
7	MBQ80SYWINI56200U4GUMANFPOLBTN	5B20L59273	N		●
7	MBQ80SYNOK I56267U4GDISFPOLBTN	5B20L59297	N		●
7	MBQ80SYWIN I56267U4GDISFPOLBTN	5B20L59199	N		●
7	MBQ80SYNOKI56267U4GDINFPOLNBTN	5B20L59178	N		●
7	MBQ80SYWINI56267U4GDINFPOLNBTN	5B20L59243	N		●
7	MBQ80SYNOKI56267U4GDISNFPOLBTN	5B20L59486	N		●
7	MBQ80SYWINI56267U4GDISNFPOLBTN	5B20L59460	N		●
7	MBQ80SYNOK I56267U4GUMAFPOLBTN	5B20L59371	N		●
7	MBQ80SYWIN I56267U4GUMAFPOLBTN	5B20L59480	N		●
7	MBQ80SYNOKI56267U4GUMNFPOLNBTN	5B20L59289	N		●
7	MBQ80SYWINI56267U4GUMNFPOLNBTN	5B20L59249	N		●
7	MBQ80SYNOKI56267U4GUMANFPOLBTN	5B20L59490	N		●
7	MBQ80SYWINI56267U4GUMANFPOLBTN	5B20L59469	N		●
7	MBQ80SYNOK I76500U4GDISFPOLBTN	5B20L59261	N		●
7	MBQ80SYWIN I76500U4GDISFPOLBTN	5B20L59456	N		●
7	MBQ80SYNOKI76500U4GDINFPOLNBTN	5B20L59332	N		●
7	MBQ80SYWINI76500U4GDINFPOLNBTN	5B20L59369	N		●
7	MBQ80SYNOKI76500U4GDISNFPOLBTN	5B20L59468	N		●
7	MBQ80SYWINI76500U4GDISNFPOLBTN	5B20L59214	N		●
7	MBQ80SYNOK I76500U4GUMAFPOLBTN	5B20L59204	N		●
7	MBQ80SYWIN I76500U4GUMAFPOLBTN	5B20L59415	N		●

Table 5. Parts list—Overall (continued)

No.	FRU	FRU no.	CRU ID.	Lenovo V310-14ISK	Lenovo V310-15ISK
7	MBQ80SYNOKI76500U4GUMNFPOLNBTN	5B20L59344	N		•
7	MBQ80SYWINI76500U4GUMNFPOLNBTN	5B20L59518	N		•
7	MBQ80SYNOKI76500U4GUMANFPOLBTN	5B20L59174	N		•
7	MBQ80SYWINI76500U4GUMANFPOLBTN	5B20L59363	N		•
7	MBQ80SYNOK I76567U4GDISFPOLBTN	5B20L59194	N		•
7	MBQ80SYWIN I76567U4GDISFPOLBTN	5B20L59426	N		•
7	MBQ80SYNOKI76567U4GDINFPOLNBTN	5B20L59498	N		•
7	MBQ80SYWINI76567U4GDINFPOLNBTN	5B20L59354	N		•
7	MBQ80SYNOKI76567U4GDISNFPOLBTN	5B20L59326	N		•
7	MBQ80SYWINI76567U4GDISNFPOLBTN	5B20L59266	N		•
7	MBQ80SYNOK I76567U4GUMAFPOLBTN	5B20L59330	N		•
7	MBQ80SYWIN I76567U4GUMAFPOLBTN	5B20L59506	N		•
7	MBQ80SYNOKI76567U4GUMNFPOLNBTN	5B20L59333	N		•
7	MBQ80SYWINI76567U4GUMNFPOLNBTN	5B20L59187	N		•
7	MBQ80SYNOKI76567U4GUMANFPOLBTN	5B20L59366	N		•
7	MBQ80SYWINI76567U4GUMANFPOLBTN	5B20L59192	N		•
7	MBQ80SYNOK 3855U 4GDISFPOLBTN	5B20L59186	N		•
7	MBQ80SYWIN 3855U 4GDISFPOLBTN	5B20L59519	N		•
7	MBQ80SYNOK3855U4GDISNFPOLNBTN	5B20L59248	N		•
7	MBQ80SYWIN3855U4GDISNFPOLNBTN	5B20L59304	N		•
7	MBQ80SYNOK 3855U4GDISNFPOLBTN	5B20L59373	N		•
7	MBQ80SYWIN 3855U4GDISNFPOLBTN	5B20L59471	N		•
7	MBQ80SYNOK 3855U 4GUMAFPOLBTN	5B20L59331	N		•
7	MBQ80SYWIN 3855U 4GUMAFPOLBTN	5B20L59230	N		•
7	MBQ80SYNOK3855U4GUMANFPOLNBTN	5B20L59429	N		•
7	MBQ80SYWIN3855U4GUMANFPOLNBTN	5B20L59451	N		•
7	MBQ80SYNOK 3855U4GUMANFPOLBTN	5B20L59226	N		•
7	MBQ80SYWIN 3855U4GUMANFPOLBTN	5B20L59478	N		•
7	MBQ80SYNOK 4405U 4GDISFPOLBTN	5B20L59435	N		•
7	MBQ80SYWIN 4405U 4GDISFPOLBTN	5B20L59209	N		•
7	MBQ80SYNOK4405U4GDISNFPOLNBTN	5B20L59252	N		•
7	MBQ80SYWIN4405U4GDISNFPOLNBTN	5B20L59284	N		•
7	MBQ80SYNOK 4405U4GDISNFPOLBTN	5B20L59388	N		•
7	MBQ80SYWIN 4405U4GDISNFPOLBTN	5B20L59423	N		•
7	MBQ80SYNOK 4405U 4GUMAFPOLBTN	5B20L59336	N		•
7	MBQ80SYWIN 4405U 4GUMAFPOLBTN	5B20L59494	N		•
7	MBQ80SYNOK4405U4GUMANFPOLNBTN	5B20L59299	N		•
7	MBQ80SYWIN4405U4GUMANFPOLNBTN	5B20L59541	N		•
7	MBQ80SYNOK 4405U4GUMANFPOLBTN	5B20L59251	N		•
7	MBQ80SYWIN 4405U4GUMANFPOLBTN	5B20L59419	N		•
7	MBQ80SYNOKI36100U4GDISFPOLBTN	5B20L59431	N		•
7	MBQ80SYWINI36100U4GDISFPOLBTN	5B20L59242	N		•
7	MBQ80SYNOKI36100U4GDISNFPOLNBT	5B20L59534	N		•
7	MBQ80SYWINI36100U4GDISNFPOLNBT	5B20L59257	N		•
7	MBQ80SYNOKI36100U4GDINFPOLBTN	5B20L59484	N		•
7	MBQ80SYWINI36100U4GDINFPOLBTN	5B20L59233	N		•
7	MBQ80SYNOKI36100U4GUMAFPOLBTN	5B20L59457	N		•
7	MBQ80SYWINI36100U4GUMAFPOLBTN	5B20L59232	N		•

Lenovo V310-14ISK/Lenovo V310-15ISK Hardware Maintenance Manual

Table 5. Parts list—Overall (continued)

No.	FRU	FRU no.	CRU ID.	Lenovo V310-14ISK	Lenovo V310-15ISK
7	MBQ80SYNOKI36100U4GUMANFNOLNBT	5B20L59229	N		•
7	MBQ80SYWINI36100U4GUMANFNOLNBT	5B20L59215	N		•
7	MBQ80SYNOKI36100U4GUMNFPNOLBTN	5B20L59387	N		•
7	MBQ80SYWINI36100U4GUMNFPNOLBTN	5B20L59466	N		•
7	MBQ80SYNOKI56200U4GDISFPNOLBTN	5B20L59379	N		•
7	MBQ80SYWINI56200U4GDISFPNOLBTN	5B20L59335	N		•
7	MBQ80SYNOKI56200U4GDISNFNOLNBT	5B20L59530	N		•
7	MBQ80SYWINI56200U4GDISNFNOLNBT	5B20L59173	N		•
7	MBQ80SYNOKI56200U4GDINFPNOLBTN	5B20L59459	N		•
7	MBQ80SYWINI56200U4GDINFPNOLBTN	5B20L59463	N		•
7	MBQ80SYNOKI56200U4GUMAFPNOLBTN	5B20L59308	N		•
7	MBQ80SYWINI56200U4GUMAFPNOLBTN	5B20L59393	N		•
7	MBQ80SYNOKI56200U4GUMANFNOLNBT	5B20L59350	N		•
7	MBQ80SYWINI56200U4GUMANFNOLNBT	5B20L59311	N		•
7	MBQ80SYNOKI56200U4GUMNFPNOLBTN	5B20L59292	N		•
7	MBQ80SYWINI56200U4GUMNFPNOLBTN	5B20L59424	N		•
7	MBQ80SYNOKI56267U4GDISFPNOLBTN	5B20L59528	N		•
7	MBQ80SYWINI56267U4GDISFPNOLBTN	5B20L59227	N		•
7	MBQ80SYNOKI56267U4GDISNFNOLNBT	5B20L59267	N		•
7	MBQ80SYWINI56267U4GDISNFNOLNBT	5B20L59291	N		•
7	MBQ80SYNOKI56267U4GDINFPNOLBTN	5B20L59473	N		•
7	MBQ80SYWINI56267U4GDINFPNOLBTN	5B20L59510	N		•
7	MBQ80SYNOKI56267U4GUMAFPNOLBTN	5B20L59411	N		•
7	MBQ80SYWINI56267U4GUMAFPNOLBTN	5B20L59339	N		•
7	MBQ80SYNOKI56267U4GUMANFNOLNBT	5B20L59365	N		•
7	MBQ80SYWINI56267U4GUMANFNOLNBT	5B20L59446	N		•
7	MBQ80SYNOKI56267U4GUMNFPNOLBTN	5B20L59501	N		•
7	MBQ80SYWINI56267U4GUMNFPNOLBTN	5B20L59294	N		•
7	MBQ80SYNOKI76500U4GDISFPNOLBTN	5B20L59522	N		•
7	MBQ80SYWINI76500U4GDISFPNOLBTN	5B20L59462	N		•
7	MBQ80SYNOKI76500U4GDISNFNOLNBT	5B20L59321	N		•
7	MBQ80SYWINI76500U4GDISNFNOLNBT	5B20L59323	N		•
7	MBQ80SYNOKI76500U4GDINFPNOLBTN	5B20L59402	N		•
7	MBQ80SYWINI76500U4GDINFPNOLBTN	5B20L59262	N		•
7	MBQ80SYNOKI76500U4GUMAFPNOLBTN	5B20L59477	N		•
7	MBQ80SYWINI76500U4GUMAFPNOLBTN	5B20L59329	N		•
7	MBQ80SYNOKI76500U4GUMANFNOLNBT	5B20L59282	N		•
7	MBQ80SYWINI76500U4GUMANFNOLNBT	5B20L59236	N		•
7	MBQ80SYNOKI76500U4GUMNFPNOLBTN	5B20L59433	N		•
7	MBQ80SYWINI76500U4GUMNFPNOLBTN	5B20L59367	N		•
7	MBQ80SYNOKI76567U4GDISFPNOLBTN	5B20L59282	N		•
7	MBQ80SYWINI76567U4GDISFPNOLBTN	5B20L59404	N		•
7	MBQ80SYNOKI76567U4GDISNFNOLNBT	5B20L59364	N		•
7	MBQ80SYWINI76567U4GDISNFNOLNBT	5B20L59197	N		•
7	MBQ80SYNOKI76567U4GDINFPNOLBTN	5B20L59458	N		•
7	MBQ80SYWINI76567U4GDINFPNOLBTN	5B20L59231	N		•
7	MBQ80SYNOKI76567U4GUMAFPNOLBTN	5B20L59378	N		•
7	MBQ80SYWINI76567U4GUMAFPNOLBTN	5B20L59222	N		•

Table 5. Parts list—Overall (continued)

No.	FRU	FRU no.	CRU ID.	Lenovo V310-14ISK	Lenovo V310-15ISK
7	MBQ80SYNOKI76567U4GUMANFNOLNBT	5B20L59382	N		●
7	MBQ80SYWINI76567U4GUMANFNOLNBT	5B20L59224	N		●
7	MBQ80SYNOKI76567U4GUMNFPNOLBTN	5B20L59325	N		●
7	MBQ80SYWINI76567U4GUMNFPNOLBTN	5B20L59540	N		●
8	RTC Battery Q 80SY	5B10L46577	N	●	●
9	USB Board Q 80SX W/Cable	5C50L59253	N	●	
9	USB Board Q 80SY W/Cable	5C50L59496	N		●
10	ODD Board Q 80SY W/Cable	5C50L59207	N	●	●
11	ODD, HLDS GUEON 9.0mm Slim Tray Rambo ODD	5DX0J46488	*	●	●
11	ODD, PLDS DA-8AESH 9.0mm Slim Tray Rambo ODD	5DX0L08424	*	●	●
11	ODD, TSST SU-228HB 9.0mm Slim Tray Rambo ODD	5DX0L08425	*	●	●
11	ODD, Dummy ODD Black	SMC0L12785	*	●	●
11	Dummy ODD Q 80SY WO/BTN	5M20L47764	*		●
11	Dummy ODD Q 80SX WO/BTN	5M20L47762	*	●	
12	Thermal Module Q 80SY DIS W/Fan	5H40L46722	N	●	●
12	Thermal Module Q 80SY UMA W/Fan	5H40L46632	N	●	●
13	Intel 3165 1x1AC+BT PCIE M.2 WLAN	SW10H24486	N	●	●
13	Ltn NFA435 1x1AC+BT.0 PCIE M.2 WLAN	SW10A11641	N	●	●
13	Cbt RTL8821AE 1x1AC+BT.4.0 PCIE M.2 WLAN	SW10A11648	N	●	●
14	RAM, 2GB D4 S M471A5644EB0-CPB	5M30K59788	N	●	●
14	RAM, 2GB D4 S HMA425S6AFR6N-TFNO	5M30K59787	N	●	●
14	RAM, 4GB D4 S M471A5143EB0-CPB	5M30K59778	N	●	●
14	RAM, 4GB D4 S MTA8ATF51264HZ-2G1A2	5M30K59777	N	●	●
14	RAM, Hynix HMA451S6AFR8N-TFNO	5M30H35732	N	●	●
14	RAM, 4GB D4 S RMSA3230KE68H9F-2133	5M30K62038	N	●	●
15	HDD, ST500LT012 6G 7mm 5.4K 500G HDD	16200383	N	●	●
15	HDD, HTS545050A7E660 6G 7mm 5.4K 500G HDD	5H20H14223	N	●	●
15	HDD, MQ01ABF050 6G 7mm 5.4K 500G HDD	16200433	N	●	●
15	HDD, WD WD5000LPCX-24VHAT0 7mm 5400rpm 500G HDD	5H20J35762	N	●	●
15	HDD, ST1000LM024 6G 9.5mm 5.4K 1T HDD	16200385	N	●	●
15	HDD, HTS541010A9E660 6G 9.5mm 5.4K 1T HDD	16200400	N	●	●
15	HDD, TSB MQ01ABD100 6G 9.5mm 5.4K 1T HDD	16200429	N	●	●
15	HDD, WD10JPCX-24UE4T0 6G 9.5mm 5.4K 1T HDD	16200393	N	●	●
15	SSD, CV3-8D128 M.2 2280128G SSD	5SD0L02318	N	●	●
15	SSD, CV1-8B128 128GB M.2 SSD	5SD0J21066	N	●	●
15	SSD, MZNLN128HCGR M.2 128GB SSD	5SD0H00094	N	●	●
15	SSD, HFS128G39MNC-3310A M.2 128GB SSD	5SD0H43484	N	●	●
15	SSD, MZNTY128HDHP-000L2 M.2 128G SSD	5SD0L14643	N	●	●
15	SSD, HFS128G39TND-N210A M.2 128GB SSD	5SD0L07408	N	●	●
15	SSD, ST500LM000 6G 7mm 500G+8G SSHD	5H20H24608	N	●	●
15	SSD, Toshiba MQ02ABF050H 7mm 5.4k 500GB+8GB SSHD	5H20H12631	N	●	●
16	Battery, V310 CP/L L15C4A02 14.4V32Wh4cell bty	5B10L04163	N	●	●
16	Battery, V310 LG L15L4A02 14.4V32Wh4cell bty	5B10L04164	N	●	●
16	Battery, V310 SY L15S4A02 14.4V32Wh4cell bty	5B10L04212	N	●	●
17	Lower Case Q 80SX BLK W/BTN	5CB0L46640	N	●	
17	Lower Case Q 80SX BLK WO/BTN	5CB0L46559	N	●	

// Lenovo V310-14ISK/Lenovo V310-15ISK Hardware Maintenance Manual

Table 5. Parts list—Overall (continued)

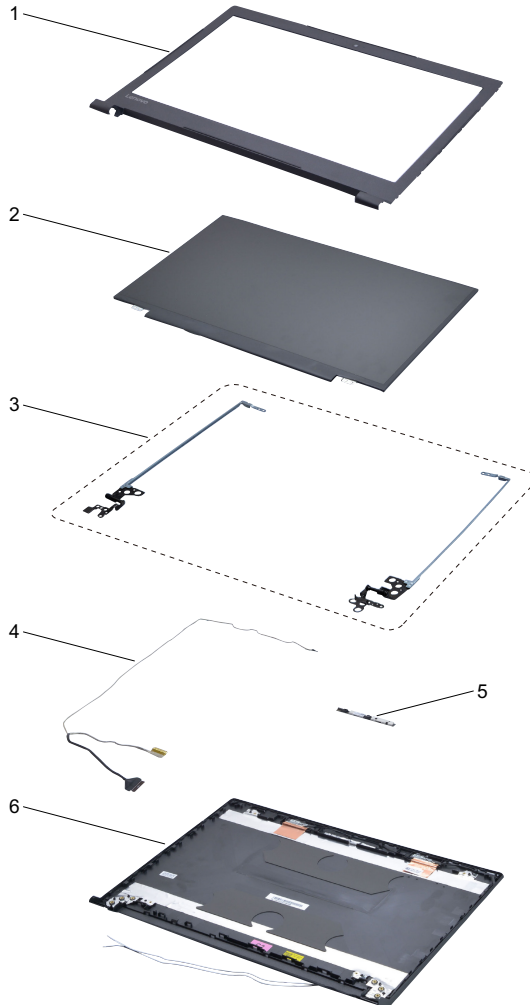
No.	FRU	FRU no.	CRU ID.	Lenovo V310-14ISK	Lenovo V310-15ISK
17	Lower Case Q 80SY BLK OL W/BTN	5CB0L46661	N		●
17	Lower Case Q 80SY BLK NOL W/BTN	5CB0L46562	N		●
17	Lower Case Q 80SY BLK OL WO/BTN	5CB0L46721	N		●
17	Lower Case Q 80SY BLK NOL WO/BTN	5CB0L46604	N		●
18	2nd Battery, V310 CP/C L15C2P01 7.6V35Wh2cell bty	5B10L04162	*	●	●
18	2nd Battery, V310 SY L15L2P01 7.6V35Wh2cell bty	5B10L04211	*	●	●
19	Second Battery Board Q 80SY	5C50L70682	N		●
—	AC adapter (see "AC adapters" on page 96).				

LCD FRUs

In Lenovo V310-14ISK/Lenovo V310-15ISK, there are following types of LCDs.

- “14.0-in. HD LED”

Lenovo V310-14ISK



- “15.6-in. HD LED”

Lenovo V310-15ISK

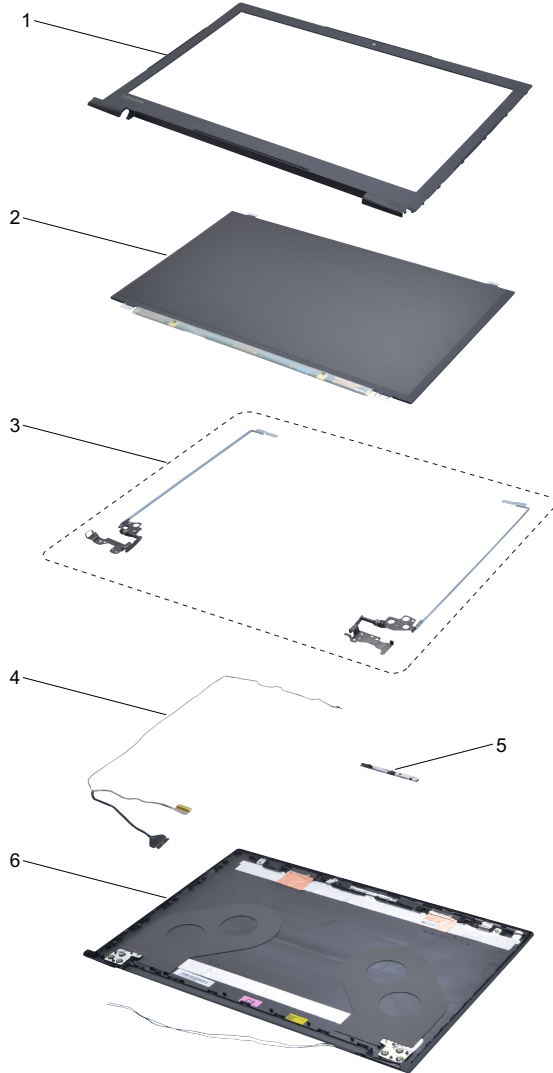


Table 6. Parts list—LCD FRUs

No.	FRU	FRU no.	CRU ID.	Lenovo V310-14ISK	Lenovo V310-15ISK
1	LCD Bezel Q 80SX BLK	5B30L46641	N	•	
1	LCD Bezel Q 80SY BLK	5B30L46622	N		•
2	LG LP140WHU-TPH1 HDT AG S NB	5D10K81464	N	•	
2	AUO B140XTN02.E HW0A HD AG S NB	5D10G95364	N	•	
2	IN N140BGA-EA3 HDT AG S NB	5D10K85755	N	•	
2	AU B140HTN01.E 2A FHDT AG S NB	5D10L08701	N	•	
2	IN N140HGE-EAA C4 FHDT AG S NB	5D10K93439	N	•	
2	LG LP156WHU-TPH1 HDT AG S NB	5D10K81461	N		•
2	INX N156BGA-EA2 HDT AG S NB	5D10K81086	N		•
2	SD LTN156AT38-402 HDT AG S NB	5D10K85103	N		•
2	AU B156HTN03.8 0C FHDT AG S NB	5D10L08702	N		•
2	IN N156HGA-EAB FHDT AG S NB	5D10K93435	N		•
3	Hinge Q 80SX L+R	5H50L46757	N	•	
3	Hinge Q 80SY L+R	5H50L46686	N		•
4	EDP Cable Q 80SX	5C10L59432	N	•	
4	EDP Cable Q 80SY	5C10L59211	N		•
5	Camera Q 80SY HD	5C20L46636	N	•	•
5	Camera Q 80SX 0.3	5C20L46663	N	•	•
6	LCD Cover Q 80SX BLK W/Antenna	5CB0L46733	N	•	
6	LCD Cover Q 80SY BLK W/Antenna	5CB0L46585	N		•

Miscellaneous parts

Table 7. Parts list—Miscellaneous parts

FRU	P/N	CRU ID.	Lenovo V310-14ISK	Lenovo V310-15ISK
System miscellaneous parts:				
• (a) FP Bracket Q 80SX	5B40L46598	N	•	
• (a) FP Bracket Q 80SY	5B40L46678	N		•
• (b) ODD Bracket Q 80SY	5B40L46747	N	•	•
• (c) ODD Latch Q 80SX	5L20L80882	N	•	•
• (d) ODD Bezel Q 80SX	5B30L46675	N	•	
• (d) ODD Bezel Q 80SY	5B30L46553	N		•
• (e) HDD Bracket Q 80SY	5B40L46564	N	•	•
• (g) SecondBattery Q 80SXBTN W/Bezel	5B10L72555	N	•	
• (g) SecondBatteryQ 80SXNBTN W/Bezel	5B10L72556	N	•	
• (g) SecondBattery Q 80SXBTN W/Bezel	5B10L72554	N		•
• (g) SecondBatteryQ 80SXNBTN W/Bezel	5B10L72557	N		•
Cable miscellaneous parts:				
• (f) DC-IN Cable Q 80SX	5C10L46579	N	•	
• (f) DC-IN Cable Q 80SY	5C10L46735	N		•

Note: Italicized letters in parentheses are references to the exploded view in “Overall” on page 76.

AC adapters

Table 8. Parts list—AC adapters

FRU	P/N	CRU ID.	Lenovo V310-14ISK	Lenovo V310-15ISK
Delta ADLX45NDC3A 20V2.25A adap DOE	5A10H03911	*	•	•
Liteon ADLX45DLC3A 20V2.25A adap DOE	5A10H03910	*	•	•
Chicony ADLX45NCC3A 20V2.25A adap DOE	5A10H03912	*	•	•
Acbel ADLX45NAC3A 20V2.25A adap	5A10K02213	*	•	•
Delta ADLX65NDC3A 20V3.25A BIS	5A10J46692	*	•	•
Liteon ADLX65NLC3A 20V3.25A AD BIS	5A10J75114	*	•	•
Chicony ADLX65NCC3A 20V3.25A AD BIS	5A10J75111	*	•	•

Screws

Table 9. Parts list—Screws

FRU	P/N	CRU ID.	Lenovo V310-14ISK	Lenovo V310-15ISK
Screw Pack Q 80SY	5S10L46682	N		•
Screw Pack Q 80SX	5S10L46659	N	•	

Power cords

A Lenovo power cord for a specific country or region is usually available only in that country or region:

Table 10. Parts list—3-pin power cords

Region	P/N	CRU ID.	Lenovo V310-14ISK	Lenovo V310-15ISK
UK 3pin • LINETEK LP-61L+ H03VV-F+ LS15 1m	145000593	*	•	•
UK 3pin • Longwell LP-61L+H03VV-F+LS-18 1m	145000561	*	•	•
UK 3pin • VOLEX MP5004+H03VV-F+VAC5S 1m	145000605	*	•	•
UK 3pin • lux 0031+H03VV-F 0.75/3C+0011 1m	145500000	*	•	•
Europe 3pin • LINETEK LP-34+H03VV-F + LS15 1m	145000585	*	•	•
Europe 3pin • Longwell LP-34A+H03VV-F+LS-18 1m	145000553	*	•	•
Europe 3pin • VOLEX M2511+HO3VV-F+VAC5S 1m	145000525	*	•	•
Europe 3pin • lux 0033+H03VV-F 0.75/3C+0011 1m	145500001	*	•	•
US 3pin • LINETEK LP-30B + SPT-2 + LS15 1m	145000594	*	•	•
US 3pin • Longwell LP-30B+SPT-2 18AWG+LS-18 1m	145000562	*	•	•
US 3pin • Volex US15S3+SPT-2+VAC5S 1m	145000537	*	•	•
US 3pin • lux 0014+SPT-2 60°C 18/3C+0016 1m	145500002	*	•	•
China 3pin • LINETEK PC323+RVV300/300+LS15 1m	145000600	*	•	•
China 3pin • Longwell LSG-31+RVV300/300+LS-18 1m	145000568	*	•	•
China 3pin • VOLEX GB10S3+RVV 300/500+VAC5S 1m	145000538	*	•	•
China 3pin • lux 0036+RVV 300/300 0.75/3C+0002 1m	145500003	*	•	•
India 3pin • LINETEK PE-361+ H05VV-F+ LS15 1m	145000592	*	•	•
India 3pin • Longwell LP-67+BIS+LS-18 1m	145000560	*	•	•
India 3pin • VOLEX IA6A3+IS694+VAC5S 1m	145000536	*	•	•
India 3pin • lux 0046+IS694 0.75/3C+0011 1m	145500004	*	•	•
Japan 3pin • LINETEK LS15+VCTF+LP-54 1m	145000587	*	•	•

Lenovo V310-14ISK/Lenovo V310-15ISK Hardware Maintenance Manual

Table 10. Parts list—3-pin power cords (continued)

Region	P/N	CRU ID.	Lenovo V310-14ISK	Lenovo V310-15ISK
Japan 3pin • Longwell LP-54+VCTF+LS-18 1m	145000555	*	•	•
Japan 3pin • VOLEX VAC5S+VCTF+M755 1m	145000530	*	•	•
Japan 3pin • lux 0018(E)+VCTF 0.75/3C+0021 1m	145500005	*	•	•
Australia 3pin • LINETEK LS15+H03VV-F+LP-23A 1m	145000589	*	•	•
Australia 3pin • Longwell LP-23A+LFC-3R+LS-18 1m	145000557	*	•	•
Australia 3pin • VOLEX AU10S3+H03VV-F+VAC5S 1m	145000532	*	•	•
Australia 3pin • lux 0038+H03VV-F 0.75/3C+0011 1m	145500006	*	•	•
Taiwan 3pin • LINETEK LS15+VCTF+LP-53 1m	145000588	*	•	•
Taiwan 3pin • Longwell LP-71+VCTF+LS-33 1m	145000556	*	•	•
Taiwan 3pin • VOLEX TW15CS3+VCTF+VAC5S 1m	145000531	*	•	•
Taiwan 3pin • lux 0019+VCTF 0.75/3C+0021 1m	145500007	*	•	•
Korea 3pin • LINETEK LS15+H05VV-F+LP-E04A 1m	145000590	*	•	•
Korea 3pin • Longwell LP-486+KTLH03VV-F+LS-5 1m	145000558	*	•	•
Korea 3pin • VOLEX M2511+KETI IEC+VAC5S 1m	145000533	*	•	•
Korea 3pin • lux 0033+H03VV-F 0.75/3C+0011 1m	145500008	*	•	•
Italy 3pin • LINETEK LS15+H03VV-F+PE-336 1m	145000591	*	•	•
Italy 3pin • Longwell LP-22+H03VV-F+LS-18 1m	145000559	*	•	•
Italy 3pin • VOLEX IT10S3+H03VV-F+VAC5S 1m	145000535	*	•	•
Italy 3pin • lux 0029+H03VV-F 0.75/3C+0011 1m	145500009	*	•	•
South Africa 3pin • LINETEK LS15+H03VV-F+PE-364 1m	145000586	*	•	•
South Africa 3pin • Longwell LP-39+H03VV-F+LS-18 1m	145000554	*	•	•
South Africa 3pin • lux 0044+H03VV-F 0.75/3C+0011 1m	145500010	*	•	•
Brazil 3pin • LINETEK LS15 H03VV-F LP26A 1m	145000596	*	•	•

Table 10. Parts list—3-pin power cords (continued)

Region	P/N	CRU ID.	Lenovo V310-14ISK	Lenovo V310-15ISK
Brazil 3pin • Longwell LP-46+H03VV-F+LS-18 1m	145000564	*	•	•
Brazil 3pin • VOLEX CH10S3+H03VV-F+VAC5S 1m	145000527	*	•	•
Brazil 3pin • lux 0034+H03VV-F 0.75/3C+0011 1m	145500011	*	•	•
Israel 3pin • LINETEK LS15+H03VV-F+LP-41 1m	145000595	*	•	•
Israel 3pin • Longwell LP-41+H03VV-F+LS-18 1m	145000563	*	•	•
Israel 3pin • VOLEX SI16S3+H03VV-F+VAC5S 1m	145000526	*	•	•
Israel 3pin • lux 0041+H03VV-F 0.75/3C+0011 1m	145500012	*	•	•
Switzerland 3pin • LINETEK LS15+H03VV-F+LP-37 1m	145000597	*	•	•
Switzerland 3pin • Longwell LP-37+H03VV-F+LS-18 1m	145000565	*	•	•
Switzerland 3pin • VOLEX MP232+H03VV-F+VAC5S 1m	145000524	*	•	•
Switzerland 3pin • lux 0027+H03VV-F 0.75/3C+0011 1m	145500013	*	•	•
Denmark 3pin • LINETEK LS15+H03VV-F+LP-38 1m	145000598	*	•	•
Denmark 3pin • Longwell LP-40+H03VV-F+LS-18 1m	145000566	*	•	•
Denmark 3pin • VOLEX MP233D+H03VV-F+VAC5S 1m	145000534	*	•	•
Denmark 3pin • lux 0048+H03VV-F 0.75/3C+0011 1m	145500014	*	•	•
Thailand 3pin • lux 0014+H03VV-F 0.75/3C+0011 1m	5L60J33143	*	•	•
Argentina 3pin • LINETEK LS15+H03VV-F+LP39 1m	145000599	*	•	•
Argentina 3pin • Longwell LP-24+H03VV-F+LS-18 1m	145000567	*	•	•
Argentina 3pin • VOLEX VA2073+H03VV-F+VAC5S 1m	145000528	*	•	•
Argentina 3pin • lux 0040+H03VV-F 0.75/3C+0011 1m	145500015	*	•	•

Notices

Lenovo may not offer the products, services, or features discussed in this document in all countries. Consult your local Lenovo representative for information on the products and services currently available in your area. Any reference to a Lenovo product, program, or service is not intended to state or imply that only that Lenovo product, program, or service may be used. Any functionally equivalent product, program, or service that does not infringe any Lenovo intellectual property right may be used instead. However, it is the user's responsibility to evaluate and verify the operation of any other product, program, or service.

Lenovo may have patents or pending patent applications covering subject matter described in this document. The furnishing of this document does not give you any license to these patents.

LENOVO GROUP LTD. PROVIDES THIS PUBLICATION "AS IS" WITHOUT WARRANTY OF ANY KIND, EITHER EXPRESS OR IMPLIED, INCLUDING, BUT NOT LIMITED TO, THE IMPLIED WARRANTIES OF NON-INFRINGEMENT, MERCHANTABILITY OR FITNESS FOR A PARTICULAR PURPOSE. Some jurisdictions do not allow disclaimer of express or implied warranties in certain transactions, therefore, this statement may not apply to you.

This information could include technical inaccuracies or typographical errors. Changes are periodically made to the information herein; these changes will be incorporated in new editions of the publication. Lenovo may make improvements and/or changes in the product(s) and/or the program(s) described in this publication at any time without notice.

The products described in this document are not intended for use in implantation or other life support applications where malfunction may result in injury or death to persons. The information contained in this document does not affect or change Lenovo product specifications or warranties. Nothing in this document shall operate as an express or implied license or indemnity under the intellectual property rights of Lenovo or third parties. All information contained in this document was obtained in specific environments and is presented as an illustration. The result obtained in other operating environments may vary.

Lenovo may use or distribute any of the information you supply in any way it believes appropriate without incurring any obligation to you.

Any references in this publication to non-Lenovo Web sites are provided for convenience only and do not in any manner serve as an endorsement of those Web sites. The materials at those Web sites are not part of the materials for this Lenovo product, and use of those Web sites is at your own risk.

Any performance data contained herein was determined in a controlled environment. Therefore, the result obtained in other operating environments may vary significantly. Some measurements may have been made on development-level systems and there is no guarantee that these measurements will be the same on generally available systems. Furthermore, some measurements may have been estimated through extrapolation. Actual results may vary. Users of this document should verify the applicable data for their specific environment.

Trademarks

The following terms are trademarks or registered trademarks of Lenovo in the United States, other countries, or both.

Lenovo
OneKey

Microsoft and Windows are trademarks of Microsoft Corporation in the United States, other countries, or both.

Other company, products, or service names may be trademarks or service marks of others.