



# Safety, Warranty, and Setup Guide

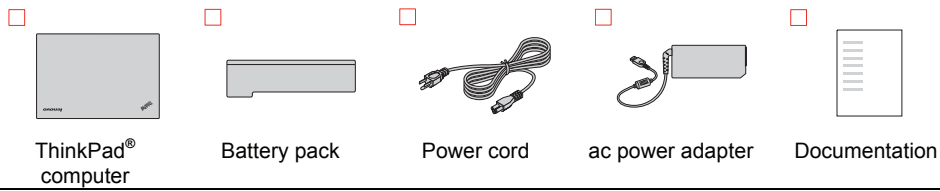
Brief user notices  
ThinkPad X240  
<http://www.lenovo.com/support>

## Lenovo® electronic manuals... for a greener planet!

Refer to the electronic *User Guide* for detailed product information:  
<http://www.lenovo.com/UserManuals>



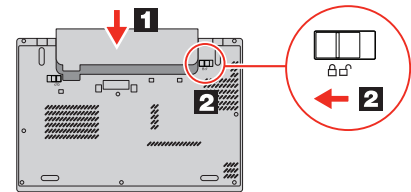
## Unpack



**Note:** Recovery discs are not provided. Instead, everything needed for recovering factory-installed files and applications is provided in the Lenovo\_Recovery partition on your hard disk drive. If you decide to remove the Lenovo\_Recovery partition, be sure to create a recovery disc first. For more information, see "Recovery overview" in the *User Guide*. See "Accessing your *User Guide*" for instructions on opening the electronic *User Guide* provided on your computer.

## Initial setup instructions

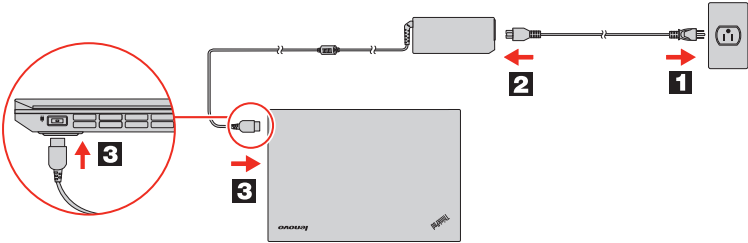
**1.** Install the external battery pack.



This system supports only batteries specially designed for this specific system and manufactured by Lenovo or an authorized builder. The system does not support unauthorized batteries or batteries designed for other systems. If an unauthorized battery or a battery designed for another system is installed, the system will not charge.

**Attention:** Lenovo has no responsibility for the performance or safety of unauthorized batteries, and provides no warranties for failures or damage arising out of their use.

**2.** Connect to power. Ensure that all power cord connectors are securely and completely plugged into receptacles.



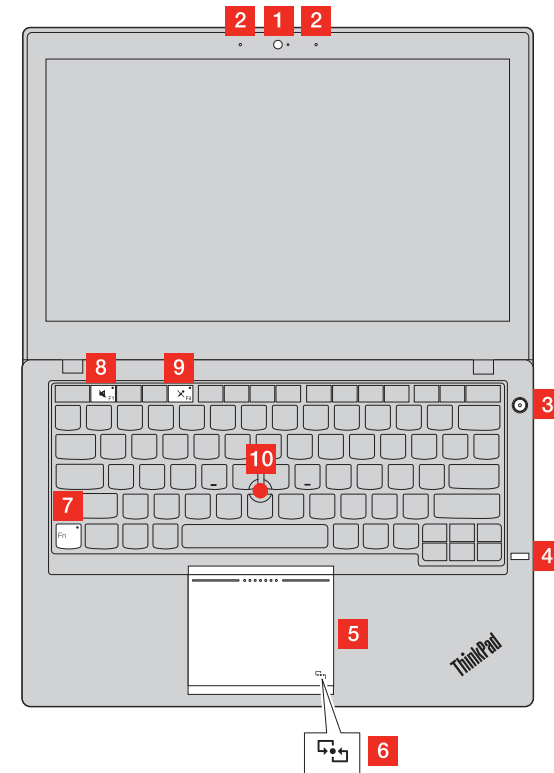
**3.** Press the power button to turn on the computer.

**4.** Configure the operating system following the on-screen instructions to complete the initial setup. This process takes several minutes.

Additional information about using your ThinkPad computer is in the *User Guide*. See "Accessing your *User Guide*" later in this document.

## Controls and indicators

- 1** Camera (on some models)
- 2** Microphones
- 3** Power button
- 4** Fingerprint reader (on some models)
- 5** ThinkPad trackpad
- 6** Near Field Communication (NFC) logo (on some models)
- 7** Fn key with the Fn Lock indicator
- 8** F1 key with the speaker mute indicator
- 9** F4 key with the microphone mute indicator
- 10** TrackPoint® pointing stick



## Accessing your User Guide

Your *User Guide* contains detailed information about your computer. To access your *User Guide*, do the following:

### Microsoft® Windows® 8.1 operating system:

- Method 1**
  1. Go to the Start screen.
  2. Click the arrow icon in the bottom-left corner of the screen to go to the Apps screen. If you are using a touch screen, swipe up to go to the Apps screen.
  3. Scroll to the right side of the screen, and click or tap **Help and Support**. The Windows Help and Support window opens.
  4. Click or tap **Lenovo User Guide**.

### Method 2

1. Go to the Start screen.
2. Click or tap **Lenovo Support**. The Lenovo Support window opens.
3. Click or tap **User Guide**.

### Windows 8:

#### From the desktop or the Start screen

1. Move the cursor to the top-right or bottom-right corner of the screen to display the charms, and then click **Search**. If you are using a touch screen, swipe in from the right edge of the screen to display the charms, and then tap **Search**.
2. From the Apps screen, click or tap **Lenovo User Guide**.

#### From the Start screen

1. Click or tap **Lenovo Support**. The Lenovo Support window opens.
2. Click or tap **User Guide**.

### Windows 7:

1. From the Windows desktop, click **Start** and then click **Help and Support**. The Windows Help and Support window opens.
2. Click **Lenovo User Guide**.

## Read before using your computer



The following sections provide critical safety and regulatory information for Lenovo computers and instructions on how to access electronic versions of the publications developed for your computer.

### Read first — regulatory information

Computer models equipped with wireless communications comply with the radio frequency and safety standards of any country or region in which it has been approved for wireless use. In addition, if your product contains a telecom modem, it complies with the requirements for connection to the telephone network in your country.

Be sure to read the *Regulatory Notice* for your country or region before using the wireless devices contained in your computer. To obtain a PDF version of the *Regulatory Notice*, refer to the "Downloading publications" section below.

### Downloading publications

Electronic versions of your computer publications are available from the Lenovo Support Web site. To download the publications for your

computer, go to <http://www.lenovo.com/ThinkPadUserGuides> and follow the instructions on the screen.

## Service and Support information

The following information describes the technical support that is available for your product, during the warranty period or throughout the life of your product. Refer to the *Lenovo Limited Warranty notice* later in this document for details on accessing the full warranty.

If you purchased Lenovo services, refer to the following terms and conditions for detailed information:

- **For Lenovo Warranty Service Upgrades or Extensions, go to:** <http://support.lenovo.com/lwsu>
- **For Lenovo Accidental Damage Protection Services, go to:** <http://support.lenovo.com/ladps>

### Online technical support

Online technical support is available during the lifetime of a product at <http://www.lenovo.com/support>.

### Telephone technical support

You can get help and information from the Customer Support Center by telephone. Before contacting a Lenovo technical support representative, have the following information available: model and serial number, the exact wording of any error message, and a description of the problem.

Your technical support representative might want to walk you through the problem while you are at your computer during the call.

### Worldwide Lenovo Support telephone list

**Important:** Telephone numbers are subject to change without notice. The most up-to-date telephone list for the Customer Support Center is always available at <http://www.lenovo.com/support/phone>.

If the telephone number for your country or region is not listed, contact your Lenovo reseller or Lenovo marketing representative.

Country or region	Telephone number
Africa	South Africa: 0800110756 (English, Afrikaans) Central Africa: Contact the nearest Lenovo Business Partner
Algeria	+33 6 7348 1739 (French, English)
Argentina	0800-866-0011 (Spanish)
Australia	1800 041 267 (English)
Austria	01-24592-5901 (German)
Bahrain	Kanoo IT: 00 973 1771 1722 Bahrain Business Machine LLC: 00 973 1758 4302
Belgium	+32 (0)2 339 3611 (Warranty service and support) (Dutch, French)
Bolivia	0800-10-0189 (Spanish)
Brazil	Calls made from within the Sao Paulo region: (11) 3889-8986 Calls made from outside the Sao Paulo region: 0800-701-4815 (Brazilian Portuguese)
Brunei	Dial 800-1111, then dial 866-273-5446 (English and Bahasa Melayu)
Canada	1-800-565-3344 (English, French)
Caribbean (Bermuda, Jamaica, Tortola)	1-800 426 7378 (English)
Chile	800-361-213 (Spanish)
China	Technical Support Line 800-990-8888; 86-10-59851110 (Mandarin)
Colombia	1-800-912-3021 (Spanish)
Costa Rica	0-800-011-1029 (Spanish)
Croatia	0800-0426, +385 1 6110095 (calls out side of Croatia)
Cyprus	80092537 (Greek)
Czech Republic	800-353-637
Denmark	4520-8200

Country or region	Telephone number
Dominican Republic	7010-5150 (Warranty service and support) (Danish) 1-866-434-2080 (Spanish)
Ecuador	1-800-426911 OPCION 4 (Spanish)
Egypt	800-0000-418 (Toll free) 002-02-2594-8500 (Standard charges apply) (English, Arabic)
El Salvador	800-6264 (Spanish)
Estonia	+372 66 00 800, +372 6776793
Finland	09-459-6960 358-800-1-4260 (Warranty service and support) (Finnish)
France	Hardware: 0810-631-213 (Warranty service and support) (French)
Germany	0800-5004618 (Gebührenfrei) (Garantieservice und Support)
Greece	Contact the nearest Lenovo Business Partner
Guatemala	1800-624-0051 (Spanish)
Honduras	Teguigalpa: 232-4222 San Pedro Sula: 552-2234 (Spanish)
Hong Kong	(852) 3071-3561 (Cantonese, English, Mandarin)
Hungary	+36 1 3825716 +36 1 3825720 (English, Hungarian)
India	1800 3000 THINK (1800 3000 8465) (Reliance) 1800-418-4666 (Tata) Email: <a href="mailto:Commercialts@lenovo.com">Commercialts@lenovo.com</a> (English and Hindi)
Indonesia	001-803-442-425 (English, Bahasa Indonesia)
Ireland	01-881-1444 (Warranty service and support) (English)
Israel	Givat Shmuel Service Center: +972-3-531-3900 (Hebrew and English)
Italy	39-800-820094 (Warranty service and support) (Italian)
Jamaica	1-800 426 7378 (English)
Japan	0120-000-817 (Japanese, English)
Jordan	Jordan Business Systems: 00 962 5 5000999 (ext. 713/127) General Computer & Electronic (GCE): 00 962 6 551 3879 (English, Arabic)
Korea	080-513-0880 (Toll free) (Korean)
Kuwait	Easa Hussain Al Youisif: 00 965 2244 5280 AM, KHORAFI: 00 965 2200 1100 1127 Khorafi Business Machines (KBM): 00 965 2259 4611 Diyar United Company: 00 965 4378 383 Redington Kuwait: 00 965 2433 3203, 25456250 / 25456251
Latvia	+371 7070360
Lebanon	Quantech: 00 961 1999 500 Computer Business Machine (CBM): 00 961 1680 180 El Haceb S.A.L: 00 961 1771 300
Lithuania	+370 5 278 66 00
Libya	+33 6 7348 1739 (French, English)
Luxembourg	+352 360 385 222 (French)
Macau	0800-807 / (852) 3071-3559 (Cantonese, English, Mandarin)
Macedonia	1800-88-0013 (English, Bahasa Melayu)
Malaysia	1800-88-0013 (English, Bahasa Melayu)
Malta	+35621445566
Mexico	001-866-434-2080 (Spanish)
Middle East	+44 (0)1475-555-055
Morocco	+212 5 22 509035 +212 5 22 509017 (Arabic)
Netherlands	+31 (0)20 513 3939 (Dutch)
New Zealand	0508 770 506 (English)

Country or region	Telephone number
Nicaragua	001-800-220-1830 (Spanish)
Norway	8152-1550 (Warranty service and support) (Norwegian)
Oman	Khimji Ramdas Computer Communication Systems: 00 968 2469 6255 Overseas Business Machines (OBM): 00 968 2460 1072, 2460 5018 Gulf Business Machines Services (GBMS): 00 968 2455 9831
Pakistan	International Office Products (pvt) Ltd.: 00 92 212 422 569, 00 92 213 241 2023 Selling Business Systems: 00 92 21 568 9823
Panama	206-6047 001-866-434-2080 (Lenovo Customer Support Center - Toll free) (Spanish)
Paraguay	009-800-52-10026 (Spanish)
Peru	0-800-50-866 OPCION 2 (Spanish)
Philippines	180089086454 (GLOBE subscribers) 180014410719 (PLDT subscribers) (Tagalog, English)
Poland	+48 22 760 7300 (Polish)
Portugal	+351 21 892 7046 (Portuguese)
Qatar	Al Mana Computer Services: 00 974 4489 966 (ext. 1992) Qatar Computer Services W.L.L.: 00 974 4441 212 +4-021-224-4015
Romania	+4-021-224-4015
Russia	8-800-555-0317 (Toll free number) (Russian, English)
Saudi Arabia	8008445128 (English, Arabic)
Singapore	1-800-818-5219 (English, Mandarin, Bahasa Malaysia)
Slovakia	+421 2 4974 8888
Slovenia	+386-1-200-50-60 (Slovenian)
Spain	+34 91-714-7983 (Spanish)
Sri Lanka	+9411 2493547, +9411 2493548 (English)
Sweden	08-477-4420 077-117-1040 (Warranty service and support) (Swedish)
Switzerland	0800-55-54-54 (Warranty service and support) (German, French, Italian)
Taiwan	0800-000-702 (Mandarin)
Thailand	001 800 4415 734 (Thai, English)
Turkey	0212 338 03 66 0800 448 825 165 (Turkce) (Turkish)
Ukraine	044 362 42 81 (Standard Charges Apply) (Ukrainian, Russian, English)
United Arab Emirates	800 04447023 (English, Arabic)
United Kingdom	08705-500-900 (Standard warranty support) (English)
United States	1-800-426-7378 (English)
Uruguay	000-411-005-6649 (Spanish)
Venezuela	0-800-100-2011 (Spanish)
Vietnam	120-11072 (Toll Free) +(84) 8 3521 8000 (Standard Charges Apply) (Vietnamese, English)
Yemen	Al Khirash and Agencies: 00 967 1209 8278 Yemen Business Machines (YBM): 00-967 3 213324, 00-967 3 214655, 00-967 3 213909



## Lenovo product service information for Taiwan

台灣 Lenovo 產品服務資訊如下：  
荷蘭商聯想股份有限公司台灣分公司  
台北市內湖區堤頂大道二段89號5樓  
服務電話：0800-000-702

## Safety information



This section contains important safety information for Lenovo products. Additional safety information is provided in the *User Guide* for your product. See "Accessing your *User Guide*" for additional information.

### Plastic bag notice

#### CAUTION:

Plastic bags can be dangerous. Keep plastic bags away from babies and children to avoid danger of suffocation.

### Rechargeable battery notice (for notebook computers)

#### DANGER

Do not attempt to disassemble or modify the battery pack. Attempting to do so can cause an explosion, or liquid leakage from the battery pack. A battery pack other than the one specified by Lenovo, or a disassembled or modified battery pack is not covered by the warranty.

If the rechargeable battery pack is incorrectly replaced, there is danger of an explosion. The battery pack contains a small amount of harmful substances. To avoid possible injury:

- Replace only with a battery of the type recommended by Lenovo.
- Keep the battery pack away from fire.
- Do not expose it to water or rain.
- Do not attempt to disassemble it.
- Do not short-circuit it.
- Keep it away from children.
- Do not drop the battery pack.

Do not put the battery pack in trash that is disposed of in landfills. When disposing of the battery, comply with local ordinances or regulations.

The battery pack should be stored at room temperature, charged to approximately 30 to 50% of capacity. We recommend that the battery pack be charged about once per year to prevent overdischarge.

### Built-in rechargeable battery notice

#### DANGER

Do not attempt to replace the internal rechargeable lithium batteries. Contact Lenovo Support for factory replacement.

### Lithium coin-cell battery notice

#### DANGER

Danger of explosion if battery is incorrectly replaced.

When replacing the lithium coin-cell battery, use only the same or an equivalent type that is recommended by the manufacturer. The battery contains lithium and can explode if not properly used, handled, or disposed of.

- Do not:
- Throw or immerse into water
  - Heat to more than 100°C (212°F)
  - Repair or disassemble

Dispose of the battery as required by local ordinances or regulations.

The following statement applies to users in the state of California, U.S.A.

California Perchlorate Information:

Products containing manganese dioxide lithium coin-cell batteries may contain perchlorate.

Perchlorate Material - special handling may apply, See [www.dtsc.ca.gov/hazardouswaste/perchlorate](http://www.dtsc.ca.gov/hazardouswaste/perchlorate)

### Polyvinyl Chloride (PVC) cable and cord notice

**WARNING:** Handling the cord on this product or cords associated with accessories sold with this product will expose you to lead, a chemical known to the State of California to cause cancer, and birth defects or other reproductive harm. *Wash hands after handling.*

## Using headphones or earphones

#### CAUTION:

Excessive sound pressure from earphones and headphones can cause hearing loss. Adjustment of the equalizer to maximum increases the earphone and headphone output voltage and the sound pressure level. Therefore, to protect your hearing, adjust the equalizer to an appropriate level.

Excessive use of headphones or earphones for a long period of time at high volume can be dangerous if the output of the headphone or earphone connectors do not comply with specifications of EN 50332-2. The headphone output connector of your computer complies with EN 50332-2 Sub clause 7. This specification limits the computer's maximum wide band true RMS output voltage to 150 mV. To help protect against hearing loss, ensure that the headphones or earphones you use also comply with EN 50332-2 (Clause 7 Limits) or a wide band characteristic voltage of 75 mV. Using headphones that do not comply with EN 50332-2 can be dangerous due to excessive sound pressure levels.

If your Lenovo computer came with headphones or earphones in the package, as a set, the combination of the headphones or earphones and the computer already complies with the specifications of EN 50332-1. If different headphones or earphones are used, ensure that they comply with EN 50332-1 (Clause 6.5 Limitation Values). Using headphones that do not comply with EN 50332-1 can be dangerous due to excessive sound pressure levels.

## Lenovo Limited Warranty notice

This product is covered by the terms of the Lenovo Limited Warranty, version L505-0010-02 08/2011. Read the Lenovo Limited Warranty (LLW) at [http://www.lenovo.com/warranty/llw\\_02](http://www.lenovo.com/warranty/llw_02). You can view the LLW in a number of languages from this Web site. The LLW also is displayed on your computer during the initial setup. After the initial setup has completed, you can view the warranty on your computer by doing the following:

#### Windows 8.1:

##### Method 1

- Go to the Start screen.
- Click the arrow icon in the bottom-left corner of the screen to go to the Apps screen. If you are using a touch screen, swipe up to go to the Apps screen.
- Click or tap **Warranty Information**.

##### Method 2

- Go to the Start screen.
- Click or tap **Lenovo Support**. The Lenovo Support window opens.
- Click or tap **Service and Warranty**.

#### Windows 8:

##### From the desktop or the Start screen

- Move the cursor to the top-right or bottom-right corner of the screen to display the charms, and then click **Search**. If you are using a touch screen, swipe in from the right edge of the screen to display the charms, and then tap **Search**.
- From the Apps screen, click or tap **Warranty Information**.

##### From the Start screen

- Click or tap **Lenovo Support**. The Lenovo Support window opens.
- Click or tap **Service & Warranty**.

#### Windows 7:

From the Windows desktop, click **Start** → **All Programs** → **Lenovo Device Experience** → **Lenovo Warranty**.

If you cannot view the LLW either from the Web site or from your computer, contact your local Lenovo office or reseller to obtain a printed version of the LLW.

## Warranty Information

To check the warranty status of your computer, go to <http://www.lenovo.com/support>, click **Warranty & Services**, click **Check Warranty Status**, and then follow the instructions on the screen.

## Customer Replaceable Units

Customer Replaceable Units (CRUs) are parts that can be upgraded or replaced by the customer. If a CRU is determined to be defective during the warranty period, a replacement CRU will be provided to the customer. Customers are responsible for installing the self-service CRUs for this product. Customers also can install optional-service CRUs, which might require some technical skills or tools, or request that a technician install the optional-service CRU under the terms of the applicable warranty service type for your country or region. The following tables list CRUs for your computer and tell where to find the replacement instructions.

### Self-service CRUs

CRU	This setup sheet	User Guide
ac power adapter	X	X

Power cord for ac power adapter	X	X
TrackPoint cap		X
Battery pack		X

### Optional-service CRUs

CRU	This setup sheet	User Guide
Memory module		X
Hard disk drive or solid-state drive		X
Wireless LAN card		X
Wireless WAN card		X

CRU installation instructions are in the *User Guide* for the respective product. See "Accessing your *User Guide*" and "Downloading publications" for additional information.

## Electronic emission notices

This device has been tested and found to comply with the limits for a Class B digital device. The *User Guide* for this product provides the complete Class B compliance statements that are applicable for this device. See "Accessing your *User Guide*" for additional information.

## Korean Class B compliance statement

Б급 기기(가정용 방송통신기자재)
이 기기는 가정용(B급) 전자파적합기기로서 주로 가정에서 사용하는 것을 목적으로 하며, 모든 지역에서 사용할 수 있습니다.

## European Union conformity

EU contact: Lenovo, Einsteinova 21, 851 01 Bratislava, Slovakia



## Radio and Telecommunications Terminal Equipment Directive

This product is in compliance with the essential requirements and other relevant provisions of the Radio and Telecommunications Terminal Equipment Directive, 1999/5/EC. The Declaration of Conformity information is located in the *Regulatory Notice*, which you can download from the Lenovo Support Web site. See "Downloading publications" for additional information.

## Recycling and environmental information

Lenovo encourages owners of information technology (IT) equipment to responsibly recycle their equipment when it is no longer needed. Lenovo offers a variety of programs and services to assist equipment owners in recycling their IT products. For information on recycling Lenovo products, go to:

<http://www.lenovo.com/recycling>

### Important WEEE information

	Country-specific information is available at: <a href="http://www.lenovo.com/recycling">http://www.lenovo.com/recycling</a>
--	---

### Recycling information for Japan

日本でのリサイクルまたは廃棄についての詳細は、Web サイト <http://www.lenovo.com/recycling/japan> を参照してください。

### Recycling information for China

#### 《废弃电器电子产品回收处理管理条例》提示性说明

联想鼓励拥有联想品牌产品的用户当不再需要此类产品时，遵守国家废弃电器电子产品回收处理相关法律法规，将其交给当地具有国家认可的回收处理资质的厂商进行回收处理。更多回收服务信息，请点击进入 <http://support.lenovo.com.cn/activity/551.htm>。

### Additional recycling statements

Additional information about recycling computer components and batteries is in your *User Guide*. See "Accessing your *User Guide*" for details.

## Restriction of Hazardous Substances Directive (RoHS)

### European Union RoHS

Lenovo products sold in the European Union, on or after 3 January 2013 meet the requirements of Directive 2011/65/EU on the restriction of the use of certain hazardous substances in electrical and electronic equipment ("RoHS recast" or "RoHS 2").

For more information about Lenovo progress on RoHS, go to: [http://www.lenovo.com/social\\_responsibility/us/en/RoHS\\_Communication.pdf](http://www.lenovo.com/social_responsibility/us/en/RoHS_Communication.pdf)

## China RoHS

The information in the following table is applicable for products manufactured on or after March 1, 2007 for sale in the People's Republic of China.

产品中有毒有害物质或元素名称及含量

部件名称	有毒有害物质或元素					
	铅(Pb)	汞(Hg)	镉(Cd)	六价铬 (Cr(VI))	多溴联苯 (PBB)	多溴二苯醚 (PBDE)
印刷电路板组件*	X	0	0	0	0	0
硬盘	X	0	0	0	0	0
光驱	X	0	0	0	0	0
内存	X	0	0	0	0	0
电脑I/O附件	X	0	0	0	0	0
电源	X	0	0	0	0	0
键盘	X	0	0	0	0	0
鼠标	X	0	0	0	0	0
机箱/附件	X	0	0	0	0	0

○:表示该有毒有害物质在该部件所有均质材料中的含量均在SJ/T11363-2006标准规定的限量要求以下  
×:表示该有毒有害物质至少在该部件的某一均质材料中的含量超出SJ/T11363-2006标准规定的限量要求  
表中标有“×”的所有部件都符合欧盟RoHS法规。

印刷电路板组件\*: 包括印刷电路板及其零部件、电容和连接器  
根据型号的不同,可能不会含有以上的所有部件,请以实际购买机型为准

在中华人民共和国境内销售的电子信息产品必须标识此标志,标志内的数字代表在正常使用状态下的产品的环保使用期限

## Turkish RoHS

The Lenovo product meets the requirements of the Republic of Turkey Directive on the Restriction of the Use of Certain Hazardous Substances in Electrical and Electronic Equipment (EEE).

### Türkiye EEE Yönetmeliğine Uygunluk Beyanı

Bu Lenovo ürünü, T.C. Çevre ve Orman Bakanlığı'nın "Elektrik ve Elektronik Eşyalarda Bazı Zararlı Maddelerin Kullanımının Sınırlanılmasına Dair Yönetmelik (EEE)" direktiflerine uygundur.

EEE Yönetmeliğine Uygundur.

## Ukraine RoHS

Цим підтверджуємо, що продукція Леново відповідає вимогам нормативних актів України, які обмежують вміст небезпечних речовин

## India RoHS

RoHS compliant as per E-Waste (Management & Handling) Rules, 2011.

## Eurasian compliance mark



## California BC mark



## ENERGY STAR

	Select models conform to ENERGY STAR requirements. Additional ENERGY STAR information is in your <i>User Guide</i> . See "Accessing your <i>User Guide</i> ."
--	---

## Legal notices

Lenovo, For Those Who Do., the Lenovo logo, ThinkPad, and TrackPoint are trademarks of Lenovo in the United States, other countries, or both.

Microsoft and Windows are trademarks of the Microsoft group of companies.

Other company, product, or service names may be trademarks or service marks of others.

For additional legal notices, refer to the *User Guide* for your computer. See "Accessing your *User Guide*" for additional information.