

Lenovo
YOGA 720-12IKB
Hardware
Maintenance
Manual

Lenovo™

Note:

- Before using this information and the product it supports, be sure to read the general information under “Notices” on page 71.

First Edition (August 2017)

© Copyright Lenovo 2017. All rights reserved.

LIMITED AND RESTRICTED RIGHTS NOTICE: If data or software is delivered pursuant a General Services Administration “GSA” contract, use, reproduction, or disclosure is subject to restrictions set forth in Contract No. GS-35F-05925.

© 2017 Lenovo

Contents

About this manual	iv	1040 PCI Express Mini Card for wireless LAN	35
Safety information	1	1050 Speakers	37
General safety	2	1060 IO board	39
Electrical safety	3	1070 Fan and heat sink assembly	40
Safety inspection guide	5	1080 System board	42
Handling devices that are sensitive to electrostatic discharge	6	1090 Fingerprint module and DC-in cable	45
Grounding requirements	6	1100 LCD unit	46
Safety notices: multilingual translations	7	1110 LCD panel	47
Laser compliance statement	14	1120 EDP cable	50
Important service information	16	1130 Microphone board and camera board	52
Strategy for replacing FRUs	16	1140 LCD hinges	54
Strategy for replacing a hard disk drive	17	Locations	56
Important notice for replacing a system board	17	Front and right-side view	56
Important information about replacing RoHS compliant FRUs	18	Bottom and left-side view	57
General checkout	19	Parts list	58
What to do first	20	Overall	59
Power system checkout	21	LCD FRUs	64
Checking the AC adapter	21	Miscellaneous parts	65
Checking operational charging	22	AC adapters	66
Checking the battery pack	22	Screws	66
Related service information	23	Power cords	67
Restoring the factory contents by using recovery system	23	Notices	71
Restore of factory default	23	Trademarks	72
Passwords	24		
Power-on password	24		
Hard-disk password	24		
Supervisor password	24		
Power management	25		
Putting the computer to sleep or shutting it down	25		
Putting your computer to sleep	25		
Shutting down the computer	25		
Lenovo YOGA 720-12IKB	26		
Specifications	26		
Status indicators	27		
Keyboard function keys	28		
FRU replacement notices	29		
Screw notices	29		
Removing and replacing an FRU	30		
1010 Base cover	31		
1020 Battery pack	33		
1030 Solid state disk	34		

About this manual

This manual contains service and reference information for the following Lenovo product:

Lenovo YOGA 720-12IKB

Use this manual to troubleshoot problems.

The manual is divided into the following sections:

- The common sections provide general information, guidelines, and safety information required for servicing computers.
- The product-specific section includes service, reference, and product-specific parts information.

Important:

This manual is intended only for trained servicers who are familiar with Lenovo products. Use this manual to troubleshoot problems effectively.

Before servicing a Lenovo product, make sure to read all the information under “Safety information” on page 1 and “Important service information” on page 16.

Safety information

This chapter presents the following safety information that you need to get familiar with before you service a Lenovo YOGA 720-12IKB computer:

- “General safety” on page 2
- “Electrical safety” on page 3
- “Safety inspection guide” on page 5
- “Handling devices that are sensitive to electrostatic discharge” on page 6
- “Grounding requirements” on page 6
- “Safety notices: multilingual translations” on page 7
- “Laser compliance statement” on page 14

General safety

Follow these rules below to ensure general safety:

- Observe a good housekeeping in the area where the machines are put during and after the maintenance.
- When lifting any heavy object:
 1. Make sure that you can stand safely without slipping.
 2. Distribute the weight of the object equally between your feet.
 3. Use a slow lifting force. Never move suddenly or twist when you attempt to lift it.
 4. Lift it by standing or pushing up with your leg muscles; this action could avoid the strain from the muscles in your back. Do not attempt to lift any object that weighs more than 16 kg (35 lb) or that you think is too heavy for you.
- Do not perform any action that causes hazards to the customer, or that makes the machine unsafe.
- Before you start the machine, make sure that other service representatives and the customer are not in a hazardous position.
- Please remove covers and other parts in a safe place, away from all personnel, while you are servicing the machine.
- Keep your toolcase away from walk areas so that other people will not trip over it.
- Do not wear loose clothing that can be trapped in the moving parts of the machine. Make sure that your sleeves are fastened or rolled up above your elbows. If your hair is long, fasten it.
- Insert the ends of your necktie or scarf inside clothing or fasten it with the nonconductive clip, about 8 centimeters (3 inches) from the end.
- Do not wear jewelry, chains, metal-frame eyeglasses, or metal fasteners for your clothing.

Attention: Metal objects are good electrical conductors.
- Wear safety glasses when you are hammering, drilling, soldering, cutting wire, attaching springs, using solvents, or working in any other conditions that may be hazardous to your eyes.
- After service, reinstall all safety shields, guards, labels, and ground wires. Replace any safety device that is worn or defective.
- Reinstall all covers correctly before returning the machine to the customer.
- Fan louvers on the machine help to prevent the overheating of internal components. Do not obstruct fan louvers or cover them with labels or stickers.

Electrical safety

Observe the following rules when working on electrical equipments.

Important:

Use only approved tools and test equipments. Some hand tools have handles covered with a soft material that does not insulate you when working with live electrical currents.

Many customers have rubber floor mats near their machines that contain small conductive fibers to decrease electrostatic discharges. Do not use such kind of mat to protect yourself from electrical shock.

- Find the room emergency power-off (EPO) switch, disconnecting switch or electrical outlet. If an electrical accident occurs, you can then operate the switch or unplug the power cord quickly.
- Do not work alone under hazardous conditions or near the equipment that has hazardous voltages.
- Disconnect all power before:
 - Performing a mechanical inspection
 - Working near power supplies
 - Removing or installing main units
- Before you start to work on the machine, unplug the power cord. If you cannot unplug it, ask the customer to power-off the wall box that supplies power to the machine, and to lock the wall box in the off position.
- If you need to work on a machine that has exposed electrical circuits, observe the following precautions:
 - Ensure that another person, familiar with the power-off controls, is near you.

Attention: Another person must be there to switch off the power, if necessary.
 - Use only one hand when working with powered-on electrical equipment; keep the other hand in your pocket or behind your back.

Attention: An electrical shock can occur only when there is a complete circuit. By observing the above rule, you may prevent a current from passing through your body.
 - When using testers, set the controls correctly and use the approved probe leads and accessories for that tester.
 - Stand on suitable rubber mats (obtained locally, if necessary) to insulate you from grounds such as metal floor strips and machine frames.

Observe the special safety precautions when you work with very high voltages; instructions for these precautions are in the safety sections of maintenance information. Be extremely careful when you measure the high voltages.

- Regularly inspect and maintain your electrical hand tools for safe operational condition.
- Do not use worn or broken tools and testers.
- Never assume that power has been disconnected from a circuit. First, check it to make sure that it has been powered off.

- Always look carefully for possible hazards in your work area. Examples of these hazards are moist floors, nongrounded power extension cables, power surges, and missing safety grounds.
- Do not touch live electrical circuits with the reflective surface of a plastic dental mirror. The surface is conductive; such touching can cause personal injury and machine damage.
- Do not service the following parts with the power on when they are removed from their normal operating places in a machine:
 - Power supply units
 - Pumps
 - Blowers and fans
 - Motor generatorsand similar units. (This practice ensures correct grounding of the units.)
- If an electrical accident occurs:
 - Caution: do not become a victim yourself.
 - Switch off the power.
 - Send the victim to get medical aid.

Safety inspection guide

The purpose of this inspection guide is to assist you in identifying potential unsafe conditions. As each machine was designed and built, required safety items were installed to protect users and service personnel from injury. This guide addresses only those items. You should use good judgment to identify potential safety hazards according to the attachment of non-Lenovo features or options not covered by this inspection guide.

If any unsafe conditions are present, you must determine how serious the apparent hazard could be and whether you can continue without first correcting the problem.

Consider these conditions and the safety hazards they present:

- Electrical hazards, especially primary power (primary voltage on the frame can cause serious or fatal electrical shock)
- Explosive hazards, such as a damaged CRT face or a bulging capacitor
- Mechanical hazards, such as loose or missing hardware

To determine whether there are any potential unsafe conditions, use the following checklist at the beginning of every service task. Begin the checks with the power off, and the power cord disconnected.

Checklist:

1. Check exterior covers for damage (loose, broken, or sharp edges).
2. Turn off the computer. Disconnect the power cord.
3. Check the power cord for:
 - a. A third-wire ground connector in good condition. Use a meter to measure third-wire ground continuity for 0.1 ohm or less between the external ground pin and the frame ground.
 - b. The power cord should be the type specified in the parts list.
 - c. Insulation must not be frayed or worn.
4. Check for cracked or bulging batteries.
5. Remove the cover.
6. Check for any obvious non-Lenovo alterations. Use good judgment as to the safety of any non-Lenovo alterations.
7. Check inside the unit for any obvious unsafe conditions, such as metal filings, contamination, water or other liquids, or signs of fire or smoke damage.
8. Check for worn, frayed, or pinched cables.
9. Check that the power-supply cover fasteners (screws or rivets) have not been removed or tampered with.

Handling devices that are sensitive to electrostatic discharge

Any computer part containing transistors or integrated circuits (ICs) should be considered sensitive to electrostatic discharge (ESD). ESD damage can occur when there is a difference in charge between objects. Protect against ESD damage by equalizing the charge so that the machine, the part, the work mat, and the person handling the part are all at the same charge.

Notes:

1. Use product-specific ESD procedures when they exceed the requirements noted here.
2. Make sure that the ESD protective devices you use have been certified (ISO 9000) as fully effective.

When handling ESD-sensitive parts:

- Keep the parts in protective packages until they are inserted into the product.
- Avoid contact with other people.
- Wear a grounded wrist strap against your skin to eliminate static on your body.
- Prevent the part from touching your clothing. Most clothing is insulative and retains a charge even when you are wearing a wrist strap.
- Use the black side of a grounded work mat to provide a static-free work surface. The mat is especially useful when handling ESD-sensitive devices.
- Select a grounding system, such as those listed below, to provide protection that meets the specific service requirement.

Note:

The use of a grounding system to guard against ESD damage is desirable but not necessary.

- Attach the ESD ground clip to any frame ground, ground braid, or green-wire ground.
- When working on a double-insulated or battery-operated system, use an ESD common ground or reference point. You can use coax or connector-outside shells on these systems.
- Use the round ground prong of the ac plug on ac-operated computers.

Grounding requirements

Electrical grounding of the computer is required for operator safety and correct system function. Proper grounding of the electrical outlet can be verified by a certified electrician.

Safety notices: multilingual translations

The safety notices in this section are provided in English, French, German, Hebrew, Italian, Japanese, and Spanish.

Safety notice 1

Before the computer is powered on after FRU replacement, make sure all screws, springs, and other small parts are in place and are not left loose inside the computer. Verify this by shaking the computer and listening for rattling sounds. Metallic parts or metal flakes can cause electrical shorts.

Avant de remettre l'ordinateur sous tension après remplacement d'une unité en clientèle, vérifiez que tous les ressorts, vis et autres pièces sont bien en place et bien fixées. Pour ce faire, secouez l'unité et assurez-vous qu'aucun bruit suspect ne se produit. Des pièces métalliques ou des copeaux de métal pourraient causer un court-circuit.

Bevor nach einem FRU-Austausch der Computer wieder angeschlossen wird, muß sichergestellt werden, daß keine Schrauben, Federn oder andere Kleinteile fehlen oder im Gehäuse vergessen wurden. Der Computer muß geschüttelt und auf Klappergeräusche geprüft werden. Metallteile oder-splitter können Kurzschlüsse erzeugen.

לפני הפעלת המחשב לאחר החלפת FRU יש לוודא שכל הברגים, הקפיצים, וחלקים קטנים אחרים נמצאים במקומם ואינם חופשיים לזוז בתוך המחשב. כדי לוודא זאת, יש ללטלט את המחשב ולהקשיב לגילוי קולות שקשוק. חלקי או שבבי מתכת עלולים לגרום לקצרים חשמליים.

Prima di accendere l'elaboratore dopo che é stata effettuata la sostituzione di una FRU, accertarsi che tutte le viti, le molle e tutte le altri parti di piccole dimensioni siano nella corretta posizione e non siano sparse all'interno dell'elaboratore. Verificare ciò scuotendo l'elaboratore e prestando attenzione ad eventuali rumori; eventuali parti o pezzetti metallici possono provocare cortocircuiti pericolosi.

FRUの交換後、コンピュータの電源を入れる前に、ねじ、バネ、その他の小さな部品がすべて正しい位置にあり、またコンピュータの内部で緩んでいないことを確認してください。これを確認するには、コンピュータを振って、カチャカチャと音がしないか確かめます。金属部品や金属破片はショートの原因になることがあります。

Antes de encender el sistema despues de sustituir una FRU, compruebe que todos los tornillos, muelles y demás piezas pequeñas se encuentran en su sitio y no se encuentran sueltas dentro del sistema. Compruébelo agitando el sistema y escuchando los posibles ruidos que provocarían. Las piezas metálicas pueden causar cortocircuitos eléctricos.

Safety notice 2

⚠ DANGER

Some standby batteries contain a small amount of nickel and cadmium. Do not disassemble a standby battery, recharge it, throw it into fire or water, or short-circuit it. Dispose of the battery as required by local ordinances or regulations. Use only the battery in the appropriate parts listing. Use of an incorrect battery can result in ignition or explosion of the battery.

Certaines batteries de secours contiennent du nickel et du cadmium. Ne les démontez pas, ne les rechargez pas, ne les exposez ni au feu ni à l'eau. Ne les mettez pas en court-circuit. Pour les mettre au rebut, conformez-vous à la réglementation en vigueur. Lorsque vous remplacez la pile de sauvegarde ou celle de l'horloge temps réel, veillez à n'utiliser que les modèles cités dans la liste de pièces détachées adéquate. Une batterie ou une pile inappropriée risque de prendre feu ou d'exploser.

Die Bereitschaftsbatterie, die sich unter dem Diskettenlaufwerk befindet, kann geringe Mengen Nickel und Cadmium enthalten. Sie darf nicht zerlegt, wiederaufgeladen, kurzgeschlossen, oder Feuer oder Wasser ausgesetzt werden. Bei der Entsorgung die örtlichen Bestimmungen für Sondermüll beachten. Beim Ersetzen der Bereitschafts- oder Systembatterie nur Batterien des Typs verwenden, der in der Ersatzteilliste aufgeführt ist. Der Einsatz falscher Batterien kann zu Entzündung oder Explosion führen.

סוללות המתנה מסוימות מכילות כמות קטנה של ניקל וקדמיום. אין לפרק סוללת המתנה, לטעון אותה מחדש, להשליך אותה לנאש או למים או לקצר אותה. יש לשלוק את הסוללה בנדרש על ידי התקנות והחוקים המקומיים. יש להשתמש רק בסוללה המופיעה ברשימת החלקים המתאימה. שימוש בסוללה לא מתאימה עלול לגרום להצתה או התפוצצות של הסוללה.

Alcune batterie di riserva contengono una piccola quantità di nichel e cadmio. Non smontarle, ricaricarle, gettarle nel fuoco o nell'acqua né cortocircuitarle. Smaltirle secondo la normativa in vigore (DPR 915/82, successive disposizioni e disposizioni locali). Quando si sostituisce la batteria dell'RTC (real time clock) o la batteria di supporto, utilizzare soltanto i tipi inseriti nell'appropriato Catalogo parti. L'impiego di una batteria non adatta potrebbe determinare l'incendio o l'esplosione della batteria stessa.

予備バッテリーの中には少量のニッケルとカドミウムが含まれているものがあります。したがって、予備バッテリーの分解、再充電、火または水の中への投棄、またはショートさせることは決して行わないでください。バッテリーを廃棄する場合は地方自治体の条例に従ってください。適切なパーツ・リストにあるバッテリーだけを使用してください。誤ったバッテリーを使用すると、バッテリーが発火したり、爆発したりすることがあります。

Algunas baterías de reserva contienen una pequeña cantidad de níquel y cadmio. No las desmonte, ni recargue, ni las eche al fuego o al agua ni las cortocircuite. Deséchelas tal como dispone la normativa local. Utilice sólo baterías que se encuentren en la lista de piezas. La utilización de una batería no apropiada puede provocar la ignición o explosión de la misma.

Safety notice 3**⚠ DANGER**

The battery pack contains small amounts of nickel. Do not disassemble it, throw it into fire or water, or short-circuit it. Dispose of the battery pack as required by local ordinances or regulations. Use only the battery in the appropriate parts listing when replacing the battery pack. Use of an incorrect battery can result in ignition or explosion of the battery.

La batterie contient du nickel. Ne la démontez pas, ne l'exposez ni au feu ni à l'eau. Ne la mettez pas en court-circuit. Pour la mettre au rebut, conformez-vous à la réglementation en vigueur. Lorsque vous remplacez la batterie, veillez à n'utiliser que les modèles cités dans la liste de pièces détachées adéquate. En effet, une batterie inappropriée risque de prendre feu ou d'exploser.

Akkumulační články obsahují malé množství niklu. Nemějte je rozmontovat, nehoďte je do ohně ani do vody, nekrátkujedte. Odstraňujte je podle místních předpisů nebo předpisů. Používejte pouze baterie uvedené v seznamu dílů. Použití nesprávné baterie může způsobit vznícení nebo explozi článku.

מארו הסוללה מכיל כמויות קטנות של ניקל וקדמיום. אין לפרק את מארו הסוללה, להשליך אותו לאש או למים או לקצר אותו. יש לשלוק את מארו הסוללה כנדרש על ידי התקנות והחוקים המקומיים. יש להשתמש רק בסוללה המופיעה ברשימת החלקים המתאימה בזמן החלפת מארו הסוללה. שימוש בסוללה לא מתאימה עלול לגרום לתוצאה או התפוצצות של הסוללה.

La batteria contiene piccole quantità di nichel. Non smontarla, gettarla nel fuoco o nell'acqua né cortocircuitarla. Smaltirla secondo la normativa in vigore (DPR 915/82, successive disposizioni e disposizioni locali). Quando si sostituisce la batteria, utilizzare soltanto i tipi inseriti nell'appropriato Catalogo parti. L'impiego di una batteria non adatta potrebbe determinare l'incendio o l'esplosione della batteria stessa.

バッテリー・パックには少量のニッケルが含まれています。バッテリー・パックを分解したり、火または水の中に投げ込んだり、ショートさせないでください。バッテリー・パックの廃棄にあたっては、地方自治体の条例または規則に従ってください。バッテリー・パックを交換するときは、適切なパーツ・リストにあるバッテリーだけを使用してください。誤ったバッテリーを使用すると、バッテリーが発火したり、爆発したりすることがあります。

Las baterías contienen pequeñas cantidades de níquel. No las desmonte, ni recargue, ni las eche al fuego o al agua ni las cortocircuite. Deséchelas tal como dispone la normativa local. Utilice sólo baterías que se encuentren en la lista de piezas al sustituir la batería. La utilización de una batería no apropiada puede provocar la ignición o explosión de la misma.

Safety notice 4

DANGER

The lithium battery can cause a fire, an explosion, or a severe burn. Do not recharge it, remove its polarized connector, disassemble it, heat it above 100°C (212°F), incinerate it, or expose its cell contents to water. Dispose of the battery as required by local ordinances or regulations. Use only the battery in the appropriate parts listing. Use of an incorrect battery can result in ignition or explosion of the battery.

La pile de sauvegarde contient du lithium. Elle présente des risques d'incendie, d'explosion ou de brûlures graves. Ne la rechargez pas, ne retirez pas son connecteur polarisé et ne la démontez pas. Ne l'exposez pas à une température supérieure à 100°C, ne la faites pas brûler et n'en exposez pas le contenu à l'eau. Mettez la pile au rebut conformément à la réglementation en vigueur. Une pile inappropriée risque de prendre feu ou d'exploser.

Die Systematterie ist eine Lithiumatterie. Sie kann sich entzünden, explodieren oder schwere Verbrennungen hervorrufen. Batterien dieses Typs dürfen nicht aufgeladen, zerlegt, über 100 C erhitzt oder verbrannt werden. Auch darf ihr Inhalt nicht mit Wasser in Verbindung gebracht oder der zur richtigen Polung angebrachte Verbindungsstecker entfernt werden. Bei der Entsorgung die örtlichen Bestimmungen für Sondermüll beachten. Beim Ersetzen der Batterie nur Batterien des Typs verwenden, der in der Ersatzteilliste aufgeführt ist. Der Einsatz falscher Batterien kann zu Entzündung oder Explosion führen.

סוללת הליתיום עלולה לגרום לשריפה, להתפוצצות או לכוויות קשות. אין לטעון אותה מחדש, לטלוק את המחבר המקוטב שלה, לפרק אותה או לחמם אותה לטמפרטורה העולה על 100 מעלות צלזיוס. אין לשרוף את הסוללה ואין לחרוף את תוכן התא למים. יש לטלוק את הסוללה כנדרש בתקנות ובחוקים המקומיים. יש להשתמש רק בסוללה המומינה ברשימת החלקים המתאימים. שימוש בסוללה אחרת עלול לגרום לשריפה או התפוצצות.

La batteria di supporto e una batteria al litio e puo incendiarsi, esplodere o procurare gravi ustioni. Evitare di ricaricarla, smontarne il connettore polarizzato, smontarla, riscaldarla ad una temperatura superiore ai 100 gradi centigradi, incendiarla o gettarla in acqua. Smaltirla secondo la normativa in vigore (DPR 915/82, successive disposizioni e disposizioni locali). L'impiego di una batteria non adatta potrebbe determinare l'incendio o l'esplosione della batteria stessa.

リチウム・バッテリーは、火災、爆発、または重症のやけどを引き起こすことがあります。バックアップ・バッテリーの充電、その極性コネクタの取り外し、バッテリー本体の分解、100°C (212°F) 以上への加熱、焼却、電池の中身を水に浸すことはしないでください。バッテリーを廃棄する場合は地方自治体の条例に従ってください。適切なパーツ・リストにあるバッテリーだけを使用してください。誤ったバッテリーを使用すると、バッテリーが発火したり、爆発したりすることがあります。

La batería de repuesto es una batería de litio y puede provocar incendios, explosiones o quemaduras graves. No la recargue, ni quite el conector polarizado, ni la desmonte, ni caliente por encima de los 100°C (212°F), ni la incinere ni exponga el contenido de sus celdas al agua. Deséchela tal como dispone la normativa local.

Safety notice 5

If the LCD breaks and the fluid from inside the LCD gets into your eyes or on your hands, immediately wash the affected areas with water at least for 15 minutes. Seek medical care if any symptoms caused by the fluid are present after washing.

Si le panneau d'affichage à cristaux liquides se brise et que vous recevez dans les yeux ou sur les mains une partie du fluide, rincez-les abondamment pendant au moins quinze minutes. Consultez un médecin si des symptômes persistent après le lavage.

Die Leuchtstoffröhre im LCD-Bildschirm enthält Quecksilber. Bei der Entsorgung die örtlichen Bestimmungen für Sondermüll beachten. Der LCD-Bildschirm besteht aus Glas und kann zerbrechen, wenn er unsachgemäß behandelt wird oder der Computer auf den Boden fällt. Wenn der Bildschirm beschädigt ist und die darin befindliche Flüssigkeit in Kontakt mit Haut und Augen gerät, sollten die betroffenen Stellen mindestens 15 Minuten mit Wasser abgespült und bei Beschwerden anschließend ein Arzt aufgesucht werden.

אם מסך הנביש הנוזלי (LCD) נשבר והנוזל מתוך המסך בא במגע עם עיניים או ידיים, שטפו את האזורים הנוגעים מיד במים במשך 15 דקות לפחות. פנו לקבלת עזרה רפואית אם תסמינים הנובעים מהמגע עם הנוזל נמשכים לאחר השטיפה.

Nel caso che caso l'LCD si dovesse rompere ed il liquido in esso contenuto entrasse in contatto con gli occhi o le mani, lavare immediatamente le parti interessate con acqua corrente per almeno 15 minuti; poi consultare un medico se i sintomi dovessero permanere.

LCD が破損し、LCD 中の液体が目に入ったり、手に触れたりした場合は、液体が触れた部分を少なくとも 15 分間洗い流してください。洗い流した後に、液体によって何らかの症状が現れた場合は、医師の治療を受けてください。

Si la LCD se rompe y el fluido de su interior entra en contacto con sus ojos o sus manos, lave inmediatamente las áreas afectadas con agua durante 15 minutos como mínimo. Obtenga atención medica si se presenta algún sintoma del fluido despues de lavarse.

Safety notice 6

⚠ DANGER

To avoid shock, do not remove the plastic cover that protects the lower part of the inverter card.

Afin d'éviter tout risque de choc électrique, ne retirez pas le cache en plastique protégeant la partie inférieure de la carte d'alimentation.

Aus Sicherheitsgründen die Kunststoffabdeckung, die den unteren Teil der Spannungswandlerplatine umgibt, nicht entfernen.

כדי למנוע התחשמלות, אין להסיר את מכסה הפלסטיק המגן על חלקו התחתון של הכרטיס ההפוך.

Per evitare scosse elettriche, non rimuovere la copertura in plastica che avvolge la parte inferiore della scheda invertitore.

感電を防ぐため、インバーター・カードの下部を保護しているプラスチック・カバーを外さないでください。

Para evitar descargas, no quite la cubierta de plástico que rodea la parte baja de la tarjeta invertida.

Safety notice 7

⚠ DANGER

Though the main batteries have low voltage, a shorted or grounded battery can produce enough current to burn personnel or combustible materials.

Bien que le voltage des batteries principales soit peu élevé, le court-circuit ou la mise à la masse d'une batterie peut produire suffisamment de courant pour brûler des matériaux combustibles ou causer des brûlures corporelles graves.

Obwohl Hauptbatterien eine niedrige Spannung haben, können sie doch bei Kurzschluß oder Erdung genug Strom abgeben, um brennbare Materialien zu entzünden oder Verletzungen bei Personen hervorzurufen.

אף שהסוללות הראשיות הן בעלות מתח נמוך, סוללה מקוצרת או מוארקת עלולה להפיק זרם מספיק לגרימת כוויות או להצתת חומרים דליקים.

Sebbene le batterie di alimentazione siano a basso voltaggio, una batteria in corto circuito o a massa può fornire corrente sufficiente da bruciare materiali combustibili o provocare ustioni ai tecnici di manutenzione.

メイン・バッテリーの電圧は低くても、ショートしたり、接地したバッテリーが、作業者にやけどを負わせたり、可燃物を燃やすだけの電流を発生させる場合があります。

Aunque las baterías principales tienen un voltaje bajo, una batería cortocircuitada o con contacto a tierra puede producir la corriente suficiente como para quemar material combustible o provocar quemaduras en el personal.

Safety notice 8

⚠ DANGER

Before removing any FRU, turn off the computer, unplug all power cords from electrical outlets, remove the battery pack, and then disconnect any interconnecting cables.

Avant de retirer une unité remplaçable en clientèle, mettez le système hors tension, débranchez tous les cordons d'alimentation des socles de prise de courant, retirez la batterie et déconnectez tous les cordons d'interface.

Die Stromzufuhr muß abgeschaltet, alle Stromkabel aus der Steckdose gezogen, der Akku entfernt und alle Verbindungskabel abgenommen sein, bevor eine FRU entfernt wird.

לפני סילוק FRU כלשהו, יש לכבות את המחשב, לנתק את כל כבלי החשמל משקעי החשמל, להוציא את מטריז הסוללה, ואז לנתק כבלי חיבור אחרים אם יש כאלה.

Prima di rimuovere qualsiasi FRU, spegnere il sistema, scollegare dalle prese elettriche tutti i cavi di alimentazione, rimuovere la batteria e poi scollegare i cavi di interconnessione.

FRU を取り外す前に、**ThinkPad** の電源を切って、すべての電源コードをコンセントから外してください。次に、バッテリー・パックを外し、相互接続ケーブルを外してください。

Antes de quitar una FRU, apague el sistema, desenchufe todos los cables de las tomas de corriente eléctrica, quite la batería y, a continuación, desconecte cualquier cable de conexión entre dispositivos.

Laser compliance statement

Some models of Lenovo computer are equipped from the factory with an optical storage device such as a CD-ROM drive or a DVD-ROM drive. Such devices are also sold separately as options. If one of these drives is installed, it is certified in the U.S. to conform to the requirements of the Department of Health and Human Services 21 Code of Federal Regulations (DHHS 21 CFR) Subchapter J for Class 1 laser products. Elsewhere, the drive is certified to conform to the requirements of the International Electrotechnical Commission (IEC) 825 and CENELEC EN 60 825 for Class 1 laser products.

If a CD-ROM drive, a DVD-ROM drive, or another laser device is installed, note the following:

CAUTION

Use of controls or adjustments or performance of procedures other than those specified herein might result in hazardous radiation exposure.

O uso de controles, ajustes ou desempenho de procedimentos diferentes daqueles aqui especificados pode resultar em perigosa exposição à radiação.

凡未在这里指明的任何控制用法、调整、行为，都会导致严重后果。

Pour éviter tout risque d'exposition au rayon laser, respectez les consignes de réglage et d'utilisation des commandes, ainsi que les procédures décrites.

Werden Steuer- und Einstellelemente anders als hier festgesetzt verwendet, kann gefährliche Laserstrahlung auftreten.

Az itt előírt eljárásoktól, beállítástól és vezérlésektől eltérni a lézersugárzás veszélye miatt kockázatos!

L'utilizzo di controlli, regolazioni o l'esecuzione di procedure diverse da quelle specificate possono provocare l'esposizione a.

Использование элементов настройки и выполнение процедур иных, чем указано здесь, может привести к опасному радиационному облучению.

Použitie kontrol, úprav alebo iných vykonaní od iných výrobcov, ako je v tomto špecifikované, mohlo by mať za následok nebezpečenstvo vystavenia sa vyžiarovaniu.

本書で指定された内容以外の、お客様による整備、調整、または手順を行った場合、レーザー光の放射の危険があります。

El uso de controles o ajustes o la ejecución de procedimientos distintos de los aquí especificados puede provocar la exposición a radiaciones peligrosas.

Opening the CD-ROM drive, the DVD-ROM drive, or any other optical storage device could result in exposure to hazardous laser radiation. There are no serviceable parts inside those drives. **Do not open.**

A CD-ROM drive, a DVD-ROM drive, or any other storage device installed may contain an embedded Class 3A or Class 3B laser diode. Note the following:

⚠ DANGER

Emits visible and invisible laser radiation when open. Do not stare into the beam, do not view directly with optical instruments, and avoid direct exposure to the beam.

Radiação por raio laser ao abrir. Não olhe fixo no feixe de luz, não olhe diretamente por meio de instrumentos óticos e evite exposição direta com o feixe de luz.

开启时会有激光发射时，请勿盯视激光光束，请勿直接查看视觉仪器，并且避免直接接触在激光光束之中。

Rayonnement laser si carter ouvert. Évitez de fixer le faisceau, de le regarder directement avec des instruments optiques, ou de vous exposer au rayon.

Laserstrahlung bei geöffnetem Gerät. Nicht direkt oder über optische Instrumente in den Laserstrahl sehen und den Strahlungsbereich meiden.

Kinyitáskor lézersugár ! Ne nézzen bele se szabad szemmel, se optikai eszközökkel. Kerülje a sugárnyalábbal való érintkezést!

Aprendo l'unità vengono emesse radiazioni laser. Non fissare il fascio, non guardarlo direttamente con strumenti ottici e evitare l'esposizione diretta al fascio.

Открывая, берегитесь лазерного излучения. Не смотрите на луч, не разглядывайте его с помощью оптических инструментов, а также избегайте прямого воздействия лазерного луча.

Keď je laserová jednotka otvorená. Vyhňte sa priamemu pohľadu a nehládte priamo s optickými nástrojmi do lúča a vyhňte sa priamemu vystaveniu lúčov.

開けるとレーザー光が放射されます。光線を見つめたり、光学機械を使って直接見たりしないでください。

Radiación láser al abrir. No mire fijamente ni examine con instrumental óptico el haz de luz. Evite la exposición directa al haz.

Important service information

This chapter presents the following important service information:

- “Strategy for replacing FRUs” on page 16
 - “Strategy for replacing a hard disk drive” on page 17
 - “Important notice for replacing a system board” on page 17
- “Important information about replacing RoHS compliant FRUs” on page 18

Important:

BIOS and device driver fixes are customer-installable. The BIOS and device drivers are posted on the customer support site:

<http://support.lenovo.com>.

Strategy for replacing FRUs

Before replacing parts:

Make sure that all software fixes, drivers, and BIOS downloads are installed before replacing any FRUs listed in this manual.

After a system board is replaced, ensure that the latest BIOS is loaded to the system board before completing the service action.

To download software fixes, drivers, and BIOS, follow the steps below:

1. Go to <http://support.lenovo.com>.
2. Enter the serial number or select a product or use Lenovo smart downloading.
3. Select the BIOS/Driver/Applications and download.
4. Follow the directions on the screen and install the necessary software.

Use the following strategy to prevent unnecessary expense for replacing and servicing FRUs:

- If you are instructed to replace an FRU, but the replacement does not solve the problem, reinstall the original FRU before you continue.
- Some computers have both a processor board and a system board. If you are instructed to replace either of them, and replacing one of them does not solve the problem, reinstall that board, and then replace the other one.
- If an adapter or a device consists of more than one FRU, any of the FRUs may be the cause of the error. Before replacing the adapter or device, remove the FRUs one by one to see if the symptoms change. Replace only the FRU that changed the symptoms.

Attention: The setup configuration on the computer you are servicing may have been customized. Running Automatic Configuration may alter the settings. Note the current configuration settings (using the View Configuration option); then, when service has been completed, verify that those settings remain in effect.

Strategy for replacing a hard disk drive

Always try to run a low-level format before replacing a hard disk drive. This will cause all customer data on the hard disk to be lost. Make sure that the customer has a current backup of the data before performing this action.

Attention: The drive startup sequence in the computer you are servicing may have been changed. Be extremely careful during write operations such as copying, saving, or formatting. If you select an incorrect drive, data or programs can be overwritten.

Important notice for replacing a system board

Some components mounted on a system board are very sensitive. Improper handling can cause damage to those components, and may cause a system malfunction.

Attention: When handling a system board:

- Do not drop the system board or apply any excessive force to it.
- Avoid rough handling of any kind.
- Avoid bending the system board and hard pushing to prevent cracking at each BGA (Ball Grid Array) chipset.

Important information about replacing RoHS compliant FRUs

RoHS, The Restriction of Hazardous Substances in Electrical and Electronic Equipment Directive (2002/95/EC) is a European Union legal requirement affecting the global electronics industry. RoHS requirements must be implemented on Lenovo products placed on the market after June 2006. Products on the market before June 2006 are not required to have RoHS compliant parts. If the original FRU parts are non-compliant, replacement parts can also be non-compliant. In all cases if the original FRU parts are RoHS compliant, the replacement part must also be RoHS compliant.

Note: RoHS and non-RoHS FRU part numbers with the same fit and function are identified with unique FRU part numbers.

Lenovo plans to transit to RoHS compliance well before the implementation date and expects its suppliers to be ready to support Lenovo's requirements and schedule in the EU. Products sold in 2005 and 2006 will contain some RoHS compliant FRUs. The following statement pertains to these products and any product Lenovo produces containing RoHS compliant FRUs.

RoHS compliant FRUs have unique FRU part numbers. Before or after the RoHS implementation date, failed RoHS compliant parts must always be replaced with RoHS compliant ones, so only the FRUs identified as compliant in the system HMM or direct substitutions for those FRUs may be used.

Products marketed before June 2006		Products marketed after June 2006	
Current or original part	Replacement FRU	Current or original part	Replacement FRU
Non-RoHS	Can be Non-RoHS	Must be RoHS	Must be RoHS
Non-RoHS	Can be RoHS		
Non-RoHS	Can sub to RoHS		
RoHS	Must be RoHS		

Note: A direct substitution is a part with a different FRU part number that is automatically shipped by the distribution center at the time of the order.

General checkout

This chapter presents the following information:

- “What to do first” on page 20
- “Power system checkout” on page 21

Before you go to the checkout, make sure to read the following important notes:

Important notes:

- **Only certified trained personnel can service the computer.**
- **Before replacing any FRU, read the entire page on removing and replacing FRUs.**
- **Carefully remove screws for reuse when replacing FRUs.**
- **Be extremely careful during such write operations as copying, saving, or formatting.** Drives in the computer that you are servicing sequence might have been altered. If you select an incorrect drive, data or programs might be overwritten.
- **Replace an FRU only with another FRU of the correct model.** When you replace an FRU, make sure that the machine model and the FRU part number are correct by referring to the FRU parts list.
- **An FRU should not be replaced just because of a single, unreproducible failure.** Single failures can occur for a variety of reasons that have nothing to do with a hardware defect, such as cosmic radiation, electrostatic discharge, or software errors. Consider replacing an FRU only when a problem recurs. If you suspect that an FRU is defective, clear the error logs and run the test again. If the error does not recur, do not replace the FRU.
- **Be careful not to replace a nondefective FRU.**

What to do first

When you do return an FRU, you must include the following information in the parts exchange form or parts return form that you attach to it:

1. Name and phone number of servicer
2. Date of service
3. Date on which the machine failed
4. Date of purchase
5. Procedure index and page number in which the failing FRU was detected
6. Failing FRU name and part number
7. Machine type, model number, and serial number
8. Customer's name and address

Note for warranty: During the warranty period, the customer may be responsible for repair costs if the computer damage was caused by misuse, accident, modification, unsuitable physical or operating environment, or improper maintenance by the customer.

The following is a list of some common items that are not covered under warranty and some symptoms that might indicate that the system was subjected to stress beyond normal use.

Before checking problems with the computer, determine whether the damage is covered under the warranty by referring to the following list:

The following are not covered under warranty:

- LCD panel cracked from the application of excessive force or from being dropped
- Scratched (cosmetic) parts
- Distortion, deformation, or discoloration of the cosmetic parts
- Plastic parts, latches, pins, or connectors that have been cracked or broken by excessive force
- Damage caused by liquid spilled into the system
- Damage caused by the improper insertion of a PC Card or the installation of an incompatible card
- Improper disk insertion or use of an optical drive
- Diskette drive damage caused by pressure on the diskette drive cover, foreign material in the drive, or the insertion of a diskette with multiple labels
- Damaged or bent diskette eject button
- Fuses blown by attachment of a nonsupported device
- Forgotten computer password (making the computer unusable)
- Sticky keys caused by spilling a liquid onto the keyboard
- Use of an incorrect AC adapter on laptop products

The following symptoms might indicate damage caused by nonwarranted activities:

- Missing parts might be a symptom of unauthorized service or modification.
- If the spindle of a hard disk drive becomes noisy, it may have been subjected to excessive force, or dropped.

Power system checkout

To verify a symptom, follow the steps below:

1. Turn off the computer.
2. Connect the AC adapter.
3. Make sure that power is supplied when you turn on the computer.
4. Turn off the computer.
5. Disconnect the AC adapter.
6. Make sure that the battery pack supplies power when you turn on the computer.

If you suspect a power problem, see the appropriate power supply checkout:

- “Checking the AC adapter” on page 21
- “Checking operational charging” on page 22

Checking the AC adapter

You are here because the computer fails only when the AC adapter is used.

- If the power-on indicator does not turn on, check the power cord of the AC adapter for correct continuity and installation.
- If the computer does not charge during operation, go to “Checking operational charging”.

To check the AC adapter, follow the steps below:

1. Unplug the AC adapter cable from the computer.
2. Measure the output voltage at the plug of the AC adapter cable. See the following figure:



Pin	Voltage (V DC)
1	+20
2	0

Note: Output voltage for the AC adapter pin No. 2 may differ from the one you are servicing.

3. If the voltage is not correct, replace the AC adapter.
4. If the voltage is acceptable, do the following:
 - Replace the system board.
 - If the problem persists, go to “Lenovo YOGA 720-12IKB” on page 26.

Note: Noise from the AC adapter does not always indicate a defect.

Checking operational charging

To check whether the battery charges properly during operation, use a discharged battery pack or a battery pack that has less than 50% of the total power remaining when installed in the computer.

Perform operational charging. If the battery status indicator or icon is not lit, remove the battery pack and let it return to room temperature. Reinstall the battery pack. If the charge indicator or icon is still off, replace the battery pack.

If the charge indicator is still not lit, replace the system board.

Checking the battery pack

Battery charging does not start until the Power Meter shows that less than 95% of the total power remains; under this condition the battery pack can charge to 100% of its capacity. This protects the battery pack from being overcharged or from having a shortened life.

To check your battery, move your cursor to the Power Meter icon in the icon tray of the Windows® taskbar and wait for a moment (but do not click it), and the percentage of battery power remaining is displayed. To get detailed information about the battery, double-click the Power Meter icon.

Note: If the battery pack becomes hot, it may not be able to be charged. Remove it from the computer and leave it at room temperature for a while. After it cools down, reinstall and recharge it.

Related service information

This chapter presents the following information:

- “Restoring the factory contents by using recovery system” on page 23
- “Passwords” on page 24
- “Power management” on page 25

Restoring the factory contents by using recovery system

Restore of factory default

The Lenovo YOGA 720-12IKB computer comes with pre-installed recovery system. In order to save application files and the initial backed up files of the system, the hard disk in a Lenovo computer includes a hidden partition when it is shipped. If you need to restore the system to the point of your first boot up, just enter the Recovery System. For details of the Recovery system, see *the User Guide for Recovery system*.

Note: This will delete all the new data on the system partition (C drive), which is not recoverable. Make sure to back up your critical data before you perform this action.

Passwords

As many as three passwords may be needed for any Lenovo computer: the power-on password (POP), the hard disk password (HDP), and the supervisor password.

If any of these passwords has been set, a prompt for it appears on the screen whenever the computer is turned on. The computer does not start until the password is entered.

Power-on password

A power-on password (POP) protects the system from being powered on by an unauthorized person. The password must be entered before an operating system can be booted.

Hard-disk password

There are two hard-disk passwords (HDPs):

+ User HDP - for the user

+ Master HDP - for the system administrator, who can use it to get access to the hard disk drive even if the user has changed the user HDP

Attention: If the user HDP has been forgotten, check whether a master HDP has been set. If it has, it can be used for access to the hard disk drive. If no master HDP is available, neither Lenovo nor Lenovo authorized service technicians provide any services to reset either the user or the master HDP, or to recover data from the hard disk drive. The hard disk drive can be replaced for a scheduled fee.

Supervisor password

A supervisor password protects the system information stored in the BIOS. The user must enter the supervisor password to get access to the BIOS and change the system configuration.

Attention: If you forget the password, there is no service procedure to reset the password. The system board must be replaced for a scheduled fee.

Power management

Note: Power management modes are not supported for an APM operating system.


Putting the computer to sleep or shutting it down

When you have finished working with your computer, you can put it to sleep or shut it down.

Putting your computer to sleep

If you will be away from your computer for only a short time, put the computer to sleep. When the computer is in sleep mode, you can quickly wake it to resume use, bypassing the startup process.

To put the computer to sleep, do one of the following:

- Close the display lid.
- Press the Power button.
- Open the start menu, and then select **Power**  → **Sleep**.

Attention: Wait until the power indicator light starts blinking (indicating that the computer is in sleep mode) before you move your computer. Moving your computer while the hard disk is spinning can damage the hard disk, causing loss of data.

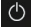
To wake the computer, do one of the following:

- Press any key on the keyboard. (Notebook mode only)
- Press the Power button.

Shutting down the computer

If you are not going to use your computer for a long time, shut it down.

To shut down your computer, do one of the following:

- Open the start menu, and then select **Power**  → **Shut down**.
- Press and hold or right-click the **Start** button in the lower-left corner and select **Shut down or sign out** → **Shut down**.

Lenovo YOGA 720-12IKB

This chapter presents the following product-specific service references and product-specific parts information:

- “Specifications” on page 26
- “Status indicators” on page 27
- “Keyboard function keys” on page 28
- “FRU replacement notices” on page 29
- “Removing and replacing an FRU” on page 30
- “Locations” on page 56
- “Parts list” on page 58

Specifications

The following table lists the specifications of the Lenovo YOGA 720-12IKB:

Table 1. Specifications


Feature	Description
Processor	View the system properties of your computer. You can do this as follows: Open the Control Panel , and then select System and Security → System .
Graphic Chipset	<ul style="list-style-type: none"> • Integrated Graphics
Display	<ul style="list-style-type: none"> • 12.5-inch, 1,920 × 1,080 pixels FHD
Standard memory	<ul style="list-style-type: none"> • DDR4-2133 MHz (max 12 GB)
SSD	<ul style="list-style-type: none"> • 128 GB, 256 GB, 512 GB, SATA
I/O port	<ul style="list-style-type: none"> • USB 3.0 × 1 • Combo audio jack × 1 • Type-C × 1 (compatible with USB 3.0 & DisplayPort)
Audio	<ul style="list-style-type: none"> • 1/8" Combo audio jack • Audio by Harman 1.5W Speaker x 2 • Built-in microphone × 2
Bluetooth wireless	<ul style="list-style-type: none"> • BT 4.1, combo with Wi-Fi card
Keyboard	<ul style="list-style-type: none"> • 6 Row, Lenovo Keyboard
Touch pad	<ul style="list-style-type: none"> • Multi-touch type
Integrated camera	<ul style="list-style-type: none"> • 1M, 720P HD
Battery	<ul style="list-style-type: none"> • 3 cells, 36 Wh
AC adapter	<ul style="list-style-type: none"> • 20 V, 45 W / 65 W
Pre-installed operating system	<ul style="list-style-type: none"> • Win10

Status indicators

The system status indicators below show the computer status:



Table 2. Status indicators

Indicator	Indicator status	Charge status	Meaning
1 Battery status indicator	On (solid white)	Charging	The battery has more than 80% charge.
	On (solid amber)	Discharging	The battery has between 5% and 20% charge.
	Blinking slowly (white)	Charging	The battery has between 20% and 80% charge. When the battery reaches 80% charge, the light will stop blinking. However, charging will continue until the battery is fully charged.
	Blinking slowly (amber)	Charging	The battery has less than 20% charge. When the battery charge reaches 20%, the blinking color will change to white.
	Blinking quickly (amber)	Discharging	The battery has less than 5% charge.
	Off	Discharging	The battery has more than 20% charge.
2 Power status indicator 	On (solid white)		The computer is powered on.
	Blinking		The computer is in sleep mode.
	Off		The computer is powered off.











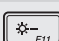

Keyboard function keys

You can access certain system settings quickly by pressing the appropriate function keys.

Table 3. Fn key combinations

Fn + B:	Activates the break function.
Fn + P:	Activates the pause function.
Fn + C:	Enables/disables the scroll lock.
Fn + S:	Activates the system request.
Fn + ↑:	Activates the Pgup key function.
Fn + ↓:	Activates the Pgdn key function.
Fn + ←:	Activates the home key function.
Fn + →:	Activates the end key function.
Fn + Space: (on select models)	Adjusts the keyboard backlight (off → dim → bright → off).

Table 4. Hotkeys

 :	Mutes/unmutes the sound.
 :	Decreases the volume level.
 :	Increases the volume level.
 :	Enables/disables the microphone.
 :	Refreshes the desktop or the currently active window.
 :	Enables/disables the touchpad.
 :	Enables/disables Airplane mode.
 :	Enables/disables the integrated camera.
 :	Locks the screen.
 :	Toggles the display between the computer and an external device.
 :	Decreases display brightness.
 :	Increases display brightness.

Note: You can use the Lenovo Setting to enable/disable the hotkey function.

FRU replacement notices

This section presents notices related to removing and replacing parts. Read this section carefully before replacing any FRU.

Screw notices

Loose screws can cause a reliability problem. In the Lenovo computer, this problem is addressed with special nylon-coated screws that have the following characteristics:

- They maintain tight connections.
- They do not easily come loose, even with shock or vibration.
- They are harder to tighten.

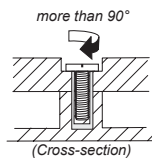
Do the following when you service this machine:

- Keep the screw kit in your tool bag.
- Carefully remove screws for reuse when replacing FRUs.
- Use a torque screwdriver if you have one.

Tighten screws as follows:

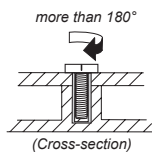
- **Plastic to plastic**

Turn an additional 90° after the screw head touches the surface of the plastic part:



- **Logic card to plastic**

Turn an additional 180° after the screw head touches the surface of the logic card:



- **Torque driver**

If you have a torque screwdriver, refer to the “Torque” column for each step.

- Make sure that you use the correct screws. If you have a torque screwdriver, tighten all screws firmly to the torque shown in the table. **Carefully remove screws for reuse when replacing FRUs. Make sure that all screws are tightened firmly.**
- Ensure torque screwdrivers are calibrated correctly following country specifications.

Removing and replacing an FRU

This section presents exploded figures with the instructions to indicate how to remove and replace the FRU. Make sure to observe the following general rules:

1. Do not attempt to service any computer unless you have been trained and certified. An untrained person runs the risk of damaging parts.
2. Before replacing any FRU, review “FRU replacement notices” on page 29.
3. Begin by removing any FRUs that have to be removed before the failing FRU. Any of such FRUs are listed at the top of the page. Remove them in the order in which they are listed.
4. Follow the correct sequence in the steps to remove the FRU, as given in the figures by the numbers in square callouts.
5. When turning a screw to replace an FRU, turn it in the direction as given by the arrow in the figure.
6. When removing the FRU, move it in the direction as given by the arrow in the figure.
7. To put the new FRU in place, reverse the removal procedures and follow any of the notes that pertain to replacement. For information about connecting and arranging internal cables, see “Locations” on page 56.
8. When replacing an FRU, use the correct screw as shown in the procedures.

 **DANGER**

Before removing any FRU, turn off the computer, unplug all power cords from electrical outlets, remove the battery pack, and then disconnect any of the interconnecting cables.

Attention: After replacing an FRU, do not turn on the computer until you have made sure that all screws, springs, and other small parts are in place and none are loose inside the computer. Verify this by shaking the computer gently and listening for rattling sounds. Metallic parts or metal flakes can cause electrical short circuits.

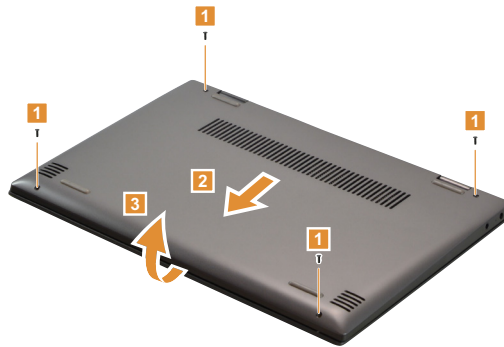
Attention: The system board is sensitive to, and can be damaged by, electrostatic discharge. Before touching it, establish personal grounding by touching a ground point with one hand or using an electrostatic discharge (ESD) strap (P/N 6405959) to remove potential shock reasons.

1010 Base cover

Figure 1. Removal steps of base cover

Remove the screws **1**. Pull the base cover in the direction shown by arrow **2**, then remove the base cover in the direction shown by arrow **3**.

Note: Be careful when separating the base cover. Do not force apart the base cover, otherwise the cover hooks could be damaged.



Step	Screw (quantity)	Color	Torque
1	M2.0 x 5.5 mm, Phillips-head, nylok-coated (4) D cover to C cover	Black	1.8-2.0 kg_cm

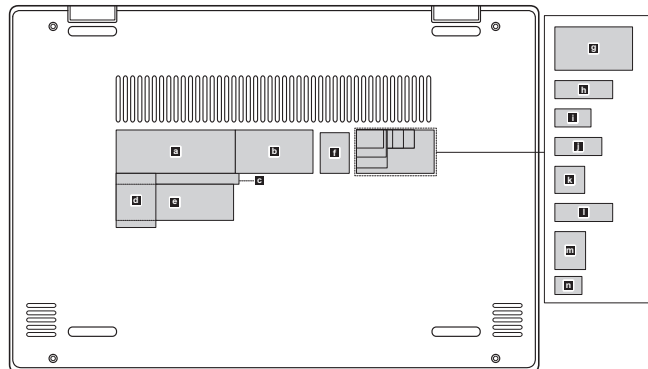
Note: Applying labels to the base cover

If you see the following labels on the base cover, it needs to be peeled off from the old base cover, and put on the new base cover.

- a** Rating label
- b** Rating print label
- c** Taiwan warning label
- d** India BIS label
- e** Adapter label
- f** Windows label
- g** Korea KCC label
- h** Canada/Taiwan/USA label
- i** South Africa label
- j** Israel label
- k** Brazil label
- l** Indonesia label
- m** China office label
- n** Malaysia label

For some models, you also need to apply one or two FCC labels. Check the old base cover; if it has one or two FCC labels, find duplicates of them in the label kit and apply them to the new base cover.

For the location of each label, refer to the following figure:



1020 Battery pack

For access, remove this FRU:

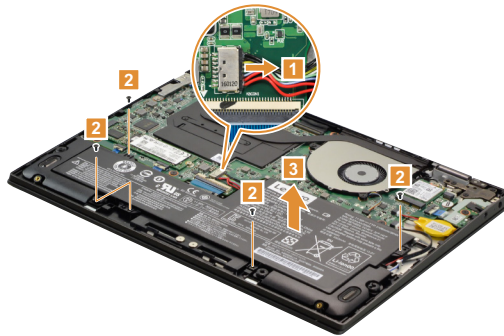
- “1010 Base cover” on page 31

⚠ DANGER

Only use the battery specified in the parts list for your computer. Any other battery could ignite or explode.

Figure 2. Removal steps of battery pack

Unplug the battery connector in the direction shown by arrow **1**. Remove the screws **2**, then remove the battery pack **3**.



Step	Screw (quantity)	Color	Torque
2	M2.0 x 4.0 mm, Phillips-head, nylok-coated (4) Battery to MB	Black	1.8-2.0 kg_cm

When installing: Make sure that the battery connector is attached firmly.

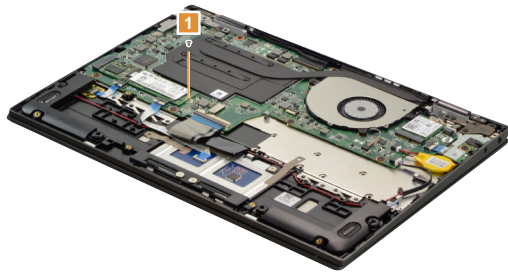
1030 Solid state disk

For access, remove these FRUs in order:

- “1010 Base cover” on page 31
- “1020 Battery pack” on page 33

Figure 3. Removal steps of solid state disk

Remove the screw **1**.



Step	Screw (quantity)	Color	Torque
1	M2.0 x 3.0 mm, Phillips-head, nylok-coated (1) SSD to MB	Silver	1.8-2.0 kg _{cm}

Remove the solid state disk in the direction shown by arrow **2**.



1040 PCI Express Mini Card for wireless LAN

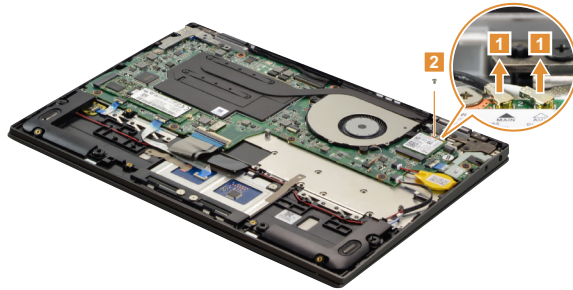
For access, remove these FRUs in order:

- “1010 Base cover” on page 31
- “1020 Battery pack” on page 33

Important: The preinstalled WLAN module may only be replaced with a Lenovo approved module in order to comply with FCC and IC regulations. Refer to “Table 5. Parts list—Overall” on page 60 for Lenovo part numbers for the approved modules.

Figure 4. Removal steps of PCI Express Mini Card for wireless LAN

Disconnect the two wireless LAN cables (black, white) **1**, and then remove the screw **2**.



In step **1**, unplug the jacks by using the removal tool antenna RF connector (P/N: 08K7159), or pick up the connectors with your fingers and gently unplug them in the direction shown by the arrows.

Notes: The wireless LAN card has 2 cables in step **1**.

The wireless LAN card in some models might have 3 cables in step **1**.

Step	Screw (quantity)	Color	Torque
2	M2.0 x 3.0 mm, Phillips-head, nylok-coated (1) WIFI to MB	Silver	1.8-2.0 kg_cm

Figure 4. Removal steps of PCI Express Mini Card for wireless LAN (continued)

Remove the card in the direction shown by arrow **3**.



When installing: When installing the wireless LAN card, plug the black cable into the jack labeled **MAIN** and the white cable into the jack labeled **AUX**.

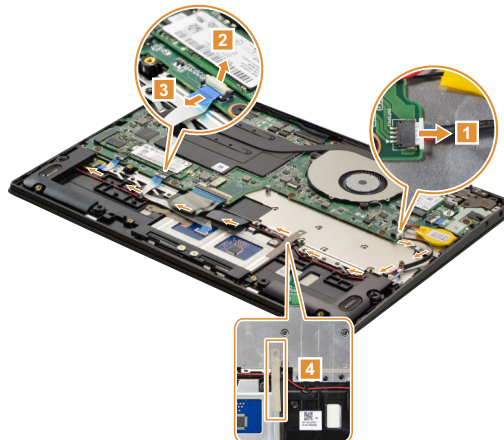
1050 Speakers

For access, remove these FRUs in order:

- “1010 Base cover” on page 31
- “1020 Battery pack” on page 33

Figure 5. Removal steps of speakers

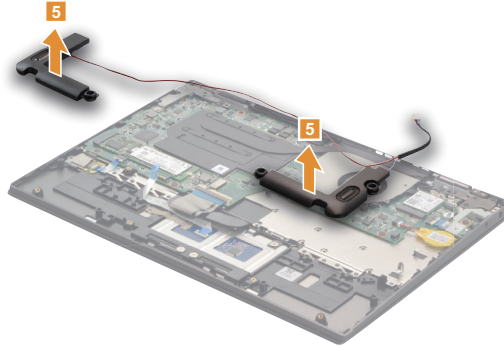
Unplug the speaker connector in the direction shown by arrow **1**. Disconnect the touchpad connector in the directions shown by arrows **2** and **3**. Peel off the tape **4** that secures the cable and release the speaker cable from the cable guides.



When installing: Make sure that the connectors are attached firmly.

Figure 5. Removal steps of speakers (continued)

Remove the two speakers **5**.



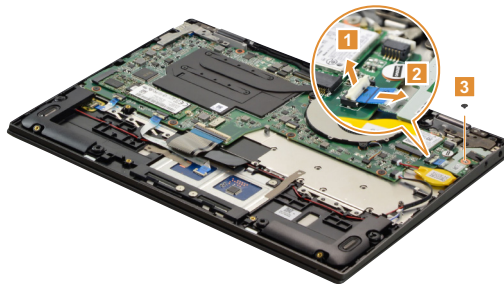
1060 IO board

For access, remove these FRUs in order:

- “1010 Base cover” on page 31
- “1020 Battery pack” on page 33

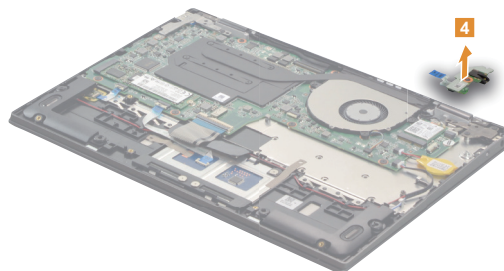
Figure 6. Removal steps of IO board

Detach the IO board connector in the directions shown by arrows **1** and **2**.
Remove the screw **3**.



When installing: Make sure that the connector is attached firmly.

Remove the IO board **4**.



Step	Screw (quantity)	Color	Torque
3	M2.0 x 2.0 mm, Phillips-head, nylok-coated (1) to audio board	Black	1.8-2.0 kg_cm

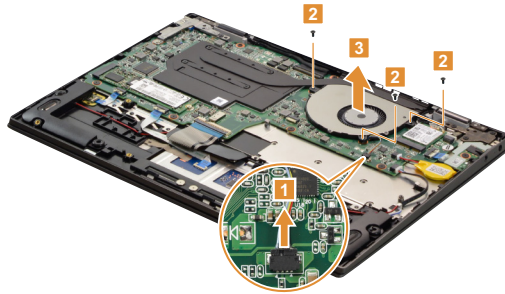
1070 Fan and heat sink assembly

For access, remove these FRUs in order:

- “1010 Base cover” on page 31
- “1020 Battery pack” on page 33

Figure 7. Removal steps of fan and heat sink assembly

Unplug the fan connector in the direction shown by arrow **1**. Remove the screws **2**, then remove the fan in the direction shown by arrow **3**.

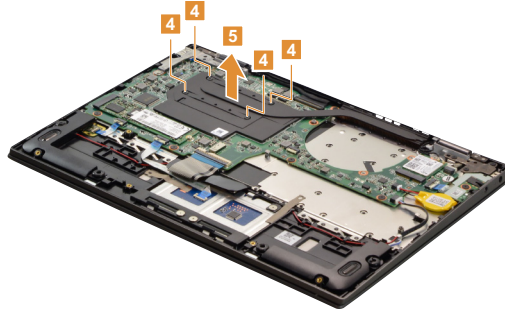


When installing: Make sure that the connector is attached firmly.

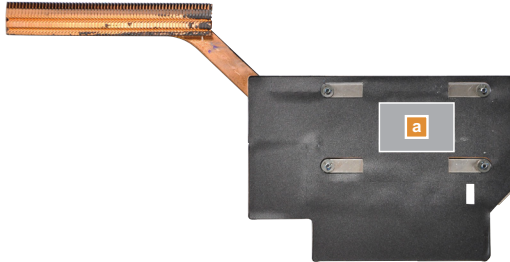
Step	Screw (quantity)	Color	Torque
2	M2.0 x 4.0 mm, Phillips-head, nylok-coated (3) FAN to MB	Black	1.8-2.0 kg_cm

Figure 7. Removal steps of fan and heat sink assembly (continued)

Loosen the screws **4**. Remove the heat sink in the direction shown by arrow **5**.



Attention: Do not handle the heat sink assembly roughly. Improper handling can cause distortion or deformation and imperfect contact with components.



When installing: Before you attach the fan assembly to the computer, apply thermal grease, at an amount of 0.2 grams, to part **a** shown in the figure above. Either too much or too little grease application can cause a thermal problem due to imperfect contact with a component.

1080 System board

Important notices for handling the system board:

When handling the system board, bear the following in mind.

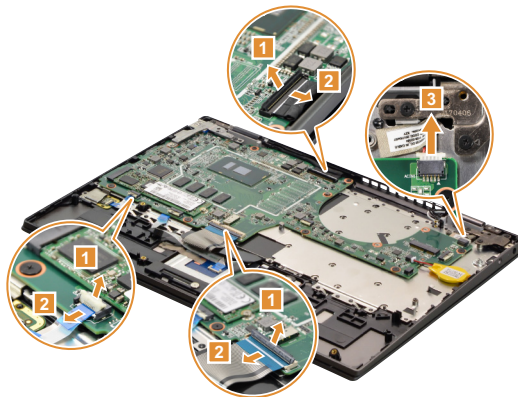
- Be careful not to drop the system board on a bench top that has a hard surface, such as metal, wood, or composite.
- Avoid rough handling of any kind.
- During the whole process, make sure not to drop or stack the system board.
- If you put a system board down, make sure to put it only on a padded surface, such as an ESD mat or conductive corrugated material.

For access, remove these FRUs in order:

- “1010 Base cover” on page 31
- “1020 Battery pack” on page 33
- “1040 PCI Express Mini Card for wireless LAN” on page 35
- “1050 Speakers” on page 37
- “1060 IO board” on page 39
- “1070 Fan and heat sink assembly” on page 40

Figure 8. Removal steps of system board

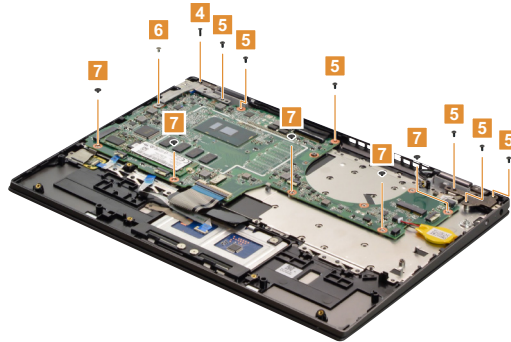
Detach the connectors (keyboard connector, fingerprint connector, LCD connector and DC-in connector) in the directions shown by arrows **1**, **2** and **3**.



When installing: Make sure that the connectors are attached firmly.

Figure 8. Removal steps of system board (continued)

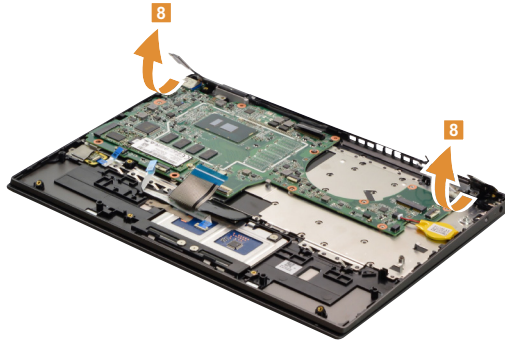
Remove the screws **4**, **5**, **6** and **7**.



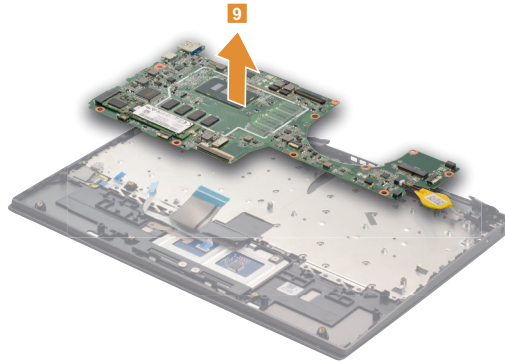
Step	Screw (quantity)	Color	Torque
4	M2.0 x 5.5 mm, Phillips-head, nylok-coated (1) hinge to C cover	Black	1.8-2.0 kg_cm
5	M2.0 x 4.0 mm, Phillips-head, nylok-coated (6) hinge to C cover/MB to C cover	Black	1.8-2.0 kg_cm
6	M2.0 x 3.0 mm, Phillips-head, nylok-coated (1) hinge to MB	Silver	1.8-2.0 kg_cm
7	M2.0 x 2.0 mm, Phillips-head, nylok-coated (5) to MB	Black	1.8-2.0 kg_cm

Figure 8. Removal steps of system board (continued)

Open the hinge in the direction shown by arrows **8**.



Remove the system board **9**.



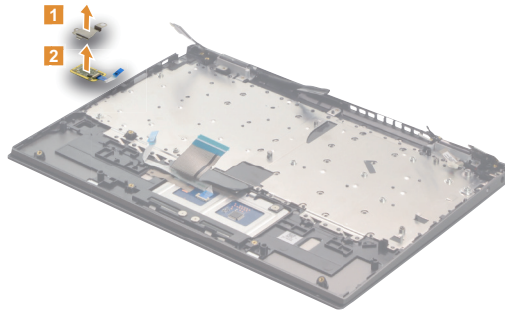
1090 Fingerprint module and DC-in cable

For access, remove these FRUs in order:

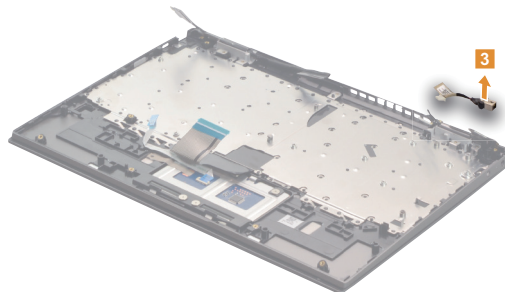
- “1010 Base cover” on page 31
- “1020 Battery pack” on page 33
- “1040 PCI Express Mini Card for wireless LAN” on page 35
- “1050 Speakers” on page 37
- “1060 IO board” on page 39
- “1070 Fan and heat sink assembly” on page 40
- “1080 System board” on page 42

Figure 9. Removal steps of fingerprint module and DC-in cable

Remove the fingerprint bracket **1**. Then remove the fingerprint board **2**.



Remove the DC-in cable in the direction shown by arrow **3**.



1100 LCD unit

For access, remove these FRUs in order:

- “1010 Base cover” on page 31
- “1020 Battery pack” on page 33
- “1040 PCI Express Mini Card for wireless LAN” on page 35
- “1050 Speakers” on page 37
- “1060 IO board” on page 39
- “1070 Fan and heat sink assembly” on page 40
- “1080 System board” on page 42

Figure 10. Removal steps of LCD unit

Rotate the upper case in the direction shown by arrow **1**. Then remove the upper case.



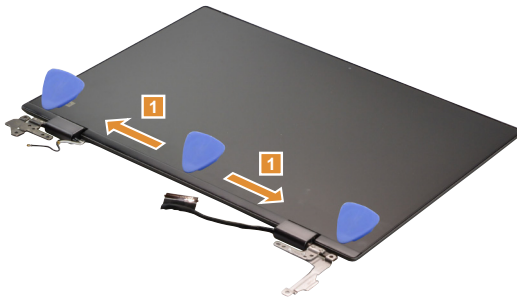
1110 LCD panel

For access, remove these FRUs in order:

- “1010 Base cover” on page 31
- “1020 Battery pack” on page 33
- “1040 PCI Express Mini Card for wireless LAN” on page 35
- “1050 Speakers” on page 37
- “1060 IO board” on page 39
- “1070 Fan and heat sink assembly” on page 40
- “1080 System board” on page 42
- “1100 LCD unit” on page 46

Figure 11. Removal steps of LCD panel

Insert a prying tool and slide it in the directions shown by arrows **1** to separate the hinge cover.



Remove the hinge cover **2**.

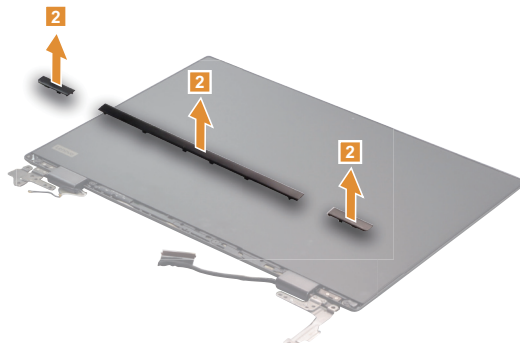
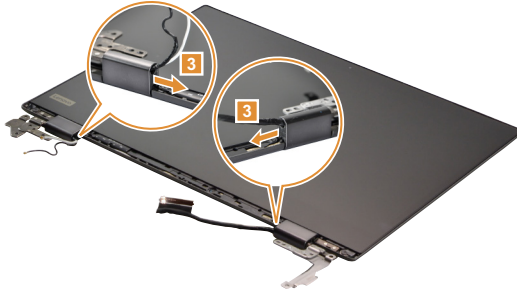


Figure 11. Removal steps of LCD panel (continued)

Remove the hinge rubbers **3**.



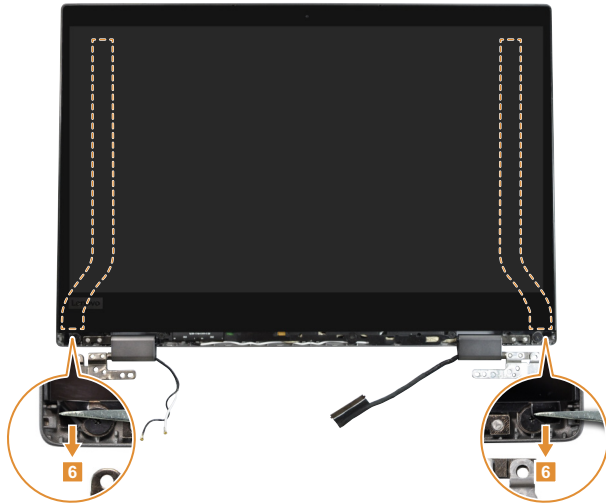
Remove the screws **4** and **5**.



Step	Screw (quantity)	Color	Torque
4	M2.0 × 2.0 mm, Phillips-head, nylok-coated (1) B cover to A cover	Black	1.8-2.0 kg _{cm}
5	M2.0 × 2.5 mm, Phillips-head, nylok-coated (2) B cover to A cover	Black	1.8-2.0 kg _{cm}

Figure 11. Removal steps of LCD panel (continued)

Gently pull out the two pieces of adhesive tape with tweezers in the direction shown by arrows **6**.



Remove the LCD panel in the direction shown by arrows **7**.



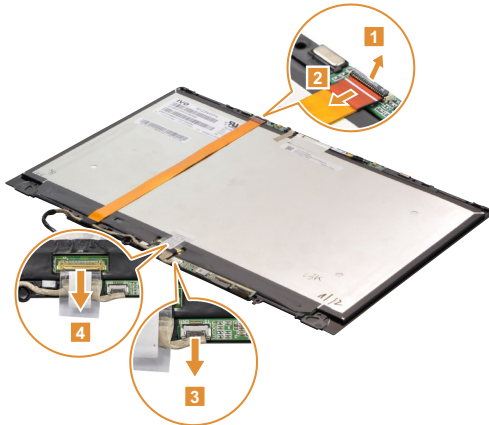
1120 EDP cable

For access, remove these FRUs in order:

- “1010 Base cover” on page 31
- “1020 Battery pack” on page 33
- “1040 PCI Express Mini Card for wireless LAN” on page 35
- “1050 Speakers” on page 37
- “1060 IO board” on page 39
- “1070 Fan and heat sink assembly” on page 40
- “1080 System board” on page 42
- “1100 LCD unit” on page 46
- “1110 LCD panel” on page 47

Figure 12. Removal steps of EDP cable

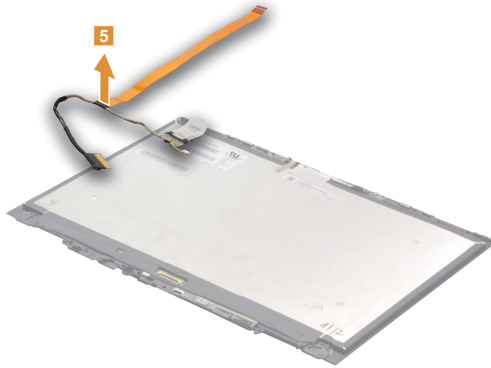
Detach the connector in the direction shown by arrows **1** and **2**. Unplug the connector **3**. Peel off the adhesive tape, then detach the LCD connector **4**.



When installing: Make sure that the connectors are attached firmly.

Figure 12. Removal steps of EDP cable (continued)

Remove the EDP cable **5**.



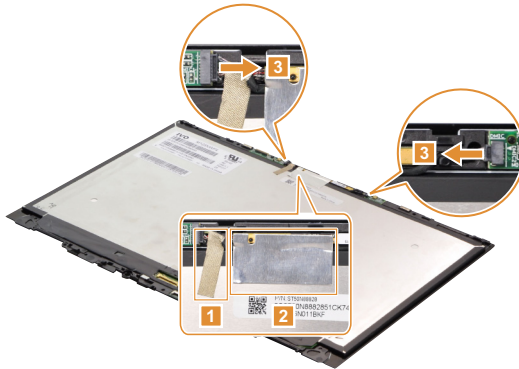
1130 Microphone board and camera board

For access, remove these FRUs in order:

- “1010 Base cover” on page 31
- “1020 Battery pack” on page 33
- “1040 PCI Express Mini Card for wireless LAN” on page 35
- “1050 Speakers” on page 37
- “1060 IO board” on page 39
- “1070 Fan and heat sink assembly” on page 40
- “1080 System board” on page 42
- “1100 LCD unit” on page 46
- “1110 LCD panel” on page 47
- “1120 EDP cable” on page 50

Figure 13. Removal steps of microphone board and camera board

Peel off tape pieces **1** and **2**. Unplug the connectors **3**.



Remove the microphone boards **4**.

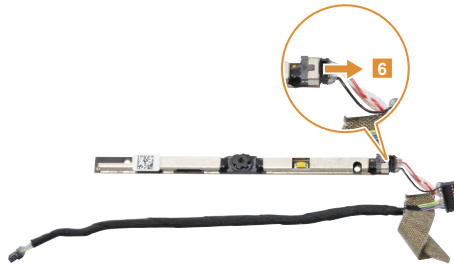


Figure 13. Removal steps of microphone board and camera board (continued)

Remove the camera board **5**.



Turn over the camera board, unplug the connector **6**.



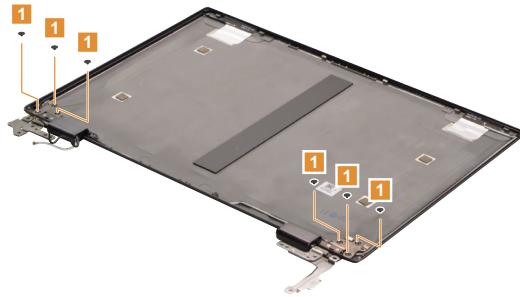
1140 LCD hinges

For access, remove these FRUs in order:

- “1010 Base cover” on page 31
- “1020 Battery pack” on page 33
- “1040 PCI Express Mini Card for wireless LAN” on page 35
- “1050 Speakers” on page 37
- “1060 IO board” on page 39
- “1070 Fan and heat sink assembly” on page 40
- “1080 System board” on page 42
- “1100 LCD unit” on page 46

Figure 14. Removal steps of LCD hinges

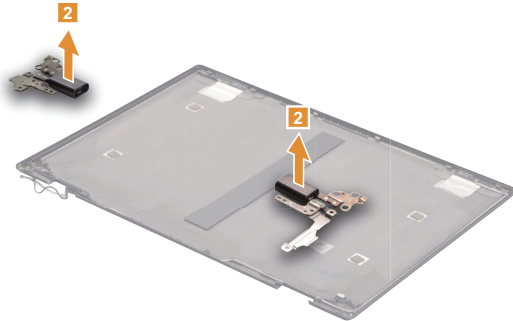
Remove the screws **1**.



Step	Screw (quantity)	Color	Torque
1	M2.0 × 2.0 mm, Phillips-head, nylok-coated (6) hinge to A cover	Black	2.5 ~ 3.0 kg*cm

Figure 14. Removal steps of LCD hinges (continued)

Then release the hinges in the direction shown by arrows **2**.



Locations

Front and right-side view

- 1 Integrated camera
- 2 Built-in microphone
- 3 Wireless LAN antennas
- 4 Multi-touch screen
- 5 USB 3.0 port
- 6 Type-C port
- 7 Novo button
- 8 Power button
- 9 Fingerprint reader
- 10 Touchpad

Note: For the description of each indicator, see “Status indicators” on page 27.



Bottom and left-side view

- 1 Louvers
- 2 Speakers
- 3 AC power adapter jack
- 4 Battery status indicator

Note: For the description of each indicator, see “Status indicators” on page 27.

- 5 Combo audio jack



Parts list

This section presents the following service parts:

- “Overall” on page 59
- “LCD FRUs” on page 64
- “Miscellaneous parts” on page 65
- “AC adapters” on page 66
- “Screws” on page 66

Notes:

- Each FRU is available for all types or models, unless specific types or models are specified.

Attention:

Do not attempt to replace an FRU on your own. If an FRU is damaged, contact a Lenovo authorized servicer or a marketing representative for replacement or repair. Only qualified technicians can inspect or repair this product.

Overall

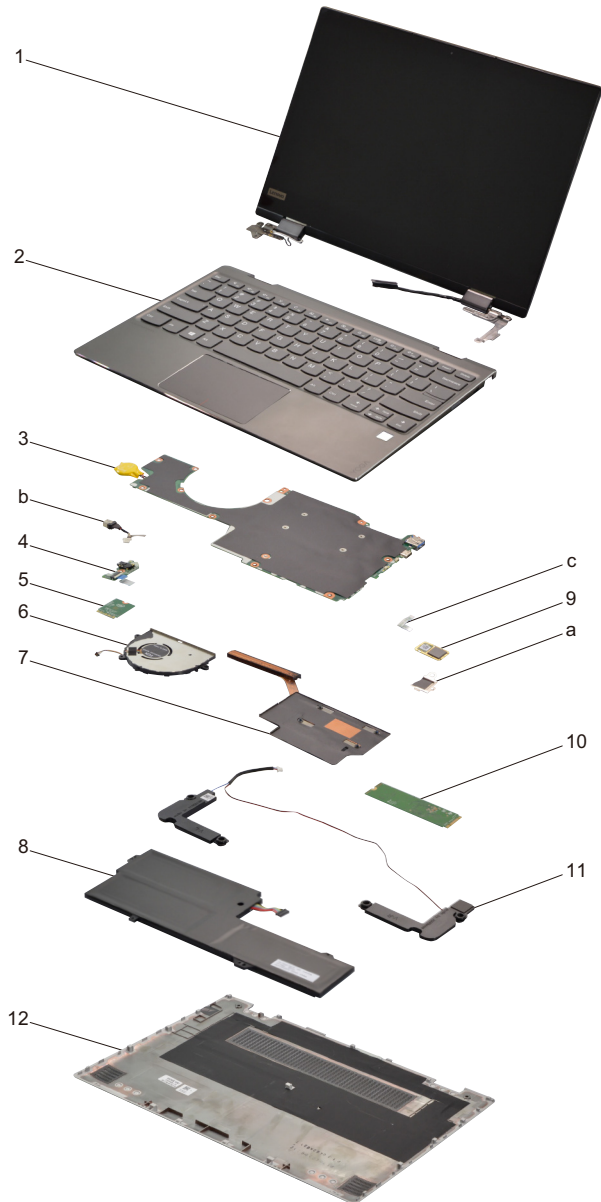


Table 5. Parts list—Overall

No.	FRU	FRU no.	CRU ID.
a-c	see "Miscellaneous parts" on page 65.		
1	LCD unit (see "LCD FRUs" on page 64.)		
2	Upper Case B 81B5 BL IG W/KB AR	5CB0Q12160	N
2	Upper Case B 81B5 BL IG W/KB BE	5CB0Q12139	N
2	Upper Case B 81B5 BL IG W/KB BZ	5CB0Q12284	N
2	Upper Case B 81B5 BL IG W/KB BU	5CB0Q12110	N
2	Upper Case B 81B5 BL IG W/KB CZ-SK	5CB0Q12181	N
2	Upper Case B 81B5 BL IG W/KB NL	5CB0Q12195	N
2	Upper Case B 81B5 BL IG W/KB US	5CB0Q12240	N
2	Upper Case B 81B5 BL IG W/KB CE-F	5CB0Q12114	N
2	UpperCase B 81B5 BL IG W/KBUSINT'E	5CB0Q12222	N
2	Upper Case B 81B5 BL IG W/KB UK	5CB0Q12161	N
2	Upper Case B 81B5 BL IG W/KB FR	5CB0Q12113	N
2	Upper Case B 81B5 BL IG W/KB FR-AR	5CB0Q12188	N
2	Upper Case B 81B5 BL IG W/KB GR	5CB0Q12140	N
2	Upper Case B 81B5 BL IG W/KB GK	5CB0Q12185	N
2	Upper Case B 81B5 BL IG W/KB HB	5CB0Q12258	N
2	Upper Case B 81B5 BL IG W/KB INIDA	5CB0Q12144	N
2	Upper Case B 81B5 BL IG W/KB HG	5CB0Q12212	N
2	Upper Case B 81B5 BL IG W/KB ICE	5CB0Q12157	N
2	Upper Case B 81B5 BL IG W/KB IT	5CB0Q12121	N
2	Upper Case B 81B5 BL IG W/KB JP	5CB0Q12128	N
2	Upper Case B 81B5 BL IG W/KB KO	5CB0Q12151	N
2	Upper Case B 81B5 BL IG W/KB LA	5CB0Q12177	N
2	Upper Case B 81B5 BL IG W/KB ND	5CB0Q12189	N
2	Upper Case B 81B5 BL IG W/KB PO	5CB0Q12263	N
2	Upper Case B 81B5 BL IG W/KB RU	5CB0Q12215	N
2	Upper Case B 81B5 BL IG W/KB SA	5CB0Q12117	N
2	Upper Case B 81B5 BL IG W/KB SP	5CB0Q12246	N
2	Upper Case B 81B5 BL IG W/KB SW	5CB0Q12265	N
2	Upper Case B 81B5 BL IG W/KB CH	5CB0Q12272	N
2	Upper Case B 81B5 BL IG W/KB TI	5CB0Q12190	N
2	Upper Case B 81B5 BL IG W/KB TR	5CB0Q12123	N
2	Upper Case B 81B5 BL IG W/KB UKR	5CB0Q12260	N
2	Upper Case B 81B5 BL IG W/KB USA	5CB0Q12259	N
2	Upper Case B 81B5 BL PTN W/KB AR	5CB0Q12262	N
2	Upper Case B 81B5 BL PTN W/KB BE	5CB0Q12247	N
2	Upper Case B 81B5 BL PTN W/KB BZ	5CB0Q12127	N
2	Upper Case B 81B5 BL PTN W/KB BU	5CB0Q12118	N
2	UpperCase B 81B5 BL PTN W/KB CZ-SK	5CB0Q12204	N
2	Upper Case B 81B5 BL PTN W/KB NL	5CB0Q12122	N
2	Upper Case B 81B5 BL PTN W/KB US	5CB0Q12201	N
2	Upper Case B 81B5 BL PTN W/KB CE-F	5CB0Q12223	N
2	UpperCaseB81B5BL PTN W/KB US INT'E	5CB0Q12213	N
2	Upper Case B 81B5 BL PTN W/KB UK	5CB0Q12146	N
2	Upper Case B 81B5 BL PTN W/KB FR	5CB0Q12275	N
2	UpperCase B 81B5 BL PTN W/KB FR-AR	5CB0Q12244	N
2	Upper Case B 81B5 BL PTN W/KB GR	5CB0Q12250	N
2	Upper Case B 81B5 BL PTN W/KB GK	5CB0Q12206	N

Table 5. Parts list—Overall (continued)

No.	FRU	FRU no.	CRU ID.
2	Upper Case B 81B5 BL PTN W/KB HE	5CB0Q12266	N
2	UpperCase B 81B5 BL PTN W/KB INIDA	5CB0Q12254	N
2	Upper Case B 81B5 BL PTN W/KB HG	5CB0Q12173	N
2	Upper Case B 81B5 BL PTN W/KB ICE	5CB0Q12245	N
2	Upper Case B 81B5 BL PTN W/KB IT	5CB0Q12138	N
2	Upper Case B 81B5 BL PTN W/KB JP	5CB0Q12282	N
2	Upper Case B 81B5 BL PTN W/KB KO	5CB0Q12209	N
2	Upper Case B 81B5 BL PTN W/KB LA	5CB0Q12180	N
2	Upper Case B 81B5 BL PTN W/KB ND	5CB0Q12153	N
2	Upper Case B 81B5 BL PTN W/KB PO	5CB0Q12278	N
2	Upper Case B 81B5 BL PTN W/KB RU	5CB0Q12184	N
2	Upper Case B 81B5 BL PTN W/KB SA	5CB0Q12174	N
2	Upper Case B 81B5 BL PTN W/KB SP	5CB0Q12147	N
2	Upper Case B 81B5 BL PTN W/KB SW	5CB0Q12164	N
2	Upper Case B 81B5 BL PTN W/KB CH	5CB0Q12143	N
2	Upper Case B 81B5 BL PTN W/KB TI	5CB0Q12178	N
2	Upper Case B 81B5 BL PTN W/KB TR	5CB0Q12283	N
2	Upper Case B 81B5 BL PTN W/KB UKR	5CB0Q12251	N
2	Upper Case B 81B5 BL PTN W/KB USA	5CB0Q12219	N
2	Upper Case B 81B5 NBL IG W/KB AR	5CB0Q12159	N
2	Upper Case B 81B5 NBL IG W/KB BE	5CB0Q12205	N
2	Upper Case B 81B5 NBL IG W/KB BZ	5CB0Q12261	N
2	Upper Case B 81B5 NBL IG W/KB BU	5CB0Q12264	N
2	UpperCase B 81B5 NBL IG W/KB CZ-SK	5CB0Q12255	N
2	Upper Case B 81B5 NBL IG W/KB NL	5CB0Q12176	N
2	Upper Case B 81B5 NBL IG W/KB US	5CB0Q12154	N
2	Upper Case B 81B5 NBL IG W/KB CE-F	5CB0Q12214	N
2	UpperCaseB81B5NBL IG W/KB US INTE	5CB0Q12130	N
2	Upper Case B 81B5 NBL IG W/KB UK	5CB0Q12135	N
2	Upper Case B 81B5 NBL IG W/KB FR	5CB0Q12231	N
2	UpperCase B 81B5 NBL IG W/KB FR-AR	5CB0Q12150	N
2	Upper Case B 81B5 NBL IG W/KB GR	5CB0Q12267	N
2	Upper Case B 81B5 NBL IG W/KB GK	5CB0Q12192	N
2	Upper Case B 81B5 NBL IG W/KB HB	5CB0Q12216	N
2	UpperCase B 81B5 NBL IG W/KB INIDA	5CB0Q12142	N
2	Upper Case B 81B5 NBL IG W/KB HG	5CB0Q12168	N
2	Upper Case B 81B5 NBL IG W/KB ICE	5CB0Q12221	N
2	Upper Case B 81B5 NBL IG W/KB IT	5CB0Q12211	N
2	Upper Case B 81B5 NBL IG W/KB JP	5CB0Q12141	N
2	Upper Case B 81B5 NBL IG W/KB KO	5CB0Q12134	N
2	Upper Case B 81B5 NBL IG W/KB LA	5CB0Q12194	N
2	Upper Case B 81B5 NBL IG W/KB ND	5CB0Q12170	N
2	Upper Case B 81B5 NBL IG W/KB PO	5CB0Q12156	N
2	Upper Case B 81B5 NBL IG W/KB RU	5CB0Q12129	N
2	Upper Case B 81B5 NBL IG W/KB SA	5CB0Q12137	N
2	Upper Case B 81B5 NBL IG W/KB SP	5CB0Q12252	N
2	Upper Case B 81B5 NBL IG W/KB SW	5CB0Q12269	N
2	Upper Case B 81B5 NBL IG W/KB CH	5CB0Q12257	N
2	Upper Case B 81B5 NBL IG W/KB TI	5CB0Q12249	N

Table 5. Parts list—Overall (continued)

No.	FRU	FRU no.	CRU ID.
2	Upper Case B 81B5 NBL IG W/KB TR	5CB0Q12167	N
2	Upper Case B 81B5 NBL IG W/KB UKR	5CB0Q12218	N
2	Upper Case B 81B5 NBL PTN W/KB AR	5CB0Q12165	N
2	Upper Case B 81B5 NBL PTN W/KB BE	5CB0Q12132	N
2	Upper Case B 81B5 NBL PTN W/KB BZ	5CB0Q12131	N
2	Upper Case B 81B5 NBL PTN W/KB BU	5CB0Q12233	N
2	UpperCaseB 81B5 NBL PTN W/KB CZ-SK	5CB0Q12274	N
2	Upper Case B 81B5 NBL PTN W/KB NL	5CB0Q12120	N
2	Upper Case B 81B5 NBL PTN W/KB US	5CB0Q12203	N
2	UpperCase B 81B5 NBL PTN W/KB CE-F	5CB0Q12280	N
2	UpperCaseB81B5 NBL PTNW/KBUS INT'E	5CB0Q12277	N
2	Upper Case B 81B5 NBL PTN W/KB UK	5CB0Q12202	N
2	Upper Case B 81B5 NBL PTN W/KB FR	5CB0Q12256	N
2	UpperCase B 81B5NBL PTN W/KB FR-AR	5CB0Q12196	N
2	Upper Case B 81B5 NBL PTN W/KB GR	5CB0Q12270	N
2	Upper Case B 81B5 NBL PTN W/KB GK	5CB0Q12193	N
2	Upper Case B 81B5 NBL PTN W/KB HB	5CB0Q12183	N
2	UpperCase B 81B5 NBL PTN W/KBINIDA	5CB0Q12186	N
2	Upper Case B 81B5 NBL PTN W/KB HG	5CB0Q12243	N
2	Upper Case B 81B5 NBL PTN W/KB ICE	5CB0Q12268	N
2	Upper Case B 81B5 NBL PTN W/KB IT	5CB0Q12126	N
2	Upper Case B 81B5 NBL PTN W/KB JP	5CB0Q12241	N
2	Upper Case B 81B5 NBL PTN W/KB KO	5CB0Q12145	N
2	Upper Case B 81B5 NBL PTN W/KB LA	5CB0Q12242	N
2	Upper Case B 81B5 NBL PTN W/KB ND	5CB0Q12229	N
2	Upper Case B 81B5 NBL PTN W/KB PO	5CB0Q12281	N
2	Upper Case B 81B5 NBL PTN W/KB RU	5CB0Q12175	N
2	Upper Case B 81B5 NBL PTN W/KB SA	5CB0Q12169	N
2	Upper Case B 81B5 NBL PTN W/KB SP	5CB0Q12124	N
2	Upper Case B 81B5 NBL PTN W/KB SW	5CB0Q12228	N
2	Upper Case B 81B5 NBL PTN W/KB CH	5CB0Q12248	N
2	Upper Case B 81B5 NBL PTN W/KB TI	5CB0Q12163	N
2	Upper Case B 81B5 NBL PTN W/KB TR	5CB0Q12182	N
2	Upper Case B 81B5 NBL PTN W/KB UKR	5CB0Q12220	N
3	MB B 81B5 WIN 4415U UMA 4G BL	5B20Q12253	N
3	MB B 81B5 WIN 4415U UMA 8G BL	5B20Q12271	N
3	MB B 81B5 WIN 4415U UMA 12G BL	5B20Q12136	N
3	MB B 81B5 WIN I37100U UMA 4G BL	5B20Q12235	N
3	MB B 81B5 WIN I37100U UMA 8G BL	5B20Q12238	N
3	MB B 81B5 WIN I37100U UMA 12GBL	5B20Q12187	N
3	MB B 81B5 WIN I57200U UMA 4G BL	5B20Q12197	N
3	MB B 81B5 WIN I57200U UMA 8G BL	5B20Q12234	N
3	MB B 81B5 WIN I57200U UMA 12GBL	5B20Q12191	N
3	MB B 81B5 WIN I77500U UMA 4G BL	5B20Q12115	N
3	MB B 81B5 WIN I77500U UMA 8G BL	5B20Q12162	N
3	MB B 81B5 WIN I77500U UMA12G BL	5B20Q12112	N
3	MB B 81B5 WIN 4415U UMA 4G NBL	5B20Q12108	N
3	MB B 81B5 WIN 4415U UMA 8G NBL	5B20Q12227	N
3	MB B 81B5 WIN 4415U UMA 12G NBL	5B20Q12155	N

Table 5. Parts list—Overall (continued)

No.	FRU	FRU no.	CRU ID.
3	MB B 81B5 WIN I37100U UMA 4GNBL	5B20Q12217	N
3	MB B 81B5 WIN I37100U UMA 8GNBL	5B20Q12207	N
3	MB B 81B5 WINI37100U UMA 12GNBL	5B20Q12148	N
3	MB B 81B5 WIN I57200U UMA 4GNBL	5B20Q12116	N
3	MB B 81B5 WIN I57200U UMA 8GNBL	5B20Q12172	N
3	MB B 81B5 WIN I57200U UMA12GNBL	5B20Q12111	N
3	MB B 81B5 WIN I77500U UMA 4GNBL	5B20Q12225	N
3	MB B 81B5 WIN I77500U UMA 8GNBL	5B20Q12210	N
3	MB B 81B5 WIN I77500U UMA12GNBL	5B20Q12198	N
4	Audio Board B 81B5 W/Cable	5C50Q12149	N
5	WLAN, Intel 8265 2x2AC+BT PCIE M.2 WLAN NV	SW10K97453	**
5	WLAN, Ltn NFA344A 2x2AC+BT4.x PCIE M.2 WLAN	SW10K97465	**
5	WLAN, Intel 3165 1x1AC+BT PCIE M.2 WLAN	SW10H24486	**
5	WLAN, RTL8821CE 1x1AC+BT4.2 Combo M.2 BS	SW10K97462	**
5	WLAN, Ltn NFA435A 1x1AC+BT4.0 PCIE M.2 WLAN	SW10K97461	**
6	Fan B 81B5	5F10Q12179	N
7	Heatsink B 81B5	5H40Q12226	N
8	Battery, Yoga520-12/320-11/320S-13 SP/A L17M3P61 11.52V36Wh3cell bty	5B10N87358	N
8	Battery, Yoga520-12/320-11/320S-13 CP/C L17C3P61 11.52V36Wh3cell bty	5B10N87359	N
8	Battery, Yoga520-12/320-11/320S-13 LG L17L3P61 11.58V36Wh3cell bty	5B10N87357	N
9	FPR Board B 81B5 W/Cable PTN	5F30Q12133	N
9	FPR Board B 81B5 W/Cable IG	5F30Q12276	N
10	SSD, Hynix HFS128G39TND-N210A M.2 128GB SSD	5SD0L07408	**
10	SSD, Liteon CV3-8D128 M.2 2280128G SSD	5SD0L02318	**
10	SSD, Hynix SC313 128GB M.2 2280 SSD	SSS0Q25533	**
10	SSD, Hynix HFS256G39TND-N210A M.2 256GB SSD	5SD0L07410	**
10	SSD, Liteon CV3-8D256 M.2 2280 256G SSD	5SD0L02320	**
10	SSD, Hynix SC313 256GB M.2 2280 SSD	SSS0Q25534	**
10	SSD, Hynix HFS512G39TND-N210A M.2 512GB SSD	5SD0L07409	**
10	SSD, Hynix SC313 512GB M.2 2280 SSD	SSS0Q25532	**
11	Speaker, Yoga520-12 Veco 1020 Speaker	5SB0M65356	N
12	Lower Case B 81B5 IG	5CB0Q12239	**
12	Lower Case B 81B5 PTN	5CB0Q12230	**
—	AC adapter (see "AC adapters" on page 66).		

LCD FRUs

In Lenovo YOGA 720-12IKB, there are following types of LCDs.

- “12.5-in. FHD LED”

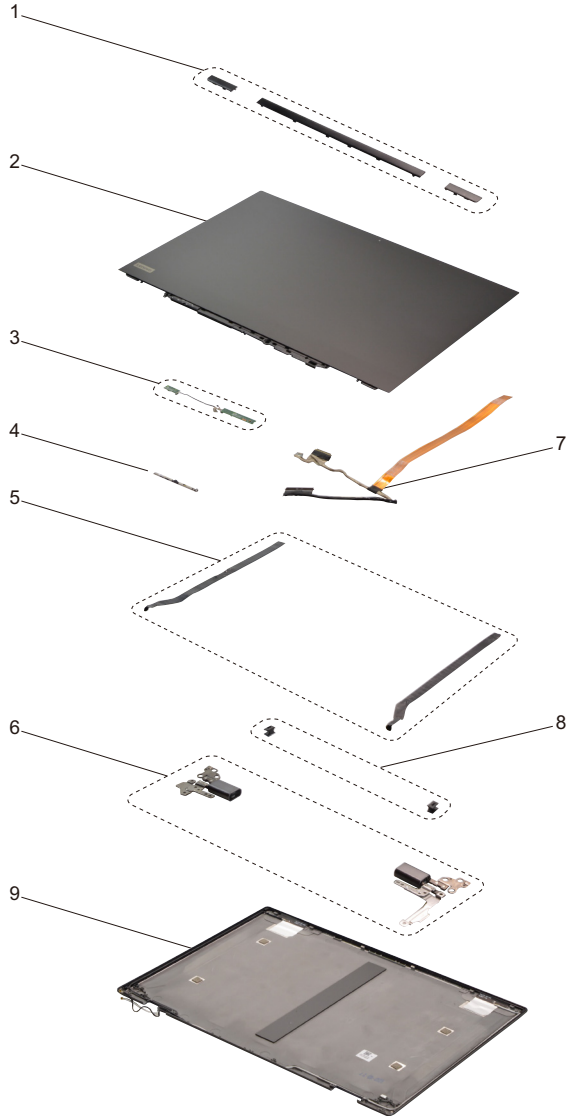


Table 6. Parts list—LCD FRUs

No.	FRU	FRU no.	CRU ID.
1	Hinge Cover B 81B5 Black Middle	5CB0Q12152	N
1	Hinge Cover B 81B5 Black Left	5CB0Q12273	N
1	Hinge Cover B 81B5 Black Right	5CB0Q12232	N
2	LCDModuleB 81B5W/ControlBoardFHD	5D10P94922	N
3	Dual MIC Board B 81B5 L+R	5C50Q12125	N
4	Camera B 81B5 720P	5C20Q12166	N
5	Removable Tape B 81B5	5T10Q12279	N
6	Hinge B 81B5 L+R IG	5H50Q12208	N
6	Hinge B 81B5 L+R PTN	5H50Q12237	N
7	EDP/MIC Cable B 81B5	5C10Q12109	N
8	Hinge Rubber B 81B5	5R60Q12224	N
9	LCD Cover B 81B5 IG	5CB0Q12158	N
9	LCD Cover B 81B5 PTN	5CB0Q12200	N

Miscellaneous parts

Table 7. Parts list—Miscellaneous parts

FRU	P/N	CRU ID.
System miscellaneous parts:		
• (a) FPR Bracket B 81B5	5B40Q12119	N
Cable miscellaneous parts:		
• (b) DC-IN Cable B 81B5	5C10Q12199	N
• (c) Fingerprint to MB Cable B 81B5	5C10Q15251	N
Note: Italicized letters in parentheses are references to the exploded view in “Overall” on page 59.		

AC adapters

Table 8. Parts list—AC adapters

FRU	P/N	CRU ID.
Delta ADP-45DW A 20V2.25A COO	SA10M42800	*
Delta ADP-45DW J 20V2.25A COO	SA10M42721	*
Delta ADP-45DW B 20V2.25A COO	SA10M42785	*
Delta ADP-45DW D 20V2.25A COO	SA10M42696	*
Delta ADP-45DW H 20V2.25A COO	SA10M42699	*
Delta ADP-45DW G 20V2.25A COO	SA10M42774	*
Delta ADP-45DW E 20V2.25A COO	SA10M42748	*
Delta ADP-45DW C 20V2.25A COO	SA10M42700	*
Delta ADP-45DW K 20V2.25A COO	SA10M42804	*
Liteon PA-1450-55LN 20V2.25A COO	SA10M42711	*
Liteon PA-1450-55LG 20V2.25A COO	SA10M42709	*
Liteon PA-1450-55LL 20V2.25A COO	SA10M42742	*
Liteon PA-1450-55LK 20V2.25A COO	SA10M42530	*
Liteon PA-1450-55LI 20V2.25A COO	SA10M42734	*
Liteon PA-1450-55LR 20V2.25A COO	SA10M42701	*
Liteon PA-1450-55LS 20V2.25A COO	SA10M42736	*
Liteon PA-1450-55LU 20V2.25A COO	SA10M42743	*
Liteon PA-1450-55LZ 20V2.25A COO	SA10M42752	*
Chicony ADL45WCA 20V2.25A COO	SA10M42726	*
Chicony ADL45WCB 20V2.25A COO	SA10M42737	*
Chicony ADL45WCC 20V2.25A COO	SA10M42697	*
Chicony ADL45WCD 20V2.25A COO	SA10M42790	*
Chicony ADL45WCK 20V2.25A COO	SA10M42768	*
Chicony ADL45WCE 20V2.25A COO	SA10M42706	*
Chicony ADL45WCF 20V2.25A COO	SA10M42746	*
Chicony ADL45WCG 20V2.25A COO	SA10M42792	*
Chicony ADL45WCH 20V2.25A COO	SA10M42786	*
Delta ADLX65NDC3A 20V3.25A RCOO	SA10M42715	*
Liteon ADLX65NLC3A 20V3.25A R	5A10J40449	*
Chicony ADLX65NCC3A 20V3.25A RCOO	SA10M42747	*

Screws

Table 9. Parts list—Screws

FRU	P/N	CRU ID.
Screw Pack B 81B5 IG	5S10Q12171	N
Screw Pack B 81B5 PTN	5S10Q12236	N

Power cords

A Lenovo power cord for a specific country or region is usually available only in that country or region:

Table 10. Parts list—3-pin power cords

Region	P/N	CRU ID.
CHINA • LINETEK PC323+RVV300/300+LS15 1m	145000600	*
ARGENTINA • LINETEK LS15+H03VV-F+LP39 1m	145000599	*
SWITZERLAND • LINETEK LS15+H03VV-F+LP-37 1m	145000597	*
BRAZIL • LINETEK LS15 H03VV-F LP26A 1m	145000596	*
ISRAEL • LINETEK LS15+H03VV-F+LP-41 1m	145000595	*
CANADA, LA GROUP, LA_GROUP, PHILIPPINES, USA • LINETEK LP-30B + SPT-2 + LS15 1m	145000594	*
BANGLADESH, CYPRUS, EGYPT, EMAT_UK, EMAT-UK, HONG_KONG, HONGKONG, IRELAND, MALAYSIA, SAUDI ARABIA, SAUDI_ARABIA, SINGAPORE, SRI LANKA, SRI_LANKA, UNITED ARAB EMIRATES, UNITED KINGDOM, UNITED_ARAB_EMIRATES, UNITED_KINGDOM • LINETEK LP-61L+ H03VV-F+ LS15 1m	145000593	*
INDIA, SRI LANKA, SRI_LANKA • LINETEK PE-361+ H05VV-F+ LS15 1m	145000592	*
CHILE, ITALY • LINETEK LS15+H03VV-F+PE-336 1m	145000591	*
KOREA • LINETEK LS15+H05VV-F+LP-E04A 1m	145000590	*
AUSTRALIA, NEW ZEALAND, NEW_ZEALAND • LINETEK LS15+H03VV-F+LP-23A 1m	145000589	*
TAIWAN • LINETEK LS15+VCTF+LP-53 1m	145000588	*
JAPAN • LINETEK LS15+VCTF+LP-54 1m	145000587	*
NEPAL, PAKISTAN, SOUTH AFRICA, SOUTH_AFRICA • LINETEK LS15+H03VV-F+PE-364 1m	145000586	*
AUSTRIA, AZERBAIJAN, BALTIC, BELARUS, BELGIUM, BULGARIA, CROATIA_SLOVENIA, CROATIA-SLOVENIA, CZECH_SLOVAKIA, CZECH-SLOVAKIA, EGYPT, EMAT_FR, EMAT_PO, EMAT-FR, EMAT-PO, FRANCE, GEORGIA, GERMANY, GREECE, HUNGARY, ICELAND, INDONESIA, KAZAKHSTAN, KAZAKSTAN, LUXEMBOURG, MOLDOVA, NETHERLANDS, NORDICS, POLAND, PORTUGAL, ROMANIA, RUSSIA, SERBIA, SPAIN, TURKEY, TURKMENISTAN, UKRAINE, UNITED ARAB EMIRATES, UNITED_ARAB_EMIRATES, VIETNAM • LINETEK LP-34+H03VV-F + LS15 1m	145000585	*

Table 10. Parts list—3-pin power cords (continued)

Region	P/N	CRU ID.
CHINA • Longwell LSG-31+RVV300/300+LS-18 1m	145000568	*
ARGENTINA • Longwell LP-24+H03VV-F+LS-18 1m	145000567	*
SWITZERLAND • Longwell LP-37+H03VV-F+LS-18 1m	145000565	*
BRAZIL • Longwell LP-46+H03VV-F+LS-18 1m	145000564	*
ISRAEL • Longwell LP-41+H03VV-F+LS-18 1m	145000563	*
CANADA, LA GROUP, LA_GROUP, PHILIPPINES, USA • Longwell LP-30B+SPT-2 18AWG+LS-18 1m	145000562	*
BANGLADESH, CYPRUS, EGYPT, EMAT_UK, EMAT-UK, HONG_KONG, HONGKONG, IRELAND, MALAYSIA, SAUDI ARABIA, SAUDI_ARABIA, SINGAPORE, SRI LANKA, SRI_LANKA, UNITED ARAB EMIRATES, UNITED KINGDOM, UNITED_ARAB_EMIRATES, UNITED_KINGDOM • Longwell LP-61L+H03VV-F+LS-18 1m	145000561	*
INDIA, SRI LANKA, SRI_LANKA • Longwell LP-67+BIS+LS-18 1m	145000560	*
CHILE, ITALY • Longwell LP-22+H03VV-F+LS-18 1m	145000559	*
KOREA • Longwell LP-486+KTLH03VV-F+LS-5 1m	145000558	*
AUSTRALIA, NEW ZEALAND, NEW_ZEALAND • Longwell LP-23A+LFC-3R+LS-18 1m	145000557	*
TAIWAN • Longwell LP-71+VCTF+LS-33 1m	145000556	*
JAPAN • Longwell LP-54+VCTF+LS-18 1m	145000555	*
NEPAL, PAKISTAN, SOUTH AFRICA, SOUTH_AFRICA • Longwell LP-39+H03VV-F+LS-18 1m	145000554	*
AUSTRIA, AZERBAIJAN, BALTIC, BELARUS, BELGIUM, BULGARIA, CROATIA_SLOVENIA, CROATIA-SLOVENIA, CZECH_SLOVAKIA, CZECH-SLOVAKIA, EGYPT, EMAT_FR, EMAT_PO, EMAT-FR, EMAT-PO, FRANCE, GEORGIA, GERMANY, GREECE, HUNGARY, ICELAND, INDONESIA, KAZAKHSTAN, KAZAKSTAN, LUXEMBOURG, MOLDOVA, NETHERLANDS, NORDICS, POLAND, PORTUGAL, ROMANIA, RUSSIA, SERBIA, SPAIN, TURKEY, TURKMENISTAN, UKRAINE, UNITED ARAB EMIRATES, UNITED_ARAB_EMIRATES, VIETNAM • Longwell LP-34A+H03VV-F+LS-18 1m	145000553	*
CHINA • VOLEX GB10S3+RVV 300/500+VAC5S 1m	145000538	*
ARGENTINA • VOLEX VA2073+H03VV-F+VAC5S 1m	145000528	*

Table 10. Parts list—3-pin power cords (continued)

Region	P/N	CRU ID.
SWITZERLAND • VOLEX MP232+H03VV-F+VAC5S 1m	145000524	*
BRAZIL • VOLEX CH10S3+H03VV-F+VAC5S 1m	145000527	*
ISRAEL • VOLEX SI16S3+H03VV-F+VAC5S 1m	145000526	*
CANADA, LA GROUP, LA_GROUP, PHILIPPINES, USA • Volex US15S3+SPT-2+VAC5S 1m	145000537	*
BANGLADESH, CYPRUS, EGYPT, EMAT_UK, EMAT-UK, HONG_KONG, HONGKONG, IRELAND, MALAYSIA, SAUDI ARABIA, SAUDI_ARABIA, SINGAPORE, SRI LANKA, SRI_LANKA, UNITED ARAB EMIRATES, UNITED KINGDOM, UNITED_ARAB_EMIRATES, UNITED_KINGDOM • VOLEX MP5004+H03VV-F+VAC5S 1m	145000605	*
CHILE, ITALY • VOLEX IT10S3+HO3VV-F+VAC5S 1m	145000535	*
KOREA • VOLEX M2511+KETI IEC+VAC5S 1m	145000533	*
AUSTRALIA, NEW ZEALAND, NEW_ZEALAND • VOLEX AU10S3+H03VV-F+VAC5S 1m	145000532	*
TAIWAN • VOLEX TW15CS3+VCTF+VAC5S 1m	145000531	*
JAPAN • VOLEX VAC5S+VCTF+M755 1m	145000530	*
AUSTRIA, AZERBAIJAN, BALTIC, BELARUS, BELGIUM, BULGARIA, CROATIA_SLOVENIA, CROATIA-SLOVENIA, CZECH_SLOVAKIA, CZECH-SLOVAKIA, EGYPT, EMAT_FR, EMAT_PO, EMAT-FR, EMAT-PO, FRANCE, GEORGIA, GERMANY, GREECE, HUNGARY, ICELAND, INDONESIA, KAZAKHSTAN, KAZAKSTAN, LUXEMBOURG, MOLDOVA, NETHERLANDS, NORDICS, POLAND, PORTUGAL, ROMANIA, RUSSIA, SERBIA, SPAIN, TURKEY, TURKMENISTAN, UKRAINE, UNITED ARAB EMIRATES, UNITED_ARAB_EMIRATES, VIETNAM • VOLEX M2511+HO3VV-F+VAC5S 1m	145000525	*
CHINA • lux 0036+RVV 300/300 0.75/3C+0002 1m	145500003	*
ARGENTINA • lux 0040+H03VV-F 0.75/3C+0011 1m	145500015	*
SWITZERLAND • lux 0027+H03VV-F 0.75/3C+0011 1m	145500013	*
BRAZIL • lux 0034+H03VV-F 0.75/3C+0011 1m	145500011	*
ISRAEL • lux 0041+H03VV-F 0.75/3C+0011 1m	145500012	*
CANADA, LA GROUP, LA_GROUP, PHILIPPINES, USA • lux 0014+SPT-2 60°C 18/3C+0016 1m	145500002	*

Table 10. Parts list—3-pin power cords (continued)

Region	P/N	CRU ID.
THAILAND • lux 0014+H03VV-F 0.75/3C+0011 1m	5L60J33143	*
BANGLADESH, CYPRUS, EGYPT, EMAT_UK, EMAT-UK, HONG_KONG, HONGKONG, IRELAND, MALAYSIA, SAUDI ARABIA, SAUDI_ARABIA, SINGAPORE, SRI LANKA, SRI_LANKA, UNITED ARAB EMIRATES, UNITED KINGDOM, UNITED_ARAB_EMIRATES, UNITED_KINGDOM • lux 0031+H03VV-F 0.75/3C+0011 1m	145500000	*
INDIA, SRI LANKA, SRI_LANKA • lux 0046+IS694 0.75/3C+0011 1m	145500004	*
CHILE, ITALY • lux 0029+H03VV-F 0.75/3C+0011 1m	145500009	*
KOREA • lux 0033+H03VV-F 0.75/3C+0011 1m	145500008	*
AUSTRALIA, NEW ZEALAND, NEW_ZEALAND • lux 0038+H03VV-F 0.75/3C+0011 1m	145500006	*
TAIWAN • lux 0019+VCTF 0.75/3C+0021 1m	145500007	*
JAPAN • lux 0018(E)+VCTF 0.75/3C+0021 1m	145500005	*
NEPAL, PAKISTAN, SOUTH AFRICA, SOUTH_AFRICA • lux 0044+H03VV-F 0.75/3C+0011 1m	145500010	*
AUSTRIA, AZERBAIJAN, BALTIC, BELARUS, BELGIUM, BULGARIA, CROATIA_SLOVENIA, CROATIA-SLOVENIA, CZECH_SLOVAKIA, CZECH-SLOVAKIA, EGYPT, EMAT_FR, EMAT_PO, EMAT-FR, EMAT-PO, FRANCE, GEORGIA, GERMANY, GREECE, HUNGARY, ICELAND, INDONESIA, KAZAKHSTAN, KAZAKSTAN, LUXEMBOURG, MOLDOVA, NETHERLANDS, NORDICS, POLAND, PORTUGAL, ROMANIA, RUSSIA, SERBIA, SPAIN, TURKEY, TURKMENISTAN, UKRAINE, UNITED ARAB EMIRATES, UNITED_ARAB_EMIRATES, VIETNAM • lux 0033+H03VV-F 0.75/3C+0011 1m	145500001	*

Notices

Lenovo may not offer the products, services, or features discussed in this document in all countries. Consult your local Lenovo representative for information on the products and services currently available in your area. Any reference to a Lenovo product, program, or service is not intended to state or imply that only that Lenovo product, program, or service may be used. Any functionally equivalent product, program, or service that does not infringe any Lenovo intellectual property right may be used instead. However, it is the user's responsibility to evaluate and verify the operation of any other product, program, or service.

Lenovo may have patents or pending patent applications covering subject matter described in this document. The furnishing of this document does not give you any license to these patents.

LENOVO GROUP LTD. PROVIDES THIS PUBLICATION "AS IS" WITHOUT WARRANTY OF ANY KIND, EITHER EXPRESS OR IMPLIED, INCLUDING, BUT NOT LIMITED TO, THE IMPLIED WARRANTIES OF NON-INFRINGEMENT, MERCHANTABILITY OR FITNESS FOR A PARTICULAR PURPOSE. Some jurisdictions do not allow disclaimer of express or implied warranties in certain transactions, therefore, this statement may not apply to you.

This information could include technical inaccuracies or typographical errors. Changes are periodically made to the information herein; these changes will be incorporated in new editions of the publication. Lenovo may make improvements and/or changes in the product(s) and/or the program(s) described in this publication at any time without notice.

The products described in this document are not intended for use in implantation or other life support applications where malfunction may result in injury or death to persons. The information contained in this document does not affect or change Lenovo product specifications or warranties. Nothing in this document shall operate as an express or implied license or indemnity under the intellectual property rights of Lenovo or third parties. All information contained in this document was obtained in specific environments and is presented as an illustration. The result obtained in other operating environments may vary.

Lenovo may use or distribute any of the information you supply in any way it believes appropriate without incurring any obligation to you.

Any references in this publication to non-Lenovo Web sites are provided for convenience only and do not in any manner serve as an endorsement of those Web sites. The materials at those Web sites are not part of the materials for this Lenovo product, and use of those Web sites is at your own risk.

Any performance data contained herein was determined in a controlled environment. Therefore, the result obtained in other operating environments may vary significantly. Some measurements may have been made on development-level systems and there is no guarantee that these measurements will be the same on generally available systems. Furthermore, some measurements may have been estimated through extrapolation. Actual results may vary. Users of this document should verify the applicable data for their specific environment.

Trademarks

The following terms are either registered trademarks or trademarks of Lenovo in the United States and/or other countries:

Lenovo®

Lenovo logo®

The following term is trademark of Microsoft Corporation in the United States, other countries, or both:

Windows®

The following term is trademark of Intel Corporation or its subsidiaries in the United States, other countries, or both:

Intel®

Other company, product, or service names may be the trademarks or service marks of others.