



ideacentre All-In-One 730S Computer Hardware Maintenance Manual

Machine Types: F0DX, F0DY



ideacentre All-In-One 730S Computer Hardware Maintenance Manual

Machine Types: F0DX, F0DY

First Edition (January 2018)

© Copyright Lenovo 2018.

LIMITED AND RESTRICTED RIGHTS NOTICE: If data or software are delivered pursuant a General Services Administration "GSA" contract, use, reproduction, or disclosure is subject to restrictions set forth in Contract No. GS-35F-05925

Contents

Chapter 1. About this manual	1
Important Safety Information.	1

Chapter 2. Safety information.	3
General safety	3
Electrical safety	3
Safety inspection guide.	5
Handling electrostatic discharge-sensitive devices	5
Grounding requirements	6
Safety notices	6

Chapter 3. General information	9
Specifications	9

Chapter 4. General Checkout	11
--	-----------

Chapter 5. Using the Setup Utility.	13
Starting the Lenovo BIOS Setup Utility program	13
Viewing and changing settings	13
Using passwords	13
Enabling or disabling a device	15
Selecting a startup device.	16
Exiting the Lenovo BIOS Setup Utility program.	17

Chapter 6. Symptom-to-FRU Index	19
Hard disk drive boot error	19
Power Supply Problems	19
POST error codes	20
Undetermined problems	20

Chapter 7. Locating connectors, controls and components	21
--	-----------

Chapter 8. Replacing hardware	27
General information	27
Replacing the keyboard and mouse	28
Replacing the adapter	28
Removing the stand base	29
Removing the rear cover	29
Removing the stand holder	31
Replacing the hard disk drive	32
Replacing the HDMI switch board.	33
Removing the motherboard frame.	34
Replacing the speaker system	35
Replacing the power button board	36
Replacing the system fan	37
Replacing the heat-sink.	38
Replacing the memory module	39
Replacing the solid state drive	40
Replacing the Wi-Fi card	41
Replacing the motherboard	42
Replacing the camera module	44
Replacing the microphone module	45
Replacing the front decorative cover.	46
Replacing the LCD panel module	48

Chapter 9. FRU lists	53
---------------------------------------	-----------

Chapter 10. General information	59
Additional Service Information	59

Chapter 1. About this manual

This manual contains service and reference information for Lenovo All-In-One 520 series computers listed on the cover. It is intended only for trained servicers who are familiar with Lenovo computer products.

Before servicing a Lenovo product, be sure to read the Safety Information.

The description of the TV-tuner card in this manual applies only to computers with a TV-tuner card installed. It does not apply to computers without a TV-tuner card.

Important Safety Information

Be sure to read all CAUTION and DANGER sections in this manual before following any of the instructions.

Veillez lire toutes les consignes de type DANGER et ATTENTION du présent document avant d'exécuter les instructions.

Lesen Sie unbedingt alle Hinweise vom Typ "ACHTUNG" oder "VORSICHT" in dieser Dokumentation, bevor Sie irgendwelche Vorgänge durchführen

Leggere le istruzioni introdotte da ATTENZIONE e PERICOLO presenti nel manuale prima di eseguire una qualsiasi delle istruzioni

Certifique-se de ler todas as instruções de cuidado e perigo neste manual antes de executar qualquer uma das instruções

Es importante que lea todas las declaraciones de precaución y de peligro de este manual antes de seguir las instrucciones.

执行任何说明之前，请确保已阅读本书中的所有警告和危险声明。

執行任何指示前，請確實閱讀本書中的所有警告及危險聲明。

Chapter 2. Safety information

This chapter contains the safety information that you need to be familiar with before servicing a computer.

General safety

Follow these rules to ensure general safety:

- Keep the areas around the computer clear and clean during and after maintenance.
- When lifting any heavy object:
 1. Ensure you can stand safely without slipping.
 2. Distribute the weight of the object equally across both feet.
 3. Lift slowly. Never move suddenly or twist when you attempt to lift.
 4. Lift by standing or by pushing up with your leg muscles; this action removes the strain from the muscles in your back.
Do not attempt to lift any objects that weigh more than 16 kg (35 lb) or objects that you think are too heavy for you.
- Do not perform any action that would create a hazard for the customer, or would make the computer unsafe.
- Before you start the computer, ensure that other service representatives and customer personnel are not in a position that would create a hazard for them.
- Place removed covers and other parts in a safe place, away from all personnel, while you are servicing the computer.
- Keep your tool case away from areas that people may walk through to ensure no-one trips over it.
- Do not wear loose clothing that can be trapped in the moving parts of a machine. Ensure that your sleeves are fastened or rolled up above your elbows. If your hair is long, tie or fasten it back.
- Insert the ends of your necktie or scarf inside clothing or fasten it with a non-conductive clip, approximately 8 centimeters (3 inches) from the end.
- Do not wear jewelry, chains, metal-frame eyeglasses, or metal fasteners for your clothing.
Remember: Metal objects are good electrical conductors.
- Wear safety glasses when you are: hammering, drilling soldering, cutting wire, attaching springs, using solvents, or working in any other conditions that might be hazardous to your eyes.
- After service, reinstall all safety shields, guards, labels, and ground wires. Replace any safety device that is worn or defective.
- Reattach all covers correctly before returning the computer to the customer.

Electrical safety



CAUTION:

Electrical current from power, telephone, and communication cables can be hazardous. To avoid personal injury or equipment damage, disconnect any attached power cords, telecommunication

cables, network cables, and modem cables before you open the computer covers, unless instructed otherwise in the installation and configuration procedures.

Observe the following rules when working on electrical equipment.

Important: Use only approved tools and test equipment. Some hand tools have handles covered with a soft material that does not insulate you when working with live electrical currents. Many customers have rubber floor mats near their equipment that contain small conductive fibers to decrease electrostatic discharge.

- Find the room emergency power-off (EPO) switch, disconnecting switch, or electrical outlet. If an electrical accident occurs, you can then operate the switch or unplug the power cord quickly.
- Do not work alone under hazardous conditions or near equipment that has hazardous voltages.
- Disconnect all power before:
 - Performing a mechanical inspection
 - Working near power supplies
 - Removing or installing Field Replaceable Units (FRUs)
- Before you start to work on the computer, unplug the power cord. If you cannot unplug it, ask the customer to power-off the electrical outlet that supplies power to the machine and to lock the electrical outlet in the off position.
- If you need to work on a computer that has exposed electrical circuits, observe the following precautions:
 - Ensure that another person, familiar with the power-off controls, is near you.
Remember: Another person must be there to switch off the power, if necessary.
 - Use only one hand when working with powered-on electrical equipment; keep the other hand in your pocket or behind your back.
Remember: There must be a complete circuit to cause electrical shock. By observing the above rule, you may prevent a current from passing through your body.
 - When using a tester, set the controls correctly and use the approved probe leads and accessories for that tester.
 - Stand on suitable rubber mats (obtained locally, if necessary) to insulate you from grounds such as metal floor strips and machine frames.

Observe the special safety precautions when you work with very high voltages; these instructions are in the safety sections of the maintenance information. Use extreme care when measuring high voltages.

- Regularly inspect and maintain your electrical hand tools to ensure they are safe to use.
- Do not use worn or broken tools and testers.
- *Never assume* that power has been disconnected from a circuit. First, *check* that it has been powered off.
- Always look carefully for possible hazards in your work area. Examples of these hazards are wet floors, non-grounded power extension cables, conditions that may cause or allow power surges, and missing safety grounds.
- Do not touch live electrical circuits with the reflective surface of a plastic dental mirror. This surface is conductive, and touching a live circuit can cause personal injury and damage to the computer.
- Do not service the following parts with the power on when they are removed from their normal operating positions in a computer:
 - Power supply units
 - Pumps
 - Blowers and fans
 - Motor generatorsand similar units. (This practice ensures correct grounding of the units.)

- If an electrical accident occurs:
 - Use caution; do not become a victim yourself.
 - Switch off power.
 - Send another person to get medical aid.

Safety inspection guide

The intent of this inspection guide is to assist you in identifying potential hazards posed by these products. Each computer, as it was designed and built, had required safety items installed to protect users and service personnel from injury. This guide addresses only those items. However, good judgment should be used to identify potential safety hazards due to attachment of features or options not covered by this inspection guide.

If any hazards are present, you must determine how serious the apparent hazard could be and whether you can continue without first resolving the problem.

Consider the following items and the safety hazards they present:

- Electrical hazards, especially primary power (primary voltage on the frame can cause serious or fatal electrical shock).
- Explosive hazards, such as a damaged CRT face or bulging capacitor
- Mechanical hazards, such as loose or missing hardware

The guide consists of a series of steps presented as a checklist. Begin the checks with the power off, and the power cord disconnected.

Checklist:

1. Check exterior covers for damage (loose, broken, or sharp edges).
2. Power-off the computer. Disconnect the power cord.
3. Check the power cord for:
 - a. A third-wire ground connector in good condition. Use a meter to measure third-wire ground continuity for 0.1 ohm or less between the external ground pin and frame ground.
 - b. The power cord should be the appropriate type as specified in the parts listings.
 - c. Insulation must not be frayed or worn.
4. Remove the cover.
5. Check for any obvious alterations. Use good judgment as to the safety of any alterations.
6. Check inside the unit for any obvious hazards, such as metal filings, contamination, water or other liquids, or signs of fire or smoke damage.
7. Check for worn, frayed, or pinched cables.
8. Check that the power-supply cover fasteners (screws or rivets) have not been removed or tampered with.

Handling electrostatic discharge-sensitive devices

Any computer part containing transistors or integrated circuits (ICs) should be considered sensitive to electrostatic discharge (ESD). ESD damage can occur when there is a difference in charge between objects. Protect against ESD damage by equalizing the charge so that the computer, the part, the work mat, and the person handling the part are all at the same charge.

Notes:

1. Use product-specific ESD procedures when they exceed the requirements noted here.
2. Make sure that the ESD protective devices you use have been certified (ISO 9000) as fully effective.

When handling ESD-sensitive parts:

- Keep the parts in protective packages until they are inserted into the product.
- Avoid contact with other people while handling the part.
- Wear a grounded wrist strap against your skin to eliminate static on your body.
- Prevent the part from touching your clothing. Most clothing is insulative and retains a charge even when you are wearing a wrist strap.
- Use the black side of a grounded work mat to provide a static-free work surface. The mat is especially useful when handling ESD-sensitive devices.
- Select a grounding system, such as those listed below, to provide protection that meets the specific service requirement.

Note: The use of a grounding system is desirable but not required to protect against ESD damage.

- Attach the ESD ground clip to any frame ground, ground braid, or green-wire ground.
- Use an ESD common ground or reference point when working on a double-insulated or battery-operated system. You can use coax or connector-outside shells on these systems.
- Use the round ground-prong of the AC plug on AC-operated computers.

Grounding requirements

Electrical grounding of the computer is required for operator safety and correct system function. Proper grounding of the electrical outlet can be verified by a certified electrician.

Safety notices

The CAUTION and DANGER safety notices in this section are provided in the language of English.



DANGER

Electrical current from power, telephone and communication cables is hazardous.

To avoid a shock hazard:

- **Do not connect or disconnect any cables or perform installation, maintenance, or reconfiguration of this product during an electrical storm.**
- **Connect all power cords to a properly wired and grounded electrical outlet.**
- **Connect any equipment that will be attached to this product to a properly wired outlet.**
- **When possible, use one hand only to connect or disconnect signal cables.**
- **Never turn on any equipment when there is evidence of fire, water, or structural damage.**
- **Disconnect the attached power cords, telecommunications cables, network cables, and modem cables before you open the device covers, unless instructed otherwise in the installation and configuration procedures.**

- **Connect and disconnect cables as described in the following table when installing, moving, or opening covers on this product or attached devices.**

To Connect	To Disconnect
<ol style="list-style-type: none"> 1. Turn everything OFF. 2. First, attach all cables to devices. 3. Attach signal cables to connectors. 4. Attach power cords to outlet. 5. Turn device ON. 	<ol style="list-style-type: none"> 1. Turn everything OFF. 2. First, remove power cords from outlets. 3. Remove signal cables from connectors. 4. Remove all cables from devices.



CAUTION:

When replacing the lithium battery, use only Part Number 45C1566 or an equivalent type battery recommended by the manufacturer. If your system has a module containing a lithium battery, replace it only with the same module type made by the same manufacturer. The battery contains lithium and can explode if not properly used, handled, or disposed of.

Do not:

- Throw into or immerse in water
- Heat to more than 100°C (212°F)
- Repair or disassemble

Dispose of the battery as required by local ordinances or regulations.



CAUTION:

When laser products (such as CD-ROMs, DVD-ROM drives, fiber optic devices, or transmitters) are installed, note the following:




- Do not remove the covers. Removing the covers of the laser product could result in exposure to hazardous laser radiation. There are no serviceable parts inside the device.
- Use of controls or adjustments or performance of procedures other than those specified herein might result in hazardous radiation exposure.



 **DANGER**

Some laser products contain an embedded Class 3A or Class 3B laser diode. Note the following: These diodes emit radiation when open. Do not stare into the beam, do not view directly with optical instruments, and avoid direct exposure to the beam.

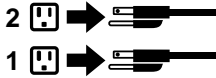


		
≥18 kg (37 lbs)	≥32 kg (70.5 lbs)	≥55 kg (121.2 lbs)

CAUTION:
Use safe practices when lifting.



CAUTION:
The power control button on the device and the power switch on the power supply do not turn off the electrical current supplied to the device. The device also might have more than one power cord. To remove all electrical current from the device, ensure that all power cords are disconnected from the power source.



CAUTION:
Do not place any object weighing more than 82 kg (180 lbs.) on top of rack-mounted devices.



Chapter 3. General information

This chapter provides general information that applies to all computer models covered by this manual.

Specifications

This section lists the physical specifications for your computer.

This section lists the physical specifications for your computer.

Type Lenovo All-In-One 730S

This section lists the physical specifications.

Environment

Air temperature:

Operating: 10° to 35°C

Transit: -20° to 55°C

Humidity:

Operating: 35% to 80%

Transit: 20% to 90% (40°C)

Altitude: 86KPa to 106KPa

Electrical input:

Input voltage: 90V-264V(AC)

Input frequency: 47Hz-63Hz

Chapter 4. General Checkout

Attention: The drives in the computer you are servicing might have been rearranged or the drive startup sequence may have been changed. Be extremely careful during write operations such as copying, saving, or formatting. Data or programs can be overwritten if you select an incorrect drive.

General error messages appear if a problem or conflict is found by an application, the operating system, or both. For an explanation of these messages, refer to the information supplied with that software package.

Use the following procedure to help determine the cause of the problem:

1. Power-off the computer and all external devices.
2. Check all cables and power cords.
3. Set all display controls to the middle position.
4. Power-on all external devices.
5. Power-on the computer.
 - Look for displayed error codes.
 - Look for readable instructions or a main menu on the display.
 - If you did not receive the correct response, proceed to step 6.
 - If you did receive the correct response, proceed to step 7.
6. If one of the following happens, follow the instruction given:
 - If the computer displays a POST error, go to “POST error codes”.
 - If the computer hangs and no error is displayed, continue at step 7.
7. If the test stops and you cannot continue, replace the last device tested.

Chapter 5. Using the Setup Utility

The Setup Utility program is used to view and change the configuration settings of your computer, regardless of which operating system you are using. However, the operating system settings might override any similar settings in the Setup Utility program.

Starting the Lenovo BIOS Setup Utility program

To start the Lenovo BIOS Setup Utility program, do the following:

1. If your computer is already on when you start this procedure, shut down the operating system and turn off the computer.
2. Press and hold the **F1** key then turn on the computer. When the Lenovo BIOS Setup Utility program is displayed, release the **F1** key.

Note: If a Power-On Password or an Administrator Password has been set, the Setup Utility program menu will not be displayed until you type your password. For more information, see “Using passwords.”

Viewing and changing settings

System configuration options are listed in the Lenovo BIOS Setup Utility program menu. To view or change settings, see “Starting the Setup Utility program.”

You must use the keyboard when using the Lenovo BIOS Setup Utility menu. The keys used to perform various tasks are displayed on the bottom of each screen.

Using passwords

You can use the Lenovo BIOS Setup Utility program to set passwords to prevent unauthorized persons from gaining access to your computer and data. See “Starting the Setup Utility program.” The following types of passwords are available:

- Administrator Password
- Power-On Password

You do not have to set any passwords to use your computer. However, if you decide to set passwords, read the following sections.

Password considerations

A password can be any combination of letters and numbers up to 16 characters (a-z and 0-9). For security reasons, it is a good idea to use a strong password that cannot be easily compromised. We suggest that passwords should follow these rules:

- For a strong password, use 7-16 characters and a mix of letters and numbers.
- Do not use your name or your user name.
- Do not use a common word or a common name.
- Use something significantly different from your previous password.

Attention: Administrator and Power-On passwords are not case sensitive.

Administrator Password

Setting an Administrator Password deters unauthorized persons from changing configuration settings. You might want to set an Administrator Password if you are responsible for maintaining the settings of several computers.

After you set an Administrator Password, a password prompt is displayed every time you access the Lenovo BIOS Setup Utility program.

If both the Administrator and Power-On Password are set, you can type either password. However, you must use your Administrator Password to change any configuration settings.

Setting, changing, or deleting an Administrator password

To set an Administrator Password, do the following:

Note: A password can be any combination of letters and numbers up to 16 characters (a-z and 0-9). For more information, see “Password considerations” on page 13.

1. Start the Lenovo BIOS Setup Utility program (see “Starting the Lenovo BIOS Setup Utility program” on page 13).
2. From the **Security** menu, select **Set Administrator Password** and press the **Enter** key.
3. The password dialog box will be displayed. Type the password then press the **Enter** key.
4. Re-type the password to confirm, then press the **Enter** key. If you typed the password correctly, the password will be installed.

To change an Administrator Password, do the following:

1. Start the Lenovo BIOS Setup Utility program (see “Starting the Lenovo BIOS Setup Utility program” on page 13).
2. From the **Security** menu, select **Set Administrator Password** and press the **Enter** key.
3. The password dialog box will be displayed. Type the current password then press the **Enter** key.
4. Type the new password, then press the **Enter** key. Re-type the password to confirm the new password. If you typed the new password correctly, the new password will be installed. A Setup Noticed confirming that changes have been saved will be displayed.

To delete a previously set Administrator Password, do the following :

1. From the **Security** menu, select **Set Administrator Password** and press the **Enter** key.
2. The password dialog box will be displayed. Type the current password and press the **Enter** key.
3. To delete an **Administrator Password**, leave each new password line item blank, then press the **Enter** key. A Setup Notice confirming that changes have been saved will be displayed.
4. Return to the Lenovo BIOS Setup Utility program menu and select the **Exit** option.
5. Select **Save changes and Exit** from the menu.

Power-On Password

When a Power-On Password is set, you cannot start the Lenovo BIOS Setup Utility program until a valid password is typed from the keyboard.

Setting, changing, or deleting a Power-On Password

Note: A password can be any combination of letters and numbers up to 16 characters (a-z and 0-9).

To set a Power-On Password, do the following:

1. Start the Lenovo BIOS Setup Utility program (See "Starting the Lenovo BIOS Setup Utility program" on page 13.)
2. From the **Security** menu, select **Set Power-On Password** and press the **Enter** key.
3. The password dialog box will be displayed. Type the password, then press the **Enter** key.
4. Re-type the password to confirm. If you typed the password correctly, the password will be installed.

To change a Power-On Password, do the following:

1. Start the Lenovo BIOS Setup Utility program (See "Starting the Lenovo BIOS Setup Utility program" on page 13.)
2. From the **Security** menu, select **Set Power-On Password** and press the **Enter** key.
3. The password dialog box will be displayed. Type the current password then press the **Enter** key.
4. Type the new password, then press the **Enter** key. Re-type the password to confirm the new password. If you typed the new password correctly, the new password will be installed. A Setup Noticed confirming that changes have been saved will be displayed.

To delete a previously set Power-On Password, do the following :

1. From the **Security** menu, select **Set Power-On Password** and press the **Enter** key.
2. The password dialog box will be displayed. Type the current password and press the **Enter** key.
3. To delete the **Power-On Password**, leave each new password line item blank, then press Enter. A Setup Notice confirming that changes have been saved will be displayed.
4. Return to the Lenovo BIOS Setup Utility program menu and select the **Exit** option.
5. Select **Save changes and Exit** from the menu.

Enabling or disabling a device

The Devices options is used to enable or disable user access to the following devices:	
USB Functions	Select whether to enable or disable USB (Universal Serial Bus) functions. If the functions are disabled, no USB devices can be used.
SATA Mode	When this feature is set to Disabled , all devices connected to the SATA connectors (e.g. hard disk drives or the optical disk drive) are disabled and cannot be accessed.
Onboard Audio Controller	Select whether to enable or disable the Onboard Audio Controller . When this feature is set to Disabled all devices connected to the audio connectors (e.g. headphones or a microphone) are disabled and cannot be used.
Onboard Ethernet Controller or LAN Boot Agent	Select whether to enable or disable the Onboard Ethernet Controller , or select whether to enable or disable load onboard PXE (Preboot Execution Environment) .

To enable or disable a device, do the following:

1. Start the Setup Utility program (see “Starting the Setup Utility program” on page 13).
2. From the Setup Utility program menu, select **Devices**.
3. Select an option as follows:
 - Select **USB Setup**, press the **Enter** key, then select **USB Functions**.
 - Select **ATA Device Setup**, press the **Enter** key, then select **SATA Mode**.
 - Select **Audio Setup**, press the **Enter** key, then select **Onboard Audio Controller**.
 - Select **Network Setup**, press the **Enter** key, then select **Onboard Ethernet Support** or **LAN Boot Agent**.
4. Select **Disabled** or **Enabled** and press the **Enter** key.
5. Return to the Lenovo BIOS Setup Utility program menu and select the **Exit** option.
6. Select **Save changes and Exit** from the menu.

Notes:

- a. If you do not want to save the settings, select **Discard changes and Exit** from the menu.
- b. Select IDE/AHCI Mode: Device driver support is required for AHCI. Depending on how the hard disk image was installed, changing this setting may prevent the system from booting.

Selecting a startup device

If your computer does not boot from a device such as the CD/DVD-ROM drive disk or hard disk as expected, follow one of the procedures below.

Selecting a temporary startup device

Use this procedure to start up from any boot device.

Note: Not all CDs, DVDs or hard disk drives are bootable.

1. Turn off your computer.
2. Press and hold the **F12** key then turn on the computer. When the **Startup Device Menu** appears, release the **F12** key.

Note: If the **Startup Device Menu** does not display using these steps, repeatedly press and release the **F12** key rather than keeping it pressed when turning on the computer.

3. Use **↑** and **↓** arrows to select the desired startup device from the **Startup Device Menu** and press the **Enter** key to begin.

Note: Selecting a startup device from the **Startup Device Menu** does not permanently change the startup sequence.

Selecting or changing the startup device sequence

To view or permanently change the configured startup device sequence, do the following:

1. Start the Lenovo BIOS Setup Utility program (see “Starting the Lenovo BIOS Setup Utility program” on page 13).
2. From the Lenovo BIOS Setup Utility program main menu, select the **Startup** option.
3. Press the **Enter** key, and select the devices for the **Primary Boot Sequence**. Read the information displayed on the right side of the screen.
4. Use **↑** and **↓** arrows to select a device. Use the **<+>** or **<->** keys to move a device up or down. Use the **<x>** key to exclude the device from or include the device in the boot sequence.

5. Return to the Lenovo BIOS Setup Utility program menu and select the **Exit** option.
6. Select **Save changes and Exit** from the menu.

Notes:

- a. If you do not want to save the settings, select **Discard changes and Exit** from the menu.
- b. If you have changed these settings and want to return to the default settings, select **Load Optimal Defaults** from the menu.

Exiting the Lenovo BIOS Setup Utility program

After you finish viewing or changing settings, press the **Esc** key to return to the Lenovo BIOS Setup Utility program main menu. You might have to press the **Esc** key several times. Do one of the following:

- If you want to save the new settings, select **Save changes and Exit** from the menu. When the **Save & reset** window shows, select the **Yes** button, and then press the **Enter** key to exit the Lenovo BIOS Setup Utility program.
- If you do not want to save the settings, select **Discard changes and Exit** from the menu. When the **Reset Without Saving** window shows, select the **Yes** button, and then press the **Enter** key to exit the Lenovo BIOS Setup Utility program.

Chapter 6. Symptom-to-FRU Index

The Symptom-to-FRU index lists error symptoms and possible causes. The most likely cause is listed first. Always begin with Chapter 4, “General Checkout,” on page 11. This index can also be used to help you decide which FRUs to have available when servicing a computer. If you are unable to correct the problem using this index, go to “Undetermined problems” on page 20.

Notes:

- If you have both an error message and an incorrect audio response, diagnose the error message first.
- If you cannot run the diagnostic tests or you get a diagnostic error code when running a test but did receive a POST error message, diagnose the POST error message first.
- If you did not receive any error message look for a description of your error symptoms in the first part of this index.

Hard disk drive boot error

A hard disk drive boot error can be caused by the following.

Error	FRU/Action
The startup drive is not included in the boot sequence configuration.	Check the configuration and ensure the startup drive is in the boot sequence.
No operating system is installed on the boot drive.	Install an operating system on the boot drive.
The boot sector on the startup drive is corrupted.	The drive must be formatted. Do the following: <ol style="list-style-type: none">1. Attempt to back up the data on the failing hard disk drive.2. Use the operating system to format the hard disk drive.
The drive is defective.	Replace the hard disk drive.

Power Supply Problems

Follow these procedures if you suspect there is a power supply problem.

Check/Verify	FRU/Action
Check that the following are properly installed: <ul style="list-style-type: none">• Power Cord• On/Off Switch connector• System Board Power Supply connectors• Microprocessor connections	Reseat connectors
Check the power cord.	Power Cord
Check the power-on switch.	Power-on Switch

POST error codes

Each time you turn the computer on, it performs a series of tests to check that the system is operating correctly and that certain options are set. This series of tests is called the *Power-On Self-Test*, or *POST*. POST does the following:

- Checks some basic motherboard operations
- Checks that the memory is working correctly
- Starts video operations
- Verifies that the boot drive is working

POST Error Message	Description/Action
Keyboard error	Cannot initialize the keyboard. Make sure the keyboard is properly connected to the computer and that no keys are held pressed during POST. To purposely configure the computer without a keyboard, select Keyboardless operation in Startup and set the option to Enabled . The BIOS then ignores the missing keyboard during POST.
Reboot and Select proper Boot device or Insert Boot Media in selected Boot device	The BIOS was unable to find a suitable boot device. Make sure the boot drive is properly connected to the computer. Make sure you have bootable media in the boot device.

Undetermined problems

1. Power-off the computer.
2. Remove or disconnect the following components (if connected or installed) one at a time.
 - a. External devices (modem, printer, or mouse)
 - b. Extended video memory
 - c. External Cache
 - d. External Cache RAM
 - e. Hard disk drive
 - f. Disk drive
3. Power-on the computer to re-test the system.
4. Repeat steps 1 through 3 until you find the failing device or component.

If all devices and components have been removed and the problem continues, replace the system board.

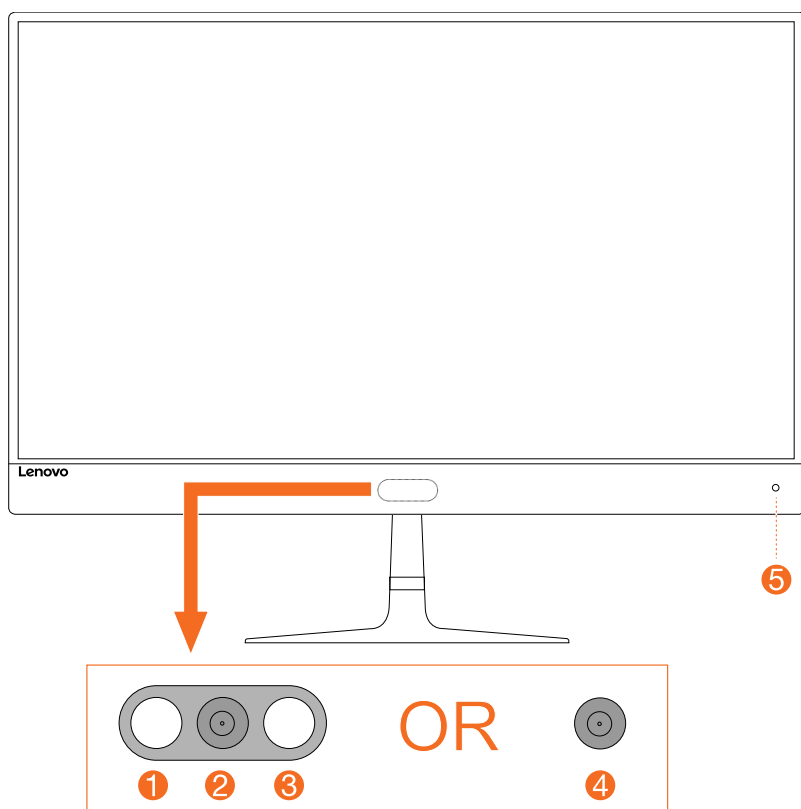
Chapter 7. Locating connectors, controls and components

This section provides illustrations to help locate the various connectors, controls and components of the computer.

Front view

The following illustration shows the location of controls and components on the front of the computer.

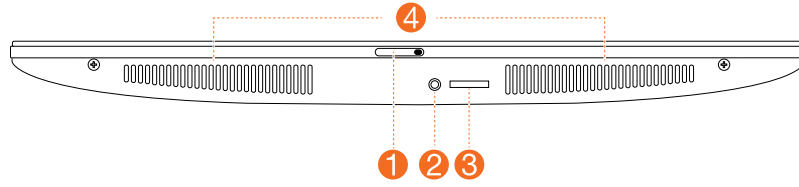
Attention: Be careful not to block any air vents on the computer. Blocked air vents can cause overheating.



1. Infrared LEDs	4. Built-in camera
2. Built-in camera	5. Power indicator
3. Infrared LEDs	

Bottom view of the computer

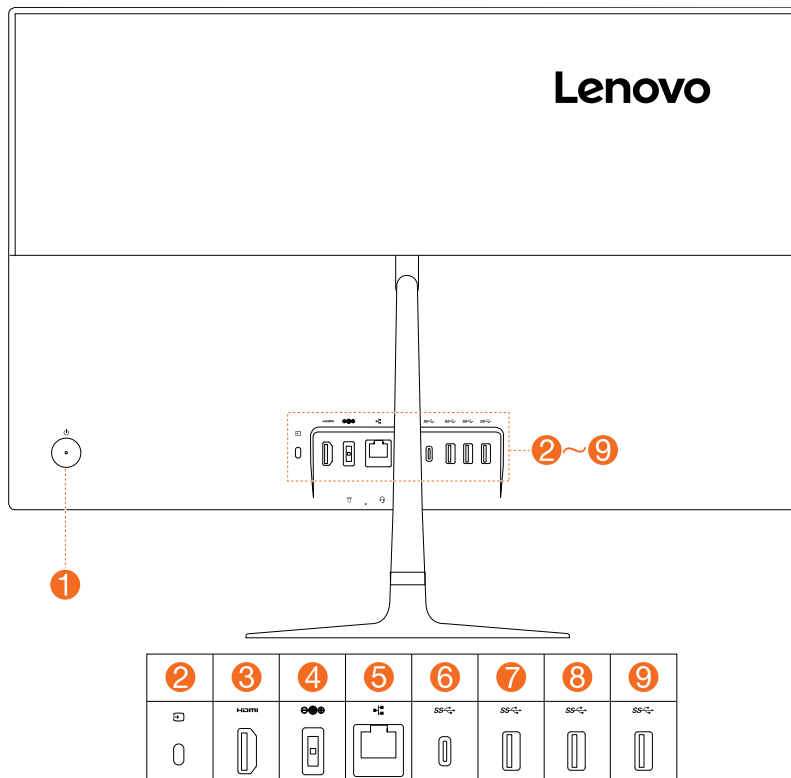
The following illustration shows the location of connectors, controls and components on the bottom of the computer.



1. Camera sliding cover	3. Memory card reader
2. Combo audio jack	4. Air vents

Rear view

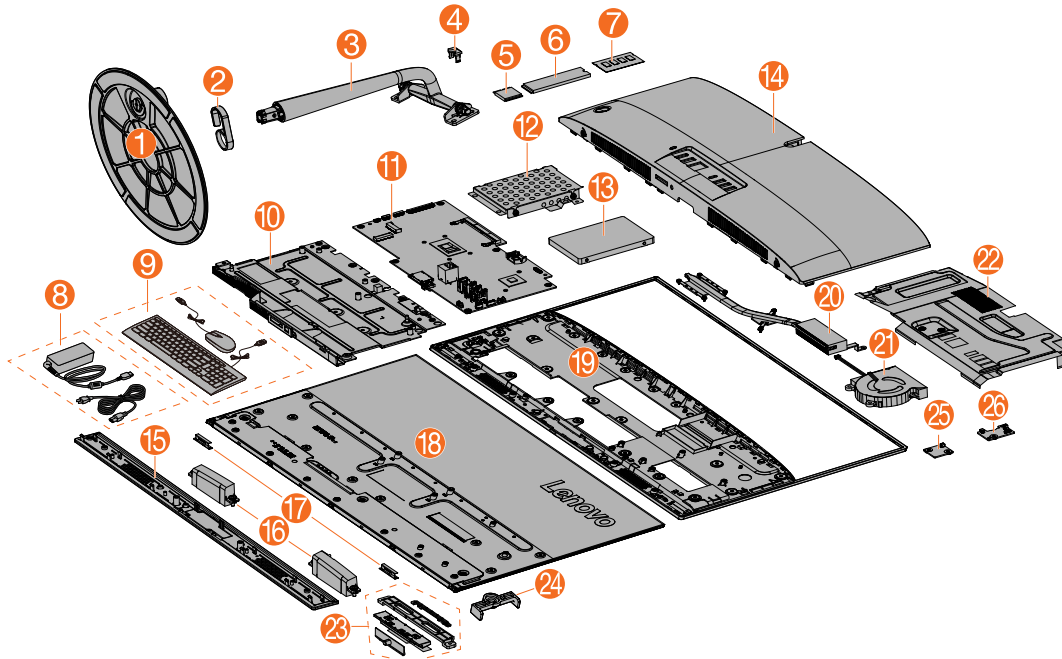
The following illustration shows the location of connectors and components on the rear of the computer.



1. Power button	6. USB 3.1 Gen 1 (5Gbps) Type-C connector (only supports USB data transmission)
2. HDMI™ in/out switch	7. USB 3.0 connector
3. HDMI™ 1.4 in/out connector	8. USB 3.0 connector
4. Power connector	9. USB 3.0 connector
5. Ethernet connector	

Hardware components

The following illustration shows the components that make up your computer.

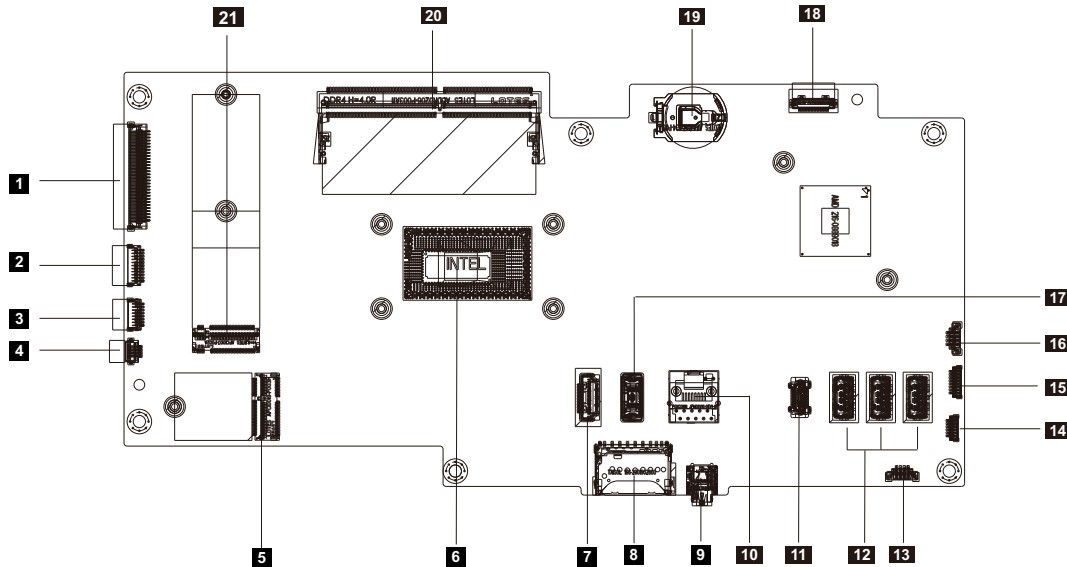


1. Stand base	14. Rear cover
2. Cable clip	15. Front decorative cover
3. Stand holder	16. Speakers module
4. Hinge cover	17. Wi-Fi antennas
5. Wi-Fi card	18. LED panel
6. Solid state drive	19. LED frame
7. Memory card	20. Heatsink
8. Power cord and adapter	21. System fan
9. Keyboard and mouse	22. Motherboard top frame
10. Motherboard base frame	23. Camera module
11. Motherboard	24. Wi-Fi cover
12. HDD bracket	25. HDMI switch board
13. Hard disk drive	26. Power button board

Identifying parts on the motherboard

The motherboard (sometimes called the planar or system board) is the main circuit board in your computer. It provides basic computing functions and supports a variety of devices that are factory-installed or that you can install later. The following illustration shows the location of connectors and components on the front of the motherboard.

AIO 730S-24IKB



1. LVDS connector	12. USB 3.0 connectors(3)
2. Backlight connector	13. Speaker connector
3. Touch panel connector	14. DMIC connector
4. Power switch board connector	15. IR Web camera connector
5. Wifi connector	16. System fan connector
6. CPU	17. DC-IN connector
7. HDMI in/out connector	18. SATA connector
8. Card reader	19. Battery
9. Audio Combo Jack	20. RAM connector
10. Ethernet connector	21. SSD connector
11. USB 3.1 Gen 1 Type-C connector	

Chapter 8. Replacing hardware

Attention: Do not remove the computer cover or attempt any repair before reading the “Important safety information” in the Safety and Warranty Guide that was included with your computer. To obtain copies of the Safety and Warranty Guide, go to the Support Web site at: <http://consumersupport.lenovo.com>.

Note: Use only parts provided by Lenovo.

General information

Pre-disassembly instructions

Before starting the disassembly procedure, make sure that you do the following:

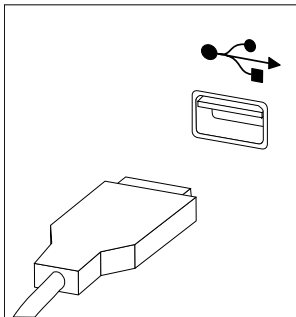
1. Turn off the power to the system and all peripherals.
2. Unplug all power and signal cables from the computer.
3. Place the system on a flat, stable surface.

Replacing the keyboard and mouse

Note: Your keyboard will be connected to a USB connector at either side or at the rear of the computer.

To replace the keyboard and mouse:

- Step 1. Remove any media from the drives, shut down the computer, and turn off all attached devices.
- Step 2. Unplug all power cords from electrical outlets.
- Step 3. Disconnect all cables attached to the computer. This includes power cords, input/output (I/O) cables, and any other cables that are connected to the computer. .
- Step 4. Locate the connector for the keyboard. Refer to Locating connectors, controls and components to locate the various connectors.
- Step 5. Disconnect the defective keyboard cable from the computer and connect the new keyboard cable to the same connector.

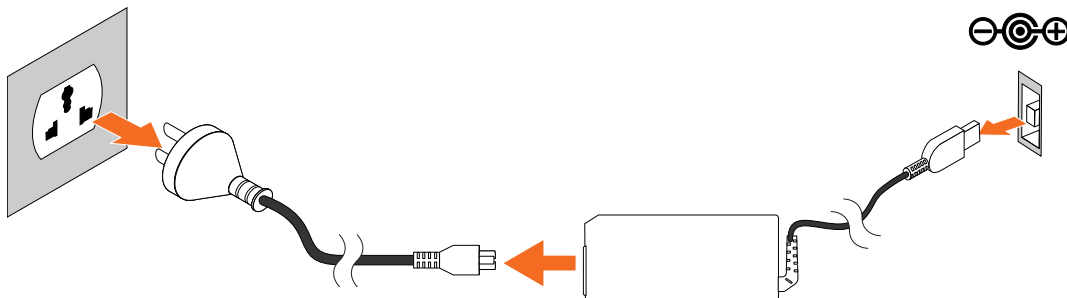


- Step 6. The mouse can be replaced using the same method.

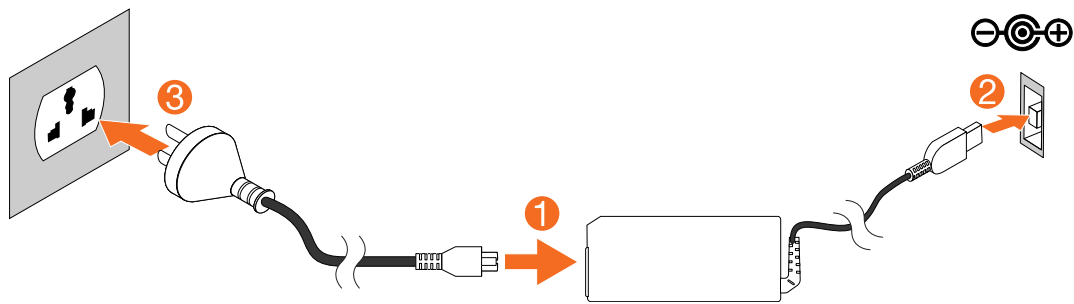
Replacing the adapter

Attention: Turn off the computer and wait 3 to 5 minutes to let it cool down before removing the cover.

- Step 1. Remove any media from the drives, shut down the operating system, and turn off the computer and all attached devices.
- Step 2. Disconnect the adapter from the connector on the computer, then unplug the adapter from electrical outlet.



- Step 3. Connect the new adapter as shown.

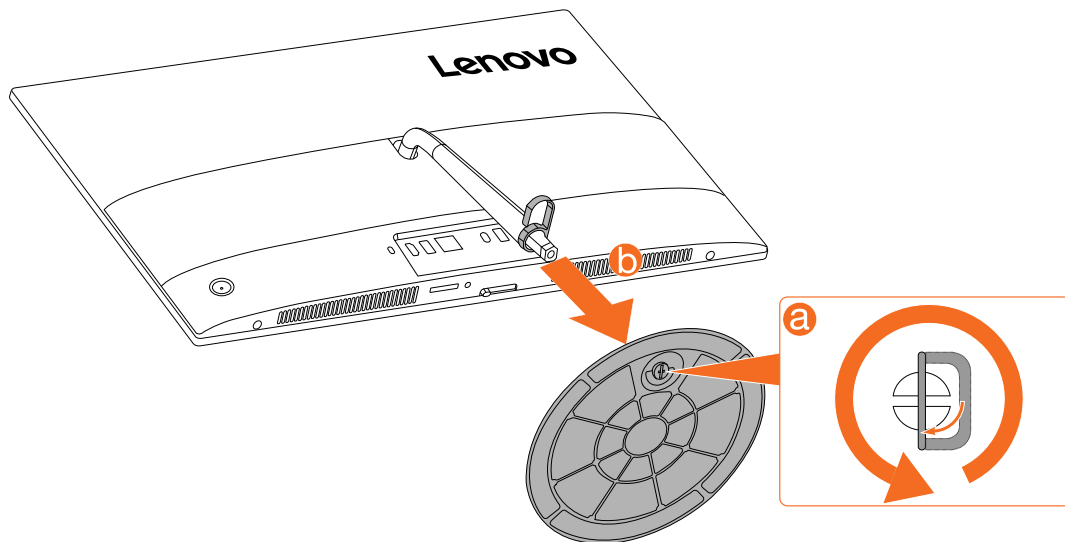


Removing the stand base

Attention: Turn off the computer and wait 3 to 5 minutes to let it cool down before removing the cover.

Note: It may be helpful to place the computer face-down on a soft flat surface for this procedure. Lenovo recommends that you use a blanket, towel, or other soft cloth to protect the touch screen from scratches or other damage.

- Step 1. Remove any media from the drives, shut down the operating system, and turn off the computer and all attached devices.
- Step 2. Unplug all power cords from electrical outlets.
- Step 3. Disconnect all cables attached to the computer. This includes power cords, input/output (I/O) cables, and any other cables that are connected to the computer. Refer to Locating connectors, controls and components to locate the various connectors.
- Step 4. Twist the hand screw ring counter-clockwise until the stand base is loosened. **a**
- Step 5. Remove the stand base from the stand holder and put it aside. **b**

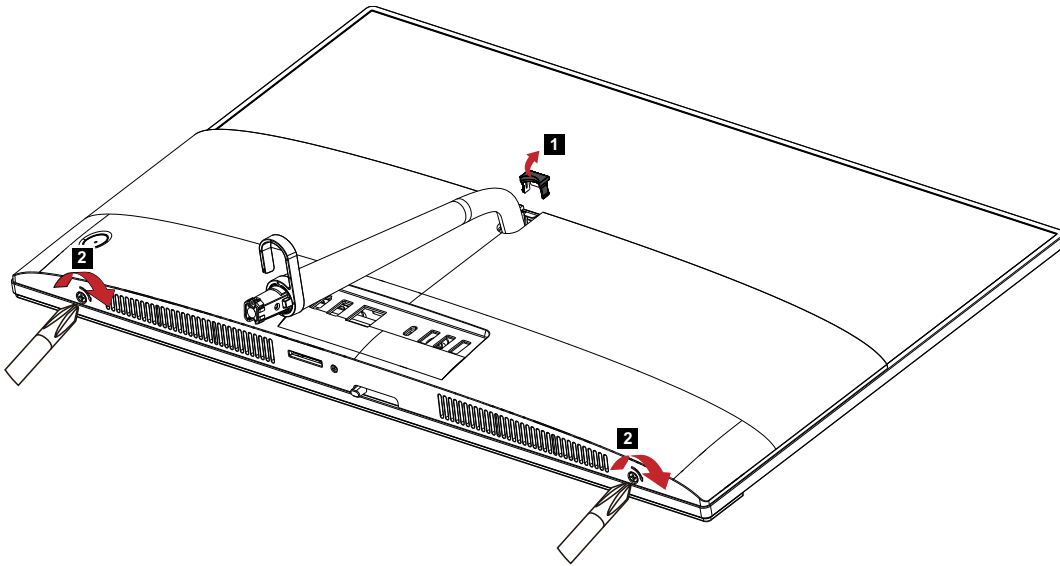


Removing the rear cover

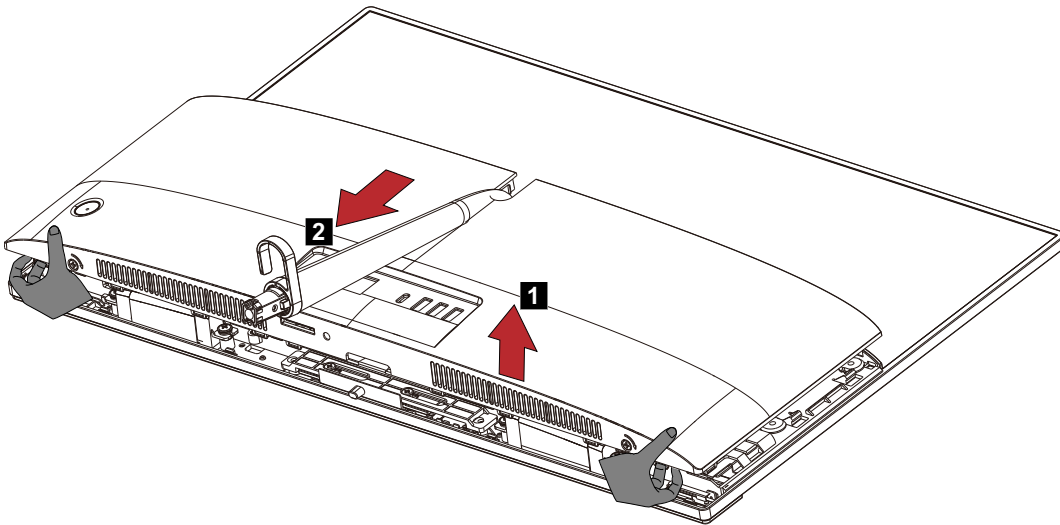
Attention: Turn off the computer and wait 3 to 5 minutes to let it cool down before removing the cover.

Note: It may be helpful to place the computer face-down on a soft flat surface for this procedure. Lenovo recommends that you use a blanket, towel, or other soft cloth to protect the touch screen from scratches or other damage.

- Step 1. Remove any media from the drives, shut down the operating system, and turn off the computer and all attached devices.
- Step 2. Unplug all power cords from electrical outlets.
- Step 3. Disconnect all cables attached to the computer. This includes power cords, input/output (I/O) cables, and any other cables that are connected to the computer. Refer to Locating connectors, controls and components to locate the various connectors.
- Step 4. Remove the stand base. Refer to Removing the stand base.
- Step 5. Remove the hinge covers, and then rotate the screwdriver 90 degrees to the right.



- Step 6. lift up the rear cover and slide it out to the bottom direction.



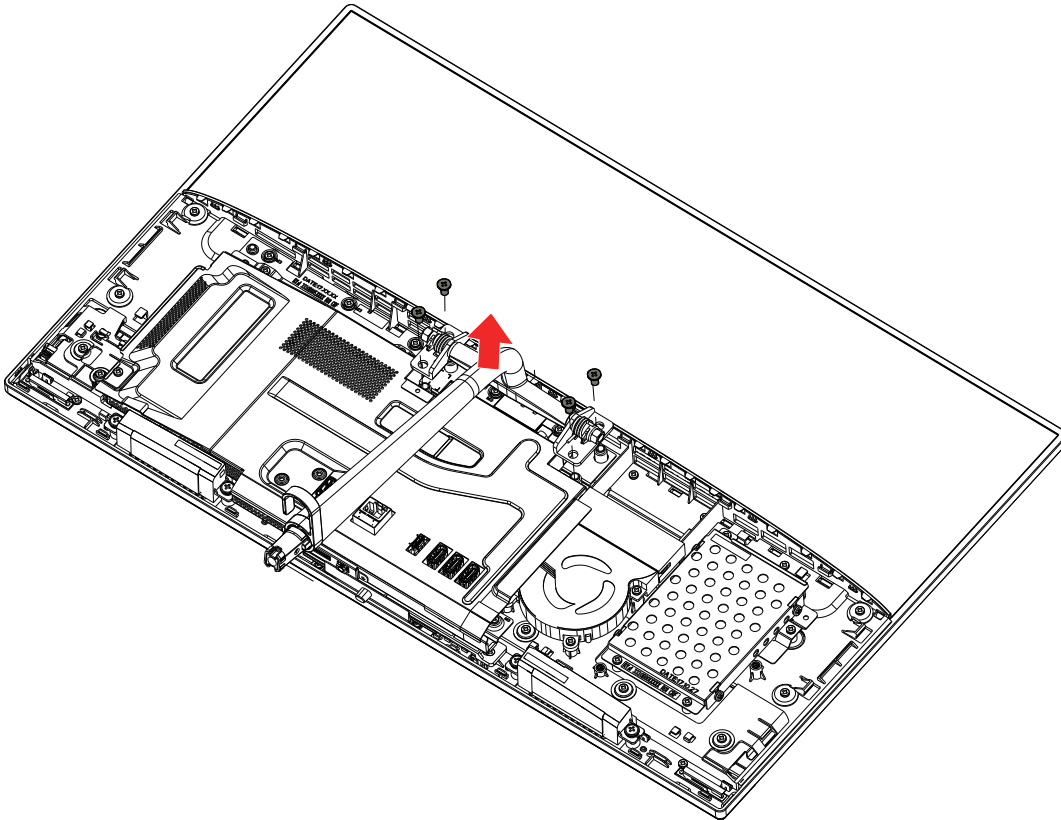
- Step 7. Unplug the cables that connect to the Motherboard.
- Step 8. To reattach the rear cover:
 - a. Align the rear cover with the chassis.
 - b. Press the rear cover until it snaps into position.

Removing the stand holder

Attention: Turn off the computer and wait 3 to 5 minutes to let it cool down before removing the cover.

Note: It may be helpful to place the computer face-down on a soft flat surface for this procedure. Lenovo recommends that you use a blanket, towel, or other soft cloth to protect the touch screen from scratches or other damage.

- Step 1. Remove any media from the drives, shut down the operating system, and turn off the computer and all attached devices.
- Step 2. Unplug all power cords from electrical outlets.
- Step 3. Disconnect all cables attached to the computer. This includes power cords, input/output (I/O) cables, and any other cables that are connected to the computer. Refer to Locating connectors, controls and components to locate the various connectors.
- Step 4. Remove the stand base. Refer to Removing the stand base.
- Step 5. Remove the rear cover. Refer to Removing the rear cover.
- Step 6. Remove the four screws.



- Step 7. To reattach the stand holder:
 - a. Align the holes in the stand holder with the corresponding holes in the chassis.
 - b. Secure the stand holder to the chassis with screws.
- Step 8. Reattach the rear cover, and stand base.

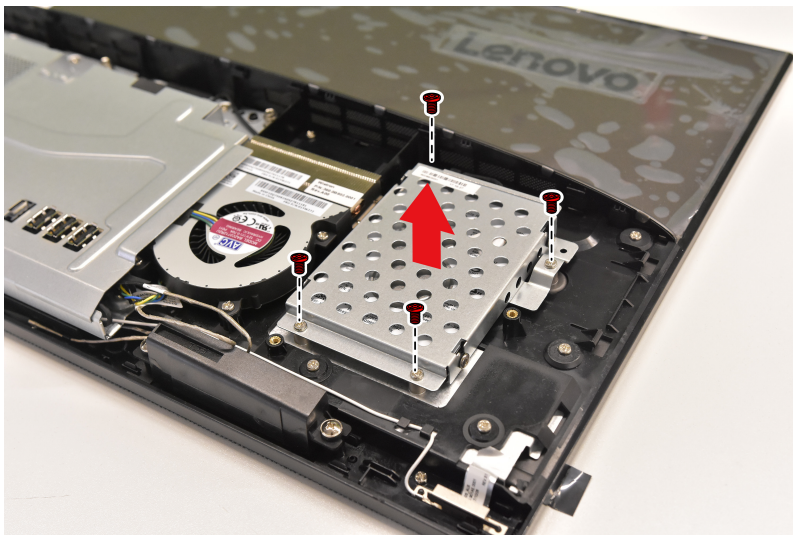
Replacing the hard disk drive

Attention: Turn off the computer and wait 3 to 5 minutes to let it cool down before removing the cover.

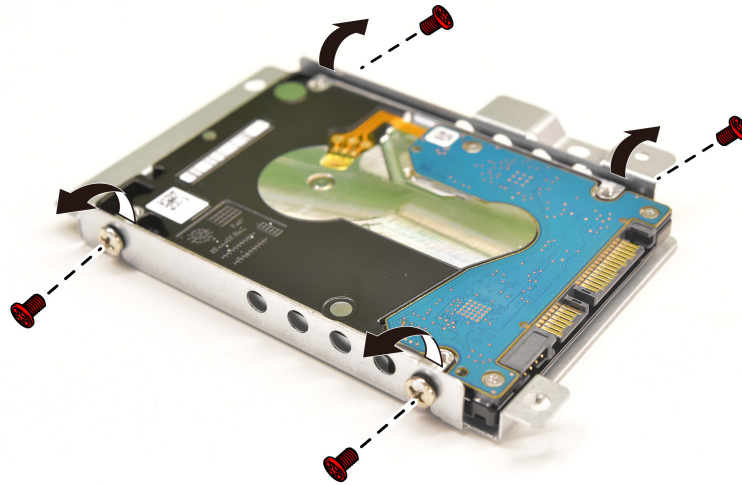
Note: It may be helpful to place the computer face-down on a soft flat surface for this procedure. Lenovo recommends that you use a blanket, towel, or other soft cloth to protect the touch screen from scratches or other damage.

To replace the hard disk drive:

- Step 1. Remove any media from the drives, shut down the operating system, and turn off the computer and all attached devices.
- Step 2. Unplug all power cords from electrical outlets.
- Step 3. Disconnect all cables attached to the computer. This includes power cords, input/output (I/O) cables, and any other cables that are connected to the computer. Refer to Locating connectors, controls and components to locate the various connectors.
- Step 4. Remove the stand base. Refer to Removing the stand base.
- Step 5. Remove the rear cover. Refer to Removing the rear cover.
- Step 6. Remove the four screws that secure the hard disk drive to the bracket.



- Step 7. Disconnect the signal cable from the hard disk drive.
- Step 8. Remove the HDD cover show as below:



Step 9. To install the new hard disk drive:

- a. Line up the new hard disk drive with the bracket and secure it with four screws.
- b. Connect the data and power cables to the new hard disk drive.
- c. Slide the hard disk drive and bracket back into position.

Step 10. Reattach the rear cover and stand base.

Replacing the HDMI switch board

Note: Turn off the computer and wait 3 to 5 minutes to let it cool down before removing the cover.

Note: It may be helpful to place the computer face-down on a soft flat surface for this procedure. Lenovo recommends that you use a blanket, towel, or other soft cloth to protect the computer screen from scratches or other damage.

To replace the HDMI switch board

- Step 1. Remove any media from the drives, shut down the operating system, and turn off the computer and all attached devices.
- Step 2. Unplug all power cords from electrical outlets.
- Step 3. Disconnect all cables attached to the computer. This includes power cords, input/output (I/O) cables, and any other cables that are connected to the computer. Refer to Locating connectors, controls and components to locate the various connectors.
- Step 4. Remove the stand base. Refer to Removing the stand base.
- Step 5. Remove the rear cover. Refer to Removing the rear cover.
- Step 6. Disconnect the cable from the HDMI switch board.
- Step 7. Remove the two screws that secure the HDMI switch board to the motherboard frame, and then lift it up.



- Step 8. To install the new HDMI switch board:
- a. Align the holes in the HDMI switch board with the mounting holes in the motherboard frame.
 - b. Secure the HDMI switch board to the chassis with two screws.

Removing the motherboard frame

Note: Turn off the computer and wait 3 to 5 minutes to let it cool down before removing the cover.

Note: It may be helpful to place the computer face-down on a soft flat surface for this procedure. Lenovo recommends that you use a blanket, towel, or other soft cloth to protect the computer screen from scratches or other damage.

To remove the middle cover:

- Step 1. Remove any media from the drives, shut down the operating system, and turn off the computer and all attached devices.
- Step 2. Unplug all power cords from electrical outlets.
- Step 3. Disconnect all cables attached to the computer. This includes power cords, input/output (I/O) cables, and any other cables that are connected to the computer. Refer to Locating connectors, controls and components to locate the various connectors.
- Step 4. Remove the stand base. Refer to Removing the stand base.
- Step 5. Remove the rear cover. Refer to Removing the rear cover.
- Step 6. Remove the HDMI switch board. Refer to Replacing the HDMI switch board.
- Step 7. Remove the four screws that secure the motherboard frame to the chassis. Lift up the middle cover as shown.



- Step 8. To reattach the motherboard frame:
- Line up the motherboard frame with the chassis.
 - Secure the motherboard frame to the chassis with four screws.

Step 9. Reattach the rear cover, and stand base.

Replacing the speaker system

Note: Turn off the computer and wait 3 to 5 minutes to let it cool down before removing the cover.

Note: It may be helpful to place the computer face-down on a soft flat surface for this procedure. Lenovo recommends that you use a blanket, towel, or other soft cloth to protect the computer screen from scratches or other damage.

To replace the speaker system:

- Remove any media from the drives, shut down the operating system, and turn off the computer and all attached devices.
- Unplug all power cords from electrical outlets.
- Disconnect all cables attached to the computer. This includes power cords, input/output (I/O) cables, and any other cables that are connected to the computer. Refer to Locating connectors, controls and components to locate the various connectors.
- Remove the stand base. Refer to Removing the stand base.
- Remove the rear cover. Refer to Removing the rear cover.
- Remove the motherboard frame. Refer to Removing the motherboard frame.
- Disconnect the speaker system cable from the connector on the motherboard, and then remove the screws that secure the speakers to the chassis.
- Lift up the speaker system to remove it.



- Step 9. To install the new speaker system:
- Secure the new speaker system to the chassis with screws.
 - Connect the cable to the motherboard.

Step 10. Reattach the motherboard frame, rear cover, and stand base.

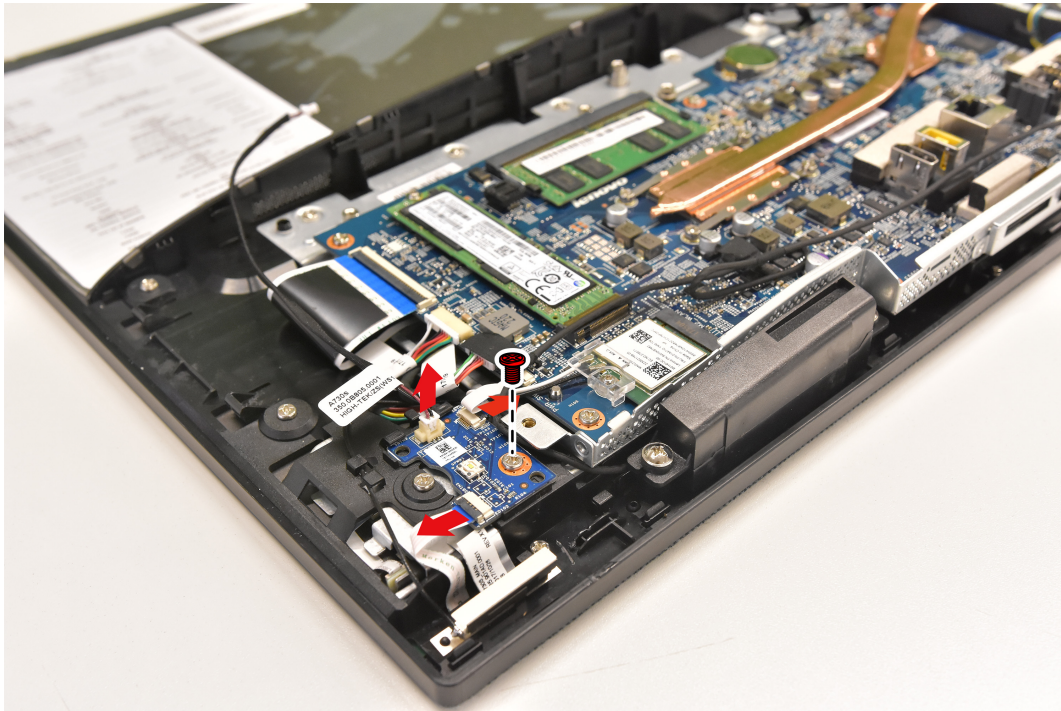
Replacing the power button board

Note: Turn off the computer and wait 3 to 5 minutes to let it cool down before removing the cover.

Note: It may be helpful to place the computer face-down on a soft flat surface for this procedure. Lenovo recommends that you use a blanket, towel, or other soft cloth to protect the computer screen from scratches or other damage.

To replace the power button board

- Remove any media from the drives, shut down the operating system, and turn off the computer and all attached devices.
- Unplug all power cords from electrical outlets.
- Disconnect all cables attached to the computer. This includes power cords, input/output (I/O) cables, and any other cables that are connected to the computer. Refer to Locating connectors, controls and components to locate the various connectors.
- Remove the stand base. Refer to Removing the stand base.
- Remove the rear cover. Refer to Removing the rear cover.
- Disconnect the cables from the power button board.
- Remove the screw that secure the power button board to the chassis, and then lift it up.



- Step 8. To install the new power button board:
- Align the holes in the power button board with the mounting holes in the chassis.
 - Secure the power button board to the chassis with the screw.
- Step 9. Reattach the rear cover, and stand base.

Replacing the system fan

Note: Turn off the computer and wait 3 to 5 minutes to let it cool down before removing the cover.

Note: It may be helpful to place the computer face-down on a soft flat surface for this procedure. Lenovo recommends that you use a blanket, towel, or other soft cloth to protect the computer screen from scratches or other damage.

To replace the system fan

- Remove any media from the drives, shut down the operating system, and turn off the computer and all attached devices.
- Unplug all power cords from electrical outlets.
- Disconnect all cables attached to the computer. This includes power cords, input/output (I/O) cables, and any other cables that are connected to the computer. Refer to Locating connectors, controls and components to locate the various connectors.
- Remove the stand base. Refer to Removing the stand base.
- Remove the rear cover. Refer to Removing the rear cover.
- Remove the motherboard frame. Refer to Removing the motherboard frame.
- Disconnect the system fan power cable from the motherboard.
- Remove the three screws that secures the system fan to the chassis.



Step 9. Lift the system fan up to remove it.

Step 10. To install the new system fan:

- a. Place the new system fan into position, and then secure it to the chassis with three screws.
- b. Connect the system fan power cable to the connector on the motherboard.

Step 11. Reattach the motherboard frame, rear cover and stand base.

Replacing the heat-sink

Note: Turn off the computer and wait 3 to 5 minutes to let it cool down before removing the cover.

Note: It may be helpful to place the computer face-down on a soft flat surface for this procedure. Lenovo recommends that you use a blanket, towel, or other soft cloth to protect the computer screen from scratches or other damage.

To replace the heat-sink:

- Step 1. Remove any media from the drives, shut down the operating system, and turn off the computer and all attached devices.
- Step 2. Unplug all power cords from electrical outlets.
- Step 3. Disconnect all cables attached to the computer. This includes power cords, input/output (I/O) cables, and any other cables that are connected to the computer. Refer to Locating connectors, controls and components to locate the various connectors.
- Step 4. Remove the stand base. Refer to Removing the stand base.
- Step 5. Remove the rear cover. Refer to Removing the rear cover.
- Step 6. Remove the motherboard frame. Refer to Removing the motherboard frame.
- Step 7. Loosen the seven screws that secure the heat-sink to the motherboard, and then lift up the heat-sink and remove it.



Attention: Place the heat-sink upside down on a flat surface to prevent thermal grease from contaminating other components.

Attention: Use an alcohol pad to wipe the thermal grease off the CPU.

- Step 8. To install the new heat-sink:
- Position the new heat-sink on the motherboard so that the seven screws are aligned with the holes in the motherboard and wind shielding.
 - Tighten the screws in numeric order to secure the new heat-sink to the motherboard.
- Step 9. Reattach the motherboard frame, rear cover and stand base.

Replacing the memory module

Attention: Turn off the computer and wait 3 to 5 minutes to let it cool down before removing the cover.

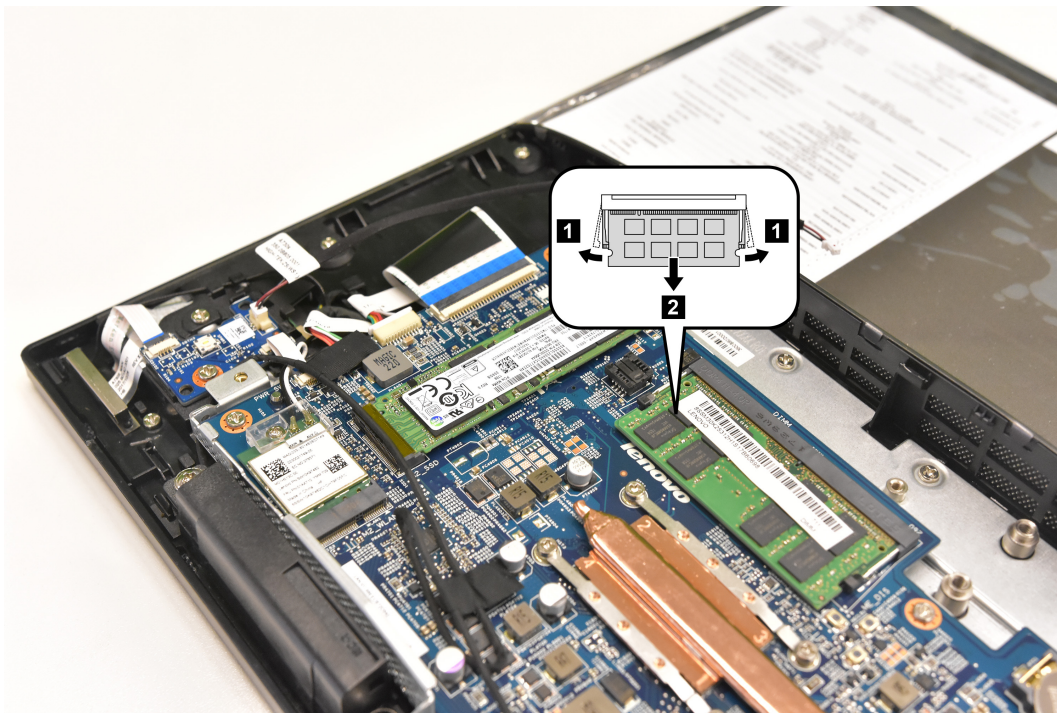
Note: It may be helpful to place the computer face-down on a soft flat surface for this procedure. Lenovo recommends that you use a blanket, towel, or other soft cloth to protect the touch screen from scratches or other damage.

To replace the memory module:

- Remove any media from the drives, shut down the operating system, and turn off the computer and all attached devices.
- Unplug all power cords from electrical outlets.
- Disconnect all cables attached to the computer. This includes power cords, input/output (I/O) cables, and any other cables that are connected to the computer. Refer to Locating connectors, controls and components to locate the various connectors.
- Remove the stand base. Refer to Removing the stand base.
- Remove the rear cover. Refer to Removing the rear cover.

Step 6. Remove the motherboard frame. Refer to Removing the motherboard frame.

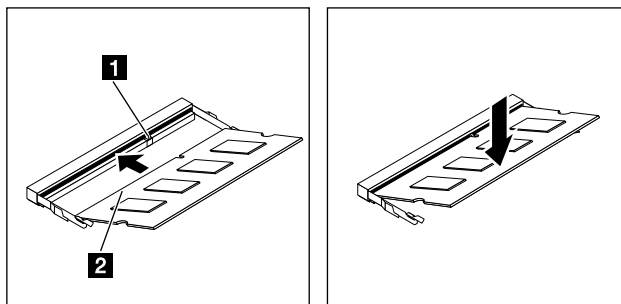
Step 7. Push out the latches on both sides of the memory socket to release the memory module and gently pull the memory module upward to remove it from its socket.



Step 8.

Step 9. To install the new memory module:

- a. Position the new memory module over the memory slot. Ensure that the notch **2** on the memory module aligns correctly with the slot key **1** in the memory socket. Press the memory module down until snaps into position.



- b. Reinstall the memory cover.

Step 10. Reattach the motherboard frame, rear cover and stand base.

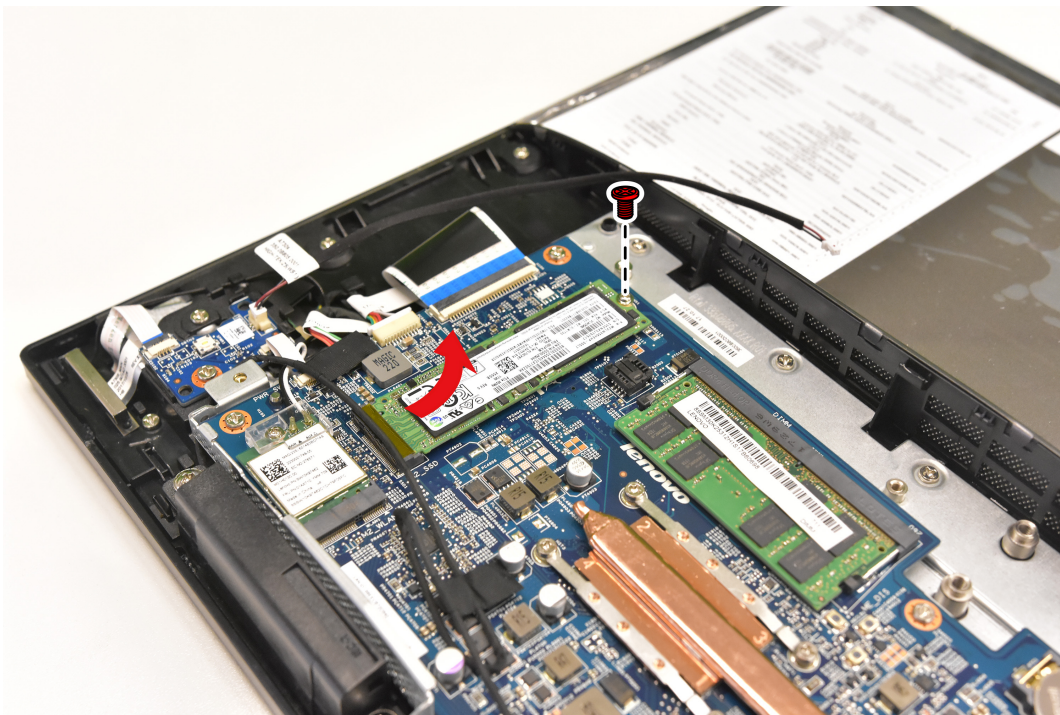
Replacing the solid state drive

Attention: Turn off the computer and wait 3 to 5 minutes to let it cool down before removing the cover.

Note: It may be helpful to place the computer face-down on a soft flat surface for this procedure. Lenovo recommends that you use a blanket, towel, or other soft cloth to protect the touch screen from scratches or other damage.

To replace the solid state drive:

- Step 1. Remove any media from the drives, shut down the operating system, and turn off the computer and all attached devices.
- Step 2. Unplug all power cords from electrical outlets.
- Step 3. Disconnect all cables attached to the computer. This includes power cords, input/output (I/O) cables, and any other cables that are connected to the computer. Refer to Locating connectors, controls and components to locate the various connectors.
- Step 4. Remove the stand base. Refer to Removing the stand base.
- Step 5. Remove the rear cover. Refer to Removing the rear cover.
- Step 6. Remove the motherboard frame. Refer to Removing the motherboard frame.
- Step 7. Remove the screw that secure the solid state drive to the motherboard, and then slide out the solid state drive.



- Step 8. To install the new solid state drive:
 - a. Insert the solid state drive into the slot.
 - b. Secure the new solid state drive to motherboard with one screw.
- Step 9. Reattach the motherboard frame, rear cover and stand base.

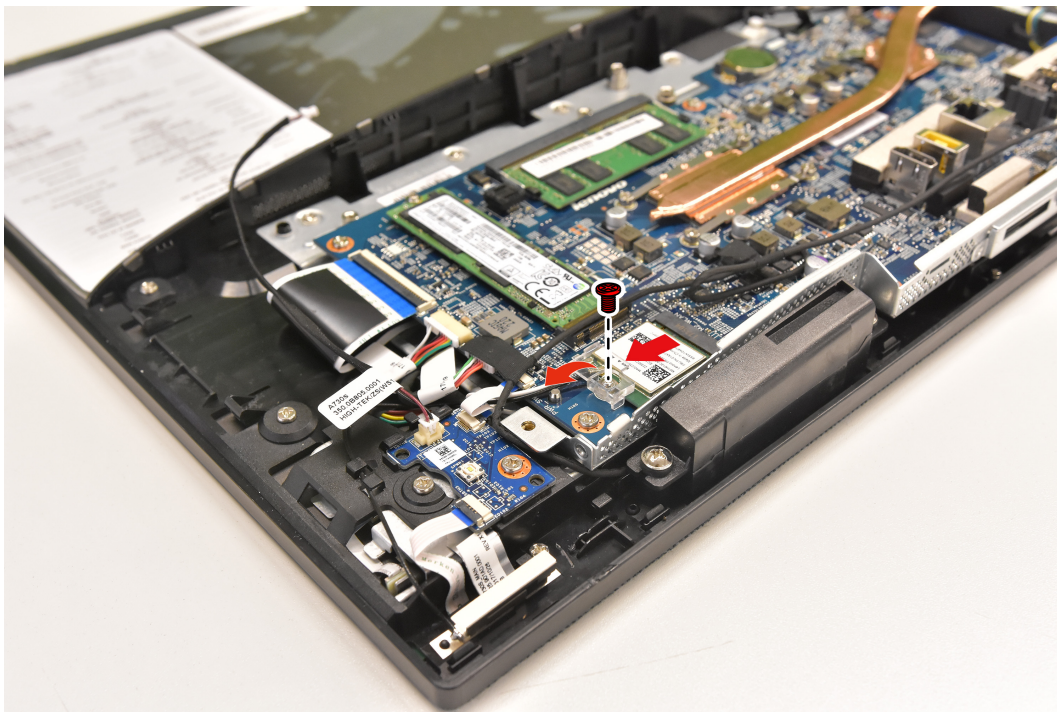
Replacing the Wi-Fi card

Note: Turn off the computer and wait 3 to 5 minutes to let it cool down before removing the cover.

Note: It may be helpful to place the computer face-down on a soft flat surface for this procedure. Lenovo recommends that you use a blanket, towel, or other soft cloth to protect the computer screen from scratches or other damage.

To replace the Wi-Fi card:

- Step 1. Remove any media from the drives, shut down the operating system, and turn off the computer and all attached devices.
- Step 2. Unplug all power cords from electrical outlets.
- Step 3. Disconnect all cables attached to the computer. This includes power cords, input/output (I/O) cables, and any other cables that are connected to the computer. Refer to Locating connectors, controls and components to locate the various connectors.
- Step 4. Remove the stand base. Refer to Removing the stand base.
- Step 5. Remove the rear cover. Refer to Removing the rear cover.
- Step 6. Remove the motherboard frame. Refer to Removing the motherboard frame.
- Step 7. Remove the screw that secures the Wi-Fi card to the motherboard.
- Step 8. Disconnect the antenna cables from the Wi-Fi card.
- Step 9. Pull the Wi-Fi card out of the slot.



- Step 10. To install the new Wi-Fi card:
 - a. Insert the new Wi-Fi card into the Wi-Fi card slot.
 - b. Connect the antenna cables to the new Wi-Fi card.
 - c. Secure new the Wi-Fi card to the motherboard with the screw.
- Step 11. Reattach the motherboard frame, rear cover and stand base.

Replacing the motherboard

Note: Turn off the computer and wait 3 to 5 minutes to let it cool down before removing the cover.

Note: It may be helpful to place the computer face-down on a soft flat surface for this procedure. Lenovo recommends that you use a blanket, towel, or other soft cloth to protect the computer screen from scratches or other damage.

To replace the motherboard:

- Step 1. Remove any media from the drives, shut down the operating system, and turn off the computer and all attached devices.
- Step 2. Unplug all power cords from electrical outlets.
- Step 3. Disconnect all cables attached to the computer. This includes power cords, input/output (I/O) cables, and any other cables that are connected to the computer. Refer to Locating connectors, controls and components to locate the various connectors.
- Step 4. Remove the stand base. Refer to Removing the stand base.
- Step 5. Remove the rear cover. Refer to Removing the rear cover.
- Step 6. Remove the motherboard frame. Refer to Removing the motherboard frame.
- Step 7. Remove the heat-sink. Refer to Replacing the heat-sink.
- Step 8. Remove the memory modules. Refer to Replacing the memory module.
- Step 9. Remove the solid state drive. Refer to Replacing the solid state drive.
- Step 10. Remove the Wi-Fi card. Refer to Replacing the Wi-Fi card.
- Step 11. Remove all the cables from the motherboard.
- Step 12. Remove the six screws that secure the motherboard to the chassis, and then lift the motherboard up to remove it.



- Step 13. To install the new motherboard:
 - a. Align the six screw holes in the new motherboard with the screw holes in the chassis.
 - b. Secure the new motherboard to the chassis with six screws.
 - c. Connect all the cables to the new motherboard.
- Step 14. Install the following parts to the new motherboard:
 - Wi-Fi card
 - Heat-sink
 - Solid state drive

- Memory module

Step 15. Reattach the motherboard frame, rear cover and stand base.

Replacing the camera module

Note: Turn off the computer and wait 3 to 5 minutes to let it cool down before removing the cover.

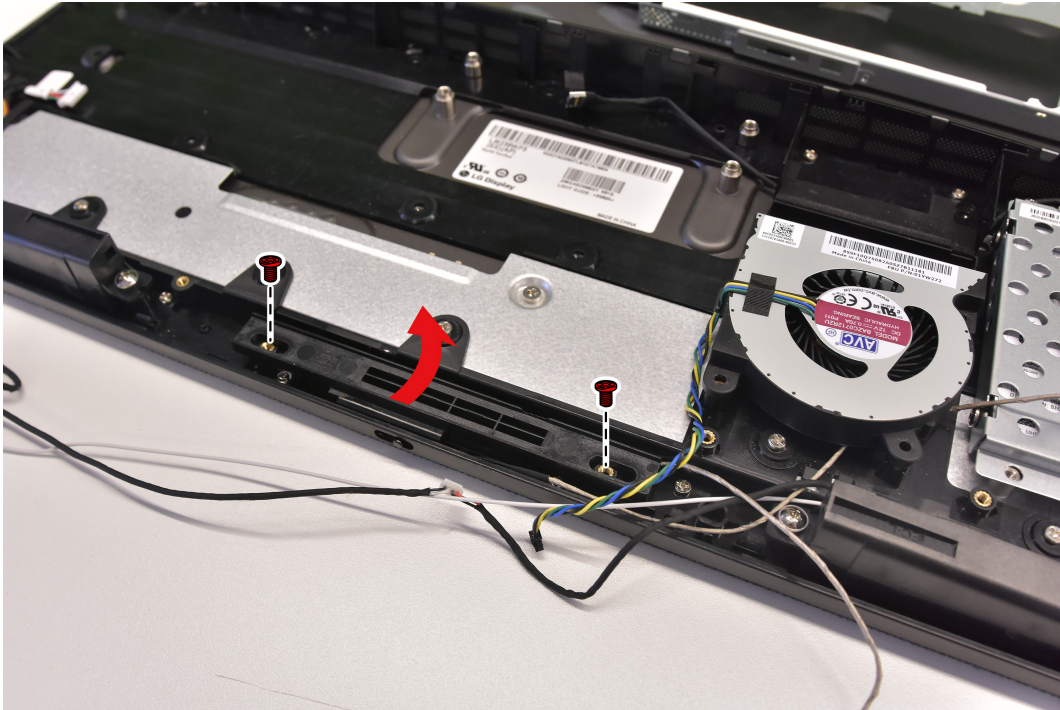
Note: It may be helpful to place the computer face-down on a soft flat surface for this procedure. Lenovo recommends that you use a blanket, towel, or other soft cloth to protect the computer screen from scratches or other damage.

To replace the camera module:

- Step 1. Remove any media from the drives, shut down the operating system, and turn off the computer and all attached devices.
- Step 2. Unplug all power cords from electrical outlets.
- Step 3. Disconnect all cables attached to the computer. This includes power cords, input/output (I/O) cables, and any other cables that are connected to the computer. Refer to Locating connectors, controls and components to locate the various connectors.
- Step 4. Remove the stand base. Refer to Removing the stand base.
- Step 5. Remove the rear cover. Refer to Removing the rear cover.
- Step 6. Remove the stand holder. Refer to Removing the stand holder.
- Step 7. Remove the motherboard frame. Refer to Removing the motherboard frame.
- Step 8. Remove the motherboard. Refer to Replacing the motherboard
- Step 9. Disconnect the camera cable from the corresponding connector on the motherboard.
- Step 10. Remove the LVDS cable from the connectors in the LCD panel.
- Step 11. Remove the motherboard base frame.



Step 12. Remove the screws that secure the camera module to the chassis, and lift it up.



Step 13. To install the new camera module:

- a. Place the new camera module into position, secure the module to the chassis with screws
- b. Connect the camera cable to the motherboard.

Step 14. Reattach the motherboard base frame, motherboard, motherboard top frame, rear cover and stand base.

Replacing the microphone module

Note: Turn off the computer and wait 3 to 5 minutes to let it cool down before removing the cover.

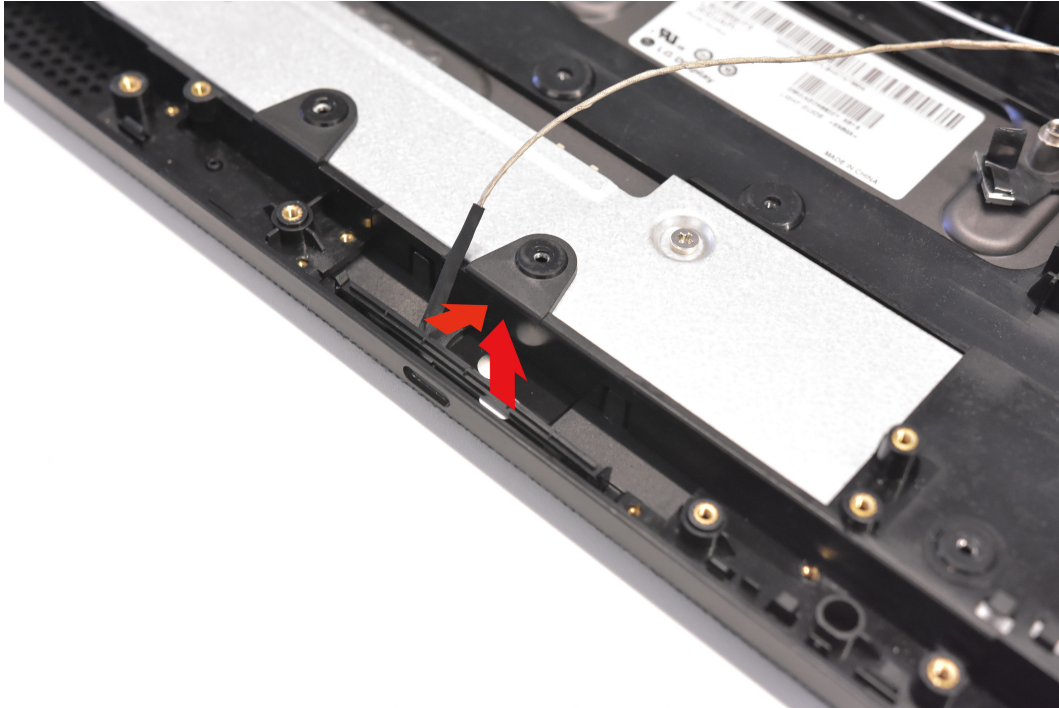
Note: It may be helpful to place the computer face-down on a soft flat surface for this procedure. Lenovo recommends that you use a blanket, towel, or other soft cloth to protect the computer screen from scratches or other damage.

To replace the speaker system:

- Step 1. Remove any media from the drives, shut down the operating system, and turn off the computer and all attached devices.
- Step 2. Unplug all power cords from electrical outlets.
- Step 3. Disconnect all cables attached to the computer. This includes power cords, input/output (I/O) cables, and any other cables that are connected to the computer. Refer to Locating connectors, controls and components to locate the various connectors.
- Step 4. Remove the stand base. Refer to Removing the stand base.
- Step 5. Remove the rear cover. Refer to Removing the rear cover.
- Step 6. Remove the stand holder. Refer to Removing the stand holder.
- Step 7. Remove the motherboard frame. Refer to Removing the motherboard frame.
- Step 8. Remove the motherboard. Refer to Replacing the motherboard

Step 9. Remove the camera module. Refer to Replacing the camera module

Step 10. Disconnect the microphone module cable and lift up the microphone module to remove it.



Step 11. To install the new microphone module:

- a. Secure the new microphone module to the frame.
- b. Connect the cable to the motherboard.

Step 12. Reattach the motherboard base frame, motherboard, motherboard top frame, rear cover and stand base.

Replacing the front decorative cover

Note: Turn off the computer and wait 3 to 5 minutes to let it cool down before removing the cover.

Note: It may be helpful to place the computer face-down on a soft flat surface for this procedure. Lenovo recommends that you use a blanket, towel, or other soft cloth to protect the computer screen from scratches or other damage.

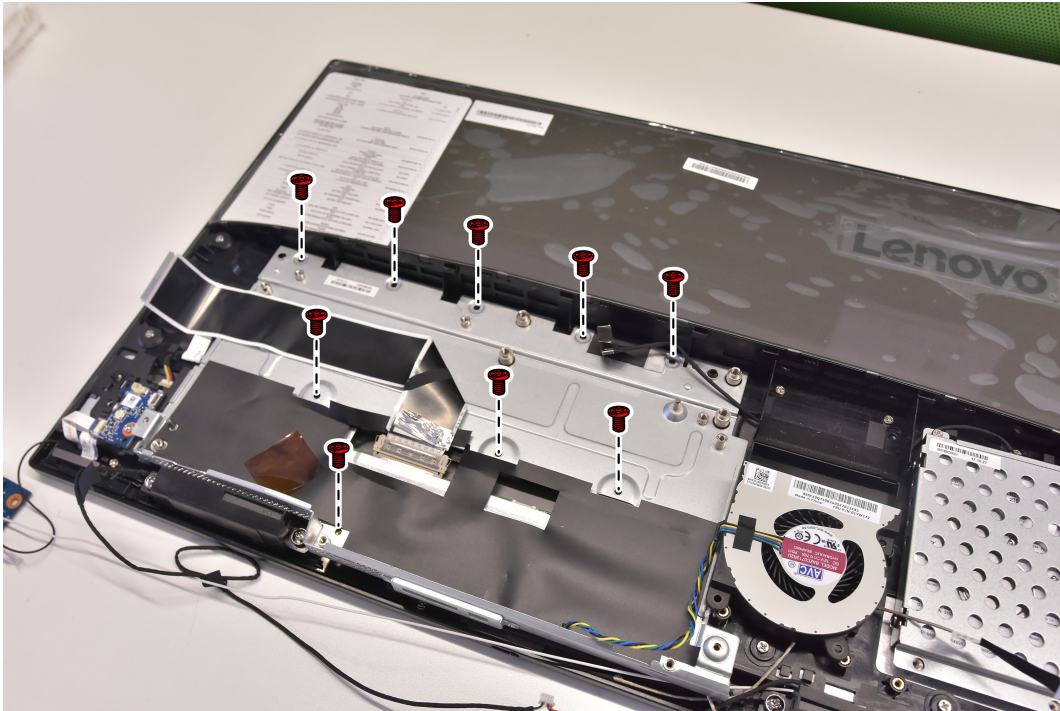
To replace the front decorative cover

- Step 1. Remove any media from the drives, shut down the operating system, and turn off the computer and all attached devices.
- Step 2. Unplug all power cords from electrical outlets.
- Step 3. Disconnect all cables attached to the computer. This includes power cords, input/output (I/O) cables, and any other cables that are connected to the computer. Refer to Locating connectors, controls and components to locate the various connectors.
- Step 4. Remove the stand base. Refer to Removing the stand base.
- Step 5. Remove the rear cover. Refer to Removing the rear cover.
- Step 6. Remove the stand holder. Refer to Removing the stand holder.
- Step 7. Remove the motherboard frame. Refer to Removing the motherboard frame.

Step 8. Remove the motherboard. Refer to Replacing the motherboard

Step 9. Remove the LVDS and touch(touch model only) cables from the connectors in the LCD panel.

Step 10. Remove the motherboard base frame.



Step 11. Remove the four screws that secure the front decorative cover to the chassis.



Step 12. Lift up the front decorative cover as shown to remove it.



Step 13. To install the new front decorative cover:

- a. Align the new front decorative cover with the chassis.
- b. Secure the new front decorative cover to the chassis with screws.
- c. Connect the touch(touch model only), LVDS cables to the connectors in the new LCD panel.

Step 14. Reattach the stand holder, rear cover and stand base.

Replacing the LCD panel module

Note: Turn off the computer and wait 3 to 5 minutes to let it cool down before removing the cover.

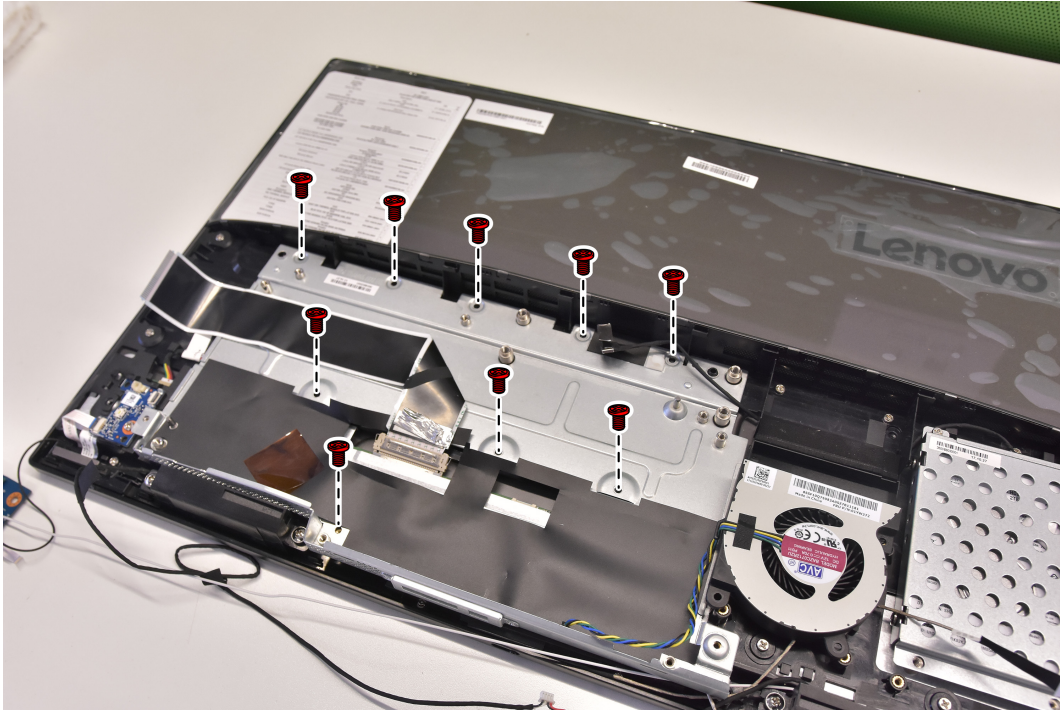
Note: It may be helpful to place the computer face-down on a soft flat surface for this procedure. Lenovo recommends that you use a blanket, towel, or other soft cloth to protect the computer screen from scratches or other damage.

To replace the LCD panel module:

- Step 1. Remove any media from the drives, shut down the operating system, and turn off the computer and all attached devices.
- Step 2. Unplug all power cords from electrical outlets.
- Step 3. Disconnect all cables attached to the computer. This includes power cords, input/output (I/O) cables, and any other cables that are connected to the computer. Refer to Locating connectors, controls and components to locate the various connectors.
- Step 4. Remove the stand base. Refer to Removing the stand base.
- Step 5. Remove the rear cover. Refer to Removing the rear cover.
- Step 6. Remove the stand holder. Refer to Removing the stand holder.
- Step 7. Remove the motherboard frame. Refer to Removing the motherboard frame.
- Step 8. Remove the motherboard. Refer to Replacing the motherboard.
- Step 9. Remove the front decorative cover. Refer to Replacing the front decorative cover

Step 10. Remove the LVDS and Touch cables from the connectors in the LCD panel.

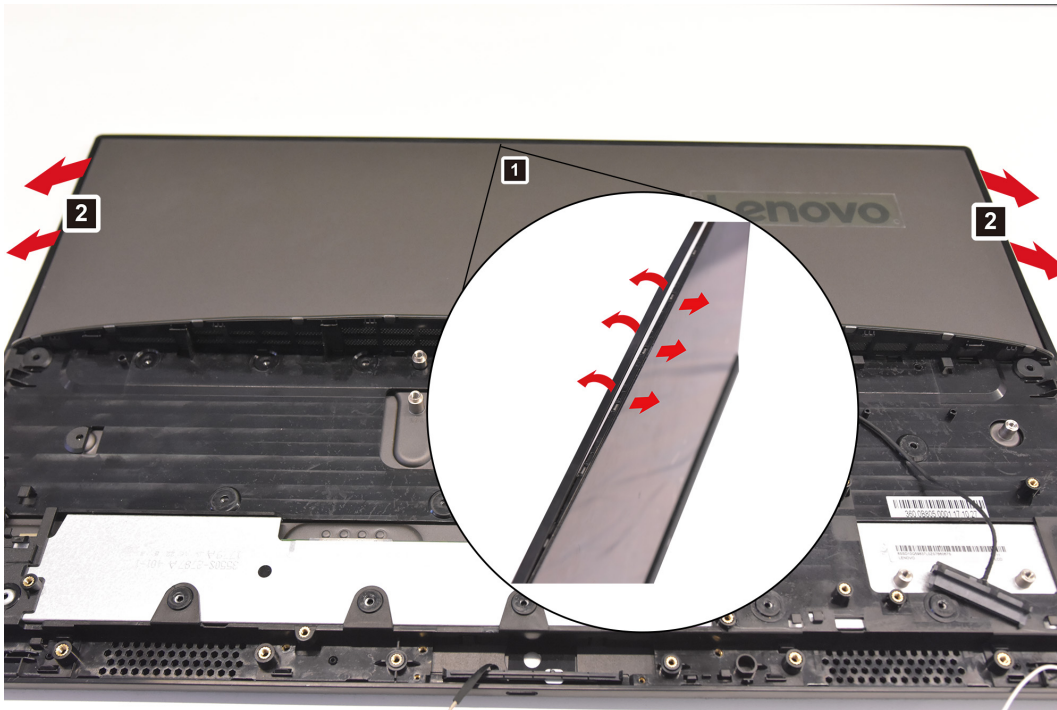
Step 11. Remove the motherboard base frame.

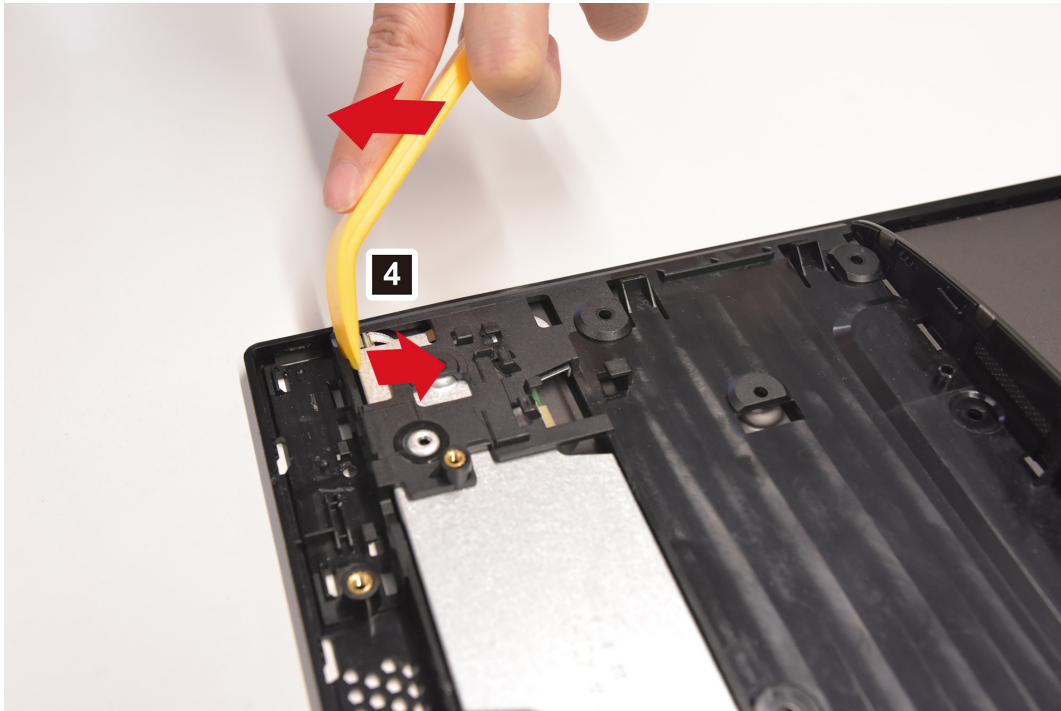


Step 12. Remove the screws that secure the main frame to the LCD panel.



Step 13. Separate the LCD panel from the main frame as shown.





Step 14. To install the new the LCD panel module:

- a. Align the new LCD panel with the main frame.
- b. Secure the new LCD panel to the main frame with screws.
- c. Connect the touch(touch model only) and LVDS cables to the connectors in the new LCD panel.

Step 15. Reattach the motherboard base frame, motherboard, motherboard top frame, stand holder, rear cover and stand base.

Chapter 9. FRU lists

This chapter lists the information on the field replaceable units (FRUs) for ideacentre All-In-One 730S desktop computer.

Attention: Be sure to read and understand all the safety information before replacing any FRUs.

Notes: FRUs that have a 1 or 2 in the CRU column are Customer Replaceable Units (CRUs).

- **1**– identifies parts that are fairly simple to replace, requiring few or no tools.
- **2**– identifies parts that are slightly more difficult to replace.
- **N**– identifies parts that are not to be replaced by the customer.

ideacentre AIO 730S-24IKB Service Parts Listing	
MT: F0DX F0DY	
FruP/N	Description
AC_ADAPTER	
00PC758	AC_ADAPTER,90W,100-240Vac,3P
ANTENNA	
00XJ129	Fru, AIO 730S Antenna
BDPLANAR	
01LM416	i5-8250U UMA HDMI NO DPK
01LM419	i3-7020U UMA HDMI WIN DPK
01LM422	i5-8250U R530 2G HDMI NO DPK
01LM414	i7-8550U UMA HDMI NO DPK
01LM417	i5-8250U UMA HDMI WIN DPK
01LM415	i7-8550U UMA HDMI WIN DPK
01LM424	i3-7020U R530 2G HDMI NO DPK
01LM423	i5-8250U R530 2G HDMI WIN DPK
01LM418	i3-7020U UMA HDMI NO DPK
01LM420	i7-8550U R530 2G HDMI NO DPK
01LM425	i3-7020U R530 2G HDMI WIN DPK
01LM421	i7-8550U R530 2G HDMI WIN DPK
CABLE	
02CW052	C.A Touch Cable AIO730S
02CW045	C.A. MIC TO MB AIO730S
02CW050	C.A HDMI cable, LGD AIO730S
02CW048	C.A. POWER_BD AIO730S
02CW049	C.A LVDS cable, AIO730S
02CW051	C.A Touch ,CONVERTER,AIO730S

02CW053	NT CONVERTER PANEL LGD T,AIO730S
02CW044	C.A. HDD SATA,AIO730S
02CW043	C.A. FR_LED_BD, AIO730S
02CW047	C.A. IR CAMERA CABLE, AVC ,AIO730S
02CW046	C.A. 2D CAMERA CABLE, AVC ,AIO730S
CARDPOP	
01LM582	Power Button Board,AIO 730S
01LM583	HDMI Switch Board,AIO 730S
DISPLAY	
01AG980	LGD Iron grey LM238WF2-SSKP
01AG979	LGD Iron grey touch
FAN	
01YW272	70X12 Sysfan,AIO 730s
HDD_ASM	
00PC559	2.5" 2TB SMR 7mm HDD FRU
00FC428	HDD,500G,5400,7mm,DT2,SATA3,STD
00PC557	HDD,1TB,5400,7mm,DT2,SATA3,SMR
HEATSINK	
01YW271	DIS Thermal Module
01YW270	UMA Thermal Module
KYB_MOUSE	
00PH147	Liteon SB8861 Iron Grey TW
00XH883	WL KM Calliope SR TUR
00XH881	WL KM Calliope SR THAI
00PH146	Liteon SB8861 Iron Grey US
00PH164	Liteon SB8861 Iron Grey BE_EN
00PH163	Liteon SB8861 Iron Grey EN_FR
00PH162	Liteon SB8861 Iron Grey JP
00XH867	WL KM Calliope SR JPN
00XH866	WL KM Calliope SR ITA
00PH154	Liteon SB8861 Iron Grey LA
00PH153	Liteon SB8861 Iron Grey NORDIC
00XH860	WL KM Calliope SR GER
00XH869	WL KM Calliope SR KOR
00XH857	WL KM Calliope SR FRA
00XH846	Primax RFBU71 2.4G SVG US
00XH996	2.4G SVG CZ_SL

00XH894	WL KM Calliope SR CAN ENG/FRA
00XH892	WL KM Calliope SR Nordic
00XH889	WL KM Calliope SR IND ENG
00XH875	WL KM Calliope SR RUS
00PH152	Liteon SB8861 Iron Grey UK
00PH151	Liteon SB8861 Iron Grey RU
00PH150	Liteon SB8861 Iron Grey US_IN
00PH158	Liteon SB8861 Iron Grey ES
00PH169	Liteon SB8861 Iron Grey PT
00XH854	WL KM Calliope SR CZE
00PH160	Liteon SB8861 Iron Grey FR
00XH864	WL KM Calliope SR HUN
00XH863	WL KM Calliope SR HBW
00XH861	WL KM Calliope SR GRE/UK
00XH873	WL KM Calliope SR POR
00XH851	WL KM Calliope SR NoBAT BRL
00XH870	WL KM Calliope SR LA SPA
00PH149	Liteon SB8861 Iron Grey CZ_SL
00XH850	WL KM Calliope SR BEL ENG
00XH847	WL KM Calliope SR ARA
00PH148	Liteon SB8861 Iron Grey TH
00XH878	WL KM Calliope SR SPA
00XH877	WL KM Calliope SR SLK
00PH166	Liteon SB8861 Iron Grey SWISS
00PH156	Liteon SB8861 Iron Grey DE
00PH165	Liteon SB8861 Iron Grey US_EU
00PH155	Liteon SB8861 Iron Grey SA
00XH880	WL KM Calliope SR SWS
00XH885	WL KM Calliope SR Euro ENG
00XH884	WL KM Calliope SR UKE
00XH853	WL KM Calliope SR TC/ENG
00XH852	WL KM Calliope SR BUL
00XH895	WL KM Calliope SR NoBAT LA SPA
00XH886	WL KM Calliope SR SLV
LINECORD	
00XL065	Fru, EU/KR,1M,3P,NON-LH

00XL071	Fru, LINECORD,CH,1M,3P,NON-LH
00XL093	Fru, LINECORD,TW,1M,3P,NON-LH
00XL053	Fru, US/CA,1M,3P,NON-LH
00XL082	Fru, LINECORD,ZA,1M,3P,NON-LH
00XL076	Fru, LINECORD,GB,1M,3P,NON-LH
00XL084	Fru, LINECORD,IL,1M,3P,NON-LH
00XL003	Fru, JP,Anti-TR,1M,2P,NON-LH
00XL063	Fru, EU/KR,1M,3P,NON-LH
00XL080	Fru, LINECORD,AU,1M,3P,NON-LH
00XL073	Fru, LINECORD,IT,1M,3P,NON-LH
00XL061	Fru, LINECORD,BR,1M,3P,NON-LH
00XL087	Fru, LINECORD,CN,1M,3P,NON-LH
01YW107	Fru, LINECORD,TW,1M,3P,NON-LH
00XL059	Fru, LINECORD,AR,1M,3P,NON-LH
00XL057	Fru, LINECORD,AR,1M,3P,NON-LH
00XL058	Fru, LINECORD,AR,1M,3P,NON-LH
00XL066	Fru, LINECORD,DK,1M,3P,NON-LH
00XL070	Fru, LINECORD,CH,1M,3P,NON-LH
00XL078	Fru, LINECORD,AU,1M,3P,NON-LH
00XL092	Fru, LINECORD,TW,1M,3P,NON-LH
00XL089	Fru, LINECORD,CN,1M,3P,NON-LH
00XL090	Fru, LINECORD,CN,1M,3P,NON-LH
00XL081	Fru, LINECORD,ZA,1M,3P,NON-LH
00XL075	Fru, LINECORD,GB,1M,3P,NON-LH
00XL067	Fru, LINECORD,DK,1M,3P,NON-LH
00XL072	Fru, LINECORD,IT,1M,3P,NON-LH
00XL086	Fru, LINECORD,IL,1M,3P,NON-LH
00XL060	Fru, LINECORD,BR,1M,3P,NON-LH
01YW103	Fru, LINECORD,TW,1M,3P,NON-LH
00XL069	Fru, LINECORD,CH,1M,3P,NON-LH
00XL077	Fru, LINECORD,GB,1M,3P,NON-LH
00XL085	Fru, LINECORD,IL,1M,3P,NON-LH
00XL052	Fru, US/CA,1M,3P,NON-LH
00XL002	Fru, JP,Anti-TR,1M,2P,NON-LH
00XL062	Fru, LINECORD,BR,1M,3P,NON-LH
00XL083	Fru, LINECORD,ZA,1M,3P,NON-LH
00XL094	Fru, LINECORD,IN,1M,3P,NON-LH

00XL068	Fru, LINECORD,DK,1M,3P,NON-LH
00XL097	Fru, LINECORD,TH,1M,3P,NON-LH
00XL096	Fru, LINECORD,IN,1M,3P,NON-LH
00XL051	Fru,US/CA,1M,3P,NON-LH
00XL074	Fru, LINECORD,IT,1M,3P,NON-LH
00XL091	Fru, LINECORD,TW,1M,3P,NON-LH
00XL079	Fru, LINECORD,AU,1M,3P,NON-LH
01YW105	Fru, LINECORD,TW,1M,3P,NON-LH
00XL064	Fru, EU/KR,1M,3P,NON-LH
MECH_ASM	
02CW039	ASSY Speaker Cover, IR AIO730S
02CW203	Camera,CA.2D,Silver 730S
02CW204	THERMAL_PAD_SSD_730S
02CW042	ASSY HDD Cage, AVC,AIO730S
02CW038	ASSY Speaker Cover, 2D AIO730S
02CW035	ASSY BACKCOVER_G 2D AIO730S
02CW029	Camera Module,CA.2D 730S
01AH963	ASSY Harman Kardon 3W Speaker
02CW032	ASSY Bezel Grey 2D AIO730s
02CW040	ASSY MAIN Bracket ,AVC, AIO730S
02CW041	ASSY MB Shielding,AVC, AIO730S
02CW031	Assy Mic Module , AIO720
02CW030	Camera Module,CA.IR 730S
02CW034	ASSY Bezel Silver 2D AIO730s
02CW033	ASSY Bezel Grey IR AIO730s
02CW037	ASSY BACKCOVER_S 2D AIO730S
02CW036	ASSY BACKCOVER_G IR AIO730S
MEMORY	
01AG836	4GB DDR4 2666 SoDIMM,Samsung
01AG838	16GB DDR4 2666 SoDIMM,Samsung
01AG829	4GB DDR4 2666 SODIMM,Ramaxel
01AG824	8GB DDR4 2666 SOIMM,Hynix
01AG842	16GB DDR4 2666 SoDIMM,Micron
01AG843	8GB DDR4 2666 SoDIMM,Ramaxel
01AG841	8GB DDR4 2666 SoDIMM,Micron
01AG831	4GB DDR4 2666 SoDIMM,Micron
01AG825	16GB DDR4 2666 SOIMM,Hynix

01AG844	16GB DDR4 2666 SoDIMM,Ramaxel
01AG823	4GB DDR4 2666 SOIMM,Hynix
01AG837	8GB DDR4 2666 SoDIMM,Samsung
OPT_DRIVE	
00XG043	EX-ODD DVD Burner DB65
SSD_ASM	
00UP436	256G,M.2,2280,PCIe3x4,SAM,OPAL
00UP480	16G,M.2,2280,PCIe3x2,INT,STD
00UP650	128G,M.2,2242,PCIe3x2,TOS
00UP448	128G,M.2,2280,PCIe3x4,SAMSG,STD
00UP646	256G,M.2,2280,PCIe3x4,TOS,OPAL
STAND	
02CW027	ASSY Stand Deep Grey AIO730S
02CW028	ASSY Stand Deep silver AIO730s
WIRELESS	
00JT497	Wireless,CMB,IN,3165 ac

Chapter 10. General information

This chapter provides general information that applies to all computer models covered by this manual.

Additional Service Information

This chapter provides additional information that the service representative might find helpful.

Power management

Power management reduces the power consumption of certain components of the computer such as the system power supply, processor, hard disk drives, and some monitors.

Advanced configuration and power interface (ACPI) BIOS

As this computer has an ACPI BIOS system, the operating system is allowed to control the power management features of the computer and the settings for Advanced Power Management (APM) BIOS mode is ignored. Not all operating systems support ACPI BIOS mode.

Automatic Power-On features

The Automatic Power-On features within the Power Management menu allow you to enable and disable features that turn on the computer automatically.

- Wake Up on Alarm: You can specify a date and time at which the computer will be turned on automatically. This can be either a single event, a daily event or a weekly event.
- Wake Up on LAN: This feature allows LAN adapter card to wake the System.