

PART NUMBER DI-000-06696-22D-X1 **REV** _____ **DESCRIPTION** Instruction sheet

SPECIFICATIONS :

Dimensions: 8.5" x 14"
*** Thickness:** 40 lb.
*** Material:** _____
*** Finish:** _____
 _____ : _____
*** For manuals - designates cover specifications**

*** Color(s):** 1 over 1
 1: Black
 2: _____
 3: _____
 4: _____

Spot
 CMYK

*** Fonts:**
 1: _____
 2: _____
 3: _____
 4: _____

Die Line Key:

_____ Die Cut - - - - - Fold Line - · - · - · Kiss Cut · · · · · Cellophane ≡≡≡≡≡ Glue

MANUAL INTERIORS / BINDERY / FOLD SCHEME :

Body Material: _____
Thickness: _____
Bindery
 Die cut **Fold** Saddle Stitch
 Perfect Bind Drill Trim

Color(s): _____ over _____
 1: _____
 2: _____
 3: _____
 4: _____

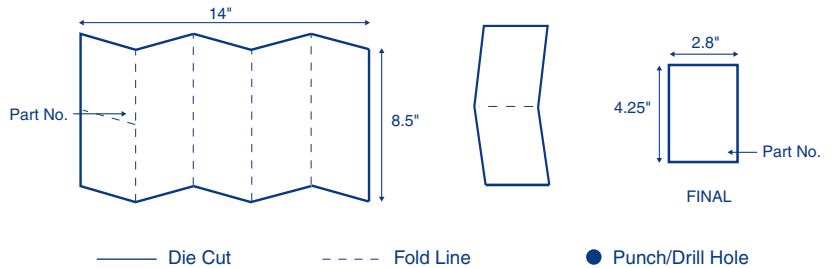
Spot
 CMYK

Fonts:
 1: _____
 2: _____
 3: _____
 4: _____

PROCESS :

Offset Flexo
 Other _____
Line Screen: _____
Angle: _____
Resolution: _____

FOLD SCHEME / BINDERY DIAGRAM



COMMENTS :

The information in this document is the exclusive PROPRIETARY property of LEVITON MANUFACTURING COMPANY, INC. It is disclosed with the understanding that acceptance or review by the recipient constitutes an undertaking by the recipient. (1) to hold this information in strict confidence, and (2) not to disclose, duplicate, copy, modify or use the information for any purpose other than that for which disclosed.

© 2011 Leviton Mfg. Co., Inc. Unpublished, All Rights Reserved

FOR LEVITON USE ONLY

Approvals: **Plant** 08 J. Tang **CQA** _____ **PM** A. Mancuso
 Mktg _____ **Eng** P. Patel **S & A** _____
 Cust _____ **Other** C. Buttitta **Other** V. LoNigro

PN-ARN: RS0117-3761 **ECO Number:** _____ **Pilot Rev:** _____
Artist: D. Hunt **Artwork Release Date:** _____
Notes: _____