

#### WARNINGS

- **TO AVOID FIRE, SHOCK, OR DEATH; TURN OFF POWER AT CIRCUIT BREAKER OR FUSE AND TEST THAT POWER IS OFF BEFORE WIRING!**
- To be installed and/or used in accordance with appropriate electrical codes and regulations.
- If you are unsure about any part of these instructions, consult an electrician.

#### CAUTIONS

- Use this device with **copper or copper clad wire only**.
- For indoor applications only.
- Save these instructions.

### INSTALLATION AND QUICK START SHEET

### ENGLISH

#### Before Installation

- Range up to 75 feet between Lumina RF devices.
- Installs into any single gang device back-box.
- Supports multi-gang installations.
- Multiple devices may be used within the same room for control from multiple locations or to control multiple loads.
- Each room requires at least one room controller.
- Requires Decora® faceplate, sold separately.
- DL057 uses 0-10Vdc low voltage control wires which may be installed using Class 1 or Class 2.

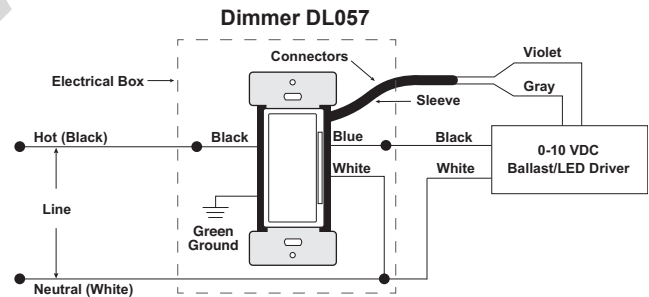
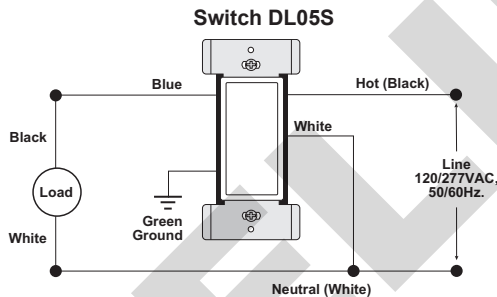
**INSTALLATION NOTE (DL057):** 0-10V Control Wiring - Connect the Violet wire to the + 0-10V line and the Gray wire to the 0-10V common using Class 1 or Class 2 wiring methods as indicated in these instructions, ballast/fixture/driver instructions or ballast/fixture/driver label markings. Observe all requirements of any authority having jurisdiction with respect to wire type, sleeving, isolation methods, and the like.

#### Installation

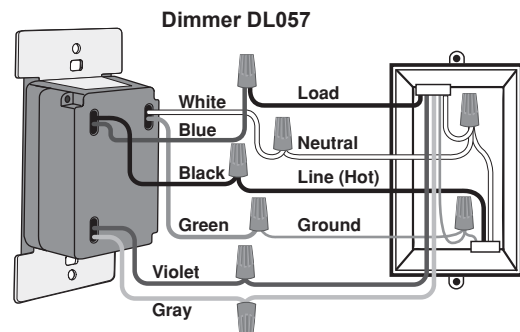
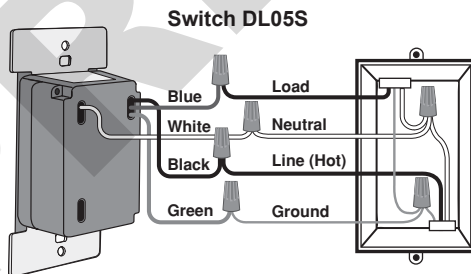
**WARNING: TO AVOID FIRE, SHOCK, OR DEATH; TURN OFF POWER at circuit breaker or fuse and test that power is off before wiring!**

When room controller is also powering load:

1. Strip 3/4 in. and connect as per wiring diagram. Ensure wires are firmly attached and there is no exposed copper.



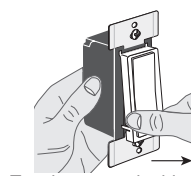
2. Gently place the wires and your device into the wall box and attach with screws provided.



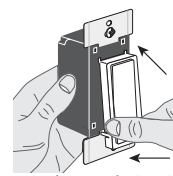
3. Restore power and test ON/OFF operation. Locator light should be ON when switch power is turned OFF.

4. If desired, change faceplate color.

5. Install Decora wallplate.



To release, push sides.

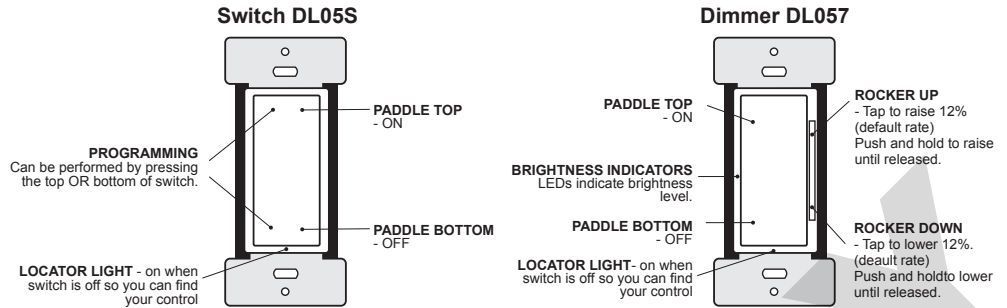


Line up and press in to attach.

## Installation (cont'd)

6. Using the Lumina RF SA app, setup device and configure your system.

Using your system, you can program different functionality, such as pushing the top of the paddle for a presentation scene or pushing the bottom of the paddle for OFF.



## Configuration and Programming

- System Configuration is performed using the Leviton Lumina RF SA application, downloadable from Google Play™ or the App Store™, using any Bluetooth enabled Android or iOS Device. Use the application to:
  - Manually add/remove fixtures, keypads, load controllers, sensors, switches or dimmers to the room for an advanced intelligent lighting control system.
  - Change Sensor Parameters like Sensitivity, Timeout, target light level.
  - Create user defined groups of fixtures and loads.
  - Define Scenes (Meeting, Presentation, Lunch, Dinner, Test, etc.).
- Factory Default – resets device to out of the box state
  - Push top or bottom of paddle for approximately 20 seconds until the locator light flashes AMBER the second time.
  - Release paddle.
  - Locator light will alternate between green/amber while device is resetting, and turn off when complete.
  - When complete, device will reboot. Locator light will blink GREEN slowly while looking for an open network.

**NOTE:** Refinement is required to the initial configuration. Based on some room geometries, the system may not be able to accurately configure itself automatically. The Lumina RF SA smart device application will lead you through this process.

SPECIFICATIONS			
Catalog No.	DL05S-D0Z	DL057-D0Z	DL057-30Z
Input Voltage/Frequency	120-277VAC, 50/60Hz.		347VAC, 60Hz
Input Current			
120V	Standby: 0.2W Max: 0.5W+Load Current	-	
277V	Standby: 0.3W Max: 0.6W+Load Current	-	
347V	-	0.5W+Load Current	
Load Ratings			
LED, CFL, Electronic Ballast @ 120V	8A	-	
LED, CFL, Electronic Ballast @ 277V	5A	-	
LED, CFL, Electronic Ballast @ 347V	-	4A, 1388VA	
Magnetic Ballast @ 120V	10A		
Magnetic Ballast @ 277V	10A		
Magnetic Ballast @ 347V	-	3.45A, 1200VA	
Resistive, Tungsten @ 120V	6.67A	-	
Resistive, Tungsten @ 277V	6.67A	-	
Resistive, Tungsten @ 347V	-	6.67A	
Motor @ 120V	1/4Hp (FLA 5.8A)	-	
Motor @ 277V	1/3Hp (FLA 3.0A)	-	
Motor @ 347V	-	1/4Hp	
IP Rating	IP10		
Network Connections	IEEE 802.15.4, 2.4Ghz, wireless, mesh network up to 75' range between device.		
Operating Temperature	0°C - 40°C (32°F - 104°F)		
Storage Temperature	-40°C to 85°C		
UL Pollution Degree	2		
UL Impulse Voltage	6000V		
Purpose of Control	Operating Control		
Action Control Type	1		

NOTE: Dash indicates model not rated for use

**NOTE:** Dash indicates model not rated for use.

### FOR CANADA ONLY

For warranty information and/or product returns, residents of Canada should contact Leviton in writing at **Leviton Manufacturing of Canada Ltd to the attention of the Quality Assurance Department, 165 Hymus Blvd, Pointe-Claire (Quebec), Canada H9R 1E9** or by telephone at **1 800 405-5320**.

### LIMITED 2 YEAR WARRANTY AND EXCLUSIONS

Leviton warrants to the original consumer purchaser and not for the benefit of anyone else that this product at the time of its sale by Leviton is free of defects in materials and workmanship under normal and proper use for two years from the purchase date. Leviton's only obligation is to correct such defects by repair or replacement, at its option. **For details visit [www.leviton.com](http://www.leviton.com) or call 1-800-824-3005.** This warranty excludes and there is disclaimed liability for labor for removal of this product or reinstallation. This warranty is void if this product is installed improperly or in an improper environment, overloaded, misused, opened, abused, or altered in any manner, or is not used under normal operating conditions or not in accordance with any labels or instructions. **There are no other or implied warranties of any kind, including merchantability and fitness for a particular purpose, but if any implied warranty is required by the applicable jurisdiction, the duration of any such implied warranty, including merchantability and fitness for a particular purpose, is limited to two years. Leviton is not liable for incidental, indirect, special, or consequential damages, including without limitation, damage to, or loss of use of, any equipment, lost sales or profits or delay or failure to perform this warranty obligation.** The remedies provided herein are the exclusive remedies under this warranty, whether based on contract, tort or otherwise.

# ARTWORK PRINT SPECIFICATIONS

**LEVITON**®

**PART NUMBER** PK-A3300-10-00-2A-X2

**REV** \_\_\_\_\_

**DESCRIPTION** Instruction Sheet

## SPECIFICATIONS :

\* Artwork must be printed at 100% (1:1 scale)

\* Thickness: 40 lb.

\* Material: \_\_\_\_\_

\* Finish: \_\_\_\_\_

\_\_\_\_\_ :

\* For manuals - designates cover specifications

\* Color(s): 1 over 1

1: Black

2: \_\_\_\_\_

3: \_\_\_\_\_

4: \_\_\_\_\_

☒ Spot

☐ CMYK

\* Fonts:

1: Helvetica

2: \_\_\_\_\_

3: \_\_\_\_\_

4: \_\_\_\_\_

**Die Line Key:** - . . - Perforate

— Die Cut

- - - Fold Line

- - - - - Kiss Cut

· · · · · Cellophane

≡≡≡≡≡ Glue

## MANUAL INTERIORS / BINDERY / FOLD SCHEME :

Body Material: \_\_\_\_\_

Thickness: \_\_\_\_\_

Bindery

☐ Die cut

☒ Fold

☐ Saddle Stitch

☐ Perfect Bind

☐ Drill

☐ Trim

Color(s): \_\_\_\_\_ over \_\_\_\_\_

1: \_\_\_\_\_

2: \_\_\_\_\_

3: \_\_\_\_\_

4: \_\_\_\_\_

☐ Spot

☐ CMYK

Fonts:

1: \_\_\_\_\_

2: \_\_\_\_\_

3: \_\_\_\_\_

4: \_\_\_\_\_

## PROCESS :

☒ Offset

☐ Flexo

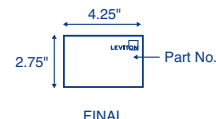
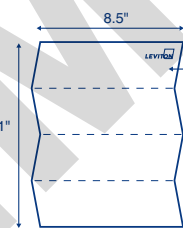
☐ Other

Line Screen: \_\_\_\_\_

Angle: \_\_\_\_\_

Resolution: \_\_\_\_\_

## DIMENSIONS / FOLD SCHEME / BINDERY DIAGRAM



— Die Cut

- - - Fold Line

● Punch/Drill Hole

## COMMENTS :

The information in this document is the exclusive PROPRIETARY property of LEVITON MANUFACTURING COMPANY, INC. It is disclosed with the understanding that acceptance or review by the recipient constitutes an undertaking by the recipient. (1) to hold this information in strict confidence, and (2) not to disclose, duplicate, copy, modify or use the information for any purpose other than that for which disclosed.

## FOR LEVITON USE ONLY

Approvals: ☒ Plant 08 J. Tang

cc: H. Cai

☐ Mktg \_\_\_\_\_

☐ Cust \_\_\_\_\_

☐ CQA \_\_\_\_\_

☒ Eng R. Brown

☒ Other M. Blonder

☒ PM R. Parks, D. Buerer

cc: L. Pukhrabam

☒ S & A D. Moskovkin

cc: F. Tse

☒ Other V. LoNigro

PN-ARN: EM0296-6149

ECR Number: \_\_\_\_\_

Pilot Rev: \_\_\_\_\_

Artist: J. Tilleli

Released Artwork Format: Production PDF

Artwork Release Date: \_\_\_\_\_

Notes: \_\_\_\_\_