



4-Scene Controller with Switch - Single Pole (One Location)

Cat. No. VRCS4-MR, 120/240VAC, 50/60Hz
 Incandescent-1800W – Magnetic Low-Voltage-1800VA (1440W)
 Electronic Low-Voltage-1800W – Fluorescent-1800VA – Supplemental-1/2 HP
INSTALLATION INSTRUCTIONS

WARNINGS AND CAUTIONS:

- ON/OFF LED for remote load status.
- To be installed and/or used in accordance with appropriate electrical codes and regulations.
- If you are unsure about any part of these instructions, consult an electrician.
- Recommended minimum wall box depth is 2-1/2".

WARNINGS AND CAUTIONS:

- Maximum wire length from dimmer to all installed remotes cannot exceed 300 ft (90 m).
- Disconnect power at circuit breaker or fuse when servicing, installing or removing fixture.
- Use this device only with copper or copper clad wire.

INTRODUCTION

Leviton's Vizia RF +™ components are designed to communicate with each other via Radio Frequency (RF) to provide remote control of your lighting. Using RF technology allows Leviton to provide the greatest signal integrity possible. Each module in Leviton's Vizia RF +™ component line is a Z-Wave® enabled device. In a Z-Wave® network, each device is designed to act as a router. These routers will re-transmit the RF signal from one device to another until the intended device is reached. This ensures that the signal is received by its intended device by routing the signal around obstacles and radio dead spots. This 4-Scene Controller is meant to control special scene enabled Z-Wave® products. To control groups of devices that are mixed or do not support scene command class use the Leviton 4-Zone Controller (VRCZ4). Setting up this device requires specific advanced controller functionalities, your controller must be able to associate device to groups and must be able to control the scene controller configuration commands such as the advanced Programming Remote (VRCPG).

FEATURES

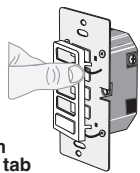
- Switch ON/OFF
- Scene Capable
- This is a Z-Wave® Controller
- Scene control without traveler wires
- Can call 4 scenes
- Can control a single load
- ON/OFF LED
- Two way communication
- RF reliability
- Ease of installation – No new wiring
- Compatible with other Z-Wave® enabled devices

Tools needed to install your device

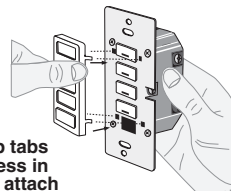
- Slotted/Phillips Screwdriver
- Electrical Tape
- Pliers
- Pencil
- Cutters
- Ruler

Changing the color of your device:

Your 4-Scene controller with switch includes three color options. The controller ships with the White frame attached. To change color of frame, proceed as follows:



Push in side at tab to release



Line up tabs and press in side to attach

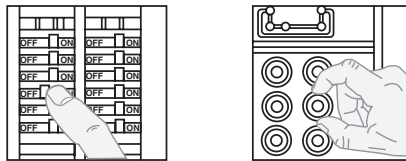
Step 2 cont'd

After frame is removed, remove existing push buttons and replace them with desired color change push buttons. To change the DIM/BRIGHT button, before mounting frame, press out DIM/BRIGHT button (bottom) from back of frame and press in from front of frame new DIM/BRIGHT button. To make IR capable, replace with a DIM/BRIGHT button that has the IR window.

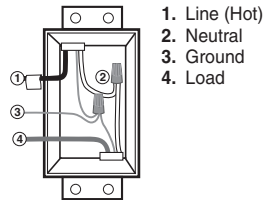
INSTALLING YOUR 4-SCENE CONTROLLER W/ SWITCH

NOTE: Use check boxes when Steps are completed.

Step 1 WARNING: TO AVOID FIRE, SHOCK OR DEATH; TURN OFF POWER at circuit breaker or fuse and test that power is off before wiring!

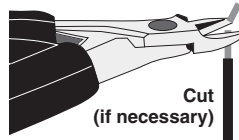


Step 2 Identifying your wiring application (most common):
NOTE: If the wiring in your wall box does not resemble this configuration, consult a qualified electrician.

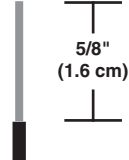


Step 3 Preparing and connecting wires:

This 4-Scene controller with switch can be wired using side wire terminal screws or through backwire openings. Choose appropriate wire stripping specifications accordingly.

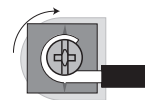


Cut (if necessary)



Strip Gage (measure bare wire here)

Step 3 cont'd



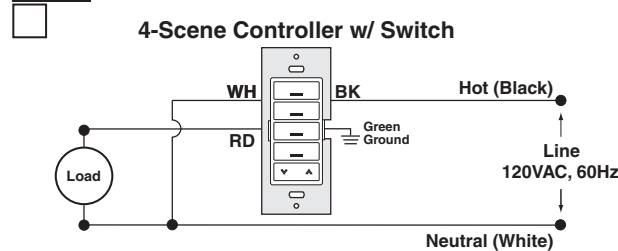
Side Wire Connection
 Side wire terminals accept #14-12 AWG solid wire copper only.



Back Wire (either hole may be used)
 Back wire openings accept #14-12 AWG solid wire copper only.

- Make sure that the ends of the wires from the wall box are straight (cut if necessary).

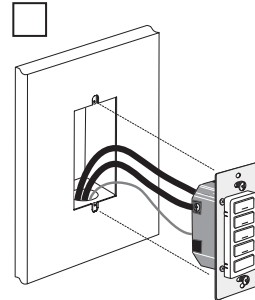
Step 4 Wiring Application:



WIRING DEVICE: Connect wires per WIRING DIAGRAM as follows:

- Green or bare copper wire in wall box to Green terminal screw.
- Line Hot wall box wire to terminal screw marked "BK".
- Line Neutral wall box wire to terminal screw marked "WH".
- Load wall box wire to terminal screw marked "RD".

Step 5 Testing your device prior to mounting in wall box:

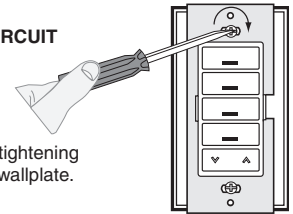


- Position all wires to provide room in outlet wall box for device.
- Ensure that the word "TOP" is facing up on device strap.
- Partially screw in mounting screws in wall box mounting holes.
- Restore power at circuit breaker or fuse.
- LED should turn ON.
- Toggle button 1 ON/OFF to test local load operation.

If LED or LOAD does not turn ON, refer to the TROUBLESHOOTING section.

Step 6 Device Mounting: TURN OFF POWER AT CIRCUIT BREAKER OR FUSE.

Installation may now be completed by tightening mounting screws into wall box. Attach wallplate.

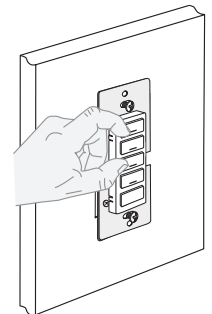


Step 7 Restore Power:
 Restore power at circuit breaker or fuse. Installation is complete.

Step 8 Including 4-Scene Controller with Switch into Z-Wave® Network:

NOTES:

- If using a non-Leviton Programmer/Remote, refer to the Programmer/Remote instruction sheet.
- 4-Scene controllers included into a Z-Wave® network must be updated after you have included all other devices.
- If using the VRCPG Install Checklist feature, go to step C.
- A)** If using a Leviton Z-Wave® Programmer/Remote, Cat. No. VRCPG, press the Menu button and scroll down to System Setup. Press the center button to select System Setup Menu. Choose Advanced Settings. Press the center button to select Network. Press the center button to <Include Node>.
- B)** If using VRCPG Programmer/Remote, you will be prompted to place 4-Scene controller into programming mode.
- C)** To access Program mode, press and hold buttons 1 and 3 (refer to figure). Wait 5 seconds until the LED turns Amber. Release the buttons and the LED will blink Amber. You are now in Programming mode. **NOTE:** If the LED on the 4-scene controller turns solid Red while including, there has been a communication error.
- D)** While standing close to the 4-Scene controller (approximately 1 ft.), press the center button on the Programmer/Remote to <Include> device in the network. **NOTE:** Only one device may be included at any time.
- E)** The Primary Programmer/Remote will assign a Home ID and Node ID for this device. **NOTE:** This information will be stored in the Programmer/Remote to be used for future reference. **NOTE:** You may name or edit your device at this time.
- F)** The 4-Scene controller is now installed in the network. If using VRCPG you will be prompted to include switch, otherwise, please proceed to Step G to include switch.



Step 8 cont'd Including 4-Scene Controller with Switch into Z-Wave® Network:

G) Including local Switch:

- Remain in Advanced Settings.
- Press Center button to select <Include Node>.
- The remote will prompt you to put the device in programming mode.
- Put VRCS4 into programming mode for the Switch by pressing buttons 2 and 4.
- Wait approximately 5 second until button 1 LED turns Amber.
- Release Buttons 2 and 4 and button 1 LED will blink Amber.
- While standing close to the VRCS4 (approximately 1 ft.) press the center button on the Programmer/Remote to <Include> device in the network.
- The Primary Programmer/Remote will assign a Home ID and Node ID to your new switch.
- You may name or edit the device at this time.

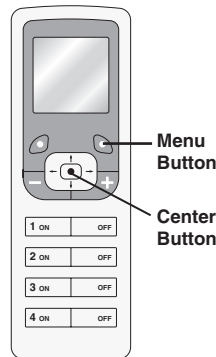
NOTE: By default, switch will be controlled by Button 1 on your scene controller.

H) After all devices are included into the network, the controller must be updated. To update controller proceed as follows:

- If using a non-Leviton Programmer/Remote, refer to the Programmer/Remote instruction sheet for updating controller.
- If using Leviton Z-Wave® Programmer/Remote, Cat. No. VRCPG, press the Menu button and scroll down to System Setup. Press the center button to select System Setup Menu. Choose Advanced Settings. Press the center button to select Network. Scroll down to <Exclude Node> and press the center button.
- Wait until the VRCPG Programmer/Remote confirms completion. Update is done.

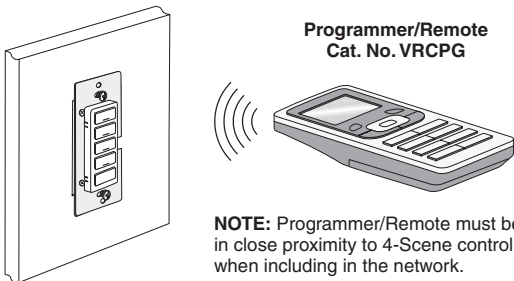
NOTE: If the 4-Scene controller with switch has been successfully Included in the network and the user tries to Include it again without first excluding it from the network, the node ID will remain the same.

Cat. No. VRCPG



Menu Button

Center Button



NOTE: Programmer/Remote must be in close proximity to 4-Scene controller when including in the network.

Step 9 Excluding 4-Scene Controller with Switch from a Z-Wave® Network:

Excluding Load Control:

- A)** If using a Leviton Z-Wave® Programmer/Remote, Cat. No. VRCPG, press the Menu button and scroll down to System Setup. Press the center button to select System Setup Menu. Choose Advanced Settings. Press the center button to select Network. Scroll down to <Exclude Node> and press the center button.
- B)** If using VRCPG Programmer/Remote, you will be prompted to place Local Relay Switch into programming mode.
- C)** To Exclude, press and hold buttons 2 and 4 (**refer to figure**). Wait 5 seconds until the LED turns Amber. Release the buttons and the LED will blink Amber. You are now ready to exclude.
- NOTE:** If the LED on the Load control turns solid Red while excluding, there has been a communication error.
- D)** While standing close to the Load controller (approximately 1 ft.), press the center button on the Programmer/Remote to <Exclude> device from the network.

Excluding 4-Scene controller:

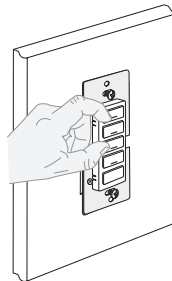
- A)** If using a Leviton Z-Wave® Programmer/Remote, Cat. No. VRCPG, press the Menu button and scroll down to System Setup. Press the center button to select System Setup Menu. Choose Advanced Settings. Press the center button to select Network. Scroll down to <Exclude Node> and press the center button.
- B)** If using VRCPG Programmer/Remote, you will be prompted to place 4-Scene controller into programming mode.
- C)** To access program mode, press and hold buttons 1 and 3 (**refer to figure**). Wait 5 seconds until the LED turns Amber. Release the buttons and the LED will blink Amber. You are now ready to exclude.
- NOTE:** If the LED on the 4-Scene controller turns solid Red while excluding, there has been a communication error.
- D)** While standing close to the 4-Scene controller (approximately 1 ft.), press the center button on the Programmer/Remote to <Exclude> device from the network.

Factory Default:

If your 4-Scene controller with switch is not responding, or you are unable to control it after you have tried to Include/Exclude it multiple times, it may be necessary to reset the 4-Scene controller with switch to its original factory settings. To accomplish this, proceed as follows:

- On the 4-Scene controller with switch (**refer to figure**), press and hold buttons 1 and 3. Wait approximately 10 seconds until the LED turns Amber and then turns solid Red. Allow LED's to blink red twice, release the buttons. The 4-Scene controller with switch is now reset. Once the controller is reset, it will be necessary to Re-Include it to a network before it can be used.

CAUTION: SETTING A DEVICE TO A FACTORY DEFAULT DOES NOT EXCLUDE THAT DEVICE FROM A NETWORK. THE EXCLUSION PROCEDURE MUST STILL BE FOLLOWED TO REMOVE THE DEVICE FROM THE PRIMARY CONTROLLER'S INFORMATION TABLE. FAILURE TO DO SO MAY RESULT IN SYSTEM THAT IS SLOW TO RESPOND, OR MAY FAIL TO RESPOND TO SOME DEVICES.



Step 10 Device Association:

After inclusion process, you must associate Vizia RF light switches, to button on the controllers. Refer to the Primary Programmer/Remote instruction sheet for complete details.

NOTE: This step requires a controller that can create association lists to specific groups 1-4.

NOTE: One (1) Z-Wave® light switch can be associated to multiple controllers (up to five (5) controllers maximum).

NOTE: If using a non-Leviton Programmer/Remote, refer to the Programmer/Remote instruction sheet for associating a Vizia RF+ light switch.

NOTE: Your Local switch will be associated by default to button 1.

Step 11 Scene Programming:

NOTE: All devices associated to the buttons must support Z-Wave® scene command. If a device in the group does not support the scene command it will not be controlled.

- Press and hold desired scene button on 4-Scene Controller until LED blinks Green.
- Adjust any loads associated to that button by turning ON/OFF or Dim/Brighten the load.
- Press button again on 4-Scene Controller and the LED will stop blinking.
- The scene has now been set.

OPERATION

Scene Application:

Push Button (Default settings)

Turn ON from OFF position:
Press – Scene is activated, Scene LED turns ON.

LED will blink until Scene is reached.

Turn OFF from ON position:

Press – Turns all lights in scene OFF, Scene LED turns OFF.

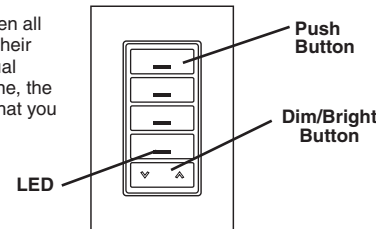
DIM/BRIGHT:

Press left side of Dim/Bright button – Lights in last activated Scene will dim.

Press right side of Dim/Bright button – Lights in last activated Scene will brighten.

NOTE: Controller will only Dim/Bright devices located within direct radio frequency range.

NOTE: LED will be lit only when all lights in scene have reached their preset level. If there is a manual change to any light in the scene, the LED will turn OFF indicating that you are no longer in that scene.



Push Button

Dim/Bright Button

LED

For additional information, contact Leviton's Techline at 1-800-824-3005 or visit Leviton's website at www.ViziaRFplus.com

Protected under U.S. Patent Number 6,388,399 and patents pending and licensed under U.S. Patents Numbers 5,905,442, and 5,982,103

TROUBLESHOOTING

Load Device/Switch:

- **Lights Flickering**
 - Lamp has a bad connection.
 - Wires not secured firmly under terminal screws of switch.
- **Light does not turn ON**
 - Circuit breaker or fuse has tripped.
 - Lamp is burned out.
 - Lamp Neutral connection is not wired.

Controller/Scene:

- **Locator LED on controller does not turn ON**
 - Circuit breaker or fuse has tripped.
 - If 4-Scene controller is powered up and LED does not turn ON, check wiring.
- **Scene Controller does not operate lights**
 - Check association.
 - Ensure that controller was properly updated.
 - Re-program your scene, and ensure each light is in the correct ON/OFF state..
- **LED turns solid Red**
 - Check association.
 - Ensure that each device in the network is within 70 ft. (21m) of another device.

FCC COMPLIANCE STATEMENT

This device complies with Part 15 of the FCC Rules. Operation is subject to following two conditions: (1) this device may not cause harmful interference, and (2) this device must accept any interference received, including interference that may cause undesired operation of the device.

This equipment has been tested and found to comply with the limits for a Class B Digital Device, pursuant to Part 15 of the FCC Rules. These limits are designed to provide reasonable protection against harmful interference in a residential installation. This equipment generates, uses, and can radiate radio frequency energy and, if not installed and used in accordance with the instructions, may cause harmful interference to radio or television reception, which can be determined by turning the equipment OFF and ON, the user is encouraged to try to correct the interference by one or more of the following measures:

- Reorient or relocate the receiving Antenna.
- Increase the separation between the equipment and the receiver.
- Connect the equipment into an outlet on a circuit different from that to which the receiver is connected.
- Consult the dealer or an experienced radio/tv technician for help.

FCC CAUTION

Any changes or modifications not expressly approved by Leviton Manufacturing Co., Inc., could void the user's authority to operate the equipment.

LIMITED 5 YEAR WARRANTY AND EXCLUSIONS

Leviton warrants to the original consumer purchaser and not for the benefit of anyone else that this product at the time of its sale by Leviton is free of defects in materials and workmanship under normal and proper use for five years from the purchase date. Leviton's only obligation is to correct such defects by repair or replacement, at its option, if within such five year period the product is returned prepaid, with proof of purchase date, and a description of the problem to Leviton Manufacturing Co., Inc., Att: Quality Assurance Department, 201 North Service Road, Melville, New York 11747. This warranty excludes and there is disclaimed liability for labor for removal of this product or reinstallation. This warranty is void if this product is installed improperly or in an improper environment, overloaded, misused, opened, abused, or altered in any manner, or is not used under normal operating conditions or not in accordance with any labels or instructions. **There are no other or implied warranties of any kind, including merchantability and fitness for a particular purpose,** but if any implied warranty is required by the applicable jurisdiction, the duration of any such implied warranty, including merchantability and fitness for a particular purpose, is limited to five years. **Leviton is not liable for incidental, indirect, special, or consequential damages, including without limitation, damage to, or loss of use of, any equipment, lost sales or profits or delay or failure to perform this warranty obligation.** The remedies provided herein are the exclusive remedies under this warranty, whether based on contract, tort or otherwise.

PART NUMBER D C **REV** **DESCRIPTION** nstruction sheet

SPECIFICATIONS :

Dimensions: _____
 * Thickness: _____
 * Material: _____
 * Finish: _____
 _____ : _____
 * For manuals - designates cover specifications

* Color(s): _____ over _____
 1: lac Spot
 2: _____
 3: _____ CMYK
 4: _____

* Fonts:
 1: Helvetica
 2: _____
 3: _____
 4: _____

Die Line Key: - . . - - Perforate

_____ Die Cut - - - - - Fold Line - . . - - Perforate Kiss Cut : : : : : Cellophane  Glue

MANUAL INTERIORS / BINDERY / FOLD SCHEME :

Body Material: _____
 Thickness: _____
 Bindery
 Die cut Fold Saddle Stitch
 Perfect Bind Drill Trim

Color(s): _____ over _____
 1: _____ Spot
 2: _____
 3: _____ CMYK
 4: _____

Fonts:
 1: _____
 2: _____
 3: _____
 4: _____

PROCESS :

Offset Flexo
 Other _____
 Line Screen: _____
 Angle: _____
 Resolution: _____

FOLD SCHEME / BINDERY DIAGRAM

_____ Die Cut - - - - - Fold Line Punch/Drill Hole

COMMENTS :

The information in this document is the exclusive PROPRIETARY property of LEVITON MANUFACTURING COMPANY, INC. It is disclosed with the understanding that acceptance or review by the recipient constitutes an undertaking by the recipient, (1) to hold this information in strict confidence, and (2) not to disclose, duplicate, copy, modify or use the information for any purpose other than that for which disclosed.

© 2009 Leviton Mfg. Co., Inc. Unpublished, All Rights Reserved

FOR LEVITON USE ONLY

Approvals: Plant _____ CQA _____ PM _____
 Mktg _____ Eng _____ S & A _____
 Cust _____ Other _____

ARN: _____ ECO Number: _____ Pilot Rev: _____
 Artist: H anche _____ Artwork Release Date: _____
 Notes: _____