



1-Zone Dimming Controller/ Virtual Matching Dimmer Remote

Cat. No. VRCZ1
120VAC, 60Hz

INSTALLATION INSTRUCTIONS

WARNINGS AND CAUTIONS:

- ON/OFF LED and Brightness level LED for 2-way status reporting.
- To be installed and/or used in accordance with appropriate electrical codes and regulations.
- If you are unsure about any part of these instructions, consult a qualified electrician.
- Vizia RF +™ VRCZ1 1-Zone Dimming Controller does not control the load, but provides 3-way or 4-way applications to operate with Vizia RF +™ dimmer.

WARNINGS AND CAUTIONS:

- Recommended minimum wall box depth is 2-1/2".
- No traveler wires are needed. Remote controls via radio frequency (RF) technology.
- Disconnect power at circuit breaker or fuse when servicing, installing or removing fixture.
- Use this device only with copper or copper clad wire. With aluminum wire use only devices marked CO/ALR or CU/AL.

INTRODUCTION

Leviton's Vizia RF +™ components are designed to communicate with each other via Radio Frequency (RF) to provide remote control of your lighting. Using RF technology allows Leviton to provide the greatest signal integrity possible. Each module in Leviton's Vizia RF +™ component line is a Z-Wave® enabled device. In a Z-Wave® network, each device is designed to act as a router. These routers will re-transmit the RF signal from one device to another until the intended device is reached. This ensures that the signal is received by its intended device by routing the signal around obstacles and radio dead spots. The 1-Zone Dimming Controller/Virtual Matching Dimmer Remote is compatible with any Z-Wave® enabled network, regardless of the manufacturer and can also be used with other devices displaying the Z-Wave® logo.

FEATURES

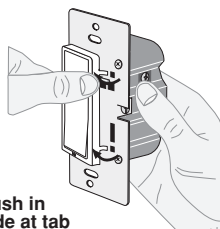
- This is a Z-Wave® Controller
- 3-way or 4-way control without traveler wires
- Controls dimming of remote load
- ON/OFF LED and Brightness level LED
- Two way communication
- RF reliability
- Ease of installation – No new wiring
- Compatible with other Z-Wave® enabled devices

Tools needed to install your 1-Zone Controller

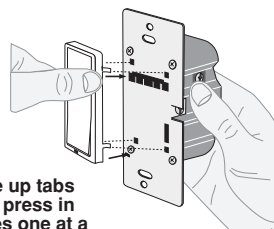
- | | | |
|------------------------------|-----------------|--------|
| Slotted/Phillips Screwdriver | Electrical Tape | Pliers |
| Pencil | Cutters | Ruler |

Changing the color of your 1-Zone Controller:

Your device may include color options. To change color of the face, proceed as follows:



Push in side at tab to release

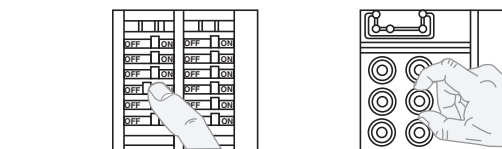


Line up tabs and press in sides one at a time to attach

INSTALLING YOUR 1-ZONE CONTROLLER

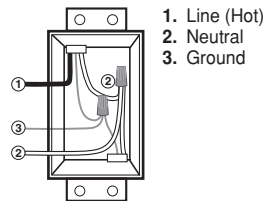
NOTE: Use check boxes when Steps are completed.

Step 1 **WARNING: TO AVOID FIRE SHOCK OR DEATH; TURN OFF POWER** at circuit breaker or fuse and test that power is off before wiring!



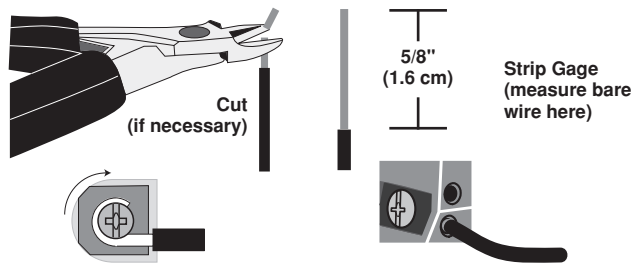
Step 2 **Identifying your wiring application (most common):**

NOTE: If the wiring in your wall box does not resemble this configuration, consult a qualified electrician.



Step 3 **Preparing and connecting wires:**

This 1-zone controller can be wired using side wire terminal screws or through backwire openings. Choose appropriate wire stripping specifications accordingly.

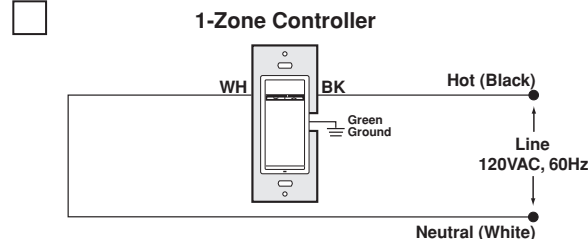


Side Wire Connection
Side wire terminals accept #14 AWG solid wire copper only.

Back Wire (either hole may be used)
Back wire openings use #14-12 AWG solid wire copper only.

- Make sure that the ends of the wires from the wall box are straight (cut if necessary).

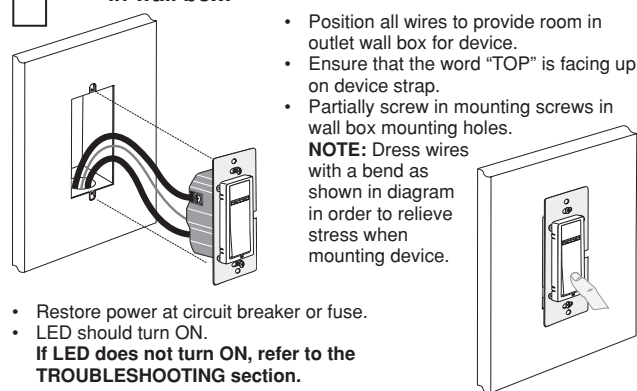
Step 4 **Wiring Application:**



WIRING 1-ZONE CONTROLLER:
Connect wires per **WIRING DIAGRAM** as follows:

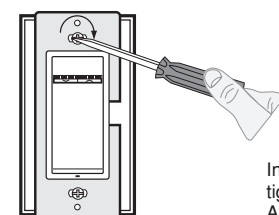
- Green or bare copper wire in wall box to Green terminal screw.
- Line Hot wall box wire to terminal screw marked "BK".
- Line Neutral wall box wire to terminal screw marked "WH".
- **Proceed to Step 5.**

Step 5 **Testing your 1-Zone Controller prior to mounting in wall box:**



- Restore power at circuit breaker or fuse.
- LED should turn ON.
- **If LED does not turn ON, refer to the TROUBLESHOOTING section.**

Step 6 **1-Zone Controller Mounting:**
TURN OFF POWER AT CIRCUIT BREAKER OR FUSE.



Installation may now be completed by tightening mounting screws into wall box. Attach wallplate.

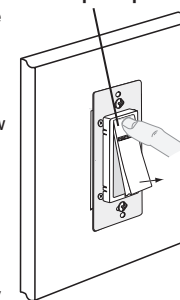
Step 7 **Restore Power:**
Restore power at circuit breaker or fuse.
Installation is complete.

Step 8 **Including 1-Zone Controller into Z-Wave® Network:**

NOTES:

- If using a non-Leviton Programmer/Remote, refer to the Programmer/Remote instruction sheet for Including a device.
- 1-zone controllers included into a Z-Wave® network must be updated after you have included all other devices.
- If using the VRCPG's Install Checklist feature, go directly to Step C.
- A)** If using a Leviton Z-Wave® Programmer/Remote, Cat. No. VRCPG, press the Menu button and scroll down to System Setup. Press the center button to select System Setup Menu. Choose Advanced Settings. Press the center button to select Network. Press the center button to <Include Node>.
- B)** If using VRCPG Programmer/Remote, you will be prompted to place 1-zone controller into programming mode.
- C)** To access Program mode, engage the air-gap switch by gently pressing the top of the push pad until the bottom lifts completely out of the frame and a click is heard (refer to figure). Wait 5 seconds and then press the push pad back into the frame and hold push pad until the LED turns Amber. Release the push pad and the LED should blink Amber. You are now in Programming mode.
NOTE: If the LED on the 1-zone controller turns solid Red while including, there has been a communication error.
- D)** While standing close to the 1-zone controller (approximately 2-5 ft.), press the center button on the Programmer/Remote to <Include> device in the network. **NOTE:** Only one device may be included at any time.
- E)** The VRCPG Programmer/Remote will assign a Home ID, Node ID and Name for this device.
NOTE: This information will be stored in the Programmer/Remote to be used for future reference.
- F)** **The 1-zone controller is now installed in the network.**
NOTE: You may name or edit the node of this device at this time.

Gently press top of push pad

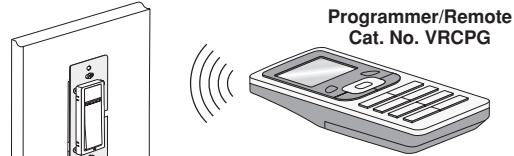
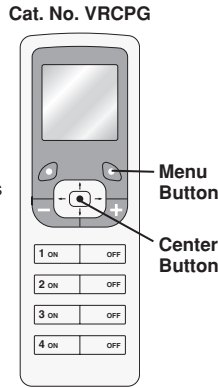


Step 8 cont'd Including 1-Zone Controller into Z-Wave® Network:

- G) After all devices are included into the network, the controller must be updated to allow proper network function. To update controller proceed as follows:
- If using a non-Leviton Programmer/Remote, refer to the Programmer/Remote instruction sheet for updating controller.
 - If using Leviton Z-Wave® Programmer/Remote, Cat. No. VRCPG, press the Menu button and scroll down to System Setup. Press the center button to select System Setup Menu. Choose Advanced Settings. Press the center button to select Network. Press the center button to select Update "cntr". When prompted press push pad on the 1-zone dimming controller.
 - Wait until the VRCPG Programmer/Remote confirms completion. Update is done.

NOTE: If using the VRCPG's Install Checklist feature, after all devices are included, go to Update Controllers step.

NOTE: If the 1-zone controller has been successfully included in the network and the user tries to Include it again without first excluding it from the network, the controller will retain the first node ID it had received and ignore the second.



NOTE: Programmer/Remote must be in close proximity to 1-zone controller when including in the network.

Step 9 Excluding 1-Zone Controller from Z-Wave® Network:

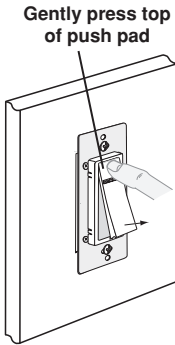
- A) If using a Leviton Z-Wave® Programmer/Remote, Cat. No. VRCPG, press the Menu button and scroll down to System Setup. Press the center button to select System Setup Menu. Choose Advanced Settings. Press the center button to select Network. Scroll down and press the center button to <Exclude Node>.
- B) If using VRCPG Programmer/Remote, you will be prompted to place 1-zone controller into programming mode.
- C) To access Program mode, engage the air-gap switch by gently pressing the top of the push pad until the bottom lifts completely out of the frame and a click is heard (refer to figure). Wait 5 seconds and then press the push pad back into the frame and hold push pad until the LED turns Amber. Release the push pad and the LED should blink Amber. You are now in Programming mode.
- NOTE:** If the LED on the 1-zone controller turns solid Red while excluding, there has been a communication error.
- D) While standing close to the 1-zone controller (approximately 2-5 ft.), press the center button on the Programmer/Remote to <Exclude> device from the network.

Factory Default:

If your 1-zone controller is not responding, or you are unable to control it after you have tried to Include/Exclude it multiple times, it may be necessary to reset the 1-zone controller to its original factory settings. To accomplish this, proceed as follows:

- On the 1-zone controller, engage the air-gap switch by gently pressing the top of the push pad until the bottom lifts completely out of the frame and a click is heard (refer to figure). Wait 5 seconds and then press the push pad back into the frame and hold push pad until the locator LED turns Amber and then turns Red. Release the push pad. The 1-zone controller is now reset. Once the controller is reset, it will be necessary to Re-Include it to a network before it can be used.

CAUTION: SETTING A DEVICE TO A FACTORY DEFAULT DOES NOT EXCLUDE THAT DEVICE FROM A NETWORK. THE EXCLUSION PROCEDURE MUST STILL BE FOLLOWED TO REMOVE THE DEVICE FROM THE PRIMARY PROGRAMMER REMOTE'S INFORMATION TABLE. FAILURE TO DO SO MAY RESULT IN SYSTEM THAT IS SLOW TO RESPOND, OR MAY FAIL TO RESPOND TO SOME DEVICES.



Step 10 Device Association:

After inclusion process, you must associate the devices to the controllers. Refer to the Primary Programmer/Controller instruction sheet for complete details.

NOTE: One (1) Z-Wave® device can be associated to multiple programmer/remotes (up to five (5) programmer/remotes maximum).

NOTE: If using a non-Leviton Programmer/Remote, refer to the Programmer/Remote instruction sheet for Associating a device.

NOTE: Only one Vizia RF +™ dimmer can be associated to the 1-zone controller.

OPERATION

DIM/BRIGHT Bar

BRIGHTEN:
Press the right half of the DIM/BRIGHT Bar
– Lights brighten to desired level.

DIM:
Press the left half of the DIM/BRIGHT Bar
– Lights dim to desired level.

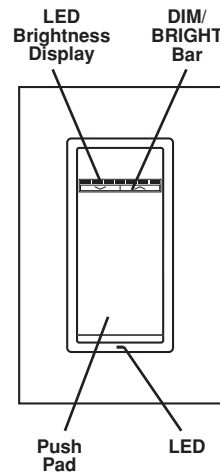
If there is a power outage, when the power is restored, the lights will return to the last setting before the power interruption.

Cleaning: Clean with a damp cloth. **DO NOT** use chemical cleaners.

Virtual Matching Remote Application: Push Pad (Default settings)

Turn ON from OFF position:
Tap – Lights turn ON, LED turns OFF.

Turn OFF from ON position:
Tap – Lights turn OFF, LED turns ON.



ADVANCED PROGRAMMING FEATURES

Definition of Mode

LED Options: Sets the time period in seconds the Locator LED and Brightness display will stay on before extinguishing.

NOTE: The switch will exit program mode after 3 minutes of inactivity.

Program Mode

To enter programming mode:
Press and hold the push pad and then the *right* half of the DIM/BRIGHT bar (^) for 5 seconds until the Locator LED starts and the leftmost LED (LED 1) begin to blink.

The Locator LED will blink once per second to indicate Program Mode, **LED Options.** To change LED Options settings use the DIM/BRIGHT bar to move the LED to the desired preset setting according to the chart below. By tapping the push pad, this setting will automatically be saved and the device will exit programming mode.

LED	LOCATOR LED TIMEOUT	LED BRIGHTNESS DISPLAY OPTIONS
1	Active	Active
2	Active	Turns off 5 seconds after use
3	Turns off 5 seconds after use	Active
4	Turns off 5 seconds after use	Turns off 5 seconds after use
5	Active	LED Bar active
6	Active	LED Bar turns off 5 seconds after use
7	Turns off 5 seconds after use	LED Bar turns off 5 seconds after use

TROUBLESHOOTING

- **Locator LED on controller does not turn ON**
 - Circuit breaker or fuse has tripped.
 - If 1-zone controller is powered up and LED does not turn ON, check wiring.
- **Zone controller does not operate lights**
 - Check association.
 - Ensure that controller was properly updated.

For additional information, contact Leviton's Techline at 1-800-824-3005 or visit Leviton's website at www.ViziaRF+.com

Protected under U.S. Patent Number 6,388,399 and patents pending and licensed under U.S. Patents Numbers 5,905,442, and 5,982,103

FCC COMPLIANCE STATEMENT

This equipment has been tested and found to comply with the limits for a Class B Digital Device, pursuant to Part 15 of the FCC Rules. These limits are designed to provide reasonable protection against harmful interference in a residential installation. This equipment generates, uses, and can radiate radio frequency energy and, if not installed and used in accordance with the instructions, may cause harmful interference to radio communications. However, there is no guarantee that interference will not occur in a particular installation. If this equipment does cause harmful interference to radio or television reception, which can be determined by turning the equipment OFF and ON, the user is encouraged to try to correct the interference by one or more of the following measures:

- Reorient or relocate the receiving Antenna.
- Increase the separation between the equipment and the receiver.
- Connect the equipment into an outlet on a circuit different from that which the receiver is connected.
- Consult the dealer or an experienced radio/tv technician for help.

ID-000-VR CZ1-02A-X2

LIMITED 5 YEAR WARRANTY AND EXCLUSIONS

Leviton warrants to the original consumer purchaser and not for the benefit of anyone else that this product at the time of its sale by Leviton is free of defects in materials and workmanship under normal and proper use for five years from the purchase date. Leviton's only obligation is to correct such defects by repair or replacement, at its option, if within such five year period the product is returned prepaid, with proof of purchase date, and a description of the problem to **Leviton Manufacturing Co., Inc., Attn: Quality Assurance Department, 59-25 Little Neck Parkway, Little Neck, New York 11362-2591.** This warranty excludes and there is disclaimed liability for labor for removal of this product or reinstallation. This warranty is void if this product is installed improperly or in an improper environment, overloaded, misused, opened, abused, or altered in any manner, or is not used under normal operating conditions or not in accordance with any labels or instructions. **There are no other or implied warranties of any kind, including merchantability and fitness for a particular purpose,** but if any implied warranty is required by the applicable jurisdiction, the duration of any such implied warranty, including merchantability and fitness for a particular purpose, is limited to five years. **Leviton is not liable for incidental, indirect, special, or consequential damages, including without limitation, damage to, or loss of use of, any equipment, lost sales or profits or delay or failure to perform this warranty obligation.** The remedies provided herein are the exclusive remedies under this warranty, whether based on contract, tort or otherwise.

LEVITON INSTRUCTION SHEET/MANUAL SPECIFICATIONS

- Artwork No/Rev Level: DI-000-VRCZ1-02A-X2
- Color(s): 1 over 1
 - 1. Black 2. _____
 - 3. _____ 4. _____
- Font Families: Helvetica
- Material
 - Type: 40 Lb. offset
- Coating: _____
- Paper size:
 - Overall size: 14" X 8.5"
 - Final fold size: 2.3" X 4.25"

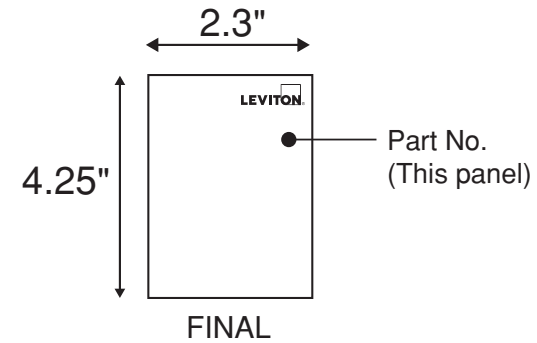
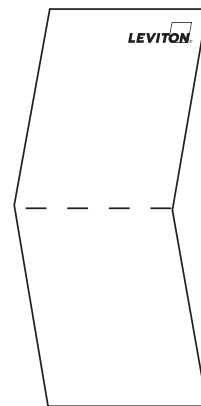
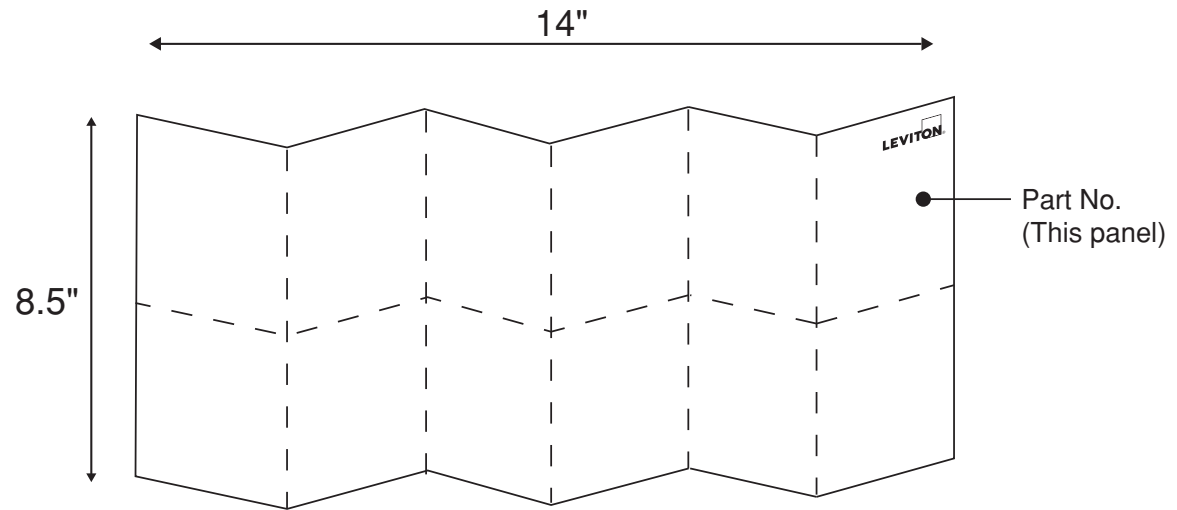
DOCUMENTATION

- ECO No.: N/A
- Artist: H2D Date: 3/14/08

The information in this document is the exclusive PROPRIETARY property of LEVITON MANUFACTURING COMPANY, INC. It is disclosed with the understanding that acceptance or review by the recipient constitutes an undertaking by the recipient. (1) to hold this information in strict confidence, and (2) not to disclose, duplicate, copy, modify, or use the information for any purpose other than that for which disclosed.

Copyright © 1997 Leviton Mfg. Co. Inc.
Unpublished, All Rights Reserved

FOLD SCHEME



— — — — — Fold Line