



LEXIBOOK® LAPTAB®



www.lexibook.com

SETUP GUIDE

The full instruction manual is available in the "Help" folder of the tablet. To access it, please use the File Manager application.

LEXIBOOK®

CAUTION-ELECTRICALLY OPERATED PRODUCT
- NOT RECOMMENDED FOR CHILDREN UNDER 7 YEARS OF AGE.
AS WITH ALL ELECTRIC PRODUCTS, PRECAUTIONS SHOULD BE
OBSERVED DURING HANDLING AND USE TO PREVENT ELECTRIC SHOCK.

MFC140EN





Introduction

Thank you for choosing the Lexibook® LapTab®. We strongly recommend that you read this instruction manual so that you have all the information you need to use your Lexibook® LapTab® to its full potential. Please read all the instructions and safety precautions set out in this manual carefully.

Safety instructions



CAUTION: TO REDUCE THE RISK OF ELECTRIC SHOCK, DO NOT REMOVE COVER (OR BACK). NO USER SERVICEABLE PARTS INSIDE. REFER SERVICING TO QUALIFIED SERVICE PERSONNEL.

The graphic symbols on the back cover of the set mean the following:



DANGEROUS VOLTAGE:

The lightning flash with arrowhead symbol within an equilateral triangle is intended to alert the user to the presence of uninsulated "dangerous voltage" within the product's enclosure that may be of sufficient magnitude to constitute a risk of electric shock to persons.



ATTENTION:

The exclamation point within an equilateral triangle is intended to alert the user to the presence of important operating and maintenance (servicing) instructions in the literature accompanying the appliance.

WARNING:

- To reduce the risk of fire or electric shock, do not expose this appliance to rain or moisture.
- The apparatus shall not be exposed to dripping or splashing and that no objects filled with liquids, such as vases, shall be placed on the apparatus.
- The mains plug is used as the disconnect device, the disconnect device shall remain readily operable.
- In order to disconnect the apparatus from the mains completely, the mains plug should be disconnected from the mains socket outlet completely.

It is recommended that the product needs to be periodically examined for conditions that may result in the risk of fire, electric shock, or injury to persons and that, in an event such conditions, the product should not be use until properly repaired.

RF exposure warning :

This equipment complies with FCC RF radiation exposure limits set forth for an uncontrolled environment. This equipment must be installed and operated in accordance with provided instructions and must not be co-located or operating in conjunction with any other antenna or transmitter. End-users and installers must be provided with antenna installation instructions and transmitter operating conditions for satisfying RF exposure compliance.





IMPORTANT SAFETY INSTRUCTIONS

WARNING: THIS PRODUCT IS NOT A TOY, ADULT SUPERVISION IS REQUIRED.

1. Read these instructions.
2. Keep these instructions.
3. Heed all warnings.
4. Follow all instructions.
5. Do not use the product on your lap for more than 30 minutes, with at least a 5-minute break.
6. Do not use this unit near water.
7. Clean only with a dry cloth.
8. Do not block any ventilation openings. Install in accordance with manufacturer's instructions.
9. To avoid overheating, do not leave the product in a non-ventilated space (e.g. a schoolbag) when it is turned on.
10. Do not install near any heat sources such as radiators, heat registers, stoves or other apparatus (including amplifiers) that produce heat.
11. Do not defeat the safety purpose of the polarized or grounding-type plug. A polarized plug has two blades with one wider than the other. A grounding-type plug has two blades and a third grounding prong. The wide blade or the third prong is provided for your safety. If the provided plug does not fit into your outlet, consult an electrician for replacement of the obsolete outlet.
12. Protect the power cord from being walked on or pinched particularly at plugs, convenience receptacles, and the point where they exit from the unit.
13. Only use attachments/accessories specified by the manufacturer.
14. Unplug this unit during lightning storms or when unused for long periods of time.
15. Refer all servicing to qualified service personnel. Servicing is required when the unit has been damaged in any way, such as the following: the power-supply cord or plug has been damaged; liquid has been spilled or objects have fallen into the unit; and/or the unit has been exposed to rain or moisture, does not operate normally, has changed its performance or has been dropped.
16. Do not overload wall outlet. Use only power source as indicated.
17. Use replacement parts as specified by the manufacturer.
18. Upon completion of any service or repairs to this product, ask the service technician to perform safety checks.
19. Keep the device away from metallic objects (coins, keys, ...). Do not leave it near magnetic fields that could cause data loss or damage the device.
20. Do not drop the device. Do not expose it to mechanical shock, friction or impact. When transporting the device, put it in a protective cover.
21. Protect the device from humidity and rain. If it gets wet, wipe it immediately.
22. Do not touch the power cord when your hand are wet and do not pull on the charger to unplug it.
23. In order to prevent data loss, remember to keep a backup (data or paper) of the information recorded on the device.
24. To prevent interference, do not use the device next to other electronic devices, artificial pacemaker or near medical equipment.
25. Shut off the device in locations that are susceptible to explosions and when traveling by a plane.
26. Do not use the product near inflammable or explosive sources.
27. Keep the device out of direct sunlight and away from other sources of extreme heat or cold.
28. Do not attempt to disassemble the device; it would no longer be covered by the warranty.
29. Do not place sharp objects directly in contact with the surface and do not spray cleaning products directly on the screen.
30. Do not push hard on the screen and do not place objects on top of it. This can cause tears in the screen.
31. The socket-outlet shall be installed near the equipment and must be easily accessible.





Epilepsy warning

Please read the following carefully before you or your children play any video games. Some people are susceptible to epileptic seizures or loss of consciousness at the sight of certain types of flashing lights or elements commonly found in our everyday environment. These people may have seizures when watching certain television images or when playing certain video games. These phenomena may occur even though the subject has no medical history or has never suffered from an epileptic seizure. If you or a member of your family have already shown symptoms linked to epilepsy (dizziness, blurred vision, eye or muscle twitches, loss of consciousness, disorientation, involuntary movement or convulsion) in the presence of light stimuli, please consult your doctor before using. We recommend that parents supervise children playing video games. If you or your child exhibit any of the following symptoms: dizziness, blurred vision, eye or muscle twitches, loss of consciousness, disorientation, involuntary movement or convulsion, stop playing immediately and consult a doctor.

General precautions for using video games:

Do not sit or stand too close to the screen. Play at a safe distance from the screen and as far from it as the cord will allow.

It is preferable to use a small screen for video games. Avoid playing when fatigued or when lacking sleep.

Make sure that you play in a well lit room.

Do not play for periods in excess of one hour before having a break of 10 to 15 minutes.

Contents

When unpacking the item, make sure all the following items are included:

- 1 x Lexibook® LapTab®
- 1 x USB cable
- 1 x Stylus
- 1 x AC adapter

WARNING: Ensure that you keep the gift cards that came with your tablet PC. These will be helpful to you in the event that you need to restore tablet PC settings. You will then be able to download new, bonus content from the cards through our customer service team.

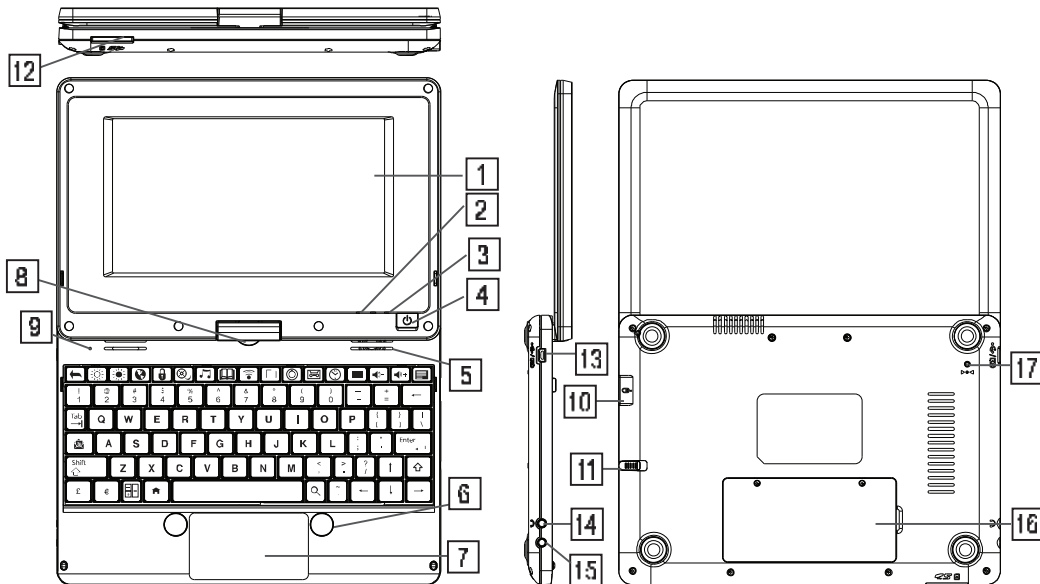
WARNING: All the packaging materials, such as the adhesive tape, plastic sheets, ties and labels are not part of the product and must be discarded to ensure the safety of your children.



Set-up guide

The aim of this section is to present the features of the Lexibook® Laptab®.

Button functions



1. Rotating touch screen
2. Charging indicator
3. Power indicator
4. On / Off button
5. Speakers
6. Mouse buttons
7. Mousepad
8. Pivot
9. Microphone

10. USB mouse port
11. Stylus
12. SD card reader
13. Micro USB port / power input
14. Headphones / earphones input
15. Microphone input
16. Built-in battery
17. Reset button

To switch the device on and off

NOTE: To ensure the touch screen functions at an optimal level, remove the protective film before using.

1. To turn your Lexibook® tablet PC on, press the "On/Off" button (4) located on the right side of the device, for 3 seconds. The blue power indicator LED (3) will let you know that the device is switched on.
 2. Wait during the start-up of the Google Android operating system. Then click on the padlock that appears on the screen and drag it to the open padlock (to the right) and unlock the tablet and access the home page.
 3. To switch your Lexibook® tablet PC off, close all the open applications and press the On/Off button (4) for 3 seconds. The following message will appear on the screen: "Turn off the device?" Click "OK".
- Note:** After a few seconds of inactivity, the device will automatically switch to standby mode. To turn the screen back on, press the On/Off button (4). Please note that closing the lid does not put the tablet PC into standby mode. To do so, just press the On/Off button (4) briefly.





Touch screen settings

When first using, you need to adjust the sensitivity of the touch screen. Follow the on-screen instructions.

Rotating the touch screen

Turn the screen 180° in a clockwise direction (to the right), then lower it over the keyboard to transform it into a tablet PC.

Note: In tablet PC mode, you can view the screen in four directions. This is not the case when in computer mode and using the integrated keyboard.

Connecting headphones/earphones

A headphone input is located on the left hand side of the device (14). This input is suitable for all audio headphones/earphones equipped with a 3.5mm jack. Using headphones/earphones deactivates the speakers.

WARNING: Prolonged exposure to high volume levels, in particular when wearing headphones or earphones, may lead to a temporary or permanent loss of hearing. For this reason, please lower the volume before plugging in headphones or earphones.

Connecting an external mouse

A USB port for a mouse is located on the right hand side of the device (10). This port is suitable for all USB mice (not supplied).

Note: The LapTab's right and left mouse buttons, which have the same functions, allow you to select icons etc. SD card reader

To increase storage capacity, you can insert an SD card (up to 32GB, sold separately) into the built-in reader located on the front side of the device (12).

1. Insert an SD card into the reader in the correct direction (the metal connectors on the card facing down).
2. To remove the card, simply press and release. Then take hold of the card and gently remove it from the slot.

Charging the built-in battery

The Lexibook® tablet PC is equipped with a rechargeable lithium battery that powers your tablet when you don't have access to a power socket.

The battery must be charged for at least 8 to 12 hours before its first use.

1. To charge the battery, plug the DC mains adapter (supplied) into the DC input on the side of the Lexibook® tablet PC and into the power socket.

2. The battery charging symbol  remains on while charging and shows the level. The red charging indicator LED (2) remains on while charging.

Note: You can use the device while it is charging. It is possible that charging the battery will take longer.

3. When the battery is fully charged the  symbol turns completely blue, you can unplug the power adapter and the power socket.

Note:

- Only use the device with the adaptor supplied. Do not use any other adaptor to power the tablet PC.
- If possible, leave the adaptor plugged into the tablet and power socket to recharge the battery.
- Always wait at least 5 seconds after turning off the device before restarting it. Switching the device off and on immediately can damage the electrical circuits.
- The power socket into which the device is plugged must be close and accessible at all times.

The life of the battery varies according to how much the device is used.

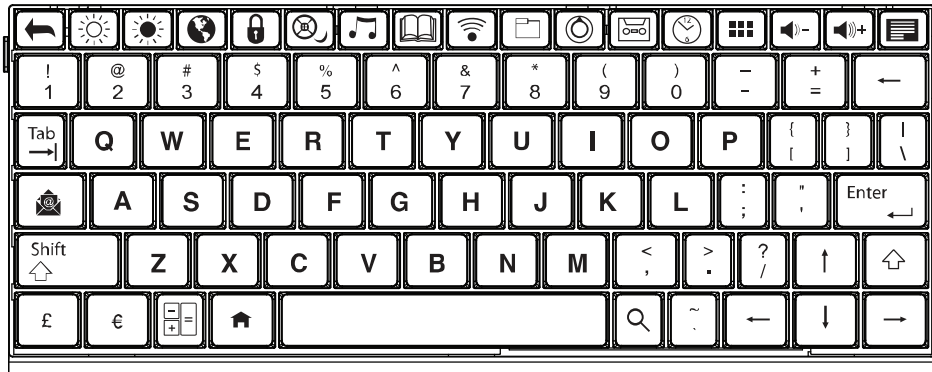




The lithium battery is intended for use only with this tablet. Do not disassemble the battery. Do not dispose of the battery in fire or water. To avoid risk of fire, burns or damage to your battery, do not allow a metal object to touch the battery contacts. Handle a damaged or leaking battery with extreme care. If you come in contact with the electrolyte, wash the exposed area with soap and water. If it contacts the eye, flush the eye with water for 15 minutes and seek medical attention. Do not charge the lithium battery pack if the ambient temperature exceeds 45°C (113°F). When discarding a battery pack, contact your local waste disposal provider regarding local restrictions on the disposal or recycling of batteries. Only use the supplied AC Adaptor for charging.

WARNING: Malfunction or loss of memory may be caused by strong frequency interference or electrostatic discharge. Should any abnormal function occur, reset the unit or unplug the AC/DC adaptor from the mains socket and plug it in again.

Keyboard overview



- | | | | | | |
|--|--------------|--|----------------|--|----------|
| | Return | | Library | | Volume - |
| | Contrast - | | Wi-Fi settings | | Volume + |
| | Contrast + | | Explorer | | Menu |
| | Browser | | Settings | | E-mail |
| | Lock | | Recorder | | Home |
| | Video Player | | Clock | | Search |
| | Audio Player | | Applications | | |

Note : When you choose the "Calculator" function, press "Shift" , and then use the numerical keypad to type in the number of your choice.





Navigation










Navigation using the touch screen

The touch screen allows for fast and fluid navigation. Move your finger or the stylus on the surface of the touch screen to select different menus or applications and navigate throughout your Lexibook® tablet PC.

- To select or launch a menu or an application, press once on the touch screen with your finger or the stylus.
- To move an object, press and hold your finger or the stylus on the object and drag it to where you want to place it.

Note: When first using, you need to adjust the sensitivity of the touch screen. Follow the on-screen instructions.

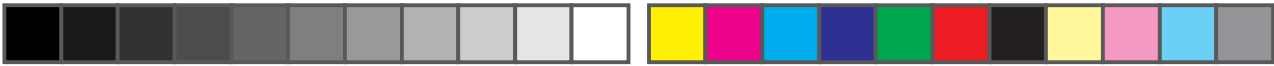
The touch keys on the Lexibook® home screen

- "Return" touch key  : to return to the previous screen or menu.
- "Exit" touch key  : to exit the current application and return to the home screen.
- "Recent" touch key  : for quick access to recently used applications.
- "Volume -" touch key  : to lower the volume.
- "Volume +" touch key  : to increase the volume.
- "Options" touch key  : to access options for the current application (if available).
- "Settings" touch key  : to access options and settings for the tablet PC.
- "Applications" touch key  : to access applications installed on the tablet PC.
- "Search" touch key  : to access the search feature of the tablet PC.

WARNING: Before ever resetting the factory default settings, you must ensure that you save the data on your tablet PC onto another device beforehand.

Resetting will permanently delete all data on your tablet PC.





Wi-Fi Connection

Follow the steps below to activate Wi-Fi on your Lexibook® tablet PC.

1. From the home screen, click the "Settings" button at the bottom right of the screen.



2. Press the top part of the menu that appears, and then click "Settings".



3. Enable Wi-Fi by pressing the blue switch. The list of Wi-Fi networks appears on the right side of the screen. Select your Wi-Fi network by clicking it.

Note: The list of networks is updated every two or three seconds.

Note: The wave symbol  to the right of each network indicates the strength of the signal (the more bars there are, the stronger the signal).

Note: The padlock symbol  to the right of each network indicates if it is secure or not.

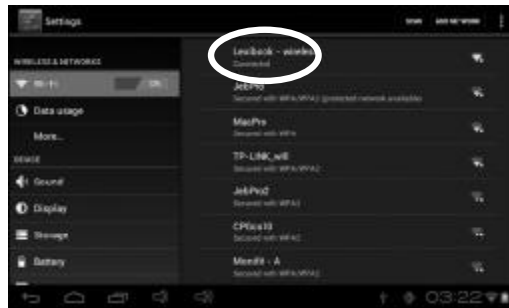




4. Enter the password and press the "Connect" key.



5. Once connected, the message "Connected" appears under the Wi-Fi network enabled.



The Lexibook® Market

With the "Lexibook® Market" you can quickly and easily find and install thousands of applications on your Lexibook® tablet.

On the Lexibook® Market you'll find:

- Thousands of applications selected by Lexibook® to suit the whole family.
- Applications (paid and free) downloadable in a few seconds.
- Regular updates.
- Famous applications (Skype®...) and educational applications (games, puzzles, coloring...)

Important: Ask for help and permission from your parents BEFORE you purchase and download paid applications on your tablet. Lexibook® cannot be held liable for any expense, cost or financial loss, in any form whatsoever, caused by a purchase on the Internet using this tablet.

• Create an account on the Lexibook® Market

1. On the Home screen, click on the Lexibook® Market icon to launch the application.





2. Click on the "Options" button at the bottom of the screen.



Then, click on the "Account statement" that pops up.

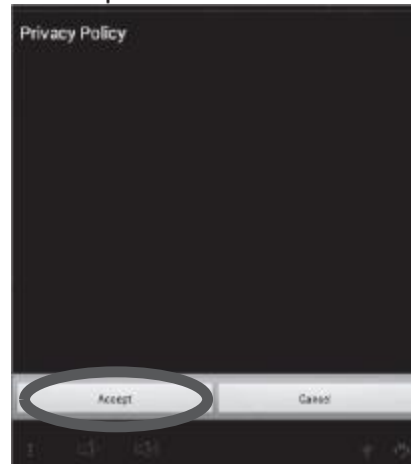
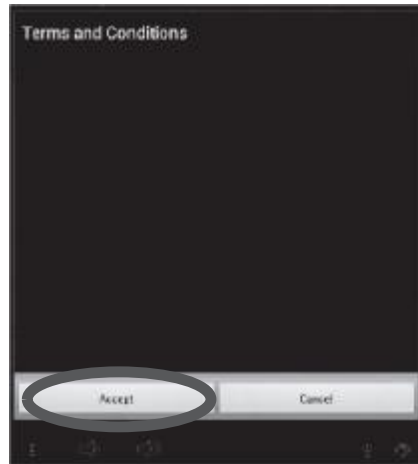


3. Select "I would like to register".





- Two windows, "Terms and Conditions" and "Privacy Policy" will then appear on the screen one after the other. Click on "Accept" each time.



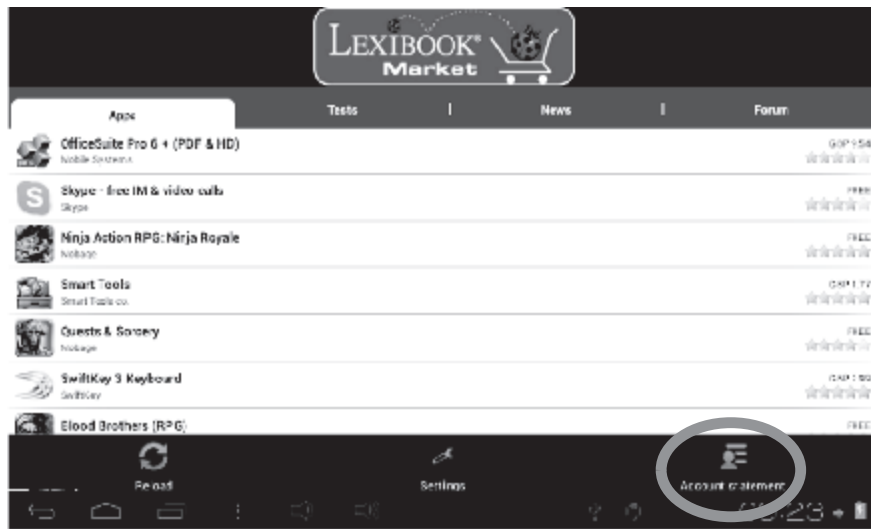
- Complete the registration form by entering your email address, a password and your name and validate by clicking "Submit".



• Connect to the Lexibook® Market

- On the Home screen, click on the icon Lexibook® Market to launch the application.
- Click on the "Options" button at the bottom of the screen, then on "Account statement".





3. Enter your email address and your password, then press "Save". You can also select the option "Remember login details" if you do not wish to enter your information whenever you connect to the Lexibook® Market.



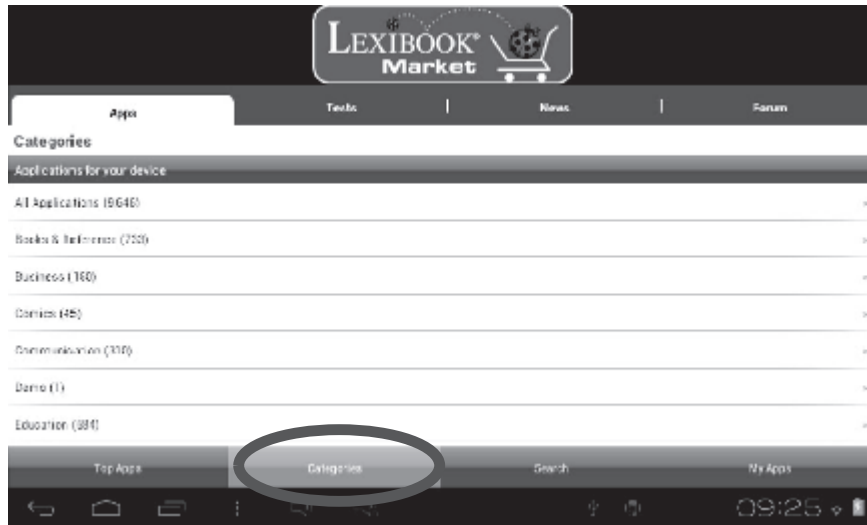
• **Search for applications on the Lexibook® Market**

Three categories of applications are available:

- Applications for your device
- Games for your device
- Additional Apps

Click on "Categories" to bring up the menu and discover the subcategories.





You can also look for applications on the Lexibook® Market using the search engine:

1. Click on the "Search" button of the tool bar.



2. Click on the input field of the search box to display the virtual keyboard. Type in the keyword(s) for your search, and then press "Search" to confirm and start the search.





• **Install an application on the tablet**

1. Inside the Lexibook® Market, click on the application you want to download.
2. Please be patient while your application loads.



Loading...



3. Click on "Install" to begin the installation.

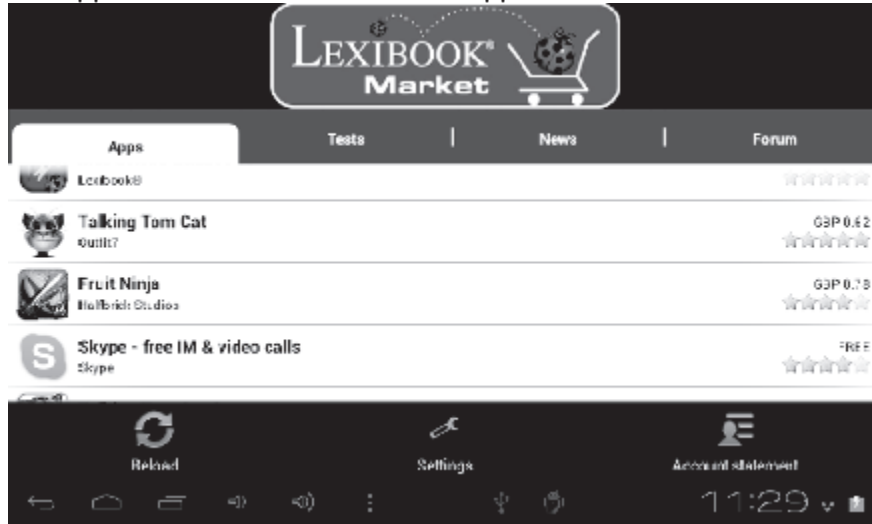


4. A confirmation window appears.





5. The application is then available in the applications menu.



Find purchased applications

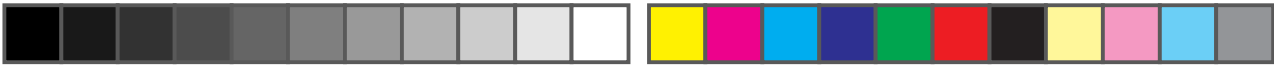
If you have uninstalled a previously purchased application, you can reinstall it without having to purchase it a second time.

1. Connect to the Lexibook® Market by identifying yourself (see "Connect to the Lexibook® Market").
2. On the search screen (see "Find purchased applications"), type the name of the previously downloaded application.
3. If you have previously purchased the application, the word "Purchased" will appear on the top right corner of the screen.



4. To reinstall the application, click on "Install". You will not be asked to make any payment.

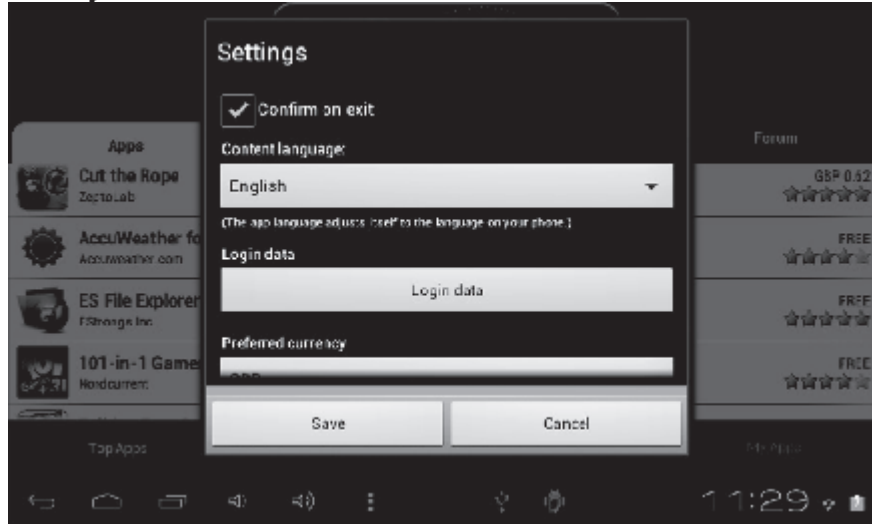




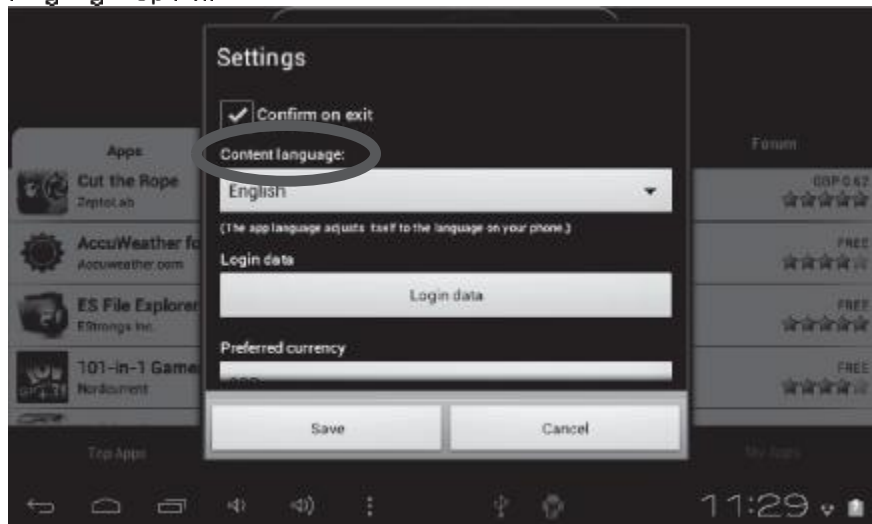
• Changing the Lexibook® Market language

By default, the Lexibook® Market is displayed in the language of your tablet. Should this not be the case, or should you wish to display the Lexibook® Market in a different language, please follow the steps below.

1. From the Home screen of the Lexibook® Market, press the "Options" touch button, and then press the "Settings" button that pops up, represented by a monkey wrench.

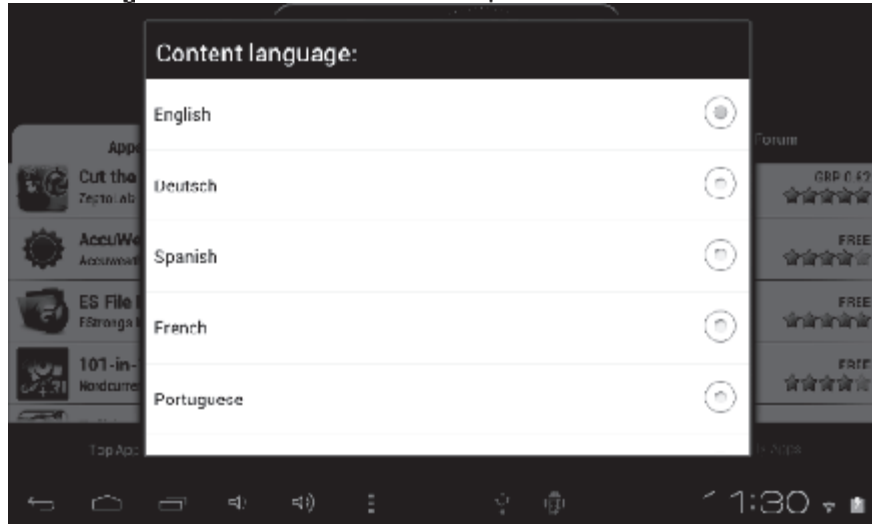


2. In the menu that shows up, press the arrow (facing down) from the "Content language" option.

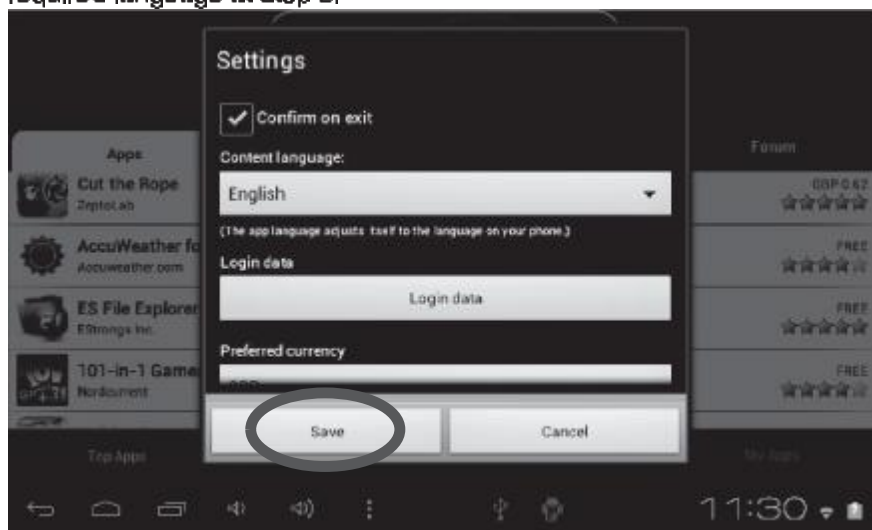




3. In the drop-down list that shows up, select the language required. To do so, slide a finger toward the bottom or the top of the screen.



4. Press the "Save" button in the bottom-left corner. The Lexibook® Market is now displayed in the language required. To display the Lexibook® Market in a different language, repeat step 1 to 4 and select the required language at step 3.



Note: Lexibook® are continually improving their products. To obtain the latest version of the Lexibook® Market and download the latest updates, please visit the following link: <http://www.lexibook.com/lexibook-market-app.html>. This link is also accessible directly from the "Lexibook Update" shortcut, located on the Home screen of your tablet. Help us improve the Lexibook® Market! Feel free to contact Lexibook Customer Service if you notice inappropriate applications.





The Lexibook® Videostore

Thanks to the Lexibook® Videostore application you can watch your favourite cartoons on your tablet PC. You have direct access to the Kcbillion video catalogue and your favourite cartoon characters.

Important Notes: Ask your parents for help and permission before buying videos on the Lexibook® Videostore. In order to access the Lexibook® Videostore, your tablet PC must be connected to a Wi-Fi network. To download a video, it is recommended that you insert an SD card (not supplied) into the tablet PC.

Technical specifications

Screen	7" LCD TFT screen
Screen resolution	800 x 480 pixels
Operating system	Google Android 4.0
Processor:	1 GHz
Memory	1 GB – SD card compatible to 32 GB
RAM	512 MB
Wi-Fi	Wi-Fi 802.11 b/g/n (integrated)
Audio	Built-in speaker
Connectivity	1 micro USB 2.0 port, 1 SD card slot, 1 audio input, 1 microphone input, 1 USB port/mouse input
Supported image formats	JPG/BMP/GIF
Supported music files	MP3
Battery	Lithium battery(supplied) - 2300 mAh, 3.7 V ===
Technical characteristics of the adapter	Power supply: 100 V - 240 V - 50 / 60 Hz 0.5 A Output: 5 V === 1.5 A
Battery life	3 hours (on average)
Dimensions	Approx 218 x 151 x 27 mm
Weight	690 g
Languages	English





Maintenance and warranty

To guard you against the risks of fire or electric shock, unplug the device from the AC current when cleaning it. Clean the exterior surface of your device with a dust cloth and maintain it like you would other furniture. Clean the outside of the device with a clean cloth dampened in clear warm water. Take care when you clean and dry the plastic parts. To clean the front panel, use a damp cloth and mild detergent.

This product is covered by our 3-month warranty.

To apply the warranty or to use the after-sales service, please contact the retailer with proof of purchase. Our warranty covers manufacturing or material defects excluding any damage resulting from not following the instruction manual or from negligent handling of the product (for example, dismantling it, exposing it to heat or moisture etc.). It is recommended that you keep the packaging for future reference.

As part of an ongoing continuous improvement process, we may need to change the colours and details of the product shown on the packaging.

Warning! These instructions should be kept as they contain important information for using all the functions of your tablet such as, depending on the model, activating certain product functions by code.

If you create a system or password for protecting access to your tablet, it is your responsibility to note it down accurately and keep it in a secure, accessible place that you will remember. If you forget it, our technicians will have to restore access to your tablet. This service is subject to a quote upon request and an invoice if you choose to accept the quote. Furthermore, in the event that the tablet is reset, the user risks losing all the data saved on the tablet.

You have a detailed set of instructions explaining all the functions of your tablet stored in its memory. We recommend that you read this for more information and to respond to your questions.

Reference : MFC140EN_09

Designed and developed in Europe -
Made in China Zhongshan

© 2012 LEXIBOOK®

Lexibook America
C/O NATIXIS Prames International
1251 Avenue of the Americas, 34th Fl.
New York, NY 10020
U.S.A.
Toll free number: +1-866-654-7008
E-mail: support@lexibook.com



This product is not a toy.



WARNING: Prolonged use of this product at maximum volume can damage hearing aids.

Protecting the environment

Used electrical appliances must be recycled and must not be disposed of among household waste. Actively support the preservation of resources and help protect the environment by taking this device to a collection centre (if available).



Code: MFC140EN_09QSG1432





FCC notice

This device complies with Part 15 of the FCC Rules. Operation is subject to the following two conditions: (1) This device may not cause harmful interference, and (2) This device must accept any interference received, including interference that may cause undesired operation.

Warning: Changes or modifications to this unit not expressly approved by the party responsible for compliance could void the user's authority to operate the equipment.

NOTE: This equipment has been tested and found to comply with the limits for a Class B digital device, pursuant to Part 15 of the FCC Rules. These limits are designed to provide reasonable protection against harmful interference in a residential installation. This equipment generates, uses and can radiate radio frequency energy and, if not installed and used in accordance with the instructions, may cause harmful interference to radio communications. However, there is no guarantee that interference will not occur in a particular installation. If this equipment does cause harmful interference to radio or television reception, which can be determined by turning the equipment off and on, the user is encouraged to try to correct the interference by one or more of the following measures:

- Reorient or relocate the receiving antenna.
- Increase the separation between the equipment and receiver.
- Connect the equipment to an outlet on a circuit different from that to which the receiver is connected.
- Consult the dealer or an experienced radio/TV technician for help.

Warning: Changes or modifications to this unit not expressly approved by the party responsible for compliance could void the user authority to operate the equipment.

