

# Bluetooth Keyboard LEXKING BT-7101

## User's Manual

Congratulations and thanks you choosing the Lexking BT-7101(400-SKB038) Bluetooth 3.0 with USB wired dual interface keyboard as your means of communication between Apple Smartphone(iPhone 3GS/4S/5), iPad series(iPad, iPad 2, New iPad), iPod touch or most of Android OS 3.0 or 4.0 later device and PC or Notebook. BT-7101(400-SKB038) is a very special design by dual interface and dual power mode offered, it is also a unique designed, manufactured by Lexking Technology Co., Ltd.

Before you starting use this device, please detail READ this user's manual:

### Contents:

- 1.Package and Encloses
- 2.OS compatible
- 3.Prodcut function description
- 4.Operating
- 5.Troubleshooting
6. Product Guarantee and Announcement
- 7.Radio frequency Warning

### Package and Encloses

- 1.BT-7101(400-SKB038) unit\*1
- 2.USB cable(1.5 Meters)\*1
- 3.Stand\*1(only can support iPhone and others Smartpone)-Optional
- 4.Alkaline battery\*2
- 5.User's manual\*1

### OS Compatible:

Under Bluetooth mode:

(by USB bus power or battery power offered)

- 1..iOS 4 / 5 / 6 in iPhone 3GS / 4 / 4S / 5, iPad, iPad2, New iPad, iPod Touch
- 2.Android OS : Compatible part of Android OS 2.3.5 later and all Android OS 3.0 and 4.0 later device
- 3.Mac OS X : Mac OS 10.6 later
- 4.Window OS : XP / Vita / 7 / 8

(Easily to link Notebook or external Bluetooth dongle embedded of Personal Computer)

Under USB Wired mode:

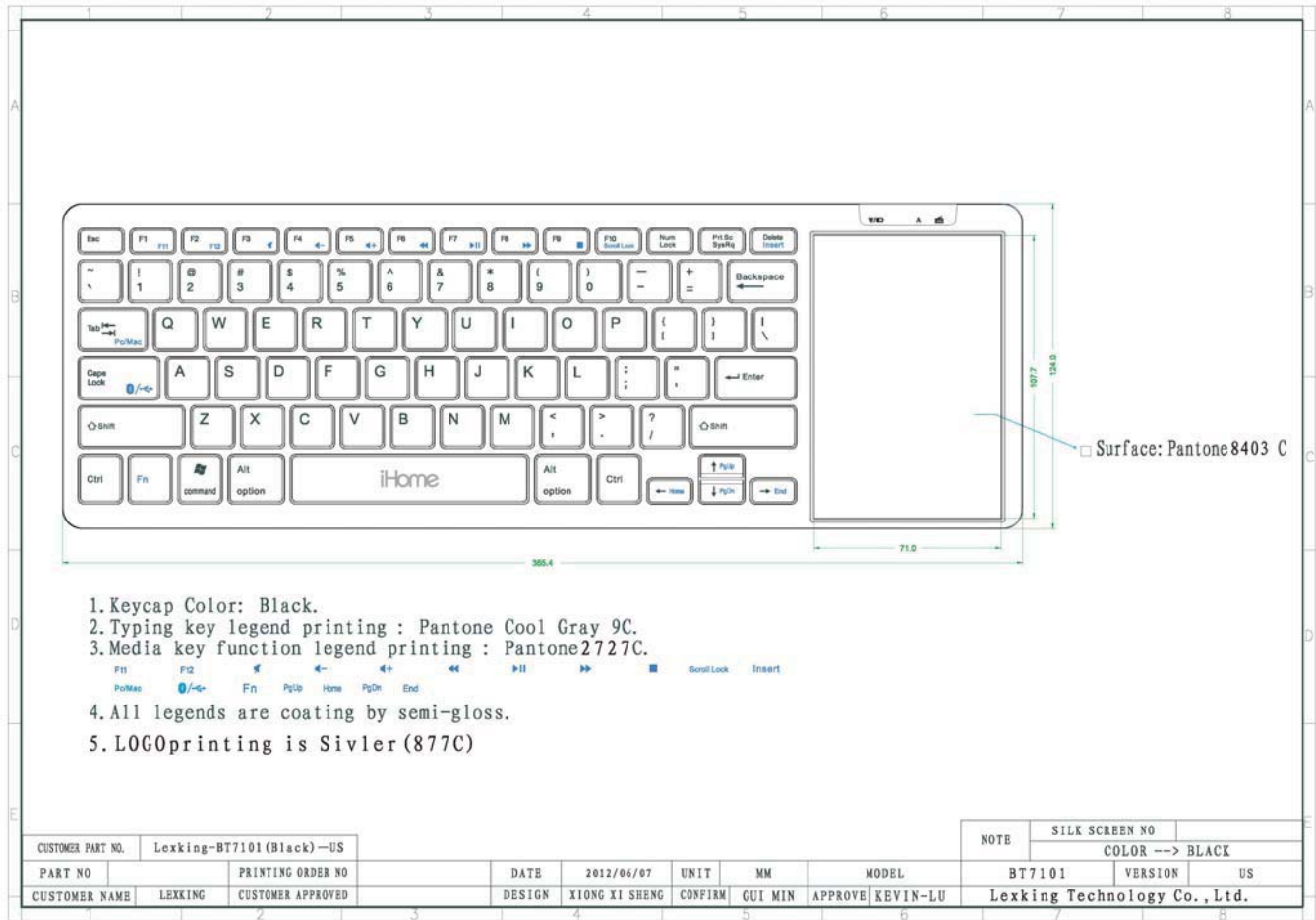
(by USB bus power offered)

- 1.Window OS: XP / Vista / 7 / 8

2. Mac OS X: 10.6 later

**Product profile and function descriptions**

US series:



**Function Key description**

**Fn**

Fn+CapsLock → Bluetooth and USB wired mode switching

(for switching key-in between USB mode or Bluetooth mode under USB bus power mode)

Fn+Tab → Pc/Mac mode switching

(for switch touchpad gesture function between PC and Mac OS under USB bus power or Battery power mode)

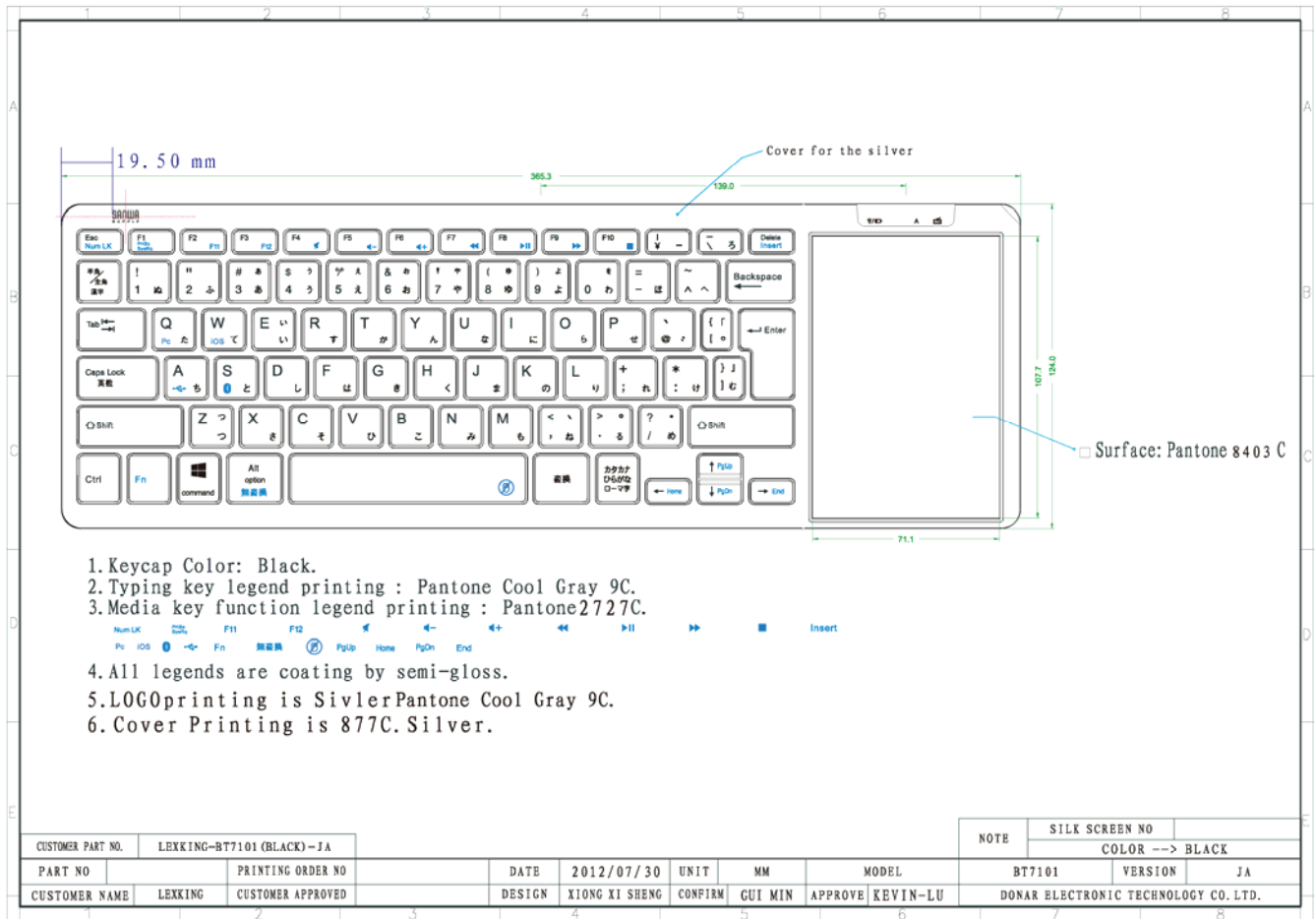
Fn+F1 → F11, Fn+F2 → F12, Fn+Up Arrow → PgUp, Fn+Down Arrow → PgDn, Fn+Left Arrow → Home, Fn+Right Arrow → End

Fn+F3 → Mute, Fn+F4 → Volume down, Fn+F5 → Volume up, Fn+F6 → Previous, Fn+F7 → Play/Pause, Fn+F8 → Next,

Fn+F9 → Stop, Fn+F10 → Scroll Lock, Fn+Del → Ins

## Product profile and function descriptions

### Japan series:



### Function Key description

**Fn+A** → Switch to USB wired mode

**Fn+S** → Switching to Bluetooth mode

(above function are switching key-in between USB mode or Bluetooth mode under USB bus power mode)

**Fn+Q** → Switching to Pc mode

**Fn+Q** → Switching to iOS mode

(above function are switching typing between PC and iOS mode under USB bus power or Battery power offered)

(iOS mode is support Roman spelling input under Japan iOS)

**Fn+Esc** → NumLk, **Fn+F1** → PrtSc SysRq, **Fn+F2** → F11, **Fn+F3** → F12, **Fn+F4** → Mute, **Fn+F5** → Volume down, **Fn+F6** →

Volume up, **Fn+F7** → Previous track, **Fn+F8** → Play/Pause, **Fn+F9** → Next track, **Fn+F10** → Stop, **Fn+Delete** → Insert

**Fn**, **Fn+Alt** → 無變換, **Fn+Spacebar** → Touchpad function disable, **Fn+Up Arrow** → PgUp, **Fn+Down Arrow** → PgDn, **Fn+Left**

Arrow → Home, **Fn+Right Arrow** → End

LED signal description(3 LEDs from left to right)

LED1→(Blue color)

Pairing and battery low indicator

The LED will blink during Bluetooth pairing with device first time when you press ID button.

Battery low status→When battery voltage low down t 2.2 VDC, the LED will blink when you type each keys till battery power all out.

LED2→(Blue color)

The LED light on when you press Caps Lock key, it represent upper case status.

LED3→(Blue color)

When it light on, it represent BT-7101(400-SKB038) is working at USB wired mode status, when it light off, it represent t Bluetooth mode status.

**Marks:**

When BT-7101(400-SKB038) is work at USB wired function under bus power mode, once you pull out USB cable from BT-7101(it meaning, you cut bus power), then you put USB cable into BT-7101(400-SKB038) again, it will become Bluetooth mode, if you want to keep use the USB wired function, please press “Fn+A” key again.

Slider Switch→(Located back side)

On/Off slider switch for Alkaline battery switching.

ID pairing switch→(Locate on back side)

Bluetooth pairing button

Micro USB Connector(in front side)

Micro USB connecter for connect PC or Notebook

## **Operating**

Before you starting use this keyboard, please detail READ below operating information;

### **A. Under USB bus power mode**

1. Take out BT-7101(400-SKB038) from package box
- 2.First step, Connect USB cable of enclose to BT-7101 and your PC(or Notebook)
- 3.PC or Notebook will auto recognize BT-7101(400-SKB038) then you can easy type-in letter via this keyboard.
- 4.If you want to link your iDevice(Ex. iPhone, iPad or Android OS devices), you can open your device Bluetooth searching mode, then press “Fn+B” key of BT-7101(400-SKB038), press the ID pairing button for link, BT-7101(400-SKB038) pairing LED1 will blink at the same time.

Your iDevice will shown “BT-7101 or 400-SKB038” string on device, you can choice this keyboard name, the Device will auto connect BT-7101(400-SKB038). When you finish above process, you will can enjoy the typing between PC(Notebook) or iDevice via “Fn+A” or “Fn+B”.

**Marks:**

Due to BT-7101(400-SKB038) have a smart design, if you forgot to turn off battery power, BT-7101(400-SKB038) is still can

work well under USB bus power mode, it is no compatible conflict.

## **B. Under Battery power mode**

### **(Just can use in Bluetooth interface)**

1. Open the battery cover then put the alkaline battery according right battery pole then close battery cover again.
2. Open the Bluetooth searching mode which you want to link iDevice( Ex. iPhone, iPad or Android OS device)
3. Turn on BT-7101(400-SKB038) battery switch into “on” status, then press ID pairing button, BT-7101(400-SKB038) pairing LED will blink at the same time.
4. Device screen will shown “BT-7101” or “400-SKB038” string, you can choice this keyboard name on device, then the Device will auto connect BT-7101(400-SKB038), you can typing via BT-7101(400-SKB038).

## **C. Bluetooth interface connect to Android or Mac OS 10.6 above connect**

Follow above item “A” or item “B” process of Bluetooth interface.

Then BT-7101(400-SKB038) could link Device in part of Android OS 2.3.5 later, all Android OS 3.0 later Tablet and Android OS 4.0 later Smartphone and Mac OS 10.6 late.

## **D. Bluetooth interface connect to Notebook or PC which embedded external Bluetooth dongle**

Ex. Connect Window 7 OS

Follow above item “A” or item “B” process of Bluetooth interface.

1. Open Control Panel
2. Select “Device and Printer”
3. Select “Add New Device, then you will find “BT-7101” or “400-SKB038”, select th is icon, the BT-7101(400-SKB038) will automatically connect with your Notebook or Personal Computer.

(Please note, may you have to key-in passwords for pairing process as shown on Notebook or Personal Computer due to the Notebook or PC embedded Bluetooth driver is old version)



4. You can use BT-7101(400-SKB038) when you connect device successfully.

**Marks:**

Above pairing procedures are same as Window OS Vista, XP.

## **E. Touchpad user guide**

Please see below BT-7101(400-SKB038) touchpad gesture guide detail.

<b>One-Finger Gesture</b>	<b>Action Description</b>	<b>Function</b>	<b>PC Mode</b>	<b>Note</b>
Tap (up & down once) 	Tap touchpad with one finger once	once Mouse left-click	V	
Double tap (up & down twice) 	1. Tap touchpad with one finger once 2. Tap touchpad again	Mouse double left-click (like Enter function)	V	

<p>Select (touch &amp; move over selected object, then release)</p> 	<p>1.Move cursor at the starting point of the text/object to be selected with one finger 2.Tap touchpad with one finger 3.Press &amp; hold on touchpad 4.Drag finger to move over the desired text/object selection 5.Release finger from touchpad</p>	<p>Mouse Select</p>	<p>V</p>	
<p>Mouse Right-Button (2 fingers close tap touchpad then release)</p> 	<p>Press and hold 2 fingers onto touchpad together then release fingers, it is mouse right-button function</p>	<p>Mouse Right-button function</p>	<p>V</p>	
<p>Scrolling (2 fingers close tap touchpad then vertically scrolling)</p> 	<p>Press and hold 2 fingers onto touchpad(don't release fingers), move finger up and down vertically to scrolling</p>	<p>Mouse Scrolling function</p>	<p>V</p>	
<p>Previous page/Next Page (2 fingers close tap touchpad then horizontally slide)</p> 	<p>Press and hold 2 fingers onto touchpad(don't release fingers) then flick to left side or right side. <b>Pc(Window) mode:</b> Slide to left side(Previous page) Slide to right side(Next page) <b>Mac mode:</b> Slide to left side(Next page) Slide to right side(Previous page)</p>	<p>Previous/Next Page</p>	<p>V</p>	
<p>Zoom in / Zoom out (3 fingers close tap touchpad then vertically scrolling)</p> 	<p>Press and hold 3 fingers onto touchpad(don't release fingers), move finger up and down vertically to zoom in and zoom out</p>	<p>Object Zoom in / Zoom out</p>	<p>V</p>	
<p>Open Homepage/Email (3 fingers close tap touchpad then Horizontally slide)</p> 	<p>Press and hold 3 fingers onto touchpad(don't release fingers) then slide to left side(for Open Homepage default browser) , or then slide to right side(for Open default Email)</p>	<p>Open Homepage/Mail</p>	<p>V</p>	

## **Troubleshooting**

### **Q1 : You can't pairing BT-7101(400-SKB038)**

1 .Under USB bus power mode:

Please make sure you have full put in USB cable between BT-7101(400-SKB038) and PC(Notebook), you also can check LED3 if it light on, if so, you can try to press ID button for pairing again.

2.Under Alkaline battery mode:

Please make sure if BT-7101(400-SKB038) battery have enough voltage, if so, you can try to open power switch again then press ID button for pairing again.

3.Some PC external Bluetooth dongle driver or Notebook embedded Bluetooth driver have old Toshiba Bluetooth driver version inside, may it have not good communication with BT-7101(400-SKB038), you can try to surf Toshiba Bluetooth driver upgrade website for download then upgrade you notebook or PC Bluetooth driver.

(<http://aps2.toshiba-tro.de/bluetooth/index.php?page=download-toshiba>)

### **Q2 : BT-7101 connect with iDevice successfully but it is still not working under Bluetooth mode**

1.Please make sure if BT-7101(400-SKB038) USB wired function working OK?

If USB wired and Bluetooth function of bus power mode can be work well, it mean, Bluetooth mode also can be work well except alkaline battery power low status.

2.We don't suggest BT-7101(400-SKB038) work on metal surface, due to metal thus environment will influence RF performance, if so, please move out metal surface for operate.

### **Q3 : How to change input methods of language when you typing**

3.1 Under iOS(iPad, iPhone), you can press windows key(command key)then press Spacebar at the same time for switching different language input method.

3.2 Under Android OS, you can **try to** press shift key then press spacebar key for switching different input method.

3.3 Under Window 7/Vista/XP OS, you can press Ctrl+Spacebar for switching input method.

Under Window 8, you can press Window key+Spacebar for switching input method.

**Marks:**

**Due to Android OS is belong to open system, may some Smartphone or Table can't use "Shift+Spacebar" to switch this function)**

.If you still can smoothly troubleshooting the problem, please reach Lexking customer service people as below information or return BT-7101(400-SKB038) back to where you purchased shop with keep original package.

[services@lexking.com](mailto:services@lexking.com)

[www.lexking.com](http://www.lexking.com)

## **Product Guarantee and Announcement**

1.1 year guarantee during normal used.

## 2. Abnormal use are not including guarantee.

---

This equipment has been tested and found to comply with the limits for a Class B digital device, pursuant to part 15 of the FCC rules. These limits are designed to provide reasonable protection against harmful interference in a residential installation.

This equipment generates, uses and can radiate radio frequency energy and, if not installed and used in accordance with the instructions, may cause harmful interference to radio communications. However, there is no guarantee that interference will not occur in a particular installation. If this equipment does cause harmful interference to radio or television reception, which can be determined by turning the equipment off and on, the user is encouraged to try to correct the interference by one or more of the following measures:

- Reorient or relocate the receiving antenna.
- Increase the separation between the equipment and receiver.
- Connect the equipment into an outlet on a circuit different from that to which the receiver is connected.
- Consult the dealer or an experienced radio/TV technician for help. You are cautioned that changes or modifications not expressly approved by the party responsible for compliance could void your authority to operate the equipment.

This device complies with Part 15 of the FCC Rules. Operation is subject to the following two conditions:

- (1) this device may not cause harmful interference and
- (2) this device must accept any interference received, including interference that may cause undesired operation