

OEM module Integration Instructions

Rev. Date: 21 Sept 2016

Pg 1

Integration into PN:
40C0745 or 40C0747

Name: 550 Tray ASM RFID

Lxk contact: Ward Inabinet (859-227-4670)

The Lexmark UHF RFID Module is designed for OEM Installation only into Lexmark compatible tray options only. The module transmits in the frequency range of 902 - 928 MHz and is designed to function in the RF Exposure Category General Population/Uncontrolled Environment. Thus the installer should ensure that exposure by personnel while testing and operation of this module should maintain a distance of 20CM from the antenna.

This device complies with part 15 of the FCC Rules and Industry Canada license – exempt RSS Standards. Operation is subject to the following two conditions:

- (1) This device may not cause harmful interference, and
- (2) This device must accept any interference received, including interference that may cause undesired operation of the device.

A minimum separation distance of 20 CM must be maintained between the antenna and the person for this appliance to satisfy the RF exposure requirements.

Le présent appareil est conforme aux CNR d'Industrie Canada applicables aux appareils radio exempts de licence. L'exploitation est autorisée aux deux conditions suivantes:

- (1) l'appareil ne doit pas produire de brouillage, et*
- (2) l'utilisateur de l'appareil doit accepter tout brouillage radioélectrique subi, même si le brouillage est susceptible d'en compromettre le fonctionnement.*

Cet équipement doit être installé et utilisé avec un minimum de 20 cm de distance entre la source de rayonnement et votre corps.

Caution: Any changes or modifications to the equipment not expressly approved by the party responsible for compliance could void the User's authority to operate the equipment.

The module and its antenna must not be co-located or operated in conjunction with any other antenna or transmitter.

OEM Module Assembly and integration instructions follow:

ASSEMBLY INSTRUCTIONS

Rev. Date: 15 Sept 2016

Pg 2

PN: 40C0745 or
40C0747

Name: 550 Tray ASM RFID

Lxk contact: Ward Inabinet (859-227-4670)

ID	PN & Description	Qty
A	40C2100-Option ASM	1
B		
C		
D		
E		
F		

1. Receive packaged Option. Open Box.



2. Remove foam packing sides and bag. Store for later reuse. Option on flat, clean surface.



Tool / Fixture ID	Description
F1	
T1	Box cutter

ASSEMBLY INSTRUCTIONS

Rev. Date: 15 Sept 2016

Pg 3

PN: 40C0745 or
40C0747

Name: 550 Tray ASM RFID (NA or EU)

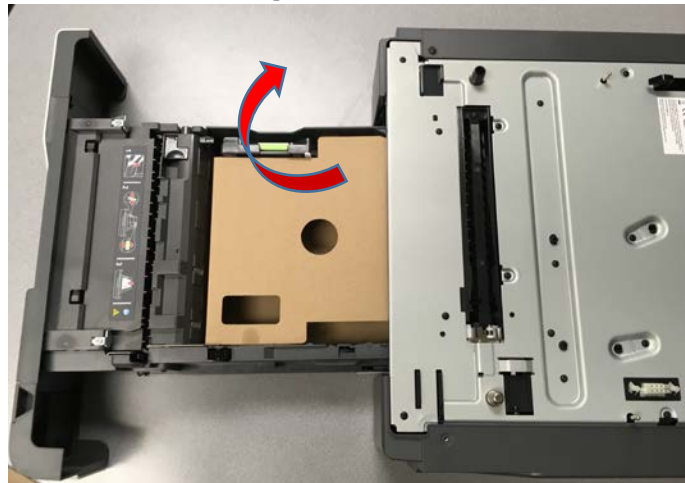
Lxk contact: Ward Inabinet (859-227-4670)

ID	PN & Description	Qty
A	3087791 or 3087808	1
B		
C		
D		
E		
F		

1. CS72x Option and RFID Module (A) shown.



2. Open Option Tray and remove corrugated insert. Discard insert.



Tool / Fixture ID	Description
F1	
T1	

ASSEMBLY INSTRUCTIONS

Rev. Date: 15 Sept 2016

Pg 4

PN: 40C0745 or
40C0747

Name: 550 Tray ASM RFID (NA or EU)

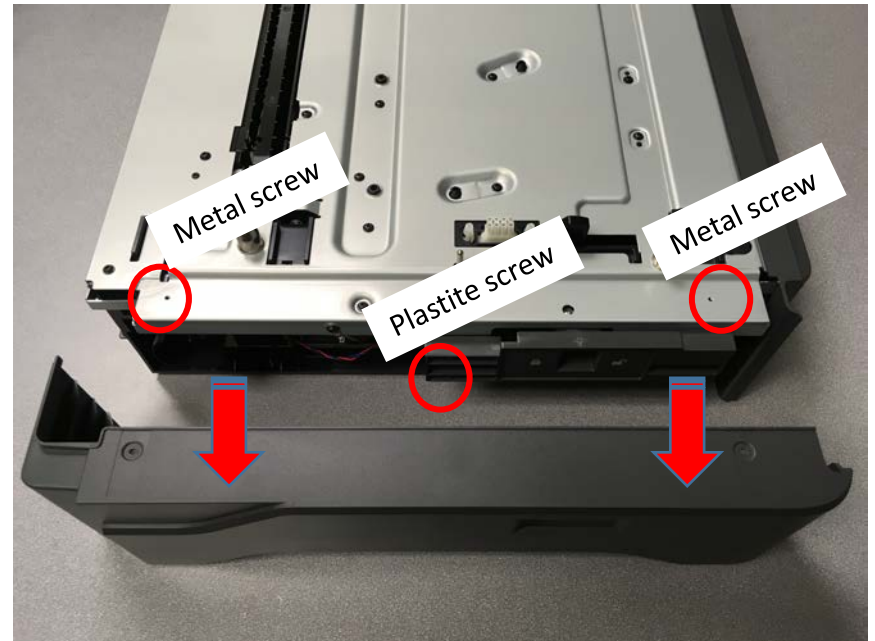
Lxk contact: Ward Inabinet (859-227-4670)

ID	PN & Description	Qty
A	Metal screw	2
B	Plastite Screw	1
C		
D		
E		
F		

1. Remove Tray completely from Option. Place Tray aside.



2. Unfasten screws and remove Right Cover. Store cover and screws for later re-assembly.



Tool / Fixture ID	Description
F1	
T1	Power Driver

ASSEMBLY INSTRUCTIONS

Rev. Date: 15 Sept 2016

Pg 5

PN: 40C0745 or
40C0747

Name: 550 Tray ASM RFID (NA or EU)

Lxk contact: Ward Inabinet (859-227-4670)

ID	PN & Description	Qty
A		
B		
C		
D		
E		
F		

1. Note Option PCBA and cables on right side.



2. Carefully disconnect indicated cable. Note: significant force is required.



Tool / Fixture ID	Description
F1	
T1	

ASSEMBLY INSTRUCTIONS

Rev. Date: 15 Sept 2016

Pg 6

PN: 40C0745 or
40C0747

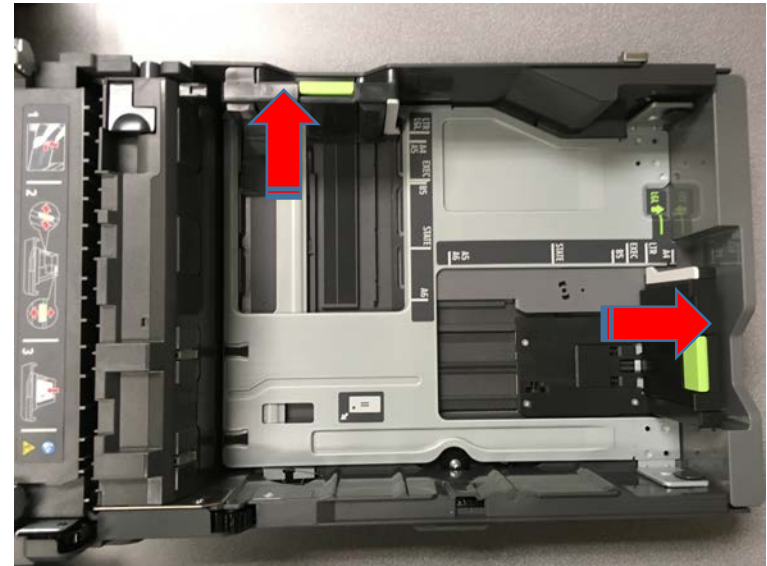
Name: 550 Tray ASM RFID (NA or EU)

Lxk contact: Ward Inabinet (859-227-4670)

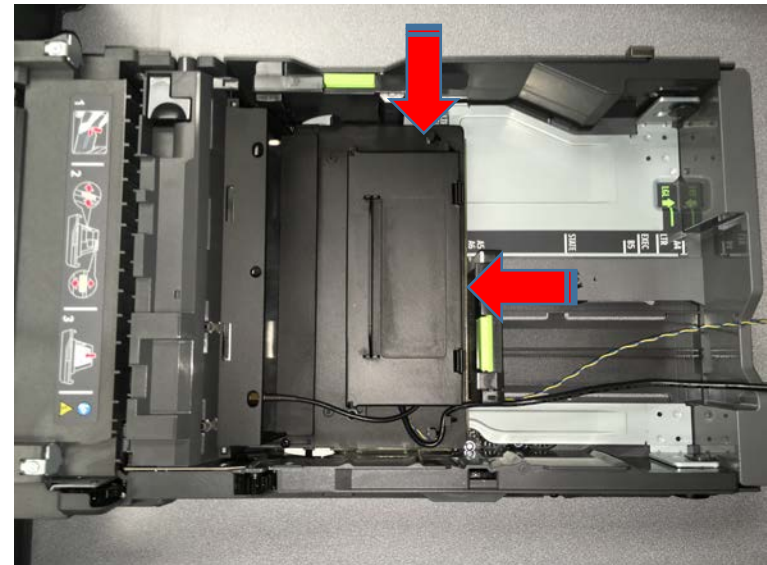
ID	PN & Description	Qty
A		
B		
C		
D		
E		
F		

Tool / Fixture ID	Description
F1	
T1	

1. Access Option Tray.
Slide paper restraints fully to left and rear sides.



2. Slide RFID module into Tray. Gently push RFID module down until fully seated.
Slide side and rear restraint fully against RFID module.



ASSEMBLY INSTRUCTIONS

Rev. Date: 15 Sept 2016

Pg 7

PN: 40C0745 or
40C0747

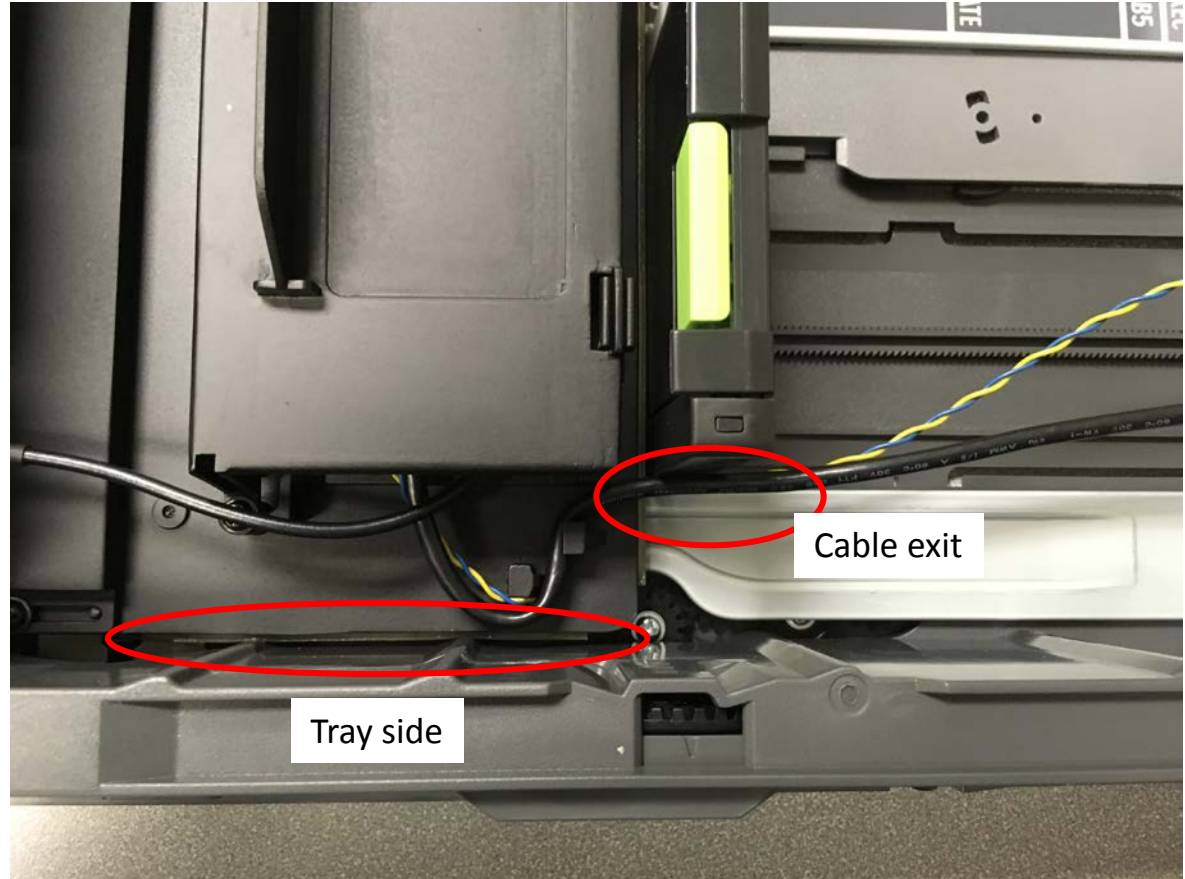
Name: 550 Tray ASM RFID (NA or EU)

Lxk contact: Ward Inabinet (859-227-4670)

ID	PN & Description	Qty
A		
B		
C		
D		
E		
F		

Tool / Fixture ID	Description
F1	
T1	

1.



Note the cables exiting the RFID module flow out to the rear of the Tray.
Note that the “Bumpers” of the RFID module engage the Tray side and Tray restraints.

ASSEMBLY INSTRUCTIONS

Rev. Date: 15 Sept 2016

Pg 8

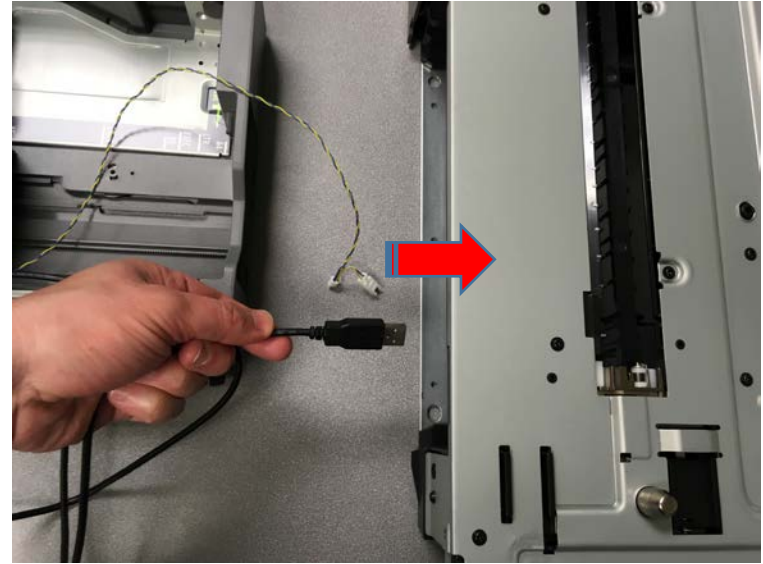
PN: 40C0745 or
40C0747

Name: 550 Tray ASM RFID (NA or EU)

Lxk contact: Ward Inabinet (859-227-4670)

ID	PN & Description	Qty
A		
B		
C		
D		
E		
F		

- Free ends of cables from Module are placed into Option.



- USB cable exits through the rear of Option. Rear cover can slide out for USB cable exit.



Tool / Fixture ID	Description
F1	
T1	

ASSEMBLY INSTRUCTIONS

Rev. Date: 15 Sept 2016

Pg 9

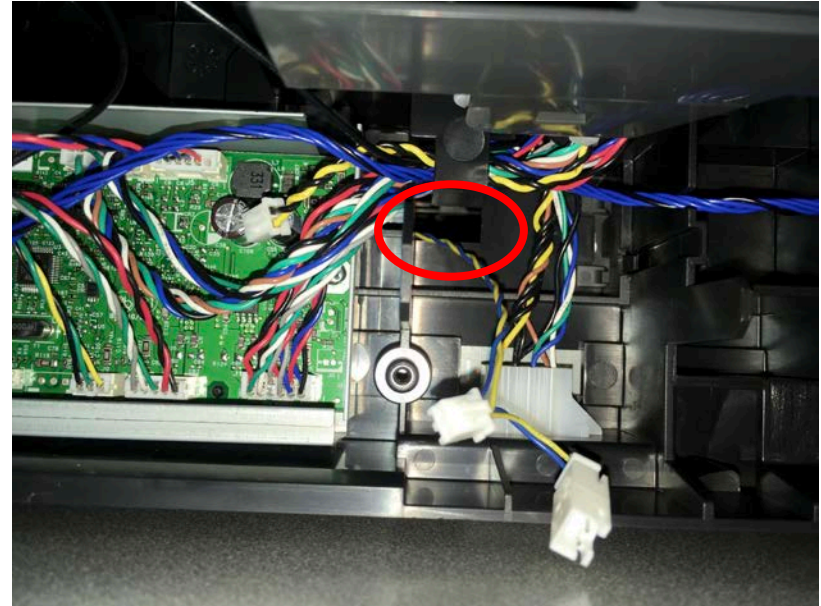
PN: 40C0745 or
40C0747

Name: 550 Tray ASM RFID (NA or EU)

Lxk contact: Ward Inabinet (859-227-4670)

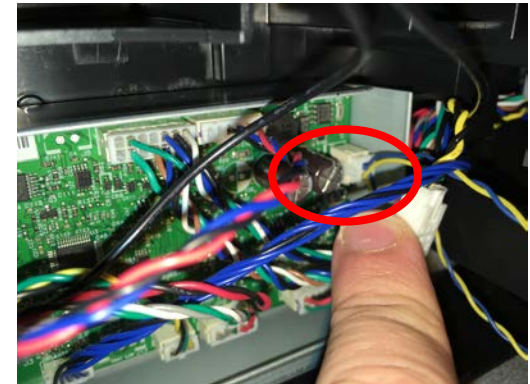
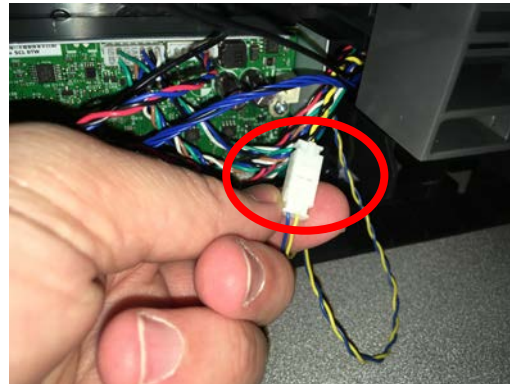
ID	PN & Description	Qty
A		
B		
C		
D		
E		
F		

1. Module power cable is routed through Option frame hole adjacent to Option PCBA.



2. Connect Option Cable that was disconnected from PCBA into module connector. Connect free module cable into PCBA connector.

Tool / Fixture ID	Description
F1	
T1	



ASSEMBLY INSTRUCTIONS

Rev. Date: 15 Sept 2016

Pg 10

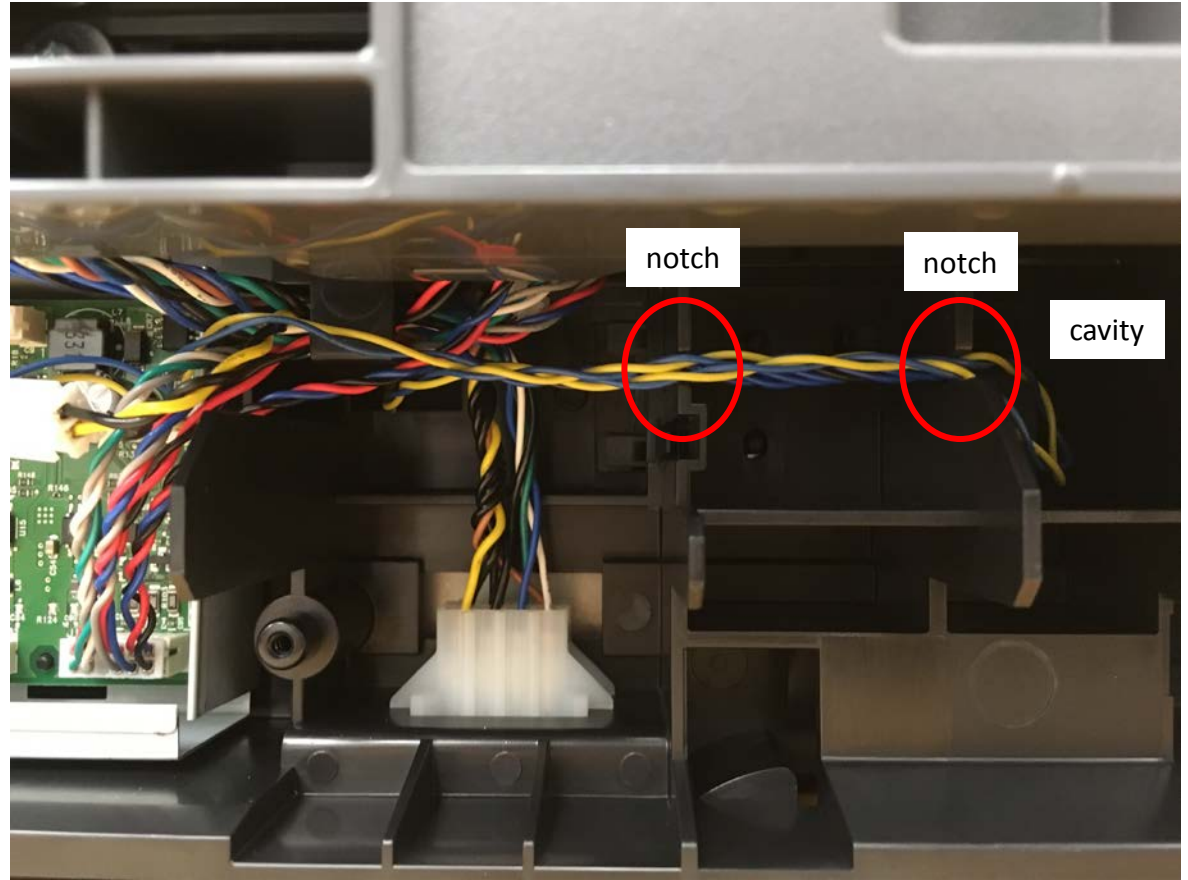
PN: 40C0745 or
40C0747

Name: 550 Tray ASM RFID (NA or EU)

Lxk contact: Ward Inabinet (859-227-4670)

ID	PN & Description	Qty
A		
B		
C		
D		
E		
F		

Tool / Fixture ID	Description
F1	
T1	



1. Route excess cable length through notches in Option frame. Place excess cable into indicated cavity.

ASSEMBLY INSTRUCTIONS

Rev. Date: 15 Sept 2016

Pg 11

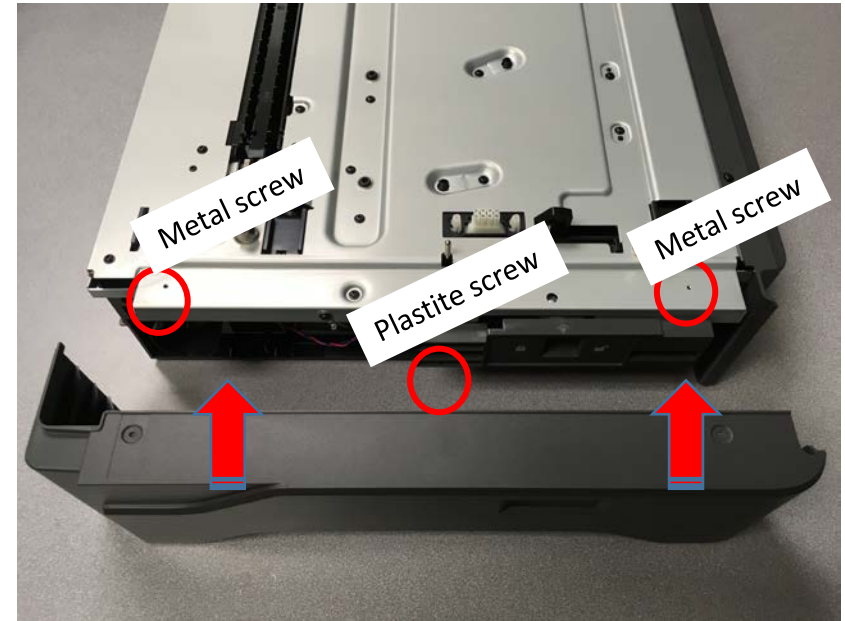
PN: 40C0745 or
40C0747

Name: 550 Tray ASM RFID (NA or EU)

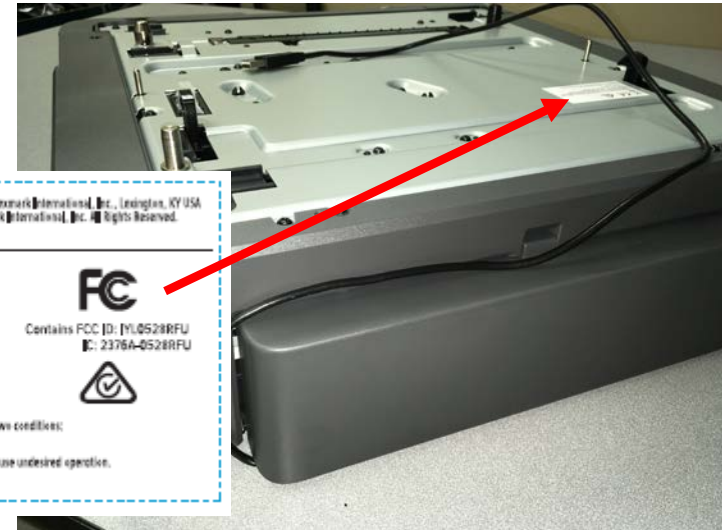
Lxk contact: Ward Inabinet (859-227-4670)

ID	PN & Description	Qty
A	Metal screw	2
B	Plastite Screw	1
C	3088231 label	1
D		
E		
F		


1. Re-install Option Right Cover.



- Note USB cable exit path.
- Apply 3088231 label





Tool / Fixture ID	Description
F1	
T1	



Manufactured for Lexmark International, Inc., Lexington, KY USA
Programs © Lexmark International, Inc. All Rights Reserved.

Machine Type: 0528-RFU
PN: 40C0745


 Contains FCC ID: YL0528RFU
 IC: 2376A-0528RFU



This device complies with Part 15 of the FCC Rules. Operation is subject to the following two conditions:
 (1) This device may not cause harmful interference, and
 (2) This device must accept any interference received, including interference that may cause undesired operation.
 Assembled in the US of US and non-US components.

ASSEMBLY INSTRUCTIONS

Rev. Date: 15 Sept 2016

Pg 12

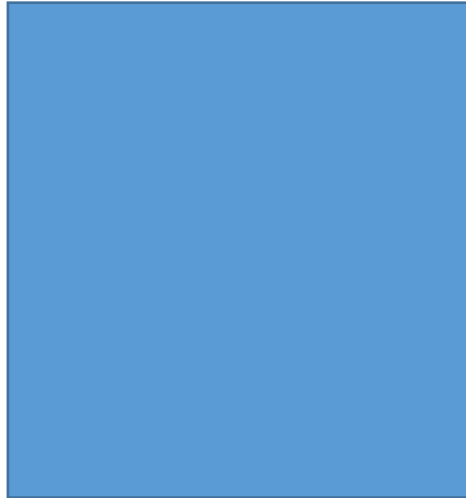
PN: 40C0745 or
40C0747

Name: 550 Tray ASM RFID (NA or EU)

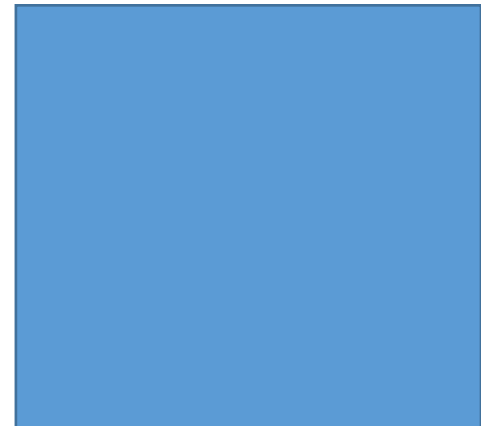
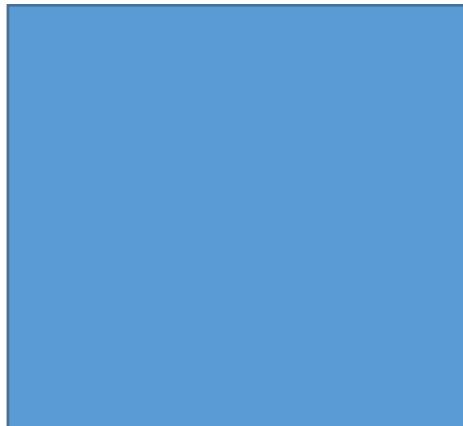
Lxk contact: Ward Inabinet (859-227-4670)

ID	PN & Description	Qty
A		
B		
C		
D		
E		
F		

1. Perform a “Soft Power off” to the CS725 Test Printer. Place completed RFID Option over a Standard Option and under a CS725 printer. (Function Test set-up).



2. While pressing the “3” and “6”, perform a “Soft Power On” to the CS725 Test Printer. The printer will power on in the “Diagnostic Mode”. Scroll down and select “RFID Test”.



Tool / Fixture ID	Description
F1	
T1	

ASSEMBLY INSTRUCTIONS

Rev. Date: 15 Sept 2016

Pg 13

PN: 40C0745 or
40C0747

Name: 550 Tray ASM RFID (NA or EU)

Lxk contact: Ward Inabinet (859-227-4670)

ID	PN & Description	Qty
A		
B		
C		
D		
E		
F		

Tool / Fixture ID	Description
F1	
T1	

1. Load about 20 pages of RFID media into the Standard Option.
2. While pressing the “3” and “6”, perform a “Soft Power On” to the CS725 Test Printer. The printer will power on in the “Diagnostic Mode”. Scroll down and select “RFID Test”.
3. Select “Test Page 1”. Test page one will print out. Following the instructions on this sheet, place this ”Test Page 1” back into the Standard Option printed side up with the arrow pointing toward the front of the printer. If this test page prints out, then this part of the Function Test is successful.
4. Select “Test Page 2”. Test page two will print out (this sheet is the same actual sheet as Test page one. Follow the instructions on this sheet, load one page of normal, non-RFID media into the Standard Option. If this test page prints out, then this part of the Function Test is successful.
5. Select “Test page 3”. Test page three will print out. This page should duplex and print a “Invalid Tag” on the back side. Note the Instructions on the front side of the Test page three. If “Invalid Tag” is on the back side, then the full Function Test is successful.
6. Perform a “Soft Power off” to the printer. Remove the RFID Option from the test set-up.

ASSEMBLY INSTRUCTIONS

Rev. Date: 15 Sept 2016

Pg 14

PN: 40C0745 or
40C0747

Name: 550 Tray ASM RFID (NA or EU)

Lxk contact: Ward Inabinet (859-227-4670)

ID	PN & Description	Qty
A	3088223-RFID Option Sheet	1
B	3088232-RFID Carton Label	2
C	40C9200-Forms Card	1
D		
E		
F		

1. Repackage Option.



2. Place Set-Up sheet (A) and Forms Card (C) into Option Packaging. Tape Carton. Print out the RFID Option Carton label (B) and affix over the original Carton label.

Tool / Fixture ID	Description
F1	
T1	

