



LEXMARK X912e

LEXMARK X912e

Technical Specifications

PRINTER
 Print speed: 29 ppm A4 mono and colour.
 Time to first page (mono/colour): < 15 secs
 Technology: A3 Colour tandem LED
 Processor: 600 MHz
 Print quality: 2400 Image Quality, automatic colour correction
 Compatibility: PostScript 3 Emulation, PCL6 Emulation
 Connectivity: Standard - 10/100BaseTX Ethernet, USB and one internal solutions port. Optional Token-Ring
 Font selection: 83 PCL 6 scalable fonts and 2 PCL5 bitmapped fonts
 156 PostScript scalable fonts

DIGITAL COPIER
 Copy Select: copy once, print many, 1-999 copies
 Electronic collation: yes
 Reduce / enlarge: 25-400%
 Paper Saver: 2-up or 4-up
 Date / time stamp: Adds date and time to the top of each page
 Message overlay: Adds watermark to each page

DIGITAL FAX
 Modem Speed: 33.6 kbps
 Receive fax, receive to memory
 Send hardcopy fax, flatbed or ADF
 Send softcopy fax, via the PS3 driver
 Send fax to server, memory send, group fax
 Address book: search LDAP &/or internal directory for names & fax numbers
 Shortcut keys: up to 245 shortcuts
 Selectable quality modes: standard, fine, superfine, ultra fine
 Retry, transmission & receive log

DIGITAL SCANNER
 Scanner type: Single pass-duplex C-path colour ADF
 Scanning speed simplex: 34 / 19 ppm mono / colour
 Scanning speed duplex: 68 / 36 ppm mono / colour
 Maximum Optical Resolution: 600 x 600 dpi
 Document feeding mode: flatbed & ADF built-in
 ADF capacity: 50-sheets
 Original document size: ADF minimum: 140 x 140 mm
 ADF maximum: 297 x 432 mm
 Flatbed maximum: 297 x 432 mm
 Paper weight: up to 120 gsm
 Scan destinations: FTP server, email, workstation
 Customer scan profiles
 Scan formats: JPEG, TIFF, PDF, PS2
 Shortcut keys: up to 245 shortcuts
 Bundled software: ScanSoft PaperPort 8.0 Deluxe & OmniPage Pro

GENERAL
 Memory
 Standard: 256 MB
 Maximum: 512 MB
 Optional 4, 8, 16 MB flash DIMM or 20+ GB hard drive

Paper Handling
 Input: 1,750-sheets (3 x 550-sheet drawer + 100-sheet multi-purpose tray)
 Output: 650-sheets

Supported Media
 Media type: Paper, cardstock (up to 180 gsm), labels, gloss, transparencies, envelopes
 Paper Size: A4, A3, A5, Letter, Legal and Banner (up to 304 x 914 mm)

Network Management Software
 MarkVision printing and network printer management software

Electronic Forms Support
 Optional Lexmark Forms 4, 8, 16 MB flash DIMM or 5+ GB hard disk

Supplies
 Ships with 8,000 pages* set of CMYK print cartridges
 14,000 pages* CMYK High-Yield print cartridges available
 28,000 K & CMY Photo-conductors
 Transparencies
 A4 Glossy Paper
 *estimated cartridge yield based on 5% area coverage of an A4 page

Cost saving and environmental features
 Energy Star Compliant
 Toner Saver mode
 Power Saver mode
 Multi-up printing
 Two-sided printing
 MarkVision Professional alert driven printer management

Special features
 Automatic colour screening selection to optimise print quality based on page content.

Colour Management Systems
 Pantone, US CMYK, Europe CMYK

Size (H x W x D / weight)
 X912e: 1234 x 680 x 960 mm / 175.8 kg

Acoustics
 57 dBA Copying
 47 dBA Idle (Standby)

Power and electrical specifications
 Average maximum power consumption
 Watts copying: 860W
 Watts standby: 88W
 220-240V at 47-63 Hz

Duty cycle
 Up to 100,000 pages per month maximum
 Up to 10,000 scans per month

Warranty
 2-year next-day onsite warranty
 Extended warranty and upgrades to 4 hour service response times available

Part Numbers
 10D0955 Lexmark X912e Colour MFP (Aust)
 10D0984 Lexmark X912e Colour MFP (NZ)

A powerful, colour MFP that can be customised to your office.



Industry leading service and support.
 The Lexmark X912e is supported by Lexmark's comprehensive 2 year on-site warranty. In addition to the standard on-site support, you can choose from a wide range of flexible service options, including an extended warranty of up to 5 years and usage-based service contracts built specifically around your business needs.

print>move>manage
 Supported by Lexmark award winning technology, innovative business applications and strong strategic service offerings, Lexmark and its key partners can assist your organisation to print smarter, move critical information faster and manage your output related costs more efficiently. This value proposition, Print-Move-Manage, translates into a set of industry-specific solutions and expertise allowing you to improve, maintain and manage your document and printing infrastructure.

Print A full range of advanced printing solutions based on industry leading technology and associated product services that provide leading edge functions at a very competitive cost. These include printers, multifunction devices as well as network and application-specific hardware and software solutions.

Move Consulting and implementation services designed to increase productivity while reducing the costs related to your paper-intensive processes through device consolidation, distributed document capture, distributed printing, electronic form integration and paper document workflow automation.

Manage A range of services offerings designed for today's business. Starting from the traditional leasing of equipment through per page based billing up to full contract management and outsourcing of your output device fleets. These offers are designed to deliver you the most cost effective solution for output and document management.

- > A3 Colour MFP
- > Standard print, copy, fax, scan, email
- > 29 ppm colour and mono print & copy
- > Standard duplex printing & scanning
- > Easy to use colour touch screen interface
- > Network ready
- > 2 Year On-Site Warranty



www.lexmark.com/ap

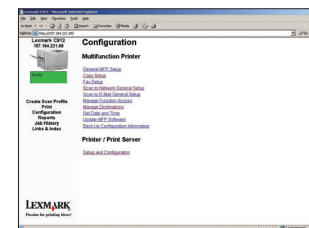


Specifications are subject to change without notice. Lexmark and Lexmark with diamond design are trademarks of Lexmark International, Inc., registered in the United States and/or other countries. AccuFeed is a trademark and LexExpress is a service mark of Lexmark International, Inc. Operating speeds may vary according to document complexity, software application & system configuration. All other trademarks are the properties of their respective owners. EC: 10D0235 Part No.: 80B4297

print>move>manage



Leading the way in digital document management



Greater control from your desktop.

With the easy-to-use web browser staff can conveniently interact with the X912e from their desktop - setting up scan profiles, fax speed dials, determining device status and changing simple machine settings.

LEXMARK X912e

Lexmark lets you work smarter.

The X912e gives you the ability to integrate a range of optional Lexmark solutions offering you more efficient ways to work.

The X912e allows solutions to be customised to individual workgroups within your company, depending on their specific needs. For example:

- The Lexmark Bar Code Card supports the generation and printing of more than 47 industry standard barcodes
- The Lexmark ImageQuick Card supports drag 'n' drop printing of pdf documents without opening Acrobat and the ability to print directly from web pages.

• Lexmark Document Distributor is designed to automate manual processes to integrate and streamline paper and digital document workflow. This software, coupled with the X912e reduces duplication of effort and can dramatically reduce the time needed to disseminate documents by fax, e-mail, to archive or to print.

• Lexmark Document Producer allows you to create and hold forms on your network as digital files - saving all your staff time, eliminating the expense of pre-printed forms and making it easy to change or update information in just seconds.

The current digital revolution has seen an explosion in the amount of information transferred between businesses - both across town and across the world. And this trend is set to continue. As a result, business productivity today is directly linked to how efficiently you are able to move documents throughout your company.

Lexmark understands that the key to success is creating a fast, reliable and simple transition between hardcopy and electronic documents. Plus the changing nature of the document courtesy of innovations such as the internet, has meant that colour is now heavily used in documents which were once only black and white. So to take full advantage of the benefits of colour and electronic technology, businesses have had to find new ways to print, move and manage their documents.

Lexmark's ability to optimise the value of documents in both hardcopy and electronic formats allows for them to be quickly shared and delivered to people in the format which they need. The result is a significant increase in the pace, productivity and professionalism of your business.

The no compromise, high-performance MFP.

By combining print, copy, scan, fax and email functionality in full colour, the new Lexmark X912e has been engineered to single-handedly manage and distribute information both internally and externally without compromising on features, quality or reliability.

The X912e is the most powerful colour MFP in the Lexmark range and the only device on the market that allows you to print banner-size documents (up to 304mm x 914mm). Versatile, flexible and scalable - the X912e boasts a host of advanced features that can be added as your business grows. The result is an affordable, fully customised solution that will increase office productivity.



Harness today's essential business tool - colour, more affordably than ever.

Today colour has brought new life and value to almost every business document, And the Lexmark X912e lets you take advantage of this trend, by giving you access to quality, high-speed A3 colour for improved business communication.

Statistics prove that colour enhances your company's professional image and adds value to all your business documents.

- Colour raises the perception of quality
- Sells products and services up to 85% better
- Increases reader motivation by up to 80%
- Presentations and printed pages are understood 60% better when in colour
- Colour increases retention time in more than 60% of cases
- Visual retrieval time is reduced by 80% when there is colour
- Brand identification increases by 70% when you use colour
- Ads attract 52% more readers if they are in colour
- Readers pay attention for 50% longer when they are in colour

Source: Jan White "Color for Impact"

The X912e is a high quality, 2400IQ high performance solution for the most demanding workgroup or business. Benefit from in-house, colour laser printing at 29ppm - thanks to the powerful 600MHz processor - with the convenience of auto colour correction and 600 x 600dpi A3 colour scanning. Ideal for colour printing and copying presentations, images, reports, handouts, web pages, spreadsheets, retail posters, banner-size signage, mapping and proofing.

In addition, Lexmark have focussed on helping you manage your printing costs more effectively through mono and colour draft mode options, mono only print drivers, duplex printing and n-up printing. All of which, add up to a lower cost per page.

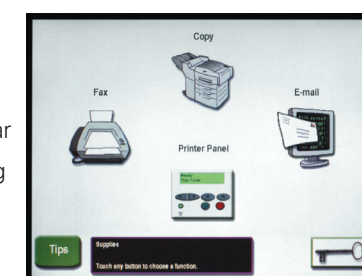
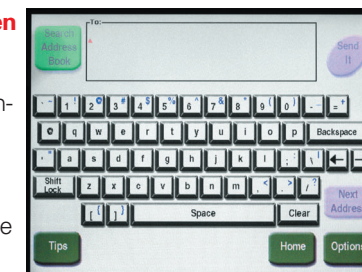
Setting new standards in productivity via digital document management.

With the Lexmark X912e everyone in your office can benefit from improved business processes. The work flows much faster when you can:

- print and copy in full colour at 29ppm
- scan both sides of a document at the same time through the X912e automatic document feeder (even in colour!)
- set up unique profiles that allow users to scan to any network location or email address at the touch of a button
- send faxes directly from your workstation
- simplify business processes with documents on demand, electronic forms and scan to email solutions

Intuitive, colour touch screen makes the job much easier.

The easy-to-use, colour touch-screen features a QWERTY keyboard, graphic icons, help menu and an intuitive interface which allows you to quickly access and manage all print, copy, fax and scan functions. The screen can even be customised to suit a particular workgroup's needs, providing easy access to common functions, customising standard functions and integrating 3rd party and Lexmark solutions such as Lexmark Document Solutions.



The Lexmark X912e is the only MFP that supports banner printing up to 914 mm wide.