

6 Add The Siren Detector To The InGrid System

Once the Siren Detector has been mounted it must then be "added" to the InGrid System. You will need a Handset (or Console) to add the Siren Detector.

1. On the Handset (or Console), Press MENU.
2. Scroll to Security Setup, press SELECT and enter the Master Code
3. Scroll to Sensors, press SELECT.
4. Scroll to <Add New>, press SELECT.
5. Scroll to Siren Detector, press SELECT.

6. Following the instructions displayed on the Handset (or Console)... wait 5 seconds, then press the button on the Siren Detector.

Note: Once the Siren Detector is "found", the InGrid system will require you to perform an audio test to determine if the siren from the target hazard detector can be detected by the Siren Detector.

7. Following the instructions displayed on the Handset (or Console)... press the "test" button on the hazard detector until Handset (or Console) displays "Siren Detector Added", which indicates that the test has passed.

If the test does not pass within 10 to 12 seconds of the siren sounding, the Hazard Detector may not meet the requirements described earlier and may need to be replaced. If the test fails, the InGrid system will not permit the Siren Detector to be added.

Note: When the Siren Detector has successfully been added, you will hear 4 fast confirmation beeps from the InGrid System. If there are no confirmation beeps, check to make sure the Siren Detector is correctly attached to the mounting bracket, then repeat the steps above.

Once the Siren Detector has been added to the InGrid system...

8. Use the Edit feature to rename the device (optional). NOTE: Press DELETE to erase text and use the keypad keys to type in a new name. Once you are satisfied with the entered name, press OK.
9. Scroll down to select the type of hazard detector to which this Siren Detector will be associated (Smoke/Fire, Carbon Monoxide or Both) and press SELECT.

Important: the selection you make during this configuration step will determine the type of message that is sent to the monitoring center as described earlier in this document.

10. Press OK to return to the Main menu.

Testing your Siren Detector

Immediately replace the battery on any Siren Detector when you are notified that the battery condition is low. Replace the battery on your hazard detectors at least once per year or whenever you see and/or hear a low battery indication. Hazard detectors and/or the Siren Detector may not operate properly when the battery condition is low.

Important:

THE SIREN DETECTOR MUST BE SUCCESSFULLY TESTED (TOGETHER WITH THE HAZARD DETECTOR) AT LEAST TWICE PER YEAR. A LOW BATTERY OR OTHER CONDITION CHANGES MAY CAUSE POOR PERFORMANCE OF THE HAZARD DETECTOR AND/OR SIREN DETECTOR.

ONCE SIREN DETECTORS ARE INSTALLED, TESTING THE SIRENS WITH EXISTING HAZARD DETECTORS MAY RESULT IN A FIRE OR CARBON MONOXIDE MESSAGE BEING SENT TO THE MONITORING CENTER, RESULTING IN AN EMERGENCY DISPATCH TO YOUR PREMISES.

THERE ARE TWO OPTIONS TO AVOID THIS SITUATION.

OPTION A. TEMPORARILY DISABLE THE MONITORING OF YOUR SYSTEM THROUGH YOUR MY INGRID WEB PORTAL ACCOUNT PRIOR TO TESTING THE HAZARD DETECTORS. RE-ENABLE MONITORING AFTER YOU HAVE COMPLETED TESTING.

OPTION B. ON THE HANDSET OR CONSOLE, PUT THE SYSTEM INTO "SENSOR TEST" MODE (UTILITIES -> SYSTEM TEST -> SENSOR TEST) PRIOR TO TESTING THE HAZARD DETECTORS. THE SYSTEM WILL RETURN TO NORMAL OPERATION WHEN THE TEST IS COMPLETED.

FCC Information

FCC Part 15

This device complies with Part 15 of the FCC Rules. Operation is subject to the following two conditions: (1) This device may not cause harmful interference, and (2) this device must accept any interference received, including interference that may cause undesired operation.

Caution:

Changes and modifications to this product not expressly approved by InGrid, Inc. could void not only the user's authority to operate this device, but also the limited warranty.

Note:

This equipment has been tested and found to comply with the limits for a Class B digital device, pursuant to Part 15 of the FCC Rules. These limits are designed to provide reasonable protection against harmful interference in a residential installation. This equipment generates, uses, and can radiate radio frequency energy and, if not installed and used in accordance with the instructions, may cause harmful interference to radio communications. However, there is no guarantee that interference will not occur in a particular installation. If this equipment does cause harmful interference to radio or television reception, which can be determined by turning the equipment off and on, the user is encouraged to try to correct the interference by one or more of the following measures:

- Reorient or relocate the radio or television receiving antenna
- Reorient or relocate and increase the separation between the InGrid equipment and radio or television receiver
- Connect the InGrid equipment into an outlet on a circuit different from that to which the radio or television receiver is connected
- Consult the dealer or an experienced radio/TV technician for help

This equipment should be serviced only by InGrid, Inc. or its authorized agents.

Industry Canada (I.C.) Notice

Terminal Equipment

Notice: This equipment meets the applicable Industry Canada Terminal Equipment Technical Specifications. This is confirmed by the registration number. The abbreviation, IC, before the registration number signifies that registration was performed based on a Declaration of Conformity indicating that Industry Canada technical specifications were met. It does not imply that Industry Canada approved this equipment.

Notice: The REN for this terminal equipment is marked on the equipment itself. The REN assigned to each terminal equipment provides an indication of the maximum number of terminals allowed to be connected to a telephone interface. The termination on an interface may consist of any combination of devices subject only to the requirement that the sum of the RENs of all the devices not exceed five.

Radio Equipment

The term "IC:" before the radio certification number only signifies that Industry Canada technical specifications were met.

Operation is subject to the following two conditions: (1) this device may not cause interference, and (2) this device must accept any interference, including interference that may cause undesired operation of the device.

InGrid Limited Product Warranty

INGRID LIMITED WARRANTY FOR PRODUCTS AND ACCESSORIES PURCHASED IN THE UNITED STATES OR CANADA

What Does this Warranty Cover?

Subject to the exclusions contained below, InGrid, Inc. ("InGrid") warrants the InGrid-branded or certified accessories (including all embedded software) sold by InGrid for use with the InGrid Home Security System (the "Products") to be free from defects in materials and workmanship under normal consumer usage and in accordance with the accompanying instructions and documentation, for the period(s) outlined below. This limited warranty is the consumer's exclusive remedy, and applies as follows to new Products purchased by consumers in the United States or Canada, which are accompanied by this written warranty:

PRODUCTS COVERED/LENGTH OF COVERAGE (the "Warranty Period")

New Products: One (1) year from the date of purchase by the first consumer purchaser of the Product.

Products that are Repaired or Replaced.

The balance of the original warranty or for ninety (90) days from the date returned to the consumer, whichever expires later.

WHAT IS NOT COVERED? (EXCLUSIONS)

Normal Wear and Tear. Periodic maintenance, repair and replacement of parts due to normal wear and tear are excluded from coverage.

Ornamental Decorations. Ornamental decorations such as emblems and graphics and other decorative elements, are excluded from coverage.

Batteries. Only batteries whose fully charged capacity falls below 80% of their rated capacity and batteries that leak are covered by this limited warranty.

Abuse & Misuse. Defects or damage that result from the following are excluded from coverage under this limited warranty:

- improper operation, storage, misuse or abuse, accident or neglect, such as physical damage (cracks, scratches, etc.) to the surface of the Product resulting from misuse;
- contact with moisture, liquids, water, rain, extreme humidity, heavy perspiration or makeup, sand, dirt or the like, food, or proximity to or exposure to heat or cold, fire, flood, or lightning;
- other acts which are inconsistent with the instructions and documentation that accompany the Products; and
- use of the Products with any system other than the InGrid Home Security System.

Use of Non-InGrid Products and Accessories. Defects or damage that result from the use of Non-InGrid branded or certified products, accessories, software or other peripheral equipment are excluded from coverage, including without limitation defects or damage to Products that result from such use.

Unauthorized Service or Modification. Defects or damages resulting from service, testing, adjustment, installation, maintenance, alteration, including without limitation, software changes, or modification in any way by someone other than InGrid, or its authorized agents, are excluded from coverage.

Altered Products. Products with the following characteristics are excluded from coverage:

- serial numbers or date tags that have been removed, altered or obliterated;
- broken seals or Products that show evidence of tampering;
- mismatched board serial numbers; or
- nonconforming or non-InGrid housings, antennas, or parts.

Communication Services. Defects, damages, or the failure of Products due to any communication service or signal not provided directly by InGrid is excluded from coverage.

Out of Warranty Products. Defects or damages reported to InGrid after the Warranty Period are excluded from coverage.

WHO IS COVERED?

This warranty extends only to the first consumer purchaser, and is not transferable.

WHAT WILL INGRID DO?

InGrid, at its option, will at no charge repair, replace or refund the purchase price of any Products that do not conform to this limited warranty. We may use functionally equivalent reconditioned/refurbished/pre-owned or new Products or parts. No data, added to your Products, including but not limited to component names, and system preferences, will be reinstalled.

HOW TO OBTAIN WARRANTY SERVICE OR OTHER INFORMATION?

To obtain service or information, please call:
InGrid Customer Support at: 1-877 InGrid-7 (1-877-464-7437)
Or email us at: warranty@ingridhome.com

You will receive instructions on how to ship the Products, at your expense, to an InGrid Authorized Repair Center. To obtain service, you must include:

- a copy of your receipt, bill of sale or other comparable proof of purchase;
- a written description of the problem;
- the complete physical address of the location where the system was installed and most importantly;
- your address and telephone number; and,
- the "Return Merchandise Authorization" or "RMA" number that InGrid provides to you.

WHAT OTHER LIMITATIONS ARE THERE?

ANY IMPLIED WARRANTIES, INCLUDING WITHOUT LIMITATION THE IMPLIED WARRANTIES OF MERCHANTABILITY AND FITNESS FOR A PARTICULAR PURPOSE, ARE HEREBY DISCLAIMED TO THE MAXIMUM EXTENT PERMITTED BY LAW. THE REPAIR OR REPLACEMENT AS PROVIDED UNDER THIS EXPRESS LIMITED WARRANTY IS THE SOLE AND EXCLUSIVE REMEDY OF THE CONSUMER, AND INGRID'S SOLE AND EXCLUSIVE LIABILITY HEREUNDER, AND IS PROVIDED IN LIEU OF ALL OTHER WARRANTIES, EXPRESS OR IMPLIED, IN NO EVENT SHALL INGRID BE LIABLE, WHETHER IN CONTRACT, TORT (INCLUDING NEGLIGENCE) OR OTHERWISE, FOR DAMAGES IN EXCESS OF THE PURCHASE PRICE OF THE PRODUCT GIVING RISE TO THE DAMAGES, OR FOR ANY INDIRECT, INCIDENTAL, SPECIAL, PUNITIVE, EXEMPLARY OR CONSEQUENTIAL DAMAGES OF ANY KIND, OR LOSS OF REVENUE OR PROFITS, LOSS OF BUSINESS, LOSS OF INFORMATION OR DATA, SOFTWARE OR APPLICATIONS OR OTHER FINANCIAL LOSS ARISING OUT OF OR IN CONNECTION WITH THE USE OF OR THE ABILITY OR INABILITY TO USE THE PRODUCTS OR SOFTWARE TO THE FULL EXTENT THESE DAMAGES MAY BE DISCLAIMED BY LAW.

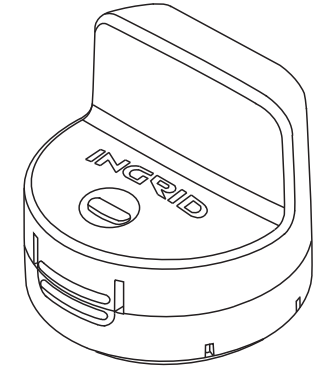
Some states and jurisdictions do not allow the limitation or exclusion of incidental or consequential damages, or limitation of implied warranties, so the above limitations or exclusions may not apply to you. This warranty gives you specific legal rights, and you may also have other rights that vary from state to state or from one jurisdiction to another.

© InGrid, Inc., 2008.

Protected by US patents and patents pending.
7,202,789, 7,119,658, 7,091,827, 7,084,756, 7,079,034, 7,079,020,
7,057,512, 7,053,764, 7,042,353, 7,023,341, 7,019,639, 6,886,459,
D538,737, D534,519, D534,146

InGrid Home Security
© 2008 InGrid, Inc.
All rights reserved.
InGrid logo is a registered trademark.

INGRID®



Siren Detector Installation Instructions
Model SDC1000



Part No. 100000772
Rev. B

Printed in China

INGRID®

Siren Detector Kit Contents

SDC1000 Siren Detector
#6 screw (2) and wall anchor (2)
Device Guide
CR2450 battery

Introduction

Siren Detectors operate in tandem with existing home hazard detectors. A "hazard detector" is a device which monitors the home environment for the existence of a hazard condition, such as smoke, fire or carbon monoxide. Hazard detectors utilize internal electronics to sample the surrounding air and monitor for conditions that indicate the occurrence of the targeted hazard. If a hazard condition is sensed, the device typically responds with a visual and/or siren alert.

InGrid Siren Detectors operate differently. InGrid Siren Detectors are designed to monitor for the occurrence of siren sounds coming from a nearby hazard detector. When they detect the siren sound of a hazard detector (located no more than 4 inches away) and the sound meets certain pre-determined audio requirements, the Siren Detector will report this event back to the InGrid system. Upon receiving the siren detection message, the InGrid system will sound an audio alert on all pre-programmed audio alert devices and (if the InGrid system is actively monitored under a current service plan and is connected to an operating telecommunications circuit) will send a corresponding message to the monitoring center. This message will be based upon the type of hazard detector for which the siren detector has been configured ("Fire/Smoke" or "Both" setting - a fire alarm message will be sent, "Carbon Monoxide" - a carbon monoxide message will be sent).

Important:
THE INGRID MODEL SDC1000 SIREN DETECTOR DOES NOT DETECT THE EXISTENCE OF HAZARDS SUCH AS FIRE, SMOKE, OR CARBON MONOXIDE. INSTEAD, IT MONITORS FOR AND DETECTS THE SOUND OF HAZARD DETECTOR SIRENS THAT FEATURE ALL FOUR OF THE FOLLOWING CHARACTERISTICS: 1. ARE LOCATED WITHIN 4 INCHES OF THE SIREN DETECTOR, 2. ARE MANUFACTURED IN THE LAST 10 YEARS IN ACCORDANCE WITH UL985 INDUSTRY STANDARDS, 3. CREATE SOUND VOLUME OF AT LEAST 85 DBA AT 10 FEET AT 3000 HZ, AND 4. SOUND FOR AT LEAST 20 CONTINUOUS SECONDS. WHILE MOST HAZARD DETECTORS LESS THAN 10 YEARS OLD MEET THESE REQUIREMENTS, SIREN DETECTOR USERS ARE EXPECTED TO SUCCESSFULLY TEST THE SIREN DETECTOR TOGETHER WITH THE HAZARD DETECTOR AT LEAST TWICE PER YEAR. IF A SIREN DETECTOR DOES NOT SUCCESSFULLY RESPOND TO A HAZARD DETECTOR SIREN DURING A TEST, IT MUST NOT BE RELIED UPON TO DETECT A SIREN DURING AN ACTUAL HAZARD CONDITION. THE NATIONAL FIRE PROTECTION ASSOCIATION (NFPA) RECOMMENDS REPLACEMENT OF HAZARD DETECTORS THAT ARE 10 YEARS (OR MORE) OLD SINCE THE INTERNAL ELECTRONICS MAY NO LONGER RELIABLY DETECT HAZARDS.

USERS ARE EXPECTED TO REPLACE HAZARD DETECTOR BATTERIES AT LEAST ONCE PER YEAR SO THAT THE ELECTRONICS (INCLUDING THE SIREN) OPERATE PROPERLY DURING A HAZARD CONDITION.

Installing Your InGrid Siren Detector

Prior to adding a Siren Detector it is necessary to first install and activate your InGrid System and to have a Handset and/or Console available for use in the Siren Detector installation process.

1 Select The "Target" Hazard Detector(s)

Choose which existing hazard detector(s) in your home you would like to have monitored. NOTE: Siren Detectors are designed to be mounted within 4 inches of an existing hazard detector and may not operate properly if mounted farther away.

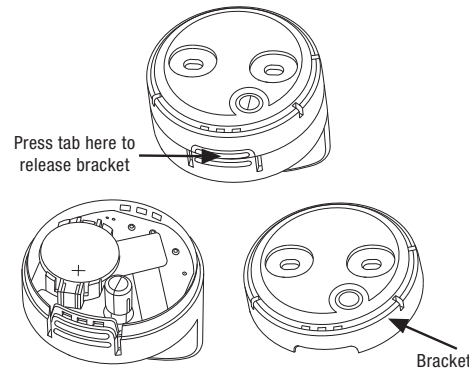
Important:
IF HAZARD DETECTORS ARE INTERCONNECTED WITHIN A PROTECTED PREMISES, ONE HAZARD DETECTOR MAY SOUND ITS SIREN BASED UPON A SIGNAL RECEIVED FROM ANOTHER INTERCONNECTED HAZARD DETECTOR. IN THIS MANNER, ONE SIREN DETECTOR MAY BE USEFUL FOR MONITORING HAZARDS REPORTED BY MORE THAN ONE HAZARD DETECTOR.

DETERMINE IF ONE OR MORE HAZARD DETECTORS ARE INTERCONNECTED BY PRESSING AND HOLDING THE TEST BUTTON ON ONE HAZARD DETECTOR FOR AT LEAST 30 SECONDS. IF SIRENS ON OTHER HAZARD DETECTORS SOUND DURING THIS TEST, THESE OTHER HAZARD DETECTORS ARE INTERCONNECTED. IF HAZARD DETECTORS IN THE PROTECTED PREMISES ARE NOT INTERCONNECTED, A SIREN DETECTOR IS REQUIRED FOR EACH EXISTING HAZARD DETECTOR IN THE PROTECTED PREMISES THAT NEEDS TO BE MONITORED.

THE USE OF AT LEAST TWO (2) INDIVIDUAL SIREN DETECTORS (MONITORING TWO INDIVIDUAL HAZARD DETECTORS) IS STRONGLY RECOMMENDED, REGARDLESS OF THE EXISTING HAZARD DETECTOR INSTALLATION TYPE.

2 Remove The Siren Detector Bracket

Turn the Siren Detector over and press the Bracket release tab while gently pulling the bracket away from the device.

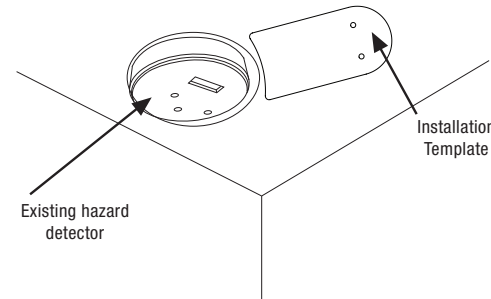


3 Select And Mark The Bracket Mounting Location

Locate and remove the Installation Template on the bottom of the Siren Detector box.

Place the Installation Template directly next to the (existing) hazard detector so that the large curved side of the template rests against the outer edge of the hazard detector.

Using a pencil or pen, mark the location of the two (screw) hole openings in the template on the ceiling. These marks will be used as a mounting location reference in the next step.

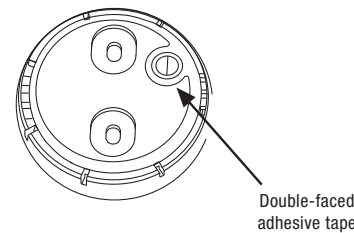


4 Install The Siren Detector Bracket

Attach the Siren Detector Bracket to the ceiling using either of the two methods described below. Materials for both options are provided.

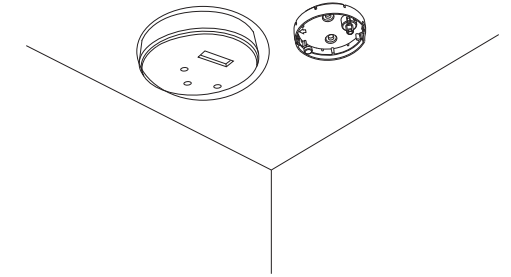
a. Double-faced adhesive tape installation

- Remove the paper backing from the double-faced adhesive tape. Position the Siren Detector Bracket slightly below the ceiling (over the marks made in the previous step) such that the arrow on the inside of the bracket faces the hazard detector. Press the bracket onto the ceiling.



b. Screws & wall anchor installation

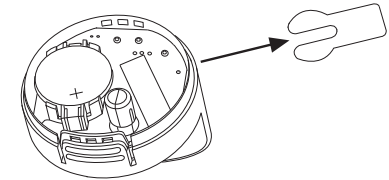
- Drill a 1/4 inch hole in each of the marked locations from the previous step and insert the (provided) wall anchors. Secure with the screws provided, making sure that the arrow on the bracket faces the hazard detector.



5 Mount The Siren Detector

Remove battery insulator tab

Turn the Siren Detector over and locate the battery insulator tab. Remove the tab by pulling it straight out. Discard the battery insulator tab once it is removed.



Important:
AFTER REMOVING THE BATTERY INSULATOR TAB, PRESS DOWN ON THE TOP OF THE BATTERY TO MAKE SURE IT HAS NOT BEEN DISLODGED IN THE PROCESS OF REMOVING THE TAB.

Install the Siren Detector

With the Siren Detector Bracket securely mounted on the ceiling next to the hazard detector, align the Siren Detector with the bracket (as shown) and snap it securely onto the Bracket.

