

INSIGNIA™

Quick Setup Guide | NS-SPBTBRICK Bluetooth Stereo Speaker with Powerbank

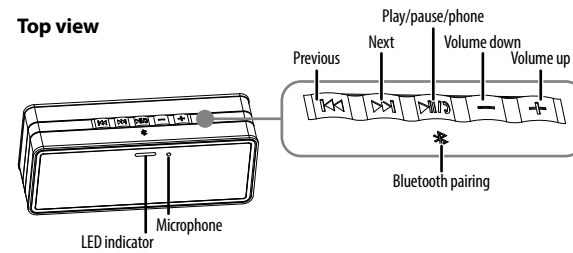
PACKAGE CONTENTS

- Bluetooth speaker
- USB cable
- *Quick Setup Guide*

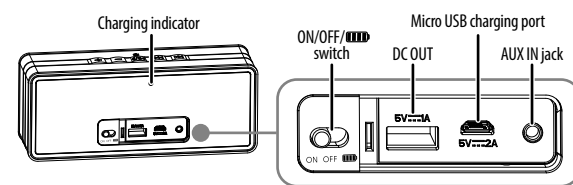
FEATURES

- Wirelessly stream from any Bluetooth device
- Rechargeable battery lasts up to 30 hours
- Integrated power bank charges your mobile devices
- Water-resistant body

Top view



Back view



Before using your new product, please read these instructions to prevent any damage.

SAFETY INSTRUCTIONS

- Never expose the product to fire as this could result in personal injury.
- Do not store the product in an extremely cold or warm environment.
- Never dismantle the product.
- Never let children play with the product.
- Do not expose the product to dampness or moisture.
- The product should not be exposed to dripping or splashing.

CHARGING YOUR SPEAKER

- 1 Connect the small end of the charging cable to the micro USB port on the back of your speaker.
- 2 Connect the other end to a USB port on your computer.

Note: When the battery is low, you will hear beeps. About five minutes later, the speaker will power off automatically.



| CHARGING INDICATOR | DESCRIPTION |
|--------------------|---------------|
| Solid red | Charging |
| Off | Fully charged |

TURNING YOUR SPEAKER ON AND OFF

- Slide the ON/OFF to **ON**. The LED indicator blinks quickly and the speaker enters pairing mode.

CHARGING AN EXTERNAL DEVICE

- 1 Open the port cover on the back of the speaker.
- 2 Plug one end of a USB cable into your external device and the other end into the DC OUT port on the speaker.
- 3 Switch the ON/OFF switch to **III**. Your external device is being charged.

CONNECTING WITH BLUETOOTH

- 1 Make sure that your Bluetooth device is turned on and within 33 feet (10 meters) of your speaker.
- 2 On your speaker, press and hold the **Bluetooth** button. Your speaker enters pairing mode, and the LED on your speaker blinks. Your speaker remains in pairing mode until it pairs with a Bluetooth device.
Note: Press and hold the **Bluetooth** button to return to pairing mode.
- 3 Turn on your Bluetooth device and turn on Bluetooth. Set your device to pairing mode, then select **NS-SPBTBRICK**. See the instructions that came with your Bluetooth device for information about pairing.
- 4 If you are asked for a password, enter **0000**. When pairing is complete, the LED on your speaker lights solid blue.
- 5 To disconnect from the paired Bluetooth device, press and hold the **Bluetooth** button on your speaker for three seconds. You will hear a beep. Your speaker disconnects from the Bluetooth device and enters pairing mode again.

| LED | DESCRIPTION |
|-------------|--|
| Blinks blue | Speaker is in pairing mode |
| Solid blue | Speaker is paired OR an AUX device is connected |

RECONNECTING TO A PAIRED DEVICE

When your speaker is not paired to a device, the LED blinks blue.

| Your speaker loses the Bluetooth connection if you... | To reconnect... |
|--|--|
| Turn off your speaker. | Turn on your speaker. Your speaker searches for the last connected Bluetooth device and reconnects. |
| Move the Bluetooth device out of range. | Make sure that your Bluetooth device is within 33 feet of your speaker. |
| Turn off your Bluetooth device. | Turn on your Bluetooth device, then make sure that Bluetooth is on. |
| Turn off Bluetooth on your Bluetooth device. | Turn on Bluetooth on your Bluetooth device. |
| Connect your Bluetooth device to another Bluetooth device. | Disconnect your Bluetooth device from the other Bluetooth device, then set your device to pairing mode. Select NS-SPBTBRICK on your Bluetooth device. |

Notes:

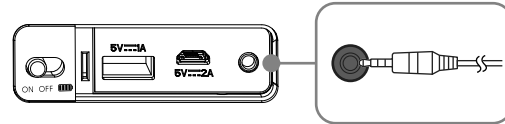
- If a device does not automatically reconnect, you may need to reselect **NS-SPBTBRICK** on your Bluetooth device.
- If you move your device out of range, it will remain paired for 10 minutes, but no sound will come from the speaker until you come back within range. After 10 minutes, the speaker will reenter pairing mode.

LISTENING TO MUSIC

- 1 Slide the ON/OFF switch to **ON**, then connect to your Bluetooth device.
- 2 Begin playback on your Bluetooth device.
- 3 Adjust the volume on your speaker by pressing the + or - buttons.
Note: Press the **Play/Pause** to start playback. Press the **Previous** and **Next** to go to the next or previous track.

PLAYING MUSIC FROM AN EXTERNAL SOUND SOURCE

- 1 Connect an external sound source, such as an MP3 player, by plugging an audio cable with a 3.5 mm plug (not included) into the **AUX IN** jack on the right side of your speaker.



Notes:

- When an AUX cable is connected, Bluetooth goes into standby mode. To play music from your Bluetooth device, press play (▶/⏮) on the speaker or your Bluetooth device. To return to AUX mode, press pause or stop on the speaker or your Bluetooth device.
 - When playing music via audio cable, you should pause the Bluetooth sound source paired to your speaker or disconnect the Bluetooth device.
- 2 Start playback on the external device.
 - 3 Press + or – to adjust the volume.
 - 4 Control playback using the controls on the external device.

TAKING A CALL

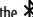
- 1 Press the ▶/⏮ button briefly to accept an incoming call.
OR
Press and hold the ▶/⏮ button to reject an incoming call.
- 2 Press the ▶/⏮ button during a call to end the call.

RESETTING THE SPEAKER

Caution: This will remove all paired Bluetooth devices.

- Turn on the speaker, then press and hold the previous button (◀/⏭) and the volume up + buttons at the same time for approximately five seconds. You will hear a warning tone and LED indicator will blink, then power off.

TROUBLESHOOTING

| PROBLEM | SOLUTION |
|--|---|
| No power | <ul style="list-style-type: none"> • Make sure that your speaker's battery is charged. • Make sure that your speaker is turned on. |
| No sound or low volume | <ul style="list-style-type: none"> • Make sure that your Bluetooth device is turned on, Bluetooth is turned on, and NS-SPBTBRICK is selected. • Turn up the volume on your speaker. • Turn up the volume on your Bluetooth device. • Make sure that your Bluetooth device is not muted. • Make sure that your speaker is not paired to another Bluetooth device. • Make sure that your Bluetooth device is not paired to another Bluetooth device. • Shorten the distance between your speaker and your Bluetooth device. |
| Cannot establish Bluetooth connection | <ul style="list-style-type: none"> • Make sure that your speaker is in pairing mode. Press and hold the  button to reenter pairing mode. • Shorten the distance between your speaker and your Bluetooth device. • Turn your devices off, then on. Re-pair your speaker and your Bluetooth device. • Make sure that your speaker is not paired to another Bluetooth device. • Make sure that your speaker and Bluetooth device are both in pairing mode. • Make sure that your Bluetooth device supports Bluetooth v4.0 and below. • Make sure that your Bluetooth device is not connected to any other device. • Make sure that you have selected NS-SPBTBRICK on your Bluetooth device. • Make sure that AUX external device is not connected. Disconnect the AUX cable and reenter pairing mode. |
| My Bluetooth device keeps unpairing | <ul style="list-style-type: none"> • Shorten the distance between your speaker and your Bluetooth device. • If the battery on your Bluetooth device is low, recharge the battery. • If the battery on your speaker is low, recharge the battery. |
| "NS-SPBTBRICK" does not appear on my Bluetooth device | <ul style="list-style-type: none"> • Shorten the distance between your speaker and your Bluetooth device. • Put your speaker into pairing mode, then refresh your list of Bluetooth devices. For more information, see the documentation that came with your Bluetooth device. |

LEGAL NOTICES

FCC

This device complies with Part 15 of the FCC rules. Operation is subject to the following two conditions: 1) this device may not cause harmful interference, and 2) this device must accept any interference received, including interference that may cause undesired operation. This equipment has been tested and found to comply with the limits for a Class B digital device, pursuant to Part 15 of the FCC rules. These limits are designed to provide reasonable protection against harmful interference in a residential installation. This equipment generates, uses and can radiate radio frequency energy and if not installed and used in accordance with the instructions, may cause harmful interference to radio communications. However, there is no guarantee that interference will not occur in a particular installation. If this equipment does cause harmful interference to radio or television reception, which can be determined by turning the equipment off and on, the user is encouraged to try correct the interference by one or more of the following measures:

- Reorient the receiving antenna.
- Increase the separation between the equipment and receiver.
- Connect the equipment into and outlet on a circuit different from that to which the receiver is connected.
- Consult the dealer or an experienced radio/TV technician for help.

You are cautioned that changes or modifications not expressly approved by the party responsible for compliance could void your authority to operate the equipment.

RSS

IC Statement

This device complies with Industry Canada licence exempt RSS standard(s). Operation is subject to the following two conditions: (1) this device may not cause interference, and (2) this device must accept any interference, including interference that may cause undesired operation of the device.

Le présent appareil est conforme aux CNR d'Industrie Canada applicable s aux appareils radio exempts de licence. L'exploitation est autorisée aux deux conditions suivantes : (1) l'appareil ne doit pas produire de brouillage, et (2) l'utilisateur de l'appareil doit accepter tout brouillage radioélectrique subi, même si le brouillage est susceptible d'en compromettre le fonctionnement.

ONE-YEAR LIMITED WARRANTY

Visit www.insigniaproducts.com for details.

CONTACT INSIGNIA:

1-877-467-4289 (U.S. and Canada)
01-800-926-3000 (Mexico)
www.insigniaproducts.com

INSIGNIA is a trademark of Best Buy and its affiliated companies. Distributed by Best Buy Purchasing, LLC ©2015 Best Buy. All rights reserved.
Made in China