

240mm

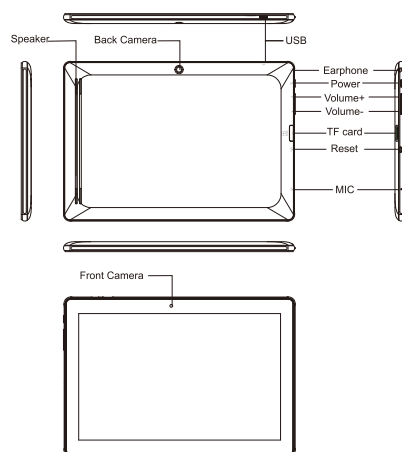
60mm

100mm

Quick Setup Guide

10.1 Inch Quad Core Tablet

Features



Important safety instructions

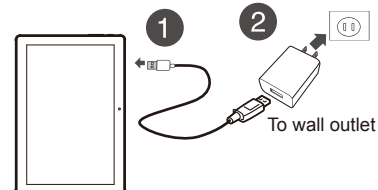
- 1) Please read this instruction carefully before using your device to ensure safe and correct use.
- 2) Always leave sufficient space around the product for ventilation. Do not place product in or on a bed, rug, in a bookcase or cabinet that may prevent air flow through vent openings.
- 3) Do not use this unit near water. Do not place over the unit any container with liquid inside.
- 4) Please do not put your device in high temperature, moisture or dust place. The tablet is not waterproof.
- 5) Avoid falling or violent collision. Do not violently shake the touch screen, otherwise, it could lead to damage or display abnormal.
- 6) If system shutdown automatically, it means the battery may used up, battery charging is required.
- 7) Please charge the tablet regularly if not in use for a long time to avoid the damage caused by the excessive consumption of battery.
- 8) Do not disassemble or use alcohol, thinner or benzene class to swab product surface.
- 9) Please do not use the tablet when driving or walking in the street, otherwise it may lead an accident.
- 10) Please choose the appropriate volume, if had tinnitus, please lower the volume or stop using.
- 11) When CPU operates in high speed, especially playing 3D games or High-definition video for a long time, the fuselage will have fever.
- 12) The battery is contained with the device, please do not take out the battery.

1. Charging the battery

Note: Charge your tablet fully before using it the first time.

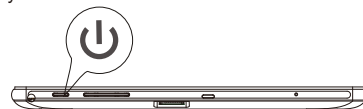
- 1) Connect the micro USB cable to your tablet.
- 2) Connect the other end of the micro USB cable to the USB power adapter (wall charger), then plug the adapter into a power outlet. It takes about three hours to fully charge your tablet.

Caution: Use only the included power adapter to charge your tablet's battery. An incompatible adapter may damage your tablet.



2. Turning on your tablet

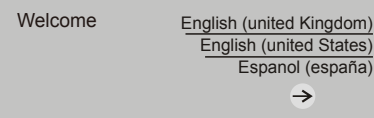
Press and hold the  (power) button on the side of your tablet.



3. Setting up your tablet

When you turn on your tablet for the first time, you'll be prompted to set up things like Wi-Fi and email.

Follow the instructions displayed on your tablet to complete setup.



4. Turning off your tablet:

- 1) Press and hold  (power) until the Power off screen opens.



- 2) Tap Power Off.

DIGILAND
www.digi-land.net
Made in China

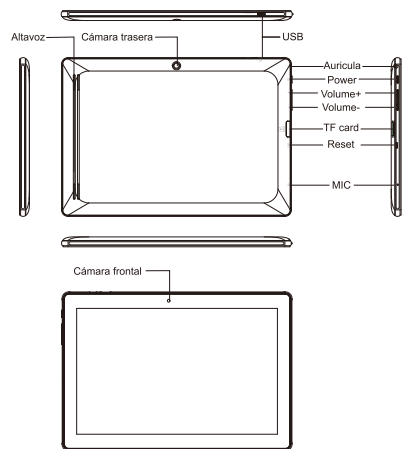
面一

△此部分折叠在最外面

Guía de instalación rápida

10.1 Inch Quad Core Tableta

Características



Importante instrucciones de seguridad

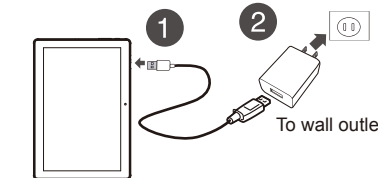
- 1) Por favor, lea atentamente este manual antes de usar su dispositivo con el fin de asegurar el uso seguro y correcto.
- 2) Siempre deje suficiente espacio para ventilación alrededor del producto. No ponga el producto en la cama, alfombra, librero o gabinete que pueda obstruir la corriente de aire a través de aperturas de ventilación.
- 3) No utilice esta unidad cerca de agua. No coloque sobre la unidad ningún recipiente con líquido en su interior.
- 4) Por favor, no ponga el dispositivo en alta temperatura, humedad o el lugar lleno de polvo; la tableta no es resistente al agua.
- 5) Evitar caída o colisión violenta, no agitar violentamente la pantalla táctil, de lo contrario, podría provocar daños o visualización anormal.
- 6) Si el sistema se apague de forma automática, será arrancable de nuevo poco después de la parada.
- 7) Por favor, cargue la tableta con regularidad si no usarla durante mucho tiempo para evitar daños causados por el consumo excesivo de la batería.
- 8) No desmonte, ni utilice alcohol, disolvente o clase benceno para frotar la superficie del producto.
- 9) Por favor, no use la tableta cuando se conduce o se camina por la calle, de lo contrario puede provocar un accidente.
- 10) Por favor, elija el volumen adecuado, si tenía tinnitus, por favor, baje el volumen o deje de usar.
- 11) Cuando la CPU se funciona bajo alta velocidad, especialmente en los juegos 3D o en modo de reproducción a largo tiempo de alta definición de video, el fuselaje tendrá el fenómeno de fiebre.
- 12) La batería está contenida con el dispositivo, por favor

1. Carga de la batería

Nota: cargue el paquete de baterías completamente antes de usarlo por primera vez.

- 1) Conecte el cable micro USB a su tableta.
- 2) Enchufe el otro extremo del cable micro USB al adaptador de alimentación USB (cargador de pared) y conecte el adaptador en un tomacorriente. Se necesita aproximadamente tres horas para cargar completamente su tableta.

Cuidado: use solamente el adaptador de alimentación incluido la batería de su tableta. Un adaptador incompatible puede dañar su tableta.



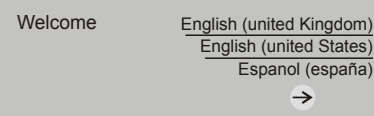
2. Encendido de su tableta

Mantenga presionado el botón  (encendido) en la parte lateral de su tableta.




3. Preparación de su tableta

Cuando encienda su tableta por primera vez, se le pedirá configurar funciones como Wi-Fi y el correo electrónico. Siga las instrucciones que se muestran en su tableta para completar la instalación.



4. Para apagar su tableta:

- 1) Mantenga presionado el botón  (encendido) hasta que se abra la pantalla Power off (Desconectar).



- 2) Toque apagar (Power Off).

DIGILAND
www.digi-land.net
Hecho en China

面二

注释:
Remarks:

切线
Cut line

折线
Folding line



规格标注
Size marking

描述
Description

类型 安装指南
Structure Style

材质 80g双胶纸
Material

工艺 双面/单黑印刷, 风琴折
technique

尺寸 折前240*100mm, 折后60*100mm
Size

公差 ±3mm 料号
Tolerance K3 NO.

文件名 18MHZ031-QSG-V1.1
File Name

机型 MID1016
Project#

客户/品牌 DIGILAND
Customer

类型 插页 设计 邹剑文
Style Designer

比例 1:1 审核 韦远坤
Scale Checked

版次 V1.1 设计日期 2018.08.01
Revision Design Date

FCC Statement

This equipment has been tested and found to comply with the limits for a Class B digital device, pursuant to part 15 of the FCC rules. These limits are designed to provide reasonable protection against harmful interference in a residential installation. This equipment generates, uses and can radiate radio frequency energy and, if not installed and used in accordance with the instructions, may cause harmful interference to radio communications. However, there is no guarantee that interference will not occur in a particular installation. If this equipment does cause harmful interference to radio or television reception, which can be determined by turning the equipment off and on, the user is encouraged to try to correct the interference by one or more of the following measures:

- Reorient or relocate the receiving antenna.
- Increase the separation between the equipment and receiver.
- Connect the equipment into an outlet on a circuit different from that to which the receiver is connected.
- Consult the dealer or an experienced radio/TV technician for help.

To assure continued compliance, any changes or modifications not expressly approved by the party.

Responsible for compliance could void the user's authority to operate this equipment. (Example- use only shielded interface cables when connecting to computer or peripheral devices).

This equipment complies with Part 15 of the FCC Rules. Operation is subject to the following two conditions:

- (1) This device may not cause harmful interference, and
- (2) This device must accept any interference received, including interference that may cause undesired operation.

RF warning statement:

The device has been evaluated to meet general RF exposure requirement. The device can be used in portable exposure condition without restriction.