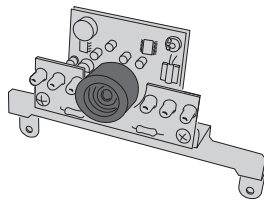


CCM-RE1

Color CCTV Camera Kit

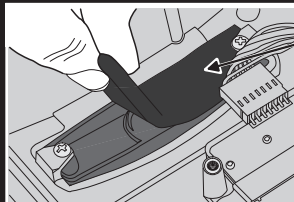


Installation Instructions

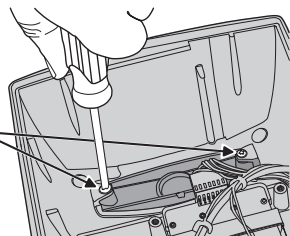
Linear

(760) 438-7000
USA & Canada (800) 421-1587 & (800) 392-0123
Toll Free FAX (800) 466-1340
www.linearcorp.com

2. REMOVE FACTORY INSTALLED FOAM & EXISTING LENS

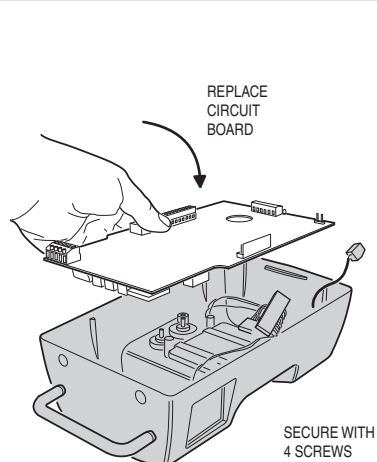


IF FACTORY FOAM IS INSTALLED, REMOVE THE FOAM AND GO TO STEP 4



IF FACTORY FOAM IS NOT INSTALLED, REMOVE THESE 2 SCREWS FROM BEHIND THE FRONT WINDOW LENS AND GO TO STEP 3

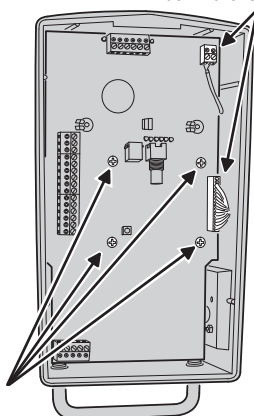
5. REPLACE CIRCUIT BOARD & BACK COVER



REPLACE CIRCUIT BOARD

SECURE WITH 4 SCREWS

RECONNECT THESE 2 CONNECTORS



PRODUCT DESCRIPTION

Linear's Model CCM-RE1 (P/N ACP00886C) CCTV Color Camera Kit can be installed inside the RE-1 Entry System. The camera provides a video signal for viewing the area in front of the entry system.

The CCTV Color Camera Kit requires the Front Window Lens Model # NDLENS-RE1.

The camera is continuously powered by the RE-1. The camera's infrared light emitters illuminate the area directly on front of the entry system for nighttime or low light operation.

The camera focus has been factory adjusted to a range of three to four feet.

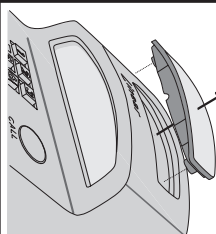
The RE-1 CAMERA jack is used to connect the camera to the main circuit board with the single-ended modular cable supplied with the camera. This cable routes power to and video from the camera.

The RE-1 VIDEO jack is the connection for a video cable with a Type "BNC" connector. Cable runs of up to 300 feet of 75-ohm RG-59 video cable are acceptable. Longer cable runs may require the use of a video amplifier.

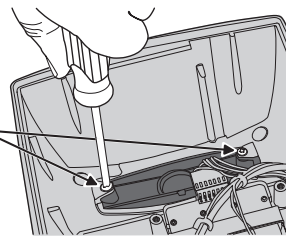
NOTE 1: Installations on existing systems must have the power disabled prior to removing the circuit board.

NOTE 2: The Color Camera will ONLY work with RE-1's front window lens model number NDLENS-RE1. THIS NEW LENS HAS FOAM ON THE BACKSIDE. For installing the color camera for new or retrofit installations, make sure that ONLY the NDLENS-RE1 is used. Remove the foam ONLY when installing the color camera.

3. REPLACE EXISTING LENS FROM CASE

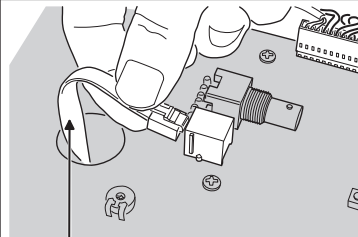


REMOVE THE FRONT WINDOW LENS AND REPLACE WITH THE NDLENS-RE1 LENS



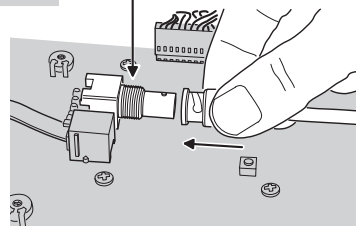
SECURE THE NDLENS-RE1 LENS WITH THESE 2 SCREWS

6. CONNECT CAMERA CABLE AND VIDEO CABLE

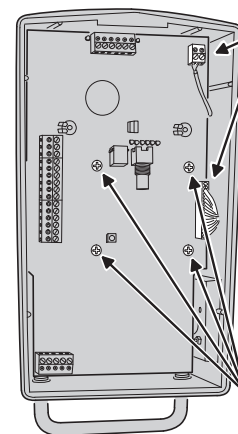


PLUG THE CAMERA CABLE FROM THE CAMERA'S JACK INTO THE RE-1'S CAMERA JACK

CONNECT THE MONITOR VIDEO CABLE INTO THE RE-1'S VIDEO OUTPUT CONNECTOR



1. REMOVE BACK COVER & CIRCUIT BOARD

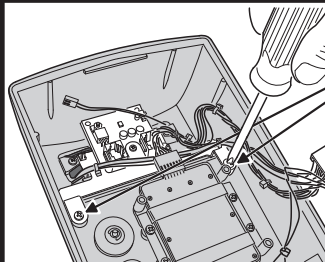


DISCONNECT THESE 2 CONNECTORS

REMOVE CIRCUIT BOARD

REMOVE THESE 4 SCREWS

4. MOUNT CAMERA & CONNECT LIGHTING POWER



SECURE THE CAMERA WITH THESE 2 SCREWS

IMPORTANT!
TO PREVENT INTERNAL INFRARED LIGHT FROM ENTERING THE CAMERA, BE SURE THE FOAM GASKET AROUND THE CAMERA'S LENS IS PRESSES FIRMLY AGAINST THE RE-1'S FRONT WINDOW LENS

INSERT THE WIRING HARNESS PLUG INTO THE 2-PIN LIGHTING CONNECTOR

LINEAR LIMITED WARRANTY

This Linear product is warranted against defects in material and workmanship for twenty four (24) months. This warranty extends only to wholesale customers who buy direct from Linear or through Linear's normal distribution channels. Linear does not warrant this product to consumers. Consumers should inquire from their selling dealer as to the nature of the dealer's warranty, if any. There are no obligations or liabilities on the part of Linear LLC for consequential damages arising out of or in connection with use or performance of this product or other indirect damages with respect to loss of property, revenue, or profit, or cost of removal, installation, or reinstallation. All implied warranties, including implied warranties for merchantability and implied warranties for fitness, are valid only until the warranty expires. This Linear LLC Warranty is in lieu of all other warranties express or implied.

All products returned for warranty service require a Return Product Authorization Number (RPA#). Contact Linear Technical Services at 1-800-421-1587 for an RPA# and other important details.