

# Instant EtherFast® Series EtherFast® Wireless-Ready USB PrintServer

Model No.: PPS1UW

## Installing the Wireless-Ready PrintServer

### Connecting the Wireless-Ready PrintServer to Your Network

1. After powering on the Wireless-Ready PrintServer, plug one end of a UTP Category 5 (or better) cable into the Wireless-Ready PrintServer's LAN Port.
2. Connect the other end of the cable into a networked hub or switch. The distance between the Wireless-Ready PrintServer and the second device should not exceed 328 feet (100 meters).
3. The **LAN** LED will become active. If the **LAN** LED does not light up, see the User Guide's Troubleshooting section for more information.

### Connecting a Printer to the Wireless-Ready PrintServer

1. Connect your printer to the Wireless-Ready PrintServer's USB port with your USB cable.
2. Power on your printer.

**Note:** After you have run the Autorun program and installed the Bi-Admin Management Utility, the Autorun will still run every time you insert the CD. Do NOT install the Bi-Admin Management Utility again. Click the **EXIT** tab to prevent duplicate installation

## The Autorun Bi-Admin Management Utility

1. Insert the Setup CD. A built-in autorun will begin the installation of the Wireless-Ready PrintServer's Bi-Admin Management Utility. Click the **Install** tab to continue.

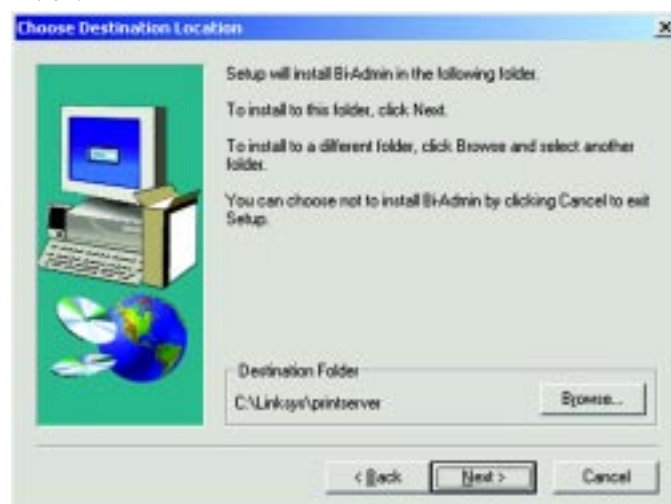
# Quick Installation

This sheet will guide you through the basic steps needed to install this product onto your network. If you have any problems during installation, refer to the **Troubleshooting** section of the **User Guide**.

2. The installation routine will begin to run and display the following screen. Close any other programs you might have running during this installation procedure and click **Next** to continue or **Cancel** to forgo installation.



3. The next screen will request that you choose a destination folder. You can either use the default folder by clicking **Next** or choose an alternate folder by clicking **Browse** and selecting a folder from the window that pops up. Click **Back** to take a step backward in the installation or **Cancel** to forgo installation.



4. The Bi-Admin Management Utility is now installed. Click **OK** on the final screen and continue to the next section, **Installing the Wireless-Ready PrintServer's Drivers** for installing the USB drivers.

**Continued on back...**

## Installing the Wireless-Ready PrintServer's Drivers

1. To begin driver installation, click **Start**, select **Run**, and type **D:\Driver\Win9xnt\AddPort\_Linksys.exe** (where D is the letter of your CD-ROM drive) in the Open field that appears. Click **OK**.
2. The **Install Wizard** window appears. Read the text that appears and click **Next**.
3. Click **Next** to accept the default Destination Directory, shown below (recommended). If you choose to utilize another directory, click **Browse** and choose the appropriate directory. Then, click **Next**.



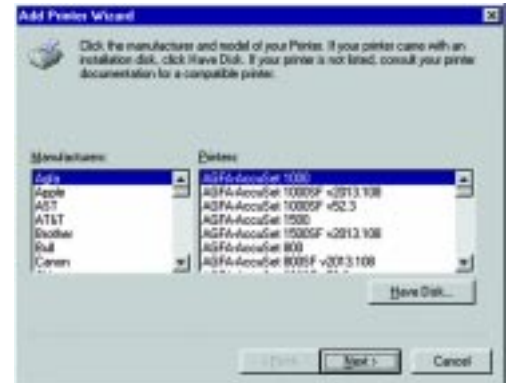
4. The following screen will assign a **Program Folder** to the Windows Taskbar. The default Program Folder is the "Linksys PrintServer Driver". If you would like to use another name for the Program Folder, type it in the **Program Folders** field or select one from the **Existing Folders** field. Click **Next** to continue.



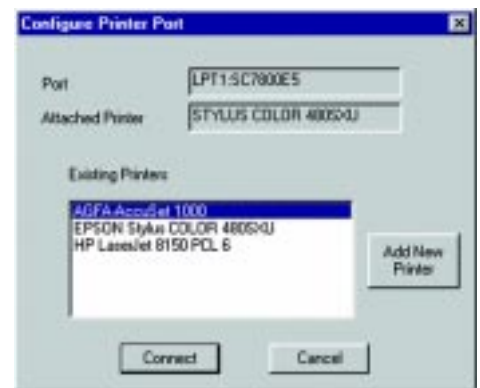
5. Driver installation is now completed but the Print Driver still needs to be configured. The Wireless-Ready PrintServer will not function properly until the Print Driver is configured. Check the box beside **Configure Print Driver Now** and click **Finish** to continue.
6. Before setting up and configuring the Print Port, follow the directions on the screen below and click **OK** to continue.
7. The Print Port Setup screen will display the Wireless-Ready PrintServer and all of the printers with which it communicates. Here, you have the option of installing the printer by highlighting its description and clicking **Next**. You can also close this screen by clicking **Close**.

8. This will display the Configure Printer Port screen. Any installed printers will be displayed in the Existing Printers field. You can install a printer by clicking **Add New Printer**.

9. The **Add New Printer Wizard** will come up at this point. Follow the standard procedure for adding printers under Windows. If you have any questions on adding printers, please refer to your Windows documentation.



10. After your printer(s) have been added, you will return to the Configure Printer Port screen. Click the **Connect** button to connect the printer(s).



11. The Printer Port Setup screen will appear again, displaying the printers which are now communicating with the Wireless-Ready PrintServer. Click the **Next** button to add any more printers or **Close** to complete the installation and configuration procedure.

### If the Wireless-Ready PrintServer does not appear in this window:

- **Windows 95/98/Millennium users** - the Wireless-Ready PrintServer probably does not have an IP address. You can assign one using the Bi-Admin software. See the section on **Bi-Admin: PrintServer Management** in the User Guide. *If you know you are using DHCP through software or your router/hub/switch, try resetting the Wireless-Ready PrintServer and clicking the Browse button again. If this does not work, refer to the Troubleshooting section in the User Guide.*

- **Windows NT 4.0 or 2000 users** - try resetting the Wireless-Ready PrintServer and clicking the Browse button again. If this does not work, refer to the Troubleshooting section in the User Guide.

**Installation of the Wireless-Ready PrintServer is now complete.** For information on configuring the Wireless-Ready PrintServer on a Windows 95/98/Millennium computer, refer to the **Windows 95, 98 and Millennium Port Configuration** section in the User Guide. If you are configuring the Wireless-Ready PrintServer on a Windows NT 4.0 or 2000 computer, refer to the **Windows NT and 2000 Port Configuration** section in the User Guide.