



Package Contents

- Wireless-G Ethernet Bridge
- Setup CD-ROM
- User's Guide on CD
- Quick Installation Guide
- Detachable Antenna
- RJ-45 Network Cable
- One Pair of Bridge Stands
- Power Adapter

2.4GHz
802.11g

Wireless-G

Ethernet Bridge

Quick Installation Guide



Wireless

1

Connect the Wireless-G Ethernet Bridge for Setup

- A** Attach the detachable antenna.
- B** Plug the included Ethernet network cable into the LAN port on the back panel of the Bridge.
- C** Plug the other end of the Ethernet network cable into the RJ-45 port of the hub, switch, or PC you wish to use to configure the Bridge.
- D** Plug the supplied power adapter into the Power port on the back panel of the Bridge. Then plug the other end into an electrical outlet.



B



D

- A** Insert the Setup CD-ROM into your PC's CD-ROM drive. The Setup Utility should run automatically, and the *Welcome* screen should appear. If it does not appear, click the **Start** button and choose **Run**. In the field that appears, enter **D:\setup.exe** (if "D" is the letter of your CD-ROM drive).
- B** Click **Setup** to begin the setup process.
- C** Make sure the Bridge is correctly connected to your wired network. Click **Next**.
- D** The screen displays a list of Wireless-G Ethernet Bridges on your network, along with their status information. Select the Bridge you are currently installing by clicking its name in the *Selection* box. Click **Yes**.



A



C



D

E A *Password* screen will appear. In lowercase letters, enter **admin** in the *Password* field. Then click **Enter**.

F The *Mode Settings* screen will appear. Select **Infrastructure** if you want your wireless computers to communicate with computers on your wired network using a wireless access point. Select **Ad-Hoc** if you want wireless computers to communicate directly with each other.

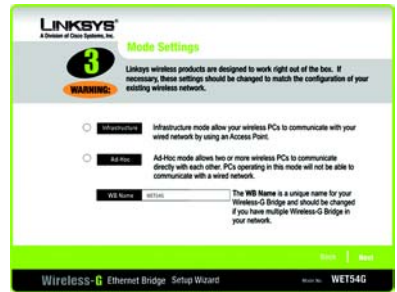
In the *WB Name* field, enter a unique name for the Bridge. Click **Next**.

G On the *Wireless Settings* screen, enter your wireless network's SSID. If you chose Ad-Hoc mode, select the channel that your network uses.

If you have Wireless-G (802.11g) and Wireless-B (802.11b) devices in your network, then keep the default *Network Mode* setting, **Mixed**. If you have only Wireless-G devices, select **G-Only**. Then click **Next**.



E



F

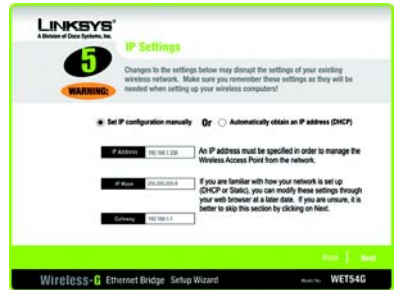


G

H The *IP Settings* screen will appear. If your network has a DHCP server, select **Automatically obtain an IP address (DHCP)**. Click **Next** and proceed to step 1.

If your network does not have a DHCP server, select **Set IP configuration manually**. Enter an IP Address, IP Mask (also known as Subnet Mask), and Gateway.

You must specify an IP address. If you are unsure about the IP Mask and Gateway, leave these two fields blank. Click **Next**.



H

NOTE: The default IP address of the Bridge is **192.168.1.226**.

On the *Security Settings* screen, set the level of encryption you want for your network, and select the Passphrase(s) and/or encryption keys.

With WPA PSK, or Pre-Shared Keys, you have two encryption options, TKIP and AES, with dynamic encryption keys. Select the type of algorithm, **TKIP** or **AES**. Enter a WPA Shared Key of 8-32 characters.

The WEP key can consist of the letters "A" through "F" and the numbers "0" through "9" and should be 10 characters in length for 64-bit encryption or 26 characters in length for 128-bit encryption.

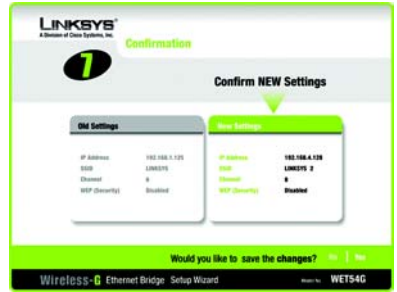
If you entered a Passphrase, the WEP key will be generated automatically.

Click the **Next** button to continue.



J Review your settings on the *Confirmation* screen. Write down the Bridge's IP Address if you want to access the Bridge's Web-based Utility. Click **Yes** to save these settings.

K On the *Congratulations* screen, click **Exit**.



J



K

3 Connect the Wireless-G Ethernet Bridge for Network Use

- A** After configuration, unplug the power adapter from the electrical outlet, and unplug the Ethernet network cable from the PC.
- B** Plug the Ethernet network cable into the RJ-45 port on the Ethernet-ready network device you wish to add to the wireless network.
- C** Plug the power adapter into a local electrical outlet.

NOTE: The Bridge features Power over Ethernet (PoE) support. PoE technology allows a PoE adapter (also known as a power injector, power hub, or inline power device) to supply data and power to an Ethernet device using a single Ethernet network cable. To use the Bridge's PoE feature, follow the instructions for your specific PoE device.

Congratulations! The installation of the Wireless-G Ethernet Bridge is complete.

LINKSYS®

A Division of Cisco Systems, Inc.

For additional information or troubleshooting help, refer to the User Guide on the CD-ROM or the Technical Support Insert. You can also e-mail for further support.

Website

<http://www.linksys.com/international>

Linksys is a registered trademark or trademark of Cisco Systems, Inc. and/or its affiliates in the U.S. and certain other countries. Copyright © 2004 Cisco Systems, Inc. All rights reserved.

WET54G-UK-EU-LA_V2-QIG-40219NC JL