

LINNO

BLACK

REMOTE CONTROL

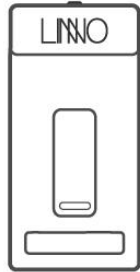
USER GUIDE



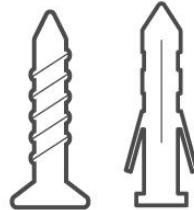
IN THIS BOX YOU'LL FIND



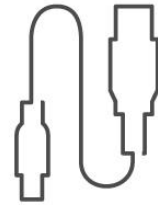
Linno
Black



Mounting
bracket



Mounting
hardware



Charging
cable

COMPATIBILITY

Smart White



Dimmer

Warm/Cool

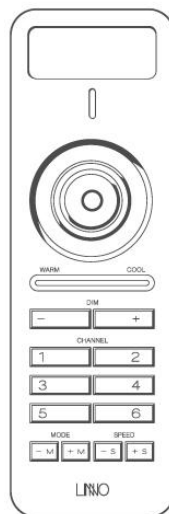
Smart Cocktail



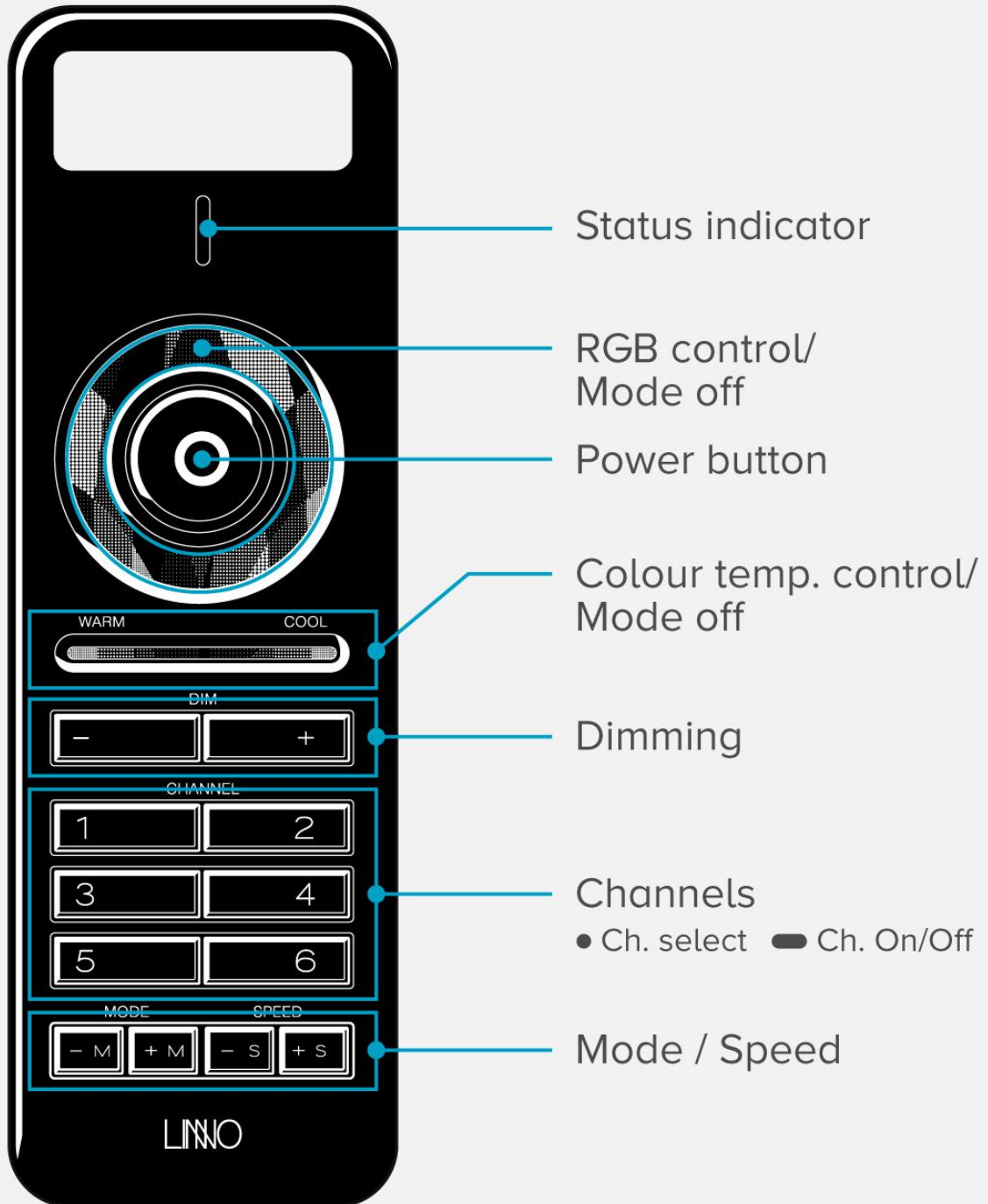
Dimmer

Warm/Cool

RGB



FUNCTIONS



CHARGING

Before using the Linno Black for the first time, we recommend fully charging the battery using the supplied charging cable.



Connect to any USB port.



Flashing orange
BATTERY LOW



Average time to charge



Flashing green
CHARGING



Continuous use



Green
CHARGED

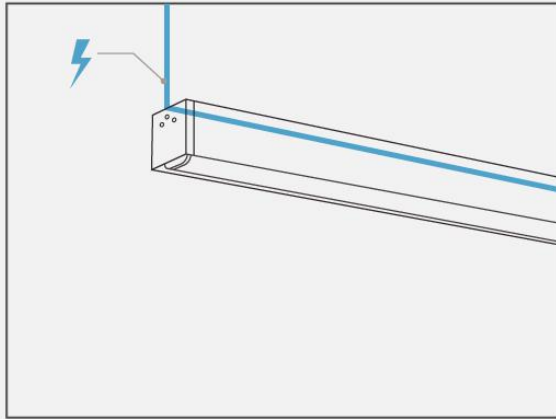


Standby period*

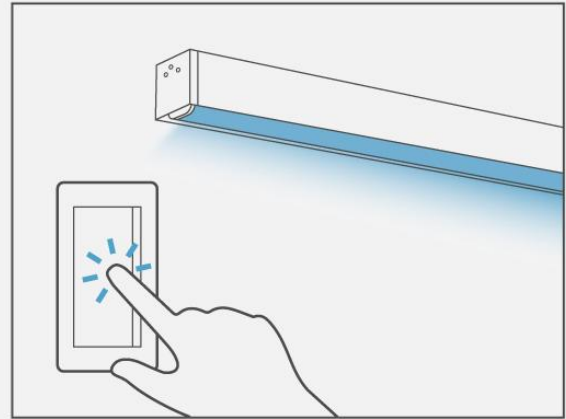
*When not in use for extended periods, try to charge the Linno Black once every 6 months.

SYNCING

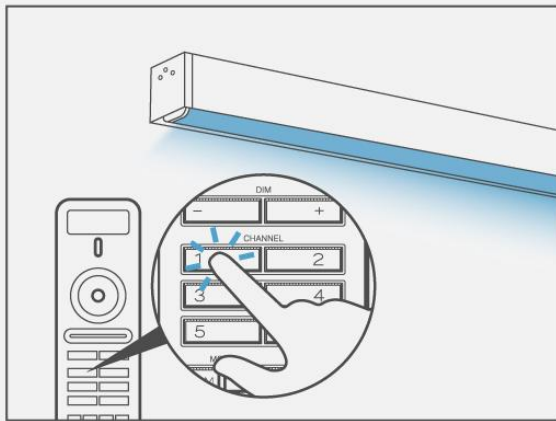
Your Linno Black needs to be synced to the lights that you want to control.



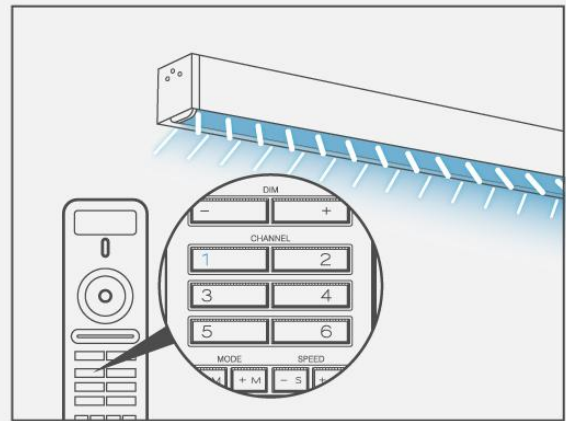
1. Ensure that your Linno light is connected to an AC power supply.



2. Turn the light on using the connected light switch.



3. Within *5 seconds* of the light turning on, press the channel button you want to sync the light with.

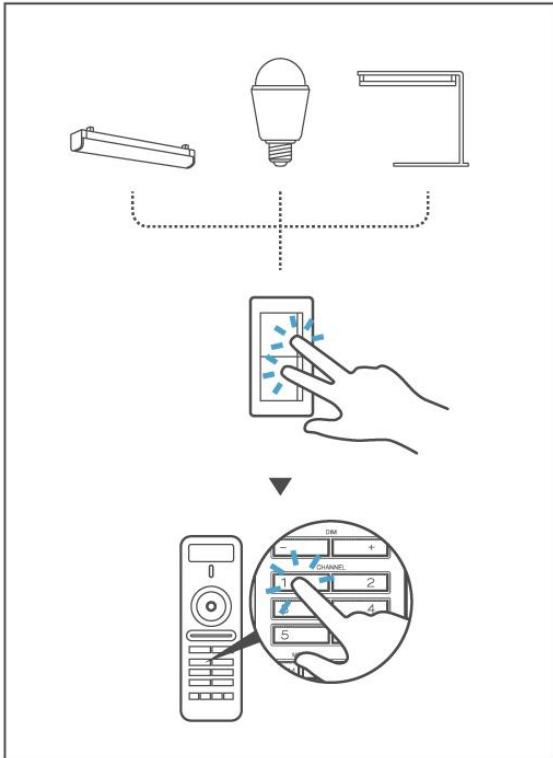


4. Your Linno light will begin to flash, showing that the sync was successful. *Press the channel button again to begin controlling your light.*

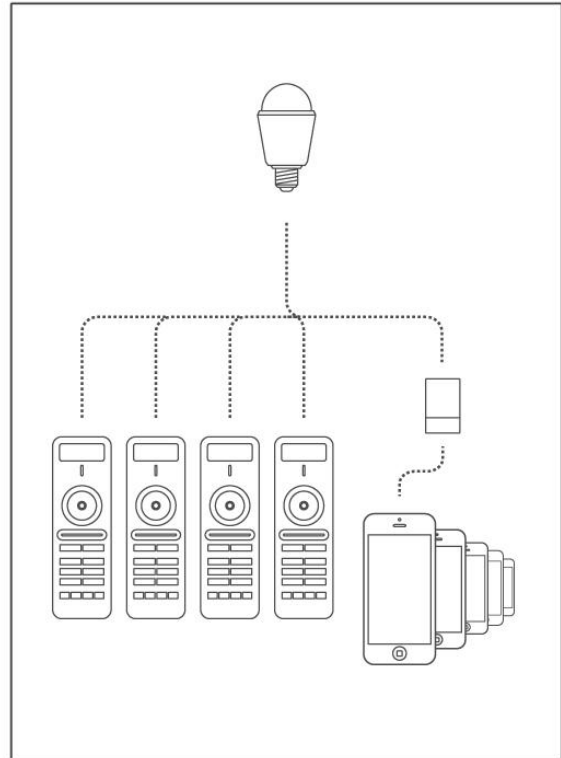
Repeat the syncing process until all the lights you want to control are synced to the desired channels.

SYNCING OPTIONS

Syncing multiple Linno lights to one channel:



Syncing multiple Linno controllers to one light:



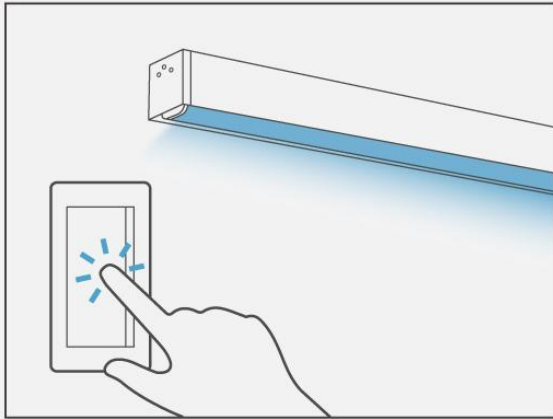
Syncing multiple lights to one channel must be done at the same time. Simply press the connected light switches in unison, then press the desired channel button on the Linno Black.

Up to 4 Linno Black remote controls and multiple Linno routers can be synced to the same Linno light. Repeat the syncing process with additional controllers as required.

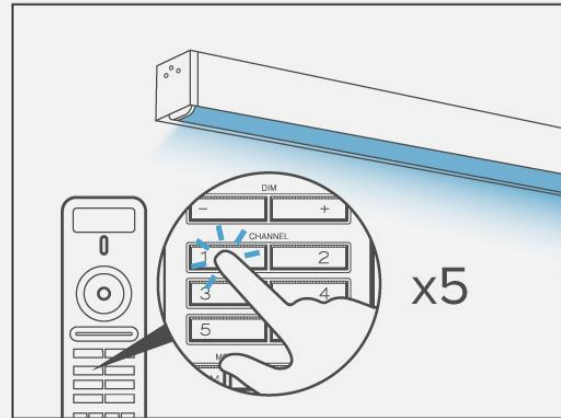
User guide continued on other side ►►

UNSYNCING

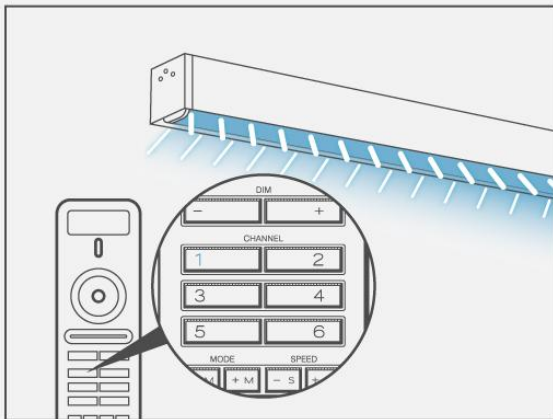
Use the following steps to unsync a light from the Linno Black:



1. Turn the Linno light on that you want to unsync using the connected light switch.



2. Within *5 seconds* of the light turning on, press the synced channel button *5 times*.

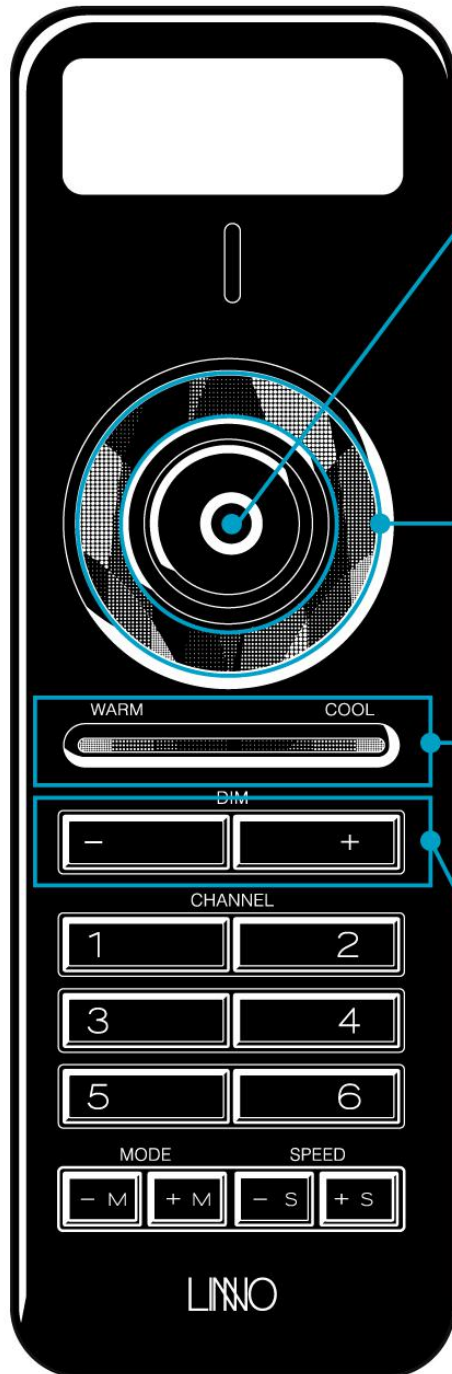


3. The light will flash repeatedly to show the unsyncing was successful.

NOTE:

Performing the unsyncing process will disconnect all Linno wireless control devices from that Linno light.

USING



Power button:
The power button acts as a master power switch. All the lights synced to the Linno black will turn on and off.

RGB control
Access to 16 million colours.

Colour temp. control
Slide right for cool white light, left for warm white light.

Dimming
The dimming control can work in unison with the RGB & Smart White controls.

USING CONTINUED



Channels

- Ch. select

Press these buttons briefly to select the channels you want to control. *The selected channel buttons will light up.*

- Ch. On/Off

Pressing the channel buttons for a long time will turn the lights connected to that channel on and off.

Mode

Numerous light modes will flash your lights in various patterns. There are 9 light modes for Smart Cocktail lights and 5 light modes for Smart White lights. *Turn off the light modes by touching the RGB or Colour temp. controls.*

Speed

The buttons will vary the speed of the light modes.

TROUBLESHOOTING

If the Linno light does not respond to the Linno Black remote control:

- Check for compatibility. The Linno Black must be used with Linno's SMART WHITE OR SMART COCKTAIL lights.
- Check that your light is plugged in and the power is switched on.
- Check that the light is synced with one of the channels on the Linno Black.
- Try re-syncing the light with one of the channels on your Linno Black.

AVOIDING INTERFERENCE

- Ensure the Linno light is in an open area with few obstructions, such as large pieces of furniture or walls. Place the light away from metallic surfaces.
- The following items may interfere with the signal from the Linno Black: microwave ovens, Direct Satellite Service (DSS) radio frequency leakage, coaxial cables connected to a satellite dish, electrical devices such as power lines/electrical railroad tracks/power stations, 2.4 GHz cordless phones.

CAUTION

- If the Linno Black comes in contact with liquid, leave the device in a dry area for at least 24 hours before operating.
- Do not open the Linno Black as this will void the warranty.
- This device is not a toy. Keep out of reach of children under three years of age.
- Clean the device with a soft, dry cloth. Do not use cleaning agents.
- The use of light modes may cause epileptic seizures. Please consult your physician if you have an epileptic condition or experience any unusual symptoms. User discretion is advised.

WARRANTY

Linno warrants that this device will be free from defects in material and workmanship and will operate for 3 years, based on an average usage of 3 hours per day, 7 days per week, when it is used as directed. Should this device not conform to the terms of this warranty, Linno will send you, at its discretion, a replacement device (new or refurbished) or a refund of your original purchase price upon receipt of the returned device with a registered receipt and a proof of purchase.

This warranty does not cover devices subject to an accident, neglect, abuse, misuse, modification or acts of God. REPLACEMENT OR REFUND IS YOUR SOLE REMEDY. EXCEPT TO THE EXTENT PROHIBITED BY APPLICABLE LAW, ANY IMPLIED WARRANTIES ARE LIMITED IN DURATION TO THE DURATION OF THIS WARRANTY. LIABILITY FOR INCIDENTAL OR CONSEQUENTIAL DAMAGES IS HEREBY EXPRESSLY EXCLUDED. This warranty gives you specific legal rights, and you may also have other rights which vary from region to region and country to country.

CONTACT

hello@linno.com

The LINNO logo consists of the word "LINNO" in a white, uppercase, sans-serif font, centered within a solid grey square.

40, Teheran-ro 28-gil,
Gangnam-gu,
Seoul, South Korea
135-921

Tel +82 2 557 9820
Fax +82 2 325 9611

© Linno Inc. All rights reserved.
www.linno.com

FCC Certification Requirements

Caution: Any changes or modifications in construction of this device which are not expressly approved by the party responsible for compliance could void the user's authority to operate the equipment.

This device complies with part 15 of the FCC Rules. Operation is subject to the following two conditions: (1) This device may not cause harmful interference, and (2) This device must accept any interference received, including interference that may cause undesired operation.

The manufacturer is not responsible for any radio or TV interference caused by unauthorized modifications to this equipment. Such modifications could void the user's authority to operate the equipment.

This equipment has been tested and found to comply with the limits for a Class B digital device, pursuant to Part 15 of the FCC Rules. These limits are designed to provide reasonable protection against harmful interference in a residential installation. This equipment generates, uses and can radiate radio frequency energy and, if not installed and used in accordance with the instructions, may cause harmful interference to radio communications. However, there is no guarantee that interference will not occur in a particular installation. If this equipment does cause harmful interference to radio or television reception, which can be determined by turning the equipment off and on, the user is encouraged to try to correct the interference by one or more of the following measures:

- Reorient or relocate the receiving antenna.**
- Increase the separation between the equipment and receiver.**
- Connect the equipment into an outlet on a circuit different from that to which the receiver is connected.**
- Consult the dealer or an experienced radio/TV technician for help.**