

FRONT

**SHARPER
IMAGE**

Wireless Speaker



User Guide

In the box



Wireless Speaker



User Guide



3.5mm
Auxiliary Cable



Micro USB
Charging Cable

Charging the Speaker

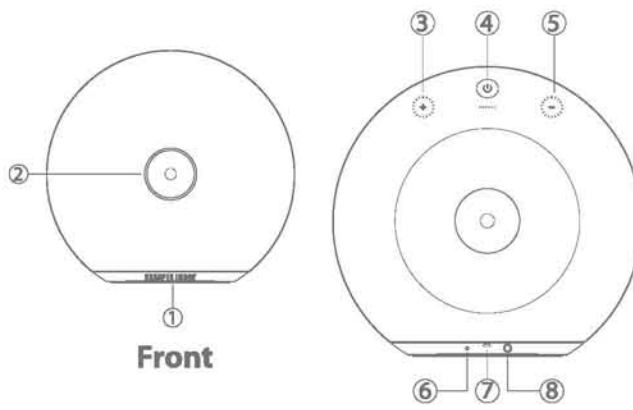
1. Attach the small end of the micro USB cable to the Wireless Speaker's DC5V Charging port on the back of the speaker.
2. Connect the larger end of the micro USB cable to your computer or USB charging device.
3. The Charging LED indicator will stay solid RED when charging and turn off when it is fully charged.
4. Remove the micro USB cable when charging is complete.



Computer Micro USB Charging Cable Micro USB Charging Port

i Make sure you charge the speaker for at least 3 to 4 hours before using it for the first time.

Location of Controls



- (Front)**
1. Sharper Image Logo light
 2. Circle LED Indicator

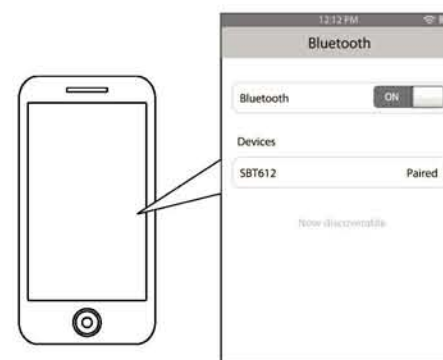
- (Back)**
3. [⏮] button: Increase volume
 4. [⏸] button: Long press - Power ON/OFF
Quick press - Play/pause music,
Answer incoming phone call
 5. [⏭] button: Decrease volume
 6. Charging LED Indicator
 7. DC5V Charging port
 8. Aux-in jack

Pairing the speaker

1. Turn the M100 ON by long pressing the [⏸] button.
2. A tone will be heard indicating the speaker is powered on and the Circle LED indicator will flash QUICKLY. The M100 is now ready to be paired to your Bluetooth device.
3. Keep the speaker and your Bluetooth-enabled device within 3 feet of each other during the pairing process.

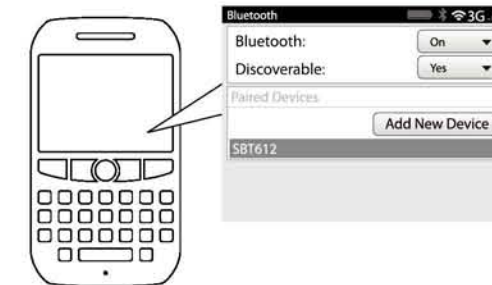
NOTE: If there are no paired devices in range when the speaker is turned on, it will go into pairing mode automatically. If a paired device is in range, the speaker will connect to it automatically.

- On an iPhone**
- Go to SETTINGS > BLUETOOTH (Make sure Bluetooth is turned ON)

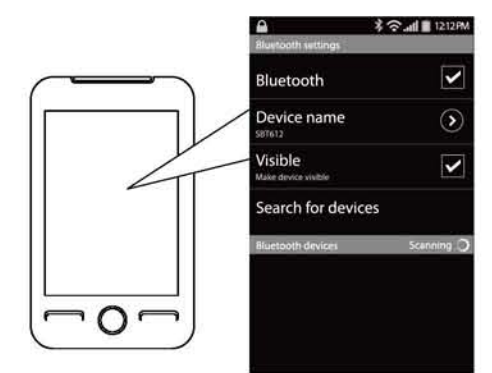


Pairing the speaker (cont'd)

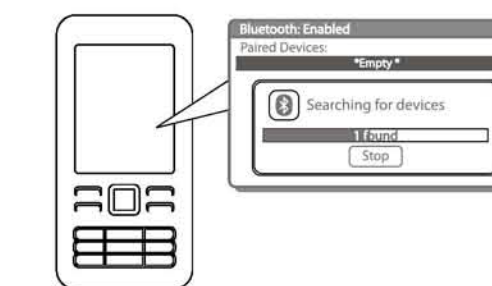
- On a Blackberry**
- Go to SETTINGS/OPTIONS > BLUETOOTH
 - Enable BLUETOOTH



- On an Android Phone**
- Go to SETTINGS > BLUETOOTH > MENU Search for devices (Make sure Bluetooth is turned ON)



- On other Cell Phones/Devices**
- Review the instruction manual that came with your phone/device.



4. Set your mobile phone or other Bluetooth-enabled device to search for Bluetooth devices.
5. When your mobile phone (or other Bluetooth-enabled device) finds the Wireless Speaker, select M100 from the list of found devices.
6. If required, enter the password 0000. Select Yes or OK to pair the units.
7. After a successful pairing, a tone will be heard and the Circle LED Indicator will stay solid.

NOTE: If you would like to connect the speaker to another device, you must unpair the speaker from the currently paired device first. On your device's Bluetooth settings, select M100 then select "unpair" or "forget device." The speaker will return to pairing mode.

i The screenshots above are typical of many Bluetooth-enabled devices in the market today, and are used to assist in the explanation of the pairing process. Your Bluetooth-enabled device's interface and interaction with the speaker may differ slightly from the illustrations above.

BACK

Playing Music

Powering ON and OFF

- Turn the M100 ON by LONG pressing the [⏸] button. A series of tones will play, the Circle LED Indicator will begin to flash QUICKLY and the Sharper Image Logo Light will light up.
- To turn the M100 OFF, long press the [⏸] button. A series of tones will play and the Circle LED Indicator and Sharper Image Logo Light will turn off.

Playing Music

To enjoy wireless music on your Bluetooth speaker, make sure that the speaker is properly paired to your Bluetooth-enabled device. If you are pairing the device for the first time, please consult the "Pairing the Speaker" section of this user guide.

- QUICK press the [⏮] button to pause music playback.
- QUICK press the [⏮] button again to resume music playback.

Skipping Songs

Skipping songs is controlled through your connected Bluetooth device's media player controls.

Adjusting Volume

- QUICK press the [⏮] button to decrease volume.
- QUICK press the [⏭] button to increase volume.

Making Phone Calls

When there is an incoming phone call, any music playback will be automatically paused and the Circle LED indicator will flash QUICKLY.

- To answer an incoming phone call, QUICK press the [⏸] button.
- To end a call, QUICK press the [⏸] button.
- To decrease in-call volume, QUICK press the [⏮] button.
- To increase in-call volume, QUICK press the [⏭] button.

Using as a Wired Speaker

1. Connect one end of the 3.5mm aux cable to the aux-in jack on the back of the speaker. A tone will be heard and the Circle LED Indicator will flash SLOWLY.
2. Connect the other end of the 3.5mm aux cable to the headphone jack on your smartphone, tablet, or MP3 player.
3. Open a media player and select a song from your playlist.
4. Use the controls on the connected device to control media playback.
5. Use [⏮] and [⏭] or the controls on the connected device to adjust volume.

Note: Connecting the 3.5mm aux cable to the aux-in jack will immediately disconnect any paired Bluetooth devices.

Troubleshooting Tips

i I can pair the LED Lights Speaker with my Bluetooth device, but I cannot hear any music.

1. Make sure your Bluetooth device supports A2DP profile.
2. Turn up the volume on your Bluetooth device.
3. You may have to unpair the speaker, then re-pair to your device.

i My Bluetooth device is not able to pair with the LED Lights Speaker.

1. Make sure the speaker is turned ON before beginning the pairing process.
2. Keep the speaker and Bluetooth-enabled device within 3 feet of each other during the pairing process.
3. Check that YOUR device's Bluetooth feature is turned ON.
4. Try repeating the pairing process. Consult the "Pairing the Speaker" section of this manual.
5. Make sure the speaker is charged.

i I cannot get the speaker into pairing mode.

1. Make sure the speaker is turned ON before beginning the pairing process.
2. Make sure that your device's Bluetooth feature is powered ON and ready to search for Bluetooth devices.
3. Check that the speaker is charged.

Legal information

READ CAREFULLY AND KEEP THIS MANUAL

Caution: Any changes or modifications not expressly approved could void the user's authority to operate the equipment.

This device complies with Part 15 of the FCC Rules. Operation is subject to the following two conditions:
(1) This device may not cause harmful interference, and
(2) this device must accept any interference received, including interference that may cause undesired operation.

Note: This equipment has been tested and found to comply with the limits for a Class B digital device, pursuant to part 15 of the FCC Rules. These limits are designed to provide reasonable protection against harmful interference in a residential installation. This equipment generates, uses and can radiate radio frequency energy and, if not installed and used in accordance with the instructions, may cause harmful interference to radio communications. However, there is no guarantee that interference will not occur in a particular installation. If this equipment does cause harmful interference to radio or television reception, which can be determined by turning the equipment off and on, the user is encouraged to try to correct the interference by one or more of the following measures:

- Reorient or relocate the receiving antenna.
- Increase the separation between the equipment and receiver.
- Connect the equipment into an outlet on a circuit different from that to which the receiver is connected.
- Consult the dealer or an experienced radio/TV technician for help.

Limited Warranty

90 Days Limited Warranty
In the unlikely event that this product is defective, or does not perform properly, you may within ninety (90) days from your original date of purchase return it to the authorized service center for repair or exchange.

TO OBTAIN WARRANTY SERVICE:

- Call the Customer Support number located below, or go to our website portal to receive an SRO number.
- Provide proof of the date of purchase within the package (dated bill of sale).
- Prepay all shipping costs to the authorized service center, and remember to insure your return.
- Include a return shipping address (no P.O. Boxes), a telephone contact number, and the defective unit within the package.
- Describe the defect or reason you are returning the product.

Your product will be repaired or replaced, at our option, for the same or similar model of equal value if examination by the service center determines this product is defective. Products received damaged as a result of shipping will require you to file a claim with the carrier.

The shipping address of the authorized service center is:

Southern Telecom, Inc.
Attention: Customer Service (2nd Floor)
14-C 53rd Street
Brooklyn, NY 11232

Should you have any questions or problems concerning this product, please contact our customer service department at:

Customer Support:
Phone: 1-877-768-8481
Monday-Friday 8AM-10PM(EST)

www.southern telecom.com

Click on "Product Support"

Warranty service not provided

This warranty does not cover damage resulting from accident, misuse, abuse, improper installation or operation, lack of reasonable care, and unauthorized modification. This warranty is voided in the event any unauthorized person opens, alters or repairs this product. All products being returned to the authorized service center for repair must be suitably packaged.

Limitation of Warranty:

• THE WARRANTY STATED ABOVE IS THE ONLY WARRANTY APPLICABLE TO THIS PRODUCT. ALL OTHER WARRANTIES, EXPRESS OR IMPLIED (INCLUDING ALL IMPLIED WARRANTIES OF MERCHANTABILITY OR FITNESS FOR A PARTICULAR PURPOSE) ARE HEREBY DISCLAIMED. NO VERBAL OR WRITTEN INFORMATION GIVEN BY AIT, INC. ITS AGENTS, OR EMPLOYEES SHALL CREATE A WARRANTY OR IN ANY WAY INCREASE THE SCOPE OF THIS WARRANTY.

• REPAIR OR REPLACEMENT AS PROVIDED UNDER THIS WARRANTY IS THE EXCLUSIVE REMEDY OF THE CONSUMER. AIT, INC. SHALL NOT BE LIABLE FOR INCIDENTAL OR CONSEQUENTIAL DAMAGES RESULTING FROM THE USE OF THIS PRODUCT OR ARISING OUT OF ANY BREACH OF ANY EXPRESS OR IMPLIED WARRANTY ON THIS PRODUCT. THIS DISCLAIMER OF WARRANTIES AND LIMITED WARRANTY ARE GOVERNED BY THE LAWS OF THE STATE OF NEW YORK. EXCEPT TO THE EXTENT PROHIBITED BY APPLICABLE LAW, ANY IMPLIED WARRANTY OF MERCHANTABILITY OR FITNESS FOR A PARTICULAR PURPOSE ON THIS PRODUCT IS LIMITED TO THE APPLICABLE WARRANTY PERIOD SET FORTH ABOVE.

Some states do not allow the exclusion nor limitation of incidental or consequential damages, or limitations on how long an implied warranty lasts so the above limitations on exclusions may not apply to you. This warranty gives you specific legal rights, and you also may have other rights that vary from state to state.



Sharper Image® name and logo are registered trademarks. Manufactured and marketed by Southern Telecom under license. © Sharper Image. All Rights Reserved.

SHARPER IMAGE

FCC Caution:

Any Changes or modifications not expressly approved by the party responsible for compliance could void the user's authority to operate the equipment.

This device complies with part 15 of the FCC Rules. Operation is subject to the following two conditions: (1) This device may not cause harmful interference, and (2) this device must accept any interference received, including interference that may cause undesired operation.

FCC Radiation Exposure Statement:

This equipment complies with FCC radiation exposure limits set forth for an uncontrolled environment .This equipment should be installed and operated with minimum distance 20cm between the radiator& your body.

This transmitter must not be co-located or operating in conjunction with any other antenna or transmitters