



Caution: Any changes or modifications not expressly approved could void the user's authority to operate the equipment.

FCC Part 15:
This device complies with Part 15 of the FCC Rules. Operation is subject to the following two conditions:
(1) This device may not cause harmful interference, and
(2) this device must accept any interference received, including interference that may cause undesired operation.

Note: This equipment has been tested and found to comply with the limits for a Class B digital device, pursuant to part 15 of the FCC Rules. These limits are designed to provide reasonable protection against harmful interference in a residential installation. This equipment generates, uses and can radiate radio frequency energy and, if not installed and used in accordance with the instructions, may cause harmful interference to radio communications. However, there is no guarantee that interference will not occur in a particular installation. If this equipment does cause harmful interference to radio or television reception, which can be determined by turning the equipment off and on, the user is encouraged to try to correct the interference by one or more of the following measures:

- Reorient or relocate the receiving antenna.
- Increase the separation between the equipment and receiver.
- Connect the equipment into an outlet on a circuit different from that to which the receiver is connected.
- Consult the dealer or an experienced radio/TV technician for help.

PLR IP Holdings, LLC, its licensees and affiliates, fully support all electronic waste initiatives. As responsible stewards of the environment, and to avoid violating established laws, you should properly dispose of this product in compliance with all applicable regulations, directives or other governments in the area where you reside. Please check with local authorities or the retailer where you purchased this product to determine a location where you can appropriately dispose of the product.



USING THE EARBUDS

Powering ON/OFF

- To turn the headphones ON, long press the [▶||] button.
- To turn the earbuds OFF, long press the [▶||] button.

Adjusting Volume

- Long press the [▶||] button to increase volume. A tone will be heard if you attempt to increase the volume past maximum level.
- Long press the [◀◀] button to decrease volume.

Answering/Ending Phone Calls

- To answer an incoming phone call, quick press the [▶||] button.
- To end a phone call, quick press the [▶||] button, again.

USING THE EARBUDS (cont'd)

Playing Media

To enjoy music on your headphones, make sure you are paired to a Bluetooth-enabled device. Once paired, you can control media playback and volume adjustment with the controls on your paired device on with the headphones.

Playing/Pausing Media

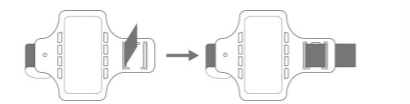
- To pause media playback, press the [▶||] button.
- To resume media playback, press the [▶||] button, again.

Skipping Tracks

- To skip to the previous track, quick press the [◀◀] button.
- To skip to the next track, quick press the [▶▶] button.

USING THE ARMBAND

Remove any protective case on your phone and slide into the opening on the back of the armband.



Slide the velcro strap up through the A slot on the armband and then back down through the B slot. Put your arm through the armband and adjust, then velcro to secure.

NOTE: The armband will fit most 5" phones.

Using the Armband Lights

- Press the [☺] button on the arm band to cycle through the armband LED modes.

WARRANTY

This product as supplied and distributed new by AIT, Inc. ("AIT") to the original consumer purchaser is warranted by AIT against defects in material and workmanship for a period of one year from your date of purchase ("Warranty"). In the unlikely event that this product is defective, or does not perform properly, you may within one year from your original date of purchase return it to the authorized service center for repair or exchange.

TO OBTAIN WARRANTY SERVICE:

- Call the Customer Support number located below, or go to our website portal to receive an SRD number.
- Provide proof of the date of purchase within the package (dated bill of sale).
- Prepay all shipping costs to the authorized service center, and remember to insure your return.
- Include a return shipping address (no P.O. Boxes), a telephone contact number, and the defective unit within the package.
- Describe the defect or reason you are returning the product.

Your product will be repaired or replaced, at our option, for the same or similar model of equal value if examination by the service center determines this product is defective. Products received damaged as a result of shipping, will require you to file a claim with the carrier.

The shipping address of the authorized service center is:

AIT, Inc.
ATTN: Customer Service (2nd Floor)
14-C 53rd Street
Brooklyn, NY 11232

IN NO EVENT WILL AIT, ITS MANUFACTURERS, DISTRIBUTORS OR PLR IP HOLDINGS, LLC BE LIABLE FOR ANY INCIDENTAL, DIRECT, INDIRECT, SPECIAL, PUNITIVE OR CONSEQUENTIAL DAMAGES (SUCH AS, BUT NOT LIMITED TO, DAMAGES FOR LOSS OF PROFITS, BUSINESS, SAVINGS, DATA OR RECORDS) RELATED TO THIS PRODUCT, EXCEPT AS STATED HEREIN. NO OTHER WARRANTIES SHALL APPLY.

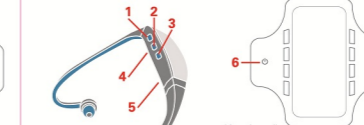


IN THE BOX



LOCATION OF CONTROLS

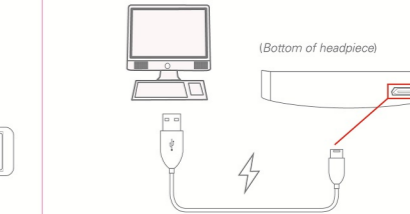
1. [◀◀] Button:
Long press - Decrease volume
Quick press - Skip to previous track
2. [▶||] Button:
Long press - Power ON/OFF
Quick Press - Play/pause, Answer/end phone call
3. [▶▶] Button:
Long press - Increase volume
Quick press - Skip to next track
4. LED Indicator (Inside ring of headpiece)
5. Micro USB Charging Port (Underside of headpiece)



6. [☺] Button - Turn ON/OFF LEDs
7. Key Pouch

CHARGING THE EARBUDS

To charge the earbuds, attach the small end of the micro USB cable to the micro USB charging port. Attach the large end to a USB adaptor, battery pack, or USB port on a computer. The LED indicator will turn RED while charging and turn blue when charged.



i Make sure you charge the earbuds for at least 2 to 3 hours before using it for the first time.

PAIRING THE EARBUDS

1. Long press the [▶||] button. The LED indicator beneath it will quickly flash RED and BLUE.
2. Set your Bluetooth-enabled device to search for Bluetooth devices. When the Bluetooth-enabled device finds the speaker, select "PBT97" from the list of found devices.
3. After a successful pairing, a tone will be heard indicating that the device is paired and the LED indicator will slowly flash BLUE.

On an Apple or Android

- Go to **SETTINGS > BLUETOOTH** (Make sure Bluetooth is turned ON)

i The screenshots above are typical of many Bluetooth-enabled devices in the market today and are used to assist in the explanation of the pairing process. Your Bluetooth-enabled device's interface and interaction with the earbuds may differ slightly from the illustrations above.

