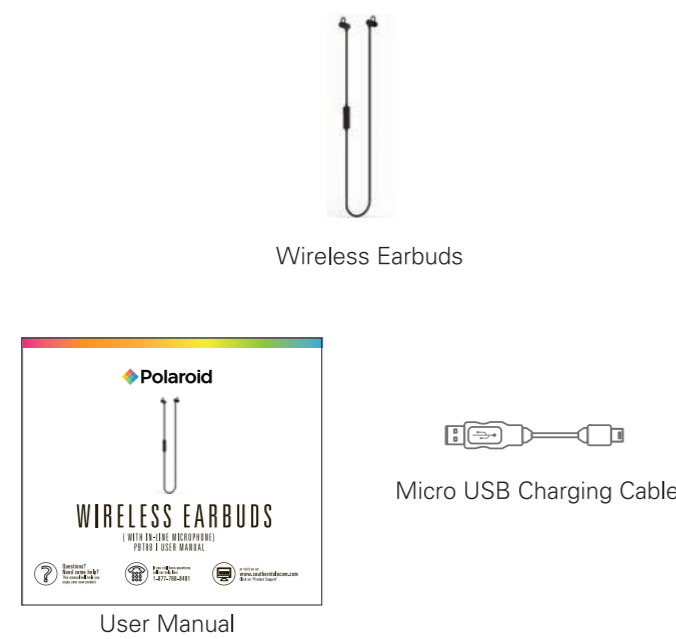




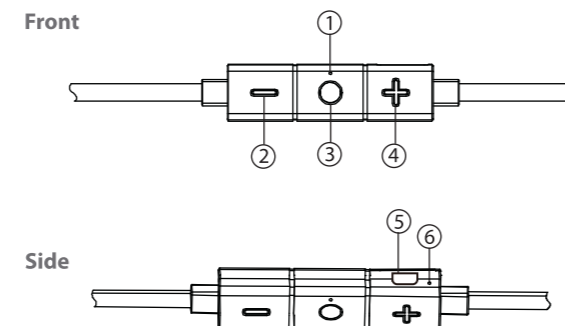
WIRELESS EARBUDS
{ WITH IN-LINE MICROPHONE }
PBT88 | USER MANUAL

- Questions? Need some help? This manual will help you enjoy your new product.
- If you still have questions, call our help line: 1-877-768-8481
- or visit us at: www.southern telecom.com Click on "Product Support"

IN THE BOX



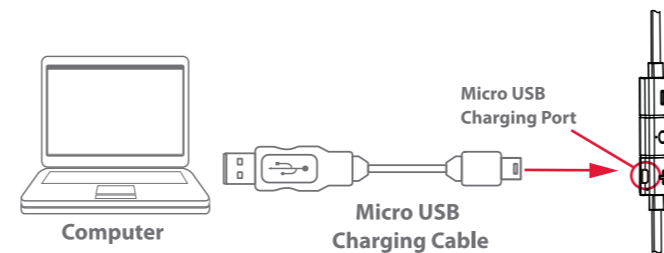
LOCATION OF CONTROLS



- LED indicator light
- [-] button:**
 - Long press = decrease volume
 - Quick press = skip to previous song
- [O] button:**
 - Long press = power ON/OFF
 - Quick press = play/pause; answer/end call
- [+] button:**
 - Long press = increase volume
 - Quick press = skip to next song
- Micro USB charging port
- Microphone

CHARGING THE EARBUDS

- Plug the small end of the Micro USB charging cable into the Micro USB charging port on the earbuds.
- Plug the large end of the Micro USB charging cable into a USB port on your computer or other USB charging device.
- The LED charging indicator light is RED when charging. It will turn BLUE when the earbuds are fully charged.



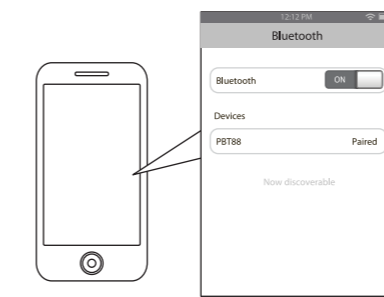
i Make sure you charge the earbuds for at least 3 to 4 hours before using it for the first time.

PAIRING THE EARBUDS

- Long press the **[O]** button until a tone is heard and the LED Bluetooth indicator light alternately flashes RED and BLUE.
- Keep the earbuds and Bluetooth enabled device within 3 feet of each other during the pairing process.
- Set your Bluetooth enabled device to search for Bluetooth devices.

i If there are no paired devices in range when the earbuds are turned on, it will go into pairing mode automatically. If a paired device is in range, the earbuds will connect to it automatically.

- On an iPhone**
- Go to **SETTINGS > BLUETOOTH** (Make sure Bluetooth is turned ON)



TROUBLESHOOTING (cont'd)

? I cannot get the Wireless Earbuds into pairing mode.

- Long press the **[O]** button until a tone is heard and the LED Bluetooth indicator light alternately flashes RED and BLUE.
- The earbuds are now in pairing mode.

? My Bluetooth device is not able to pair with the Wireless Earbuds.

- Long press the **[O]** button until a tone is heard and the LED Bluetooth indicator light alternately flashes RED and BLUE.
- Keep your Wireless Earbuds and Bluetooth enabled device within three feet of each other during the pairing process.
- Check that YOUR device's Bluetooth feature is turned ON.
- Try repeating the pairing process. See "PAIRING THE EARBUDS."
- Make sure the earbuds are fully charged.



USING THE EARBUDS

- Powering ON/OFF**
- Long press the **[O]** button to turn ON and OFF.
 - Check that your Bluetooth features are turned ON. If you have already paired the earbuds with a Bluetooth enabled device, it will automatically connect.
 - If you are using the earbuds for the first time, go to the "PAIRING THE EARBUDS" section of this User Manual, and pair the earbuds to your desired Bluetooth device.

- Adjusting the volume**
- Long press the **[+]** button to increase the volume.
 - Long press the **[-]** button to decrease the volume.

- Answering/ending a call**
- To answer a call, quick press the **[O]** button.
 - To end a call, quick press the **[O]** button.

PLAYING MUSIC

To enjoy listening to music wirelessly on your Wireless Earbuds, make sure you are connected to a Bluetooth enabled device (see "PAIRING THE EARBUDS"). Once connected, press PLAY on your Bluetooth device. When playback has begun, control the music and volume with your connected device or the buttons on the earbuds.

- Play/Pause**
- Quick press the **[O]** button to pause the music.
 - To resume music playback, quick press the **[O]** button again.

- Skipping Songs**
- Quick press the **[+]** button to skip to the next song.
 - Quick press the **[-]** button to skip to the previous song.

- Adjusting the volume**
- Long press the **[+]** button to increase the volume.
 - Long press the **[-]** button to decrease the volume.

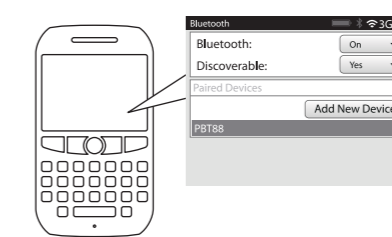
TROUBLESHOOTING

? I can pair the Wireless Earbuds with my Bluetooth device, but I cannot hear any music.

- Make sure your Bluetooth device supports A2DP profile.
- Turn up the volume on your Bluetooth device.
- You may have to unpair the earbuds, then re-pair to your device.

PAIRING THE EARBUDS (cont'd)

- On a BlackBerry**
- Go to **SETTINGS/OPTIONS > BLUETOOTH**
 - Enable **BLUETOOTH**



- On an Android Phone**
- Go to **SETTINGS > BLUETOOTH > MENU > Search for devices** (make sure Bluetooth is turned ON)



WARRANTY

This product as supplied and distributed new by AIT, Inc. ("AIT") to the original consumer purchaser is warranted by AIT against defects in material and workmanship for a period of one year from your date of purchase ("Warranty"). In the unlikely event that this product is defective, or does not perform properly, you may within one year from your original date of purchase return it to the authorized service center for repair or exchange.

- TO OBTAIN WARRANTY SERVICE:**
- Call the Customer Support number located below, or go to our website portal to receive an SRO number.
 - Provide proof of the date of purchase within the package (Dated bill of sale).
 - Prepay all shipping costs to the authorized service center, and remember to insure your return.
 - Include a return shipping address (no P.O. Boxes), a telephone contact number, and the defective unit within the package.
 - Describe the defect or reason you are returning the product.

Your product will be repaired or replaced, at our option, for the same or similar model of equal value if examination by the service center determines this product is defective. Products received damaged as a result of shipping, will require you to file a claim with the carrier.

The shipping address of the authorized service center is:

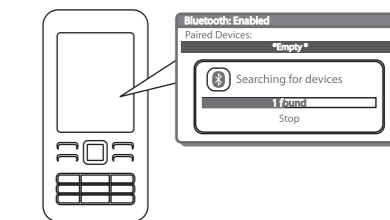
AIT, Inc.
ATTN: Customer Service (2nd Floor)
14-C 53rd Street
Brooklyn, NY 11232

IN NO EVENT WILL AIT, ITS MANUFACTURERS, DISTRIBUTORS OR PLR IP HOLDINGS, LLC BE LIABLE FOR ANY INCIDENTAL, DIRECT INDIRECT, SPECIAL, PUNITIVE OR CONSEQUENTIAL DAMAGES (SUCH AS, BUT NOT LIMITED TO, DAMAGES FOR LOSS OF PROFITS, BUSINESS, SAVINGS, DATA OR RECORDS) RELATED TO THIS PRODUCT, EXCEPT AS STATED HEREIN. NO OTHER WARRANTIES SHALL APPLY.

- Questions? Need some help? This manual will help you enjoy your new product.
- If you still have questions, call our help line: 1-877-768-8481
- or visit us at: www.southern telecom.com Click on "Product Support"

PAIRING THE EARBUDS (cont'd)

- On other Cell Phones/Devices**
- Review the instruction manual that came with your phone/device.



- When the Bluetooth enabled device finds the earbuds, select "PBT88" from the list of found devices.
- If required, enter the password 0000. Select OK or Yes to pair the two units.
- After a successful registration, a tone will be heard and the LED Bluetooth indicator light will flash BLUE twice every few seconds.

NOTE: If you would like to connect the earbuds to another device, you must unpair them from the currently paired device first. In your device's Bluetooth settings, select "PBT88", then select "unpair." When the earbuds have been unpaired, they automatically go into pairing mode again.

i The screenshots above are typical of many Bluetooth enabled devices in the market today, and are used to assist in the explanation of the pairing process. Your Bluetooth enabled device's interface and interaction with the Wireless Earbuds may differ slightly from the illustrations shown.

FCC Caution:

Any changes or modifications not expressly approved by the party responsible for compliance could void the user's authority to operate the equipment.

This device complies with part 15 of the FCC rules. Operation is subject to the following two conditions: (1) This device may not cause harmful interference, and (2) this device must accept any interference received, including interference that may cause undesired operation.

This equipment complies with FCC radiation exposure limits set forth for an uncontrolled environment.



PLR IP Holdings, LLC, its licensees and affiliates, fully support all electronic waste initiatives. As responsible stewards of the environment, and to avoid violating established laws, you should properly dispose of this product in accordance with all applicable regulations, directives or other governments in the area where you reside. Please check with local authorities or the retailer where you purchased this product to determine a location where you can appropriately dispose of the product.

Responsible packaging, responsibly sourcing. The Polaroid Classic Border and Polaroid Cube Spectrum Range are you know you've purchased a product that exemplifies the best qualities of our brand and that contribute to our rich heritage of quality and innovation.