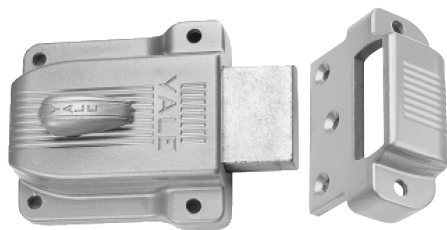




Auxiliary Locks



**Deadbolt
Single Cylinder
112**

Function

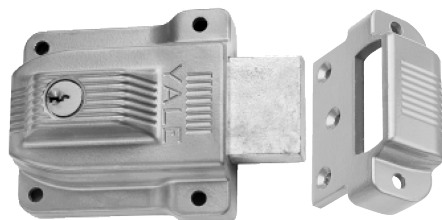
Outside: Furnished standard with 5-pin rim cylinder 1109E. Inside: 180° turn of the thumbturn throws or retracts deadbolt. Also available with flat strike, model no. 112F (for outswinging doors).

Stocking Part #'s

- 112
- 112F

Specifications

- Backset 2-3/8" (60)
- Material Zinc Alloy
- Springbolt Length 1-1/8" (29)
- Cylinder Yale® Brass 5-pin with anti-pick mushroom drivers 1109E
- Case Finishes Sprayed Brass
- Cylinder Finish Brass
- 2 Keys RB8
- Door Thickness 1-1/4" to 2-1/4" (32-57)



**Deadbolt
Double Cylinder
112 1/4**

Function

Outside: Furnished standard with 5-pin rim cylinder 1109E. Inside: Turning the key throws or retracts the deadbolt. Also available with flat strike, model no. 112-1/4F (for outswinging doors).

Stocking Part #'s

- 112 1/4
- 112F 1/4

Specifications

- Backset 2-3/8" (60)
- Material Zinc alloy
- Deadbolt Length 1-1/8" (29)
- Cylinder (Outside) Yale® Brass 5-pin with anti-pick mushroom drivers 1109E
- Cylinder (Inside) Fixed 3-pin Brass cylinder. No alternatives.
- Case Finishes Sprayed Brass
- Cylinder Finish Brass
- 2 Keys RB8
- Door Thickness 1-1/4" to 2-1/4" (32-57)



**Jimmy Proof
Single Cylinder
197**

Function

Outside: Furnished standard with 5-pin rim cylinder 1109E. Inside: 90° turn of the thumbturn locks or unlocks deadbolt. Also available with flat strike, model no. 197F (for outswinging doors).

Stocking Part #'s

- 197
- 197F

- Backset 2-3/8" (60)
- Material Zinc Alloy
- Deadbolt Length N/A
- Reversible Latchbolt N/A
- Cylinder Yale® Brass 5-pin with anti-pick mushroom drivers 1109E
- Case Finishes Sprayed Brass
- Cylinder Finish Brass
- 2 Keys RB8
- Door Thickness 1-1/4" to 2-1/4" (32-57)



Auxiliary Locks



**Jimmy Proof
Double Cylinder
197 1/4**

Function

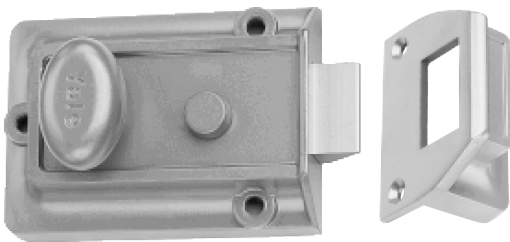
Outside: Furnished standard with 5-pin rim cylinder 1109E. Inside: Key locks or unlocks deadbolt. Also available with flat strike, model no. 197-1/4F (for outswinging doors).

Specifications

- Backset 2-3/8" (60)
- Material Zinc Alloy
- Deadbolt Length N/A
- Reversible Latchbolt N/A
- Cylinder (Outside) Yale® Brass 5-pin with anti-pick mushroom drivers 1109E
- Cylinder (Inside) Fixed 3-pin Brass cylinder. No alternatives.
- Case Finishes Sprayed Bronze
- Cylinder Finish Brass
- 2 Keys RB8
- Door Thickness 1-1/4" to 2-1/4" (32-57)

Stocking Part #'s

- 197 1/4
- 197F 1/4



**Security
Latchlock
80**

Function

Outside: Furnished standard with 5-pin rim cylinder 1109E. Inside: Bolt can be deadlocked or held back by slide button, rendering the lock inoperable by key or knob.

Specifications

- Backset 2-3/8" (60)
- Material Zinc Alloy
- Springbolt Length 1/2" (13)
- Reversible Latchbolt Yes, order #8RB Strike
- Cylinder Yale® Brass 5-pin with anti-pick mushroom drivers 1109E
- Case Finishes Enameled Brasslux
- Cylinder Finish Brass
- 2 Keys RB8
- Door Thickness 1-1/4" to 2-1/4" (32-57)

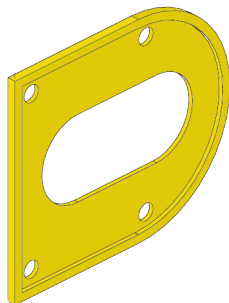
Stocking Part #'s

- 80

Parts



#8



#97



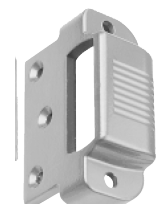
#197



#197F



#112F



#112



Door Closers



The 2300BC is a durable, economically priced door closer designed for commercial exterior and interior doors such as storefront and industrial applications.

Features:

- Spring sizes 2, 3, 4, 5
- Separate and independent valve for sweep speed and latch speed
- Adjustable backcheck
- Tri-packed (regular arm and top jamb mounting)
- 10-year limited warranty

Stocking Part #'s

- 2302BC-689 (SIZE 2)
- 2302BC-690 (SIZE 2)
- 2303BC-689 (SIZE 3)
- 2303BC-690 (SIZE 3)
- 2304BC-689 (SIZE 4)
- 2304BC-690 (SIZE 4)
- 2305BC-689 (SIZE 5)
- 2305BC-690 (SIZE 5)

COMPLIANCE STANDARDS

All 2300BC series closers are ANSI/BHMA A156.4, Grade 2. All Yale® series 2300BC closers with non-hold open arms are listed by Underwriters' Laboratories for labeled fire doors. This includes compliance to UL10C and UBC-72 (1997) for 3-hour assemblies. The product is manufactured in a certified ISO 9001 facility. These closers are also listed by New York City Board of Standards and Appeals; Materials and Equipment Acceptance Division (41-60-SM).

Discountinued
 When Out

Stocking Part #'s

- 51BF-689 (SIZE 3-6 Barrier Free)
- 51BF-690 (SIZE 3-6 Barrier Free)
- 52BC-689 (SIZE 2)
- 52BC-690 (SIZE 2)
- 53BC-689 (SIZE 3)
- 53BC-690 (SIZE 3)
- 54BC-689 (SIZE 4)
- 54BC-690 (SIZE 4)
- 55BC-689 (SIZE 5)
- 55BC-690 (SIZE 5)
- 154BC-689 (SIZE 4 Hold Open)
- 154BC-690 (SIZE 4 Hold Open)



Yale® 50 Series Closers are designed to fit almost any application and are the choice of engineers worldwide. They are ideal for use with aluminum store front doors and frames, yet they also complement wood or metal door installations.

Non-handed, the 50 series is available as sized or multi-sized units.

Features:

- Non-handed
- Tri-packed (regular arm, top jamb and parallel arm installations)
- Rack-and-pinion design
- Cast aluminum body
- 1-3/8" (35mm) diameter piston
- 5/8" (16mm) diameter pinion journals
- Standard, separate and independent, latch, sweep and backcheck intensity valves
- 2-7/8" (73mm) projection
- All standard arm applications allow doors to swing 180°, conditions permitting
- 10-year limited warranty
- Staked valves

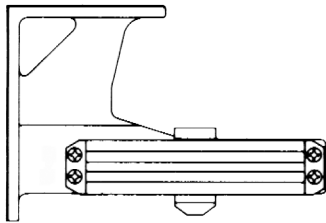
COMPLIANCE STANDARDS

The series 51BF door closers are designed to comply with requirements of the Americans with Disabilities Act (A.D.A.) and ANSI standard A117.1. All series 50BC/51(BF) are ANSI/BHMA A156.4, Grade 1 certified.

All Yale® series 50BC/51(BF) closers with non-hold open arms are listed by Underwriters' Laboratories for labeled fire doors. This includes compliance to UL10C and UBC-72 (1997) for 3-hour assemblies. These products are manufactured in a certified ISO 9001 facility. These closers are also listed by New York City Materials and Equipment Acceptance Division.



Door Closers Parts

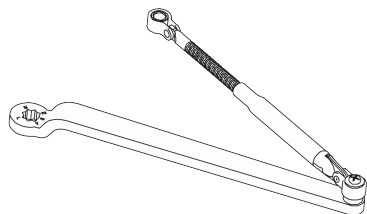


**Mounting Opposite Hinge Side -
#2350 Corner Bracket For 50 Series**

Stocking Part #'s

For use where it is desired to mount the closer regular arm on the opposite to hinge side of the door. Can also be used to clear an overhead door holder.

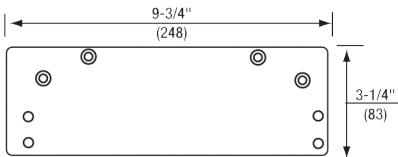
- 2350-689
- 2350-690



Arm for 50 Series

Stocking Part #'s

- 400-1-689 (Regular arm)
- 400-1-690 (Regular arm)
- 400-3-689 (Hold open arm)
- 400-3-690 (Hold open arm)

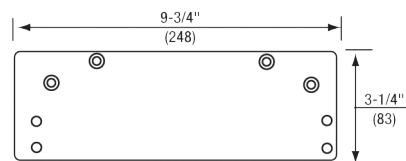


**Low Ceiling Clearance - Overhead Door
Holder - #587 Drop Plate For 50 Series**

Stocking Part #'s

For use where the ceiling clearance is between 1-3/4" and 2-5/8" (44mm and 67mm). Or for use where an overhead door holder prevents normal top jamb mounting. This places the centerline of the arm mounting screws at 2-1/8" (54mm) from the top of door.

- 587-689
- 587-690

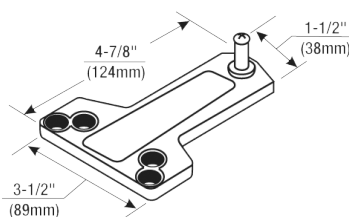


**Top Jamb - #2388 Drop Plate
For 50 & 2300 Series**

Stocking Part #'s

For use where there is insufficient ceiling clearance or the frame face is too narrow to mount a closer body. This drop plate can be used to mount a closer on a frame face as narrow as 1-1/2" (38mm).

- 2388-689
- 2388-690



**Standard Installation - #289A
Soffit Plate For 50 & 2300 Series**

Stocking Part #'s

This soffit plate is supplied standard with parallel arm closers. It can be mounted where the frame soffit is as narrow as 1" (25 mm).

- 289A-689
- 289A-690



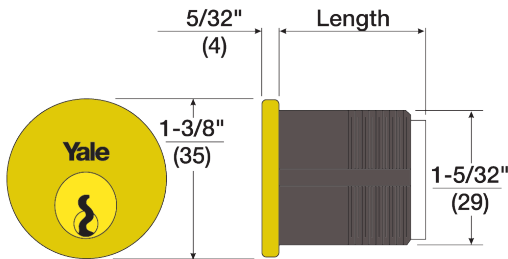
Key Blanks and Cylinders

Stocking Keyblanks

- | | | | | | |
|---------------|------------|-------------|------------|-------------|-----------|
| • RB1019-B10L | • RN11-GB | • RN11-JMK | • RN11-SMK | • RN11-VA | • RN8-GG |
| • RB1019-FL7 | • RN11-GC | • RN11-PARA | • RN11-TA | • RN11-VG | • RN8-GH |
| • RB1019-F7R | • RN11-GD | • RN11-SA | • RN11-TB | • RN12-PARA | • RN8-GMK |
| • RB1019-F8L | • RN11-GE | • RN11-SB | • RN11-TC | • RN13-PARA | |
| • RB1019-F8R | • RN11-GF | • RN11-SC | • RN11-TD | • RN8-GA | |
| • RB1019-F9L | • RN11-GG | • RN11-SD | • RN11-TE | • RN8-GB | |
| • RB1019-F9R | • RN11-GH | • RN11-SE | • RN11-TF | • RN8-GC | |
| • RB8-PARA | • RN11-GJ | • RN11-SF | • RN11-TG | • RN8-GD | |
| • RN10-JMK | • RN11-GMK | • RN11-SG | • RN11-TH | • RN8-GE | |
| • RN11-GA | • RN11-GST | • RN11-SH | • RN11-TMK | • RN8-GF | |



Mortise Cylinders



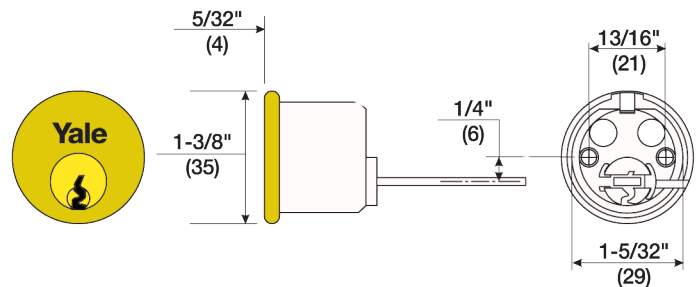
Stocking Part #'s

- 1152GA-1"-US4 & US26D
- 1152GA-1-1/8"-US4 & US26D
- 1152GA-1-1/4"-US4 & US26D

- 1152GB-1"-US4 & US26D
- 1152GB-1-1/8"-US4 & US26D
- 1152GB-1-1/4"-US4 & US26D

- 1152PARA-1"-US4 & US26D
- 1152PARA-1-1/8"-US4 & US26D
- 1152PARA-1-1/4"-US4 & US26D

Rim Cylinders



Stocking Part #'s

- 1109GA-US4 & US26D
- 1109GB-US4 & US26D

- 1109PARA-US4 & US26D