



TRIANGLE BRASS MANUFACTURING COMPANY, INC.

**LOOK** for New Products on **N Index-10, 11, & 12**

---



**CuVerro**<sup>TM</sup>  
*Antimicrobial Copper Surfaces*

**urbān**

**Fine Builders Hardware**

1351 Rocky Point Drive  
Oceanside, CA 92056  
Telephone (323) 262-4191  
Fax (323) 264-7214 or (800) 637-TRIM (8746)  
Or For Quotes – Toll Free Fax (877) 786-8387  
Online Ordering available at [www.trimcohardware.com](http://www.trimcohardware.com)

**fOCAL**

© 2016, Triangle Brass Manufacturing Company, All rights reserved.





# INDEX of FACTORY REPS by STATE

<u>State</u>	<u>Sales Agencies</u>	<u>Factory Contact</u>	<u>EXT</u>
Alabama	Belcher South Marketing, Inc.	Jorge Castellanos	115
Alaska	ASR Sales	Daniel Ayala	124
Arizona	The Clark Agency	Humberto Mata Jr.	100
Arkansas	Southwest Architectural Sales	Daniel Ayala	124
California, Northern	ASR Sales	Daniel Ayala	124
California, Southern	Security Hardware, Inc.	Daniel Ayala	124
Colorado	J. L. Jones Group	Humberto Mata Jr.	100
Connecticut	Bullard Associates	Jorge Castellanos	115
Delaware	Jester Associates	Jorge Castellanos	115
Florida	JP Nunn Sales Group, Inc.	Jorge Castellanos	115
Florida-Pan-handle	Mayo Associates	Jorge Castellanos	115
Georgia	Mayo Associates	Jorge Castellanos	115
Hawaii	J & B Marketing Co	Daniel Ayala	124
Idaho, Northern	Northwest Hdwe. Consultant	Humberto Mata Jr.	100
Idaho, Southern	J. L. Jones Group	Humberto Mata Jr.	100
Illinois-Northern	Life Safety Hardware Consult.	Jorge Castellanos	115
Illinois-Southern	D.L. Neuner	Jorge Castellanos	115
Indiana	CC Hardware Consultants	Jorge Castellanos	115
Iowa	Life Safety Hardware Consult.	Daniel Ayala	124
Kansas	D.L. Neuner	Daniel Ayala	124
Kentucky	CC Hardware Consultants	Jorge Castellanos	115
Louisiana	Southwest Architectural Sales	Daniel Ayala	124
Maine	Bullard Associates	Jorge Castellanos	115
Maryland	Factory Direct	Jorge Castellanos	115
Massachusetts	Bullard Associates	Jorge Castellanos	115
Michigan	The Eisen Group	Jorge Castellanos	115
Minnesota	Life Safety Hardware Consult.	Humberto Mata Jr.	100
Mississippi	Southwest Architectural Sales	Jorge Castellanos	115
Missouri	D.L. Neuner	Daniel Ayala	124
Montana	Factory Direct	Humberto Mata Jr.	100
Nebraska	Life Safety Hardware Consult.	Daniel Ayala	124
Nevada	ASR Sales	Daniel Ayala	124
Nevada, Las Vegas	Security Hardware, Inc.	Daniel Ayala	124
New Hampshire	Bullard Associates	Jorge Castellanos	115
New Jersey, Northern	Greico Glezen Sales	Jorge Castellanos	115
New Jersey, Southern	Jester Associates	Jorge Castellanos	115
New Mexico	The Clark Agency	Humberto Mata Jr.	100
New York, Southern	Greico Glezen Sales	Jorge Castellanos	115
New York, Metro	Greico Glezen Sales	Jorge Castellanos	115

<u>State</u>	<u>Sales Agencies</u>	<u>Factory Contact</u>	<u>EXT</u>
New York, Northern	Anthony Mastroianni	Jorge Castellanos	115
North Carolina	Bruch Marketing	Jorge Castellanos	115
Ohio	Anthony Mastroianni	Jorge Castellanos	115
Oklahoma	Southwest Architectural Sales	Daniel Ayala	124
Oregon	Northwest Hdwe. Consultant	Humberto Mata Jr.	100
Pennsylvania, Western	Anthony Mastroianni	Jorge Castellanos	115
Pennsylvania, Eastern	Jester Associates	Jorge Castellanos	115
Rhode Island	Bullard Associates	Jorge Castellanos	115
South Carolina	Bruch Marketing	Jorge Castellanos	115
South Dakota	Life Safety Hardware Consult.	Terry Gomez	100
Tennessee-Western	CC Hardware Consultants	Jorge Castellanos	115
Tennessee-Eastern	Mayo Associates	Jorge Castellanos	115
Texas	Southwest Architectural Sales	Daniel Ayala	124
Utah	J. L. Jones Group		100
Vermont	Bullard Associates	Jorge Castellanos	115
Virginia	Factory Direct	Jorge Castellanos	115
Washington State	Northwest Hdwe. Consultant	Humberto Mata Jr.	100
Washington, DC	Factory Direct	Jorge Castellanos	115
West Virginia	CC Hardware Consultants	Jorge Castellanos	115
Wisconsin	Life Safety Hardware Consult.	Daniel Ayala	124
Wyoming	J. L. Jones Group	Humberto Mata Jr.	100



## INTERNATIONAL



Mexico	Don Tucker (International)	Daniel Ayala	124
Quebec, Canada	Les Agences Real Demers	Daniel Ayala	124
Canada, Western	TMC Sales Agency Northwest	Daniel Ayala	124
Europe	Don Tucker (International)	Daniel Ayala	124
Far East	Don Tucker (International)	Daniel Ayala	124
Central America	Don Tucker (International)	Daniel Ayala	124
South America	Don Tucker (International)	Daniel Ayala	124
Middle East	Don Tucker (International)	Daniel Ayala	124
Foundry Customers	Metal Concepts	Myrna Alcaraz	141

## CUSTOMER SERVICE TEAM MEMBERS

*For Service dial extension 110*

Daniel Ayala	Customer Service Rep	dayala@trimcohardware.com	124
Jorge Castellanos	Customer Service Rep	jcastellanos@trimcohardware.com	115
Myrna Alcaraz	Customer Svc/Product Tech	<u>malcaraz@trimcohardware.com</u>	141
Larry Squire	Product Tech/Special Quotes	<u>lsquire@trimcohardware.com</u>	156
Roberto Rivera	Global Solutions Services	rrivera@trimcohardware.com	144
Angeles Carrillo	Quote Requests (877-786-8387)	quotes@trimcohardware.com	112

The hardware shown on these pages are made with no compromise in quality, design or durability. Only first quality extrusions, sheet stock and castings are used. Careful matching, polishing, assembly and finishing result in a final product which we present with pride.

## INDEX by Product



### NEW PRODUCT ANNOUNCEMENTS

### N Index - 10,11, & 12

"Adjustre" Door Holder	F-8
Armor Plates	G-8
Back Plates	D-1
Cane Bolt	C-1
Closet Ball Catch	C-1
Concealed Door Pull	D-5
Cool Pulls	Focal A-2
Coordinators and Accessories	C-4, C-5
Crash Chain Stop	G-6
Cremone Bolt	C-8
Decal Signage	G-3
Door Grille – Classic	B-2
Door Guards	G-6
Door Pulls	B-1 – B-3, B-5, B-6, B-8, D-2 – D-4, D-6 – D-12, E-1
Door Pull – Classic	B-1 – B-3
Door Pull – Offset Entrance	D-9, D-10
Drawer Pulls	D-1
Dubl-Bolt	C-6
Dust Proof Strike	C-6
Dutch Door Bolt	C-8
Edge Guards	G-9
Entrance Handle – Classic	B-1 – B-3
Escutcheon – Classic	B-2
Fasteners	3
Finger Guard	G-9
Finish Kits – Automatic Flushbolts	C-6
Fire Bolt	C-8
Flush Pulls	D-5, D-6, D-7, D-8
Flush Pulls – Spindle Type	D-7
Flushbolt – Corner Manual	C-6
Flushbolts – Manual	C-6
Flushbolts – Automatic & Semi-Automatic	C-6
Focal – Contemporary Hardware	Focal A-2
Grip – Classic	B-1, B-2
Grips, Grab Bar	D-8, D-9, D-10, D-12, D-13
Guides – Flushbolt	C-8
Handrail Brackets	G-5
Holders	F-1, F-2, D-3, F-4, F-5 F-6, F-8, F-9

# INDEX by Product



Hooks – Coat and Hat	G-5
Hospital Grips	D-8
Hospital Latches	C-3
Indicators for Lock Sets	G-1
Indicator Plates	G-2
Kick Plates	G-8
Knockers	G-4
Latch Guards (Including Anti-Vandal)	G-6, G-7
Lock Astragals	G-5, G-6
Mail Plates and Accessories	G-3
Mastercraft Bronze-(Parts)	B-1, B-2
MasterCraft, Entry Pulls	B-5, B-6, B-7
Mitey Lock – Sliding Glass Locks	C-1
Modern Masterpieces, Entry Pulls	B-3, B-4
Mountings	3
Pipe Adapter for Wall Strikes	F-4
Pipe Adapter Strike	F-6
Plate Anchor	F-6
Pocket Door Pulls	D-5, D-6
Pull Plates – Classic	D-5, D-6, D-7
Pull Plates	B-1, B-2, B-3, D-2, D-3, D-4, D-11
Pulls	D-2, D-7, D-8, D-10, D-12, D-13
Push Bars, Sets	E-1, E-2, E-3, E-4
Push Plates	D-2, D-4, D-11, D-12, D-13
Push Plates – Classic	B-1, B-2, B-3
Push Pull Latches (Hospital Latch)	C-3
Restroom Signs	G-1, G-2, G-3
Risers	F-2, F-5
Roller Latches	C-1, C-2
Signage – Engraved- “These doors to remain unlock...”	G-3
Silencers	F-4
Spacers, Nylon	G-6
Special Plates	G-7
Stops	F-1, F-2, F-3, F-4, F-5, F-6, F-8, F-9
Stretcher Plates	G-8
Strikes	C-2
Surface Bolts	C-7, C-8
Tuflok – Anti-Vandal External Hardware	D-4
Viewers	G-4
Universal Dome Stop	F-2
Unit Lock Retrofit Kit	G-5
Urbãn	Focal A-2
Wall Bumpers	F-7, F-8

# INDEX by TRIMCO NUMBER

TRIMCO NUMBER	DESCRIPTION	DESIGNATION/ PATENT	PAGE
BP1	BACK PLATE FOR PULLS		D1
BP2	BACK PLATE FOR PULLS		D1
BP3	BACK PLATE FOR PULLS		D1
BP4	BACK PLATE FOR PULLS		D1
15 / STANLEY	CLASSIC PUSH PLATE / MASTER CRAFT BRONZE LINE		B1
16 / PIERCE	CLASSIC PULL PLATE / MASTER CRAFT BRONZE LINE	ADA	B1
17 / LAVA	CLASSIC PUSH PLATE/ MASTER CRAFT BRONZE LINE		B1
18 / LAVA-CAIRO	CLASSIC PULL PLATE / MASTER CRAFT BRONZE LINE	ADA	B1
35	CLASSIC DOOR PULL	ADA	B1
50 / WENDELL	CLASSIC PUSH PLATE / MASTER CRAFT BRONZE LINE		B1
51 / WENDELLX1117-1	CLASSIC PULL PLATE / MASTER CRAFT BRONZE LINE	ADA	B1
57	CLASSIC GRIP	ADA	B1
58	CLASSIC GRIP	ADA	B2
59	CLASSIC GRIP	ADA	B2
111	ESCUTCHEON		B2
242	STANDARD FLUSH PULL		D8
243T	CANE BOLT/TOP		C1
244B	CANE BOLT/BOTTOM		C1
248	STANDARD FLUSH PULL		D8
507	RESTROOM SIGN	ADA	G1
508	RESTROOM SIGN	ADA	G1
509	RESTROOM SIGN	ADA	G1
527	RESTROOM SIGN	ADA	G1
528	RESTROOM SIGN	ADA	G1
529	RESTROOM SIGN	ADA	G1
553	DRAWER PULL		D1
562-3	DRAWER PULL		D1
562-4	DRAWER PULL		D1
562-96mm	DRAWER PULL		D1
571-3	CABINET PULL- 3" CTC-CUVERRO		D1
571-6	CABINET PULL- 6" CTC		D1
571-8	CABINET PULL- 8" CTC		D1
571-10	CABINET PULL- 10" CTC		D1
620	DOOR KNOCKER		G4
621	DOOR KNOCKER		G4
625CV	DOOR KNOCKER		G4
625CVE	DOOR KNOCKER		G4
625V	DOOR KNOCKER		G4
625VE	DOOR KNOCKER		G4
751	HANDICAP SIGN		G2
752	RESTROOM SIGN		G2
753	RESTROOM SIGN		G2
754	RESTROOM SIGN		G2
755	INDICATOR PLATE		G2
756	INDICATOR PLATE		G2
757	INDICATOR PLATE		G2
758	INDICATOR PLATE		G2
760	PLASTIC SIGN		G3
771	DECAL SIGNAGE		G3
773	DECAL SIGNAGE		G3
774-ICB	DECAL SIGNAGE		G3
775-ICB	DECAL SIGNAGE		G3
793	ENGRAVED METAL SIGN		G3
802	3-WAY CATCH		C1
804	3-WAY CATCH		C1
810	HEAVY DUTY MAGNETIC CATCH		C1
975	DOOR VIEWER		G4
975L	DOOR VIEWER		G4
975U	DOOR VIEWER		G4

# INDEX by TRIMCO NUMBER

TRIMCO NUMBER	DESCRIPTION	DESIGNATION/ PATENT	PAGE
975U-CAP	DOOR VIEWER WITH CAP		G4
975CV	DOOR VIEWER CAP ONLY		G4
975-1	DOOR VIEWER		G4
976	DOOR VIEWER 180°		G4
976U	DOOR VIEWER 180°		G4
976U-CAP	DOOR VIEWER WITH CAP		G4
976CV	DOOR VIEWER CAP ONLY		G4
1001-1	PUSH PLATE		D2
1001-2	PUSH PLATE		D2
1001-3	PUSH PLATE		D2
1001-9	PUSH PLATE		D2
1001-11	PUSH PLATE		D2
1001-3P	PUSH PLATE		D2
1010-1	PULL PLATE	ADA	D2
1010-2	PULL PLATE	ADA	D2
1010-3	PULL PLATE	ADA	D2
1012-2	PULL PLATE	ADA	D2
1012-3	PULL PLATE	ADA	D2
1013-2	PULL PLATE	ADA	D3
1013-2B	PULL PLATE	ADA	D3
1013-3	PULL PLATE	ADA	D3
1013-3B	PULL PLATE	ADA	D3
1014-2	PULL PLATE	ADA	D3
1014-2B	PULL PLATE	ADA	D3
1014-3	PULL PLATE	ADA	D3
1014-3B	PULL PLATE	ADA	D3
1015-2	PULL PLATE	ADA	D3
1015-2B	PULL PLATE	ADA	D3
1015-3	PULL PLATE	ADA	D3
1015-3B	PULL PLATE	ADA	D3
1017-2	PULL PLATE	ADA	D3
1017-2B	PULL PLATE	ADA	D3
1017-3	PULL PLATE	ADA	D3
1017-3B	PULL PLATE	ADA	D3
1018-2	PULL PLATE	ADA	D4
1018-2B	PULL PLATE	ADA	D4
1018-3	PULL PLATE	ADA	D4
1018-3B	PULL PLATE	ADA	D4
1041-4	PUSH PLATE		D4
1056-4	PULL PLATE	ADA	D4
1059	ROUND FLUSH CUP		D6
1060	FLUSH PULL		D6
1061	FLUSH PULL		D6
1062	CONCEALED DOOR PULL		D6
1063	CONCEALED DOOR PULL		D6
1064	POCKET DOOR PULL, PASSAGE		D6
1064FCP	POCKET DOOR PULL		D6
1065CD	POCKET DOOR PULL		D6
1065	POCKET DOOR PULL, PRIVACY		D6
1065PA	POCKET DOOR PULL		D6
1066S	FLUSH PULL, SPINDLE		D7
1066S-38	FLUSH PULL, SPINDLE		D7
1066S-516	FLUSH PULL, SPINDLE		D7
1067	FLUSH PULL, SPINDLE		D7
1067-38	FLUSH PULL, SPINDLE		D7
1067-516	FLUSH PULL, SPINDLE		D7
1068	FLUSH PULL, SPINDLE		D7
1068-38	FLUSH PULL, SPINDLE		D7
1068-516	FLUSH PULL, SPINDLE		D7

# INDEX by TRIMCO NUMBER

TRIMCO NUMBER	DESCRIPTION	DESIGNATION/ PATENT	PAGE
1069	POCKET DOOR PULL		D7
1069L	POCKET DOOR PULL- LOCKABLE		D7
1069FP	POCKET DOOR PULL- FULL PRIVACY		D7
1070-2	PUSH PLATE		B2
1071-2	PULL PLATE	ADA	B2
1074-1	POCKET DOOR PULL- PRIVACY ONLY	ADA	D5
1074-2	POCKET DR PULL – MORTISE LOCK/ROSE TRIM	ADA	D5
1074-3	POCKET DOOR PULL -PASSAGE ONLY	ADA	D5
1074-2E	POCKET DR PULL-MRTS LOCK-ESCUTCHEON	ADA	D5
1074-2-XXX-5004	POCKET DR PULL – MRTS AND LOCK INDICATOR	ADA	D5
1074-2E-XXX-5004	POCKET DR PULL- MRTS-ESCUT AND LCK INDICA	ADA	D5
1082-4	ANTI-VANDAL DEVICE - 5-3/8"	ADA	D4
1082-6	ANTI-VANDAL DEVICE – 4" X 6" X 5-3/8"	ADA	D4
1082-8	ANTI-VANDAL DECICE – 8" X 2-7/8"	ADA	D4
1096TL	TUF-LOK SYSTEM ANTI VANDAL	ADA	D4
1096HA	TUF-LOK HANDLE ONLY	ADA	D4
1096VD98-99-HA, NC	ANTI-VANDAL PULL FOR VON DUPRIN 98-99		D4
1097HA	TUF-LOK HANDLE ONLY, NO ASTRAGAL	ADA	D4
1097TL	TUF-LOK, NO ASTRAGAL	ADA	D4
1097VD98-99-HA, NC	ANTI-VANDAL PULL FOR VON DUPRIN 98-99		D5
1098RG	ANTI VANDAL PULL	ADA	D5
1099RG	ANTI-VANDAL PULL	ADA	D5
1102S	PULL	ADA	D2
1102T	PULL	ADA	D2
1109-1	PULL	ADA	D2
1111A	FLUSH PULL, CUP MOUNT	ADA	D8
1111B	FLUSH PULL, FACE MOUNT	ADA	D8
1111C	FLUSH PULL, CUP MOUNT-MEETS CA DISABILITY	ADA	D8
1113	FLUSH PULL	ADA	D8
1115	FLUSH PULL,	ADA	D8
1115B	FLUSH PULL, PAIR BTB	ADA	D8
1115C	FLUSH PULL, CUP MOUNT	ADA	D8
1115P	FLUSH PULL, PAIR-PREP FOR BTB W/LUGS	ADA	D8
1117-1	PULL	ADA	D9
1120	PULL	ADA	D9
1134	HOSPITAL PULL	ADA	D9
1134B	HOSPITAL PULL, BTB	ADA	D9
1135	GRIP	ADA	D9
1136 / VELAZQUEZ	GRIP	ADA	D9
1139-1	GRIP	ADA	D9
1139-2	GRIP	ADA	D9
1147	GRIP	ADA	D9
1147B	GRIP, BTB		D9
1150	GRIP	ADA	D10
1151	GRIP	ADA	D10
1160	PUSH/PULL BARS AND SETS	ADA	E3
1160-1	PUSH/PULL BARS AND SETS	ADA	E3
1161	PUSH/PULL BARS AND SETS	ADA	E3
1161-1	PUSH/PULL BARS AND SETS	ADA	E3
1162	PUSH/PULL BARS AND SETS	ADA	E3
1162-1	PUSH/PULL BARS AND SETS	ADA	E3
1163	PUSH/PULL BARS AND SETS	ADA	E3
1163-1	PUSH/PULL BARS AND SETS	ADA	E3
1164	PUSH/PULL BARS AND SETS	ADA	E3
1164-1	PUSH/PULL BARS AND SETS	ADA	E3
1170	PUSH/PULL BARS AND SETS	ADA	E3
1171	PUSH/PULL BARS AND SETS	ADA	E3
1172	PUSH/PULL BARS AND SETS	ADA	E3
1172-1	PUSH/PULL BARS AND SETS	ADA	E3
1173	PUSH/PULL BARS AND SETS	ADA	E3
1174	PUSH/PULL BARS AND SETS	ADA	E3
1175	PUSH/PULL BARS AND SETS	ADA	E3
1183-1/CAIRO	GRIP/MASTERCRAFT-BRONZE LINE	ADA	D11
1191-1	GRIP	ADA	D10
1191-2	GRIP	ADA	D10
1191-3	GRIP	ADA	D10



# INDEX by TRIMCO NUMBER

TRIMCO NUMBER	DESCRIPTION	DESIGNATION/ PATENT	PAGE
1191-4	GRIP	ADA	D10
1191-4J	GRIP	ADA	D10
1191-5	GRIP	ADA	D10
1191-5J	GRIP	ADA	D10
f1191-1	fOCAL GRIP	ADA	D10
f1191-2	fOCAL GRIP	ADA	D10
f1191-3	fOCAL GRIP	ADA	D10
f1191-4	fOCAL GRIP	ADA	D10
f1191-4J	fOCAL GRIP	ADA	D10
f1191-5	fOCAL GRIP	ADA	D10
f1191-5J	fOCAL GRIP	ADA	D10
1193-1	GRIP	ADA	D10
1193-2	GRIP	ADA	D10
1194-1	GRIP	ADA	D11
1194-2	GRIP	ADA	D11
1194-3	GRIP	ADA	D11
1194-4	GRIP	ADA	D11
1195-1	GRIP	ADA	D11
1195-2	GRIP	ADA	D11
1195-3	GRIP	ADA	D11
1195-3J	GRIP	ADA	D11
1195-6	GRIP	ADA	D11
1195-6J	GRIP	ADA	D11
1198-1-XX.710CU	BACTERICIDAL COPPER GRAB BAR		D8
1199-1	GRIP	ADA	D10
1199-2	GRIP	ADA	D10
1200	FLOOR STOP WS		F1
1201	FLOOR STOP		F1
1201CK	FLOOR STOP		F1
1201-5	FLOOR STOP		F1
1204	BASE STOP WS		F1
1205	BASE STOP		F1
1206	BASE STOP WS		F1
1207	STOP		F1
1208	STOP		F1
1209	HEAVY DUTY FLOOR STOP		F1
1209W	HEAVY DUTY WALL STOP		F1
1209HO	HEAVY DUTY FLOOR STOP, HOLD OPEN		F1
1209HA	HEAVY DUTY FLOOR STOP, SS SHAFT		F1
1211	UNIVERSAL DOOR STOP	#4,209,876	F2
1211CH	CARPET RISER		F2
1211CL	CARPET RISER		F2
W1211	UNIVERSAL DOME STOP		F2
W1211CH	RISER		F2
W1211CL	RISER		F2
1214	STOP		F2
1214CK	HEAVY DUTY STOP		F2
1214CKx1268CK	HEAVY DUTY STOP x ANCHOR PLATE		F2
1214H	HEAVY DUTY STOP, 2-1/4" HIGH		F2
1215CKU	UNIVERSAL STOP		F3
1217P, S	STOP		F3
1220-5	KICKDOWN DOOR STOP		F3
1221-4	KICKDOWN DOOR STOP		F3
1221-4FF	KICKDOWN DOOR STOP		F3
1223	STOP WS		F3
1224	STOP		F3.
1224-5	STOP		F3
1229A	SILENCER, METAL FRAME		F4
1229B	SILENCER, WOOD FRAME		F4
1229EL	EVEVATOR BUMPER		F4
1231	STOP		F4
1233	STOP		F4

# INDEX by TRIMCO NUMBER

TRIMCO NUMBER	DESCRIPTION	DESIGNATION/ PATENT	PAGE
1234	STOP AND HOLDER		F4
1235	BASE STOP		F4
1240	HINGE PIN STOP		F4
1244	STOP, ROLLER		F5
1244-6	STOP, ROLLER		F5
1245	STOP, ROLLER		F5
1254	STOP AND HOLDER		F5
1255	PLUNGER DOOR HOLDER		F5
1257M	STOP		F5
1257R	RISER		F5
1258M	STOP		F5
1260P	PIPE ADAPTER STRIKE		F6
1260W	STOP AND WALL STRIKE		F6
1260WP	STOP AND HOLDER WITH PIPE ADAPTER STRIKE		F6
1261	STOP AND HOLDER		F6
1263	STOP AND HOLDER		F6
1265	STOP AND HOLDER		F6
1267	STOP AND HOLDER		F6
1268	ANCHOR PLATE		F6
1268CK	ANCHOR PLATE, DRILLED AND TAPPED FOR 1214CK		F6
1270CX	WALL BUMPER - CONVEX		F7
1270CV	WALL BUMPER - CONCAVE		F7
1270CVPV	WALL BUMPER		F8
1270CVSV	WALL BUMPER		F8
1270WX	WALL BUMPER - CONVEX		F7
1270WV	WALL BUMPER - CONCAVE		F7
1275RP	WALL BUMPER		F7
1277/79	WALL BUMPER		F7
1278CV	WALL BUMPER		F7
1278CX	WALL BUMPER		F7
L1280	STOP AND HOLDER		F8
L1280CI	STOP AND HOLDER- CAST IRON		F8
1282	STOP AND HOLDER		F8
1282CI	STOP AND HOLDER		F8
1283-2S, 4S, 6S	"ADJUSTRE" DOOR STOP AND HOLDER	#3,129,024	F8
1290	STOP		F9
1291	STOP		F9
1296, 1296S	STOP		F9
1298	STOP		F9
1301	MASTERPIECE PULL	ADA	B3
1310	MASTERPIECE PULL	ADA	B3
1310-1	MASTERPIECE PULL	ADA	B3
1320	MASTERPIECE PULL	ADA	B3
1330	MASTERPIECE PULL	ADA	B3
1340	MASTERPIECE PULL	ADA	B3
1340-10	MASTERPIECE PULL	ADA	B3
1342	MASTERPIECE PULL	ADA	B3
1350	MASTERPIECE PULL	ADA	B4
1360	MASTERPIECE PULL	ADA	B4
1370	MASTERPIECE PULL	ADA	B4
1380	MASTERPIECE PULL	ADA	B4
1390	MASTERPIECE PULL	ADA	B4
1410	MASTERPIECE PULL	ADA	B4
1410-1	MASTERPIECE PULL	ADA	B4
1502, 1503, 1505	LATCHBOLTS	UL	C3
1554	ROLLER LATCH		C1
1555, 1555L	CLOSET BALL CATCH		C1
1559	ROLLER LATCH		C2
1559A	STRIKE FOR THE ROLLER LATCH		C2
1559B	STRIKE FOR THE ROLLER LATCH		C2
1559BL	ROLLER LATCH WITH STOP		C2
1559C	STRIKE FOR THE ROLLER LATCH		C2
1559WA,WB, WC	STRIKE ONLY FOR HD ROLLER LATCH		C2

# INDEX by TRIMCO NUMBER

TRIMCO NUMBER	DESCRIPTION	DESIGNATION/ PATENT	PAGE
1562A, 1562AP	PUSH/PULL LATCH (P= ENGRAVED)	<b>ADA / UL</b> #’s 4,003,593 / 4,986,583	C3
1562AE	EXIT ONLY LATCH	<b>ADA / UL</b> #’s 4,003,593 / 4,986,583	C3
1562M	PUSH/PULL LATCH – MORTISE LOCK	<b>ADA / UL</b> #’s 4,003,593 / 4,986,583	C3
1562Q	PUSH/PULL LATCH – MORTISE LOCK	ADA/UL	
1563A, 1563AP	PUSH/PULL LATCH (P= ENGRAVED)	<b>ADA / UL</b> #’s 4,003,593 / 4,986,583	C3
1580A, 1580AP	PUSH/PULL LATCH (P= ENGRAVED)	<b>ADA / UL</b> #’s 4,003,593 / 4,986,583	C3
1581A, 1581AP	PUSH/PULL LATCH (P= ENGRAVED)	<b>ADA / UL</b> #’s 4,003,593 / 4,986,583	C3
1591A, 1591AP	REVERSE PUSH/PULL LATCH (P= ENGRAVED)	<b>ADA</b>	C3
1592LLE	LEAD LINED ESCUTCHEON		C3
1592LLT	LEAD LINED LATCH TUBE		C3
1593RK	REPLACEMENT KIT		C3
1630	PUSH BAR		E1
1630B	PUSH BAR, BTB		E1
1633	PUSH BAR		E1
1633-1	PUSH BAR		E1
1637	PUSH BAR		E1
J1637	J-HOOK ONLY FOR THE 1637		E1
1643	PUSH BAR SET		E2
1644	PUSH BAR SET		E2
1661	PUSH BAR SET		E2
1662	PUSH BAR SET		E2
1698	PUSH BAR		E2
1729	PUSH/PULL BAR SET		E4
F1729	PUSH/PULL BAR SET-Focal OPTION	<b>ADA</b>	E4
1731	PUSH/PULL BAR SET	<b>ADA</b>	E4
F1731	PUSH/PULL BAR SET-Focal OPTION	<b>ADA</b>	E4
1732	PUSH/PULL BAR SET	<b>ADA</b>	<b>E4</b>
F1732	PUSH/PULL BAR SET-Focal OPTION	<b>ADA</b>	E4
1737	PUSH/PULL BAR SET	<b>ADA</b>	E4
F1737	PUSH/PULL BAR SET-Focal OPTION	<b>ADA</b>	E4
1738	PUSH/PULL BAR SET	<b>ADA</b>	E4
F1738	PUSH/PULL BAR SET-Focal OPTION	<b>ADA</b>	E4
1740	PUSH/PULL BAR SET	<b>ADA</b>	E4
F1740	PUSH/PULL BAR SET-Focal OPTION	<b>ADA</b>	E4
1741	PUSH BAR	<b>ADA</b>	E4
F1741	PUSH/PULL BAR SET-Focal OPTION	<b>ADA</b>	E4
1745	PUSH BAR	<b>ADA</b>	E4
F1745	PUSH/PULL BAR SET-Focal OPTION	<b>ADA</b>	E4
1746	PUSH BAR	<b>ADA</b>	E4
F1746	PUSH/PULL BAR SET-Focal OPTION	<b>ADA</b>	E4
1746-1	PUSH/PULL BAR SET	<b>ADA</b>	E4
F1746-1	PUSH/PULL BAR SET-Focal OPTION	<b>ADA</b>	E4
1747	PUSH/PULL BAR SET	<b>ADA</b>	E4
F1747	PUSH/PULL BAR SET	<b>ADA</b>	E4
1747-1	PUSH/PULL BAR SET	<b>ADA</b>	E4
1748	PUSH/PULL BAR SET	<b>ADA</b>	D11
F1748	DOOR PULL	<b>ADA</b>	D11
1748-1	DOOR PULL	<b>ADA</b>	D11
1802-4	PULL PLATE	<b>ADA</b>	D12
1802-25, 25PL, 25PH,	PULL PLATE	<b>ADA</b>	D12
1804-4	PULL PLATE	<b>ADA</b>	D12
1807-4	PUSH PLATE		D12
1809-4	PUSH PLATE		D12
1820	PUSH/PULL PLATE		D12
1820-11	PUSH/PULL PLATE		D12
1822	CYLINDER PULL		D12
1822-1	CYLINDER PULL		D12
1822-2	CYLINDER PULL		D12

# INDEX by TRIMCO NUMBER

TRIMCO NUMBER	DESCRIPTION	DESIGNATION/ PATENT	PAGE
1894	PUSH/PULL PLATE COMBO		D13
1895	PUSH/PULL PLATE COMBO		D13
1896-4B	PUSH/PULL PLATE COMBO		D13
1900/ABERDEENE X VELAZQUEZ	CLASSIC PULL PLATE	ADA	B2
1901/ABERDEEN	CLASSIC PUSH PLATE		B2
2082	MAIL PLATE SET		G3
2085	MAIL PLATE SET		G3
2091	MAIL SLOT SLEEVE		G3
3070-1	COAT AND HAT HOOK		G4
3071	COAT AND HAT HOOK		G4
3071-1	COAT AND HAT HOOK		G5
3072	COAT HOOK		G5
3090	CARRY OPEN BAR		C4
3092	COORDINATOR	UL	C4
3093	COORDINATOR	UL	C4
3094 (A-D)	COORDINATOR	UL #5,033,234	C4
3094-X (1-6)	FILLER BAR		C4
3095	MOUNTING BRACKET	UL	C4
3096	MOUNTING BRACKET	UL	C4
3405	HANDRAIL BRACKET		G5
3406	HANDRAIL BRACKET		G5
3651	STRIKE 115.3		C2
3652	STRIKE 115.2		C2
3810	AUTOMATIC FLUSHBOLT, METAL DOOR	UL #5,076,620	C5
3815L	AUTOMATIC FLUSHBOLT, WOOD DOOR	UL #5,076,620	C5
3820	SEMI-AUTOMATIC FLUSHBOLT, METAL DOOR	UL #5,004,277	C5
3825L	SEMI-AUTOMATIC FLUSHBOLT, WOOD DOOR	UL #5,004,277	C5
3830 (A, AL, M, WL)	FINISH KIT - AFB, SEMI-AFB		C5
3850	FIREBOLT, DOOR EDGE MOUNTED	ADA	C5
3900	DUBL-BOLT	ADA / UL PENDING	C5
3910	DUST PROOF STRIKE		C6
3911	ADJUSTABLE DUST PROOF STRIKE		C6
3913	FLUSH EXTENSION BOLT- WOOD DR-EXTRUDED	UL	C6
W3913	FLUSH EXTENSION BOLT- WOOD DR-WROUGHT	UL	C6
3915	FLUSH EXTENSION BOLT- METAL DOOR	UL	C6
3916	FLUSH EXTENSION BOLT- WOOD DOOR	UL	C6
3917-1B	1-1/2" BOLTHEAD		C6
3917-3B	3" BOLTHEAD		C6
3917-12	MANUAL FLUSHBOLT, METAL DOOR	UL	C6
3917-12ET	MANUAL FLUSHBOLT, METAL DOOR		C6
W3917-12	MANUAL FLUSHBOLT, METAL DOOR	UL #4,315,647	C6
3920 (-4, -8...)	DUTCH DOOR BOLT-CAST		C7
3921	HD SURFACE BOLT		C7
3922	HD SURFACE BOLT	UL	C7
3922L	LOCKING HD SURFACE BOLT	UL	C7
3923	SURFACE BOLT	UL	C7
3928K, L	CREMONE BOLT / KNOB, LEVER		C8
3999	FLUSHBOLT, WOOD, ROUNDED END		C8
3999SE	FLUSHBOLT, WOOD, SQUARE END		C8
4015	DOOR GUARD, CHAIN		G6
4016	DOOR GUARD, SWING ARM		G6
4016ED	EDGE PROTECTOR		G6
4016S	NYLON SPACER, BLACK ONLY		G6
4048	CHAIN CRASH STOP		G6
4873	SURFACE BOLT		C8
4874	SURFACE BOLT		C8
4876	SURFACE BOLT		C8
4882	SURFACE BOLT		C8
5000-T	LOCK ASTRAGAL, CAST		G5
5001	LOCK ASTRAGAL		G5
5002	LOCK ASTRAGAL		G5
5004	MORTISE LOCK INDICATOR		G1
5022	UNIT LOCK TO CYLINDRICAL LOCK		G5

# INDEX by TRIMCO NUMBER

TRIMCO NUMBER	DESCRIPTION	DESIGNATION/ PATENT	PAGE
7001	fOCAL PUSH PLATE 4x16		fOCAL A2
7009	fOCAL PUSH PLAT 6x16		fOCAL A2
7010	fOCAL ROBE HOOK AND STOP		fOCAL A2
7059	fOCAL FLUSH CUP		fOCAL A2
7060	fOCAL FLUSH CUP, LARGE		fOCAL A2
7061	fOCAL FLUSH CUP, SMALL		fOCAL A2
7140	fOCAL 'D' PULL WITH PLATE INTERIOR - 6"	ADA	fOCAL A2
7140S	fOCAL 'D' PULL WITH STYLE PLATES INTERIOR - 6"	ADA	fOCAL A2
7141	fOCAL 'D' PULL WITH PLATE INTERIOR - 8"	ADA	fOCAL A2
7141S	fOCAL 'D' PULL WITH STYLE PLATES INTERIOR - 8"	ADA	fOCAL A2
7150	fOCAL CANE PULL - EXTERIOR	ADA	fOCAL A2
7160	fOCAL OFFSET CANE PULL - EXTERIOR	ADA	fOCAL A2
7170	fOCAL WING PULL EXTERIOR - 10"	ADA	fOCAL A2
7180, 7181	fOCAL INTERIOR WING PILL		
7191	fOCAL 45° OFFSET PULL EXTERIOR	ADA	fOCAL A3
7196-1, 7196-2, 7196-3	COOL PULL-8", 10', 12"	ADA	fOCAL A3
7208	fOCAL PENCIL STOP		fOCAL A3
7276	fOCAL WALL STOP, CAST		fOCAL A3
W7276	fOCAL WALL STOP, WROUGHT		fOCAL A3
7278	fOCAL DECOR WALL STOP, CONCAVE-BLK RUBBER		fOCAL A3
7280	fOCAL FLOOR STOP, SMALL		fOCAL A3
7281	fOCAL FLOOR STOP, LARGE		fOCAL A3
7285	fOCAL FLOOR STOP AND HOLDER, LARGE WITH BAIL AND HOOK		fOCAL A3
7300-1	CABINET KNOB		D1
7300-1-1/4	CABINET KNOB		D1
7301-1	CABINET KNOB		D1
7301-1-1/4	CABINET KNOB		D1
FG8000-24, 36, 42	FRAME GUARD		G7
PBT8000-1, 2	PUSH BAR TRIM COVER FOR VD OR STANLEY		G7
PG8000	LATCH GUARD	#350,473 / 5,381,627	G6
PG8002	LATCH GUARD / KICK PLATE COMBINATION	#350,473 / 5,381,627	G6
PG8002-1	LATCH GUARD & KICK PLATE (2-PIECE)	#350,473 / 5,381,627	G6
9550	PUSH/PULL SET		D13
9551	PUSH/PULL SET		D13
9560	OFFSET ENTRANCE PULL	ADA	D13
9561	OFFSET ENTRANCE PULL	ADA	D13
9566	PUSH/PULL PLATE WITH CO. LOGO	ADA	D13
KA038	ARMOR PLATE .038		G8
KH050	HANDICAP KICK PLATE		G8
KM038	MOP PLATE .038		G8
K0038	KICK PLATE .038		G8
KA050-1	ARMOR PLATE .050 17" - 24" HEIGHT		G8
KA050-2	ARMOR PLATE .050 24" - 36" HEIGHT		G8
KA050-3	ARMOR PLATE .050		G8
10X34-ILLUM.630	KICK PLATE WITH ILLUMINATED EXIT		G8
KM050	MOP PLATE .050 6" HEIGHT TO LESS THAN 8" HEIGHT		G8
KM050-1	MOP PLATE .050 LESS THAN 6" HEIGHT		G8
K0050	KICK PLATE .050		G8
KS050	STRETCHER PLATE .050		G8
K6000	KICK PLATE, PLASTIC .125		G8

# INDEX by TRIMCO NUMBER

TRIMCO NUMBER	DESCRIPTION	DESIGNATION/ PATENT	PAGE
KE31-1	EDGE GUARD		G9
KE32-1	EDGE GUARD		G9
KE33-1	EDGE GUARD		G9
KE33-2	EDGE GUARD		G9
KE34-1	EDGE GUARD		G9
KE35-1	EDGE GUARD		G9
KE36-1	EDGE GUARD		G9
KE37-1	EDGE GUARD		G9
KE38-1	EDGE GUARD		G9
K39	FINGER GUARD		G7
WA-A	SPECIAL PROTECTION PLATE		G7
WA-B	SPECIAL PROTECTION PLATE		G7
WA-C	SPECIAL PROTECTION PLATE		G7
WA-D	SPECIAL PROTECTION PLATE		G7
WA-E	SPECIAL PROTECTION PLATE		G7
ADON	MASTERCRAFT ENTRY PULL		B5
APOLLO	MASTERCRAFT ENTRY PULL		B5
ARES	MASTERCRAFT ENTRY PULL		B5
ATLAS	MASTERCRAFT ENTRY PULL		B5
CRONUS	MASTERCRAFT ENTRY PULL		B5
DAPHNE	MASTERCRAFT ENTRY PULL		B5
HELANE	MASTERCRAFT ENTRY PULL		B6
HELIO	MASTERCRAFT ENTRY PULL		B6
HERMES	MASTERCRAFT ENTRY PULL		B6
HERO	MASTERCRAFT ENTRY PULL		B6
ISIS	MASTERCRAFT ENTRY PULL		B6
JUNO	MASTERCRAFT ENTRY PULL		B6
LUNA	MASTERCRAFT ENTRY PULL		B6
MEDEA	MASTERCRAFT ENTRY PULL		B6
MIDAS	MASTERCRAFT ENTRY PULL		B7
OLYMPUS	MASTERCRAFT ENTRY PULL		B7
SATURN	MASTERCRAFT ENTRY PULL		B7
SOLAR	MASTERCRAFT ENTRY PULL		B7
VENUS	MASTERCRAFT ENTRY PULL		B7
VESTA	MASTERCRAFT ENTRY PULL		B7
ZEUS	MASTERCRAFT ENTRY PULL		B7

# NEW PRODUCTS

## DCO50 SERIES – DOOR CAP

<b>Trimco #</b>	<b>DCO50</b>
Description	Door Cap
For Use With	Flush Bolts & Concealed Vertical Rods
Finishes	605, 606, 612, 613, 629, 630 Other finishes available via quotation.
Lead Time	7 – 10 Working Days



## 1110 SERIES – FLUSH PULLS

PART #	DESCRIPTION
1110-8	8" x 2 -1/2" Flush Pull
1110-10	10" x 2-1/2" Flush Pull
1110-18	18" x 2-1/2" Flush Pull
1110-CUST	Custom Size Flush Pull

1110-18



1110-10

1110-8

## 1185 SERIES - ADJUSTABLE & CONFIGURABLE PULL

1185 Series	1185-18	1185-30	1185-42	1185-CUST
Grip Length (w/out end caps)	17"	29"	41"	Specify
Material (Tube)	1-1/4"	1-1/4"	1-1/4"	1-1/4"
Projection	3"	3"	3"	3"
Clearance	1-1/2"	1-1/2"	1-1/2"	1-1/2"
Standard CTC	12"	24"	36"	OA -6"
CTC Range	9" – 15"	17" – 27"	26" – 39"	TBD



## 5022A – UNIT LOCK ADAPTER WITH ASTRAGAL FEATURES

- Non-handed.
- Heavy duty stainless steel construction.
- Prepped to fit most cylindrical locks.
- Patent pending.
- Now available with or without an astragal.



**NEW:** 5022A

## 5200 SERIES – WRAP PLATES

PLEASE VISIT US AT:  
[WWW.TRIMCOHARDWARE.COM](http://WWW.TRIMCOHARDWARE.COM)  
FOR MORE INFORMATION.



# NEW PRODUCTS

## T-PRINT – CUSTOM ANODIZED PULLS

	STANDARD FEATURES		
	9550 - Economy	9570 - Premium	9590 - Boutique
Part Number	9550-TP.CUST	9570-TP.CUST	9590-TP.CUST
Pull Type	9550 Extruded Pull	½" Aluminum Plate	Water Jet Cut ½" Aluminum Plate
Pull Size	6"x9" Larger Heights Available	5"x9" Larger Sizes Available	Up to 5"x9" Larger Sizes Available
Included Colors	1	2	3
Standoff(s)	Included on Extrusion	Stainless Steel Standoffs	Stainless Steel Standoffs
Standard CTC	7"	7"	TBD



## T-ETCH – ACID ETCHING

### FEATURES

- Acid etching process, with optional color infill.
- Manufactured in the United States.
- Heavy duty .050" stainless steel, brass or bronze material standard.
- Sizes up to 4' x 8'.
- Pencil beveled on all four sides standard.
- Custom cutouts, sizes and shapes available.
- Easily cleaned with mild soap and water.



Etched with Infill



Etched Only

## 4017 – SECURITY DOOR GUARD

Trimco #	4017.xxx (add finish code)
Description	Security Door Guard
Base Width	1-1/2" (38.1mm)
Base Height	2-3/4" (69.9mm)
Projection	2-13/64" (56.0mm)
Finishes	626, 605, 606, 613, 619, 625
Fasteners	(3) #12 1-3/4"



Closed



Open

## LDH100 SERIES – LOCK DOWN HARDWARE-PANIC BUTTON

Trimco #	LDH100
Description	Lockdown Panic Button
Available For	VD – Von Duprin 98/99 & 33/35 <i>COMING SOON:</i> PHI – Precision Apex 2000 SG – Sargent 80 DM – Dorma 9300 MK – Marks M9900
Finishes	605, 606, 613P, 619, 625, 626



**COMING SOON!**





## PRODUCT ANNOUNCEMENT

# UL Fire Rating Panic Guards & Frame Guards



FG Series  
Frame Guards



PG8000 Series  
Latch Guards



PG8125 Series  
End Cap Guards

## THE SAME GREAT PRODUCTS, NOW UL RATED!

Trimco now has UL certification on many of our specialty protection items.

Trimco's FG Series of frame guards allows protection from wheeled equipment hitting and damaging door frames. Equipment such as wheelchairs, gurneys, heavy food carts and hospital beds will be deflected from hitting the door frame by the built-in roller. This product is manufactured from stainless steel and available in 3 standard sizes: 24", 36" and 42". Custom sizes also available.

Trimco's PG Series Panic Guards include protection for both latches and end caps of exit devices. The Latch Guards (PG8000's) prevent damage to the lower latch of an exposed rod panic device from work carts, fork lifts and pallet jacks, as well as shield the foot area of wheel chair users from the lower latch protrusion. The simple, sleek non-handed design installs over the lower latch bolt and easily installs with standard tools. Designed to protect exit devices from damage and destruction, the End Cap Guards (PG8125's) are manufactured from 18GA stainless steel and mate with Corbin Russwin, Sargent, Yale, Monarch, Von Duprin, Adams-Rite and other manufacturers.

PRODUCT	Classified Metal Door	Classified Wood Door
FG8000 Series	3 Hour	1-1/2 Hour
PG8000 Series	3 Hour	1-1/2 Hour
PG8125 Series	3 Hour	1-1/2 Hour



Certified in the  
US & Canada

# AVAILABLE FINISHES

U.S. GOVT.	BHMA	DESCRIPTION
US3	605	Polished Brass, Clear Coated
US3NL*	499*	Polished Brass, No Lacquer
US4	606	Satin Brass, Clear Coated
US5*	609	Satin Brass, Blackened, Satin Relieved, Clear Coated
US7*	610*	Satin Brass, Blackened, Bright Relieved, Clear Coated
US9*	611	Polished Bronze, Clear Coated
US10	612	Satin Bronze, Clear Coated
US10B	613	Dark Oxidized Satin Bronze, Oil Rubbed
US11*	616*	Satin Bronze, Blackened, Satin Relieved, Clear Coated
US15	619	Satin Nickel Plated, Clear Coated
US15A	620	Satin Nickel Plated, Blackened, Satin Relieved, Clear Coated
US19*	622*	Satin Black Coated
US26	625	Bright Chrome Plated
US26D	626	Satin Chrome Plated
US28	628	Satin Aluminum, Clear Anodized
US32	629	Polished Stainless Steel
US32D	630	Satin Stainless Steel
--	630TG	SS With Trimgard
--	313	Satin Aluminum, Dark Bronze Anodized
--	335	Satin Aluminum, Black Anodized
--	710CU	Steralloy - CuVerro Alloy (standard)
--	706CU	Sterose - CuVerro Alloy (upon request)

Those finishes with asterisks (\*) are considered "Special" and are available on request. 313 and 335 finishes are available on limited products. Those products are marked with underlined prices in the price list.

Many other finishes can be furnished on special order, or by Quotation.

Note: Finish 613 (US-10B) is unstable and will vary when applied to different alloys or forms of base metal and in the products of different manufacture. Limited shelf life.

Finish 622 (US19), flat black coated, is neither recommended or guaranteed.

## ABBREVIATIONS USED

B - Base	D - Diameter	L - Length	S - Spindle
BHMA - BHMA product #	DP - Depth	M - Material	STR - Strike
BP - Base Projection	E - Engraving	OA - Overall Size	SW - Stop Width
BR - Brackets	F - Finish	OD - Outside Dimension	SYM - Symbol
BS - Backset	G - Grip Style	P - Projection	TH - Throw
CL - Clearance	GP - Grip Projection	PP - Push Plate	W - Width
COL - Color	H - Height	R - Riser	WC - Wall to Center Line
CTC - Center to Center	ID - Inside Dimension	RET - Return Width	CU+ - CuVerro

Combo Pack - Fasteners for both wood, plaster or concrete are included.

*Abbreviations are also defined at the bottom of each page*

Br - Brass, Bz - Bronze, Al - Aluminum, SS - Stainless Steel, PI - Chrome Plated (Brass or Bronze casting)

*The small letters Br, Bz, PI, SS, Al at the lower right of each product table identify the base metal options in which that product is available*

## NOTES

- *The hardware shown on these pages is made with no compromise in quality, design or durability. Only first quality extrusions, sheet stock and castings are used. Careful matching, polishing, assembly and finishing result in a final product which we present with pride.*
- Templates are available on website, or upon request, for almost every product offered by TRIMCO. Templates are issued only for the project for which they are requested. TRIMCO reserves the right to make design changes without notice. Always request a current template prior to machining doors.
- Our complete in-plant capabilities enables us to produce countless items of a special nature. *Let us quote on any of your hardware needs not shown in this catalog.*
- A large number of exterior pull handles and push/pull bar sets may be adapted for fOCAL styling and are marked “fOCAL option available” in the catalog and price list. Hard black finished style plates of appropriate diameter are provided at all locations where grip or base meet door.
- All castings are available in brass, bronze, or aluminum unless otherwise noted.
- The small letters at the lower right of each product table identify the base metal options in which that product is available. Br - Brass, Bz - Bronze, Al - Aluminum, SS - Stainless Steel, PI - Chrome Plated

### **WARRANTY DISCLAIMER; EXCLUSIVE REMEDY**

WE WARRANT THAT OUR PRODUCTS ARE SUITABLE FOR THE USE FOR WHICH THEY WERE DESIGNED. PROPERLY SELECTED, PROPERLY INSTALLED AND NOT ABUSED IN USE, THEY WILL SERVE THE PURPOSE FOR WHICH THEY WERE INTENDED. THEY COME WITH A LIFETIME WARRANTY, PROVIDED THAT THEY ARE APPROPRIATE FOR THE SELECTED USE. PROPERLY INSTALLED, AND NOT ABUSE IN USE.

We do not warrant the merchantability or our products, nor do we offer any other warranty of any kind, expressed or implied, and the customer any not extend any warranty on our behalf to anyone. Any such unauthorized extensions shall be the customer’s responsibility. In no event shall we be liable to the customer in warranty, contract, strict liability or otherwise for any damages alleged to be caused by one or more of our products, beyond the cost to the customer of the subject product or products, refund of the purchase price being customer’s sole and exclusive remedy against us upon proof of any alleged claim. Incidental and consequential damages, including labor costs relating to installation or removal, shall not be our liability, and customer shall not have remedy against us for such damages, the sole and exclusive remedy for a proven claim having been stated above.

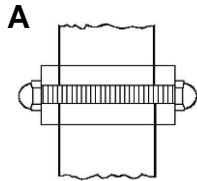
All materials and finishes meet ANSI/BHMA standards at time of shipment. We do not warrant finishes exposed to hostile environments.

Customer is responsible for determining the suitability of our products for customer’s use or resale, or for

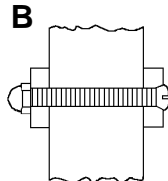
# STANDARD MOUNTING METHODS:

Add "W" to prep for Glass Mount. Specify Glass Thickness, Hole Diameter and Finish.  
 Non-Standard Preps available by quotation only.

Products marked "Combo Pack" include fastening kit for mounting to wood, concrete and plaster/drywall.  
 All fasteners for 1-3/4" wood or metal doors unless otherwise specified.



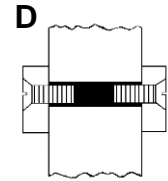
**A**  
 Threaded Stud  
 and Cap Nut



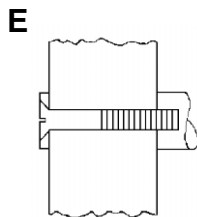
**B**  
 Thru-Bolt  
 and Cap Nut

**C**

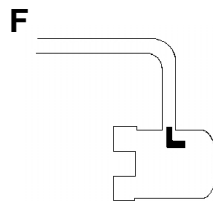
DISCONTINUED  
 USE  
 ALTERNATE  
 MOUNTING "N"



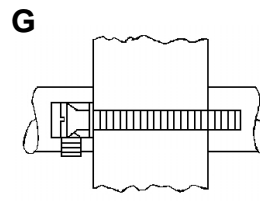
**D**  
 Machine Screws and  
 Threaded Sleeve



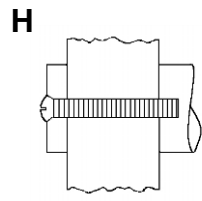
**E**  
 Thru-Bolt and  
 Finish Washer  
 Not for glass mounting



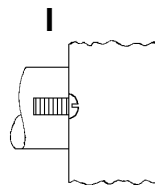
**F**  
 J-20 Hook (For Push  
 Bars only-one end)  
 Not for glass mounting



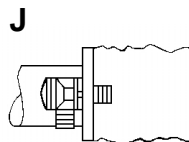
**G**  
 Threaded Shoulder Bolt  
 and Set Screw  
 BP's req'd for glass doors.  
**NOTE:** Not for Glass mounting



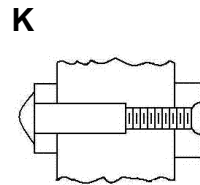
**H**  
 Thru-bolt



**I**  
 Blind Screw  
 (Door detail required)  
 Not for glass mounting.

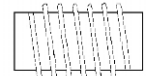


**J**  
 Shoulder Bolt and Set  
 Screw  
 Round Bases  
 Specify Riv-Nut "R3", "R4" or  
 "B3", "B4" or "B5" if required, for  
 use on aluminum doors.  
 Not for glass mounting

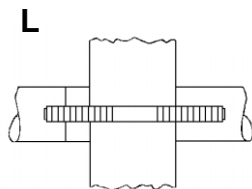


**K**  
 Sex Bolt

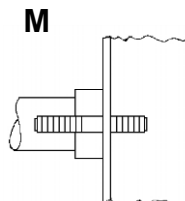
**B3, B4, or B5**



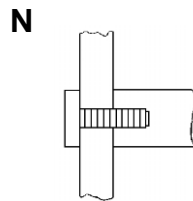
Wood Thread to Machine  
 Thread Bushing  
 For J or M Mountings  
 on Wood Doors  
 B3 - 1/4-20 Thread  
 B4 - 5/16-18 Thread  
 B5 - 3/8-16 Thread



**L**  
 Spanner Turning Washer and  
 Stud. Concealed Mounting for  
 Round Bases.  
 For Standard Metal, Wood, or Glass Doors.  
 Specify. BP's req'd for glass doors.

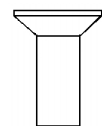


**M**  
 Spanner Turning Washer,  
 Stud Single Mounting for  
 Round Bases  
 Specify Riv-Nut "R5" at right if  
 required. Wood Doors. Specify.



**N**  
 Flow Thru Button  
 Single Mount for  
 Round Bases  
 For Standard Metal, Wood  
 or Glass Doors. Specify.  
 "R5" or "B5" only.

**R3, R4 or R5**



Riv-Nut  
 R3 - 1/4-20 Thread  
 R4 - 5/16-18 Thread  
 R5 - 3/8-16 Thread  
**Note:** Not recommended for  
 Offset Pulls.

## Ron McCoy

Princeton educated, (currently a University Architect) and award winning architect Ron McCoy worked closely with Trimco engineers, to meet the challenging demand for creative and affordable hardware.



With the fOCAL Series, McCoy blends fundamental forms, functions, and materials into inspired shapes and accents that will add distinction to any project.

Modern yet timeless, the McCoy concepts refine each piece of hardware to the most elegant solution. Subtle visual appeal combines with strength and grace evident in a touch of the hand, making the fOCAL fixtures unique and exquisite.

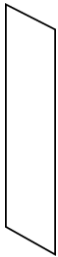
Quality of form.  
Quality of proportion.  
Quality of detail.

Trimco has designed all of these qualities into fOCAL, a full line of affordable architectural door hardware. Since good hardware is essential and cost control important, the fOCAL Series is manufactured to be the very best value.

In a variety of fashionings and in all standard finishes, fOCAL solves the problem of having to choose between generic and extravagantly priced hardware.

*You now have an outstanding new range of choices, all made in the U.S.A.*

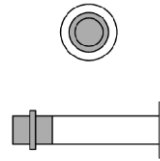
# fOCAL Products



TRIMCO#	7001	7009
H	16"	16"
W	4"	6"

### fOCAL Push Plate

No screw holes standard  
 Adhesive mounting standard

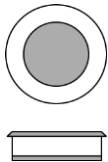


### TRIMCO# 7010

D	5/8"
L	3-3/8"
PL	1-1/4" dia.

### fOCAL Robe Hook & Stop

Hanger bolt standard

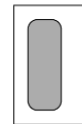


### TRIMCO# 7059

D	2-1/2"
---	--------

### fOCAL Flush Pull

Black interior standard  
 Standard prep 2-1/8" dia.  
 Fits BTB in a 1-3/8" door.

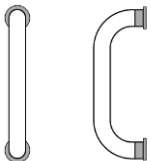


### TRIMCO# 7060 7061

H	4-1/4"	3-1/8"
W	2-3/4"	2-1/16"

### fOCAL Flush Pull

Black interior standard.

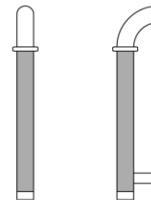


### TRIMCO# 7140 7141

D	3/4"	3/4"
CTC	6"	8"
P	2-1/4"	2-1/4"

### fOCAL Interior D-Pull

3 x 12" backplate standard  
 thru-bolt mounting standard  
 .S – 1" dia. Black style plates (no BP)  
 thru-bolt mounting standard

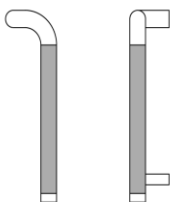


### TRIMCO# 7150

D	1"
CTC	10"
P	2-1/2"
OA	11-3/4"

### fOCAL Cane Pull

Matte Black Poly Grip Standard  
 BTB available **ADA**

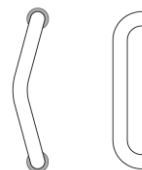


### TRIMCO# 7160

D	1"
CTC	10"
P	2-1/2"
L	11-3/4"
OFF	2-3/4"

### fOCAL Offset Cane Pull

Matte Black Poly Grip Standard  
 Specify hand  
 BTB available **ADA**



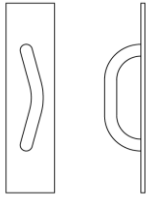
### TRIMCO# 7170

D	1"
CTC	10"
P	2-1/2"

### fOCAL Entry Wing Pull

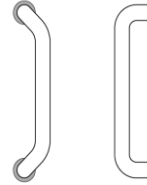
Black style plates standard  
**ADA**

## fOCAL Products



TRIMCO#	7180	7181
D	3/4"	3/4"
CTC	6"	8"
P	2-1/4"	2-1/4"

**fOCAL Interior Wing Pull**  
 3 x 12" plain backplate standard  
 thru-bolt mounting standard  
 .S - 1" dia. Black style plate (no BP)  
 thru-bolt mounting standard  
**ADA**



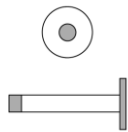
TRIMCO#	7191
D	1"
CTC	10"
P	2-1/2"

**fOCAL Offset Door Pull**  
 Black style plate standard  
**ADA**



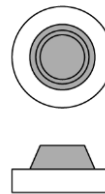
TRIMCO#	7196-1	7196-2	7196-3
CTC	8"	10"	12"

Changes the ambient by 20 degrees  
 BTB available  
**fOCAL Cool Touch Pull with PVC**



TRIMCO#	7208
D	1/2"
L	3-1/2"
PL	1-1/2" dia.

**fOCAL Pencil Stop**  
 Hanger bolt standard



TRIMCO#	7276	W7276
D	2-3/16"	2-3/16"
H	1"	1"

**fOCAL Wall Bumper**  
 Toggler standard  
 Concave (V) shown  
 Convex (X) available



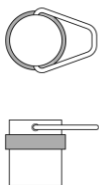
TRIMCO#	7278
OD	1-1/2"
P	1" dia.

**fOCAL Décor Wall Stop**  
 Concave- Black Rubber  
 Wood screw & plastic toggle standard



TRIMCO#	7280	7281
D	1-1/4"	1-3/4"
H	1-9/16"	2-1/4"

**fOCAL Floor Stop**  
 MS & Anchor Standard



TRIMCO#	7285
D	1-3/4"
H	2-1/4"

**fOCAL Stop with Bail & Hook**

# CLASSIC PUSH, PULLS AND GRIPS



**TRIMCO# 15 / STANLEY**  
 OA 5/8 x 3-1/2 x 20-1/2"  
**Classic Push Plate – Cast**  
 Solid Brass or Bronze gives rich, old-world feeling.  
 Rough textured interior on decorative plate.  
 Br, Bz, Pl  
 (Stanley = Mastercraft Bronze Line)



**TRIMCO# 16 / PIERCE**  
 OA 5/8 x 3-1/2 x 20-1/2"  
 G 1117-1  
 P 2-1/4"  
 CL 1-1/2"  
 CTC 5"  
 Br, Bz, Pl  
**Classic Pull Plate – Cast**  
 Alternate grip style available. **ADA**  
 Rough textured interior on decorative plate.  
 (Pierce = Mastercraft Bronze Line)



**TRIMCO# 17 / LAVA**  
 OA 7/16 x 3-5/8 x 20-1/2"  
 Br, Bz, Pl  
**Classic Push Plate – Cast**  
 Solid Brass or Bronze.  
 Classic Church Gothic.  
 Rough textured interior on decorative plate.  
 (Lava = Mastercraft Bronze Line)



**TRIMCO# 18 / LAVA-CAIRO**  
 OA 7/16 x 3-5/8 x 20-1/2"  
 G 1183-1  
 P 2-1/2"  
 CL 1-1/2"  
 CTC 5"  
 Br, Bz, Pl  
**Classic Pull Plate – Cast**  
 Alternate grip styles available. **ADA**  
 Rough textured interior on decorative plate.  
 (Lava-Cairo = Mastercraft Bronze)



**TRIMCO# 35**  
 OA 17-3/8"  
 B 2-3/4"  
 P 4-1/2"  
 CL 2-1/4"  
 CTC 12-1/2"  
 Br, Bz, Pl  
**Classic Door Pull – Cast**  
 Very sturdy. **ADA**



**TRIMCO# 50 / WENDELL**  
 OA 3/8 x 3-3/4 x 15"  
 Br, Bz, Pl  
**Classic Push Plate – Cast**  
 Timeless Elegant Style.  
 Rough textured interior on decorative plate.  
 (Wendell = Mastercraft Bronze Line)



**TRIMCO# 51 / WENDELL X 1117-1**  
 OA 3/8 x 3-3/4 x 15"  
 G 1117-1  
 P 2-1/4"  
 CL 1-1/2"  
 CTC 5"  
 Br, Bz, Pl  
**Classic Pull Plate – Cast**  
 Alternate grip styles available. **ADA**  
 Rough textured interior on decorative plate.  
 (Wendell x 1117-1 = Mastercraft Bronze Line)



**TRIMCO# 57**  
 OA 9-3/4"  
 B 1-3/4"  
 P 2-5/8"  
 CL 1-1/2"  
 CTC 8"  
 Br, Bz, Pl  
**Classic Grip – Cast**  
 With 1-3/4" dia. Roses.  
 Timeless Elegance. Can be mounted  
 On a variety of plates. **ADA**

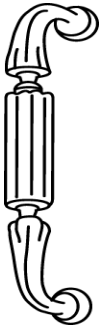
**Note:** Dimpled finish on decorative plate.  
 Rough textured interior on decorative plate.

Standard Mountings – See page 3.

B = base, CL = clearance, CTC = center to center, G = grip, OA = overall size,  
 P = projection



# CLASSIC PRODUCTS



TRIMCO#	58	59
OA	9"	10-15/16"
B	15/16"	15/16"
P	2-1/2"	2-1/2"
CL	1-1/2"	1-1/2"
CTC	8"	10"

Br, Bz

### Classic Grip – Cast

Available w/roses, specify.  
 Can be mounted to a variety of plates. **ADA**



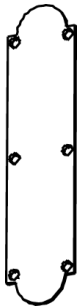
### TRIMCO# 111

OD	3-5/8"
ID	2-3/16"

Br, Bz, Pl

### Classic Escutcheon

Stamped ring.



### TRIMCO# 1070-2

OA	3-1/2 x 15"
----	-------------

Br, Bz

### Classic Push Plate

.050 Solid Brass Plate

Tasteful, refined style.



### TRIMCO# 1071-2

OA	3-1/2 x 15"
----	-------------

P	2-1/2"
---	--------

G	#58
---	-----

CL	1-1/2"
----	--------

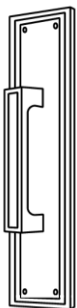
CTC	8"
-----	----

Br, Bz

### Classic Pull Plate

.050 Solid Brass Plate

**ADA**



### TRIMCO# 1900 / Aberdene X Velazquez Grip

OA	3-3/8 x 14-3/4"
----	-----------------

G	1136-1
---	--------

P	2-1/4"
---	--------

CL	1-1/2"
----	--------

CTC	6-1/4"
-----	--------

Br, Bz, Pl

### Classic Pull Plate – 1/8" - thick

Solid brass or bronze.

**ADA**

(Aberdene x Velazquez = Mastercraft Bz.)



### TRIMCO# 1901 / Aberdene

OA	3-3/8 x 14-3/4"
----	-----------------

Br, Bz, Pl

### Classic Push Plate – 1/8" thick

Solid brass or bronze, gives solid,  
 High achiever feeling.

(Aberdene = Mastercraft Bronze  
 Line)

**Standard Mountings - See page 3.**

# MODERN MASTERPIECES

For 65 years, TRIMCO has been designing and manufacturing exquisite, handcrafted door pulls. Available in solid brass, and bronze in an array of flawless finishes; this distinctive line of superior door pulls is meticulously engineered and fabricated to provide years of long life and lasting beauty.



<b>TRIMCO# 1301</b>	
<b>Door Pull – Cast</b>	
OA	10-1/2"
CTC	9"
Offset	2"



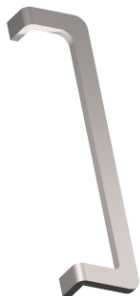
<b>TRIMCO# 1310 1310-1</b>		
<b>Door Pull – Cast</b>		
CTC	12"	8"
OFF	7"	4-3/4"
P	2-1/2"	2-1/2"
D	15"	9-3/4"



<b>TRIMCO# 1320</b>	
<b>Door Pull – Cast</b>	
OA	9"
OFF	5-1/2"
P	1-1/2"
CTC	7"



<b>TRIMCO# 1330</b>	
<b>Door Pull – Cast</b>	
H	13-1/2"
P	2-11/16"
OFF	7-5/8"
CTC	11"



<b>TRIMCO# 1340 1340-10</b>		
<b>Door Pull – Cast</b>		
L	23-1/4"	12-1/4"
P	2-1/2"	2-1/2"
OFF	5-1/4"	5-1/4"
CTC	21	10"



<b>TRIMCO# 1342</b>	
<b>Door Pull – Cast</b>	
L	18"
W	1-1/2"
P	2-3/8"
CTC	17-1/4"

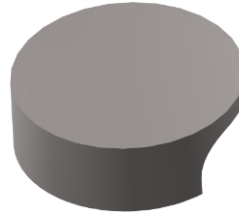
# MODERN MASTERPIECES



**TRIMCO# 1350L / 1358R**

**Door Pull – Cast**

H	12"
W	2-1/2"
P	5-1/4"
CTC	9"



**TRIMCO# 1360**

**Door Pull – Cast**

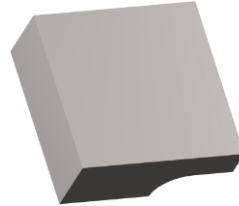
D	6"
OFF	3"
P	2"
CTC	4-3/4"



**TRIMCO# 1370**

**Door Pull – Cast**

D	9"
P	4-1/2"
W	2"
CTC	8"



**TRIMCO# 1380**

**Door Pull – Cast**

OA	5"
P	2"
CTC	4 x 2-3/4"



**TRIMCO# 1390**

**Door Pull – Cast**

H	8-1/4"
OFF	6"
P	2-1/2"
CTC	6"



**TRIMCO# 1410      1410-1**

**Door Pull – Cast**

L	23-3/4"	18"
W	2"	2"
P	2-1/2"	2-1/2"
CTC	22-3/4"	17"

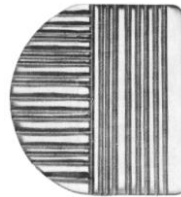


MasterCraft entry door hardware is a series of strong, elegant pulls that offer a unique opportunity to show entry doors as tasteful works of art. These hand-finished pulls provide a stunning first impression for any building. Cast in our own foundry in all standard architectural finishes.

No compromise in quality, design, or durability is made during the casting process. Careful machining, polishing, assembly, and finishing results in a product, which we present with pride.



**TRIMCO# ADON**  
OA 3" x 7"



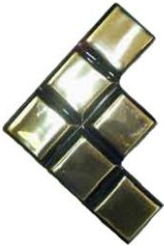
**TRIMCO# APOLLO**  
OA 7" x 7"



**TRIMCO# ARES**  
OA 5" x 9-1/4"



**TRIMCO# ATLAS**  
OA 2-3/4" x 13-3/4"



**TRIMCO# CRONUS**  
OA 5-3/4" x 5-3/4"



**TRIMCO# DAPHNE**  
OA 2-1/2" x 8"



**mastercraft**  
entry door hardware



**TRIMCO# HELANE**  
OA 5-3/4" x 8-3/4"



**TRIMCO# HELIO**  
OA 4-1/2" x 10-1/2"



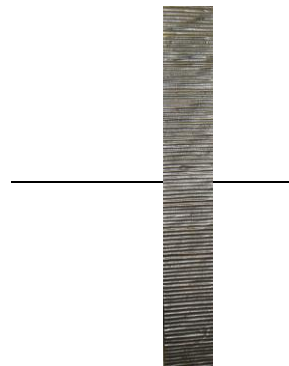
**TRIMCO# HERMES**  
OA 4-1/4" x 8-1/2"



**TRIMCO# HERO**  
OA 8-1/2" diameter



**TRIMCO# ISIS**  
OA 2-1/4" x 13-3/4"



**TRIMCO# JUNO**  
OA 1-3/4" x 18-1/2"



**TRIMCO# LUNA**  
OA 6-1/4" x 7-3/4"



**TRIMCO# MEDEA**  
OA 6" x 7-3/4"


**mastercraft**  
 entry door hardware


**TRIMCO# MIDAS**  
OA 4" x 10-1/4"



**TRIMCO# OLYMPUS**  
CTC 10"



**TRIMCO# OLYMPUS**  
CTC 8"



**TRIMCO# SATURN**  
OA 4-1/2" X 8-1/2"



**TRIMCO# SOLAR**  
OA 4-1/2" x 9-1/4"



**TRIMCO# VENUS**  
OA 2-1/4" x 15"

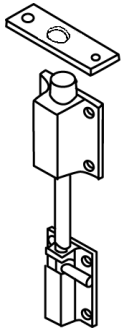


**TRIMCO# VESTA**  
OA 3-1/4" x 10-1/4"



**TRIMCO# ZEUS**  
OA 7" X 7"

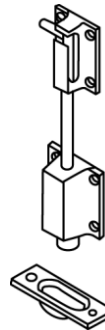
# Bolts and Latches



<b>TRIMCO#</b>	<b>243T</b>
OA	3/8" x 15"
M	Brass/Bronze
TH	1-1/2"

Br, Bz, Pl

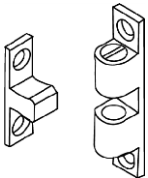
**Cane Bolt Top - Cast**  
 Decorative Bolts for pairs of doors.  
 Top door bolt with surface and mortise strikes included.



<b>TRIMCO#</b>	<b>244B</b>
OA	3/8" x 30"
M	Brass/Bronze
TH	1-1/2"

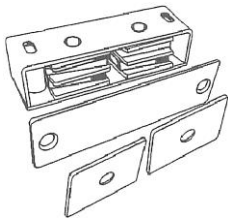
Br, Bz, Pl

**Cane Bolt Bottom - Cast**  
 Decorative Bolts for pairs of doors.  
 Bottom door bolt with cup strike included.



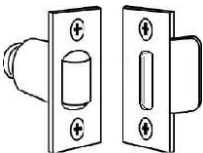
TRIMCO#	802	804
OA	3/8" x 1-15/16"	1/2" x 2-3/4"
M	Brass	Brass
STR	5/16" x 1-1/8"	13-32" x 1-9/16"
BHMA	B03291	B03291

**3-Way Cabinet Catch**  
 Machine Finish



<b>TRIMCO#</b>	<b>810</b>
OA	3-1/4" x 1" x 3/4"
M	Zinc over Steel
STR	3-1/8" x 7/8" or (2) 1-1/8" x 13/16"

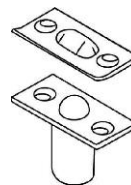
**Heavy Duty Magnetic Catch**



<b>TRIMCO#</b>	<b>1554</b>
OA	1-1/8" X 2-1/4"
DP	2-1/4"
BHMA	E09101

Br, Bz, Pl

**Roller Latch**  
 Fits residential latch bolt prep.  
 Adjustable Nylon Roller  
 3 Types of Strikes available  
 "B" Strike Shown

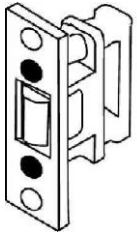


TRIMCO#	1555	1555L
OA	1" x 2-1/8"	1" x 2-1/8"
DP	1-3/16"	1" x 3/16"
STR	1-1/16" x 2-1/8"	1-3/8" x 2-1/8"

Br, Bz, Pl

**Closet Ball Catch**  
 Light Duty ball latch  
 Adjustable roller force  
 1555 is shown

# LATCHES AND STRIKES



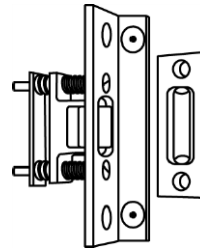
**TRIMCO# 1559**  
 OA 1/8" x 1" x 3-3/8"  
 DP 1-13/16"  
 BHMA E09091  
 Br, Bz, PL  
**Heavy Duty Roller Latch**  
 Indicate strike choice – A, B or C  
 Adjustable Nylon Roller



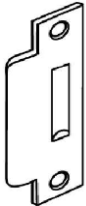
**TRIMCO# 1559A**  
 OA 3/16" x 1-3/4" x 2-1/4"  
 Br, Bz, PI  
**Strike only for Heavy duty  
 Roller Latch 1559 (1559WA)**  
**Cast**  
 2-1/4" Full Lip.



**TRIMCO# 1559B**  
 OA 3/32" x 2" x 2-3/4"  
 Br, Bz, PI  
**Strike only for Heavy duty  
 Roller Latch 1559 (1559WB)**



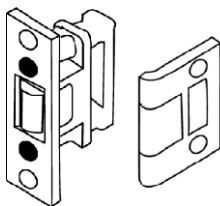
**TRIMCO# 1559BL**  
 OA 1/8" x 1-1/2" x 4-1/2"  
 DP 2-1/2"  
 BHMA E09111  
 Br, Bz, PI  
**1559 Heavy Duty Roller Latch with  
 Angle Stop Face Plate..**  
 Adjustable Nylon Roller.  
 For Stop-less Frames



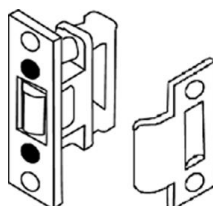
**TRIMCO# 1559C**  
 OA 3/32" x 2" x 4-7/8"  
 Br, Bz, PI  
**Strike only for Heavy duty  
 Roller Latch 1559 (1559WC)**

ORDER as per part  
 numbers BELOW

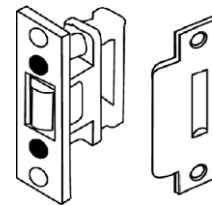
**TRIMCO# 1559W**  
**Heavy Duty Roller Latch**  
Specify Strike: A, B, or C  
(Included in Price)



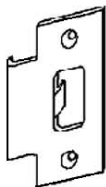
1559WA



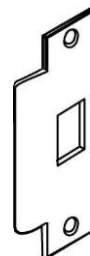
1559WB



1559WC



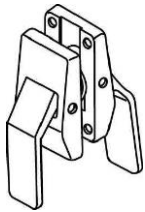
**TRIMCO# 3651**  
 OA 3/32" x 2" x 2-3/4"  
 BHMA 115.3  
 Br, Bz, PI  
**Strike - 2-3/4"**  
 Adjustable tang.



**TRIMCO# 3652**  
 OA 3/32" x 2" x 4-7/8"  
 BHMA 115.2  
 Br, Bz, PI  
**Strike - ASA**  
 Adjustable tang.



# DEPENDABLE PUSH/PULL LATCHES



<b>TRIMCO#</b>	<b>1562A</b>
BS	5" (1505) *
STR	2-3/4" (3651) *

Br, Bz, Pl, SS

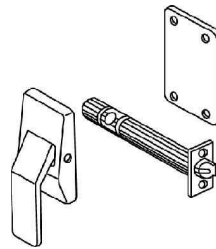
**Push/Pull Latch**  
**Levers Down ADA/UL Listed**

<b>TRIMCO#</b>	<b>1562AE</b>
BS	5" (1505) *
STR	2-3/4" (3651) *

Br, Bz, Pl

**Exit Only Latch**  
**Lever Down ADA/UL Listed**

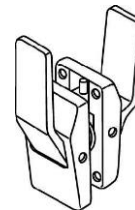
Exit / Entrance Only -  
 Used when only one side of opening is designed for entrance or exit. Ideal for secured areas. Must Specify Handing



<b>TRIMCO#</b>	<b>1563A</b>
BS	5" (1505) *
STR	2-3/4" (3651) *

Br, Bz, Pl

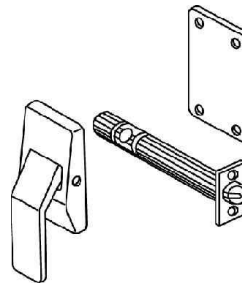
**Push/Pull Latch**  
**Levers Up ADA/UL Listed**  
 Must Specify Handing



<b>TRIMCO#</b>	<b>1591A</b>
BS	5" (1505) *
STR	2-3/4" (3651) *

Br, Bz, Pl

**Reverse Push or Pull Latch**  
 Requires monitoring personnel to maintain pressure on lever paddle to prevent subject from exiting room. Made to order, may not be returned. ADA  
 Must Specify Handing



<b>TRIMCO#</b>	<b>1562Q or 1562M</b>
BS	2-3/4"
STR	4-7/8"

Br, Bz, Pl, SS

**Push/Pull Mortise Lock**  
**Levers Down ADA/UL Listed**  
 Customer to supply cylinder.

**1562Q55 Classroom Function**  
 Auxiliary latch deadlocks latchbolt (Standard)

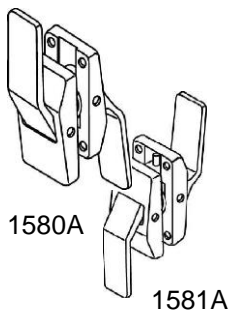
**1562Q30 Privacy/bathroom**  
 Deadbolt by thumbturn lever inside or by emergency release tool outside.

**1562Q65 Dormitory/entrance**  
 Deadbolt by key outside or by thumbturn lever inside. Other functions are available, please inquire.

<b>TRIMCO#</b>	<b>1580A</b>
BS	5" (1505) *
STR	2-3/4" (3651) *

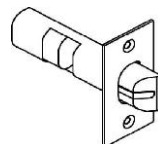
Br, Bz, Pl, SS

**Push/Pull Latch, Push Up, Pull Down**  
**ADA/UL Listed**  
 Specify 1581A for Push Down, Pull Up  
 Must Specify Handing



<b>TRIMCO#</b>	<b>1502</b>	<b>1503</b>	<b>1505</b>
BS	2-3/4"	3-3/4"	5"

Push/Pull latch only Br, Bz, Pl  
**Latchbolts for 1500 series** **UL Listed**



Note: PDQ mortise chassis supplied as standard. (Q)

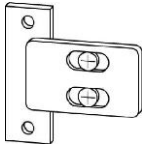
Alternate (M) Corbin Russwin chassis available at an additional cost & lead-time.

**NOTE:** Add suffix "P" to part number to have levers engraved "Push" and "Pull".  
**1592LLE** (Lead Lined Escutcheon Plate) and **1592LLT** (Lead Lined Latch Tube) may be specified by buyer at extra cost. Specify **1592RK** Replacement Kit to replace latches on doors originally prepped for Roller Latch with Push/Pull Latch.

\* Either 2-3/4", 3-3/4" or 5" Backset and 2-3/4" strike (**3651**) are supplied standard with Push/Pull latches. 7" backset and/or ASA 4-7/8" (**3652**) Strike must be specified by buyer at extra cost.

Patent #4003593 & 4986583

# Quiet Coordinators & Coordinator Accessories



<b>TRIMCO#</b>	<b>3090</b>
OA	1-1/2" x 2-7/8"
	Br, Bz, Pl

**Carry Open Bar Assembly**  
 For 3090 Series Coordinators  
 Maximum adjustment 1/2"




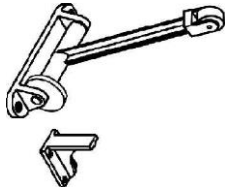
<b>TRIMCO#</b>	<b>3092</b>
OA	1-5/8" X 5/8" X 18"
BHMA	4.1.1 Type 25
	600 Black

**Retracting Door Coordinator**  
 For use on pairs of doors with or without astragal.


Not for use on unequal pairs of doors or with exposed vertical rods.

See Coordinator brochure for more information.

For openings 72" to 96" 




<b>Trimco #</b>	<b>3093</b>
OA	2-5/16" x 6-9/16"
BHMA	4.1.1 Type 25
	Br, Bz, Pl

**Coordinator - Cast**  
 Drop Arm Type. Two nylon rollers and set screw adjustment standard. 

TRIMCO#	3094A2	3094B1	3094B2	3094B3
W (of opening)	43" - 53"	53" - 63"	63" - 75"	75" - 87"
BHMA	4.1.1 Type 21	4.1.1 Type 21	4.1.1 Type 21	4.1.1 Type 21
Coordinator Size	32"	52"	52"	52" 600 Black

**Stop Mounted Coordinator w/Filler Bar - **  
 Patent #5033234

TRIMCO#	3094B4	3094C4	3094D
W (of opening)	87" - 95"	95" - 107"	Special Application
BHMA	4.1.1 Type 21	4.1.1 Type 21	4.1.1 Type 21
Coordinator Size	52"	60"	Custom Size 600 Black

**Stop Mounted Coordinator w/Filler Bar - **  
 Patent #5033234



**3094** Easily configured for unequal pairs of doors. When ordering coordinators, specify opening width, leaf sizes, and finish of companion hardware.

Panic Strike preps available.

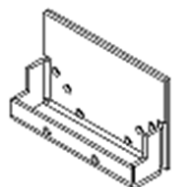
See Coordinator brochure for more information.

TRIMCO#	3094-1	3094-2	3094-3	3094-4	3094-5	3094-6
OA	12"	24"	36"	48"	60"	72"
						600 Black




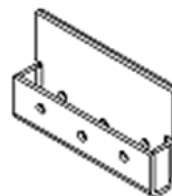
### Filler Bar Only

For the 3094 Coordinator For mounting stop-applied hardware. In conjunction with the 3094.




<b>TRIMCO#</b>	<b>3095</b>
OA	3-1/4" x 5"
SW	7/8" - 2-1/4"
M	Steel
	600 Black

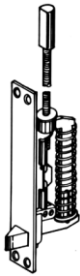
**Mounting Bracket**  
 For mounting stop-applied hardware. In conjunction with the 3094. 




<b>TRIMCO#</b>	<b>3096</b>
OA	3" x 5"
S	over 2-1/4"
M	Steel
	600 Black

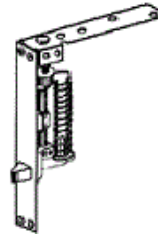
**Mounting Bracket**  
 For mounting stop-applied hardware. In conjunction with the 3094. 

# QUIET, LOW CLOSER FORCE AUTO FLUSHBOLTS, DUBL-BOLT




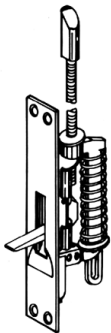
**TRIMCO# 3810**  
 BHMA 4.4 Type 25  
 Br, Bz, Pl, SS

**Automatic Flushbolt**  
 Metal Door - To be used in pairs on the inactive leaf of metal doors.  
 Rated 3 Hours  
 Patent #5076620  
 Can be used with the 3820 or 3850 Firebolt.




**TRIMCO# 3815L**  
 BHMA 4.4 Type 25  
 Br, Bz, Pl, SS

**Automatic Flushbolt**  
 Wood Doors - To be used in pairs on the inactive leaf of wood doors.  
 Rated 1-1/2 Hours  
 Patent #5076620  
 Can be used with the 3825 or 3850 Firebolt.




**TRIMCO# 3820**  
 BHMA 4.4 Type 25  
 Br, Bz, Pl, SS

**Semi-Automatic Flushbolt**  
 Metal Doors - For use at top of the inactive leaf of metal doors. Used with the 3810.  
 Rated 3 Hours  
 Patent #5004277  
 Can be used with the 3850 Firebolt.

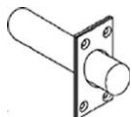


**TRIMCO# 3825L**  
 BHMA 4.4 Type 25  
 Br, Bz, Pl, SS

**Semi-Automatic Flushbolt**  
 Wood Doors - For use at top of the inactive leaf of wood doors. Use with the 3815  
 Rated 20 Minutes  
 Patent #5004277  
 Can be used with the 3850 Firebolt.

NOTE: Designed for use in pairs (top & bottom) with TRIMCO Door Coordinators. All Automatic and Semi-Automatic Flushbolts are supplied with Trimkits. Specify Finish. See Automatic Flushbolt brochure for more information. All of the above can be used with the 3850 Firebolt.

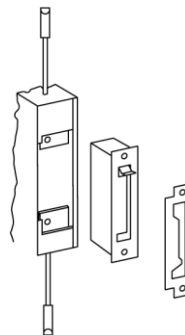
TRIMCO#	3830A	3830AL	3830M	3830WL
	<b>Finish Kit</b>	<b>Long Finish Kit</b>	<b>Finish Kit</b>	<b>Long Finish Kit</b>
	Automatic Flushbolt	Automatic Flushbolt	Semi-Automatic Flushbolt	Semi-Automatic Flushbolt
	Metal Door	Wood Door	Metal Door	Wood Door
				Br, Bz, Pl, SS



**TRIMCO# 3850**  
 Br, Bz, Pl, SS

**Firebolt**  
 For use with the 3810, 3815L, 3820 and 3825L to replace the bottom bolt. Can also be used in conjunction with vertical rod panic devices.

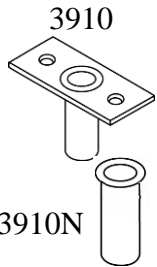
Patent Pending



**TRIMCO# 3900**  
 Br, Bz, Pl, SS

**Dubl-Bolt**  
 Two Point Flushbolt for Inactive Door of a pair of Hollow Metal Doors.  
**ADA / UL PENDING**  
 Patent Pending.

## FLUSH BOLTS AND DUST PROOF STRIKES

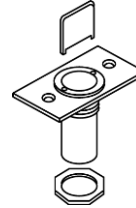


(No Face Plate)

TRIMCO#	3910	3910N
OA	3/32" x 1-5/16" x 2-1/2"	
DP	1-1/2"	
BHMA	L04021	

Br, Bz, PI, SS

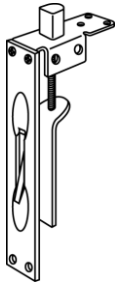
**Dust Proof Strike**  
 To omit faceplate add suffix "N".  
 Available in stainless steel.



TRIMCO#	3911
OA	3/32" x 1-5/16" x 1-5/8"
DP	1-1/2"
BHMA	L04021

Br, Bz, PI, SS

**Adjustable Dust Proof Strike**  
 For carpet or threshold.  
 Available in stainless steel.



TRIMCO#	3913	W3913
OA	1" x 6-3/4" x 2-1/2"	1" x 6-3/4" x 2-1/2"
TH	3/4"	3/4"
M	Extruded	Wrought



Br, Bz, PI

Patent #4315647

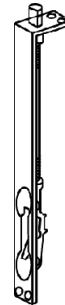
**Flush Extension Bolt - Wood Door**  
 Includes metal dust cover. Mounts at top corner of wood door.



TRIMCO#	3915
OA	1-1/4" X 6-3/4"
TH	11/16"
ROD	6" - 30"
BHMA	L04081

Br, Bz, PI

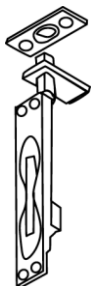
**Flush Extension Bolt**  
 Metal Door



TRIMCO#	3916
OA	1" X 15-1/2"
TH	5/8"
BHMA	L04081

Br, Bz, PI

**Flush Extension Bolt**  
 One piece flushbolt for non-labeled, tall wood doors. Other lengths available.



TRIMCO#	3917	W3917	3917ET
OA	1" x 6-3/4"	1" x 6-3/4"	1" x 6-3/4"
TH	11/16"	11/16"	1-3/16"
ROD	12"	12"	12"
M	Extruded	Wrought	Extruded
BHMA	L04081/L04251	L04081/L04251	L04081

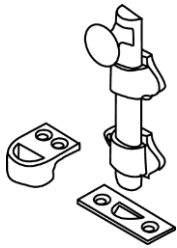


Br, Bz, PI

Patent #4315647

**Flush Extension Bolt - Metal Door - 1-1/2" Bolthead (3917-1B) standard; 3" Bolthead (3917-3B) also available.** Longer Rod Lengths available on request.

# BOLTS



TRIMCO#	3920-4	3920-8
OA	4-1/4"	8"
TH	1/2" - 1"	1" - 2"

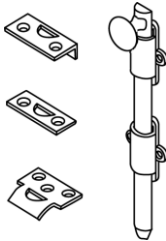
Br, Bz, Pl

### Dutch Door Bolt – Cast

Cast Strike for application without shelf and Flat Mortise Strike supplied.

Other lengths available

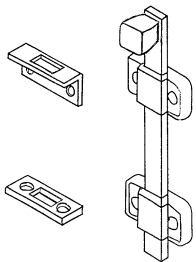
Universal Strike supplied. Please specify angle or mortise strike.



### TRIMCO# 3921

#### Heavy Duty Surface Bolt

Available in 8", 12", 18", 24". Please specify length and universal, angle or mortise strike. Custom lengths available.

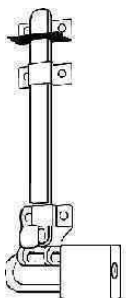


TRIMCO#	3922	3923
OA	2" x 8"	2" x 12"
TH	1-1/8"	1-1/8"
P	1-5/16"	1-5/16"
M	Steel 3/4" x 1/4"	Steel 3/4" x 1/4"
BHMA	L04161	L04161

Br, Bz, Pl, SS

**Heavy Duty Surface Bolt** - Available in stainless steel.

Furnished with Surface and Mortise Strikes. Custom Lengths Available. 



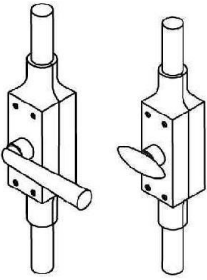
### TRIMCO# 3922L

#### Locking Heavy Duty Surface Bolt

Accepts padlock (furnished by buyer)  
Furnish with surface and Mortise Strike  
With Torx Screws for security. Custom Lengths made to order upon request.



# BOLTS & GUIDES



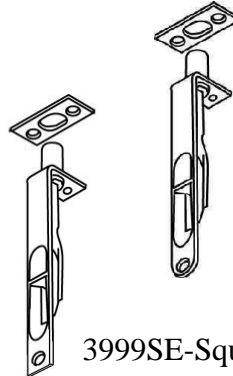
TRIMCO#	3928K	3928L
OA	1-9/16" X 6-13/16"	1-9/16" X 6-13/16"
	up to 90" rod	up to 90" rod
ROD	5/8", half round	5/8", half round

Br, Bz, Pl

### Cremone Bolt - Cast

Decorative Bolt for pairs of doors. Mortise and surface strikes included.  
 "K" supplied with oval knob. "L" supplied with lever operator.  
 Specify height and hand of door.

### 3999-Round-Edge

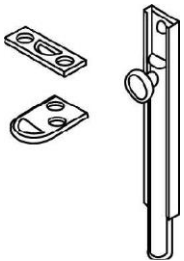


TRIMCO#	3999	3999SE
OA	3/4" x 6"	
TH	1"	
D	1/2" Bolt	
BHMA	L04201	

Br, Bz, Pl

### Flushbolt - 6"

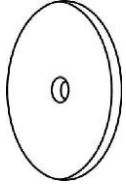
Corner Mount for unlisted wood doors. Add "SE" for Square Edges.



TRIMCO#	4873	4874	4876	4882
L	3"	4"	6"	12"
W	5/8"	5/8"	5/8"	5/8"
TH	5/8"	7/8"	1"	2-1/4"
BHMA	L04151	L04151	L04151	L04151
	<b>Surface Bolt 3</b>	<b>Surface Bolt 4</b>	<b>Surface Bolt 6</b>	<b>Surface Bolt 12</b>

Universal and Mortise strikes supplied.  
 Custom lengths available.

# DRAWER PULLS AND ACCESSORIES



TRIMCO#	BP1	BP2	BP3	BP4
D	1"	1-1/4"	1-1/2"	2"
T	1/8"	1/8"	1/8"	1/8"

Br, Bz, Pl, SS

**Back Plates for Pulls**  
 1/8" thick



TRIMCO#	553
OA	5/8" x 3-1/4"
CTC	3"
CL	3/4"
BHMA	B02012

**Drawer Pull**  Br, Bz, Pl



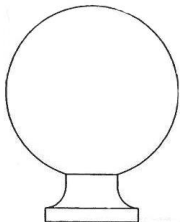
TRIMCO#	562-3	562-4	562-96mm
OA	3-13/16"	4-5/16"	104mm
CTC	3-1/2"	4"	96mm
CL	7/8"	7/8"	7/8"
D	5/16"	5/16"	5/16"
BHMA	B02012	B02012	B02012

**Drawer Pull**  Br, Bz, Pl, SS



TRIMCO#	*571-3-710CU	571-6	571-8	571-10
CTC	3"	6"	8"	10"
D	1/2"	1/2"	1/2"	1/2"
O/A	5-1/2"	8"	10"	12"

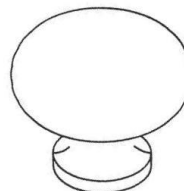
**CABINET PULL**  
 \*made with CuVerro alloy



TRIMCO#	7300-1	7300-1-1/4
D	1"	1-1/4"
P	15/16"	1-1/8"

**Cabinet Knobs**

Br, Bz, Pl

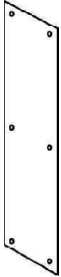


TRIMCO#	7301-1	7301-1-1/4
D	1"	1-1/4"
P	1-1/4"	1-1/2"

**Cabinet Knob**

Br, Bz, Pl

# PULLS, PUSH AND PULL PLATE SETS



TRIMCO#	1001-1	1001-2	1001-3	1001-3P
OA	3" x 12"	3-1/2" x 15"	4" X 16"	4" X 16"
BHMA	J301	J301	J301	J301
				Black Plastic 1/8"
				Br, Bz, Pl, SS

TRIMCO#	1001-9	1001-11
OA	6" x 16"	8" x 16"
BHMA	J301	J301

### Push Plate .050

Plastic Plates - .125 other standard colors and clear available.



TRIMCO#	1010-1	1010-2	1010-3
OA	3" x 12"	3-1/2" x 15"	4" X 16"
P	1-7/8"	1-7/8"	1-7/8"
G	1117-1	1117-1	1117-1
CL	1-1/2"	1-1/2"	1-1/2"
CTC	5"	5"	5"
BHMA	J405	J405	J405

Br, Bz, Pl, SS

### Pull Plate - .050 - ADA

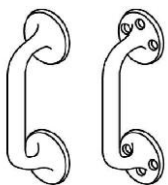


TRIMCO#	1012-2	1012-3
OA	3-1/2" x 15"	4" X 16"
P	2"	2"
G	1109-1	1109-1
CL	1-1/2"	1-1/2"
CTC	5-1/2"	5-1/2"
BHMA	J405	J405

Br, Bz, Pl,

### Pull Plate - .050 - ADA

NOTE: All Metal Plates on this page are .050" thick.  
 Custom sizes available.



TRIMCO#	1102S	1102T
OA	7-1/2"	7-1/2"
P	2-3/16"	2-3/16"
CL	1-1/2"	1-1/2"
CTC	5-1/2"	5-1/2"
BHMA	J401	J401
<b>Pull - Cast</b>	Surface	Thru-bolt
<b>ADA</b>	Mount	Mount

Br, Bz, Pl, Al



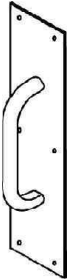
TRIMCO#	1109-1
OA	6-3/16"
P	1-7/8"
CL	1-1/2"
CTC	5-1/2"
BHMA	J401

Br, Bz, Al, Pl

### Pull - Cast ADA



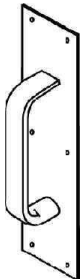
# PULL PLATES



TRIMCO#	1013-2	1013-2B	1013-3	1013-3B
OA	3-1/2" x 15	3-1/2" x 15"	4" x 16"	4" x 16"
P	2"	2"	2"	2"
G	1193-1	1193-2	1193-1	1193-2
CL	1-1/2"	1-1/2"	1-1/2"	1-1/2"
CTC	5-1/2"	8"	5-1/2"	8"
BHMA	J405	J405	J405	J405

Br, Bz, Al, SS

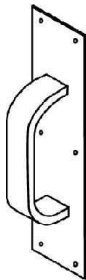
## Pull Plate - ADA



TRIMCO#	1014-2	1014-2B	1014-3	1014-3B
OA	3-1/2" x 15	3-1/2" x 15"	4" x 16"	4" x 16"
P	2"	2"	2"	2"
G	1199-1	1199-2	1199-1	1199-2
CL	1-1/2"	1-1/2"	1-1/2"	1-1/2"
CTC	6"	8"	6"	8"
BHMA	J405	J405	J405	J405

Br, Bz, Al, SS

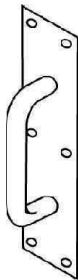
## Pull Plate - ADA



TRIMCO#	1015-2	1015-2B	1015-3	1015-3B
OA	3-1/2" x 15	3-1/2" x 15"	4" x 16"	4" x 16"
P	2"	2"	2"	2"
G	1139-1	1139-2	1139-1	1139-2
CL	1-1/2"	1-1/2"	1-1/2"	1-1/2"
CTC	6"	8"	6"	8"
BHMA	J405	J405	J405	J405

Br, Bz, Al, SS

## Pull Plate - ADA



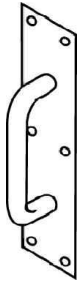
TRIMCO#	1017-2	1017-2B	1017-3	1017-3B	1017-3C
OA	3-1/2" x 15	3-1/2" x 15"	4" x 6"	4" x 16"	4" x 16"
P	2"	2"	2"	2"	2"
G	1194-1	1194-2	1194-1	1194-2	1194-3
CL	1-1/2"	1-1/2"	1-1/2"	1-1/2"	1-1/2"
CTC	6"	8"	6"	8"	10"
BHMA	J705	J705	J705	J705	J705

Br, Bz, Al, SS

## Pull Plate - ADA

**NOTE:** All Plates on this page are .050" thick. "B & C" Suffix indicates larger size grip  
Custom sizes available.

# PUSH / PULL PLATES, ANTIVANDAL TRIM



TRIMCO#	1018-2	1018-2B	1018-3	1018-3B
OA	3-1/2" X 15"	3-1/2" X 15"	4" x 16"	4" X 16"
P	3-1/8"	3-1/8"	3-1/8"	3/8"
G	1195-1	1195-2	1195-1	1195-2
CL	2"	2"	2"	2"
CTC	8"	10"	8"	10"
BHMA	J405	J405	J405	J405

Br, Bz, Al, SS

Pull Plate - .050 - ADA



TRIMCO#	1056-4
OA	1/16" x 8" x 16"
P	1-7/8"
G	1139-2
CL	1-1/2"
CTC	8"
BHMA	J405

Br, Bz, SS

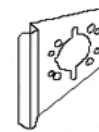
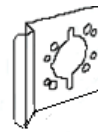
Pull Plate - .050" thick. ADA  
 Specific 1041-4 for plate only.

TRIMCO#	1082-4	1082-6	1082-8
OA	4" X 5-3/8"	4X6X5-3/8"	2-7/8" X 8"

## Cylindrical Lock Guards

Installs in minutes to retrofit or for new construction.

SS



**NOTE:** 1082-8 order as follows: 1082-8-RHR or 1082-8-LHR

(Must specify RHR or LHR) For Aluminum Store-Front Doors

Cylinder hole 1-1/4" dia, CTC of mtg posts 7", Backset 1-1/8"

## 1096HA - Anti-Vandal Trim Handle Only

Same Anti-Vandal Trim used in TUF-LOK System, but Trim Handle only.  
 Specify Handing.

## 1097HA - No Astragal

Options Available:

SP = Lugs mated to Dead Bolt, Panics, Rim and Exit devices.

FC = Flush Cylinder. Specify 1-1/4" or 1-1/2" dia.

NC = No Cylinder Cutout

BTB = Special Back-to-Back Mounting

Specify Handing

ADA

Available: **Cu<sup>+</sup>** (w/o PVC coating)



## 1096TL TUF-LOK System -

Anti-Vandal Trim System includes: 1562M Push latch with modified paddle, the Anti-Vandal Trim Pull Handle, and Mortise Lock. Customer supplies the cylinder.

Also Available:

1097TL - No Astragal



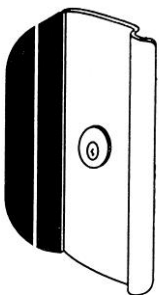
Options Available:

XX = Lugs mated to Mortise Lock if other than Corbin-Russwin.

FC = Flush Cylinder. Specify 1-1/4" or 1-1/2" diameter

ADA

Available: **Cu<sup>+</sup>** (w/o PVC coating)



TRIMCO#	1096VD98-99HA
Face	6-5/8" x 11"
Grip	Black PVC

SS

## Anti Vandal Pull

Made to work with Von Duprin 98 or 99 Exit Device, Cylinder rotated 90° for non-handing. Each pull comes with a cylinder holder. Made from 316 SS. Also available: Anti-vandal pull with NO CYLINDER: Order, 1096VD98-99HA-NC

# ANTI-VANDAL PULLS cont., POCKET DOOR PULLS



<b>TRIMCO#</b>	<b>1097VD98-99HA</b>
Face	2-5/8" x 11"
T	1/8"
Grip	Black PVC


SS

**Anti Vandal Pull-NARROW LOOK**  
 Made to work with Von Duprin 98 or 99 Exit Device, Cylinder rotated 90° for non-handing. Each pull comes with a cylinder holder. NEW narrower look fabricated from 316 Stainless Steel. Also available: Antivandal pull with no cylinder- Specify: 1097VD-98-99HA-NC



## **TRIMCO# 1098RG –Outswing Dr. Safety and Security Lock Set – For Outswing Doors**


For details see 1098RG brochure  
 Supplied with mortise lock I.C. cylinder, PDQ cylindrical lever set with and without hold back feature, interior lever, small or large format. With Astragal.

Available:  (w/o PVC coating)



## **TRIMCO# 1099RG–Inswing Door Safety and Security Lock Set – For Inswing Doors**

For details see 1098RG brochure  
 Supplied with mortise lock I.C. cylinder, PDQ cylindrical lever set with and without hold back feature, interior lever, small or large format. No Astragal.

Available:  (w/o PVC coating)

## **TRIMCO# 1074-1**

Br, Bz, SS

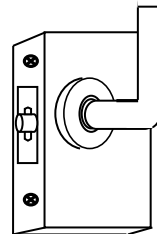
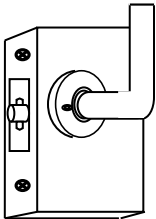
### **Pocket Door Pull**

Privacy Only.  
 2-3/8 backset  
 Positive latching, device is handed  
 Emergency access outside  
 Levers install vertically only  
 10 Urbān levers to choose from  
**Specify when ordering**

### **ADA**

See our 1074 flyer for more information

Available:  (levers only)



## **TRIMCO# 1074-3**

Br, Bz, SS

### **Pocket Door Pull**

Passage Only.  
 2-3/8 backset  
 Levers install vertically only  
 10 Urbān levers to choose from  
**Specify when ordering**

### **ADA**

See our 1074 flyer for more information

Available:  (levers only)

## **TRIMCO# 1074-2**

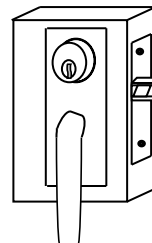
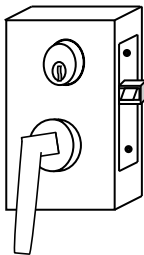
Br, Bz, SS

### **Pocket Door Pull**

Mortise lockset with Rose (standard)  
 2-3/8 backset  
 Positive latching, device is handed  
 Emergency access outside  
 Levers install vertically only  
 10 Urbān levers to choose from  
**Specify when ordering**

**ADA** Available:  (levers only)

See our 1074 flyer for more information



## **TRIMCO# 1074-2E**


Br, Bz, SS

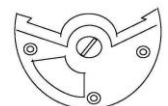
### **Pocket Door Pull**

Mortise lockset with Escutcheon  
 2-3/8 backset  
 Levers install vertically only  
 10 Urbān levers to choose from  
**Specify when ordering**

### **ADA**

See our 1074 flyer for more information

Available:  (levers & Escutcheon only)



**Note:** Also available with **5004 indicator** - Order 1074-2-XXX-5004, or 1074-2E-XXX-5004. (XXX = lever style) specify

DP = depth. OA = overall size, OD = outside dimension, ID = inside dimension

# FLUSH/POCKET PULLS

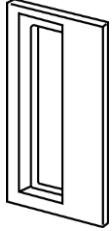


<b>TRIMCO#</b>	<b>1059</b>
OD	2-1/2"
ID	1-3/4"
DP	7/8"

Br, Bz, Pl

### Flush Cup Pull

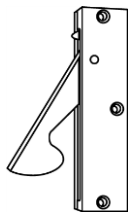
Use #7059 for Focal styling.



<b>TRIMCO#</b>	<b>1060</b>	<b>1061</b>
OA	2-3/4" x 4-1/4"	2-1/16" x 3-1/8"
DP	13/16"	5/8"
BHMA	J403	J403

Br, Bz, Pl

**Flush Pull** - Fine finish casting with black interior. Specify for same finish inside cup and outside.

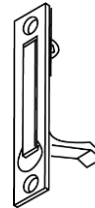


<b>TRIMCO#</b>	<b>1062</b>
OA	5/16" x 1" x 4-1/4"

Br, Bz, Pl

### Concealed Door Pull

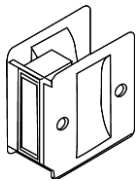
Non-handed. Side Mount. Mortises into edge and face of pocket door



<b>TRIMCO#</b>	<b>1063</b>
OA	3/4" x 3-7/8"

Br, Bz, Pl

**Concealed Door Pull**  
Edge Mount.

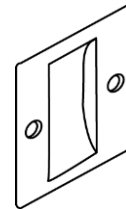


<b>TRIMCO#</b>	<b>1064</b>
OA	2-1/2" x 2-3/4"
BHMA	D08021

Br, Bz, Pl

### Pocket Door Pull

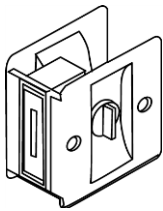
Passage Function.  
1-3/8" and 1-3/4" Thick Doors.  
For use on doors not requiring privacy.



<b>TRIMCO#</b>	<b>1064FCP</b>
OA	2-1/2" x 2-3/4"
BHMA	D02202

Br, Bz, Pl

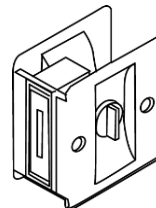
**Flush Cup Pull**  
Can be used for pairs of doors.



<b>TRIMCO#</b>	<b>1065*</b>
OA	2-1/2" x 2-3/4"
BHMA	D08031

Br, Bz, Pl

### Pocket Door Pull \*



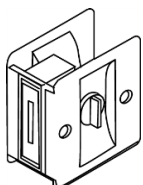
<b>TRIMCO#</b>	<b>1065CD*</b>
OA	2-1/2" X 2-3/4"
BHMA	D08031

Br, Bz, Pl

**Sliding Door Lock \***  
For use on connecting doors.  
Thumb turn on both sides.

Privacy Function. 1-3/8" Thick Doors. For use on bathroom and bedroom doors. Thumb turn on interior, safety release on exterior.

\* Can be made to fit 1-3/4" Thick Door, must specify when ordering. P/N 1065CD-175.



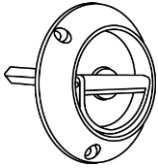
<b>TRIMCO#</b>	<b>1065PA</b>
OA	2-1/2" x 2-3/4"
BHMA	D08031

Br, Bz, Pl

### Sliding Door Lock \*

For use on patio and exterior doors.  
Thumb turn on interior only.

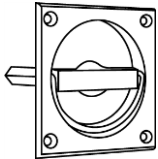
# FLUSH PULLS & POCKET DOOR PULLS



TRIMCO#	1066S	1066S-516	1066S-38
D	3-9/16"	3-9/16"	3-9/16"
S	9/32"	5/16"	3/8"

Br, Bz, PI

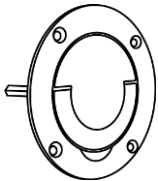
**Flush Pull - Cast**  
 Spindle Type. Surface Mount.



TRIMCO#	1067	1067-516	1067-38
OA	3" x 3"	3" x 3"	3" x 3"
D	2-1/2"	2-1/2"	2-1/2"
S	9/32"	5/16"	3/8"

Br, Bz, PI

**Flush Pull - Cast**  
 Spindle Type. Mortise prep. Surface mount.

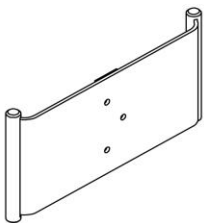


TRIMCO#	1068	1068-516	1068-38
D	4-1/4"	4-1/4"	4-1/4"
S	9/32"	5/16"	3/8"

Br, Bz, PI


**Flush Pull - Cast**  
 Spindle Type. Mortise Prep. Surface Mount.

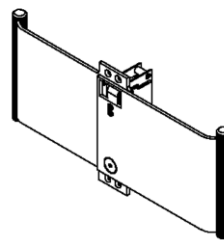
NOTE: Spindle set on diamond standard, can be set on square. Specify.  
 No interference with standard mortise lock case on 1-3/4" doors.  
 For special prep specify lockset. Extra Charge.  
 See order form of this product on our website.



**TRIMCO# 1069**  
 Br, Bz, SS

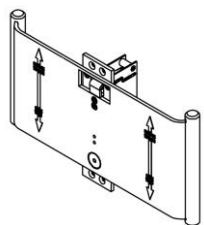
**Pocket Door Pull**  
 Non-Latching. Passage Only.  
 Black nylon handles.  
 Standard model for walls upto 5-1/2" thick. Larger available. Specify.  
 Custom sizes available – specify **ADA**

See 1069 brochure for more information  
 Available:  (w/o PVC coating)




**TRIMCO# 1069FP**  
 Br, Bz, SS

**Pocket Door Pull FULL PRIVACY**  
 Pocket Door Pull  
 Latching on interior side only.  
 Passage on exterior side. Supplied with emergency access tool.  
 Black nylon handles.  
 Standard model for walls 5-1/2" thick. Larger available. Specify.  
 Custom sizes available, at an additional charge.  
 specify HANDING. **ADA**

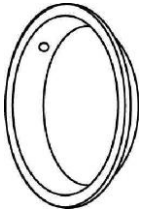


**TRIMCO# 1069L**  
 Br, Bz, SS

**Pocket Door Pull Latching**  
 Pocket Door Pull,  
 Standard model for walls upto 5-1/2" thick. . Custom sizes available – specify. **ADA**  
 Available:  (w/o PVC coating)

D = diameter, OA = overall size, S = spindle

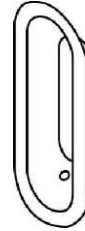
# FLUSH PULLS



<b>TRIMCO #</b>	<b>242</b>
D	2-1/2"
DP	3/8"

Br, Bz, Pl

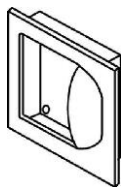
**Standard Flush Pull**  
 For sliding doors.  
 Stamped.



<b>TRIMCO#</b>	<b>248</b>
OA	1-1/2" x 4"
DP	7/16"

Br, Bz, Pl

**Standard Flush Pull**  
 For sliding doors.  
 Stamped.

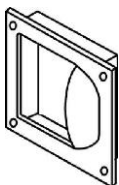


1111A

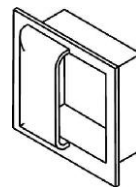
<b>TRIMCO#</b>	<b>1111A/1111B</b>
OA	5" x 5"
DP	1-1/8"
BHMA	J403

Br, Bz, SS

**Flush Pull - Anti-Vandal**  
 Mounting Lugs on back of Cup.  
 Specify **1111B** for mounting on face.  
 For high-traffic, exposed, rough-service areas. Specially engineered as exit trim on school doors with interior, panic hardware. Easy exterior access during the day; vandal resistant at night.  
 Specify **1111LB** for anti-vandal flush pulls BTB on each side with two shims-clean exterior face plate.torx screws can be supplied if specified.  
**ADA** Patent pending



1111B



<b>TRIMCO#</b>	<b>1111C</b>
OA	6" x 6"
DP	1-1/2"
BHMA	J403

Br, Bz, SS

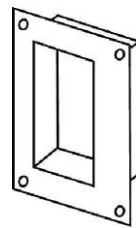
**Flush Pull - Anti-Vandal**  
 Meets California Access Requirements. **ADA**  
 See 1111C brochure for more information.  
 Also available 1111C-BTB



<b>TRIMCO#</b>	<b>1113</b>
OA	1-1/4" x 3"
DP	13/32"

Br, Bz, Pl

**Flush Pull - Cast**  
 For Sliding doors only.



<b>TRIMCO#</b>	<b>1115</b>
OA	3-1/2" x 4-3/4"
DP	13/16"
BHMA	J403

Br, Bz, SS

**Flush Pull**  
 Specify **1115B** for pair of 1115 prepped for BTB mounting.  
 For mounting screws in cup, order **1115C**. Also available: **1115P (pair- prep for BTB with Lugs)**

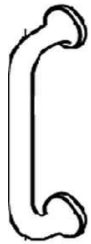


<b>TRIMCO#</b>	<b>1198-1-XX.710CU</b>
OD	1-1/4"
Sizes 12", 18", 24", 30", 36", 42", 48"	
XX= bar size.	
Bactericidal Copper Grab Bar <b>Cu<sup>+</sup></b>	

**Also available in Stainless Steel**  
**TRIMCO # 1198-1-XX-.630**  
 SS

CL = clearance, CTC = center-to-center, M = material, OA = overall size, P = projection, OD= outside diameter, CU = CuVerro

# PULLS & GRIPS



<b>TRIMCO#</b>	<b>1117-1</b>
OA	6-1/8"
P	1-7/8"
CTC	5"
CL	1-1/2"
BHMA	J401

Br, Bz, Pl

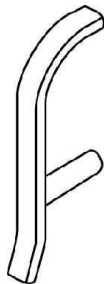
**Pull - Cast**



<b>TRIMCO#</b>	<b>1120</b>
OA	7-1/2"
P	2-1/2"
CTC	6"
CL	1-7/8"
BHMA	J401

Br, Bz, Pl

**Classic Pitcher Grip - Cast**  
**ADA**



<b>TRIMCO#</b>	<b>1135</b>
OA	9"
M	3/8" x 3/4"
P	3-3/16"
CTC	6"
CL	2"
BHMA	J401

Br, Bz, SS

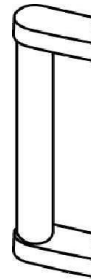
**Hospital Grip**  
**ADA**



<b>TRIMCO#</b>	<b>1139-1</b>	<b>1139-2</b>
OA	6-3/8"	8-3/8"
M	1" x 3/8"	1" x 3/8"
P	1-7/8"	1-7/8"
CTC	6"	8"
CL	1-1/2"	1-1/2"
BHMA	J401	J401

Br, Bz, Al, SS

**Grip, ADA**



<b>TRIMCO#</b>	<b>1147</b>
OA	10-1/2"
M	1-1/2" x 1-1/2"
P	2-7/8"
CTC	10"
CL	1-5/8"
BHMA	J402

SS

**Grip**

Specify **1147B** for pairs, mounted Back to Back with Mounting Plates. Other lengths available. **ADA**

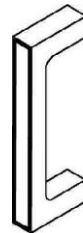


<b>TRIMCO#</b>	<b>1134</b>	<b>1134B</b>
OA	9-1/16"	
P	3-1/2"	
CTC	5"	
CL	2"	
BHMA	J401	

Br, Bz, Pl

**Hospital Grip - Cast**

Specify **1134B** for pair of 1134 prepped for BTB mounting. **ADA**



<b>TRIMCO#</b>	<b>1136 / VELAZQUEZ</b>
OA	7-3/8"
P	2-1/16"
CTC	6-1/4"
CL	1-1/2"

Br, Bz, Pl

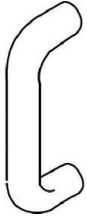
**Grip - Cast**

Specify **1136G** for pair of 1136 prepped for BTB mounting. **ADA** (Velazquez = Mastercraft Bronze Line)

**NOTE:** All Grips may be mounted to a variety of standard and custom plates.

**Standard Mountings - See Page 3.**

## GRIPS continue...



TRIMCO#	1150	1151
OA	6-1/2"	8-1/2"
M	1/2" RD	1/2" RD
P	2"	2"
CTC	6"	8"
CL	1-1/2"	1-1/2"
BHMA	J401	J401

Br, Bz, PI, SS

**GRIP** - Custom Back to Back mounting available. **ADA**



TRIMCO#	1191-1	1191-2	1191-3	1191-4
OA	8-3/4"	10-3/4"	11"	13"
M	3/4" RD	3/4" RD	1" RD	1" RD
P	3-1/4"	3-1/4"	3-1/2"	3-1/2"
CTC	8"	10"	10"	12"
CL	2"	2"	2-1/4"	2-1/4"
BHMA	J402	J402	J402	J402

Br, Bz, Al, PI, SS

**GRIP - OFFSET**

fOCAL option available. **ADA**

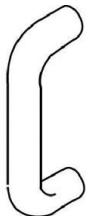


TRIMCO#	1191-4J	1191-5	1191-5J
OA	13-1/4"	19"	19-1/4"
M	1-1/4" RD	1" RD	1-1/4" RD
P	4-1/8"	3-1/2"	4-1/8"
CTC	12"	18"	18"
CL	2-1/4"	2"	2-1/4"
BHMA	J402	J402	J402

Br, Bz, Al, PI, SS

**GRIP - OFFSET**

fOCAL option available. **ADA**



TRIMCO#	1193-1	1193-2
OA	6"	8-1/2"
M	1/2" X 3/4" RD	1/2" X 3/4" RD
P	2"	2"
CTC	5-1/2"	8"
CL	1-1/2"	1-1/2"
BHMA	J401	J401

Br, Bz, PI, SS

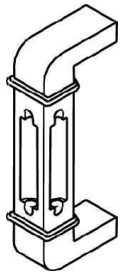
**GRIP -**

fOCAL option available. **ADA**

**Standard Mountings - See Page 3.**

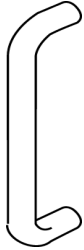


## GRIPS continue...


**TRIMCO# 1183-1 / CAIRO**

OA	5-1/2"
P	2-1/8"
CTC	5"
CL	1-1/4"

Br, Bz, PI

**Grip - Cast  
 ADA**


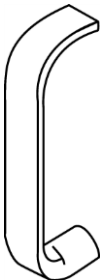
TRIMCO#	1194-1	1194-2	1194-3	1194-4
OA	6-3/4"	8-3/4"	10-3/4"	12-3/4"
M	3/4" Round	3/4" Round	3/4" Round	3/4" Round
P	2-3/4"	2-3/4"	2-3/4"	2-3/4"
CTC	6"	8"	10"	12"
CL	2"	2"	2"	2"
BHMA	J401	J401	J401	J401

Br, Bz, PI, SS

**Grip - Custom BTB mounting available. ADA**

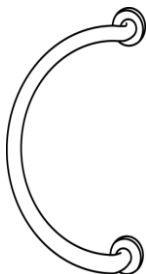

TRIMCO#	1195-1	1195-2	1195-3	1195-3J	1195-6	1195-6J
OA	9"	11"	13"	13-1/4"	19"	19-1/4"
M	1" Round	1" Round	1" Round	1-1/4" Rd	1" Round	1-1/4" Rd
P	3"	3"	3"	3-1/2"	3"	3-1/2"
CTC	8"	10"	12"	12"	18"	18"
CL	2"	2"	2"	2-1/4"	2"	2-1/4"
BHMA	J401	J401	J401	J401	J401	J401

Br, Bz, PI, SS

**Grip - fOCAL option is available. ADA**


TRIMCO#	1199-1	1199-2
OA	6-1/2"	8-1/2"
M	1" Half Round	1" Half Round
P	2"	2"
CTC	6"	8"
CL	1-1/2"	1-1/2"
BHMA	J401	J401

Br, Bz, PI, SS

**Grip  
 ADA**


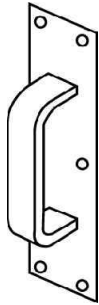
TRIMCO#	1748	1748-1
OA	6-3/4" x 12-3/4"	7" x 13"
M	3/4" Round	1" Round
P	3-3/8"	3-1/2"
CTC	12"	12"
CL	2-5/8"	2-1/2"
BHMA	J402	J402

Br, Bz, PI, SS

**Grip Offset**

 fOCAL option is available. Priced individually. Style plates required, specify. **ADA**
**NOTE:** These pulls are covered by warranty if ordered with BP4 Back Plates ad "L" or "M" mounting.

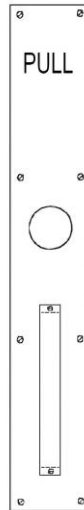
# HEAVY GAUGE PUSH / PULL PLATES



TRIMCO# 1802-4	
OA	1/8" x 4" x 16"
P	2"
G	1139-1
PP	1807-4
CL	1-3/4"
CTC	6"
BHMA	J407

Br, Bz, Pl

**Pull Plate**  
Beveled top and bottom  
**ADA**



TRIMCO# 1802-25	
OA	1/8" x 4" x 25"
P	2"
G	1139-1
PP	1807-4
CL	1-3/4"
CTC	6"
BHMA	J407

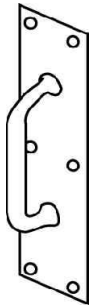
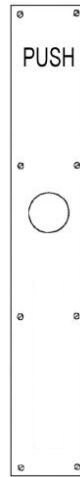
Br, Bz, Pl

**Pull Plate**  
Beveled top and bottom  
**ADA**

**Also available:**  
1802-25-PL = Engraved Pull  
1802-25-PH = Engraved Push

1802-25CC-PL = with 1-1/4" dia. Cutout X Engraved Pull

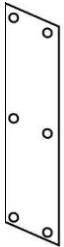
1802-25CC-PH = with 1-1/4" dia. Cutout X Engraved Push



TRIMCO# 1804-4	
OA	1/8" x 4" x 16"
P	2-1/4"
G	1117-1
PP	1807-4
CL	1-1/2"
CTC	5"
BHMA	J407

Br, Bz, SS

**Pull Plate**  
Beveled top and bottom  
**ADA**



TRIMCO#	1807-4	1807-25	1809-4
OA	1/8" x 4" x 16"	1/8" x 4" x 25"	1/8" x 4" x 16"
BHMA	J304	J304	J304

Br, Bz, SS

Beveled top & bottom

/ Beveled 4 sides



TRIMCO#	1820	1820-11
OA	1/8" x 3-1/2" x 16-1/2"	1/8" x 8" x 16-1/2"
P	1-1/2"	1-1/8"
CL	1-1/8"	1-1/8"
BHMA	J303	J303

Br, Bz, SS

**Push / Pull Plate**



1822-1

1822-2

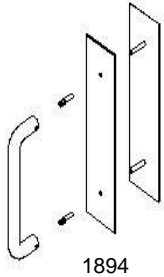
TRIMCO#	1822	1822-1	1822-2
OA	1/8" x 2" x 3-3/4"	1/8" x 2" x 3-3/4"	1/8" x 3" x 4-1/2"
P	7/8"	7/8"	7/8"
CL	3/4"	3/4"	3/4"

Br, Bz, SS

**Cylinder Pull**  
for Dead Bolt only.  
2-1/8" opening.

**NOTE: All 1800 Series plates are 1/8" thick.**

# PULLS & PUSH AND PULL PLATES



1894

TRIMCO#	1894-3	1895-3	1896-4B
OA	3-1/2" x 15"	3-1/2" x 15"	4" x 16"
CTC	6"	8"	10"
D	3/4"	1"	1"

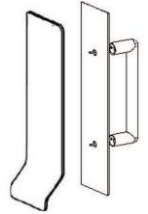
Br, Bz, SS

### Cylinder Pull Plates

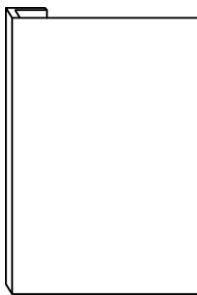
1807 Plate X 1194 Series

**Note:** Other Sizes Available, please inquire or see our flyers.

Also available in



1896-4B

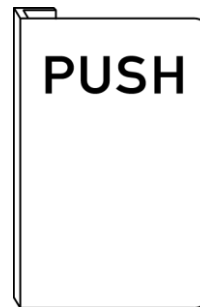


### TRIMCO# 9550

OA	3/16" x 6" x 9" Lgth
M	Ext. Aluminum
P	1-1/2"
CTC	7"
CL	1-1/4"

Al

### Push / Pull

 Square corners. Smooth, Clean surface is ideal for engraving (extra cost). **ADA** when mounted on narrow stile aluminum doors.


### TRIMCO# 9551

OA	3/16" x 6" x 9" Lgth
M	Ext. Aluminum
P	1-1/2"
CTC	7"
CL	1-1/4"

Al

 Round corners. Smooth, Clean surface is ideal for engraving (extra cost). **ADA** when mounted on narrow stile aluminum doors.

Surface on through-bolt mounting



### TRIMCO# 9560

OA	3-1/2" x 11-3/8"
M	628 Pull x 628 Insert
P	2-7/8"
CTC	10"
BR	A

### 9561

OA	3-1/2" x 11-3/8"
M	628 Pull x Black Insert
P	2-7/8"
CTC	10"
BR	A

Al

### Offset Entrance Door Pull

 Aluminum Pull x Insert **ADA**


### TRIMCO# 9566

OA	9" Lgth
M	Ext. Aluminum
CTC	7"

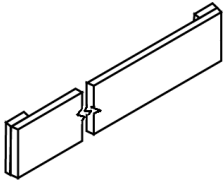
Al

### Push / Pull

Smooth, Clean surface is ideal for engraving your logo up to 2-1/2" max. (extra cost). Customize your store front with this pull.

**ADA** when mounted on narrow stile aluminum doors. Anodizing available at extra cost. Installs above any type lock. Made in USA..

# RUGGED, STYLISH PUSH AND PULL BARS

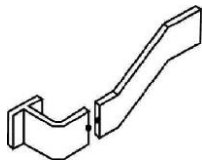


TRIMCO#	1630	1630B
P	3/4"	3/4" exterior, 7/8" interior bar
CTC	Specify	Specify
M	3/8" x 2-1/2"	3/8" x 2-1/2"
BHMA	J501	J501

Br, Bz, Pl, SS

**Push Bar** (single bar)

**Push Bar** (Pair, BTB)



TRIMCO#	1633
P	3-1/8"
CTC	Specify
M	3/8" x 2-1/2"
BHMA	J501

Br, Bz, Pl, SS

**Push Bar**  
Single Bar  
**ADA**



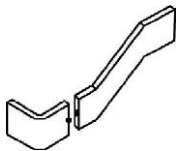
TRIMCO#	1633-1
P	3-1/4"
CTC	14"
M	3/8" x 1-1/2"

Br, Bz, Pl, SS

**Push Bar**  
Single Bar  
**ADA**

NOTE: Push/Pull Bars and Sets are custom made and not returnable. Specify Center to Center where appropriate.

**Standard Mountings** - See Page 3.



TRIMCO#	1637
P	2-1/2"
CTC	Specify
M	3/8" x 1-1/4"
BHMA	J501
	Less pad

Br, Bz, Al, SS, Pl

**Push Bar**  
Single Bar  
**ADA**



TRIMCO#	J1637
P	2-1/2"
CTC	Specify
M	3/8" x 1-1/4"
BHMA	J501
	Less pad

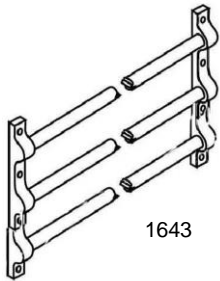
S

**"J" hook ONLY for the 1637 Push Bar**

CTC = center to center, M = material, OA = overall size, P = projection

BR = brackets, CTC = center to center, D = diameter, GP = grip projection, M = material, P = projection

# PUSH AND PULL BARS

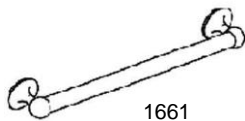


1643

TRIMCO#	1643	1644
BR	5/8" x 8"	5/8" x 11"
D	5/8"	5/8"
P	1"	1"
CTC	Specify	Specify
M	5/8" OD Tube	5/8" OD Tube
BHMA	J501	J501
	3 Bar Set	4 Bar Set

Br, Bz, PI

## Push Bar Set

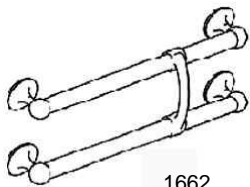


1661

TRIMCO#	1661	1662
D	1"	1"
P	2-1/2"	2-1/2"
GP		3-1/2"
CTC	Specify	Specify
M	1" OD Tube	1" OD Tube
BHMA	J501	J502
	Single Bar	2 Bar and Grip

Br, Bz, PI

## Push Bar Set ADA



1662

NOTE: Push/Pull Bars and Sets are custom made and not returnable.  
Specify Center to Center where appropriate.  
**Standard Mountings** - See Page 3.



TRIMCO#	1698
P	2-3/8"
CTC	Specify
M	3/8" x 2-1/2"
CL	2"
BHMA	J501

Br, Bz, PI, SS

## Push Bar Single Bar ADA

# FULL LENGTH DOOR PULLS



TRIMCO#	1160	1161	1162
D	1"	1-1/4"	1-1/2"
PD	3/4"	1"	1-1/4"
OA	specify	specify	specify
CTC	specify	specify	specify
P	2-1/2"	2-3/4"	3"
CL	1-1/2"	1-1/2"	1-1/2"
END	square	square	square

Br, Bz, Al, SS

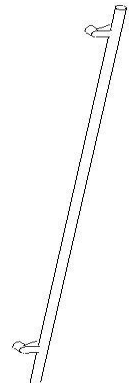
**Door Pull**  
**ADA**



TRIMCO#	1163	1164	1165
D	1"	1-1/4"	1-1/2"
PD	3/4"	1"	1-1/4"
OA	specify	specify	specify
CTC	specify	specify	specify
P	2-1/2"	2-3/4"	3"
CL	1-1/2"	1-1/2"	1-1/2"
END	round	round	round

Br, Bz, Al, SS

**Door Pull**  
**ADA**



TRIMCO#	1170	1171	1172
D	1"	1-1/4"	1-1/2"
Offset Post	Cast	Cast	Cast
OA	specify	specify	specify
CTC	specify	specify	specify
P	2-1/2"	2-3/4"	3"
CL	1-1/2"	1-1/2"	1-1/2"
END	square	square	square

Br, Bz, Al, SS

**Full Length Offset Door Pull**  
**ADA**

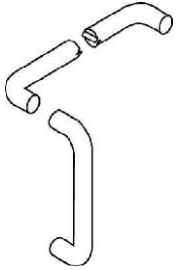


TRIMCO#	1173	1174	1175
D	1"	1-1/4"	1-1/2"
Offset Post	Cast	Cast	Cast
OA	specify	specify	specify
CTC	specify	specify	specify
P	2-1/2"	2-3/4"	3"
CL	1-1/2"	1-1/2"	1-1/2"
END	round	round	round

Br, Bz, Al, SS

**Full Length Offset Door Pull**  
**ADA**

# PUSH / PULL BARS AND SETS



TRIMCO#	1729	1731	1732	1746	1746-1
D	3/4"	1"	1"	1-1/4"	1-1/4"
P	3"	3-1/4"	3-1/4"	3-1/2"	3-1/2"
CTC	Pull – 10" Push - Specify	Pull – 10" Push - Specify	Pull – 12" Push - Specify	Pull – 18" Push - Specify	Pull – 12" Push - Specify
M	3/4" Round	1" Round	1" Round	1-1/4" Round	1-1/4" Round
BHMA	J504	J504	J504	J504	J504

Br, Bz, Al, SS

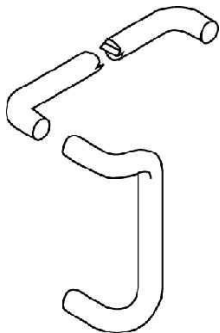
### Push / Pull Bar Set

fOCAL option is available

**ADA**

NOTE: Push/Pull Bars and Sets are custom made and not returnable. Specify Center to Center where appropriate.

**Standard Mountings – See page 3.**



TRIMCO#	1737	1738	1747	1747-1
D	1"	1"	1-1/4"	1-1/4"
P	3-1/4"	3-1/4"	3-1/2"	3-1/2"
CTC	Pull – 10" Push – Specify	Pull – 12" Push – Specify	Pull – 18" Push – Specify	Pull – 12" Push – Specify
M	1" Round	1" Round	1-1/4" Round	1-1/4" Round
BHMA	J504	J504	J504	J504

Br, Bz, Pl, Al, SS

### Push / Pull Set

fOCAL option is available

**ADA**

TRIMCO#	1740	1741	1745
D	3/4"	1"	1-1/4"
P	3"	3-1/4"	3-1/2"
CTC	Specify	Specify	Specify
M	3/4" Round	1" Round	1-1/4" Round
BHMA	J501	J501	J501

Br, Bz, Pl, Al, SS

### Push Bar

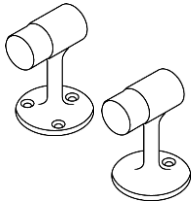
fOCAL option is available

**ADA**

NOTE: Push/Pull Bars and Sets are custom made and not returnable. Specify Center to Center where appropriate.

**Standard Mountings - See Page 3.**

# STOPS

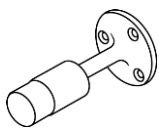


TRIMCO#	1200	1201	1201-5	1201CK
B	2-1/4"	2-1/4"	3"	2-1/4"
H	3-1/8"	3"	5"	3"
BHMA	L02131	L02131	L02131	L02131

Br, Bz, PI, SS

### Floor Stop - Cast

1201CK is a heavy duty, high-abuse school design with reduces tampering and loss of rubber bumper. For surface mounting with wood screws, use 1200.

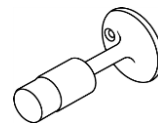


TRIMCO#	1204
P	3-1/8"
CTC	Specify
M	3/8" x 2-1/2"
BHMA	J501

Br, Bz, PI

### Base Stop

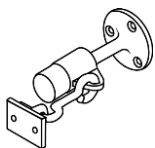
For surface mounting with wood screws, use 1204.



TRIMCO#	1205
P	3-1/8"
CTC	Specify
M	3/8" x 2-1/2"
BHMA	J501

Br, Bz, PI

### Base Stop

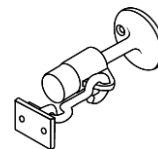


TRIMCO#	1206
P	3-1/8"
CTC	Specify
M	3/8" x 2-1/2"
BHMA	J501

Br, Bz, PI

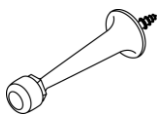
### Base Stop and Holder - Cast

For surface mounting with wood screws, use 1206.



TRIMCO#	1207
B	2-1/4"
P	3-3/4"
EYE	7/8" x 2-1/4"
HOOK	2-3/4"
BHMA	L01351

### Base Stop and Holder - Cast



TRIMCO#	1208
B	1-3/16"
P	3-11/32"
BHMA	L02031

Br, Bz, PI

### Base Stop - Cast

WS.



TRIMCO#	1209
B	1-1/4"
H	2"

PI

### Heavy Duty Stop

Ideal for high abuse installations like prisons, schools, heavy doors. Installs with quick-set cement. Requires 1-1/2" diameter cored hole.

Available for wall mount #1209W, hold open feature #1209HO, and #1209HA with extra strong stainless steel shaft and larger rubber.



## STOPS...continue



<b>TRIMCO#</b>	<b>1209HA</b>
B	1" DIA
H	3" Rubber
	SS

**Extra Heavy Duty Door Stop**  
5" long, 1" DIA Stainless Steel Shaft  
Also available 1209HAHO with hold open feature #1209HO, and #1209HA with extra strong stainless steel shaft and longer rubber.

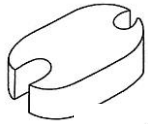


<b>TRIMCO#</b>	<b>1211</b>
R	.22"
B	1-1/2"
H	1.43"
M	CAST
BHMA	L02141/L02161

Br, Bz, PI

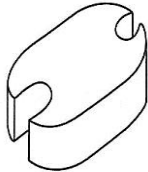
### Universal Dome Stop

See 1211 Brochure.



<b>TRIMCO#</b>	<b>1211CH</b>	<b>1211CL</b>
R	3/4"	1/2"
		Al

**Carpet Riser**  
Specify Stop Finish

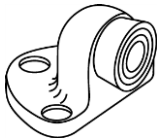


<b>TRIMCO#</b>	<b>W1211</b>
R	1/8"
B	1-3/4" x 2"
H	1"
M	Wrought
BHMA	L02141

Br, Bz, SS

### Universal Dome Stop

Patent #4,209,876

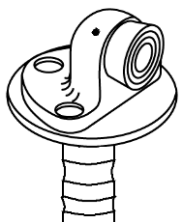


TRIMCO#	1214	1214H	1214CK
B	1-3/4" x 2-1/2"	1-3/4" x 2-1/2"	1-3/4" x 2-1/2"
H	1-3/4"	2-1/4"	2-1/4"
			Supplied with Torx Screws
BHMA	L02121		

Br, Bz, PI

**Door Stop - Cast - Heavy Duty.** (3 fasteners)

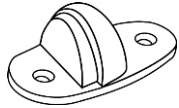
1214CK is a heavy duty, high-abuse, school design which reduces tampering and loss of rubber bumper.



<b>TRIMCO#</b>	<b>1214CK x 1268CK</b>
OA	5-7/8" x 2-1/2"

**Heavy-Duty Stop**  
Pinned, screwed and recessed rubber resists vandalism. Torx. Requires 3" diameter cored hole and Quick-crete.

# STOPS...continue, DOOR HOLDERS

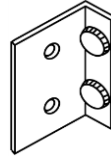


TRIMCO# 1215CKU	
H	1-1/2"
L	3/16"
CTC	2-1/5"

Br, Bz, Pl

### Universal Stop

Supplied with Torx Screws upon request at extra charge. See 1215CKU Brochure.



1217P

TRIMCO#	1217P	1217S
OA	1-1/2" x 2"	1-1/2" x 2"
	Pair of Doors	Single Doors

### Angle Stop

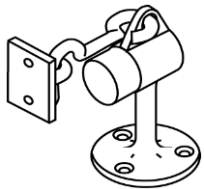
For use on Stopless Frames



TRIMCO#	1220-5	1221-4	1221-4FF
B	1-3/8" x 2"	1-3/8" x 2"	1-3/8" x 2"
H	5-25/32"	4-27/32"	4-27/32"
F	Full Finish	Spray Finish	Full Finish
BHMA	L01391	L01381	L01381

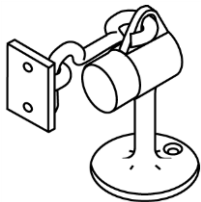
Br, Bz, Pl

### Door Holder - Cast



TRIMCO# 1223	
B	2-1/4"
H	3-5/8"
FASTENERS	Wood Screws
EYE	7/8" x 1-1/2"
HOOK	2-3/4"
BHMA	L01371

### Floor Stop / Holder - Cast



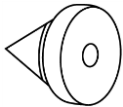
TRIMCO#	1224	1224-5
B	2-1/4"	2-7/8"
H	3-5/8"	5-3/4"
FASTENERS	Combo Pack	Combo Pack
EYE	7/8" x 1-1/2"	7/8" x 2-1/4"
HOOK	2-3/4"	2-3/4"
BHMA	L01371	L01371

Br, Bz, Pl

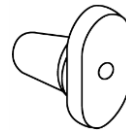
### Floor Stop / Holder - Cast

Combo Pack. For surface mounting using wood screws, use 1223.

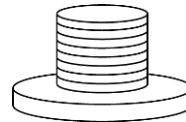
# ADAPTERS, STOPS AND SILENCERS



**TRIMCO# 1229A**  
 OA 1/2" x 1/2"  
 BHMA L03011  
**Silencers for Metal Frames**  
 Sold in multiples of 100



**TRIMCO # 1229B**  
 OA 5/8" x 3/4"  
 BHMA L03021  
**Silencers for Wood Frames**  
 Sold in multiples of 100



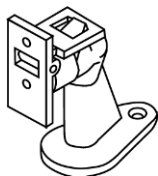
**TRIMCO# 1229EL**  
 H 1/4"  
 D 1-1/8"  
**Elevator Bumper - Grey**  
 Sold in multiples of 125



TRIMCO#	1231	1233
B	1-5/8" x 2-1/2"	1-3/8" x 2-3/4"
H	2"	2-7/8"
BHMA	L02181	L02181

**Floor Stop - Cast**  
 Combo Pack

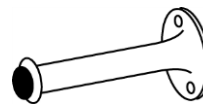
Br, Bz, PI



**TRIMCO# 1234**  
 B 1-1/2" x 2-3/4"  
 H 3"  
 STR 1" X 2"  
 BHMA L01361

Br, Bz, PI

**Floor Stop, Holder - Cast**  
 Combo Pack



**TRIMCO# 1235**  
 B 1-3/8"  
 P 2-15/16"  
 BHMA L02041

Br, Bz, PI

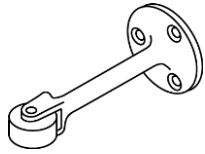
**Base Stop - Cast**  
 WS

# STOPS / HOLDERS



**TRIMCO# 1240**  
 Door Opening 70° to 100°

**Hinge Pin Stop**  
 619 finish only



TRIMCO#	1244	1244-6
B	2"	2"
P	4-1/4"	6"
BHMA	L02191`	L02201

Bz., PI

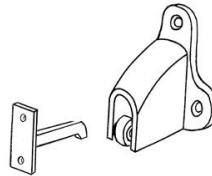
**Roller Stop - Cast**



TRIMCO#	1245
B	1-11/16" x 2-1/4"
P	3"
BHMA	L02211

Br, Bz, PI

**Roller Stop - Cast**



TRIMCO#	1254
OA	2-3/4" x 2-1/2"
STR	1" x 2"
STR-P	2-1/8"
BHMA	L01291

Br, Bz, PI

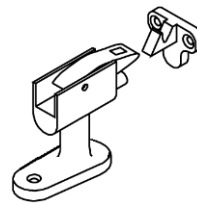
**Holder / Wall Strike - Cast**  
 Combo Pack



TRIMCO#	1255
L	7-1/16"
W	2-7/16"
TH	1-3/4"
BHMA	L01411

Br, Bz, PI

**Plunger Door Holder - Cast**  
 Extra rugged cast brass or bronze



TRIMCO#	1257M
B	3-1/4" x 1-3/4"
H	2-3/4"
STR	1-5/8" x 2"
BHMA	L01241

Br, Bz, PI

**Heavy Duty Floor Stop - Cast**  
 MS & ES



TRIMCO#	1257R
OA	6" x 8-3/8"
H	5"
BHMA	L01241

Al

**Riser for the 1257 Series Stop**  
**Cast**  
 Sprayed to match

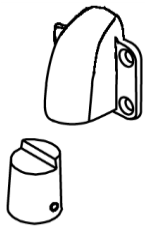


TRIMCO#	1258M
B	3-1/4" x 1-3/4"
H	2-3/4"
STR-D	1-1/4"

Br, Bz, PI

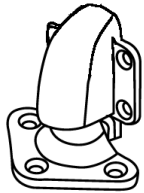
**Heavy Duty Floor Stop - Cast**  
 MS & ES

# SPECIAL STRIKES AND HOLDERS



**TRIMCO# 1260WP**  
 BODY 3-1/16" x 3-1/2"  
 Br, Bz, PI

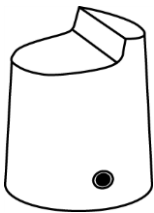
**Holder with Pipe Adapter Strike**  
**Cast**  
 Drilled for 3/4" IPS  
 (pipe not supplied)



TRIMCO#	1260W	1261	1263	1265	1267
OA	3-1/16" x 3-1/2"	3-1/16" x 3-1/2"	3-1/16" x 3-1/2"	3-1/16" x 3-1/2"	3-1/16" x 3-1/2"
C		1/2"	9/16" - 1-1/16"	1-1/8" x 1-9/16"	1-5/8" x 2-1/16"
P-Holder	2"	2"	2"	2"	2"
P-Strike	2-1/2"	1-1/4"	1-3/4"	2-1/4"	2-3/4"
BHMA	L01301	L01301	L01301	L01301	L01301
	Wall Strike	Floor Strike	Floor Strike	Floor Strike	Floor Strike

Br, Bz, PI

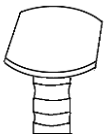
**Door Holder and Strike - Cast**



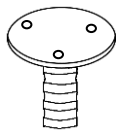
**TRIMCO# 1260P**  
 OA 1-1/2" x 1-3/4"  
 BHMA L01331  
 Bz, PI

**Pipe Adapter Strike - Cast**  
 For installation where door swings  
 over a step 3/4" IPS.  
 (pipe not supplied)

1268



TRIMCO#	1268	1268CK
D	4"	2-3/4"
H	3-5/8"	3-5/8"



1268CK

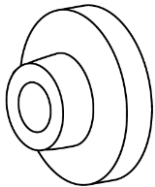
**Plate Adapter - Cast**  
 Sprayed to match stop.

Installed in wet cement

Drilled and tapped for the 1214CK  
 Requires 3" diameter cored hole in  
 concrete. Not installed in wet cement.

AI

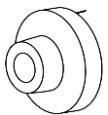
# WALL BUMPERS



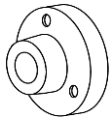
TRIMCO#	1270CV	1270WV	1270CX	1270WX
ID	1-3/8"	1-3/8"	1-3/8"	1-3/8"
OD	2-3/16"	2-3/16"	2-3/16"	2-3/16"
P	1"	1"	1"	1"
M	Cast	Wrought	Cast	Wrought
BHMA	L02251	L02251	L02101	L02101
	Br, Bz, Pl	Br, Bz, Pl, SS	Br, Bz, Pl	Br, Bz, Pl, SS

### Wall Bumper - Combo Pack

Anti-Vandal Rubber  
 Convex (X) available.  
 Concave (V) shown  
 Comes with our combo pack



1270CVPV

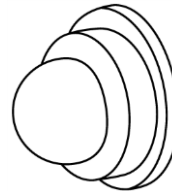


1270CVSV

### TRIMCO# 1270CVPV / 1270CVSV

#### Wall Bumper

Vandal Proof. Rubber cannot be removed; Anti-Rotation Pin.  
 PV=Prison Version or  
 SV=School Version  
 Also available: Cast, 1270CXPV or 1270CXSV  
 Patent applied for.



### TRIMCO# 1275RP

ID	9/16"
OD	1"
P	9/16"
BHMA	L02101

Br, Bz, Pl

#### Small Wall Bumper

WS x RP

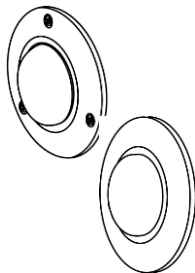
### TRIMCO# 1278CV or 1278CX

OD	1-1/2"
P	1"
BHMA	L02101

Br, Bz, Pl, Al

#### Wall Bumper

WS x RP. Minimal Trim.  
 Anti-Vandal Rubber.  
 Concave (V)  
 Convex (X) Please specify fasteners as below\*



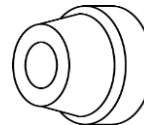
### TRIMCO# 1277/79

D	4"
P	3/4"
BHMA	L02111/L02101

Br, Bz, Pl

#### Large Wall Bumper - Cast

Available with concealed or exposed fasteners. Convex (X) only.  
 Please specify fasteners as below\*



1278CV



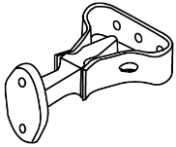
1278CX

### \*New Wall Bumper Abbreviations:

C = Cast  
 W = Wrought  
 X = Convex  
 V = Concave  
 TB = Toggle Bolt

MS = Machine Screw  
 CP = Combo Pack  
 WS = Wood Screw  
 RP = Rawl Plug  
 PV = Prison Version  
 SV = School Version

# HOLDERS / STOPS

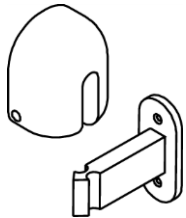


TRIMCO#	L1280	L1280CI
OA	3/4" x 2-1/4" x 2"	3/4" x 2-1/4" x 2"
STR	5/8" x 2-13/16"	5/8" x 2-13/16"
P	3-1/2"	3-1/2"

Br, Bz, PI

CI = Cast Iron  
 Sprayed to Match

**Door Holder - Cast**  
 Specify fastenings

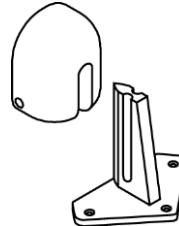


TRIMCO#	1283-4S
OA	2-1/4" x 2-3/4" x 1-1/2"
STR	3" Wall
BHMA	L01301

Br, Bz, PI

**"Adjustre" Holder Body and Wall Strike - Cast**

The self-adjusting "Adjustre" compensates for door sag both horizontally and vertically.  
 Patent #3129024

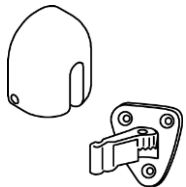


TRIMCO#	1283-2S
OA	2-1/4" x 2-3/4" x 1-1/2"
STR	3" Floor
BHMA	L01301

Br, Bz, PI

**"Adjustre" Holder Body and Floor Strike - Cast**

The self-adjusting "Adjustre" compensates for door sag both horizontally and vertically.  
 Patent #3129024



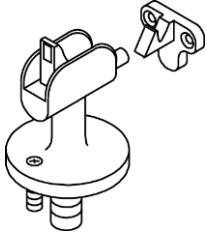
TRIMCO#	1283-6S
OA	2-1/4" x 2-3/4" x 1-1/2"
STR	3-1/8" x 2-7/8"

Br, Bz, PI

**"Adjustre" Holder Body and Pivoting Wall Strike - Cast**

Use pivoting strike to take care of any difficult opening angle hold open position. Wall mount only.

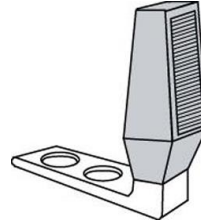
## HOLDERS / STOPS



<b>TRIMCO#</b>	<b>1290</b>
B	4-1/2"
STR	15/8" x 2-1/8"
H	4-7/8"
BHMA	L01251

Br, Bz, Pl

**Floor Stop & Holder - Cast**  
Heavy Duty

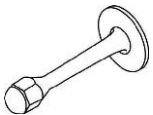


<b>TRIMCO#</b>	<b>1291</b>
H	2-1/2"
B	2-7/16" X 1"

**Angle Floor Stop**

Heavy Duty  
 Supplied with Wood Screws  
 and Machine Screws & Anchors  
 Finish 603 only

1296

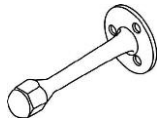


<b>TRIMCO#</b>	<b>1296</b>
B	2"
P	4-11/64"
BHMA	L02031

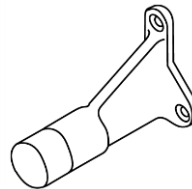
Br, Bz, Pl

**Base Stop - Cast**

Single Hanger Bolt.  
**Note:** order 1296S to specify  
 3-hole surface mount



1296S



<b>TRIMCO#</b>	<b>1298</b>
B	2-1/4" x 2-5/8"
P	4-3/16"

Br, Bz, Pl

**Door Stop - Cast**

Extra rugged,  
 three point fastening

Trimco has been serving the trim hardware market since 1949.

For the last 65 years, Trimco has evolved into a tuff competition for big companies, our secret... great commitment to quality products, exceptional customer service, and the fact that we stand behind the products we make.

When you buy from Trimco, you know it will last!

Thank you for being a loyal customer.

As always, if there is room for improvement, we want to know!



# RESTROOM SIGNS, LOCK INDICATOR



**TRIMCO# 507**  
 OA 8" x 8"  
 SYM Men/Braille

**Restroom Sign  
 ADA**



**TRIMCO# 508**  
 OA 8"X8"  
 SYM Women/Braille

**Restroom Sign  
 ADA**



**TRIMCO# 509**  
 OA 8" x 8"  
 SYM Unisex/Braille

**Restroom Sign  
 ADA**



**TRIMCO# 527**  
 OA 8" x 8"  
 SYM Men/Handicap/  
 Braille

**Restroom Sign  
 ADA**



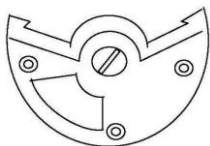
**TRIMCO# 528**  
 OA 8" x 8"  
 SYM Women/  
 Handicap/  
 Braille

**Restroom Sign  
 ADA**



**TRIMCO# 529**  
 OA 8" x 8"  
 SYM Unisex/  
 Handicap/  
 Braille

**Restroom Sign  
 ADA**



**TRIMCO# 5004**

**Mortise Lock Indicator**  
 Red signifies Locked  
 Green signifies Unlocked  
 Emergency Access  
 Available. Can be  
 customized for most  
 locksets.

# HANDICAP RESTROOM SIGNS



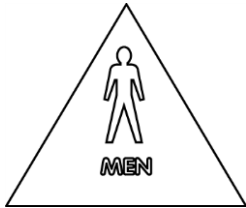
**TRIMCO# 751**  
 OA 8" x 8" Square  
 SYM Handicap

**Handicap Sign**  
 1/8" Engraved Sign



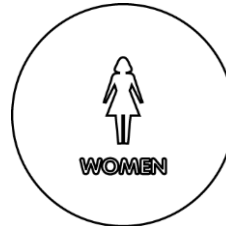
**TRIMCO# 752**  
 OA 12" Circle  
 SYM Unisex

**Restroom Sign**  
 1/4" Material  
 Title 24 Signage



**TRIMCO# 753**  
 OA 12" Triangle  
 SYM Men

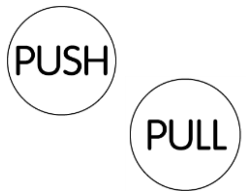
**Restroom Sign**  
 1/4" Material  
 Title 24 Signage



**TRIMCO# 754**  
 OA 12" Circle  
 SYM Women

**Restroom Sign**  
 1/4" Material  
 Title 24 Signage

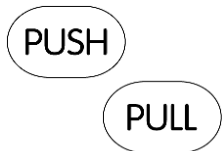
NOTE: All signs are raised white letters and figures, with Braille upon request (with an additional charge). On blue plastic grade 2 and supplied with 2-sided mounting tape. Other symbols and combinations available. Please inquire.



TRIMCO#	755	756
D	2-5/8"	2-5/8"
E	Push	Pull

Br, Bz, SS

**Indicator Plate**  
 1/8" material. Adhesive mount.



TRIMCO#	757	758
OA	1-1/2" x 3-3/8"	1-1/2" x 3-3/8"
E	Push	Pull

Br, Bz, SS

**Indicator Plate**  
 1/8" material. Adhesive mount.  
 Add "V" for vertical orientation.

# SIGNAGE- ENGRAVED , DECALS, & MAIL PLATES



TRIMCO#	760	793
M	1/8" Plastic	1/8" Metal
	Black, Red, Blue, Brown	
		Br, Bz, Al, SS

**Engraved Sign**  
 Sketch required.  
 Specify adhesive mount or wood screw mount when ordering.

THIS DOOR TO REMAIN UNLOCKED DURING BUSINESS HOURS

THESE DOORS TO REMAIN UNLOCKED DURING BUSINESS HOURS

TRIMCO#	771	773
OA	1-1/2" x 27"	1-1/2" x 27"

**Decal Signage**  
 "This door to remain unlocked during business hours"      "These doors to remain unlocked during business hours"

Decals only available in black letters on a silver background.

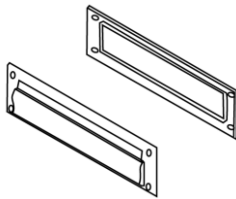
THIS DOOR TO REMAIN UNLOCKED WHILE BUILDING IS OCCUPIED

THESE DOORS TO REMAIN UNLOCKED WHILE BUILDING IS OCCUPIED

TRIMCO#	774IBC	775IBC
OA	1-1/2" x 27"	1-1/2" x 27"

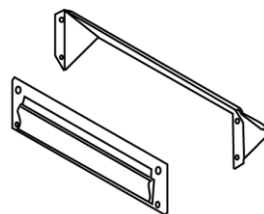
**Decal Signage**  
 "This door to remain unlocked while building is occupied"      "These doors to remain unlocked while building is occupied"

Decals only available in white letters on clear background.



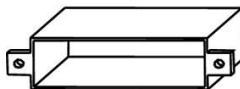
TRIMCO#	2082
OA	3-1/2" x 13"
BHMA	L06032
	Br, Bz, PI

**Mail Plate Set**  
 Magazine size, spring type front plate with frame inside.



TRIMCO#	2085
OA	3-1/2" x 13"
BHMA	L06032
	Br, Bz, PI

**Mail Plate Set**  
 Magazine size, spring type front plate with hood inside

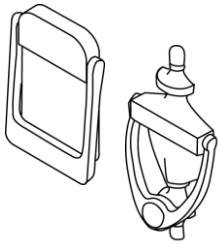


TRIMCO#	2091
OA	2-3/4" x 12-3/4" x 1-3/4"
	Al

**Mail Plate Sleeve**  
 For 1-3/4" Door

D = diameter, E = engraving, M = material, OA = overall size

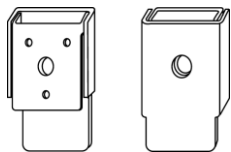
# DOOR KNOCKERS, VIEWERS, & COAT HOOKS



TRIMCO#	620	621
OA	3" x 2-1/8"	6-1/8" x 3-1/8"
BHMA	L03161	L03151

Br, PI

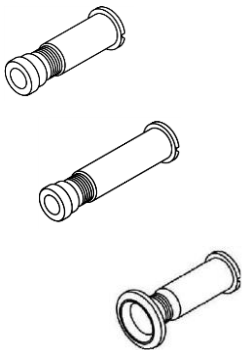
**Door Knocker**  
 Engraving and Viewer Available



TRIMCO#	625CV	625CVE	625V	625VE
OA	3-7/8" x 2"	3-7/8" x 2"	3-1/4" x 2"	3-1/4" x 2"
Knocker	Card Holder	Card Holder	Viewer	Viewer
Includes:	w/Viewer	w/Eng/Viewer		w/Eng
BHMA	L03151	L03151	L03151	L03151

Br, PI

**Door Knocker - Viewer (975)**  
 Modern style solid metal stamping



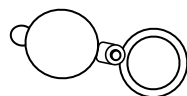
TRIMCO#	975	975-1	975U	976	976U
OA	160°	160°	160°	180°	180°
BHMA	L03172	L03172	L03222	L03171	L03221

Extra Log

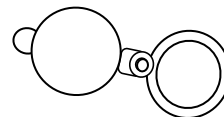


Br, PI

**Door Viewer**  
**Note: Also available, Viewer WITH Caps order 975U-CAP or 976U-CAP**



975CV (viewer cap ONLY)



976CV (viewer cap ONLY)



TRIMCO#	3070-1
B	1-5/8" x 1-3/8"
P	3"
H	2-1/2"
BHMA	L03111

Br, Bz, PI

**Coat & Hat Hook - Cast**  
 Burnished

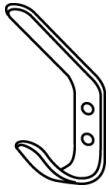


TRIMCO#	3071
OA	7/8" x 5-1/2" x 1-7/8"
P	1-3/4"
M	3/16"
BHMA	L03111

Br, Bz, PI, SS

**Coat & Hat Hook**  
 Attractive and Rugged

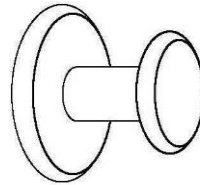
# COAT HOOKS...cont. & HANDRAIL BRACKETS LOCK ADAPTER & ASTRAGALS



<b>TRIMCO#</b>	<b>3071-1</b>
OA	7/8" x 4-1/2" x 1-7/8"
P	1-3/4"
M	3/16"
BHMA	L03111

Br, Bz, Pl, SS

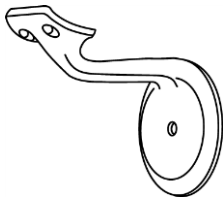
**Coat & Hat Hook**  
Attractive and Rugged



<b>TRIMCO#</b>	<b>3072</b>
B	2" DIA
P	1-3/4"
SHAFT	5/8" DIA

SS

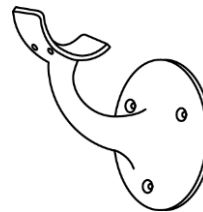
**Coat Hook**  
Attractive and Rugged



<b>TRIMCO#</b>	<b>3405</b>
OA	3" Base
P	3-1/2"
WC	2-1/2"
F	Full Finish
BHMA	L03091

Br, Bz, Al

**Handrail Bracket - Cast**  
Fits 1-3/4" diameter rail



<b>TRIMCO#</b>	<b>3406</b>
B	3-3/4"
WC	3"
P	3-7/8"
BHMA	L03081

Br, Bz, Al

**Handrail Bracket - Cast**  
Fits 1-3/4" diameter wood rail

**NOTE:** All of the above HANDRAILS meet **ADA** with narrow handrail.  
May require additional spacer with wide handrail.



<b>TRIMCO#</b>	<b>5000-T</b>
OA	9-1/2" x 1-7/8"
CTC	8-1/2"

Bz, Pl

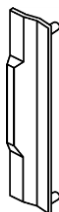
**Lock Astragal - Cast**  
Mortise or cylindrical lock. Custom spacer available for longer lipped strikes.



<b>TRIMCO#</b>	<b>5001</b>
OA	9-1/2"
CTC	6-1/2" & 8-1/2"

Bz, Pl

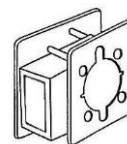
**Lock Astragal - Cast**  
Mortise or cylindrical lock. Custom spacer available for longer lipped strikes.



<b>TRIMCO#</b>	<b>5002</b>
OA	6" x 1-9/16"
CTC	4"
M	13 GA
	Stainless
	Steel

SS

**Lock Astragal**  
Cylindrical lock only.



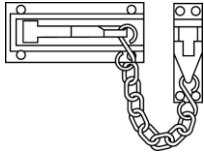
<b>TRIMCO#</b>	<b>5022</b>
<b>Unit Lock Adapter</b>	
Retro-fit installation so that a cylindrical lock can replace a unit-lock.	

SS

Note: Powder Coat finishes by quote

B = base, F = finish, OA = overall size, P = projection, WC = wall to centerline

# GUARDS

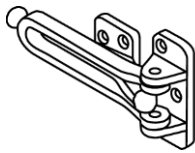


<b>TRIMCO#</b>	<b>4015</b>
OA (plate)	3-3/8" x 1-7/16"
(chain)	7-1/2"
(holder)	3/4" x 2"
BHMA	L03041

Br, PI

### Door Guard, Chain

All Brass except chain.



TRIMCO#	4016	4016ED	4016-S
OA	2-1/2" x 5-1/8"	1" x 1/2"	1-7/8" x 1-1/8" x specify ht.
BHMA	L03041		

Br, Bz, PI

### Door Guard – Swing Arm

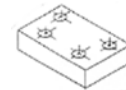
Hinged bar allows guard to be positioned 180° away from door when not in use.

Optional spacers required if any applied casing involved.

Br, Bz, PI  
 Adhesive Mount  
 Edge Protector  
 for 4016



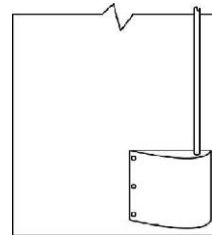
Black Nylon  
 Spacer for 4016



<b>TRIMCO#</b>	<b>4048</b>
OA	33-3/4"
BHMA	L02222

### Chain Crash Stop

Extra heavy-duty solid welded steel twist chain designed for heavy commercial doors. Heavy cast brass plates with heavy compression springs at each end. This product is adjustable from 20" to 30-1/2".

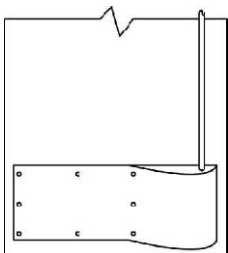


### TRIMCO# PG8000

OA	10" x 11-1/2"
P	3-3/16"

Br, Bz, SS

**Latch Guard**  
 .050

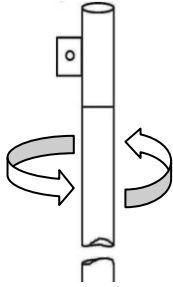


TRIMCO#	PG8002	PG8002-1 (2 pieces)
OA	10" x Specify	10" x Specify
P	3-3/16"	3-3/16"
L	Specify	Specify

Br, Bz, SS

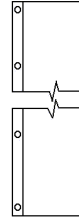
**PG8000 Series** Latch Guards prevent damage to lower latch of exposed-rod panic devices and shield the foot area for the wheelchair user from the lower latch protrusion. Patent #DES,350-473, #5381,627

# GUARDS, TRIM

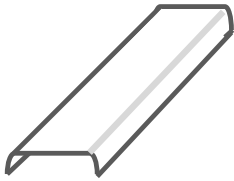
  
 (top view)


**TRIMCO# FG8000-XX**  
 OA 24", 36", 42"  
 D 1"  
 (XX=SIZE) \_\_\_\_\_  
 SS

**Frame Guard**  
 Protects the edges of frames  
 From wheeled equipment.  
 Built in roller spins when hit.

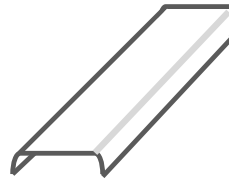


**TRIMCO# K39**  
**Fingerguard** – Nursery and  
 Pre-school item protects little  
 fingers from getting pinched  
 between door and jamb. Up  
 To 48", specify height when  
 ordering. Over 48" call for  
 quote. Maximum length is 60"



**TRIMCO# PBT8000-1-X.710CU**  
 L 16-5/16" (30" to 36" doors)  
 L 22-5/16" (37" to 48" doors)  
 W 2-1/4"  
 (X = SIZE) \_\_\_\_\_  
 CU+

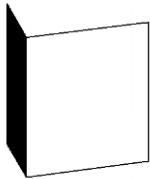
**Push Bar Trim for Exit Device**  
 Bactericidal Trim cover for  
 existing Von Duprin 98/99



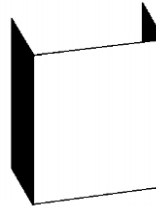
**TRIMCO# PBT8000-2-X.710CU**  
 L 19-3/16" (30" to 36" doors)  
 L 19-3/16" (37" to 48" doors)  
 W 2-1/4"  
 (X = SIZE) \_\_\_\_\_  
 CU+

**Push Bar Trim for Exit Device**  
 Bactericidal Trim cover for  
 existing Stanley Apex 2000

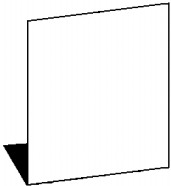
## SPECIAL PLATES



**TRIMCO# WA-A**  
**One Side Return**  
 .050



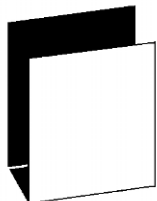
**TRIMCO# WA-B**  
**Two Side Return**  
 .050



**TRIMCO# WA-C**  
**Bottom Return**  
 .050



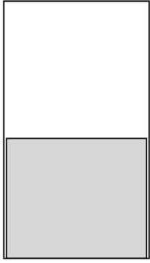
**TRIMCO# WA-D**  
**Side Wrap Around**  
 .050



**TRIMCO# WA-E**  
**Bottom Wrap Around**  
 .050

NOTE: Furnish specifications on type, height,  
 and width of plate, door thickness, finish,  
 beveled or square edged doors, cut-outs &  
 handing, etc...

# PLATES

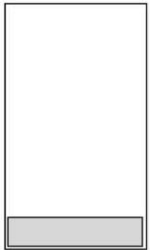


TRIMCO#	KA038	KA038-1	KA050-1	KA050-2	KA050-3
OA	18-36" H	37-48" H	17-24" H	25-42"	43-48" H
M	.038	.038	.050	.050	.050
BHMA			J101	J101	J101

Br, Bz, Al, SS

**Armor Plate**

605 finish = 24" height maximum  
 606/609 finishes = 36" height maximum  
 611/612/613 finishes = 36" height maximum  
 Aluminum and SS = 48" height maximum

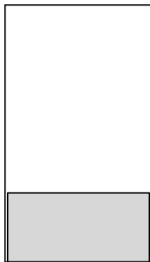


TRIMCO#	KM038	K038-1	KM050	KM050-1
OA	Under 6" high	4" or under	Under 6" high	4" or under
M	.038	.038	.050	.050
BHMA			J103	

SS only

Br, Bz, Al, SS

**Mop Plate**

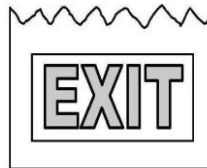


TRIMCO#	K0038	K0050
OA	7"-16" H	7"-16" H
M	.038	.050
BHMA		J102

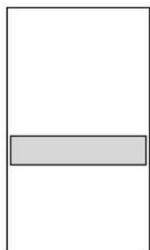
SS only

Br, Bz, Al, SS

**Kick Plate**

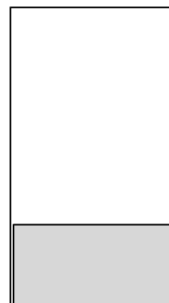


**TRIMCO# 10X34.ILLUM.630**  
**.050 Kick Plate**  
 with Self-illuminated "EXIT"  
 Sign.   
 Meets UL924 standards



TRIMCO#	KS050
OA	6" H
M	.050

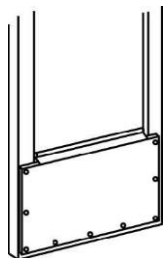
**Stretcher Plate**



TRIMCO#	K6000
OA	4-48" high
COL	Black, Grey
M	Plastic 1/8"
BHMA	J106

Plastic

**Kick Plate**  
 Other colors and clear are available.



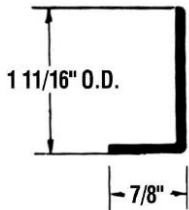
**TRIMCO# KH050**

To cover glass on narrow stile aluminum doors.

**NOTE:** All Kick plates are made from solid 260 Brass, 220 Bronze, in Stainless Steel or 5005H34 Aluminum. All edges are relieved. Heavy bevel at extra charge. All .038 Protection plates are Stainless Steel ONLY. Specify countersinking if required. Available with screw or adhesive mount. – Specify when ordering.



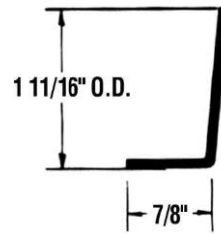
## EDGE GUARDS



<b>TRIMCO#</b>	<b>KE31-1</b>
OA	90° x up to 42"
OD	1-11/16"
RET	7/8"
BHMA	J204

Br, Bz, SS

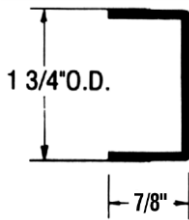
**Edge Guard** – for non-beveled stile on single acting door. Mortise prep shown, non-mortise available.



<b>TRIMCO#</b>	<b>KE32-1</b>
OA	93° x up to 42" *
OD	1-11/16"
RET	7/8"
BHMA	J205

Br, Bz, SS

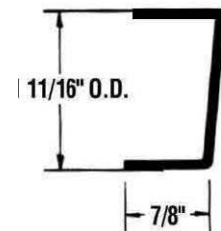
**Edge Guard** – for stile beveled 1/8" on single acting door. Mortise prep shown, non-mortise available.



<b>TRIMCO#</b>	<b>KE33-1</b>
OA	90° x up to 42"
OD	1-3/4"
RET	7/8"
BHMA	J210

Br, Bz, SS

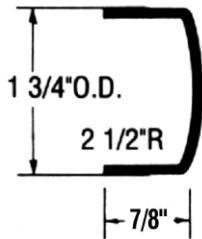
**Edge Guard** – for non-beveled stile for double acting door. Mortise prep shown, non-mortise available.



<b>TRIMCO#</b>	<b>KE33-2</b>
OA	93° x up to 42"
OD	1-3/4"
RET	7/8"
BHMA	J210

Br, Bz, SS

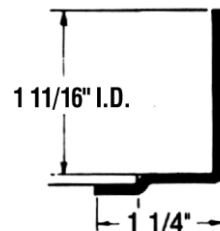
**Edge Guard – Beveled Door**  
Specify Mortise or Non-Mortise



<b>TRIMCO#</b>	<b>KE34-1</b>
OA	DA x up to 42"
OD	1-3/4"
RET	7/8"
BHMA	J212

Br, Bz, SS

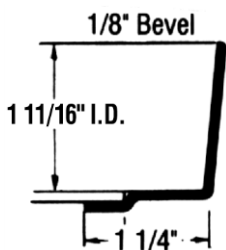
**Edge Guard** – Double Acting. For Radius stile on double acting mortise prep shown, non-mortise available.



<b>TRIMCO#</b>	<b>KE35-1</b>
OA	90° x up to 42"
ID	1-11/16"
RET	1-1/4"
BHMA	J201

Br, Bz, SS

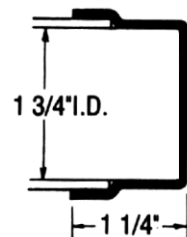
**Edge Guard** – for non-beveled stile on single acting door. Non-mortise prep shown. Mortise available.



<b>TRIMCO#</b>	<b>KE36-1</b>
OA	93° x up to 42"
ID	1-11/16"
RET	1-1/4"
BHMA	J202

Br, Bz, SS

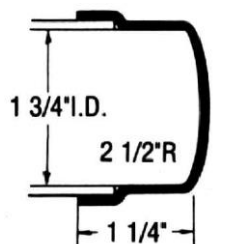
**Edge Guard** – for stile beveled 1/8" to 2" on single acting door. Non-mortise prep shown. Mortise available.



<b>TRIMCO#</b>	<b>KE37-1</b>
OA	90° x up to 42"
ID	1-3/4"
RET	1-1/4"
BHMA	J207

Br, Bz, SS

**Edge Guard** – for non-beveled stile on double acting door. Non-mortise prep shown. Mortise available.



<b>TRIMCO#</b>	<b>KE38-1</b>
OA	DA x up to 42"
ID	1-3/4"
RET	1-1/4"
BHMA	J209

Br, Bz, SS

**Edge Guard** – for radius stile on double acting door. Non-mortise prep shown. Mortise available.

**NOTE:** For angle edge guards, we suggest 1/16" less than door thickness. For edge guards, specify: Hanging, Mortise, Non-Mortise, Bevel, Non-Bevel, No Cutouts. Need Drawing on all Cutouts and Special Screw locations. Holes are drilled approximately 3/8" from edge and spaced six inches apart. Do not pre-drill doors. Include drawings for all special screw patterns, cutouts.

\* Over 42" by quote.

Tolerance on all dimensions +/- 1/16".