



# Logitech® Mouse, Trackball, and Keyboard

## User's Guide for MouseWare® and iTouch™



In Touch with Your World.™

## Welcome!

Congratulations on your purchase of your Logitech® product. Your mouse, trackball, or keyboard is part of the Logitech family of interactive desktop products, which make your time at the computer, or on the Internet, more productive, comfortable, and enjoyable.

Logitech has been designing, manufacturing, and marketing computer peripherals for over 18 years. These products form the bridge between people and computers, a link so intuitive that the digital world feels like a natural extension of your senses.

To help you get the most from your Logitech product, this manual was written to be used either online or as a printed document. It is a down-loadable file, which is copied to your hard drive automatically during software installation. You can quickly view the contents of this manual by clicking one of the topics you see listed on the left. Or you can print this manual by clicking "File" then "Print" in the menu bar above.

To use this manual effectively, you must first install your Logitech product by connecting the hardware and installing the software. To install your Logitech product, please refer to the printed Getting Started Guide that comes with your product. This document tells you everything you need to know in order to get started right away. After you have finished installation, refer to this document to learn more about the following topics:

- **Comfort Guidelines**
- **MouseWare®**, Logitech's Premier Pointing Device Software for Windows and Macintosh®
- **Button Assignments for Your Mouse or Trackball**
- **Scrolling and Zooming (Zooming in Windows® Only) in Documents with Your Mouse or Trackball**

- **WebWheel™, Logitech's Easy-to-Use and Intuitive Web Interface**
- **Information about your optical mouse**
- **Cordless TrackMan® FX Wrist-pad**
- **iTouch™ Software, Logitech's Innovative Keyboard and Internet Software**
- **Product Maintenance**
- **Troubleshooting**
- **Logitech® Addresses and Telephone Numbers**
- **Product Warranties**

## **Comfort Guidelines**

### **Important Ergonomic Information**

## **Feels Good, Feels Better...**

Whether you spend five minutes or five hours using your keyboard, mouse, or trackball, these suggestions can help you stay comfortable and productive.

Some research suggests that

- **long periods of repetitive motion,**
- **using an improperly set up work space,**
- **incorrect body position, and**
- **poor work habits**

may be associated with physical discomfort and injury to nerves, tendons, and muscles. If you feel pain, numbness, tingling, weakness, swelling, burning, cramping, or stiffness in your hands, wrists, arms, shoulder, neck, or back, see a qualified health professional.

Follow the guidelines in this booklet to maximize your comfort and lessen the chance of injury.

## **Make sure that your workspace is set up properly...**

Your keyboard and monitor should be directly in front of you with your mouse or trackball next to it. Place your mouse or trackball within easy reach so that your elbow can remain next to your side when using them.

**DO**

- **DO** adjust the height of your chair and desk as to have the keyboard, mouse, or trackball at or below elbow height.
- **DO** use the adjustment mechanism on the keyboard, if necessary to obtain the proper keyboard height.
- **DO** remember, if you use a mouse pad, take its thickness into consideration when making the height adjustments.
- **DO** have your feet well supported and your shoulders relaxed.

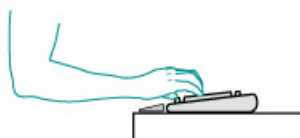
**DO** place materials on your desk according to their frequency of use:

- **Frequent** - Put materials you use the most closest to you.
- **Occasional** - Put materials that you use occasionally no farther than an arm's length away.
- **Infrequent** - Put your infrequently used materials further away, but consider convenience.

**DO** place documents you need while typing close to the monitor to reduce frequent head turning and change of eye focus. You can use a document holder to help.

## Keep your shoulders, arms, wrists, and hands relaxed and comfortable as you work...

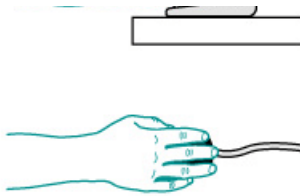
To keep your shoulders, arms, wrists, and hands relaxed as you work, let them hang loosely at your sides for a moment, allowing them to dangle toward the floor and to become relaxed. Try to maintain this relaxed feeling while you work.

**DO**

**If you have a wrist rest or a palm rest, use it between keying tasks, not while typing.** Using it while typing may increase pressure against the hand and increase the chance of injury.

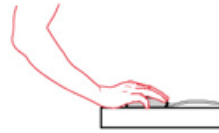


**When you use your keyboard, mouse, or trackball, avoid placing or supporting your wrists on sharp edges or on your desktop.**



As you use your keyboard, mouse, or trackball, make sure that your elbow is next to your side. Keep your wrist relaxed and straight—don't bend it up, down, or to either side. Keep your shoulders relaxed. Do not hunch or shrug.

**DON' T** rest your wrist on sharp edges.



**DON' T** bend your wrist.



## Practice good work habits...

- **Take frequent short breaks.** Get up and walk around at least a couple of times every hour.
- **Vary your tasks throughout the day.** Do something different with your hands and arms for a while.
- **Use a light touch** on the keyboard and for better control of the mouse or trackball.
- **Use software features** to customize your mouse or trackball to help you reduce stress to your arm, wrist, or hand by minimizing repetitive or awkward motions.

## Be alert to signs of discomfort...

If at any time during or after typing you feel pain, weakness, numbness, or tingling in your hands, wrists, elbows, shoulders, neck, or back, or if you have any reason to believe that you might be experiencing discomfort as a result of typing or from using the mouse, you should consult a qualified health professional.

## Getting information...

Please review this entire booklet for suggestions regarding work habits and workspace arrangement.

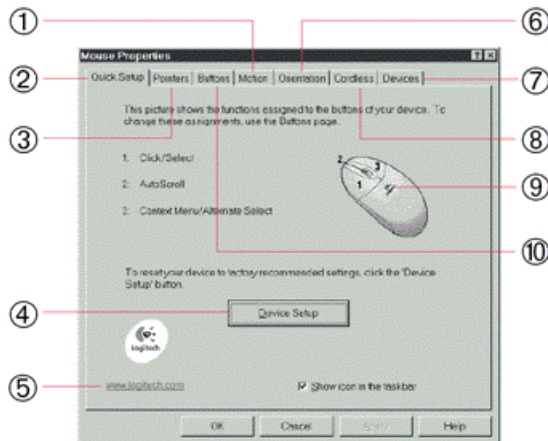
For information regarding strategies or customizations which might increase your comfort when using the other parts of your computer system (monitor, CPU, etc.), please consult the literature and software packaged with those components.

## MouseWare® for Windows®

This section of the Online User's Guide is for Windows users. If you are running Windows® 3.1x, Windows® 95, Windows® 98, Windows NT® 4.0, or Windows® 2000, refer to this section to learn how to use your mouse and trackball.

## Using MouseWare®

Your mouse or trackball comes with the MouseWare® software, which includes features for making button assignments, controlling cursor movement, and setting up the mouse or trackball in Windows® 95, Windows® 98, Windows® 2000, and Windows NT® 4.0. (For Windows® 3.1x support, refer to "Using the Mouse or Trackball in Windows® 3.1x.") **To access the MouseWare software, double-click the mouse icon on the Windows Taskbar, or start MouseWare from the Control Panel.** The Mouse Properties displays, as shown below. Choose from the available options to set up the mouse or trackball.



**1 - Modifies cursor movement**

**2 - Sets up a mouse**

**3 - Selects a pointer shape**

**4 - Click this button to run the Mouse Wizard which helps you set up a mouse**

**5 - Click here to launch the Logitech website**

**6 - Sets mouse orientation**

**7 - Adds another mouse**

**8 - Shows battery level**

**9 - Mouse picture varies depending on device connected to system**

**10 - Makes button assignments**

## Choosing Options

Need help choosing options? Let the Mouse Wizard show you how. To begin, go to the Mouse Properties. To do this, double-click the mouse icon in the Windows® Taskbar. Now choose the Quick Setup tab. Click Device Setup, then follow the on-screen instructions.

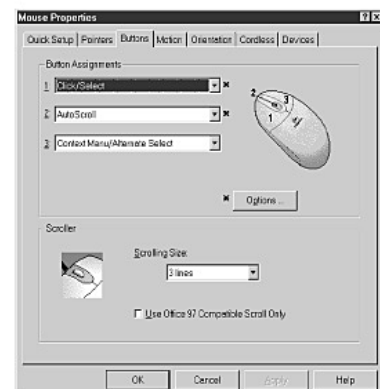


## Button Assignments

By default, the mouse or trackball buttons are assigned various useful functions, such as Click/Select, AutoScroll, Context Menu/Alternate Select, Double-Click, etc. Using the Buttons tab of the Mouse Properties, you can change the button settings of your mouse or trackball and configure the wheel, if your device has one. (Refer to the figure to the right.)

**Note** The setting Context Menu/Alternate Select provides easy-to-use short-cuts to speed up common tasks, such as cut and paste.

To change button assignments, click the down arrow to select a function for a button. (Note that at least one button must be



assigned to Click/Select.)

Click the down arrow under "Scrolling Size:" to choose the amount of scrolling. **This sets the amount of scrolling in relation to how much you move the wheel.**

Click the Options button to specify settings for AutoScroll, CyberJump®, HyperJump and double-click timing.

For more information, click the Help button.

## Battery Warning!

(Cordless Devices and Desktop Systems Only)

When battery power is low for the mouse, trackball, or keyboard, the MouseWare® software displays a dialog box in Windows® 95, Windows® 98, Windows® 2000, and Windows NT® 4.0 suggesting that you change the batteries. It is recommended that when you change batteries you change them for the mouse/trackball and keyboard (if you own a Logitech® cordless keyboard) at the same time to optimize performance. When replacing the batteries, use alkalines. You may use other battery types, but do not mix them with alkalines. Note that the battery level indicator in the iTouch™ software or in the Mouse Properties is calibrated for alkaline batteries only, and will not give an accurate indication of battery life for batteries other than alkalines.

**Note** For the cordless trackball, removing the ball for long periods of time may accelerate the rate at which battery power is used.

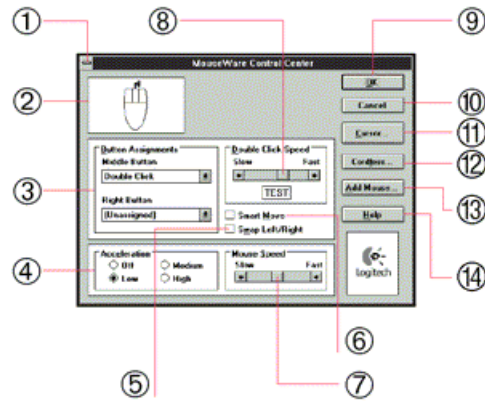
Discard all used batteries according to the battery manufacturer's instructions. Exercise care when handling batteries. When batteries are misused, they may explode or leak, causing burns and personal injury. Do not open a battery or mutilate, dispose of in a fire, expose to heat above 130° F (54° C), immerse in water, install improperly, or recharge. Conducting materials, such as rings, bracelets, and keys, can short out a battery causing it to overheat and possibly leak or explode. When you are not using your cordless device for long periods of time, remove the batteries and store them in a dry place at normal room temperature.

## Cordless Desktop™ Icons

Various Cordless Desktop icons appear on the Windows® Taskbar. These icons provide valuable information about the Cordless Desktop, and make it possible for you to display keyboard and mouse property sheets easily and quickly. Double-clicking either the keyboard or mouse icon launches its respective property sheet in which you can specify options. Standard keyboard functions are also conveniently displayed on the Taskbar, which give the status of Num Lock, Caps Lock, and Scroll Lock. When mouse or keyboard battery power is low, a warning icon appears to let you know that it is time to change the batteries. Whenever you change the batteries, it is a good idea to change the batteries in both the keyboard and mouse at the same time for best performance.

## MouseWare® for Windows® 3.1x

Double-click the MouseWare® icon located in the Logitech® MouseWare group window (or in the Windows Control Panel). Choose from the available options to configure the wheel mouse. **Note that Scroll and Zoom, as well as WebWheel™, CyberJump® and HyperJump functions, are not supported in Windows 3.1x.**



**1 - Performs Windows functions**

**2 - Identifies button being pressed**

**3 - Assigns shortcuts to second/third buttons**

**4 - Sets cursor travel in relation to mouse speed**

**5 - Interchanges button functions**

**6 - Moves cursor to default command button automatically**

**7 - Adjusts cursor speed in relation to mouse movement**

**8 - Sets double-click speed**

**9 - Saves settings**

**10 - Cancels changes**

**11 - Enhances the cursor**

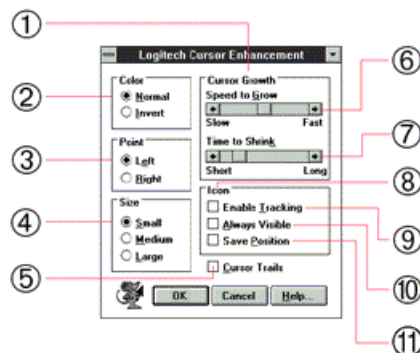
**12 - Provides Connection settings and battery status**

**13 - Redetects devices after plugging/unplugging a serial mouse**

**14 - Provides online help**

## Cursor Enhancement

Use the Cursor Enhancement dialog box to customize the cursor. To display the dialog box, click the Cursor button in the Mouse Control Center.



**1 - Makes the cursor grow larger as it moves across the screen\*\***

**2 - Displays the cursor in normal or reverse video**

**3 - Changes the pointing direction of the cursor**

**4 - Sets cursor size**

**5 - Leaves trail behind cursor as it moves\***

**6 - Sets the speed the cursor must move to change size\*\***

**7 - Sets the time the cursor stays large before shrinks in size\*\***

**8 - Controls tracker icon at the bottom of screen**

**9 - Causes tracker icon to point to cursor as it moves**

**10 - Places the tracker icon on top of all applications**

**11 - Retains position of tracker icon upon exit**

\* Disabled with some SVGA resolutions.

\*\* Disabled if Size is set to Large.

## Button Assignments

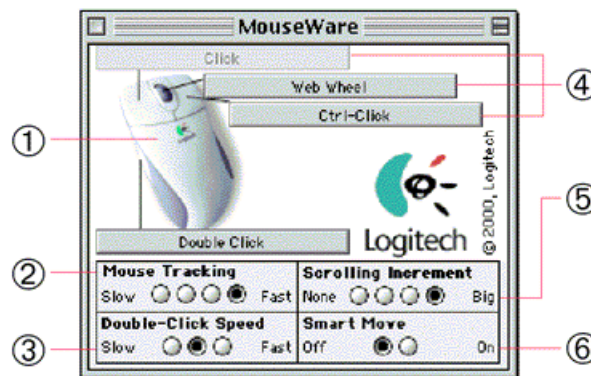
MouseWare allows you to assign functions to three mouse/trackball buttons and replaces frequently used tasks, such as Double-Click, DragLock, etc., to a single button click. To override a button assignment temporarily so you can use an application-specific feature, press the Control key while clicking the button to be overridden.

## MouseWare® for Macintosh®

This section of the Online User's Guide is for Macintosh® users. Refer to this section to learn how to use your mouse or trackball with your Macintosh computer.

### Customizing the Mouse or Trackball

**The Logitech® MouseWare® software includes features for making button assignments, controlling the amount of scrolling, and setting up the mouse or trackball. To access MouseWare, select MouseWare in the Control Panels. Choose from the available options to set up your mouse or trackball.**



**1** - The picture displayed here will show the mouse or trackball connected to your computer.

**2** - Adjust cursor speed in relation to mouse movement.

**3** - Choose double-click speed.

**4** - Click one of these boxes to make button assignments. (One button must be assigned to "Click.")

**5** - Choose how much is scrolled in the active window when you move the mouse wheel.

**6** - Choose to have the cursor move automatic to a default command button when an applicat window is opened.

### Battery Warning!

#### (Cordless Devices)

When battery power is low for the mouse or trackball, the MouseWare® software displays a dialog box on your desktop suggesting that you change the batteries. When replacing the batteries, use alkalines. You may use other battery types, but do not mix them with alkalines. Discard all used batteries according to the battery manufacturer's instructions. Exercise care when handling batteries. When batteries are misused, they may explode or leak, causing burns and personal injury. Do not open a battery or mutilate, dispose of in a fire, expose to heat above 130° F (54° C), immerse in water, install improperly, or recharge. Conducting materials, such as rings, bracelets, and keys, can short out a battery causing it to overheat and possibly leak or explode. When you are not using your cordless device for long periods of time, remove the batteries and store them in a dry place at normal room temperature.



# Scrolling: Windows® and Macintosh®

(Not Available in Windows® 3.1x)

If your mouse or trackball has a wheel, it functions both as a wheel and as a button. As a wheel, you can use it to scroll both vertically and horizontally, and you can also use it to zoom. To scroll, simply move the wheel. To use the wheel like a standard mouse button, click (press down) the wheel. Read the following tables to find out more about scrolling and zooming with your mouse or trackball.

## Scrolling with a Wheel

Task	What is It?	How to Do It?
Wheel Scroll	Use Wheel Scroll for precise up and down movement.	To scroll up, move the wheel forward; to scroll down, move the wheel back.
Horizontal Scroll	Use Horizontal Scroll in Windows® 95, Windows® 98, Windows® 2000, and Windows NT® 4.0 to scroll left to right, or right to left, whenever horizontal scroll bars are present in the active window.	When both vertical and horizontal scroll bars are present in a window, press the Ctrl and Shift keys (Option key for the Macintosh®) on the keyboard, then move the wheel forward to scroll left; move the wheel backward to scroll right. If <i>no</i> vertical scroll bars are present, simply move the wheel to scroll horizontally.
Zoom (Windows®)	Use Zoom to either magnify or demagnify the view of a document in an application that supports it.	Place the cursor in an application that is compliant with Microsoft Office 97 (or a higher version of this application). Press and hold the Ctrl key on the keyboard, then to zoom in, move the wheel forward; to zoom out, move the wheel backwards.

## Scrolling without a Wheel (Windows®)

Task	What is It?	How to Do It?
Universal Scroll (Windows®)	Universal Scroll™ lets you scroll in a document without having to use the window's scroll bars. Use the mouse or trackball to scroll up and down or left and right.	Assign Universal Scroll to a button on the mouse or trackball if it is not already assigned. Press the button you have assigned to Universal Scroll. To scroll up, move the mouse or trackball up; to scroll down, move the mouse or trackball down. To scroll left or right, move the mouse or trackball left or right respectively.
AutoScroll (Windows®)	Use AutoScroll to scroll through large documents in Microsoft® Windows 95, Windows 98, and Windows® 2000, and in applications that are compatible with Microsoft® Office 97 (or a higher version of this application). AutoScroll allows you to scroll a document automatically without having to move the mouse or trackball continuously.	Assign AutoScroll to a button on the mouse or trackball if it is not already assigned. Place the cursor in an application. Press the button assigned to AutoScroll. The AutoScroll icon appears. Move the mouse or trackball once in the direction you want to scroll (vertical, horizontal, or diagonal). The farther you move the pointer from the starting point, the faster the scrolling. To stop AutoScroll, press any mouse or trackball button.
Zoom (Windows®)	Use Zoom to either magnify or demagnify the view of a document.	Place the cursor in an application that is compatible with Microsoft Office 97 (or a higher version of this application). Press the Ctrl key on the keyboard, click the button assigned to Universal Scroll or AutoScroll, then to Zoom in, move the mouse or trackball up; to Zoom out, move the mouse or trackball down.

## WebWheel™ for Windows® and

# Macintosh®

(Not Available in Windows® 3.1x)


The Logitech® WebWheel™ helps you work faster and with greater ease when using your Internet web browser. The WebWheel has three of the most commonly used web browsing commands along with five web addresses, which you can personalize.



1. Launch your Internet browser.

**Note** The WebWheel browser command icons (Back, Stop, Reload, Bookmarks/Favorites) will appear with a small red "X" when you are not in your web browser.

2. Click and depress the assigned WebWheel button on your mouse or trackball.
3. Roll the wheel-button, or move your mouse, to highlight a selection on the WebWheel.

 **Back.** Returns you to the previous web page. Since the Back function is always the start point when launching the WebWheel, double-clicking the assigned WebWheel button executes the Back function.

 **Stop.** Halts the loading of a web page.

 **Reload.** Reloads or refreshes the current web page.

 **Open Bookmarks/Favorites.** Opens your bookmarks or favorites page.

 **View WebWheel Help.** Opens the WebWheel help file.

 **Go to a Web Address.** Opens the designated URL (Internet address) or one of the other web address selections on the WebWheel.

4. Click the highlighted WebWheel button, or press your click-select button on your mouse or trackball.

## Assigning a New Web Address

The WebWheel™ comes set up with five web addresses. These web pages give you an overview of possible addresses that you may wish to assign to the WebWheel. You may change these assignments to Internet addresses of your own choosing.

**Note** Some web addresses may be "locked"; that is, customization will not be possible. If you attempt to reassign a locked web address, you will receive a message telling you that reassignment is not permitted.

1. Open your web browser, then navigate to the desired web address.
2. Launch the WebWheel by pressing the assigned WebWheel button on your mouse or trackball.
3. Choose the section of the WebWheel where the web address is to be placed by rolling the mouse/trackball wheel or moving the mouse. Note that WebWheel browser command buttons cannot be changed.
4. To assign the web address, press and hold the CTRL key while clicking the

**WebWheel button you wish to change.**

- 5. In the dialog box that displays, enter a name for the web address, then click the assigned WebWheel button (or click OK for Macintosh).**

**Note** When assigning web addresses within the AOL® 4.0 browser, the CTRL-click method may not work. In this case, type the web address (e.g., <http://www.logitech.com>) and name in the edit boxes provided.

## Information about Your Optical Mouse

### International Standards and Safety

Your optical mouse has no serviceable parts included. User-observable light is 15 microwatts in normal operation. This mouse is rated as a commercial product for operation at 32° F (0° C) to 104° F (40° C).

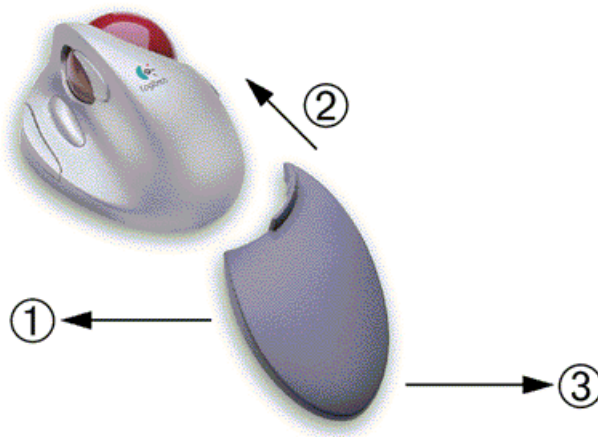
Your product has been tested to comply with International Standard IEC 825-1: 1993. The standard requires the following statement:

**CAUTION:** Use of controls or adjustments or performance of procedures other than those specified herein may result in hazardous radiation exposure.



## Cordless TrackMan® FX Wrist Pad

**Adjust the convenient wrist pad to fit the size of your hand.**



- 1 - For smaller hands, move the wrist pad to the left.**
- 2 - Attach/Detach.**
- 3 - For larger hands, move the wrist pad to the right.**

## iTouch™ Software for Logitech® Keyboards

## **(Windows® 95 or later)**

Your Logitech® cordless keyboard, with the included iTouch™ software, brings you closer and keeps you in touch with your desktop world. Browsing the web, sending e-mail, launching applications, and playing CDs or DVDs are more intuitive, easy to use, efficient, fun, and natural with your iTouch keyboard and software.

Set up and organize your iTouch keyboard your way. Using the iTouch keys and the iTouch software, customize your iTouch keyboard so you can be at your Internet home page, or favorite chat room, and run your e-mail application with the push of a button. The iTouch keys are divided into three groups, as defined by their functions.

## **Battery Warning!**

When battery power is low for the mouse or keyboard, the MouseWare® software displays a dialog box in Windows® 95, Windows® 98, Windows® 2000, and Windows NT® 4.0 suggesting that you change the batteries. It is recommended that when you change batteries you change them for the mouse and keyboard at the same time to optimize performance. When replacing the batteries, use alkalines. You may use other battery types, but do not mix them with alkalines. Note that the battery level indicator in the iTouch software or in the Mouse Properties is calibrated for alkaline batteries only, and will not give an accurate indication of battery life for batteries other than alkalines.

Discard all used batteries according to the battery manufacturer's instructions. Exercise care when handling batteries. When batteries are misused, they may explode or leak, causing burns and personal injury. Do not open a battery or mutilate, dispose of in a fire, expose to heat above 130° F (54° C), immerse in water, install improperly, or recharge. Conducting materials, such as rings, bracelets, and keys, can short out a battery causing it to overheat and possibly leak or explode. When you are not using your cordless device for long periods of time, remove the batteries and store them in a dry place at normal room temperature.

## **Cordless Desktop™ Icons**

Various Cordless Desktop icons appear on the Windows® Taskbar. These icons provide valuable information about the Cordless desktop, and make it possible for you to display keyboard and mouse property sheets easily and quickly. Double-clicking either the keyboard or mouse icon launches its respective property sheet in which you can specify options. Standard keyboard functions are also conveniently displayed on the Taskbar, which give the status of Num Lock, Caps Lock, and Scroll Lock. When mouse or keyboard battery power is low, a warning icon appears to let you know that it is time to change the batteries. Whenever you change the batteries, it is a good idea to change the batteries in both the keyboard and mouse at the same time for best performance.

## **The Internet Keys**

Depending upon the model of your Logitech® keyboard, there are three, four, or five programmable Internet keys, which you must set up before using. (Refer to the Quick Start Guide that ships with your keyboard or desktop system for the location of these special keys, and for the location of the other iTouch™ keys.) You can customize the Internet keys to suit your specific needs. For example, you can set up the Internet keys as follows:



The My Home™ key accesses your home web page or favorite Internet address



The E-mail key launches your e-mail application



The Search key displays a menu of Internet search engines



The Go key starts an application, accesses a web site, or displays a menu of applications and web sites



The Logitech® key (found only on the Cordless iTouch™ Pro keyboard) starts an application, accesses a web site, or displays a menu of applications and web sites, like the Go key example above.

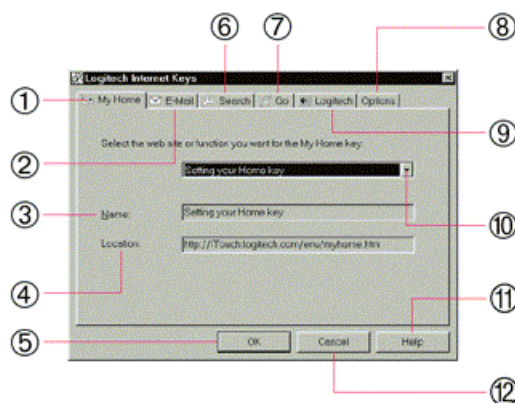
The Internet keys have built-in flexibility. If you find it more convenient, for example, to program the Search key to access a favorite web site instead of displaying a menu of Internet search engines, the iTouch software makes it very easy for you to do so, and provides visual feedback on your screen for the operations described above.

## Launching iTouch™

Launch the iTouch™ software by double-clicking the iTouch™ icon on the Windows® Taskbar.

## Setting Up the Internet Keys

1. **Connect to the Internet so you can easily assign Internet addresses to the iTouch™ Internet keys, if desired. Note that you must have an Internet account.**
2. **Launch the iTouch™ software. The Logitech® Internet Keys dialog box displays.**
3. **Choose an Internet key to set up by clicking a tab, such as the My Home™ tab or the Go tab.**



1 - Sets up the My Home key

2 - Sets up the E-mail key

3 - Enter a name for the web site, application

4 - Enter an Internet address or file path

5 - Click to save entries

6 - Sets up the Search key

7 - Sets up the Go key

8 - Shows on-screen effects and the iTo on the Taskbar

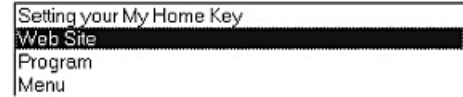
9 - Sets up the Logitech?key on the iTo keyboard

10 - Choose Web Site, Program, or Menu current key

11 - Click to get online help

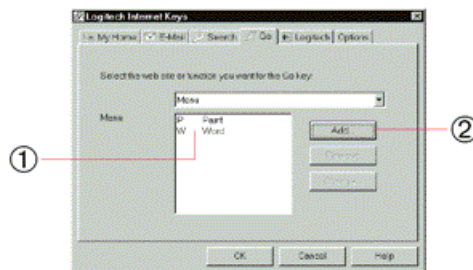
12 - Click to cancel entries

4. Choose "Web Site," "Program," or "Menu" for the key you are customizing. Click the down arrow to display these choices, then highlight your choice by clicking it.



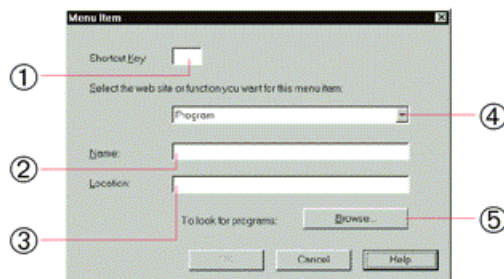
- **Web Site** links a web site to the key.
- **Program** links an application to the key.
- **Menu** links a menu of web addresses, Internet search engines, and/or applications to the key, which you will need to specify. The Internet Keys dialog box has a different layout when Menu is chosen.

5. Enter information about the web site, program, or menu.



- 1 - As you add items to the menu, one by one, their short cut key and name appear here
- 2 - Click the Add button to add web addresses applications to the menu

- **Web Site.** You can use the Browse button under the Location box of the Logitech Internet Keys dialog box to open your web browser (if it is not already running) and to navigate to the desired site. Enter a name for the web site in the Name box, then enter the web address in the Location box.
- **Program.** Use the Browse button under the Location box to find the application. Enter a name for the application in the Name box, then enter a file path in the Location box.
- **Menu.** Click the Add button to display the Menu Item dialog box. Enter information in this dialog box, as indicated below.



- 1 - Enter a letter or number for the shortcut key; pressing this key will launch the web site or application directly

- 2 - Enter a name for the web site or application

- 3 - Enter an Internet address or file path

- 4 - Choose "Web Site" or "Program"

- 5 - Click the Browse button to find the web site application

When specifying an Internet address, you can navigate to the desired web site, and once there, press CTRL and the iTouch key you are setting up (e.g., the Go key) to have the Internet address entered automatically in the Location box.

6. **Click the OK button to save your changes.** To modify your entries or to make changes to your iTouch keys at a later time, refer to Steps 1-5.

## Assigning a Web Site to an Internet Key

You can easily assign a web site to an iTouch™ key while surfing the Net.

1. **While logged on to the Internet, navigate to the web site to which you want to assign an iTouch key.**
2. **After you have reached the desired web site, press CTRL and the iTouch key you are assigning.** For example, if you are assigning the My Home™ key, hold down the CTRL key and press the My Home key.

## The Multimedia Keys

Play CD music and DVD music and movies (sound card or AV board required) with the Multimedia keys.

- ▶/|| **Play/Pause.** Plays or pauses the CD/DVD.
  - **Stop.** Stops play.
- ◀◀ **Previous Track.** Plays the previous track.
- ▶▶ **Next Track.** Plays the next track.
- 🔇 **Mute.** Greatly reduces the sound volume.
- ▲ **Volume Up.** Increases sound volume.
- ▼ **Volume Down.** Decreases sound volume.

The iTouch™ software provides visual feedback on your screen for each of these operations. To turn off visual feedback, open the iTouch software and click the Options tab. Remove the check mark in the box for "Show On-Screen Key Effects."

## Using the Suspend Key

Access the Windows® Shut Down dialog box, where you can put your system on stand-by or shut down Windows.

## More Information about the iTouch™ Keys

A quick way to get information about an Internet key, the first time you use that key, is to use the Logitech® iTouch™ web site.

1. **Connect to the Internet to access the Logitech iTouch web site.**
2. **Press the key you want information about, then click "Yes" in the dialog box that displays.**

### 3. Read the instructions on setting up the button.

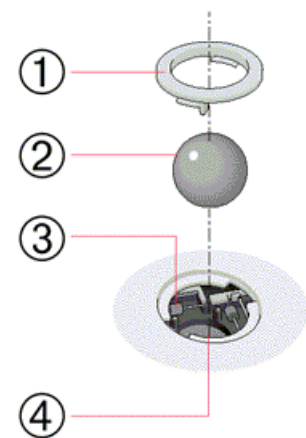
You can also obtain information about the iTouch software by clicking a help key while using the iTouch software, or by double-clicking the help folder in the Logitech iTouch program group. To access the Logitech iTouch program group from the Windows® Taskbar, choose Start, Programs, Logitech iTouch, then Help.

## Product Maintenance

### Cleaning the Mouse

If the cursor skips or moves abnormally, clean the ball of your mouse if your pointing device uses this technology.

1. **Remove the retainer ring to remove the ball.** On the bottom of the mouse, press in the direction of the Open arrow imprinted on the retainer ring cover.
2. **Wipe the ball with a clean, lint-free cloth, then blow carefully into the ball-cage to dislodge dust and lint.** Look for a build-up of dirt on the rubber roller(s) inside the ball-cage.
3. **If dirty, clean the roller(s) using a cotton swab moistened lightly with isopropyl (rubbing) alcohol.** After cleaning, make sure the roller(s) are still centered in their channels. Make sure that fluff from the swab is not left on the roller(s).
4. **Replace the ball and retainer ring.**



- |                   |                   |
|-------------------|-------------------|
| 1 - Retainer ring | 3 - Inside roller |
| 2 - Ball          | 4 - Ball-cage     |

### Cleaning the Trackball

Logitech® trackballs are very reliable, and thanks to Marble® Technology, they are especially resistant to dirt and dust while most other trackballs need regular cleaning. In case a particle of dirt blocks or causes the ball to move less smoothly, you should clean the ball as follows:

1. **Turn off your computer and unplug your trackball.**
2. **For TrackMan® Marble® Wheel, insert a straight pin into the indentation on the retainer ring and pull counter-clockwise to remove the ring.**
3. **For TrackMan® Marble® FX, push the ball in the direction of the larger opening to remove the ball from its socket.**
4. **Wipe the ball with a clean, lint-free cloth, then blow carefully into the socket or ball-cage to dislodge dust and lint.**

**Note** When cleaning TrackMan® Marble®, be careful not to remove the small contact points on which the trackball rests.

5. **Replace the ball (or the ball and retainer ring for the TrackMan Marble Wheel).**



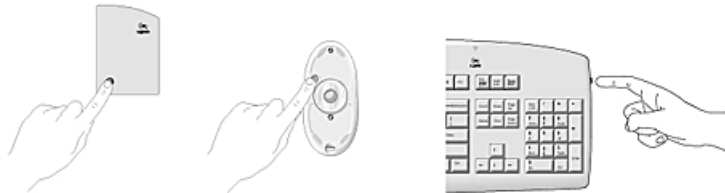
## 6. Plug in your trackball and turn on your computer.

**Note** For the cordless trackball, removing the ball for long periods of time may accelerate the rate at which battery power is used.

# Troubleshooting

## Cordless Product Does Not Work

- Make sure you have connected the receiver correctly. The receiver cable goes into the computer's PS/2 mouse port (Windows® only) or USB port. **For optimal performance, place the receiver at least 8 inches or 20 centimeters away from other electrical devices, such as the computer, the computer monitor, or external storage drives.**
- Make sure you have installed the batteries correctly. Check to make sure the batteries you have installed are not dead. Try the batteries in another device.
- For the cordless trackball, removing the ball for long periods of time may accelerate the rate at which battery power is used.
- Establish communication between the receiver and the mouse, trackball, or keyboard. Press the Connect button on the receiver first. Then press the Connect button under the mouse, trackball, or keyboard. If you have a Logitech® cordless keyboard and pointing device, make sure to press the connect button on both the pointing device and keyboard.



- If you are working on a metallic surface, try using a mouse pad.
- Try unplugging then reconnecting the receiver cable to the computer.

## Cordless Product Is Not Detected

- Make sure the receiver cable is plugged into the PS/2 mouse port or USB port. **For a Windows® PS/2 mouse port connection only, do not plug or unplug the receiver cable while the computer is running.**
- Make sure the PS/2 mouse port (Windows® only) or USB port has the proper configuration. Refer to your computer documentation for the correct port configuration.
- In Windows you may have other system devices that conflict with the mouse, trackball, or keyboard. Check the IRQ/address settings of these devices for conflicts, and change the settings as required. Refer to your computer documentation to make these changes.
- Try unplugging then reconnecting the receiver cable to the computer.

## Screen Cursor Does Not Move Properly

- Clean the mouse ball and roller(s) if your mouse uses this technology.
- For cordless devices, try changing the position of the receiver. It is possible that the receiver may be too far from the mouse or trackball. Or the computer monitor (or a large metal object) may be interfering with the receiver's radio reception. Also, the batteries may be low. Check the batteries as described previously. You may also need to re-establish the connection between the mouse/trackball and its receiver. To do this, press the Connect button on the receiver, then press the Connect button on the bottom of the mouse or trackball.
- If you are using a mouse with optical technology and your tabletop surface is red in color or is highly reflective like a mirror, your tabletop surface may be interfering with the optical sensor of the mouse. Try using a traditional mouse pad, or use the mouse on a different tabletop surface.

## Non-Cordless Pointing Device Is Not Detected

- Make sure the mouse or trackball cable is plugged into the right port - USB or PS/2 (PS/2 is for Windows® only). When installing the mouse or trackball on a PC, install the MouseWare® software before connecting the mouse or trackball cable. Reboot the system.
- Make sure the PS/2 mouse port (Windows® only) or USB port has the proper configuration. Refer to your computer documentation for the correct port configuration.
- In Windows you may have other system devices (e.g., a modem card) that conflict with the mouse or trackball. Check the IRQ/address settings of these devices for conflicts, and change the settings as required. If the problem persists, please contact technical support.

## Contacts

Country	Address	Product Information (Infoline)	Technical Help (Hotline)
Benelux (B, LUX, NL) <b>LOGITECH Benelux</b>	Bedrijvenpark Lindenholt Kerkenbos 1045 NL - 6546 BB <i>Nijmegen</i>	+31 (0) 10 243 88 97 <i>Nederlands</i> +32 (0) 2 626 89 63 <i>Français (Belg.)</i> +32 (0) 2 626 89 61 <i>Vlaams (Belg.)</i>	+31 (0) 10 243 88 98 <i>Nederlands</i> +32 (0) 2 626 89 62 <i>Français (Belg.)</i> +32 (0) 2 626 89 60 <i>Vlaams (Belg.)</i>
Denmark <b>LOGITECH Representation</b>	Århusgade 88, 4.sal DK - 2100 <i>København Ø</i>	+45-35 44 55 16	+45-35 44 55 17
Deutschland & Eastern European countries <b>LOGITECH GmbH</b>	Gabriele-Münter-Strasse 3 D - 82110 <i>Germering</i>	+49 (0) 69-92 032 165	+49 (0) 69-92 032 166

<p><b>España</b></p> <p><b>LOGITECH S.A.</b></p>	<p><b>Oficina de representación en España</b></p> <p>Calle Nicaragua, 48 2º 1ª</p> <p>E - 08029 <i>Barcelona</i></p>	+34 91-375 33 68	+34 91-375 33 69
<p><b>France</b></p> <p><b>LOGITECH France SARL</b></p>	<p>26-28 Rue Danielle Casanova</p> <p>F - 75002 <i>Paris</i></p>	+33 (0) 1-43 62 34 13	+33 (0) 1-43 62 34 14
<p><b>Hungary</b></p> <p><b>IMSZ Kft. (Logitech)</b></p>	<p>Att. Kovacs Dora / Koszegi Mihaly</p> <p>Vamhaz Krt. 10. 1/13</p> <p>1053 <i>Budapest</i> - HUNGARY</p>	+41-21 863 54 00 <i>English</i>	+41-21 863 54 01 <i>English</i>
<p><b>Italia</b></p> <p><b>LOGITECH Italia S.r.l</b></p>	<p>Centro Direzionale Colleoni</p> <p>Palazzo Andromeda 3</p> <p>I - 20041 <i>Agrate Brianza</i>, MI</p>	+39-02 215 1062	+39-02 214 0871
<p><b>Österreich</b></p> <p><b>LOGITECH Repräsentanz</b></p>	<p>Göra 580, Postfach 77</p> <p>A - 5580 <i>Tamsweg</i></p>	+43 (0) 1 502 221 349	+43 (0) 1 502 221 348
<p><b>Schweiz / Suisse / Svizzera</b></p> <p><b>LOGITECH Switzerland</b></p>	<p>Täferenstrasse 16</p> <p>CH - 5405 <i>Baden-Dättwil</i></p>	D+41 (0) 21 863 54 10 F+41 (0) 21 863 54 30 I+41 (0) 21 863 54 60	D+41 (0) 21 863 54 11 F+41 (0) 21 863 54 31 I+41 (0) 21 863 54 61
<p><b>Sweden, Iceland, Norway &amp; Finland</b></p> <p><b>Logitech Representation</b></p>	<p>Geometrivägen 3-7</p> <p>S - 141 75 <i>Kungens Kurva</i></p>	+46 (0) 8-519 920 19 <i>Sweden</i> +47 (0) 23 500 084 <i>Norway</i> +358 (0) 9 817 100 21 <i>Finland</i>	+46 (0) 8-519 920 20 <i>Sweden</i> +47 (0) 23 500 083 <i>Norway</i> +358 (0) 9 817 100 21 <i>Finland</i>
<p><b>UK + Eire</b></p> <p><b>LOGI (U.K.) Ltd.</b></p>	<p>The Old Court House</p> <p>267-273 High Street</p> <p>GB - <i>Dorking</i>, RH4 1RL, Surrey</p>	+44 (0) 171 309 01 27	+44 (0) 171 309 01 26
<b>Logitech Headquarters</b>			
<p><b>European, Middle Eastern &amp; African Headquarters</b></p> <p><b>LOGITECH Trading S.A.</b></p>	<p>Moulin-du-Choc</p> <p>CH - 1122 <i>Romanel-sur-Morges</i></p>	+41 (0) 21 863 54 00 <i>English</i>  +41 (0) 21 863 54 02	+41 (0) 21 863 54 01 <i>English</i>  +41 (0) 21 863 54 02
<p><b>Corporate Headquarters</b></p> <p><b>LOGITECH Inc.</b></p>	<p>6505 Kaiser Drive</p> <p>USA - <i>Fremont</i>, CA 94555</p>	(800) 231-7717	+1 (702) 269 3457

<b>Asian Pacific Headquarters</b>  <b>LOGITECH Far East Ltd.</b>	<b>#2 Creation Road IV</b>  <b>Science-Based - Industrial Park</b>  <i>Hsinchu, Taiwan</i>		<b>+886 (2) 27466601 x2206</b>
<b>Australia</b>  <b>Logitech Australia Computer Peripherals Pty Ltd.</b>	<b>Level 2, 633 Pittwater Road</b> <b>AUS - <i>Dee Why</i> NSW 2099, Australia</b>		<b>+61 (02) 9804 6968</b> <b>+61 (02) 9972 3561</b>
<b>Canada</b>  <b>Sales &amp; Marketing Office</b>	<b>5025 Orbitor Dr., Bldg. 6, Suite 200</b> <b>CDN - <i>Mississauga</i>, ON L4W 4Y5</b>	<b>(800) 231-7717</b>	<b>+1 702 269 3457</b>
<b>Japan</b>  <b>LOGICOOL Co. Ltd.</b>	<b>Ryoshin Ginza East Mirror Bldg., 7F</b> <b>3-15-10 Ginza</b> <b>Chuo-ku, <i>Tokyo</i>, Japan</b> <b>104-0061</b>		<b>+81 (3) 3543 2122</b>  <b>+81 (3) 3543 2911</b>
<b><i>In Latin America and the Caribbean:</i></b>	<b>Contact your local authorized distributor, or call our Customer Support Hotline in the USA, at +1 (702) 269 3457.</b>		
<b>World Wide Web: <a href="http://www.logitech.com">http://www.logitech.com</a> FTP: <a href="ftp://ftp.logitech.com/pub">ftp://ftp.logitech.com/pub</a></b>			

\* Refer to your Registration Card for the most up-to-date addresses and phone numbers.

**Note: For USA and Canadian customers only: please read the following prior to exchanging or returning your product. To exchange or return your product within the first 30 days, we recommend returning it to the point of purchase. If you return or exchange your product through Logitech, you must first contact Customer Support to obtain a Return Merchandise Authorization (RMA) number. Customer Support will give you an RMA number and a special address for the exchange.**