

Getting started with  
*Première utilisation*  
Logitech® Wireless Headset F540



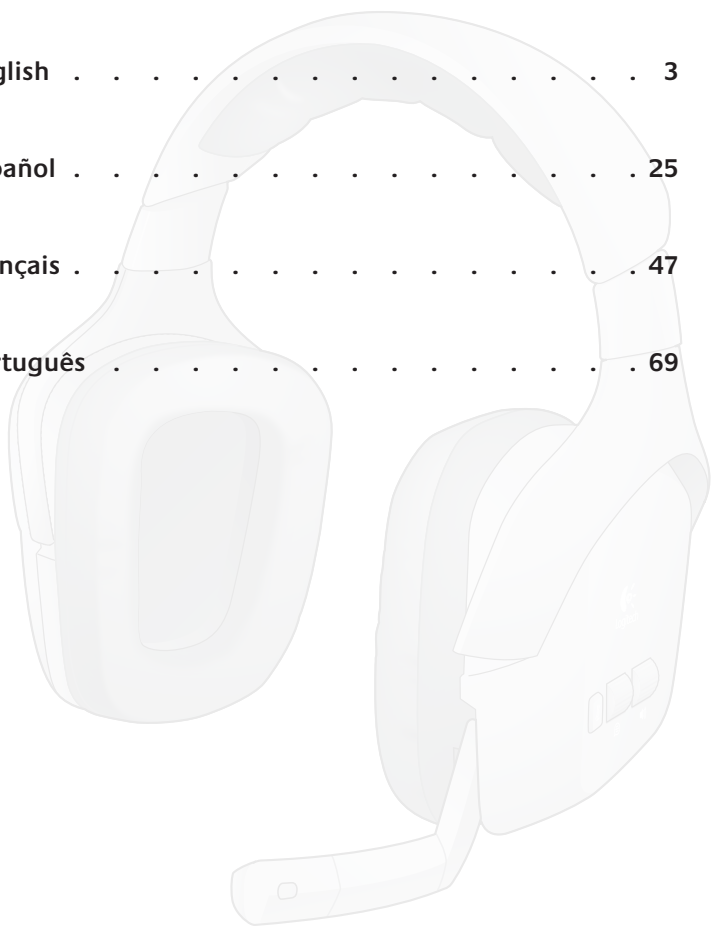
## Languages

English . . . . . 3

Español . . . . . 25

Français . . . . . 47

Português . . . . . 69



## Contents

<b>Package contents</b>	4
<b>Powering up the wireless base station</b>	5
Charging the headset	5
<b>F540 setup with PS3™</b>	6
Connecting PS3 game audio	6
If you use HDMI or digital optical for PS3 audio	7
If you use PS3 analog AV cable for audio	8
Alternative: If you want to use your audio out from your TV or AV receiver	9
Connecting PS3 voice chat	10
<b>F540 setup with Xbox 360®</b>	11
Connecting Xbox 360 game audio	11
If you use HDMI or digital optical for Xbox 360 audio	12
If you use the red/white RCA connectors on the Xbox 360 AV cable for audio	13
Alternative Xbox 360 wireless base station setup	14
Connecting Xbox 360 voice chat	15
<b>Connecting other AV sources</b>	16
<b>Using the headset</b>	17
Features	17
Turning on the headset	18
Using the input selector button	18
Using the volume rollers and microphone mute button	19
Turning off the headset	19
<b>Troubleshooting</b>	20
Adjusting the headset fit	20
<b>What do you think?</b>	22
<b>Logitech hardware product limited warranty</b>	24
<b>Logitech support telephone numbers</b>	91

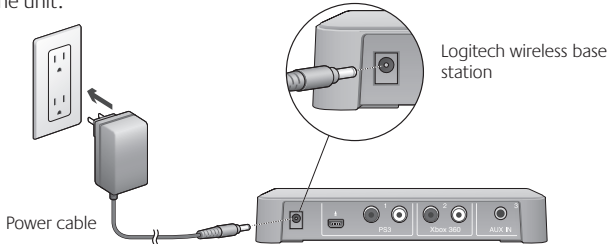
## Package contents



1. Headset F540
2. Wireless base station
3. RCA-to-RCA passthrough cable
4. 2.5 mm Xbox 360 voice cable
5. Mini-USB PS3 voice cable
6. Micro-USB headset charging cable
7. Power cable
8. Getting started guide

## Powering up the wireless base station

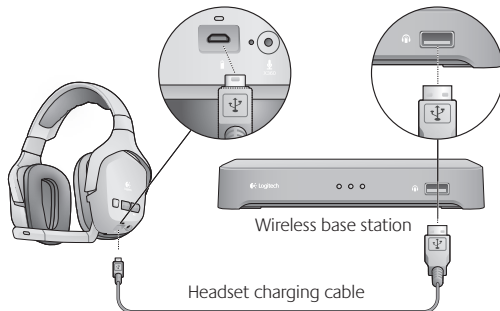
Using the included power cable, plug your wireless base station into an available AC outlet to power up the unit.



## Charging the headset

Your Logitech Wireless Headset F540 is rechargeable and should have some charge when you take it out of the package. It's recommended to charge the headset fully before use.

- To charge the headset, use the included headset charging cable. Plug the small connector into the headset and the large connector into the port on the front of the wireless base station. The LED above the charging port of the headset will turn orange while charging and green when it's fully charged.
- The headset will take approximately 3-4 hours to fully re-charge from a completely drained state. If you use the headset while it's being charged, the charging cycle will take longer.
- When the headset rechargeable battery has only 30 minutes of charge left, you will hear an audible warning through the headset speakers. This warning will repeat intermittently until you plug in the headset for charging or when the battery is fully drained. The LED above the charging port on the headset will also turn red when the charge is low.



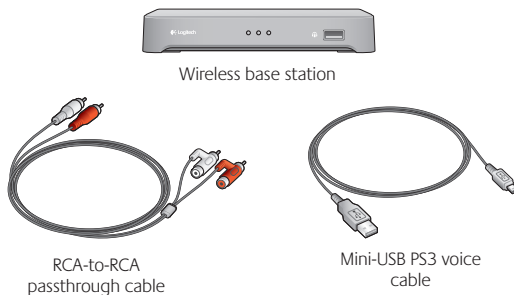
## F540 setup with PS3™

To use all the features of the Headset F540, you'll need to make two connections: one for game audio and one for voice chat.

You make the game audio connection between the Logitech wireless base station and the PS3. Or you can connect the wireless base station to your primary audio system (television, home theater system, AV receiver, or audio switch).

You make the voice connection between the wireless base station and the PS3 using the Logitech Mini-USB PS3 voice cable.

To make the connections described in this section, you may need the items shown below, which are included with the Headset F540:



### Connecting PS3 game audio

How you make this connection is dependent upon how you have connected your PS3 to your primary audio system. While every home gaming environment may be different, there are two basic ways to hook up your PS3:

- A digital connection using an HDMI or digital optical cable
- An analog connection using the PS3 AV cable

## If you use HDMI or digital optical for PS3 audio

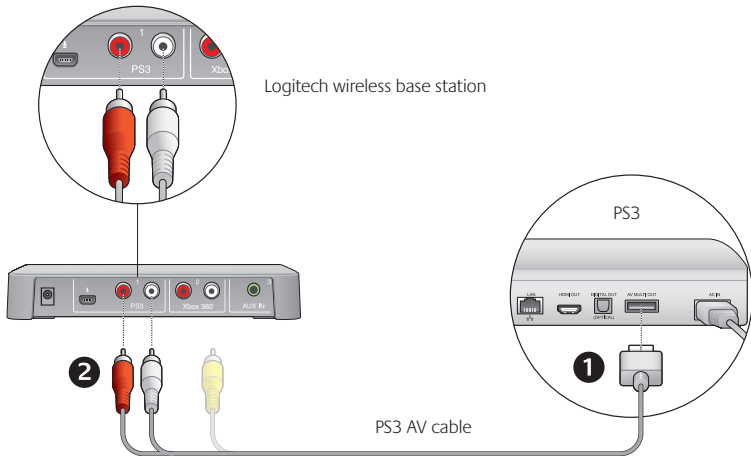


Figure 1

If you are using an HDMI or digital optical cable to connect your PS3 to your primary audio system, use the PS3 AV cable (recommended) setup below or the alternative shown in Figure 3.

### Recommended setup for the wireless base station (Fig. 1)

1. Connect the PS3 AV cable (typically included with the PS3) to the back of the PS3.
2. Connect the red and white RCA plugs of the PS3 AV cable to the PS3 ports on the back of the wireless base station.
3. Adjust the audio settings using the PS3™ XMediaBar™. You need to enable multi-output audio in the PS3 system (firmware 3.00 or later) settings for the PS3 to transmit stereo audio to the Headset F540.

Within the XMediaBar, navigate to

- Settings
- Sound Settings
- Audio Multi-Output

In Audio Multi-Output, select **“On”** to turn on the Audio Multi-Output feature.

## If you use PS3 analog AV cable for audio

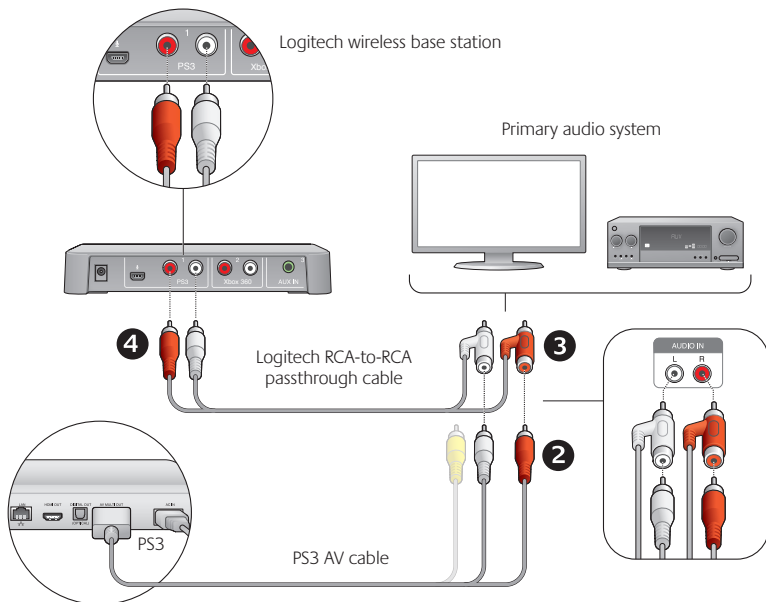


Figure 2

If you are using the red and white stereo connectors of the PS3 AV cable to connect your PS3 to your primary audio system, use the following wireless base station setup or the alternative on page 9.

### Recommended setup for the wireless base station (Fig. 2)

1. Unplug the red and white connectors of the PS3 AV cable from your primary audio system.
2. Plug these red and white connectors directly into the Logitech RCA-to-RCA passthrough cable connectors.
3. Plug the male connectors of the Logitech RCA-to-RCA passthrough cable to your primary audio system (where the PS3 AV cable was previously connected).
4. On the other end of the Logitech RCA-to-RCA passthrough cable, plug the red and white connectors into the PS3 ports on the back of the wireless base station.



## Alternative: If you want to use your audio out from your TV or AV receiver

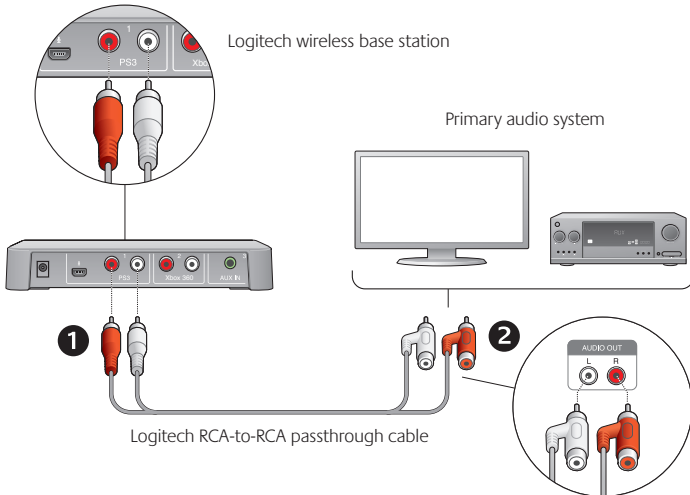


Figure 3

If the recommended steps are inconvenient or don't work on your system setup, please follow the steps below to connect the wireless base station to your primary audio system:

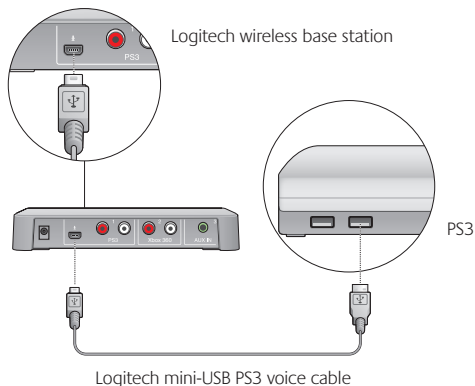
1. Using the Logitech RCA-to-RCA passthrough cable, connect one end to the PS3 ports on the back of the wireless base station.
2. Connect the other end of the cable to the red and white stereo audio-out ports on the back of your primary audio system.

## Connecting PS3 voice chat

1. To experience voice chat in PS3 games, first use the Logitech Mini-USB PS3 voice cable to connect the wireless base station to the PS3, as shown in the picture below.
2. Select the microphone as the active audio input device on PS3. In the PS3 system XMediaBar™, navigate to
  - Settings
  - Accessory Settings
  - Audio Device Settings

In the Input device and Output device fields, select Logitech Wireless Headset as the active device.

Optional: You can also adjust the microphone sensitivity in this PS3 system pane.



## F540 setup with Xbox 360®

To use all the features of the Headset F540, you'll need to make two connections: one for game audio and one for voice chat.

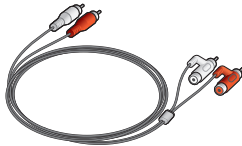
You make the game audio connection between the Logitech® Headset F540 and the Xbox 360. Or you can connect the wireless base station to your primary audio system (television, home theater system, AV receiver, or audio switch).

You make the voice connection between the wireless base station and an Xbox 360 game controller using the Logitech 2.5 mm Xbox 360 voice cable.

To make the connections described in this section, you may need the items shown below, which are included with the Headset F540:



Wireless base station



RCA-to-RCA passthrough cable



2.5 mm Xbox 360 voice cable

## Connecting Xbox 360 game audio

How you make this connection is dependent upon how you have connected your Xbox 360 to your primary audio system. While every home gaming environment may be different, there are two basic ways to hook up your Xbox 360:

- A digital connection using an HDMI or digital optical cable
- An analog connection using the red and white RCA connectors of the Xbox 360 component HD AV cable

## If you use HDMI or digital optical for Xbox 360 audio

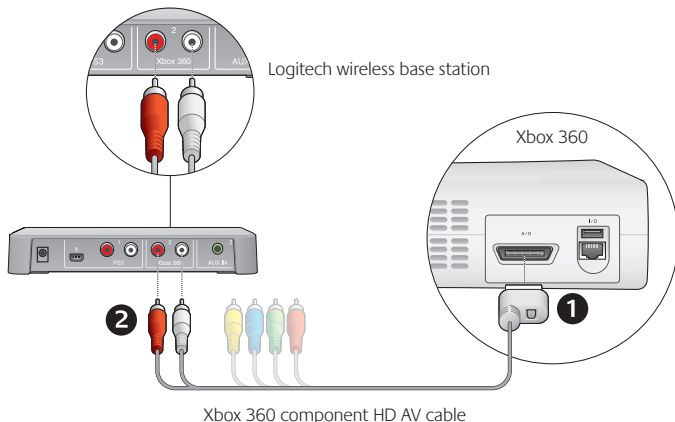


Figure 4

If you are using an HDMI or digital optical cable to connect your Xbox 360 to your primary audio system, use the Xbox 360 component HD AV cable (recommended) to connect the wireless base station to your Xbox 360/primary audio system, or the alternative setup on page 14.

### Recommended wireless base station setup (Fig.4)

1. Connect the Xbox 360 component HD AV cable (typically included with the Xbox 360) to the back of the Xbox 360. Note that with some Xbox 360 models, you cannot connect both an HDMI cable and the Xbox 360 component HD AV cable. (If you experience this issue, please use the alternative wireless base station setup shown in Fig. 6)
2. Connect the red and white stereo RCA plugs to the Xbox 360 ports on the Logitech wireless base station.

## If you use the red/white RCA connectors on the Xbox 360 AV cable for audio

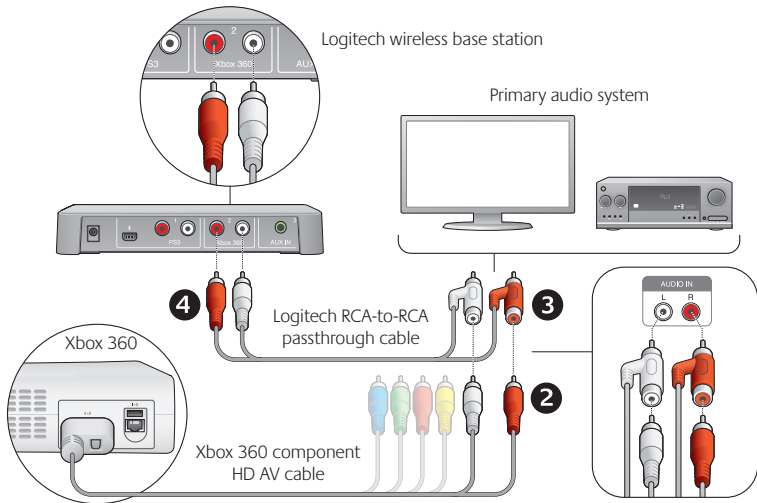


Figure 5

If you are using the red and white RCA analog connectors of the Xbox 360 component HD AV cable to connect your Xbox 360 to your primary audio system, use one of the following wireless base station setups in this section.

### Recommended setup for the wireless base station (Fig. 5)

1. Unplug the red and white connectors of the Xbox 360 component HD AV cable from your primary audio system.
2. Plug these red and white connectors directly into the Logitech RCA-to-RCA passthrough cable connectors.
3. Plug the male connectors of the Logitech RCA-to-RCA passthrough cable to your primary audio system (where the Xbox 360 component HD AV cable was previously connected).
4. On the other end of the Logitech RCA-to-RCA passthrough cable, plug the red and white connectors into the Xbox 360 ports on the back of the wireless base station.

## Alternative Xbox 360 wireless base station setup

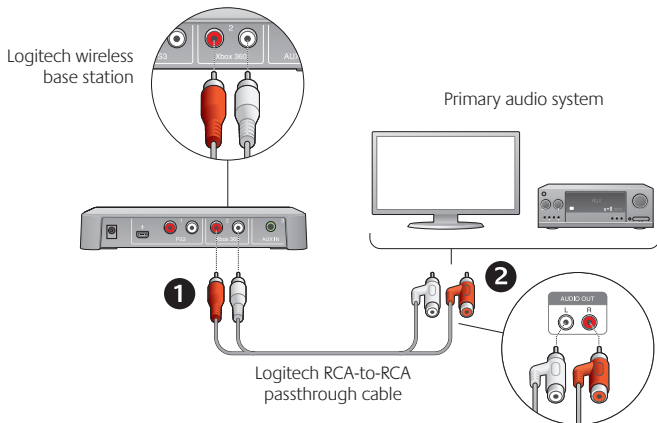


Figure 6

If the previous recommended connections are inconvenient or don't work for your system setup, please follow the steps below to connect the wireless base station to your primary audio system:

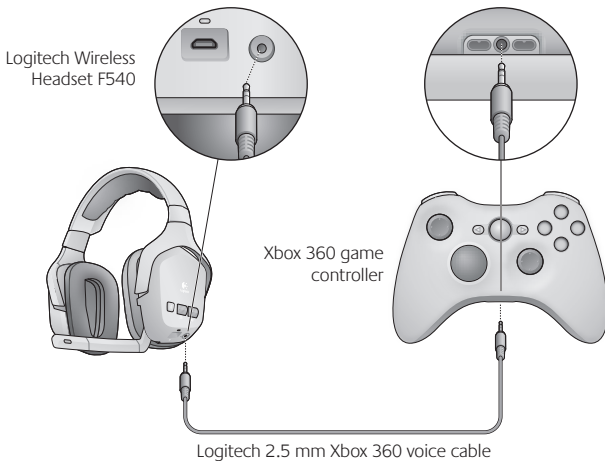
1. Using the Logitech RCA-to-RCA passthrough cable, connect one end to the Xbox 360 ports on the back of the wireless base station.
2. Connect the other end of the cable to the red and white stereo audio-out ports on the back of your primary audio system.

## Connecting Xbox 360 voice chat

To experience voice chat in Xbox 360 games, connect the Headset F540 directly to an Xbox 360 game controller using the Logitech 2.5 mm Xbox 360 voice cable, as shown in the picture below.

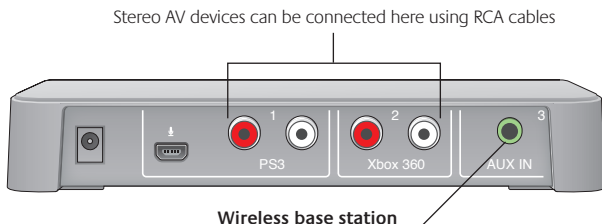
To get the best voice chat performance, including using the voice audio volume roller on the headset, we recommend you adjust your Xbox 360 system settings as described:

1. Press the Xbox Guide button on the game controller, then navigate to Settings > Preferences > Voice
2. At the top of the screen, set the volume to level 10
3. Select “Play Through Headset” under Voice Output



## Connecting other AV sources

You can use the Headset F540 to listen to a variety of audio-video sources, including TVs, DVD players, MP3 players, and more. To listen to any of these devices, use standard RCA or 3.5 mm cables (not included) to connect these devices to the back of the wireless base station.



AV devices (e.g., MP3 player) using a 3.5 mm cable can be connected here

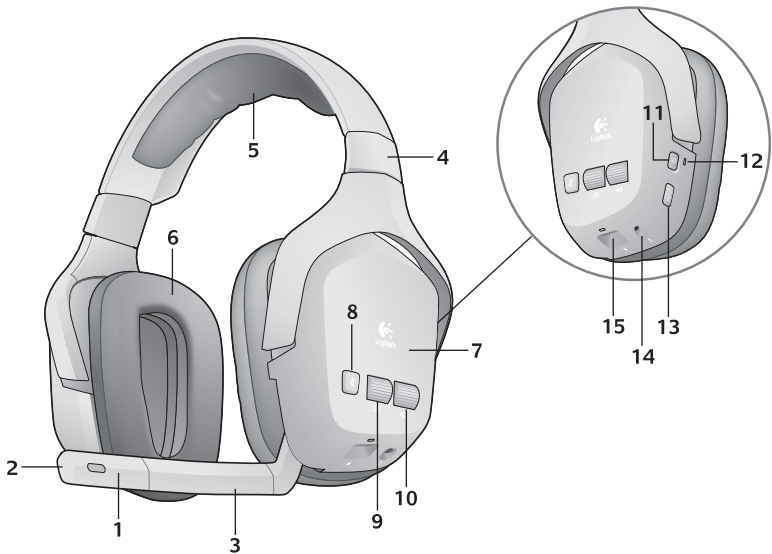
For example, if you have connected the wireless base station to a PS3 game console, (leaving the Xbox 360 ports open), you could connect a DVD player to the wireless base station. To make this connection, use RCA cables to connect the audio-out ports on the DVD player to the open Xbox 360 ports on the back of the wireless base station. If you also have an MP3 player, you could connect it using a 3.5 mm cable, which you would plug into the AUX IN port on the back of the wireless base station.



## Using the headset

After setting up the wireless base station, you are now ready to use the Headset F540. This section tells you how by covering headset features, controls, and adjustments.

### Features



1. Noise-canceling microphone
2. Microphone mute light
3. Flexible, rotating microphone boom
4. Precision headband adjustment
5. Comfort headband pad
6. Plush ear pads
7. Closed-back, noise-isolating ear cups
8. Microphone mute button
9. Voice audio volume roller
10. Game audio volume roller
11. Power button
12. Wireless connection status light
13. Input selector
14. Xbox 360 voice connection port
15. Headset charging port