

## Logitech 2.4GHz Cordless Mouse M-R0003



### English

No pointer movement or erratic movement

### Español

El puntero no se mueve o realiza movimientos erráticos

### Français

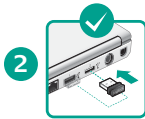
Pointeur immobile ou incontrôlable

### Português

Nenhum movimento ou movimento aleatório do ponteiro



1



2



3



4



5

### English

1. Power on?
2. Check receiver; change ports.
3. Check battery
4. Try a different surface.
5. Repair connection between mouse and USB receiver: launch the Connect utility from [www.logitech.com/downloads](http://www.logitech.com/downloads).
6. **Desktop users:** If erratic cursor movement occurs or button clicks do not register properly, insert the Nano receiver in a USB port closer to the mouse. If this does not work, order an optional USB Stand from Logitech Customer Support. (Refer to the illustration in this section to set up the USB Stand.)

### Español

1. ¿Está encendido?
2. Compruebe el receptor; cambie de puerto.
3. Compruebe la pila
4. Pruebe el mouse en otra superficie.
5. Repare la conexión entre el mouse y el receptor USB: inicie la Utilidad de conexión desde [www.logitech.com/downloads](http://www.logitech.com/downloads).
6. **Usuarios de computadoras de sobremesa:** si el puntero se mueve de forma irregular o si al hacer click los botones no responden correctamente, inserte el nanoreceptor en un puerto USB que se encuentre más cerca del mouse. Si esto no funciona, puede pedir una base USB opcional al equipo de atención al cliente de Logitech. (En la ilustración de esta sección puede ver cómo se instala la base USB.)

### Français

1. Souris activée?
2. Vérifiez le récepteur; changez de port.
3. Vérifiez la pile.
4. Essayez une autre surface.
5. Réparez la connexion entre la souris et le récepteur USB: lancez l'utilitaire de connexion disponible sur la page [www.logitech.com/downloads](http://www.logitech.com/downloads).
6. **Utilisateurs d'ordinateur de bureau:** si le mouvement du pointeur est incontrôlable ou si les clics de bouton ne sont pas enregistrés correctement, insérez le récepteur Nano dans un port USB situé plus près de la souris. Si cela ne résout pas le problème, commandez un support USB facultatif auprès du service clientèle de Logitech (rapportez-vous au schéma de cette section pour configurer le support USB).

### Português

1. Está ligado?
2. Verifique o receptor, troque portas.
3. Verifique a bateria
4. Experimente uma superfície diferente.
5. Corrija a conexão entre o mouse e o receptor USB: Inicie o Utilitário de conexão a partir de [www.logitech.com/downloads](http://www.logitech.com/downloads).
6. **Usuários de computadores de mesa:** Se ocorrerem movimentos irregulares do cursor ou se cliques de botões não forem registrados corretamente, insira o receptor Nano em uma porta USB mais próxima do mouse. Se isso não corrigir o problema, contate a assistência ao cliente da Logitech e peça um suporte USB opcional. (Consulte a ilustração nesta seção para configurar o suporte USB.)



**Nano FS** 2.4GHz bidirectional receiver  
 MIN: C-UR058  
 Rating: 5.0V ~ 100mA  
 FCC ID: DZLCLUR058  
 IC: 18078-CUR058  
 CE  
 RoHS  
 WEEE  
 DZL-C-UR058-B1  
 2012.01.15  
 CMI ID: 2607030000  
 Made in China



### Federal Communication Commission Interference Statement

This equipment has been tested and found to comply with the limits for a Class B digital device, pursuant to Part 15 of the FCC Rules. These limits are designed to provide reasonable protection against harmful interference in a residential installation. This equipment generates, uses and can radiate radio frequency energy and, if not installed and used in accordance with the instructions, may cause harmful interference to radio communications. However, there is no guarantee that interference will not occur in a particular installation. If this equipment does cause harmful interference to radio or television reception, which can be determined by turning the equipment off and on, the user is encouraged to try to correct the interference by one of the following measures:  
 - Reorient or relocate the receiving antenna.  
 - Increase the separation between the equipment and receiver.  
 - Connect the equipment into an outlet on a circuit different from that to which the receiver is connected.  
 - Consult the dealer or an experienced radio/TV technician for help.  
**FCC Caution:** Any changes or modifications not expressly approved by the party responsible for compliance could void the user's authority to operate this equipment. This device complies with Part 15 of the FCC Rules. Operation is subject to the following two conditions: (1) This device may not cause harmful interference, and (2) this device must accept any interference received, including interference that may cause undesired operation.

### Industry Canada Statement

This device complies with RSS-210 of the Industry Canada Rules. Operation is subject to the following two conditions:  
 1) this device may not cause interference and 2) this device must accept any interference, including interference that may cause undesired operation of the device

經型式認證合格之低功率射頻電機，非經許可，公司、商號或使用者均不得擅自變更頻率、加大功率或變更原設計之特性及功能。  
 低功率射頻電機之使用不得影響飛航安全及干擾合法通信；經發現有干擾現象時，應立即停用，並改善至無干擾時方得繼續使用。前項合法通信，指依電信法規定作業之無線電通信。低功率射頻電機須忍受合法通信或工業、科學及醫療用電波輻射性電機設備之干擾。



[www.logitech.com/support](http://www.logitech.com/support)

### English

FAQs  
 Troubleshooting  
 Downloads  
 Forums  
 Registration  
 Warranty information

### Français

Questions fréquentes  
 Dépannage  
 Téléchargements  
 Forums  
 Inscription  
 Informations sur la garantie

### Español

Preguntas más habituales  
 Resolución de problemas  
 Descargas  
 Foros  
 Registro  
 Información de garantía

### Português

Perguntas Mais Frequentes  
 Resolução de problemas  
 Transferências  
 Fóruns  
 Registo  
 Informação da garantia



United States	+1 646-454-3200
Argentina	+0800 555 3284
Brasil	+0800 891 4173
Canada	1-866-934-5644
Chile	1230 020 5484
Latin America	+55 11 3444 6761
Mexico	001 800 578 9619