

## Keyboard features: hot keys



To enjoy **all** the features of your keyboard or to customize it to suit your needs, please install the Logitech® SetPoint™ Software that comes with your product.

1. **Logitech application switcher**
2. **Internet zone**
  - a. Email application
  - b. Internet browser
  - c. Internet search engine
  - d. Messenger
3. **Multimedia navigation**
  - a. Previous track
  - b. Play/pause track
  - c. Next track
4. **Volume zone**
  - a. Mute volume
  - b. Volume down
  - c. Volume up
5. **Convenience zone**
  - a. Windows® calculator
  - b. Battery status check  
(See **Battery management** for more information.)



1. **Fn** key (for use with F-keys)

## 2. Productivity zone

**Fn+F1** Launches document application

**Fn+F2** Launches spreadsheet application

**Fn+F3** Launches presentation application

**Fn+F4** Launches calendar

## 3. Favorites zone

**Fn+F5 to F8** program your favorite application, folder, or web site with a long, simultaneous press of **Fn** and the corresponding **F5, F6, F7, or F8** key (just like the presets of a car radio).

## Keyboard features: F-keys



To enjoy **all** the features of your keyboard or to customize it to suit your needs, please install the Logitech® SetPoint™ Software that comes with your product.



User-friendly enhanced F-keys let you easily launch applications or control your music. To use the enhanced functions (gray icons), press the **Fn** key and the **F-Key** you want to use simultaneously.



### 4. Internet zone

- Fn**+F9 Save file
- Fn**+F10 Undo last operation
- Fn**+F11 Redo last operation
- Fn**+F12 Opens/closes CD-DVD tray

### 5. Miscellaneous


- Fn**+ **Print Screen**: Contextual menu
- Fn**+**Pause/Break**: Scroll lock
- Fn**+**Battery status check**: PC sleep mode

## Mouse features: buttons and scrolling

1. Left click
2. Right click
3. Scroll wheel – Use SetPoint software to set your preferred speed and acceleration. (See **Customizing the keyboard and mouse.**)
4. Battery-indicator light – The LED glows green for 10 seconds when the mouse is powered on. The LED blinks red when battery level drops below 10%.
5. Power switch – Slide the switch right to power up the mouse.
6. Connect button – See **Troubleshooting** for information about usage.

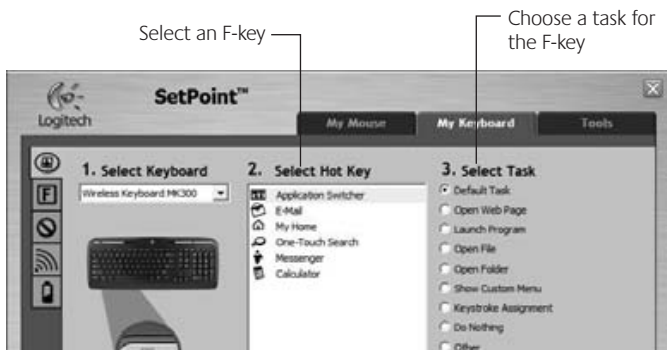


## Customizing the keyboard and mouse

1. Double-click the **Mouse and Keyboard Settings** icon on the Windows® desktop to make changes. 
2. To customize the keyboard, click the **My Keyboard** tab. For the mouse, click the **My Mouse** tab.



- For either the keyboard or mouse, a series of tabs is shown on the left.
- Choose a tab, such as the keyboard **F-key Settings**. A picture of the keyboard is displayed showing F-keys (list 2) to which tasks can be assigned (list 3).
- In the **2. Select F-key** list, highlight the F-key to be reassigned a task.
- In the **3. Select Task** list, highlight the new task.
- When you are done, click **OK** to save the new F-key assignments.

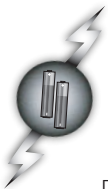


### Keyboard F-key Settings tab



## My Mouse tab

For more information about customizing your keyboard and mouse, please refer to the help system.



## Battery management

Your keyboard has up to 15 months of battery life, and your mouse has up to 6 months. (Note that the mouse can work with *only one* battery.)

### Battery sleep mode

Did you know that both your keyboard and mouse go into sleep mode after you stop using them for a few minutes? This feature helps limit battery usage. Both devices are up and running immediately once you begin using them again.

### How to check the battery level for the keyboard (software required)

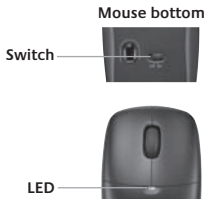
Press the **Battery Status Check** hotkey.



The SetPoint Software Keyboard Battery tab pops up. It shows the current battery level of the keyboard.

### How to check the battery level for the mouse

- **Option 1:** Turn the mouse off, and then on using the **On/Off** slider switch on the bottom of the mouse. Look at the battery LED on the top case. If the LED glows green for 10 seconds, the batteries are good. If the LED blinks red, the battery level has dropped to 10%. (You still have a few days of battery usage left.)
- **Option 2:** Launch the SetPoint Software, and click the **Mouse Battery** tab to see the current battery level of the mouse.





## Troubleshooting

### Keyboard and mouse are not working



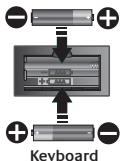
**Check the cable connection.** Try changing USB ports.



**Move closer?** Try moving the keyboard or mouse closer to the receiver.



**Relocate the receiver.** Place the receiver away from electrical devices and avoid metallic surfaces.



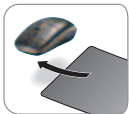
**Check battery installation.** Also check the battery power of each device. (See **Battery management** for more information.)



Mouse bottom

**Is the mouse turned on?** On the mouse bottom, move the power slider switch **right** to turn on the mouse. The Battery LED on the mouse top case should light green for 10 seconds. (See **Battery management** for more information.)

## Troubleshooting



### Are you experiencing slow or jerky cursor movement?

Try the mouse on a different surface (e.g., deep, dark surfaces may affect how the cursor moves on the computer screen).

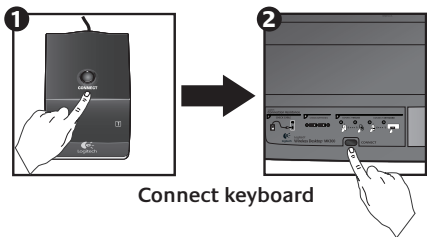
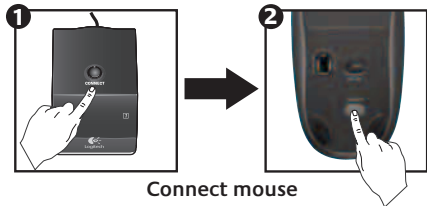


### Establish a connection:

1. Press the **Connect** button on the receiver.
2. **QUICKLY** press the **Connect** button (half second) under each device. The mouse LED (top case) should blink.

*For additional help, refer to the Customer Support telephone numbers on page 179.*

*Also visit [www.logitech.com/comfort](http://www.logitech.com/comfort) for more information about using your product, and for ergonomics.*





[www.logitech.com/support](http://www.logitech.com/support)



België / Belgique Dutch: +32-(0)2 200 64 44;  
French: +32-(0)2 200 64 40

Česká Republika +420 239 000 335

Danmark +45-38 32 31 20

Deutschland +49-(0)69-51 709 427

España +34 -91-275 45 88

France +33-(0)1-57 32 32 71

Ireland +353-(0)1 524 50 80

Italia +39-02-91 48 30 31

Magyarország +36-177-74 853

Nederland +31-(0)-20-200 84 33

Norge +47-(0)24 159 579

Österreich +43-(0)1 206 091 026

Polska 00800 441 17 19

Portugal +351-21-415 90 16

Russija +7(495) 641 34 60

Schweiz / Suisse D +41-(0)22 761 40 12  
Svizzera F +41-(0)22 761 40 16  
I +41-(0)22 761 40 20  
E +41 (0)22 761 40 25

South Africa 0800 981 089

Suomi +358-(0)9 725 191 08

Sverige +46-(0)8-501 632 83

Türkiye 00800 44 882 5862

United Arab Emirates 8000 441-4294

United Kingdom +44-(0)203-024-81 59

European, Mid. East., & African Hq. Romanel s/Morges, Switzerland English: +41-(0)22 761 40 25  
Fax: +41-(0)21 863 54 02

Eastern Europe English: 41-(0)22 761 40 25



**[www.logitech.com](http://www.logitech.com)**

© 2008 Logitech. All rights reserved. Logitech, the Logitech logo, and other Logitech marks are owned by Logitech and may be registered. All other trademarks are the property of their respective owners. Logitech assumes no responsibility for any errors that may appear in this manual. Information contained herein is subject to change without notice.

**620-001235.002**

# FCC Notices

This device complies with Part 15 of the FCC Rules. Operation is subject to the following two conditions: (1) this device may not cause harmful interference, and (2) this device must accept any interference received, including interference that may cause undesired operation.

CAUTION: Change or modification not expressly approved by the party responsible for compliance could void the user's authority to operate this equipment.

This equipment has been tested and found to comply with the limits for a Class B digital device, pursuant to Part 15 of the FCC Rules. These limits are designed to provide reasonable protection against harmful interference in a residential installation. This equipment generates, uses and can radiate radio frequency energy and, if not installed and used in accordance with the instructions, may cause harmful interference to radio communications. However, there is no guarantee that interference will not occur in a particular installation. If this equipment does cause harmful interference to radio or television reception, which can be determined by turning the equipment off and on, the user is encouraged to try to correct the interference by one or more of the following measures:

- Reorient or relocate the receiving antenna.
- Increase the separation between the equipment and receiver.
- Connect the equipment into an outlet on a circuit different from that to which the receiver is connected.
- Consult the dealer or an experienced radio/TV technician for help.

CAUTION:

Any changes or modifications not expressly approved by the grantee of this device could void the user's authority to operate the equipment.

RF exposure warning:

The equipment complies with FCC RF exposure limits set forth for an uncontrolled environment. The equipment must not be co-located or operating in conjunction with any other antenna or transmitter.

This equipment also should be installed and operated with minimum distance 20cm between the radiator & your body.