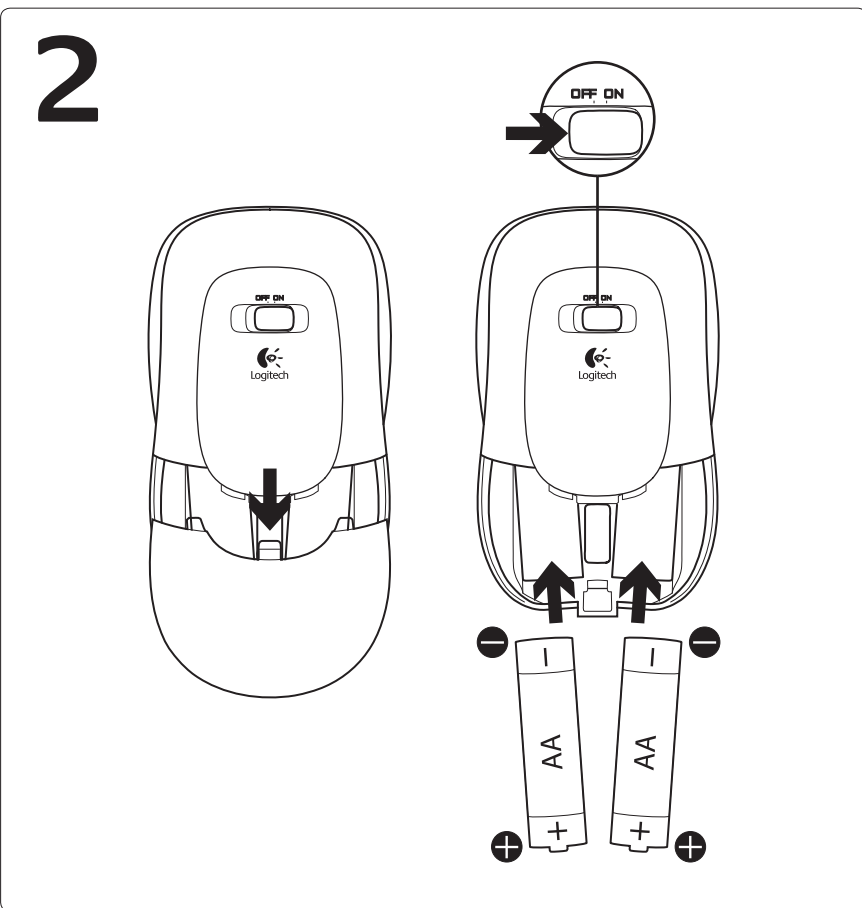
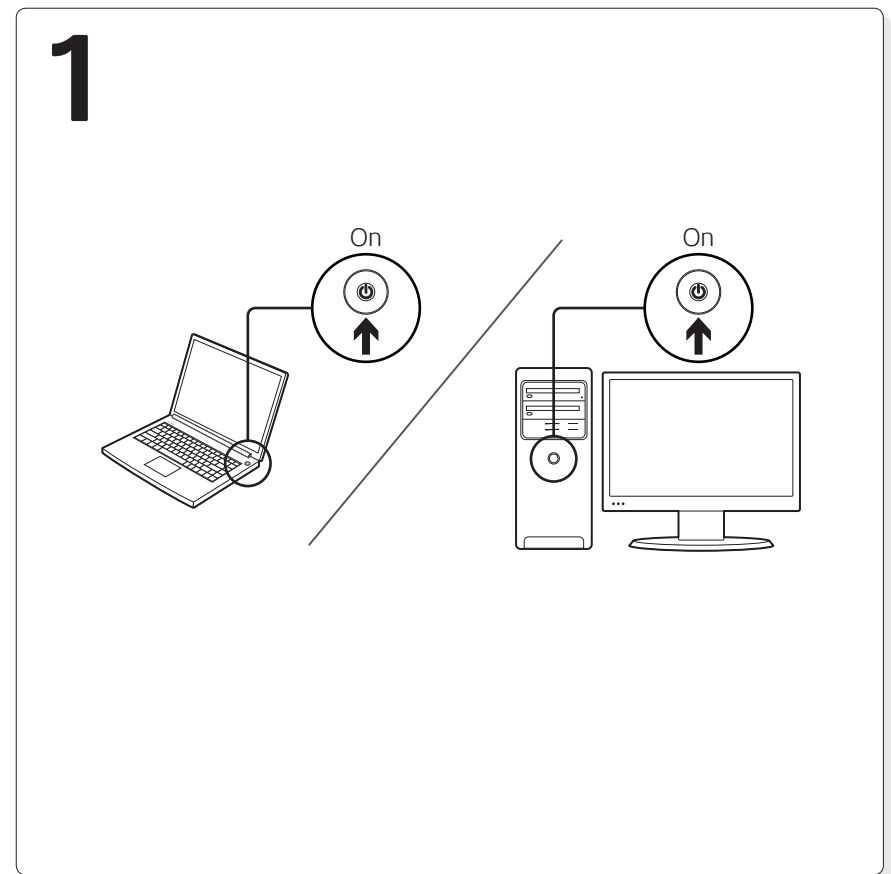


M/N:M-R0018



3

English
 Insert the Unifying receiver into a laptop USB port.
Mac® OS X Users: When plugging in the Unifying receiver, the Keyboard Assistant dialog box may appear. You can just close this window.

Español
 Insert the Unifying receiver into a laptop USB port.
Mac® OS X Users: When plugging in the Unifying receiver, the Keyboard Assistant dialog box may appear. You can just close this window.

Français
 Insert the Unifying receiver into a laptop USB port.
Mac® OS X Users: When plugging in the Unifying receiver, the Keyboard Assistant dialog box may appear. You can just close this window.

Português
 Insert the Unifying receiver into a laptop USB port.
Mac® OS X Users: When plugging in the Unifying receiver, the Keyboard Assistant dialog box may appear. You can just close this window.

www.logitech.com/downloads

English
 Congratulations! You are now ready to use your mouse.
Advanced features. Software is optional for this mouse! Download the free mouse software (Logitech® Setpoint™ for Windows® or Logitech Control Center for Macintosh®) at www.logitech.com/downloads to customize the mouse buttons and to enable side-to-side scrolling and middle button features

Español
 Congratulations! You are now ready to use your mouse.
Advanced features. Software is optional for this mouse! Download the free mouse software (Logitech® Setpoint™ for Windows® or Logitech Control Center for Macintosh®) at www.logitech.com/downloads to customize the mouse buttons and to enable side-to-side scrolling and middle button features

Français
 Congratulations! You are now ready to use your mouse.
Advanced features. Software is optional for this mouse! Download the free mouse software (Logitech® Setpoint™ for Windows® or Logitech Control Center for Macintosh®) at www.logitech.com/downloads to customize the mouse buttons and to enable side-to-side scrolling and middle button features

Português
 Congratulations! You are now ready to use your mouse.
Advanced features. Software is optional for this mouse! Download the free mouse software (Logitech® Setpoint™ for Windows® or Logitech Control Center for Macintosh®) at www.logitech.com/downloads to customize the mouse buttons and to enable side-to-side scrolling and middle button features

English
 Features

1. Scroll wheel. Press to shift between hyper-fast (free-spinning) and precision (click-to-click) scrolling.
2. Internet back/forward. Tilt the scroll wheel right to move forward one page. Tilt the scroll wheel left to move back one page.*
3. Middle button. The function of this button depends on your operating system and the application being used. For example, if you are browsing the Internet in Windows and click on a link using the Middle Button, typically the link opens in a new tab.
4. Battery indicator light. Turns red when a couple of weeks of battery life remain.
5. On/off switch. Turns the mouse on and off.
6. Unifying receiver storage. When the mouse is not in use, you can store the Unifying receiver inside the mouse.

*On a Mac the Internet back/forward function is not supported. You can assign Dashboard, Expose, or Spaces to the scroll wheel tilt feature from within System Preferences.

Español
 Features

1. Scroll wheel. Press to shift between hyper-fast (free-spinning) and precision (click-to-click) scrolling.
2. Internet back/forward. Tilt the scroll wheel right to move forward one page. Tilt the scroll wheel left to move back one page.*
3. Middle button. The function of this button depends on your operating system and the application being used. For example, if you are browsing the Internet in Windows and click on a link using the Middle Button, typically the link opens in a new tab.
4. Battery indicator light. Turns red when a couple of weeks of battery life remain.
5. On/off switch. Turns the mouse on and off.
6. Unifying receiver storage. When the mouse is not in use, you can store the Unifying receiver inside the mouse.

*On a Mac the Internet back/forward function is not supported. You can assign Dashboard, Expose, or Spaces to the scroll wheel tilt feature from within System Preferences.

Français
 Features

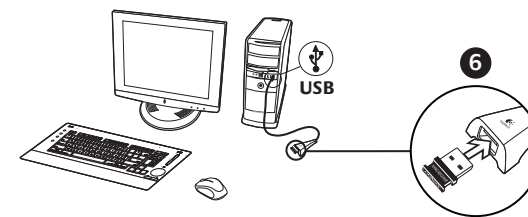
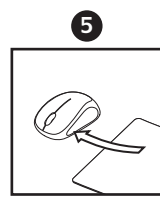
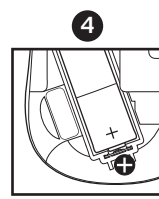
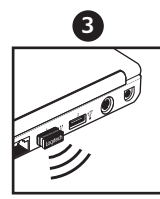
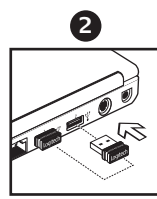
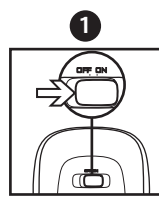
1. Scroll wheel. Press to shift between hyper-fast (free-spinning) and precision (click-to-click) scrolling.
2. Internet back/forward. Tilt the scroll wheel right to move forward one page. Tilt the scroll wheel left to move back one page.*
3. Middle button. The function of this button depends on your operating system and the application being used. For example, if you are browsing the Internet in Windows and click on a link using the Middle Button, typically the link opens in a new tab.
4. Battery indicator light. Turns red when a couple of weeks of battery life remain.
5. On/off switch. Turns the mouse on and off.
6. Unifying receiver storage. When the mouse is not in use, you can store the Unifying receiver inside the mouse.

*On a Mac the Internet back/forward function is not supported. You can assign Dashboard, Expose, or Spaces to the scroll wheel tilt feature from within System Preferences.

Português
 Features

1. Scroll wheel. Press to shift between hyper-fast (free-spinning) and precision (click-to-click) scrolling.
2. Internet back/forward. Tilt the scroll wheel right to move forward one page. Tilt the scroll wheel left to move back one page.*
3. Middle button. The function of this button depends on your operating system and the application being used. For example, if you are browsing the Internet in Windows and click on a link using the Middle Button, typically the link opens in a new tab.
4. Battery indicator light. Turns red when a couple of weeks of battery life remain.
5. On/off switch. Turns the mouse on and off.
6. Unifying receiver storage. When the mouse is not in use, you can store the Unifying receiver inside the mouse.

*On a Mac the Internet back/forward function is not supported. You can assign Dashboard, Expose, or Spaces to the scroll wheel tilt feature from within System Preferences.



English

Help with setup: Mouse is not working

1. Is the mouse powered on?
2. Is the Unifying receiver securely plugged into a computer USB port? Try changing USB ports.
3. If the Unifying receiver is plugged into a USB hub, try plugging it directly into a USB port on your computer.
4. Check the orientation of the batteries inside the mouse. To check battery power, turn the mouse **OFF** and then **ON**. If the battery indicator light glows red or does not glow at all, replace the batteries.
5. Try using the mouse on a different surface. Remove metallic objects between the mouse and the Unifying receiver.
6. Try moving the Unifying receiver to a USB port closer to the mouse. If you are using a tower PC, go to www.logitech.com/usbextender for a USB extender.
7. Try reconnecting the mouse and Unifying receiver using the Logitech Unifying software (refer to the Unifying section of this guide).

Español

Help with setup: Mouse is not working

1. Is the mouse powered on?
2. Is the Unifying receiver securely plugged into a computer USB port? Try changing USB ports.
3. If the Unifying receiver is plugged into a USB hub, try plugging it directly into a USB port on your computer.
4. Check the orientation of the batteries inside the mouse. To check battery power, turn the mouse **OFF** and then **ON**. If the battery indicator light glows red or does not glow at all, replace the batteries.
5. Try using the mouse on a different surface. Remove metallic objects between the mouse and the Unifying receiver.
6. Try moving the Unifying receiver to a USB port closer to the mouse. If you are using a tower PC, go to www.logitech.com/usbextender for a USB extender.
7. Try reconnecting the mouse and Unifying receiver using the Logitech Unifying software (refer to the Unifying section of this guide).

Français

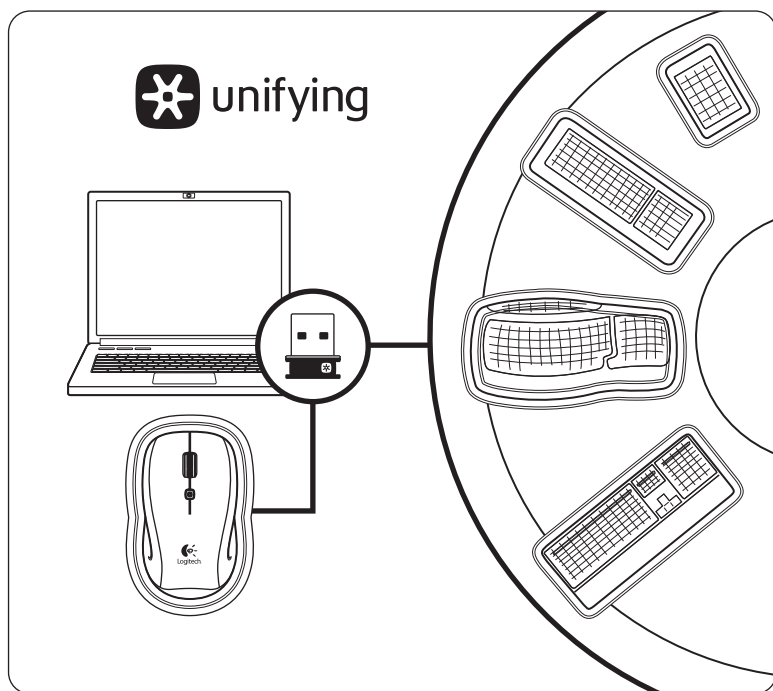
Help with setup: Mouse is not working

1. Is the mouse powered on?
2. Is the Unifying receiver securely plugged into a computer USB port? Try changing USB ports.
3. If the Unifying receiver is plugged into a USB hub, try plugging it directly into a USB port on your computer.
4. Check the orientation of the batteries inside the mouse. To check battery power, turn the mouse **OFF** and then **ON**. If the battery indicator light glows red or does not glow at all, replace the batteries.
5. Try using the mouse on a different surface. Remove metallic objects between the mouse and the Unifying receiver.
6. Try moving the Unifying receiver to a USB port closer to the mouse. If you are using a tower PC, go to www.logitech.com/usbextender for a USB extender.
7. Try reconnecting the mouse and Unifying receiver using the Logitech Unifying software (refer to the Unifying section of this guide).

Português

Help with setup: Mouse is not working

1. Is the mouse powered on?
2. Is the Unifying receiver securely plugged into a computer USB port? Try changing USB ports.
3. If the Unifying receiver is plugged into a USB hub, try plugging it directly into a USB port on your computer.
4. Check the orientation of the batteries inside the mouse. To check battery power, turn the mouse **OFF** and then **ON**. If the battery indicator light glows red or does not glow at all, replace the batteries.
5. Try using the mouse on a different surface. Remove metallic objects between the mouse and the Unifying receiver.
6. Try moving the Unifying receiver to a USB port closer to the mouse. If you are using a tower PC, go to www.logitech.com/usbextender for a USB extender.
7. Try reconnecting the mouse and Unifying receiver using the Logitech Unifying software (refer to the Unifying section of this guide).



English

Plug it. Forget it. Add to it.

You've got a Logitech® Unifying receiver. Now add a compatible wireless keyboard that uses the same receiver as your mouse. It's easy. Just start the Logitech® Unifying software* and follow the onscreen instructions.

For more information and to download the software, visit www.logitech.com/unifying

* PC: Go to Start / All Programs / Logitech / Unifying / Logitech Unifying Software

* Mac: Go to Applications / Utilities / Logitech Unifying Software

Español

Plug it. Forget it. Add to it.

You've got a Logitech® Unifying receiver. Now add a compatible wireless keyboard that uses the same receiver as your mouse. It's easy. Just start the Logitech® Unifying software* and follow the onscreen instructions.

For more information and to download the software, visit www.logitech.com/unifying

* PC: Go to Start / All Programs / Logitech / Unifying / Logitech Unifying Software

* Mac: Go to Applications / Utilities / Logitech Unifying Software

Français

Plug it. Forget it. Add to it.

You've got a Logitech® Unifying receiver. Now add a compatible wireless keyboard that uses the same receiver as your mouse. It's easy. Just start the Logitech® Unifying software* and follow the onscreen instructions.

For more information and to download the software, visit www.logitech.com/unifying

* PC: Go to Start / All Programs / Logitech / Unifying / Logitech Unifying Software

* Mac: Go to Applications / Utilities / Logitech Unifying Software

Português

Plug it. Forget it. Add to it.

You've got a Logitech® Unifying receiver. Now add a compatible wireless keyboard that uses the same receiver as your mouse. It's easy. Just start the Logitech® Unifying software* and follow the onscreen instructions.

For more information and to download the software, visit www.logitech.com/unifying

* PC: Go to Start / All Programs / Logitech / Unifying / Logitech Unifying Software

* Mac: Go to Applications / Utilities / Logitech Unifying Software



www.logitech.com



www.logitech.com/support

United States	+1 646-454-3200
Argentina	+00800-555-3284
Canada	+1 866-934-5644
Brasil	+0 800-891-4173
Chile	1230 020 5484
Latin America	+1 800-578-9619
Mexico	001 800 578 9619

**What do you think?
¿Cuál es su opinión?
Qu'en pensez-vous?
O que você acha?**

Please take a minute to tell us. Thank you for purchasing our product.
Nos gustaría conocerla, si puede dedicarnos un minuto.
Le agradecemos la adquisición de nuestro producto.
Prenez quelques minutes pour nous faire part de vos commentaires.
Vous venez d'acheter ce produit et nous vous en remercions.
Reserve um minuto para nos dizer. Obrigado por adquirir nosso produto.

www.logitech.com/ithink

© 2010 Logitech. All rights reserved. Logitech, the Logitech logo, and other Logitech marks are owned by Logitech and may be registered. All other trademarks are the property of their respective owners. Logitech assumes no responsibility for any errors that may appear in this manual. Information contained herein is subject to change without notice.

© 2010 Logitech. Tous droits réservés. Logitech, le logo Logitech et les autres marques Logitech sont la propriété exclusive de Logitech et sont susceptibles d'être des marques déposées. Toutes les autres marques sont la propriété exclusive de leurs détenteurs respectifs. Logitech décline toute responsabilité en cas d'erreurs dans ce manuel. Les informations énoncées dans le présent document peuvent faire l'objet de modifications sans avis préalable.

620-002592.002



M/N: C-U0003
Rating: 5V ±, 100mA
FCC ID: JNZCU0003
IC: 4418A-CU0003
MADE IN CHINA

M/N: C-U0007
Rating: 5V ±, 100mA
FCC ID: JNZCU0007
IC: 4418A-CU0007
MADE IN CHINA

Federal Communication Commission Interference Statement

This equipment has been tested and found to comply with the limits for a Class B digital device, pursuant to Part 15 of the FCC Rules. These limits are designed to provide reasonable protection against harmful interference in a residential installation. This equipment generates, uses and can radiate radio frequency energy and, if not installed and used in accordance with the instructions, may cause harmful interference to radio communications. However, there is no guarantee that interference will not occur in a particular installation. If this equipment does cause harmful interference to radio or television reception, which can be determined by turning the equipment off and on, the user is encouraged to try to correct the interference by one of the following measures:

- Reorient or relocate the receiving antenna.
- Increase the separation between the equipment and receiver.
- Connect the equipment into an outlet on a circuit different from that to which the receiver is connected.
- Consult the dealer or an experienced radio/TV technician for help.

FCC Caution: Any changes or modifications not expressly approved by the party responsible for compliance could void the user's authority to operate this equipment.

This device complies with Part 15 of the FCC Rules. Operation is subject to the following two conditions: (1) This device may not cause harmful interference, and (2) this device must accept any interference received, including interference that may cause undesired operation

Industry Canada Statement

This device complies with RSS-210 of the Industry Canada Rules. Operation is subject to the following two conditions:

- 1) this device may not cause interference and
- 2) this device must accept any interference, including interference that may cause undesired operation of the device

台灣使用注意事項:

經型式認證合格之低功率射頻電機，非經許可，公司、商號或使用者均不得擅自變更頻率、加大功率或變更原設計之特性及功能。

低功率射頻電機之使用不得影響飛航安全及干擾合法通信；經發現有干擾現象時，應立即停用，並改善至無干擾時方得繼續使用。前項合法通信，指依電信法規定作業之無線電通信。低功率射頻電機須忍受合法通信或工業、科學及醫療用電波輻射性電機設備之干擾。