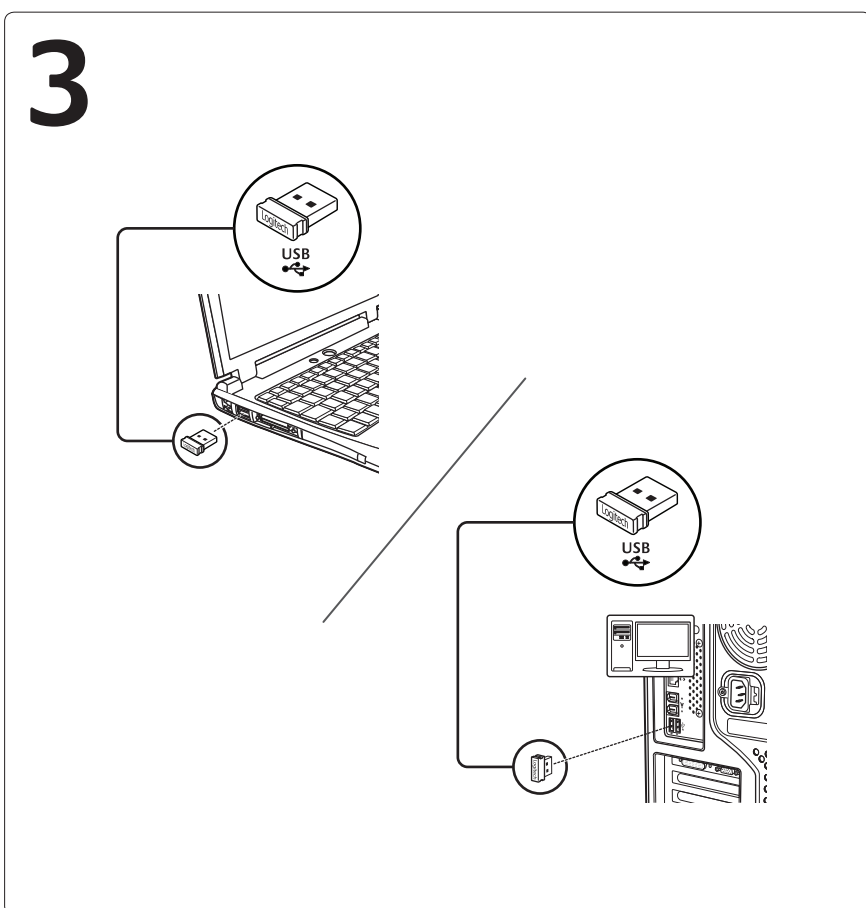
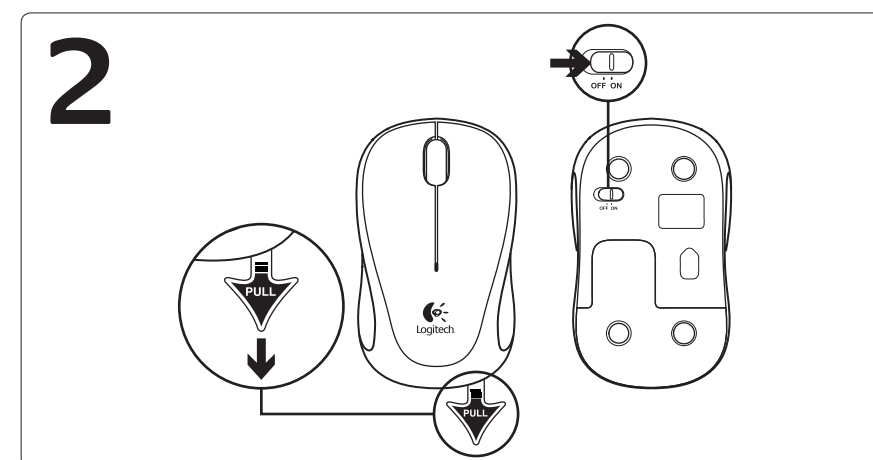
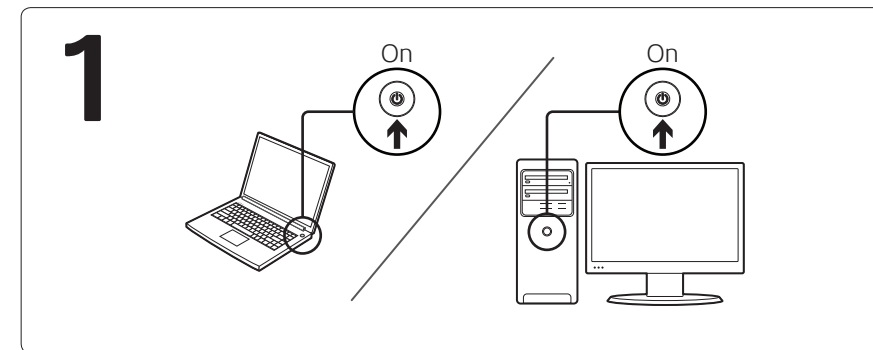


Getting started with  
*Première utilisation*  
 Logitech® Wireless Mouse M315



|   |   |  |   |
|---|---|--|---|
| <p><b>English</b><br/>         Features</p> <ol style="list-style-type: none"> <li>1. Left and right mouse buttons</li> <li>2. Battery LED flashes red when battery power is low</li> <li>3. Scroll wheel</li> <li>4. Press the wheel down for middle button (function can vary by software application)</li> <li>5. On/Off slider switch</li> <li>6. Battery door release</li> <li>7. USB Nano-receiver storage</li> </ol> | <p><b>Español</b><br/>         Features</p> <ol style="list-style-type: none"> <li>1. Left and right mouse buttons</li> <li>2. Battery LED flashes red when battery power is low</li> <li>3. Scroll wheel</li> <li>4. Press the wheel down for middle button (function can vary by software application)</li> <li>5. On/Off slider switch</li> <li>6. Battery door release</li> <li>7. USB Nano-receiver storage</li> </ol> | <p><b>Français</b><br/>         Features</p> <ol style="list-style-type: none"> <li>1. Left and right mouse buttons</li> <li>2. Battery LED flashes red when battery power is low</li> <li>3. Scroll wheel</li> <li>4. Press the wheel down for middle button (function can vary by software application)</li> <li>5. On/Off slider switch</li> <li>6. Battery door release</li> <li>7. USB Nano-receiver storage</li> </ol> | <p><b>Português</b><br/>         Features</p> <ol style="list-style-type: none"> <li>1. Left and right mouse buttons</li> <li>2. Battery LED flashes red when battery power is low</li> <li>3. Scroll wheel</li> <li>4. Press the wheel down for middle button (function can vary by software application)</li> <li>5. On/Off slider switch</li> <li>6. Battery door release</li> <li>7. USB Nano-receiver storage</li> </ol> |
|---|---|--|---|

|  |  |   |  |
|--|--|---|--|
| <p><b>English</b><br/>         Help with setup: Mouse is not working</p> <ol style="list-style-type: none"> <li>1. Is the mouse powered on?</li> <li>2. Is the Nano receiver securely plugged into a USB port? Try changing USB ports.</li> <li>3. If the Nano receiver is plugged into a USB hub, try plugging it directly into a USB port on your computer.</li> <li>4. Check the orientation of the battery inside the mouse.</li> <li>5. Try a different surface. Remove metallic objects between the mouse and the Nano receiver.</li> <li>6. Try moving the Nano receiver to a USB port closer to the mouse. If you are using a tower PC, go to <a href="http://www.logitech.com/usbextender">www.logitech.com/usbextender</a> for a USB extender.</li> <li>7. For Windows® operating systems, reconnect the mouse with the Nano receiver by launching the Connect utility from <a href="http://www.logitech.com/connect_utility">www.logitech.com/connect_utility</a>.</li> </ol> | <p><b>Español</b><br/>         Help with setup: Mouse is not working</p> <ol style="list-style-type: none"> <li>1. Is the mouse powered on?</li> <li>2. Is the Nano receiver securely plugged into a USB port? Try changing USB ports.</li> <li>3. If the Nano receiver is plugged into a USB hub, try plugging it directly into a USB port on your computer.</li> <li>4. Check the orientation of the battery inside the mouse.</li> <li>5. Try a different surface. Remove metallic objects between the mouse and the Nano receiver.</li> <li>6. Try moving the Nano receiver to a USB port closer to the mouse. If you are using a tower PC, go to <a href="http://www.logitech.com/usbextender">www.logitech.com/usbextender</a> for a USB extender.</li> <li>7. For Windows® operating systems, reconnect the mouse with the Nano receiver by launching the Connect utility from <a href="http://www.logitech.com/connect_utility">www.logitech.com/connect_utility</a>.</li> </ol> | <p><b>Français</b><br/>         Help with setup: Mouse is not working</p> <ol style="list-style-type: none"> <li>1. Is the mouse powered on?</li> <li>2. Is the Nano receiver securely plugged into a USB port? Try changing USB ports.</li> <li>3. If the Nano receiver is plugged into a USB hub, try plugging it directly into a USB port on your computer.</li> <li>4. Check the orientation of the battery inside the mouse.</li> <li>5. Try a different surface. Remove metallic objects between the mouse and the Nano receiver.</li> <li>6. Try moving the Nano receiver to a USB port closer to the mouse. If you are using a tower PC, go to <a href="http://www.logitech.com/usbextender">www.logitech.com/usbextender</a> for a USB extender.</li> <li>7. For Windows® operating systems, reconnect the mouse with the Nano receiver by launching the Connect utility from <a href="http://www.logitech.com/connect_utility">www.logitech.com/connect_utility</a>.</li> </ol> | <p><b>Português</b><br/>         Help with setup: Mouse is not working</p> <ol style="list-style-type: none"> <li>1. Is the mouse powered on?</li> <li>2. Is the Nano receiver securely plugged into a USB port? Try changing USB ports.</li> <li>3. If the Nano receiver is plugged into a USB hub, try plugging it directly into a USB port on your computer.</li> <li>4. Check the orientation of the battery inside the mouse.</li> <li>5. Try a different surface. Remove metallic objects between the mouse and the Nano receiver.</li> <li>6. Try moving the Nano receiver to a USB port closer to the mouse. If you are using a tower PC, go to <a href="http://www.logitech.com/usbextender">www.logitech.com/usbextender</a> for a USB extender.</li> <li>7. For Windows® operating systems, reconnect the mouse with the Nano receiver by launching the Connect utility from <a href="http://www.logitech.com/connect_utility">www.logitech.com/connect_utility</a>.</li> </ol> |
|--|--|---|--|

