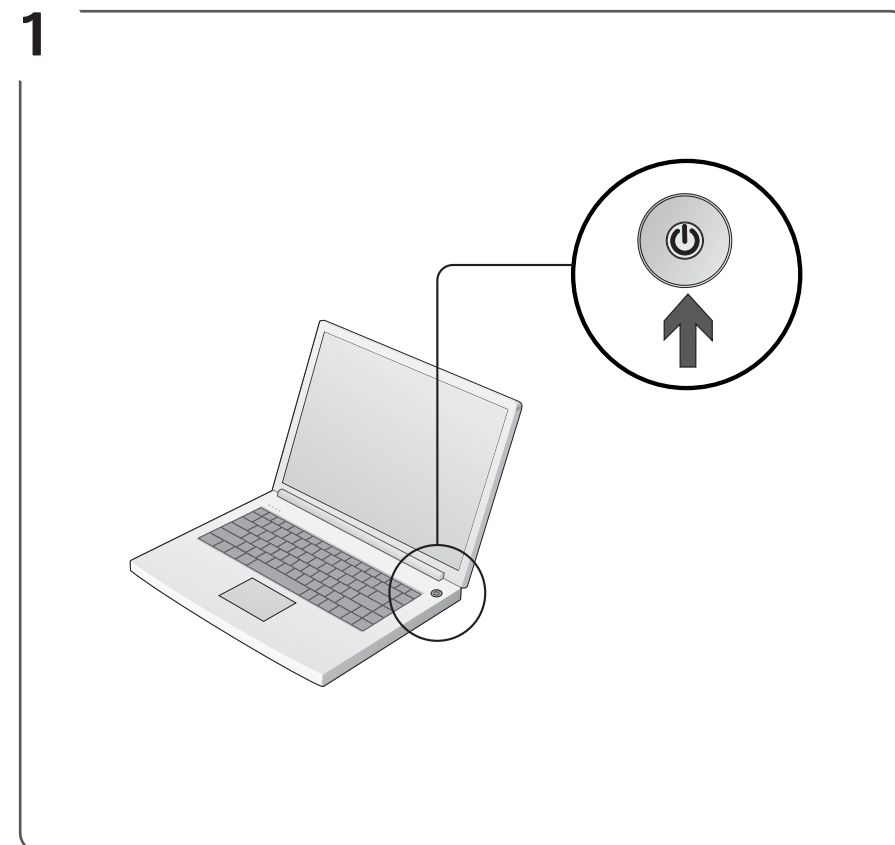




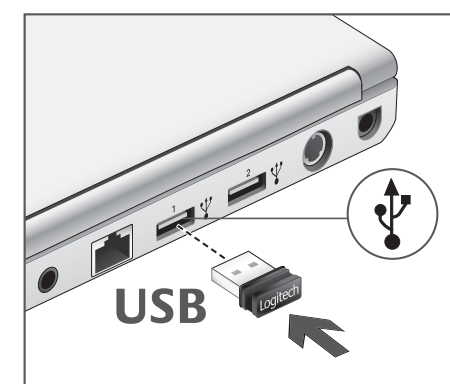
Logitech® Wireless Mouse M215



2



3



English

Congratulations! You are now ready to use your mouse.

繁體中文

恭喜！現在，您可以立即開始使用滑鼠。

简体中文

恭喜您！您现在即可开始使用鼠标。

한국어

축하합니다! 이제 마우스를 사용할 준비가 되었습니다.



English

Features

- 1 Left and right mouse buttons
- 2 Battery LED flashes red when battery power is low
- 3 Scroll wheel
- 4 Press the wheel down for middle button (function can vary by software application)
- 5 On/Off slider switch
- 6 Battery door release button
- 7 USB Nano-receiver storage



繁體中文

功能

- 1 滑鼠左鍵和右鍵
- 2 電池 LED，電池電量較低時會閃爍紅燈
- 3 滾輪
- 4 按下滾輪以執行滑鼠中鍵功能（功能會因軟體應用程式而有所不同）
- 5 電源滑動開關
- 6 電池蓋釋放按鈕
- 7 USB 超小型接收器收納處



简体中文

功能部件

- 1 左、右鼠标按钮
- 2 电池 LED 指示灯，当电池电量较低时呈红色闪烁
- 3 滚轮
- 4 向下按滚轮作为中键使用，功能视具体软件应用程序而定
- 5 开/关滑动开关
- 6 电池盖释放按钮
- 7 USB Nano 接收器存放空间

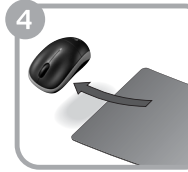
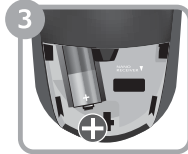
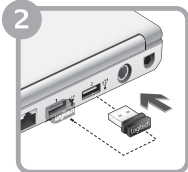


한국어

기능

- 1 왼쪽/오른쪽 마우스 버튼
- 2 배터리 전원이 부족하면 배터리 LED가 적색으로 깜빡임
- 3 스크롤 휠
- 4 중간 버튼(기능은 소프트웨어 응용프로그램에 따라 다를 수 있음)으로 사용하려면 휠을 아래로 누름
- 5 켜기/끄기 슬라이더 스위치
- 6 배터리 덮개 분리 버튼
- 7 USB Nano 수신기 보관





한국어

문제가 있습니까?

- 전원이 켜져 있습니까?
- Nano 수신기를 확인하고 포트를 변경하십시오.
- 배터리를 확인하십시오.
- 다른 표면에서 사용해 보십시오. 마우스와 Nano 수신기 사이의 금속 물질을 제거하십시오.
- Nano 수신기가 USB 허브에 연결된 경우에는 직접 USB 포트에 연결해 보십시오.
- 마우스와 USB 수신기의 연결 재설정: www.logitech.com/connect_utility에서 연결 유틸리티(Connect Utility)를 다운로드 받아 실행하십시오. (Windows 사용자 전용)
- Nano 수신기를 마우스와 가까운 USB 포트에 연결하거나 **www.logitech.com/usbextender**에서 Nano 수신기를 마우스에 가까이 배치할 수 있도록 하는 USB 연장 스탠드를 찾아 보십시오.

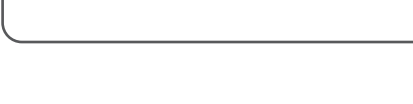
주의: 질식 위험. 삼킬 경우 유해하거나 치명적임. 패키지에 있는 작은 부품이 들어 있으므로 6세 이하의 어린이에게는 위험합니다.

English

Having problems?

- Is the power on?
- Check the Nano receiver; change ports.
- Check the battery.
- Try a different surface. Remove metallic objects between mouse and the Nano receiver.
- If the Nano receiver is plugged into a USB hub, try plugging it directly into a USB port on your computer.
- Repair connection between mouse and USB receiver: launch the Connect utility from www.logitech.com/connect_utility. (For Windows users only)
- Move the Nano receiver to a USB port closer to the mouse, or go to **www.logitech.com/usbextender** for a USB extension stand that will allow the Nano receiver to be placed closer to the mouse.

CAUTION: CHOKING HAZARD! HARMFUL OR FATAL IF SWALLOWED. Package contains small parts. Not for children under 6 years.



English

Important ergonomic information

Long periods of repetitive motion using an improperly set-up workspace, incorrect body position, and poor work habits may be associated with physical discomfort and injury to nerves, tendons, and muscles. If you feel pain, numbness, weakness, swelling, burning, cramping, or stiffness in your hands, wrists, arms, shoulders, neck, or back, consult a qualified health professional. For more information, please read the Comfort Guidelines located on the Logitech® web site at **http://www.logitech.com/comfort**, or on the Logitech® Software CD.

Class 1 LED products

The product contains Class 1 LED, which complies with IEC 60825-1:1993+A1+A2. Operating temperature between 5°C (41°F) to 40°C (104°F).

Additional compliance information

To obtain additional information about Class 1 LEDs or other compliance-related matters, go to http://www.logitech.com/compliance, or call Logitech customer support. (Customer support telephone numbers are listed in the product documentation.)

Battery warning!

Risk of explosion or personal injury if batteries are replaced by incorrect type, mutilated, or exposed to conducting materials, liquid, fire, or heat (above 54° C or 130° F). Do not use or recharge damaged rechargeable batteries. Do not mix battery types. Dispose of spent or damaged batteries according to manufacturer instructions and local laws.

UL Statement: Your product is UL approved. Use only with UL listed ITE computers.

Logitech hardware product limited warranty
Logitech warrants to the original purchaser that your Logitech hardware product shall be free from defects in material and workmanship for 3 years from the date of purchase. Except where prohibited by applicable law, this warranty is nontransferable and is limited to the original purchaser. This warranty gives you specific legal rights, and you may also have other rights that vary under local laws.

Logitech's entire liability and your exclusive remedy for any breach of warranty shall be, at Logitech's option, (1) to repair or replace the hardware, provided that the hardware is returned to the point of purchase or such other place as Logitech may direct with a copy of the sales receipt and / or local warranty card. Shipping and handling charges may apply, except where prohibited by applicable law. Logitech may, at its option, use new or refurbished or used parts in good working condition to repair or replace any hardware product. Any replacement hardware product will be warranted for at least the remainder of the original warranty period.

This warranty does not cover problems or damage resulting from (1) accident, abuse, misapplication, or any unauthorized repair, modification or disassembly; (2) improper operation or maintenance, usage not in accordance with product instructions or connection to improper voltage supply; or (3) use of consumables, such as replacement batteries, not supplied by Logitech except where such restriction is prohibited by applicable law.

How to obtain warranty support. Before submitting a warranty claim, we recommend you visit the support section at www.logitech.com/support for technical assistance. Valid warranty claims are generally processed through the point of purchase during the first 3 years after purchase; however, this period of time may vary depending on where you purchased your product – please check with Logitech or the retailer where you purchased your product for details. Warranty claims that cannot be processed through the point of purchase and any other product related questions should be addressed directly to Logitech. The addresses and customer service contact information for Logitech can be found in the documentation accompanying your product and on the web at www.logitech.com/support.

Limitation of liability. LOGITECH SHALL NOT BE LIABLE FOR ANY SPECIAL, INDIRECT, INCIDENTAL OR CONSEQUENTIAL DAMAGES WHATSOEVER, INCLUDING BUT NOT LIMITED TO LOSS OF PROFITS, REVENUE OR DATA (WHETHER DIRECT OR INDIRECT) OR COMMERCIAL LOSS FOR BREACH OF ANY EXPRESS OR IMPLIED WARRANTY ON YOUR PRODUCT UNLESS IF LOGITECH HAS BEEN ADVISED OF THE POSSIBILITY OF SUCH DAMAGES.

Duration of implied warranties. EXCEPT TO THE EXTENT PROHIBITED BY APPLICABLE LAW, ANY IMPLIED WARRANTY OR CONDITION OF MERCHANTABILITY OR FITNESS FOR A PARTICULAR PURPOSE OF THIS HARDWARE PRODUCT IS LIMITED IN DURATION TO THE DURATION OF THE APPLICABLE LIMITED WARRANTY PERIOD FOR YOUR PRODUCT.

Additional Rights. Some states do not allow limitations on how long an implied warranty lasts, or allow the exclusion or limitation of incidental or consequential damages, so the above limitations or exclusion may not apply to you. This warranty gives you specific legal rights, and you may also have other rights that vary from State to State or by country or other jurisdiction.

National Statutory Rights. Consumers have legal rights under applicable national legislation governing the sale of consumer goods. Such rights are not affected by the warranties in this limited Warranty.

No Other Warranties. No Logitech dealer, agent, or employee is authorized to make any modification, extension, or addition to this warranty.

繁體中文

重要人體工學資訊

在不適當的工作環境中、身體姿勢不正確以及工作習慣不佳而長期從事重複性的動作，可能會導致身體不適並造成神經、肌腱或肌肉的傷害。如果您感覺手部、手腕、手臂、肩膀、頸部或背部有任何疼痛、麻痺、虛弱、腫脹、灼熱、抽動或痲痺，請向專業的健康諮詢人員就診。如需更多资讯，請閱讀羅技® 網站 **http://www.logitech.com/comfort** 上或羅技® 軟體光碟中的「舒適指南」。

Class 1 LED 產品

本產品包含遵循 IEC 60825-1:1993+A1+A2 的 Class 1 LED 1。操作溫度為 5°C (41°F) 到 40°C (104°F)。

其他符合性資訊

若要獲得更多有關 Class 1 LED 或其他符合性相關事宜的資訊，請造訪 **http://www.logitech.com/compliance** 或致電羅技客戶支援。(客戶支援電話號碼已列於產品說明文件中。)

Logitech's entire liability and your exclusive remedy for any breach of warranty shall be, at Logitech's option, (1) to repair or replace the hardware, provided that the hardware is returned to the point of purchase or such other place as Logitech may direct with a copy of the sales receipt and / or local warranty card. Shipping and handling charges may apply, except where prohibited by applicable law. Logitech may, at its option, use new or refurbished or used parts in good working condition to repair or replace any hardware product. Any replacement hardware product will be warranted for at least the remainder of the original warranty period.

This warranty does not cover problems or damage resulting from (1) accident, abuse, misapplication, or any unauthorized repair, modification or disassembly; (2) improper operation or maintenance, usage not in accordance with product instructions or connection to improper voltage supply; or (3) use of consumables, such as replacement batteries, not supplied by Logitech except where such restriction is prohibited by applicable law.

How to obtain warranty support. Before submitting a warranty claim, we recommend you visit the support section at www.logitech.com/support for technical assistance. Valid warranty claims are generally processed through the point of purchase during the first 3 years after purchase; however, this period of time may vary depending on where you purchased your product – please check with Logitech or the retailer where you purchased your product for details. Warranty claims that cannot be processed through the point of purchase and any other product related questions should be addressed directly to Logitech. The addresses and customer service contact information for Logitech can be found in the documentation accompanying your product and on the web at www.logitech.com/support.

羅技公司對費用用戶所應負之責任總額以及費用用戶所享有之全部補償總額，應由羅技公司決定修復或更換硬體，只要硬體已通過選購或羅技指定的其他地點，並且附上收據影本和當地保單卡。除非適用法律禁止，否則運費及處理費用將由費用用戶負擔。羅技將自行決定是否使用新的或翻新或情況良好的二手零件，以維修或更換同硬體產品。經更換之硬體其擔保期限為原擔保期限之剩餘期間。

本保固不包含因以下情況造成的問題或損害：(1) 意外、濫用、誤用或任何未經授權的維修、修改或拆卸；(2) 不適當的操作或維修、不符合產品指示或與不適當的電腦硬體有關的使用；或 (3) 使用不是由羅技提供的消耗品（例如更換電池），但適用法律禁止的限制除外。

如何獲得保固支援。 在提出保固理賠申請之前，我們建議費用用戶先至 www.logitech.com/support 網站瀏覽支援的部份以獲得技術方面的協助。硬體保固的有效期限是自購買日期起算 3 年，通常交由產品的購買處進行處理，惟此期限很費用戶產品的購買處而可能有所不同。詳情請洽羅技或購買產品之零售商。無法自產品的購買處取得之保固，以及有關保固的任何其他問題，應該直接向羅技提出。可以從產品隨附的文檔或網站 www.logitech.com/support 上找到羅技的位址和客戶服務聯絡資訊。

責任限制。 對於因違反產品的任何明示或默示擔保而導致的特殊、間接、隨附性或衍生性損害，包括（但不限於）利潤、收益或資料損失（直接或間接）或商業損失，羅技將無負擔承擔任何責任，即使事前已將發生此損失之可能性告訴羅技，其結果亦同。

默示擔保期限。 除非適用法律禁止，否則有關此硬體產品的任何默示擔保或隱性性或適合特定用途的條件皆受制於費用用戶所適用有限保固期間的持續期間。

其他權利。 由於某些州不允許對於默示保固的持續期限做出限制，或是不允許對衍生性或附隨損害賠償進行任何排除或限制，因此上述限制或排除可能不適用於費用用戶。本保固提供費用用戶特定的法律權利，且費用用戶亦可能擁有其他國家/地區或其他居住法域令規定的情況下的擁有其他權利。

全國法律權益。 在與消費產品相關之全國法律管轄下，消費者擁有法律權益。該等權益不受本有限保固之保固條款與條件影響。

無其他保固。 羅技經銷商、代理商或員工概未獲授權可針對此保固進行任何修改、延長或增補。

简体中文

重要人体工程学信息

在不适当的工作环境下、身体姿势不正确以及工作习惯不佳而长期进行重复性的动作可能会导致身体不适并造成神经、肌腱和肌肉损伤。如果您手部、手腕、手臂、肩膀、颈部或背部有疼痛、麻木、无力、肿胀、灼热、痉挛或僵硬的感觉，请咨询合格的健康专业人士，有关详细信息，请访问罗技® 网站 **http://www.logitech.com/comfort** 上或罗技® 软件光盘中的“舒适指南”。

1 类 LED 产品

本产品包含 1 类 LED，它遵循 IEC 60825-1:1993+A1+A2。操作温度为 5°C (41°F) 到 40°C (104°F)。

有关合规性的更多信息

欲获得有关 1 类 LED 或其他合规性相关事宜的更多信息，请转至 **http://www.logitech.com/compliance** 或致电罗技客户支持。(产品文档中列出了客户支持电话号码。)

电池警告！

如果更换的电池的类型不正确、切开电池或使之暴露于导电材料、液体、火或热量（超过 54°C 或 130°F）等环境中，则可能导致爆炸或造成人身伤害。请勿使用已损坏的可充电电池或其充电。请勿混用不同类型的电池，应根据制造商说明和当地法律的要求丢弃废弃或已损坏的电池。

UL 声明: 您的产品已获 UL 批准，仅将其与 UL 列表中的 ITE 计算机一起使用。

罗技硬件产品有限质保

罗技向原始购买者保证，罗技硬件产品自购买之日起 3 年内不会出现材料和工艺方面的缺陷。除适用法律禁止的情形之外，本有限质保仅限原始购买者使用，不可转让。本有限质保不授予您特定的法律权利。您享有的其它权利依据当地法律而有所不同。

在质保期内，罗技对您负有的全部责任以及您所享有的补偿为：由罗技选择 (1) 维修或更换硬件，前提是將硬件退还至购买地点或罗技指定的其它地点，并附上销售收据副本及（或）当地的质保卡。您还应承担运输费和手续费（适用法律禁止的情形除外）。罗技可以根据您的选择，使用新部件或正常工作的改制部件来维修或更换任何硬件产品。更换之后的任何硬件产品的质保期至少为原质保期的剩余天数。

本有限质保不涵盖由于以下原因导致的问题或损坏：(1) 意外事件、误用、操作不当或未经授权的维修、改装或拆卸；(2) 操作或维护不当，使用过程中违反产品说明或连接到不适当的电压源；或者 (3) 使用并非由罗技提供的消耗品（如备用电池），但适用法律禁止此类限制的情况除外。

如何获得质保支持。 在提交质保要求之前，我们建议您访问 **www.logitech.com/support** 上的支持部分，了解技术支持方面的信息。自购买日起的三年内，有效的质保要求通常通过购买处进行处理；然而，这一时间段根据购买产品的位臵不同而可能有所差异。有关详细信息，请咨询罗技或购买产品的零售商。通过购买无法处理的质保要求或其它任何与产品相关的问题应直接提交给罗技，可以从产品随附的文档或网站 **www.logitech.com/support** 上找到罗技的地址和客户服务联系信息。

有限质保。 罗技对于任何特殊、间接、偶发或潜在性损害均不承担任何责任，包括但不限于利益损失、收入损失或数据丢失（无论是直接还是间接）或由于违反本产品的任何明示或暗示质保条款而导致的商业信息，请咨询罗技或您已知晓此类损害的可能性也是如此。

暗示质保期。 除适用法律禁止的情形之外，任何与本硬件产品有关的适销性或特定用途适用性的暗示质保条件均不得超过适用于本产品的有限质保期所规定的期限。

其它权利。 某些州不允许限制暗示担保责任的持续期限，也不允许排除或限制赔偿或相因而生的损害赔偿赔偿责任，因此以上限制或排除条款可能对您不适用，本有限质保授予您特定的法律权利。您享有的其它权利视州、国家、地区或司法辖区不同而有所不同。

国家/地区法定权利。 客户享有管辖生活消费品销售的通用国家/地区法律所规定的法律权利。此类权利不受此有限质保中的质保条款影响。

无其它质保。 任何罗技经销商、代理商或雇员均无权对本质保责任进行任何更改、延伸或增补。

한국어

중요한 인쇄공정 정보

부적절한 설치 공간, 부적절한 자세 및 바람직하지 못한 작업 습관 등을 사용한 반복적인 움직임이 장기 사용할 경우 육체적 불편함과 신경, 팔을 및 손목에 대한 부담이 초래될 수 있습니다. 손, 손목, 팔, 어깨, 목 또는 어깨 통증, 마비, 약화, 부기, 작열감, 경련 또는 경직이 느껴지면 유저와 친화적 의 상담하십시오. 자세한 내용은 로지텍 웹 사이트(**http://www.logitech.com/comfort**) 또는 로지텍® 소프트웨어 CD에서 Comfort Guidelines에서 보십시오.

Class 1 LED 제품

본 제품에는 IEC 60825-1:1993+A1+A2를 준수하는 Class 1 LED가 장착되어 있습니다. 5°C(41°F)에서 40°C(104°F) 사이의 온도에서 작동합니다.

규정 준수에 대한 추가 정보

Class 1 LED 또는 기타 규정 준수 관련 문제는, **http://www.logitech.com/compliance**로 이동하거나 로지텍 고객 지원 센터에 연락하십시오. (고객 지원 번호는 제품 설명서에 나와 있습니다.)

배터리 경고!

잘못된 종류의 배터리를 교체하거나, 손상되거나, 전도 물질, 액체, 물 또는 과열(54°C 또는 130°F 이상)에 노출될 경우 폭발 및 부상의 위험이 발생할 수 있습니다. 이 모든 사용자에게 구매처에 따라 올바른 법칙 권리를 부여하고 해당 국가 또는 기타 관할 지역에 따라 다른 권리를 가질 수도 있습니다.

국가 법률 권한 소비자에게는 소비재 판매를 관할하는 해당 국가 법률에 의거한 법적 권리가 있습니다. 본 설명서에 기술된 제한 보증의 보증권 이러한 권리에 영향을 미치지 않습니다.

UL 규정: 본 제품에 대한 승인 받은 제품입니다.

UL 승인 목록의 ITE 컴퓨터에서만 사용하십시오.

로지텍 하드웨어 제품 보증 보증

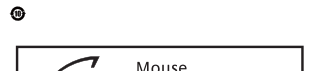
로지텍에서는 하드웨어 제품이나 구입일로부터 3년 동안 부품 및 기능에 있어서 중대한 결함이 없음을 보증합니다. 해당 법률에 의해 금지되는 경우를 제외하고 로지텍이 지정 한 장소로 반환하는 경우에 한합니다. 이 보증은 사용자에게 특정 법적 권리를 부여하고 해당 지역 의 법률에 따라 다른 권리를 가질 수도 있습니다.

보증 위반에 대한 로지텍의 전체 책임 및 사용자의 법적 구제방법은 로지텍의 선택에 따라 (1) 해당 하드웨어를 수리 또는 교체하는 것으로 합니다. 이는 단, 해당 하드웨어를 구매 한 경우 수분 및/또는 보증 카드 의 함께 구매하 로지텍이 지정 한 장소로 반환하는 경우에 한합니다. 해당 법률에 의해 금지되는 경우를 제외하고 배송 및 취급 비용이 부과될 수 있습니다. 로지텍은 모든 하드웨어 제품의 수리 또는 교체를 위해 선택에 따라 새 부품, 자성 부품 또는 상태가 양호한 중고 부품을 사용할 수 있습니다. 모든 교체 하드웨어 제품의 보증은 최초 보증 기간의 잔여 기간에 해당합니다.

| Region | Sales Office/Address | Technical Help |
|---|---|---|
| Logitech Far East Ltd. 羅技電子股份有限公司 | 6F-4, No. 123, Sec. 4, Pa-Teh Road, Taipei, Taiwan 臺北市八德路四段123號6樓之4 ☎ 886-2-2746-6601 ☎ 星期一—至五，上午九時至下午六時正 | ☎ 0800-012 300 (免付費) ☎ 星期一—至五，上午九時至下午六時正 |
| Logitech Singapore Pte Ltd. | 11 Maritime Square #09-31/32 HarbourFront Centre (Lobby A) Singapore 099253 ☎ 65-6270 5515 ☎ Monday - Friday, 9am - 6pm | ☎ 800-60-11-372 (Toll free for Singapore Only) ☎ 1800-88-0719 (Toll free for Malaysia Only) + (60) 3-2054-1886 (for Thailand, Indonesia, Indochina) ☎ Monday - Friday, 9am - 6pm |
| 罗技(北京)贸易有限公司 上海分公司 | 上海市宝庆路1号翠美高大厦 801 室 ☎ 86-21-6471 1188 ☎ 星期一至五，上午九时至下午五时三十分 | ☎ 800-820-0338 (固定电话-免付费) ☎ 400-820-0338 (移动电话-附本地通話费) ☎ 星期一至五，上午九时至下午六时正 |
| 罗技(北京)贸易有限公司 | 北京市朝陽區工体北路甲2號 盈科中心 B 座 702 室 ☎ 86-10-5905 2666 ☎ 星期一至五，上午九时至下午五时三十分 | ☎ 800-820-0338 (固定电话-免付费) ☎ 400-820-0338 (移动电话-附本地通話费) ☎ 星期一至五，上午九时至下午六时正 |
| Logitech Australia Computer Peripherals Pty Ltd. | Level 2, 608-610 Liverpool Road, South Strathfield NSW 2136 Australia ☎ 61-2-9764 8300 ☎ Monday - Friday, 9am - 5pm (AEST) | ☎ Australia: 1800-025-544 (Toll Free) ☎ Monday - Friday, 9am - 8pm (AEST) ☎ New Zealand: 0800-447-361 (Toll Free) ☎ Monday - Friday, 11am - 7pm (Auckland Time) |
| Logitech Electronic India PVT Ltd | MMTC House, Suite 603, 6th Floor C-22, Bandra Kurla Complex, Bandra East Mumbai 400 051, India ☎ 91-22-2657 1160 ☎ Monday - Friday, 9:30am - 6:30pm (IST) | ☎ 000 800 600 1133 (Toll free) ☎ Monday - Friday, 9:30am - 6:30pm (IST) |
| Logitech Asia Pacific Ltd | Hong Kong Sales & Marketing 18/F, Cambridge House, Takko Place, 979 King's Road, Quarry Bay, Hong Kong. ☎ 852-2821-5900 ☎ Monday - Friday, 9am - 6pm | ☎ 800-966-992 (Toll free) ☎ Monday - Friday, 9am - 6pm |

| | | |
|--|---|--|
|  |  |  |
| <p>MINI-CAM802 Rating: 5V in, 100mA Approved for IEC60320-200W/WL0 CMF ID: 2006010209</p> <p>1109P0P0CTEL2010 2010</p> <p>CE-CAEULP00011</p> <p>DBL-C-0060 MADE IN CHINA</p> | <p>Complies with IA Standards EUB01104</p> <p>DBL-C-0067 MADE IN CHINA</p> | <p>MINI-CAM807 Rating: 5V in, 100mA Approved for IEC60320-200W/WL0 CMF ID: 2010030203</p> <p>1109P0P0CTEL2010 2010</p> <p>CE-CAEULP00011</p> <p>DBL-C-0067 MADE IN CHINA</p> |

|  | <p>产品中有毒有害物质或元素名称及含量 根據中國<<電子信息產品污染控制管理辦法>></p> <table border="1"> <thead> <tr> <th>有毒有害物质或元素</th> <th>鉛 (Pb)</th> <th>汞 (Hg)</th> <th>鎘 (Cd)</th> <th>六價鉻 (Cr(VI))</th> <th>多氯聯苯 (PCB)</th> <th>多氯二聯苯 (PDB)</th> </tr> </thead> <tbody> <tr> <td>電腦 Cable</td> <td>X</td> <td>O</td> <td>O</td> <td>O</td> <td>O</td> <td>O</td> </tr> <tr> <td>電腦絕緣件 PWBs</td> <td>X</td> <td>O</td> <td>O</td> <td>O</td> <td>O</td> <td>O</td> </tr> <tr> <td>塑膠外殼 Plastic enclosure</td> <td>O</td> <td>O</td> <td>O</td> <td>O</td> <td>O</td> <td>O</td> </tr> <tr> <td>塑膠零件 Plastic parts</td> <td>O</td> <td>O</td> <td>O</td> <td>O</td> <td>O</td> <td>O</td> </tr> <tr> <td>金屬零件 Metal parts</td> <td>X</td> <td>O</td> <td>O</td> <td>O</td> <td>O</td> <td>O</td> </tr> </tbody> </table> <p>O = 表示該有毒物質在該部件所有同質材料中的含量符合 SJ/T11363-2006 標準規定的限量要求以下。 X = 表示該有毒物質在該部件所有同質材料中的含量超過 SJ/T11363-2006 標準規定的限量要求。</p> <p>表中標有“X”的所有部件都符合歐盟 RoHS 法規 “歐盟指令和限制標準 2002 年 1 月 27 日关于电子电器设备中限制使用某些有害物质 2002/95/EC 号指令” 注：环保使用期限的参数取决于产品正常使用工作的温度和湿度等条件</p> | 有毒有害物质或元素 | 鉛 (Pb) | 汞 (Hg) | 鎘 (Cd) | 六價鉻 (Cr(VI)) | 多氯聯苯 (PCB) | 多氯二聯苯 (PDB) | 電腦 Cable | X | O | O | O | O | O | 電腦絕緣件 PWBs | X | O | O | O | O | O | 塑膠外殼 Plastic enclosure | O | O | O | O | O | O | 塑膠零件 Plastic parts | O | O | O | O | O | O | 金屬零件 Metal parts | X | O | O | O | O | O |
|--|---|-----------|--------|--------------|------------|--------------|------------|-------------|----------|---|---|---|---|---|---|------------|---|---|---|---|---|---|------------------------|---|---|---|---|---|---|--------------------|---|---|---|---|---|---|------------------|---|---|---|---|---|---|
| 有毒有害物质或元素 | 鉛 (Pb) | 汞 (Hg) | 鎘 (Cd) | 六價鉻 (Cr(VI)) | 多氯聯苯 (PCB) | 多氯二聯苯 (PDB) | | | | | | | | | | | | | | | | | | | | | | | | | | | | | | | | | | | | | |
| 電腦 Cable | X | O | O | O | O | O | | | | | | | | | | | | | | | | | | | | | | | | | | | | | | | | | | | | | |
| 電腦絕緣件 PWBs | X | O | O | O | O | O | | | | | | | | | | | | | | | | | | | | | | | | | | | | | | | | | | | | | |
| 塑膠外殼 Plastic enclosure | O | O | O | O | O | O | | | | | | | | | | | | | | | | | | | | | | | | | | | | | | | | | | | | | |
| 塑膠零件 Plastic parts | O | O | O | O | O | O | | | | | | | | | | | | | | | | | | | | | | | | | | | | | | | | | | | | | |
| 金屬零件 Metal parts | X | O | O | O | O | O | | | | | | | | | | | | | | | | | | | | | | | | | | | | | | | | | | | | | |

| | |
|--|--|
|  | <p>Mouse Logitech Inc. Made in China</p> |
|--|--|

- 모델명 : 제품 라벨에 표기된 'M/N' 참조
- 제조년월 : 별도 표기(제품 라벨 혹은 제품)

| | |
|--|---|
|  |  |
| <p>Complies with IA Standards DB10104</p> | <p>당해 무선 설비는 전파혼신 가능성이 있으므로 인명안전과 관련된 서비스는 할 수 없음</p> |

依據台灣「低功率電波輻射性電機管理辦法」規定：
第十二條 經型式認證合格之低功率射頻電機，非經許可，公司、商號或使用者均不得擅自變更頻率、加大功率或變更原設計之特性及功能。

第十四條 低功率射頻電機之使用不得影響飛航安全及干擾合法通信；經發現有干擾現象時，應立即停用，並改善至無干擾時方得繼續使用。前項合法通信，指依電信法規定作業之無線電通信。低功率射頻電機須忍受合法通信或工業、科學及醫療用電波輻射性電機設備之干擾。

www.logitech.com

© 2010 Logitech. All rights reserved. Logitech, the Logitech logo, and other Logitech marks are owned by Logitech and may be registered. All other trademarks are the property of their respective owners. Logitech assumes no responsibility for any errors that may appear in this manual. Information contained herein is subject to change without notice.

Apple, Mac, and Macintosh are trademarks of Apple Inc., registered in the U.S. and other countries.

620-002152.005