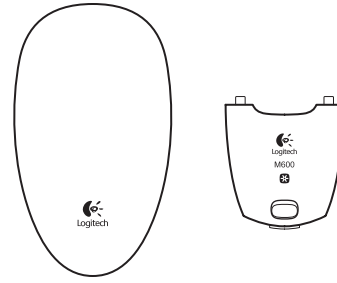
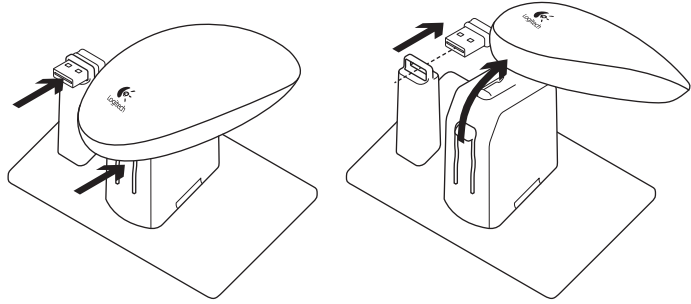




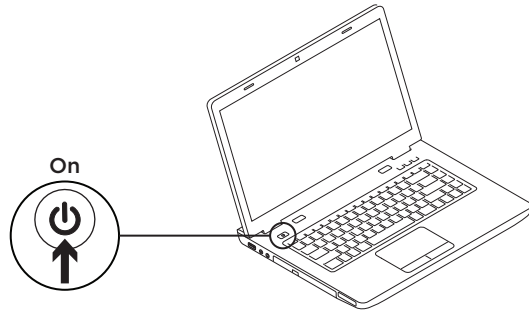
Getting started with
Première utilisation
Logitech® Touch Mouse M600



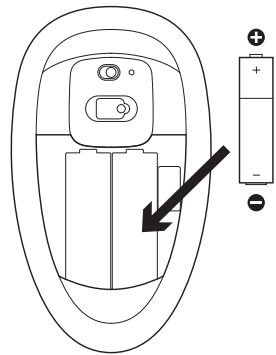
1



2



3



English

The mouse can operate on one or two batteries. Place the battery in either slot.

Français

The mouse can operate on one or two batteries. Place the battery in either slot.

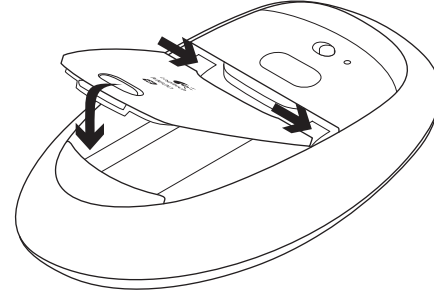
Español

The mouse can operate on one or two batteries. Place the battery in either slot.

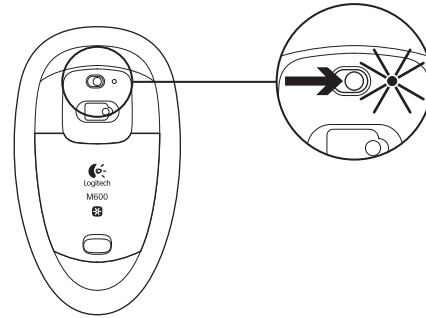
Português

The mouse can operate on one or two batteries. Place the battery in either slot.

4



5



English

The battery LED turns green when you install the batteries. It turns red when the batteries need replacing.

Français

The battery LED turns green when you install the batteries. It turns red when the batteries need replacing.

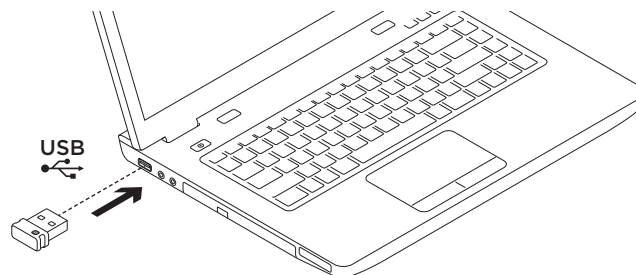
Español

The battery LED turns green when you install the batteries. It turns red when the batteries need replacing.

Português

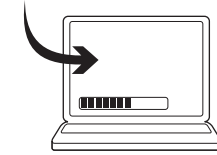
The battery LED turns green when you install the batteries. It turns red when the batteries need replacing.

6



7

www.logitech.com/support/M600



English

Recommended Your M600 is designed to take advantage of Logitech's smooth scrolling application. Download the free app from www.logitech.com/support/M600.

If you want to switch your mouse from right- to left-hand operation or to receive on-screen battery warnings, download the SetPoint™ software.

Français

Recommended Your M600 is designed to take advantage of Logitech's smooth scrolling application. Download the free app from www.logitech.com/support/M600.

If you want to switch your mouse from right- to left-hand operation or to receive on-screen battery warnings, download the SetPoint™ software.

Español

Recommended Your M600 is designed to take advantage of Logitech's smooth scrolling application. Download the free app from www.logitech.com/support/M600.

If you want to switch your mouse from right- to left-hand operation or to receive on-screen battery warnings, download the SetPoint™ software.

Português

Recommended Your M600 is designed to take advantage of Logitech's smooth scrolling application. Download the free app from www.logitech.com/support/M600.

If you want to switch your mouse from right- to left-hand operation or to receive on-screen battery warnings, download the SetPoint™ software.

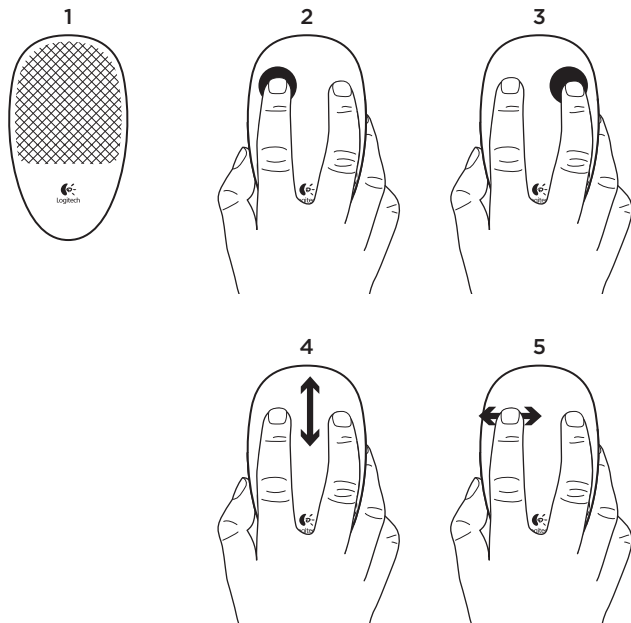


M/N: C-U0007
 Rating: 5V = 100mA
 FCC ID: JNZCU0007
 IC: 4418A-CU0007
 CNC: C-8941
 CFT: RCPLOCU10-1356



M/N: C-U0008
 Rating: 5V = 100mA
 FCC ID: JNZCU0008
 IC: 4418A-CU0008
 SUBTEL: 2217
 CNC: C-9341
 CFT: RCPLOCU11-0321





English

Touch gestures

1. Touch-sensitive area
2. Left button—press down until you hear a “click.”
3. Right button—press down only on the right half of the touch-sensitive surface until you hear a “click.”
4. Scrolling—slide one or two fingers up or down. Stop to end scrolling. “Flick” to perform inertial scrolling.
5. Back/forward—for browser pages or photo albums. To go back, swipe one finger from right to left, and then lift. To go forward, swipe left to right.

Français

Touch gestures

1. Touch-sensitive area
2. Left button—press down until you hear a “click.”
3. Right button—press down only on the right half of the touch-sensitive surface until you hear a “click.”
4. Scrolling—slide one or two fingers up or down. Stop to end scrolling. “Flick” to perform inertial scrolling.
5. Back/forward—for browser pages or photo albums. To go back, swipe one finger from right to left, and then lift. To go forward, swipe left to right.

Español

Touch gestures

1. Touch-sensitive area
2. Left button—press down until you hear a “click.”
3. Right button—press down only on the right half of the touch-sensitive surface until you hear a “click.”
4. Scrolling—slide one or two fingers up or down. Stop to end scrolling. “Flick” to perform inertial scrolling.
5. Back/forward—for browser pages or photo albums. To go back, swipe one finger from right to left, and then lift. To go forward, swipe left to right.

Português

Touch gestures

1. Touch-sensitive area
2. Left button—press down until you hear a “click.”
3. Right button—press down only on the right half of the touch-sensitive surface until you hear a “click.”
4. Scrolling—slide one or two fingers up or down. Stop to end scrolling. “Flick” to perform inertial scrolling.
5. Back/forward—for browser pages or photo albums. To go back, swipe one finger from right to left, and then lift. To go forward, swipe left to right.



English

Logitech® Unifying technology connects up to six compatible Logitech mice and keyboards to the same receiver, using only one USB port for multiple devices. To learn more, visit www.logitech.com/unifying.

Français

Logitech® Unifying technology connects up to six compatible Logitech mice and keyboards to the same receiver, using only one USB port for multiple devices. To learn more, visit www.logitech.com/unifying.

Español

Logitech® Unifying technology connects up to six compatible Logitech mice and keyboards to the same receiver, using only one USB port for multiple devices. To learn more, visit www.logitech.com/unifying.

Português

Logitech® Unifying technology connects up to six compatible Logitech mice and keyboards to the same receiver, using only one USB port for multiple devices. To learn more, visit www.logitech.com/unifying.

English

Troubleshooting

Mouse not working?

- Is the On/Off slider switch set to ON?
- Is the Unifying receiver plugged into a computer USB port? Try changing ports. Use a port closest to the mouse. Don't use a USB hub.
- Check battery orientation: positive poles point up. Replace the batteries if necessary.

Having trouble with gestures?

Putting extra fingers or your palm on the touch-sensitive area while you perform a gesture may cause an unexpected response. For more troubleshooting information, visit www.logitech.com/support/M600.

Français

Troubleshooting

Mouse not working?

- Is the On/Off slider switch set to ON?
- Is the Unifying receiver plugged into a computer USB port? Try changing ports. Use a port closest to the mouse. Don't use a USB hub.
- Check battery orientation: positive poles point up. Replace the batteries if necessary.

Having trouble with gestures?

Putting extra fingers or your palm on the touch-sensitive area while you perform a gesture may cause an unexpected response. For more troubleshooting information, visit www.logitech.com/support/M600.

Español

Troubleshooting

Mouse not working?

- Is the On/Off slider switch set to ON?
- Is the Unifying receiver plugged into a computer USB port? Try changing ports. Use a port closest to the mouse. Don't use a USB hub.
- Check battery orientation: positive poles point up. Replace the batteries if necessary.

Having trouble with gestures?

Putting extra fingers or your palm on the touch-sensitive area while you perform a gesture may cause an unexpected response. For more troubleshooting information, visit www.logitech.com/support/M600.

Português

Troubleshooting

Mouse not working?

- Is the On/Off slider switch set to ON?
- Is the Unifying receiver plugged into a computer USB port? Try changing ports. Use a port closest to the mouse. Don't use a USB hub.
- Check battery orientation: positive poles point up. Replace the batteries if necessary.

Having trouble with gestures?

Putting extra fingers or your palm on the touch-sensitive area while you perform a gesture may cause an unexpected response. For more troubleshooting information, visit www.logitech.com/support/M600.



www.logitech.com

© 2011 Logitech. All rights reserved. Logitech, the Logitech logo, and other Logitech marks are owned by Logitech and may be registered. All other trademarks are the property of their respective owners. Logitech assumes no responsibility for any errors that may appear in this manual. Information contained herein is subject to change without notice.

© 2011 Logitech. All rights reserved. Logitech, the Logitech logo, and other Logitech marks are owned by Logitech and may be registered. All other trademarks are the property of their respective owners. Logitech assumes no responsibility for any errors that may appear in this manual. Information contained herein is subject to change without notice.

620-003691.002

www.logitech.com/support/M600



United States	+1 646-454-3200	Chile	1230 020 5484
Argentina	+00800-555-3284	Latin America	+1 800-578-9619
Brasil	+0 800-891-4173	Mexico	001 800 578 9619
Canada	+1 866-934-5644		

www.logitech.com/ithink

What do you think?

Please take a minute to tell us. Thank you for purchasing our product.

Qu'en pensez-vous?

Prenez quelques minutes pour nous faire part de vos commentaires. Vous venez d'acheter ce produit et nous vous en remercions.

¿Cuál es su opinión?

Nos gustaría conocerla, si puede dedicarnos un minuto. Le agradecemos la adquisición de nuestro producto.

O que você acha?

Reserve um minuto para nos dizer. Obrigado por adquirir nosso produto.