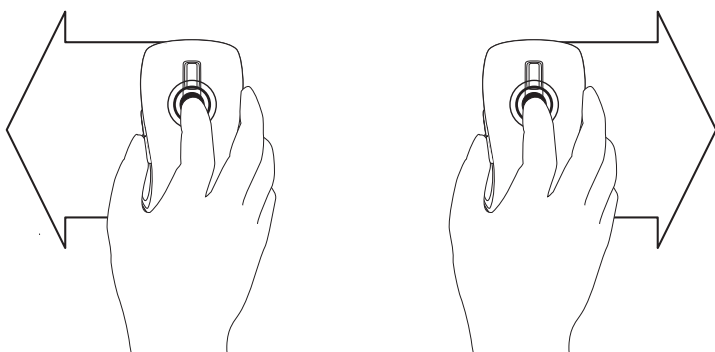
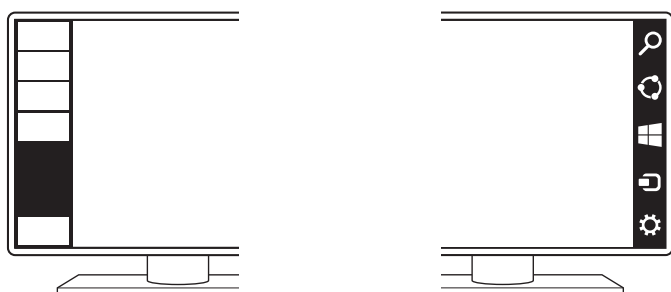
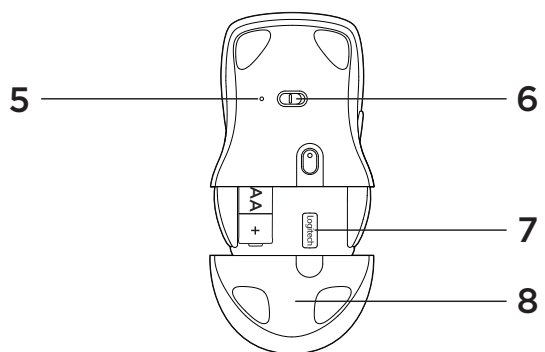
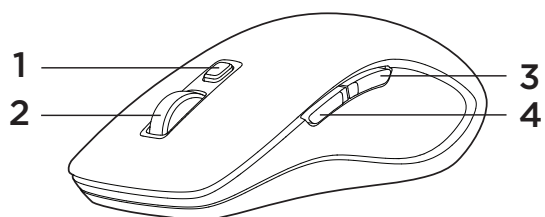
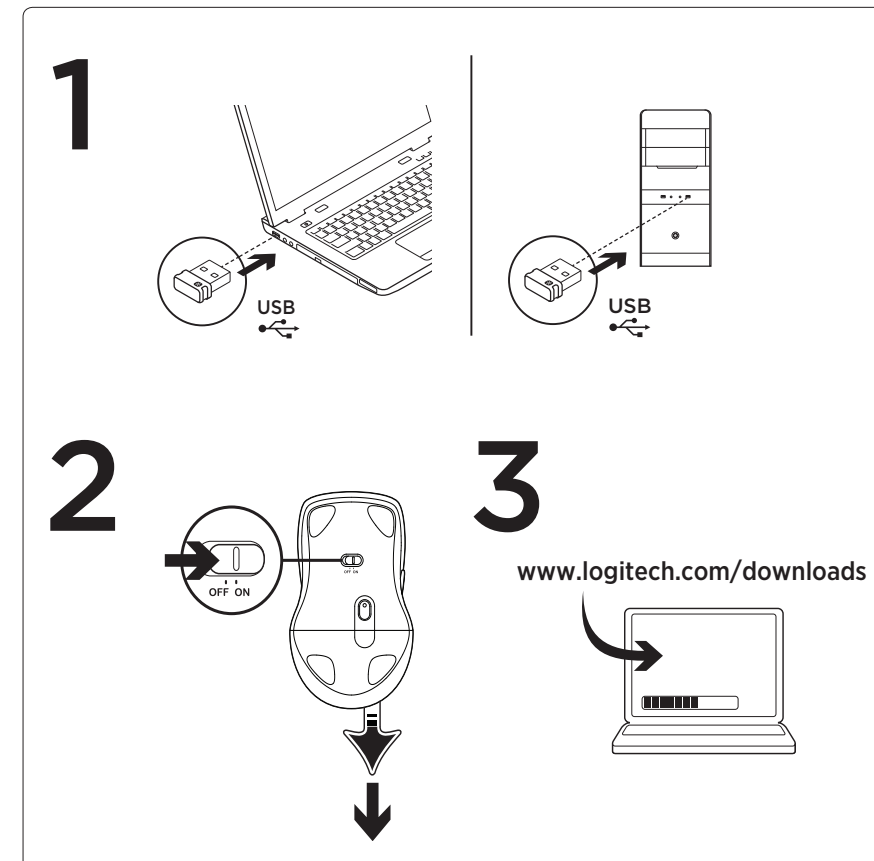




Logitech® Wireless Mouse M560

Setup Guide
Guide d'installation



English

Mouse features

Windows 8 features

- Windows 8 shortcuts button:
 - Hold down the button and move your mouse to the left to display the Windows 8 App bar. Release to select.
 - Hold down the button and move your mouse to the right to display the Windows 8 Charms. Release to select.

- Scroll wheel:
 - Press the wheel down to switch between hyper-fast scrolling and click-to-click scrolling.
 - Tilt the wheel left/right for Internet back/forward.

- Show the Windows desktop.
- Show the Windows 8 Start screen.

For more Windows 8 mouse features and options, download the latest software from www.logitech.com/downloads.

Windows 7 features (software required)

- Application switcher.
- Scroll wheel:
 - Press the wheel down to switch between hyper-fast scrolling and click-to-click scrolling.
 - Tilt the wheel left/right for horizontal scroll.

- Back button.
- Forward button.

To activate the Windows 7 features you must download the latest software from www.logitech.com/downloads.

- Battery LED. Illuminates red when battery power is low, green when battery power is good.
- On/Off slider switch.
- Receiver storage.
- Battery door.

Français

Mouse features

Windows 8 features

- Windows 8 shortcuts button:
 - Hold down the button and move your mouse to the left to display the Windows 8 App bar. Release to select.
 - Hold down the button and move your mouse to the right to display the Windows 8 Charms. Release to select.

- Scroll wheel:
 - Press the wheel down to switch between hyper-fast scrolling and click-to-click scrolling.
 - Tilt the wheel left/right for Internet back/forward.

- Show the Windows desktop.
- Show the Windows 8 Start screen.

For more Windows 8 mouse features and options, download the latest software from www.logitech.com/downloads.

Windows 7 features (software required)

- Application switcher.
- Scroll wheel:
 - Press the wheel down to switch between hyper-fast scrolling and click-to-click scrolling.
 - Tilt the wheel left/right for horizontal scroll.

- Back button.
- Forward button.

To activate the Windows 7 features you must download the latest software from www.logitech.com/downloads.

- Battery LED. Illuminates red when battery power is low, green when battery power is good.
- On/Off slider switch.
- Receiver storage.
- Battery door.

Español

Mouse features

Windows 8 features

- Windows 8 shortcuts button:
 - Hold down the button and move your mouse to the left to display the Windows 8 App bar. Release to select.
 - Hold down the button and move your mouse to the right to display the Windows 8 Charms. Release to select.

- Scroll wheel:
 - Press the wheel down to switch between hyper-fast scrolling and click-to-click scrolling.
 - Tilt the wheel left/right for Internet back/forward.

- Show the Windows desktop.
- Show the Windows 8 Start screen.

For more Windows 8 mouse features and options, download the latest software from www.logitech.com/downloads.

Windows 7 features (software required)

- Application switcher.
- Scroll wheel:
 - Press the wheel down to switch between hyper-fast scrolling and click-to-click scrolling.
 - Tilt the wheel left/right for horizontal scroll.

- Back button.
- Forward button.

To activate the Windows 7 features you must download the latest software from www.logitech.com/downloads.

- Battery LED. Illuminates red when battery power is low, green when battery power is good.
- On/Off slider switch.
- Receiver storage.
- Battery door.

Português

Mouse features

Windows 8 features

- Windows 8 shortcuts button:
 - Hold down the button and move your mouse to the left to display the Windows 8 App bar. Release to select.
 - Hold down the button and move your mouse to the right to display the Windows 8 Charms. Release to select.

- Scroll wheel:
 - Press the wheel down to switch between hyper-fast scrolling and click-to-click scrolling.
 - Tilt the wheel left/right for Internet back/forward.

- Show the Windows desktop.
- Show the Windows 8 Start screen.

For more Windows 8 mouse features and options, download the latest software from www.logitech.com/downloads.

Windows 7 features (software required)

- Application switcher.
- Scroll wheel:
 - Press the wheel down to switch between hyper-fast scrolling and click-to-click scrolling.
 - Tilt the wheel left/right for horizontal scroll.

- Back button.
- Forward button.

To activate the Windows 7 features you must download the latest software from www.logitech.com/downloads.

- Battery LED. Illuminates red when battery power is low, green when battery power is good.
- On/Off slider switch.
- Receiver storage.
- Battery door.



English

Logitech® Unifying technology connects up to six compatible Logitech mice and keyboards to the same receiver, using only one USB port for multiple devices. To learn more, visit www.logitech.com/unifying.

Français

Logitech® Unifying technology connects up to six compatible Logitech mice and keyboards to the same receiver, using only one USB port for multiple devices. To learn more, visit www.logitech.com/unifying.

Español

Logitech® Unifying technology connects up to six compatible Logitech mice and keyboards to the same receiver, using only one USB port for multiple devices. To learn more, visit www.logitech.com/unifying.

Português

Logitech® Unifying technology connects up to six compatible Logitech mice and keyboards to the same receiver, using only one USB port for multiple devices. To learn more, visit www.logitech.com/unifying.

English

Troubleshooting

Mouse is not working?

- Restart the mouse by turning it off and then back on?
- If the battery LED illuminates red, replace the battery.
- Check that the Unifying receiver is properly connected to a USB port.
- If the Unifying receiver is plugged into a USB hub, try plugging it directly into a USB port on your computer.
- Try a different surface. Remove metallic objects between the mouse and the Unifying receiver.
- Keep the Unifying receiver as far as possible from other USB 3.0 devices, by plugging it on a USB port the opposite side of the computer from the USB 3.0 device, or by using a shielded USB-extender cable.
- A shielded USB-extender cable is available for Logitech customers experiencing connection problems at www.logitech.com/usbextender.

Français

Troubleshooting

Mouse is not working?

- Restart the mouse by turning it off and then back on?
- If the battery LED illuminates red, replace the battery.
- Check that the Unifying receiver is properly connected to a USB port.
- If the Unifying receiver is plugged into a USB hub, try plugging it directly into a USB port on your computer.
- Try a different surface. Remove metallic objects between the mouse and the Unifying receiver.
- Keep the Unifying receiver as far as possible from other USB 3.0 devices, by plugging it on a USB port the opposite side of the computer from the USB 3.0 device, or by using a shielded USB-extender cable.
- A shielded USB-extender cable is available for Logitech customers experiencing connection problems at www.logitech.com/usbextender.

Español

Troubleshooting

Mouse is not working?

- Restart the mouse by turning it off and then back on?
- If the battery LED illuminates red, replace the battery.
- Check that the Unifying receiver is properly connected to a USB port.
- If the Unifying receiver is plugged into a USB hub, try plugging it directly into a USB port on your computer.
- Try a different surface. Remove metallic objects between the mouse and the Unifying receiver.
- Keep the Unifying receiver as far as possible from other USB 3.0 devices, by plugging it on a USB port the opposite side of the computer from the USB 3.0 device, or by using a shielded USB-extender cable.
- A shielded USB-extender cable is available for Logitech customers experiencing connection problems at www.logitech.com/usbextender.

Português

Troubleshooting

Mouse is not working?

- Restart the mouse by turning it off and then back on?
- If the battery LED illuminates red, replace the battery.
- Check that the Unifying receiver is properly connected to a USB port.
- If the Unifying receiver is plugged into a USB hub, try plugging it directly into a USB port on your computer.
- Try a different surface. Remove metallic objects between the mouse and the Unifying receiver.
- Keep the Unifying receiver as far as possible from other USB 3.0 devices, by plugging it on a USB port the opposite side of the computer from the USB 3.0 device, or by using a shielded USB-extender cable.
- A shielded USB-extender cable is available for Logitech customers experiencing connection problems at www.logitech.com/usbextender.

www.logitech.com/ithink

What do you think?
Please take a minute to tell us.
Thank you for purchasing our product.

Qu'en pensez-vous?

Prenez quelques minutes pour nous faire part de vos commentaires.
Vous venez d'acheter ce produit et nous vous en remercions.

¿Cuál es su opinión?

Nos gustaría conocerla, si puede dedicarnos un minuto.
Le agradecemos la adquisición de nuestro producto.

O que você acha?

Reserve um minuto para nos dizer.
Obrigado por adquirir nosso produto.



www.logitech.com

www.logitech.com/support/m560



Argentina	+00800-555-3284
Brasil	+0 800-891-4173
Canada	+1866-934-5644
Chile	1230 020 5484
Colombia	01-800-913-6668
Latin America	+1800-578-9619
Mexico	01.800.800.4500
United States	+1 646-454-3200



M/N: C-U0007
Rating: 5V --- 100mA
FCC ID: JNZCU0007
IC: 4418A-CU0007
CNC: C-8941
CFT: RCPLOCU10-1356



M/N: C-U0008
Rating: 5V --- 100mA
FCC ID: JNZCU0008
IC: 4418A-CU0008
SUBTEL: 2217
CNC: C-9341
CFT: RCPLOCU11-0321



© 2013 Logitech. All rights reserved. Logitech, the Logitech logo, and other Logitech marks are owned by Logitech and may be registered. All other trademarks are the property of their respective owners. Logitech assumes no responsibility for any errors that may appear in this manual. Information contained herein is subject to change without notice.

© 2013 Logitech. All rights reserved. Logitech, the Logitech logo, and other Logitech marks are owned by Logitech and may be registered. All other trademarks are the property of their respective owners. Logitech assumes no responsibility for any errors that may appear in this manual. Information contained herein is subject to change without notice.