



Getting started with
Première utilisation

Logitech® Wireless Mouse M238/M317c

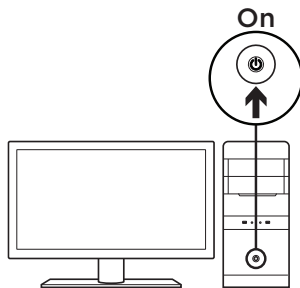
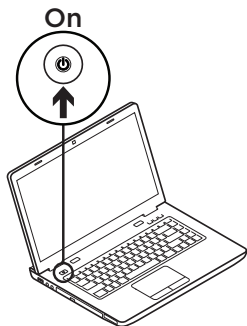
Logitech® Souris sans fil M238/M317c



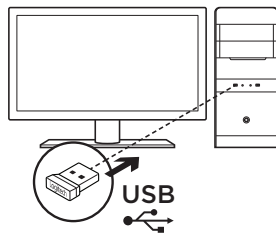
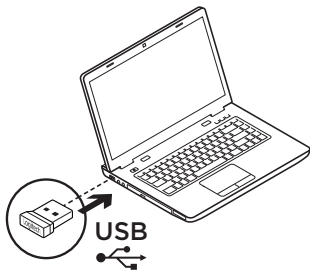
English.	3	Español	17
Français	10	Português.	24

 Set-up

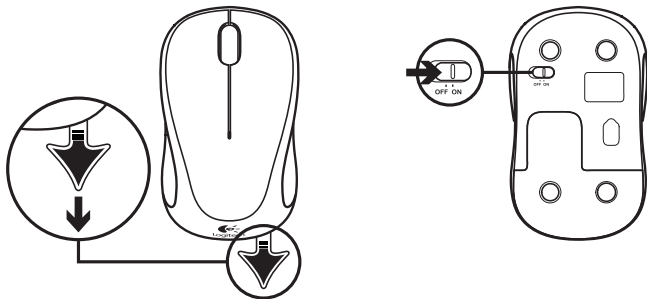
1



2



3

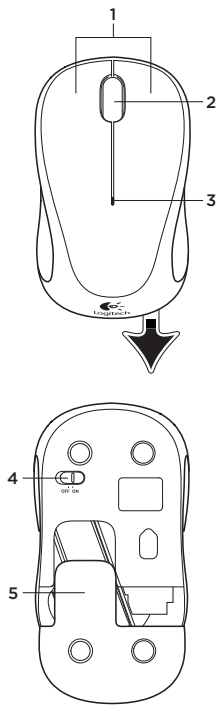


Plug the receiver into a computer USB port. Your mouse is now ready for use.

Mac® OS X Users:

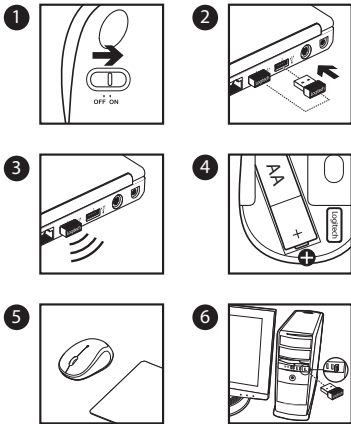
When plugging in the receiver, the Keyboard Assistant window may appear. Please close this window.

Mouse features



1. Left and right buttons.
2. Scroll wheel
Press the wheel down for middle button (function can vary by software application).
3. Battery LED
Flashes red when battery power is low.
4. On/Off slider switch.
5. Battery door release.

Help with setup: Mouse is not working



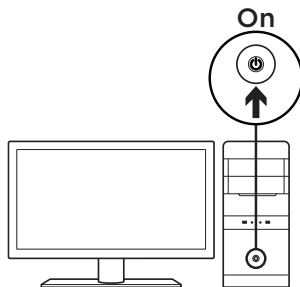
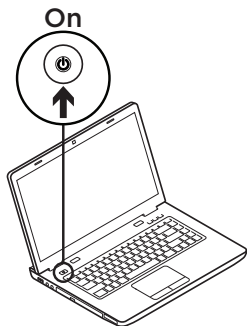
1. Is the mouse powered on?
2. Is the receiver securely plugged into a computer USB port?
3. If the receiver is plugged into a USB hub, try plugging it directly into a USB port on your computer.
4. Check the orientation of the batteries inside the mouse. To check battery power, turn the mouse OFF and then ON. If the battery indicator light glows red or does not glow at all, replace the batteries.
5. Try using the mouse on a different surface. Remove metallic objects between the mouse and the receiver.
6. Try moving the receiver to a USB port closer to the mouse.



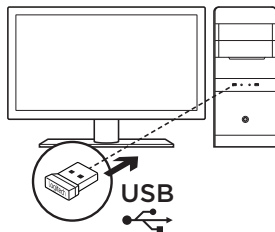
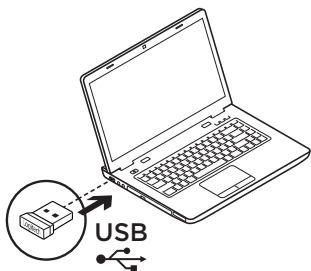
The receiver with this mouse does not integrate the Logitech® Unifying technology. However, the mouse itself is Unifying-ready and can be used with any Logitech® Unifying receivers you may already have. Logitech® Unifying technology connects up to six compatible Logitech mice and keyboards to the same receiver, using only one USB port for multiple devices. To learn more, visit www.logitech.com/unifying.

 Installation

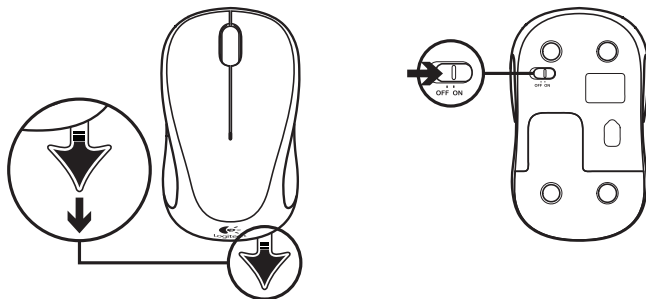
1



2



3

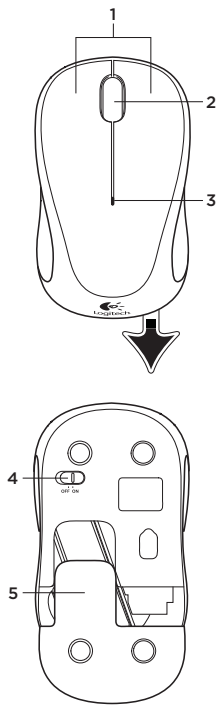


Branchez le récepteur sur un port USB de l'ordinateur. Votre souris est prête à l'emploi.

Utilisateurs Mac® OS X:

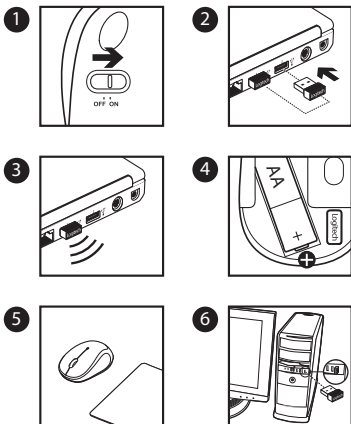
Lorsque vous branchez le récepteur, la fenêtre de l'assistant de configuration du clavier peut s'afficher. Fermez cette fenêtre.

Fonctions de la souris



1. Boutons droit et gauche.
2. Roulette de défilement
Appuyez sur la roulette pour l'utiliser comme bouton central (la fonction varie suivant l'application logicielle).
3. Témoin lumineux
Clignote en rouge lorsque le niveau de charge de la pile est faible.
4. Commutateur Marche/Arrêt.
5. Bouton d'ouverture du compartiment des piles.

Vous avez besoin d'aide pour la configuration? La souris ne fonctionne pas



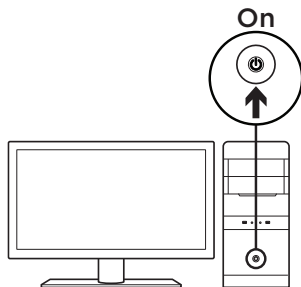
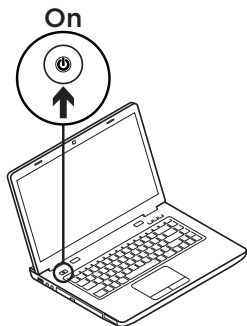
1. La souris est-elle sous tension?
2. Le récepteur est-il correctement branché sur un port USB de l'ordinateur?
3. Si le récepteur est branché dans un hub USB, branchez-le plutôt directement sur l'ordinateur.
4. Vérifiez que les piles sont bien orientées dans la souris. Pour vérifier le niveau de charge des piles, mettez la souris hors tension, puis sous tension. Si le témoin de niveau des piles s'allume en rouge ou reste éteint, remplacez les piles.
5. Essayez d'utiliser la souris sur une surface différente. Déplacez tout objet métallique se trouvant entre la souris et le récepteur.
6. Essayez de brancher le récepteur sur un port USB plus proche de la souris.



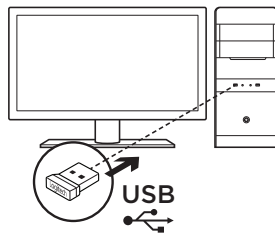
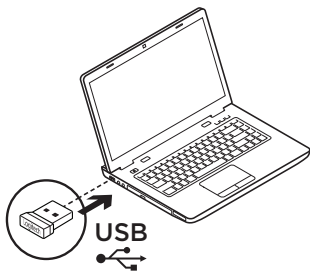
La technologie Logitech® Unifying n'est pas intégrée au récepteur de cette souris. Cependant, la souris, elle, est compatible Unifying et peut être utilisée avec tout récepteur Logitech® Unifying dont vous disposez. La technologie Logitech® Unifying permet de connecter jusqu'à six claviers et souris Logitech compatibles au même récepteur, le tout avec un seul port USB. Pour en savoir plus, visitez le site www.logitech.com/unifying.

✕ Instalación

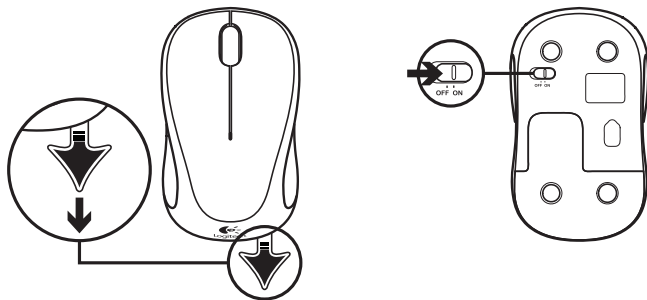
1



2



3

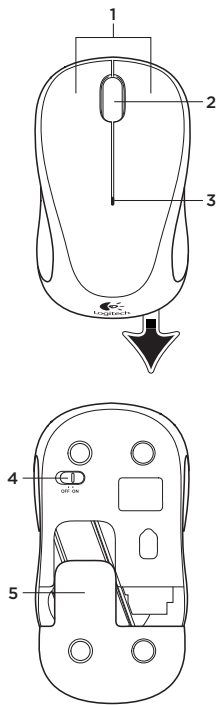


Conecta el receptor a un puerto USB de la computadora. El mouse está listo para usar.

Usuarios de Mac® OS X:

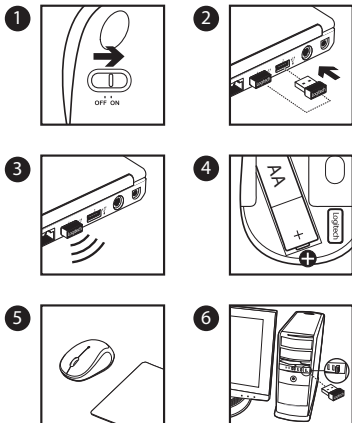
Al conectar el receptor, es posible que aparezca la ventana del asistente para el teclado. Debes cerrar esta ventana.

Características del mouse



1. Botones izquierdo y derecho.
2. Botón rueda
Pulsa el botón rueda para usarlo como botón central (la función puede variar según la aplicación de software).
3. LED de estado de baterías
Emite destellos rojos cuando la carga de las baterías es baja.
4. Conmutador de encendido/apagado.
5. Cubierta del compartimento para las pilas.

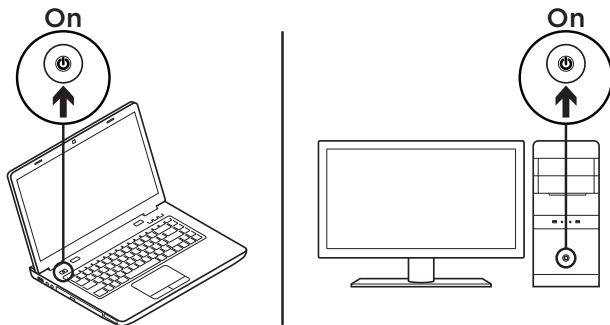
Ayuda con la instalación: El mouse no funciona



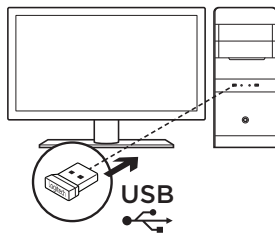
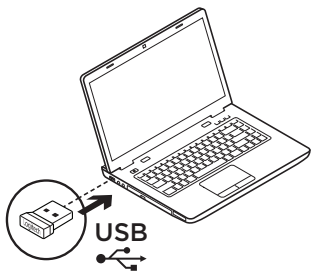
1. ¿Has encendido el mouse?
2. ¿Está el receptor conectado correctamente a un puerto USB de la computadora?
3. Si el receptor está conectado a un concentrador USB, conéctalo directamente a la computadora.
4. Comprueba la orientación de las baterías dentro del mouse. Para comprobar la carga de las baterías, apaga y enciende el mouse. Si el indicador de estado de las baterías se ilumina de color rojo, o no se ilumina, cambia las baterías.
5. Usa el mouse en otra superficie. Retira cualquier objeto metálico situado entre el mouse y el receptor.
6. Intenta cambiar el receptor a un puerto USB más cercano al mouse.



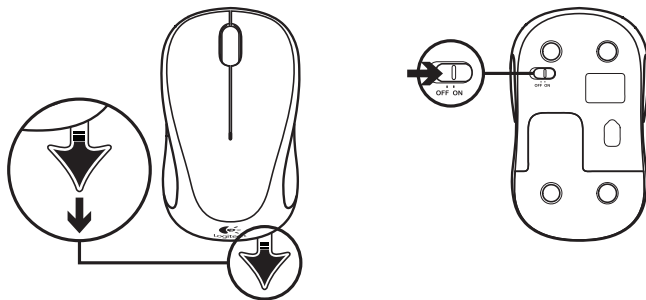
El receptor del mouse no se puede integrar con la tecnología Logitech® Unifying. Sin embargo, el mouse es compatible con Unifying y puedes utilizarlo con cualquier receptor Logitech® Unifying del que dispongas. La tecnología Logitech® Unifying conecta hasta seis mouses y teclados Logitech al mismo receptor, con lo que se usa un solo puerto USB para varios dispositivos. Si deseas obtener más información, visita www.logitech.com/unifying.

✕ Configuração**1**

2



3

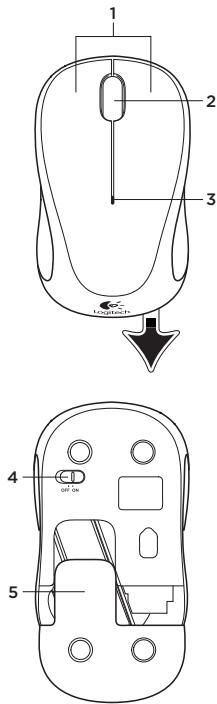


Ligue o receptor a uma porta USB do computador. Seu mouse agora está pronto para ser usado.

Usuários do Mac® OS X:

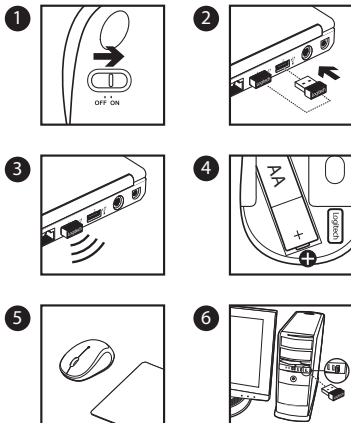
Ao conectar o receptor, poderá ser exibida a janela Assistente de instalação do teclado. Feche essa janela.

Recursos do mouse



1. Botões esquerdo e direito.
2. Roda de rolagem
Pressione a roda para acionar o botão do meio (a função varia conforme o aplicativo de software).
3. LED de bateria
Uma luz vermelha pisca quando há pouca energia.
4. Controle deslizante para ligar/desligar.
5. Liberação da porta do compartimento das pilhas.

Ajuda para a configuração: O mouse não funciona



1. O mouse está ligado?
2. O receptor está conectado corretamente a uma porta USB do computador?
3. Se o receptor estiver conectado a um concentrador USB, tente conectá-lo
4. Verifique a orientação das pilhas dentro do mouse. Para verificar a energia das pilhas, desligue e ligue o mouse. Se a luz vermelha do indicador de nível de energia se acender, ou se nenhuma luz se acender, troque as pilhas.
5. Tente usar o mouse em uma outra superfície. Remova objetos metálicos entre o mouse e o receptor.
6. Experimente mover o receptor para uma porta USB mais próxima do mouse.



O receptor do mouse não se integra à tecnologia Logitech® Unifying. Entretanto, o mouse em si é compatível com a tecnologia Unifying e pode ser usado com qualquer receptor Logitech® Unifying que você eventualmente possua. A tecnologia Logitech® Unifying conecta até seis mouses e teclados da Logitech compatíveis ao mesmo receptor, usando somente uma porta USB para vários dispositivos. Para saber mais, visite www.logitech.com/unifying.

M/N:C-U0010



CFT: RCPLOCU12-1156



M/N:M-R0038



CNC: C-11077





www.logitech.com/support/M238

www.logitech.com/support/M317c

© 2015 Logitech. All rights reserved. Logitech, the Logitech logo, and other Logitech marks are owned by Logitech and may be registered. All other trademarks are the property of their respective owners. Logitech assumes no responsibility for any errors that may appear in this manual. Information contained herein is subject to change without notice.

© 2015 Logitech. Tous droits réservés. Logitech, le logo Logitech et les autres marques Logitech sont la propriété de Logitech et sont susceptibles d'être déposés. Toutes les autres marques commerciales sont la propriété de leurs détenteurs respectifs. Logitech décline toute responsabilité en cas d'erreurs dans ce manuel. Les informations énoncées dans ce document peuvent faire l'objet de modifications sans avis préalable.

621-000480.002