



Logitech®
M-RBY125
Cordless Mouse for
Notebooks

Quick start
guide

Thank you! Merci! Obrigado! ¡Gracias!

English

Thank you for purchasing the Logitech® V450 Nano Cordless Laser Mouse for Notebooks. Follow the easy steps in this guide to begin enjoying the features of your new mouse.

Español

Le agradecemos la adquisición de Logitech® V450 Nano Cordless Laser Mouse for Notebooks. El sencillo procedimiento detallado en esta guía le permitirá empezar a disfrutar de las funciones de su nuevo ratón.

Français

Nous vous remercions d'avoir acheté le souris Logitech® V450 Nano Cordless Laser Mouse for Notebooks. Suivez les étapes de ce guide pour commencer à apprécier les fonctionnalités de votre nouvelle souris.

Português

Obrigado por ter adquirido o Rato Laser Sem Fios Logitech® V450 Nano para Portáteis. Siga os passos simples neste guia para começar a desfrutar das funcionalidades do novo rato.

1 Package contents



English

Package contents

1. Mouse
2. USB Plug-and-Forget Nano-receiver
3. Desktop USB extension stand
4. Two AA alkaline batteries
5. Quick start guide

Español

Esta caja contiene

1. Ratón
2. Nano-receptor USB de tipo "conectar y olvidar"
3. Base de extensión USB de sobremesa
4. Dos pilas alcalinas AA
5. Guía de inicio rápido

Français

Contenu

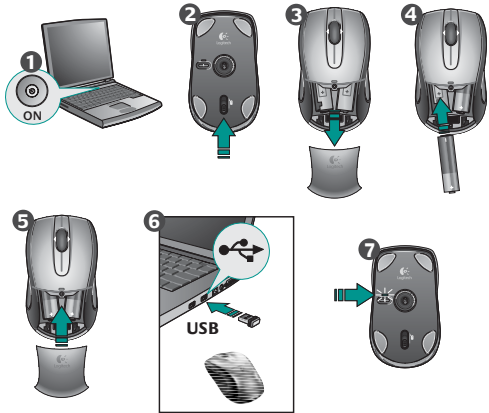
1. Souris
2. Nano-récepteur USB ultra-discret
3. Support d'extension USB pour le bureau
4. Deux piles alcalines de type AA
5. Guide de démarrage rapide

Português

Conteúdo da embalagem

1. Rato
2. Nano-Receptor USB "Ligar e Esquecer"
3. Suporte de secretária de extensão USB
4. Duas pilhas AA alcalinas de type AA
5. Guia de iniciação rápida

2 Setting up the mouse



English

Setting up the mouse

1. Turn on the computer.
2. Slide the Release button on the bottom of the mouse to release the battery door.
3. Remove the battery door.
4. Insert the two AA alkaline batteries in the mouse battery compartment.
5. Replace the battery door.
6. Insert the USB Plug-and-Forget Nano-receiver into a notebook USB port. So small, the USB Nano-receiver can stay attached to your notebook permanently.
7. The green LED light on the mouse bottom should be on. (If the green LED light is not on, go to the Troubleshooting section for more information.)

Congratulations! You can now enjoy the basic functions of your mouse, including the left- and right-mouse buttons, up and down scrolling with the wheel, and the middle mouse button (the wheel button). In Microsoft® Windows®, the function assigned to the middle button depends on the application you are using. In Macintosh® OS X, the middle button typically does not have a function unless the software is installed.

Español

Configuración del ratón

1. Enciende el ordenador.
2. Deslice el botón situado en la parte inferior del ratón para abrir el compartimiento de las pilas.
3. Quite la tapa.
4. Inserte las dos pilas alcalinas AA en el compartimiento.
5. Coloque la tapa en su sitio.
6. Conecte el nanorreceptor USB a un puerto USB del portátil. El nanorreceptor es de tipo "conectar y olvidar", tan pequeño que puede seguir conectado al portátil permanentemente.
7. Debería iluminarse el diodo verde, en la parte inferior del ratón. De no ser así, consulte la sección de resolución de problemas.

¡Enhorabuena! Ya puede disfrutar de las funciones básicas del ratón: con los botones izquierdo y derecho, el botón rueda para desplazamiento vertical y dicho botón también utilizable como botón central, mediante pulsación. En Microsoft® Windows®, la función asignada al botón central depende de la aplicación en uso. En Macintosh® OS X, el botón central no suele realizar ninguna función a menos que se haya instalado el software.

Français

Configuration de la souris

1. Mettez l'ordinateur sous tension.
2. Faites glisser le bouton d'ouverture situé sous la souris pour ouvrir le clapet du compartiment à piles.
3. Otez le clapet du compartiment.
4. Insérez les deux piles alcalines de type AA dans le compartiment.
5. Remettez le clapet en place.
6. Insérez le nano-récepteur USB ultra-discret dans l'un des ports USB de l'ordinateur portable. Le nano-récepteur est si petit que vous pouvez le laisser relié à l'ordinateur portable en permanence.
7. Le témoin vert situé sous la souris doit être illuminé. Si ce n'est pas le cas, accédez à la section de dépannage pour en savoir plus.

Félicitations! Vous pouvez maintenant profiter des fonctions élémentaires de la souris, comme les boutons gauche et droit, la roulette de défilement vertical et le bouton central (bouton de la roulette). Sous Microsoft® Windows®, la fonction attribuée au bouton central dépend de l'application en cours d'utilisation. Sous Macintosh® OS X, le bouton central ne possède généralement aucune fonction, à moins que le logiciel ne soit installé.

Português

Configurar o rato

1. Ligue o computador.
2. Desloque o botão Release na parte inferior do rato para libertar a porta do compartimento das pilhas.
3. Remova o compartimento das pilhas.
4. Introduza as duas pilhas alcalinas AA no compartimento de pilhas do rato.
5. Volte a colocar a porta das pilhas.
6. Introduza o Nano-Receptor USB "Ligar e Esquecer" numa porta USB do portátil. Devido à sua pequena dimensão, o Nano-Receptor USB pode estar permanentemente ligado ao portátil.
7. O LED verde na parte inferior do rato deve estar ligado. (Se o LED verde não estiver ligado, consulte a secção Resolução de Problemas para obter mais informações.)

Parabéns! Agora pode desfrutar das funções básicas do rato, incluindo botões esquerdo e direito do rato, deslocamento para cima e para baixo com a roda e o botão central do rato (o botão da roda). No Microsoft® Windows®, a função atribuída ao botão central depende da aplicação que estiver a usar. No SO Macintosh® X, o botão central geralmente não tem uma função, a menos que seja instalado o software.

3 Downloading the mouse software

English

Downloading the mouse software

For enhanced mouse features, including Document Flip and side-to-side scrolling, and for changing button assignments, please download the free mouse software at www.logitech.com/downloads.

After installing the mouse software, launch it by double-clicking the keyboard-mouse logo in the Windows® System Tray or the Logitech® logo in Macintosh® System Preferences.

Español

Descarga de software del ratón

Si quiere utilizar funciones avanzadas del ratón tales como la de cambio rápido de documentos o desplazamiento horizontal, así como para poder cambiar asignaciones de botones, descargue el software de ratón gratuito disponible en www.logitech.com/downloads.

Después de instalar el software de ratón, inicie el haciendo doble clic en el logotipo de teclado/ratón (situado en la bandeja del sistema de Windows®) o el logotipo de Logitech (en Preferencias del Sistema de Macintosh®).

Français

Téléchargement du logiciel de la souris

Pour bénéficier des fonctionnalités avancées de la souris, notamment le défilement latéral et le changement rapide de document, ainsi que pour changer l'affectation des boutons, téléchargez le logiciel pour souris gratuit, à partir de la page www.logitech.com/downloads.

Après avoir installé le logiciel de la souris, vous pouvez le lancer en cliquant deux fois sur le logo clavier-souris dans la barre d'état système sous Windows® ou sur le logo Logitech® dans les Préférences système sous Macintosh®.

Português

Transferir o software do rato

Para obter as funcionalidades avançadas do rato, incluindo Rotação de Documentos e deslocamento horizontal, e para alterar as atribuições do botão, transfira o software do rato gratuito em www.logitech.com/downloads.

Depois de instalar o software do rato, inicie o software, fazendo duplo clique no logotipo do teclado-rato no Tabuleiro de Sistema do Windows® ou no logotipo da Logitech em Macintosh® System Preferences.

+ We're here to help / Asistencia / Nous sommes là pour vous aider. / Estamos cá para o ajudar

www.logitech.com/support

support@logitech.com

English

FAQs
Troubleshooting
Downloads
Forums
Registration
Warranty information

Français

Questions fréquentes
Dépannage
Téléchargements
Forums
Inscription
Informations sur la garantie

Español

Preguntas más habituales
Resolución de problemas
Descargas
Foros
Registro
Información de garantía

Português

Perguntas Mais Frequentes
Resolução de problemas
Transferências
Fóruns
Registo
Informação da garantia

Federal Communication Commission Interference Statement

This equipment has been tested and found to comply with the limits for a Class B digital device, pursuant to Part 15 of the FCC Rules. These limits are designed to provide reasonable protection against harmful interference in a residential installation. This equipment generates, uses and can radiate radio frequency energy and, if not installed and used in accordance with the instructions, may cause harmful interference to radio communications. However, there is no guarantee that interference will not occur in a particular installation. If this equipment does cause harmful interference to radio or television reception, which can be determined by turning the equipment off and on, the user is encouraged to try to correct the interference by one of the following measures:

- Reorient or relocate the receiving antenna.
 - Increase the separation between the equipment and receiver.
 - Connect the equipment into an outlet on a circuit different from that to which the receiver is connected.
 - Consult the dealer or an experienced radio/TV technician for help.
- FCC Caution: Any changes or modifications not expressly approved by the party responsible for compliance could void the user's authority to operate this equipment. This device complies with Part 15 of the FCC Rules. Operation is subject to the following two conditions: (1) This device may not cause harmful interference, and (2) this device must accept any interference received, including interference that may cause undesired operation.

Industry Canada Statement

This device complies with RSS-210 of the Industry Canada Rules. Operation is subject to the following two conditions:
1) this device may not cause interference and
2) this device must accept any interference, including interference that may cause undesired operation of the device.

United States +1 646-454-3200

Argentina +00800 555 3284

Brasil +0800 891 4173

Canada +1 416 207 2782

Chile 1230 020 5484

Latin America +55 11 3444 6761

Mexico 001 800 578 9619