



Logitech  
M-RCQ142  
**Cordless Laser**  
Mouse for Notebooks  
with Bluetooth® Technology

Installation

1

**English System Requirements. PC:** Windows® XP or Windows Vista™ computer with Bluetooth® wireless technology, Bluetooth® software (Broadcom/Widcomm Bluetooth® BTW 1.4.2.21 or above, or Windows® XP SP2, or Windows® XP 64); CD-ROM drive. **Macintosh®:** OS X 10.2.8+; Macintosh® computer with Bluetooth® wireless technology. Logitech® SetPoint™ software does not support Macintosh®. Support is provided by Macintosh® OS X software. The scroll wheel button on the mouse cannot be reassigned when used with a Macintosh computer.

**Español System Requirements. PC:** Windows® XP or Windows Vista™ computer with Bluetooth® wireless technology, Bluetooth® software (Broadcom/Widcomm Bluetooth® BTW 1.4.2.21 or above, or Windows® XP SP2, or Windows® XP 64); CD-ROM drive. **Macintosh®:** OS X 10.2.8+; Macintosh® computer with Bluetooth® wireless technology. Logitech® SetPoint™ software does not support Macintosh®. Support is provided by Macintosh® OS X software. The scroll wheel button on the mouse cannot be reassigned when used with a Macintosh computer.

**Français System Requirements. PC:** Windows® XP or Windows Vista™ computer with Bluetooth® wireless technology, Bluetooth® software (Broadcom/Widcomm Bluetooth® BTW 1.4.2.21 or above, or Windows® XP SP2, or Windows® XP 64); CD-ROM drive. **Macintosh®:** OS X 10.2.8+; Macintosh® computer with Bluetooth® wireless technology. Logitech® SetPoint™ software does not support Macintosh®. Support is provided by Macintosh® OS X software. The scroll wheel button on the mouse cannot be reassigned when used with a Macintosh computer.

**Português System Requirements. PC:** Windows® XP or Windows Vista™ computer with Bluetooth® wireless technology, Bluetooth® software (Broadcom/Widcomm Bluetooth® BTW 1.4.2.21 or above, or Windows® XP SP2, or Windows® XP 64); CD-ROM drive. **Macintosh®:** OS X 10.2.8+; Macintosh® computer with Bluetooth® wireless technology. Logitech® SetPoint™ software does not support Macintosh®. Support is provided by Macintosh® OS X software. The scroll wheel button on the mouse cannot be reassigned when used with a Macintosh computer.

2

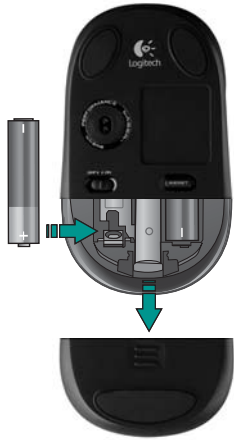
**English Getting Ready.** The V470 Cordless Laser Mouse communicates with the Bluetooth wireless technology built into your Bluetooth-enabled computer. Be sure the Bluetooth wireless feature is enabled on your computer. Refer to the documentation accompanying your computer for information on how to setup and enable this feature.

**Español Getting Ready.** The V470 Cordless Laser Mouse communicates with the Bluetooth wireless technology built into your Bluetooth-enabled computer. Be sure the Bluetooth wireless feature is enabled on your computer. Refer to the documentation accompanying your computer for information on how to setup and enable this feature.

**Français Getting Ready.** The V470 Cordless Laser Mouse communicates with the Bluetooth wireless technology built into your Bluetooth-enabled computer. Be sure the Bluetooth wireless feature is enabled on your computer. Refer to the documentation accompanying your computer for information on how to setup and enable this feature.

**Português Getting Ready.** The V470 Cordless Laser Mouse communicates with the Bluetooth wireless technology built into your Bluetooth-enabled computer. Be sure the Bluetooth wireless feature is enabled on your computer. Refer to the documentation accompanying your computer for information on how to setup and enable this feature.

3



**English** Install the AA alkaline batteries. The LED will blink red when the batteries need to be replaced.

**Español** Install the AA alkaline batteries. The LED will blink red when the batteries need to be replaced.

**Français** Install the AA alkaline batteries. The LED will blink red when the batteries need to be replaced.

**Português** Install the AA alkaline batteries. The LED will blink red when the batteries need to be replaced.

4



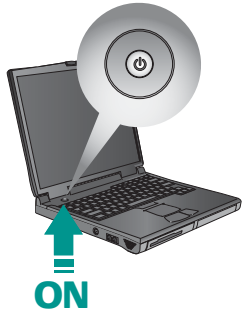
**English Turn on mouse.** Slide the switch on the bottom of the mouse. When you are traveling with your mouse or will not be using it for a long period of time, turn the mouse off to extend battery life.

**Español Turn on mouse.** Slide the switch on the bottom of the mouse. When you are traveling with your mouse or will not be using it for a long period of time, turn the mouse off to extend battery life.

**Français Turn on mouse.** Slide the switch on the bottom of the mouse. When you are traveling with your mouse or will not be using it for a long period of time, turn the mouse off to extend battery life.

**Português Turn on mouse.** Slide the switch on the bottom of the mouse. When you are traveling with your mouse or will not be using it for a long period of time, turn the mouse off to extend battery life.

5



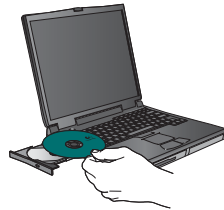
**English** Turn ON computer.

**Français** Mettez l'ordinateur sous tension.

**Español** Encienda el ordenador.

**Português** Ligue o computador.

6



**English** Install the Software (Windows Only). Install the Logitech SetPoint™ software. It includes the Logitech Bluetooth Connection Assistant and a control panel for reassigning the buttons and adjusting the cursor speed.

**Français** Install the Software (Windows Only). Install the Logitech SetPoint™ software. It includes the Logitech Bluetooth Connection Assistant and a control panel for reassigning the buttons and adjusting the cursor speed.

**Español** Install the Software (Windows Only). Install the Logitech SetPoint™ software. It includes the Logitech Bluetooth Connection Assistant and a control panel for reassigning the buttons and adjusting the cursor speed.

**Português** Install the Software (Windows Only). Install the Logitech SetPoint™ software. It includes the Logitech Bluetooth Connection Assistant and a control panel for reassigning the buttons and adjusting the cursor speed.

7



**English Connect to Bluetooth.** Press the Connect button on the bottom of the mouse to enter discovery mode. The blue LED on top of the mouse will blink while in discovery mode, and glow steady for 2 seconds when connection is established. **Windows:** The Logitech Bluetooth Connection Assistant runs automatically at the end of the software installation process. Follow the on-screen prompts to connect the mouse to the PC. If SetPoint software is not installed, use the Bluetooth setup wizard included with your computer to establish a connection. **Macintosh:** Open **System Preferences Control Panel**. 2. Select **Bluetooth** under **Hardware**. 3. Select **Devices** followed by **Setup New Device**. 4. Follow on-screen instructions.

**Français Connect to Bluetooth.** Press the Connect button on the bottom of the mouse to enter discovery mode. The blue LED on top of the mouse will blink while in discovery mode, and glow steady for 2 seconds when connection is established. **Windows:** The Logitech Bluetooth Connection Assistant runs automatically at the end of the software installation process. Follow the on-screen prompts to connect the mouse to the PC. If SetPoint software is not installed, use the Bluetooth setup wizard included with your computer to establish a connection. **Macintosh:** Open **System Preferences Control Panel**. 2. Select **Bluetooth** under **Hardware**. 3. Select **Devices** followed by **Setup New Device**. 4. Follow on-screen instructions.

**Español Connect to Bluetooth.** Press the Connect button on the bottom of the mouse to enter discovery mode. The blue LED on top of the mouse will blink while in discovery mode, and glow steady for 2 seconds when connection is established. **Windows:** The Logitech Bluetooth Connection Assistant runs automatically at the end of the software installation process. Follow the on-screen prompts to connect the mouse to the PC. If SetPoint software is not installed, use the Bluetooth setup wizard included with your computer to establish a connection. **Macintosh:** Open **System Preferences Control Panel**. 2. Select **Bluetooth** under **Hardware**. 3. Select **Devices** followed by **Setup New Device**. 4. Follow on-screen instructions.

**Português Connect to Bluetooth.** Press the Connect button on the bottom of the mouse to enter discovery mode. The blue LED on top of the mouse will blink while in discovery mode, and glow steady for 2 seconds when connection is established. **Windows:** The Logitech Bluetooth Connection Assistant runs automatically at the end of the software installation process. Follow the on-screen prompts to connect the mouse to the PC. If SetPoint software is not installed, use the Bluetooth setup wizard included with your computer to establish a connection. **Macintosh:** Open **System Preferences Control Panel**. 2. Select **Bluetooth** under **Hardware**. 3. Select **Devices** followed by **Setup New Device**. 4. Follow on-screen instructions.

**Federal Communication Commission Interference Statement**

This equipment has been tested and found to comply with the limits for a Class B digital device, pursuant to Part 15 of the FCC Rules. These limits are designed to provide reasonable protection against harmful interference in a residential installation. This equipment generates, uses and can radiate radio frequency energy and, if not installed and used in accordance with the instructions, may cause harmful interference to radio communications. However, there is no guarantee that interference will not occur in a particular installation. If this equipment does cause harmful interference to radio or television reception, which can be determined by turning the equipment off and on, the user is encouraged to try to correct the interference by one of the following measures:

- Reorient or relocate the receiving antenna.
- Increase the separation between the equipment and receiver.
- Connect the equipment into an outlet on a circuit different from that to which the receiver is connected.
- Consult the dealer or an experienced radio/TV technician for help.

**FCC Caution:** Any changes or modifications not expressly approved by the party responsible for compliance could void the user's authority to operate this equipment.

This device complies with Part 15 of the FCC Rules. Operation is subject to the following two conditions: (1) This device may not cause harmful interference, and (2) this device must accept any interference received, including interference that may cause undesired operation. This equipment complies with FCC RF radiation exposure limits set forth for an uncontrolled environment. To maintain compliance with FCC RF exposure compliance requirements, please avoid direct contact to the transmitting antenna during transmitting.

**Industry Canada Statement**

This device complies with RSS-210 of the Industry Canada Rules. Operation is subject to the following two conditions: 1) this device may not cause interference and 2) this device must accept any interference, including interference that may cause undesired operation of the device

