

HARMONY®
Elite Plus
Elite Plus



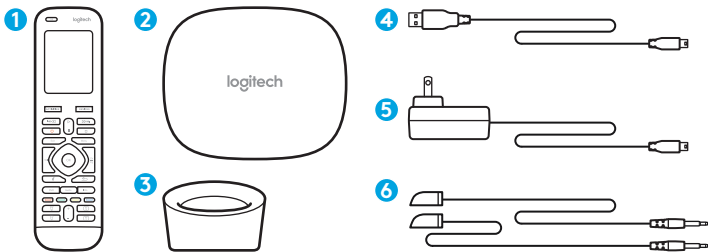
Setup Guide | Guide d'installation

Languages

English 4

Français 14

Package contents



1. Elite Plus

2. Harmony Hub

Controls devices via IR, *Bluetooth*[®], or Wi-Fi

3. Charging Station

4. USB cable

Set up hub via PC or Mac if access to mobile device is not available.

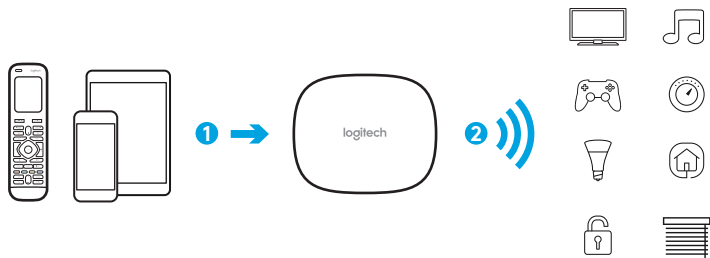
5. Power adapter

Provides power to the Harmony Hub

6. 2 IR mini blasters

Extend IR coverage when used in combination with the Harmony Hub

Congratulations on the purchase of Harmony Elite Plus



The Harmony Hub is the center of your Harmony system—always keep it powered on!

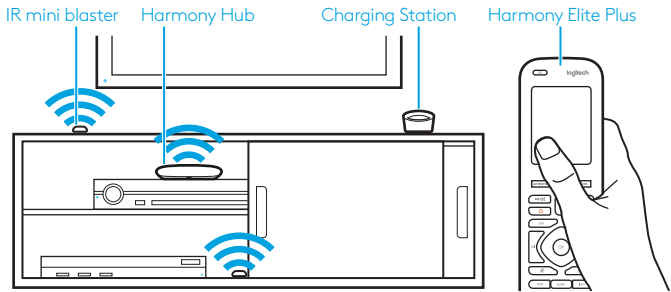
1. The hub receives commands from the remote or mobile app. The remote itself does not send commands directly to your devices.*
2. The hub sends commands to your audio video and home control devices in the form of *Bluetooth*, *Wi-Fi*, and infrared signals (*IR*).

*The remote can be configured to send *IR* signals directly to devices. By default, it will communicate to the hub using *RF* signals, as shown above.

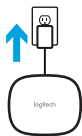
Lets get started

STEP 1

Position the Harmony Hub



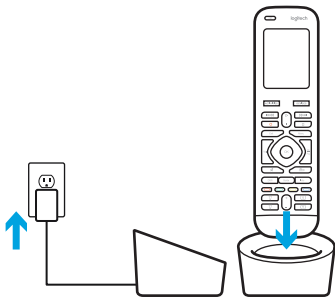
The Harmony Hub can be placed in any unobstructed location where IR signals can be transmitted to AV equipment or it can be placed behind closed cabinets with the IR mini blaster transmitters connected to the hub and positioned as shown above.



Once plugged in, the hub takes approx. 30 seconds to power up. The LED will glow red when plugged in. Once it has been successfully paired and has joined your home network, it will glow green (Step 3).

STEP 2

Charge your Remote



Plug in the charging station and place the remote in it. Keep the remote in the charging station until setup is complete. The charging station should be in the same room as your hub to optimize communication between the remote and the hub.

STEP 3

Install the Harmony App



- Visit the Apple App Store or Google Play and install the **Harmony** App.
- Launch the app, select the Set Up New Remote button, and follow setup instructions.
- Alternatively, you can set up your Elite Plus using a PC/Mac. Visit setup.myharmony.com to download the Harmony desktop setup software.

Note: If you have an iPhone 4, iPad 1 or iPad 2, or an Android device that does not support *Bluetooth*, please visit setup.myharmony.com on a computer to connect the hub to your Wi-Fi network before beginning Step 3 of mobile setup.

For more detailed instructions and product info, please visit support.myharmony.com/elite-plus

The remainder of setup will be done using your mobile device. See next section for an overview of what to expect.

Mobile App Setup Overview

After you download and open the Harmony Mobile app, you will be guided through the following steps:

- **Connect hub to Wi-Fi.** Using your mobile device's *Bluetooth*, connect your hub to your wireless network.
- **Create a Harmony account.**
- **Scan your Wi-Fi network** for devices that can be controlled by Harmony (e.g. Roku, Sonos, hue, Smart TVs).
- **Add home entertainment devices** for additional devices not found during Wi-Fi scan (e.g. TV, cable box, AVR, game console, Blu-ray player).
- **Add home control devices.** Harmony supports various devices such as select lights, locks, thermostats and home control platforms. See Home Controls Explained section for further detail.
- **Create Activities.** You'll be guided through creating Activities such as Watch TV, Listen to Music, and Play Xbox. See One-Touch Activities section for further details.
- **Software Update:** Your remote's software may need to be updated. If necessary (you will be informed after completing mobile setup), simply keep your remote in the cradle. The amount of time remaining to complete the update will be displayed on the remote's screen.

Home Controls Explained

Your Harmony Elite Plus supports a variety of devices such as lights, light switches, locks, thermostats, and blinds. Harmony Elite Plus also connects to other home control platforms to access additional devices supported by these solutions. The list of supported devices includes:*



Nest Learning Thermostats, Honeywell Wi-Fi Thermostats



Philips hue Lights, Lutron Caséta Wireless Lights, Lifx



Lutron Serena Window Shades



SmartThings, PÉQ

*The list of Harmony-compatible devices is always growing. Visit myharmony.com/compatibility for the most up-to-date list of compatible brands, devices, and model numbers. Device compatibility is subject to change without notice.

Get creative—Make it Home!



Add a **Good Night** activity that turns off all your lights, lowers your blinds and thermostat, locks your doors!

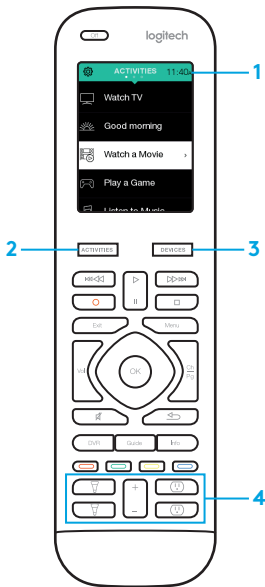


Set the perfect **Dinner Party** mood with one touch—launch your favorite music video, set the lights to vibrant colors and turn up the heat.



One touch dims the lights, turns on rejuvenating music at just the perfect volume and it's **Relax Time**.

How to use your remote



1. Clock/Battery

Tap to toggle between clock and battery meter. By default, the clock will be displayed. If battery drops below 20%, the battery meter will automatically be displayed.

2. Activities

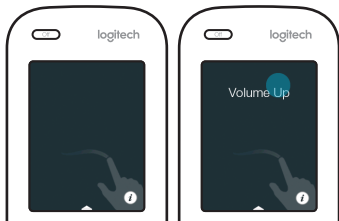
Tap the Activities “soft button” to access Activities Home Screen. You will see a list of all your Activities.

3. Devices

Tap the Devices “soft button” to access Devices Home Screen. You will see a list of all your Home Entertainment and Home Control devices.

4. Button mapping

Harmony Elite Plus includes special buttons that can be used to control supported Home Control devices. For example you can map a button to turn your hue lights on and off and use the +/- button to adjust the bulb's brightness.



Gestures & Gesture Hints

When an Activity is running, swiping down from the top of any screen will display the gesture screen. Here, simple taps and swipes will perform functions related to the current Activity such as changing the volume, skipping forward or backward, pausing and playing, etc. Tap the button at the top to see what gestures are available for each Activity.



www.logitech.com

support.myharmony.com/elite-plus

© 2015 Logitech. All rights reserved. Logitech, the Logitech logo, and other Logitech marks are owned by Logitech and may be registered. All other trademarks are the property of their respective owners. Logitech assumes no responsibility for any errors that may appear in this manual. Information contained herein is subject to change without notice.

© 2015 Logitech. Tous droits réservés. Logitech, le logo Logitech et les autres marques Logitech sont la propriété exclusive de Logitech et sont susceptibles d'être des marques déposées. Toutes les autres marques sont la propriété exclusive de leurs détenteurs respectifs. Logitech décline toute responsabilité en cas d'erreurs dans ce manuel. Les informations énoncées dans le présent document peuvent faire l'objet de modifications sans avis préalable.

620-006751.002