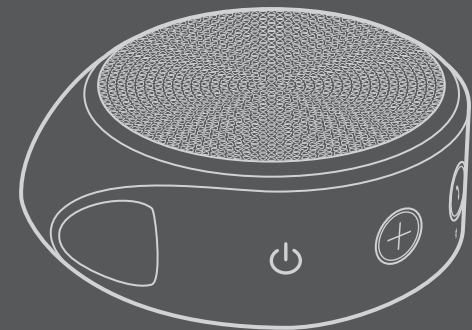
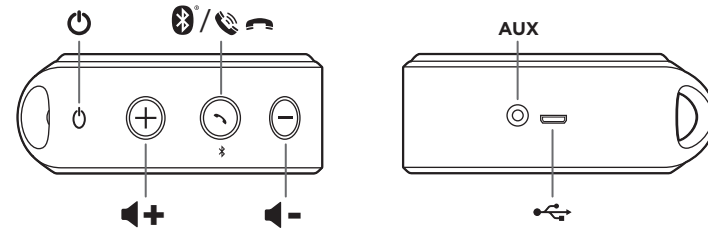
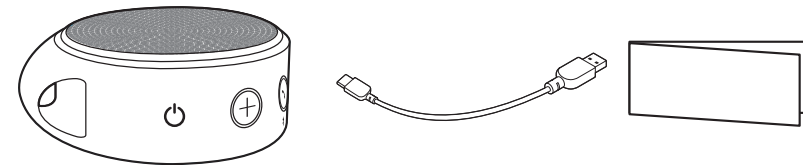


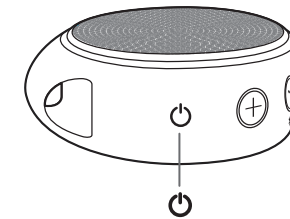
Logitech



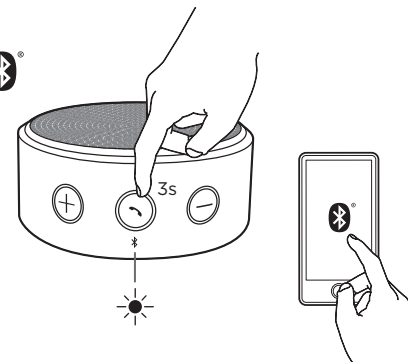
S100



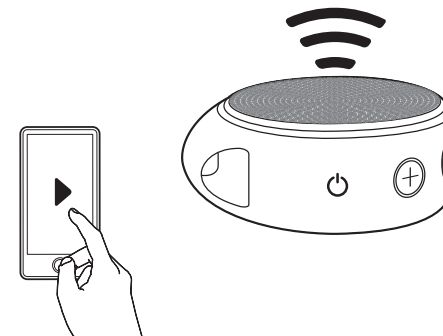
1



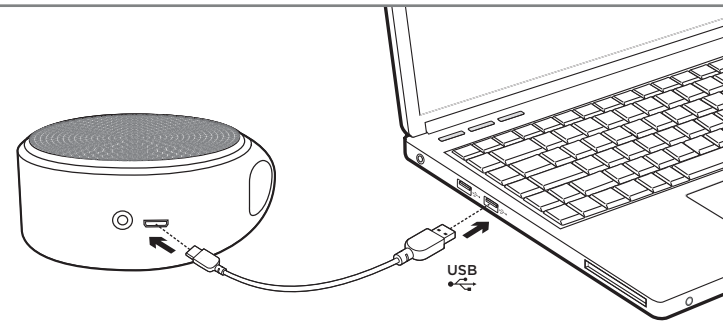
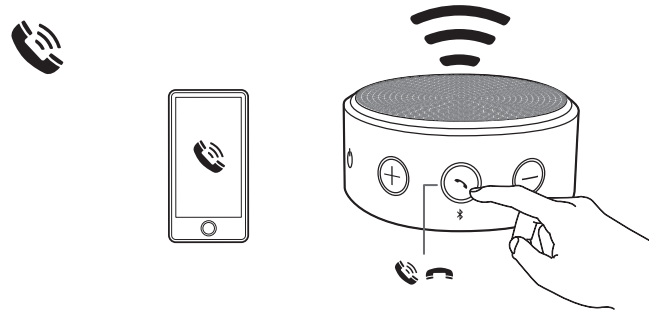
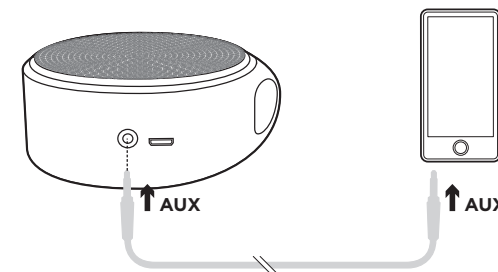
2



3.1



3.2



Logitech.com/S100/support

Logitech

Logitech assumes no responsibility for any errors that may appear in this manual. Information contained herein is subject to change without notice.

Logitech assumes no responsibility for any errors that may appear in this manual. Information contained herein is subject to change without notice.

2-year limited hardware warranty

© 2013 Logitech. Logitech, the Logitech logo, and other Logitech marks are owned by Logitech and may be registered. The Bluetooth word mark and logos are registered trademarks owned by Bluetooth SIG, Inc. and any use of such marks by Logitech is under license. All other trademarks are property of their respective owners. Made in China.

Garantie matérielle limitée de 2 ans

© 2013 Logitech. Logitech, le logo Logitech et les autres marques Logitech sont la propriété de Logitech et peuvent être déposées. La marque verbale et les logos Bluetooth sont des marques commerciales déposées appartenant à Bluetooth SIG, Inc. et toute utilisation de ces marques par Logitech sous licence. Toutes les autres marques sont la propriété de leurs propriétaires respectifs. Fabriqué en Chine.

620-005667 002