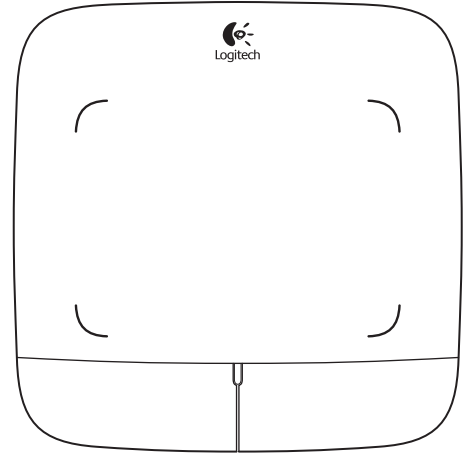


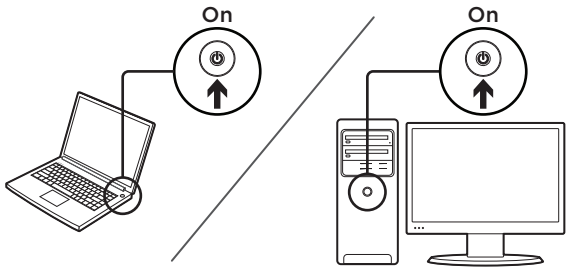
Getting started with Logitech® Wireless Touchpad



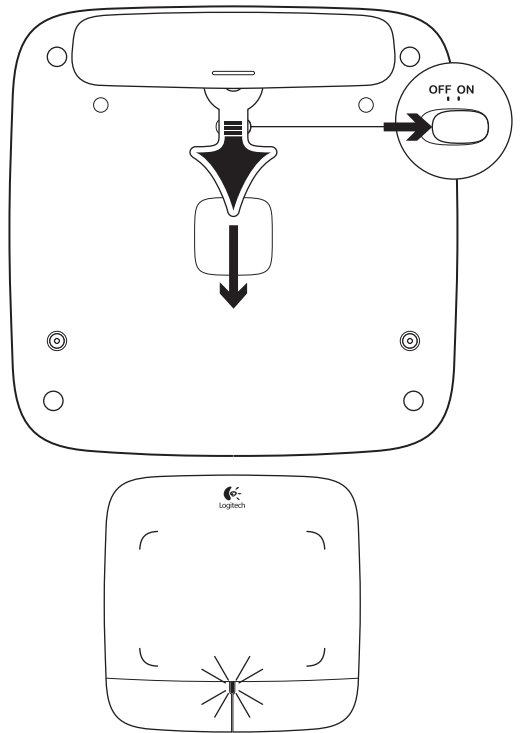
unifying™



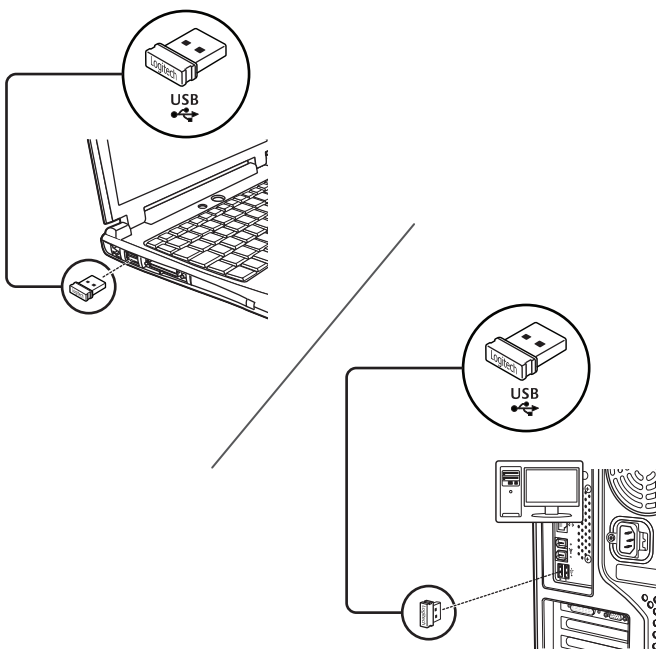
1



2



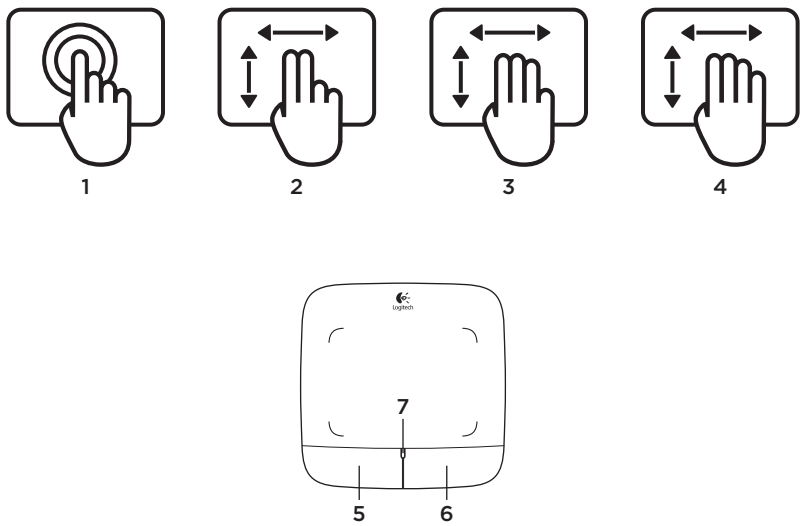
3



www.logitech.com

© 2011 Logitech. All rights reserved. Logitech, the Logitech logo, and other Logitech marks are owned by Logitech and may be registered. Microsoft, Windows, and the Windows logo are trademarks of the Microsoft group of companies. All other trademarks are the property of their respective owners. Logitech assumes no responsibility for any errors that may appear in this manual. Information contained herein is subject to change without notice.

620-003476.003



Touchpad gestures

- One finger slide or tap**—point, move, click
 - **Pointer movement:** Touch and slide finger to move screen pointer.
 - **Left click:** Tap finger once for left-button mouse click.
 - **Double click:** Tap finger twice (rapidly) for left-button, double click.
 - **Drag and drop:** Tap, and then tap, hold, and slide finger to drag a screen object. Lift finger to release.
- Two finger swipe**—vertical and horizontal scrolling
 - **Vertical scrolling:** Swipe two fingers up or down. Flick (quick swipe) for continuous scrolling.
 - **Horizontal scrolling¹:** Swipe two fingers left or right.
- Three finger swipe**—page navigation
 - **Page up and down²:** Swipe three fingers up to go up one page. Swipe down to go down one page.
 - **Web page forward and back:** Swipe three fingers right to go forward one page. Swipe left to go back one page.
- Four finger swipe**—switch, minimize/restore, and snap
 - **Application switch:** Swipe four fingers up to display window of open applications (similar to Alt-Tab).
 - **Minimize/restore windows:** Swipe four fingers down to minimize all open windows and to display the desktop. Swipe down again to restore all windows
 - **Windows[®] 7 Snap:** Swipe four fingers left to move and snap a window to the left screen edge. Swipe right to move and snap a window to the right screen edge.

¹ Horizontal scrolling is widely supported, but if it doesn't work in your application, download the free Logitech SetPoint[®] Software at www.logitech.com/downloads, and try again.

² Three finger swipe (page up and down) functions like the Page up and Page down keys on a keyboard. In some applications, these keys don't always display the next page up or down when pressed.

Touchpad features

5. Left button click³

Press the left button for left-button mouse click.

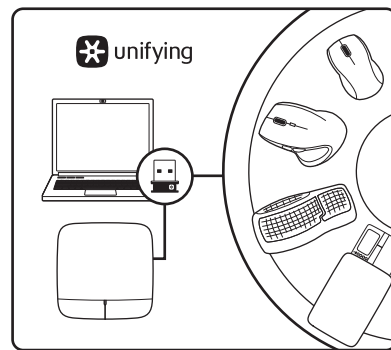
6. Right button click³

Press the right button for right-button mouse click.

7. Battery LED

When the battery LED is green, the touchpad is on. When the LED turns red, replace the batteries.

³ To change button assignments, download the free Logitech SetPoint[®] Software at www.logitech.com/downloads. This software also allows you to disable/enable touchpad gestures.



The Logitech[®] Unifying receiver

Plug it. Forget it. Add to it.

Your new Logitech product ships with a Logitech[®] Unifying receiver. Did you know you can add a compatible Logitech wireless device that uses the same receiver as your current Logitech Unifying product?

Are you Unifying-ready?

If you have a Logitech wireless device that's Unifying-ready, you can pair it with additional Unifying devices. Just look for the orange Unifying logo on the new device or its packaging. Build your ideal combo. Add something. Replace something. It's easy, and you'll use only one USB port for up to six devices.

Getting started is easy

If you're ready to pair your device(s) via Unifying, here's what you need to do:

1. Make sure your Unifying receiver is plugged in.
2. If you haven't already, download the Logitech[®] Unifying software from www.logitech.com/unifying.
3. Start the Unifying software^{*} and follow the onscreen instructions to pair the new wireless device with your existing Unifying receiver.

^{*}Go to Start / All Programs / Logitech / Unifying / Logitech Unifying Software

Help with setup

- Is the touchpad powered on? If not, move the On/Off slider to the On position.
- Is the Unifying receiver securely plugged into a computer USB port? Try changing USB ports.
- If the Unifying receiver is plugged into a USB hub, try plugging it directly into a USB port on your computer.
- Did you pull the battery tab? Check the orientation of the batteries inside the touchpad, or replace the batteries. The touchpad uses two AA alkaline batteries.
- Remove metallic objects between the touchpad and the Unifying receiver.
- Try moving the Unifying receiver to a USB port closer to the touchpad.
- Try reconnecting the touchpad and Unifying receiver using the Logitech Unifying software. (Refer to the Unifying section in this guide. The Unifying software is not required for touchpad gestures.)

www.logitech.com/support



United States

+1 646-454-3200

What do you think?

Please take a minute to tell us. Thank you for purchasing our product.

www.logitech.com/ithink



M/N:C-U0007

Rating: 5V = 100mA
 FCC ID: JNZCU0007
 IC: 4418A-CU0007
 CNC: C-8941
 CFT: RCPLOCU10-1356
 Approval No.: ETA-418/2010/WRLO
 CMIIT ID: 2010DJ0355



14418/POSTEL/2010
2100



MADE IN CHINA

M/N:C-U0008

Rating: 5V = 100mA
 FCC ID: JNZCU0008
 IC: 4418A-CU0008
 CNC: C-9341
 CFT: RCPLOCU11-0321
 SUBTEL: 2217
 Approval No.: ETA-1115/2011/WRLO
 CMIIT ID: 2011DJ1853



19088/SDPPI/2011
2100



MADE IN CHINA