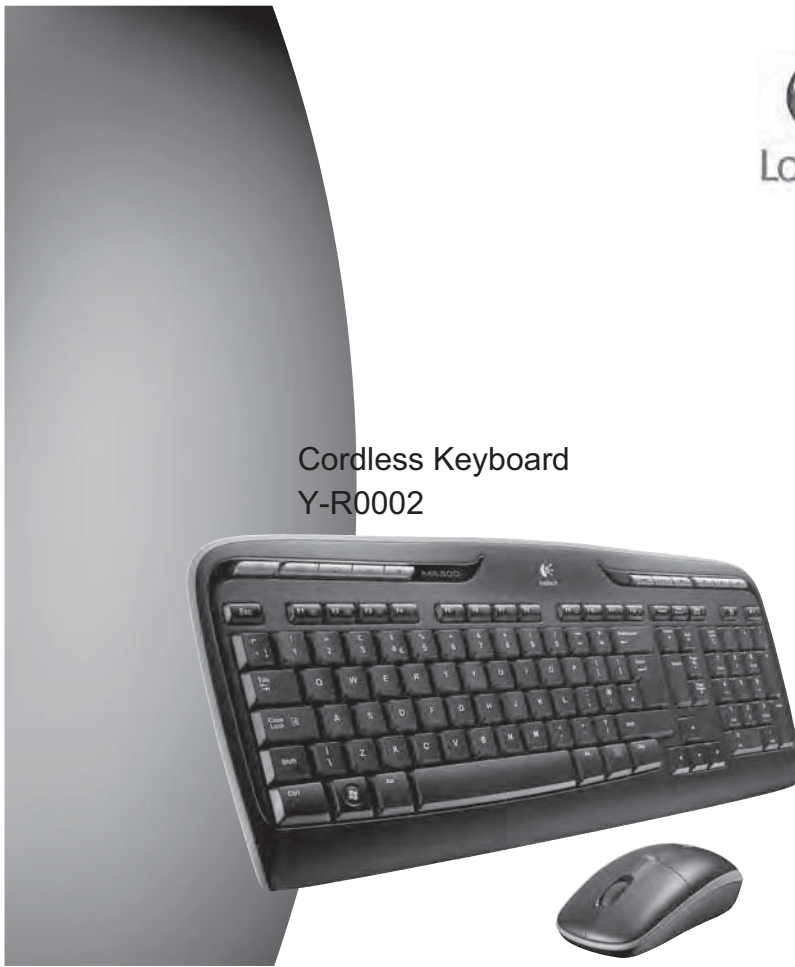




Cordless Keyboard
Y-R0002



Contents

English	Setup, 6	Features and troubleshooting, 14
По-русски	Настройка, 6	Функции и устранение неполадок, 25
Po polsku	Instalacja, 6	Funkcje i rozwiązywanie problemów, 36
Українська	Налаштування, 6	Функції та усунення несправностей, 47
Magyar	Üzembe helyezés, 6	Funkciók és hibaelhárítás, 58
Slovenčina	Inštalácia, 6	Funkcie a riešenie problémov, 69
Български	Настройка, 6	Функции и отстраняване на неизправности, 80
Română	Instalare, 6	Caracteristici și depanare, 91

Contents

Hrvatski	Postavljanje, 6	Značajke i otklanjanje poteškoća, 102
Srpski	Podешavanje, 6	Funkcije i rešavanje problema, 113
Slovenščina	Namestitev, 6	Funkcije in odpravljanje težav, 124
Eesti	Seadistamine, 6	Funktsioonid ja tõrkeotsing, 135
Latviski	Uzstādīšana, 6	Funkcijas un problēmu novēršana, 146
Lietuvių	Sąranka, 6	Funkcijos ir trikčių šalinimas, 157
Česká verze	Instalace, 6	Funkce a odstraňování problémů, 168



www.logitech.com/support, 179

Thank you!

Podziękowanie! Ďakujeme!

Дякуємо! Благодарим Вас!

Köszönjük!

Vă mulțumim! Paldies!

Zahvala! Poděkování!

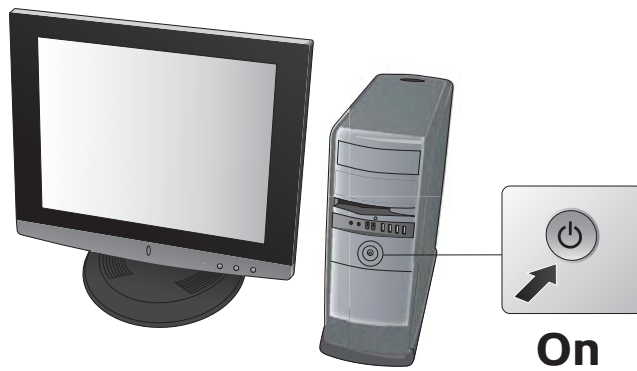
Tänname!

Hvala! Děkojame!

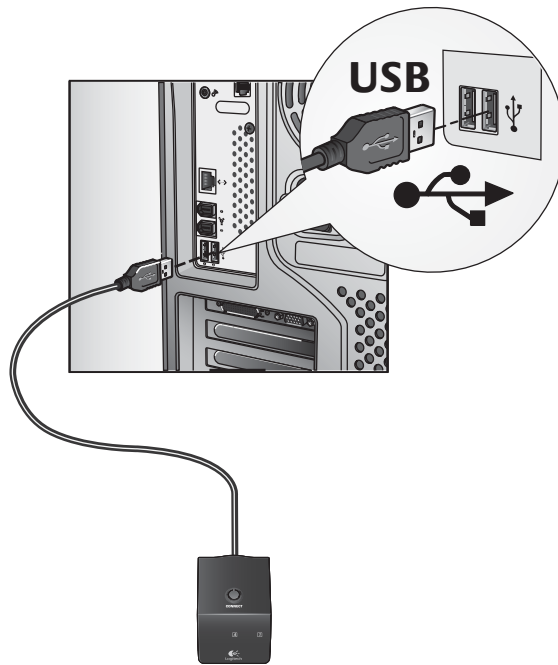
Logitech® Wireless Desktop® MX300



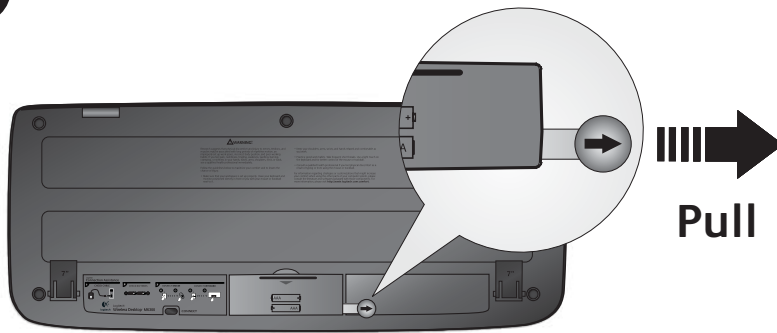
1



2



3



По-русски ПОТЯНИТЕ

Po polsku POCIĄGNIJ

Українська ФІЙМ

Magyar HÚZZA

Slovenščina POTAHNUT

Български ДРЪПНЕТЕ

Română TRAGEȚI

Hrvatski PUVUCITE

Srpski PUVUCITE

Slovenščina POVLECITEKLOPITE

Eesti TÕMMAKE

Latviski PAVILKT

Lietuvių IŠTRAUKITE

Česká verze ZATÁHNĚTE



5



По-русски ПОТЯНИТЕ

Po polsku POCIĄGNIJ

Українська ФИЙМ

Magyar HÚZZA

Slovenčina POTAHNUT

Български ДРЪПНЕТЕ

Română TRAGEȚI

Hrvatski POVUCITE

Srpski POVUCITE

Slovenščina POVLECI TEKLOPITE

Eesti TÕMMAKE

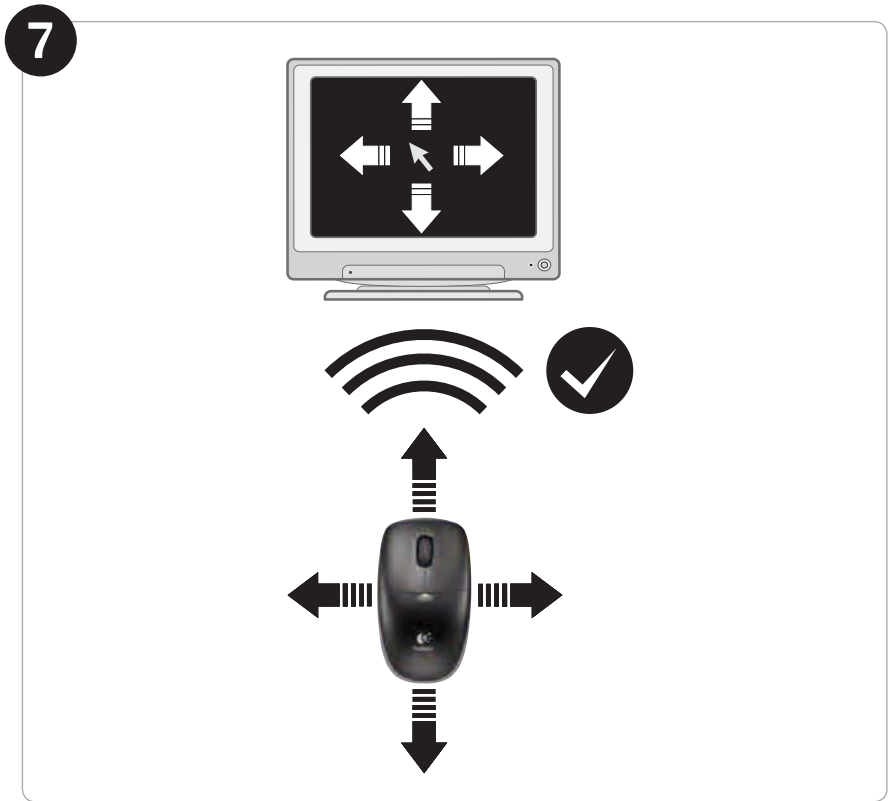
Latviski PAVILKT

Lietuvių IŠTRAUKITE

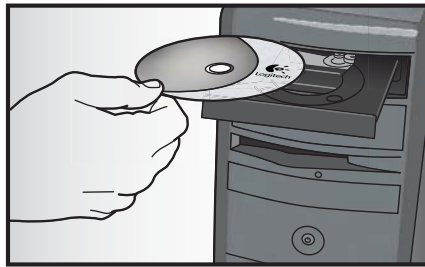
Česká verze ZATÁHNĚTE

6





8



English



Keyboard features: hot keys



To enjoy **all** the features of your keyboard or to customize it to suit your needs, please install the Logitech® SetPoint™ Software that comes with your product.

1. **Logitech application switcher**
2. **Internet zone**
 - a. Email application
 - b. Internet browser
 - c. Internet search engine
 - d. Messenger
3. **Multimedia navigation**
 - a. Previous track
 - b. Play/pause track
 - c. Next track
4. **Volume zone**
 - a. Mute volume
 - b. Volume down
 - c. Volume up
5. **Convenience zone**
 - a. Windows® calculator
 - b. Battery status check
(See **Battery management** for more information.)



1. **Fn** key (for use with F-keys)
2. **Productivity zone**
 - Fn+F1** Launches document application
 - Fn+F2** Launches spreadsheet application
 - Fn+F3** Launches presentation application
 - Fn+F4** Launches calendar

3. **Favorites zone**

Fn+F5 to **F8** program your favorite application, folder, or web site with a long, simultaneous press of **Fn** and the corresponding **F5**, **F6**, **F7**, or **F8** key (just like the presets of a car radio).

Keyboard features: F-keys



To enjoy **all** the features of your keyboard or to customize it to suit your needs, please install the Logitech® SetPoint™ Software that comes with your product.



User-friendly enhanced F-keys let you easily launch applications or control your music. To use the enhanced functions (gray icons), press the **Fn** key and the **F-Key** you want to use simultaneously.



4. Internet zone

- Fn+F9** Save file
- Fn+F10** Undo last operation
- Fn+F11** Redo last operation
- Fn+F12** Opens/closes CD-DVD tray

5. Miscellaneous


- Fn+ Print Screen:** Contextual menu
- Fn+Pause/Break:** Scroll lock
- Fn+Battery status check:** PC sleep mode

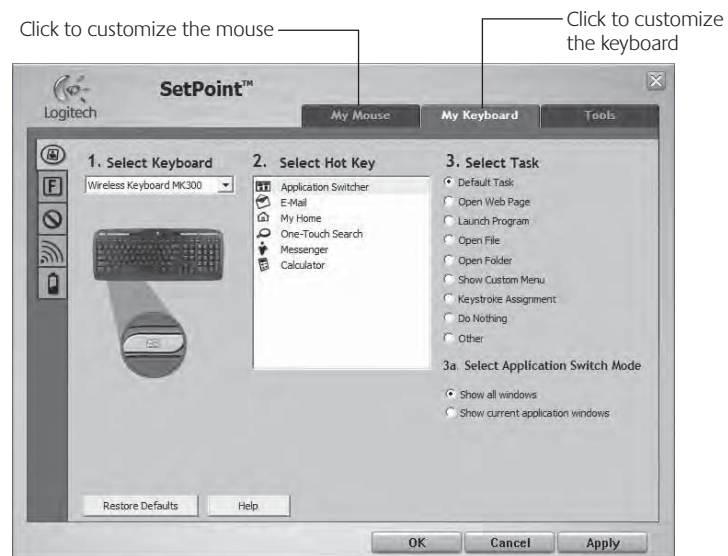
Mouse features: buttons and scrolling

1. Left click
2. Right click
3. Scroll wheel – Use SetPoint software to set your preferred speed and acceleration. (See **Customizing the keyboard and mouse**.)
4. Battery-indicator light – The LED glows green for 10 seconds when the mouse is powered on. The LED blinks red when battery level drops below 10%.
5. Power switch – Slide the switch right to power up the mouse.
6. Connect button – See **Troubleshooting** for information about usage.

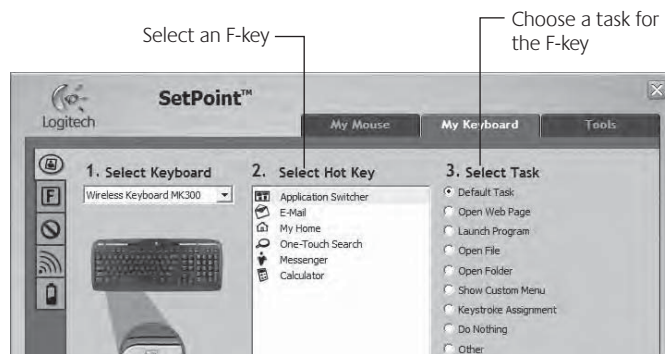


Customizing the keyboard and mouse

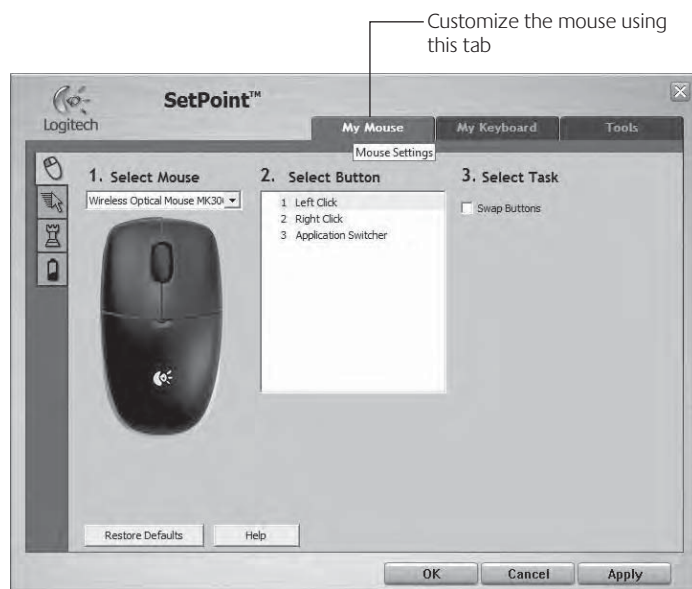
1. Double-click the **Mouse and Keyboard Settings** icon  on the Windows® desktop to make changes.
2. To customize the keyboard, click the **My Keyboard** tab. For the mouse, click the **My Mouse** tab.



3. For either the keyboard or mouse, a series of tabs is shown on the left.
4. Choose a tab, such as the keyboard **F-key Settings**. A picture of the keyboard is displayed showing F-keys (list 2) to which tasks can be assigned (list 3).
5. In the **2. Select F-key** list, highlight the F-key to be reassigned a task.
6. In the **3. Select Task** list, highlight the new task.
7. When you are done, click **OK** to save the new F-key assignments.

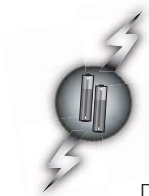


Keyboard F-key Settings tab



My Mouse tab

For more information about customizing your keyboard and mouse, please refer to the help system.



Battery management

Your keyboard has up to 15 months of battery life, and your mouse has up to 6 months. (Note that the mouse can work with *only* one battery.)

Battery sleep mode

Did you know that both your keyboard and mouse go into sleep mode after you stop using them for a few minutes? This feature helps limit battery usage. Both devices are up and running immediately once you begin using them again.

How to check the battery level for the keyboard (software required)

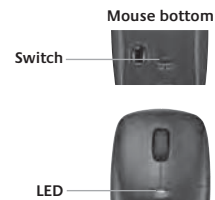
Press the **Battery Status Check** hotkey.



The SetPoint Software Keyboard Battery tab pops up. It shows the current battery level of the keyboard.

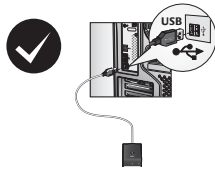


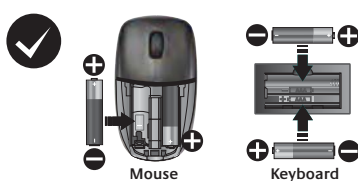
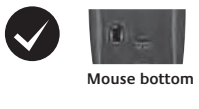
How to check the battery level for the mouse

- **Option 1:** Turn the mouse off, and then on using the **On/Off** slider switch on the bottom of the mouse. Look at the battery LED on the top case. If the LED glows green for 10 seconds, the batteries are good. If the LED blinks red, the battery level has dropped to 10%. (You still have a few days of battery usage left.)
- **Option 2:** Launch the SetPoint Software, and click the **Mouse Battery** tab to see the current battery level of the mouse.

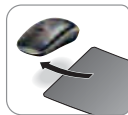


Troubleshooting

Keyboard and mouse are not working

-  **Check the cable connection.** Try changing USB ports.
-  **Move closer?** Try moving the keyboard or mouse closer to the receiver.
-  **Relocate the receiver.** Place the receiver away from electrical devices and avoid metallic surfaces.
-  **Check battery installation.** Also check the battery power of each device. (See **Battery management** for more information.)
-  **Is the mouse turned on?** On the mouse bottom, move the power slider switch **right** to turn on the mouse. The Battery LED on the mouse top case should light green for 10 seconds. (See **Battery management** for more information.)

Troubleshooting



Are you experiencing slow or jerky cursor movement?

Try the mouse on a different surface (e.g., deep, dark surfaces may affect how the cursor moves on the computer screen).

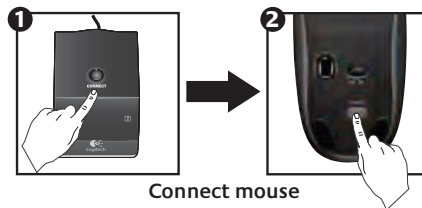


Establish a connection:

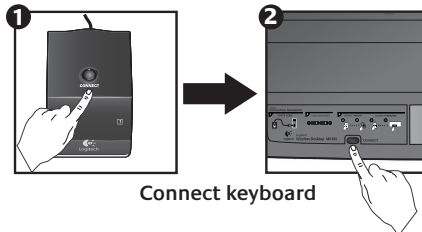
1. Press the **Connect** button on the receiver.
2. **QUICKLY** press the **Connect** button (half second) under each device. The mouse LED (top case) should blink.

For additional help, refer to the Customer Support telephone numbers on page 179.

Also visit www.logitech.com/comfort for more information about using your product, and for ergonomics.



Connect mouse



Connect keyboard



www.logitech.com/support



België / Belgique	Dutch: +32-(0)2 200 64 44; French: +32-(0)2 200 64 40	Russija	+7(495) 641 34 60
Česká Republika	+420 239 000 335	Schweiz / Suisse Svizzera	D +41-(0)22 761 40 12 F +41-(0)22 761 40 16 I +41-(0)22 761 40 20 E +41 (0)22 761 40 25
Danmark	+45-38 32 31 20	South Africa	0800 981 089
Deutschland	+49-(0)69-51 709 427	Suomi	+358-(0)9 725 191 08
España	+34 -91-275 45 88	Sverige	+46-(0)8-501 632 83
France	+33-(0)1-57 32 32 71	Türkiye	00800 44 882 5862
Ireland	+353-(0)1 524 50 80	United Arab Emirates	8000 441-4294
Italia	+39-02-91 48 30 31	United Kingdom	+44-(0)203-024-81 59
Magyarország	+36-177-74 853	European, Mid. East., & African Hq. Romanel s/Morges, Switzerland	English: +41-(0)22 761 40 25 Fax: +41-(0)21 863 54 02
Nederland	+31-(0)-20-200 84 33	Eastern Europe	English: 41-(0)22 761 40 25
Norge	+47-(0)24 159 579		
Österreich	+43-(0)1 206 091 026		
Polska	00800 441 17 19		
Portugal	+351-21-415 90 16		



www.logitech.com

© 2008 Logitech. All rights reserved. Logitech, the Logitech logo, and other Logitech marks are owned by Logitech and may be registered. All other trademarks are the property of their respective owners. Logitech assumes no responsibility for any errors that may appear in this manual. Information contained herein is subject to change without notice.

620-001235.002



This device complies with Part 15 of FCC rules. Operation is subject to the following two conditions:

- (1) This device may not cause harmful interference.
- (2) This device must accept any interference received, including interference that may cause undesired operations.

CAUTION: Any changes or modifications not expressly approved by the grantee of this device could void the user's authority to operate the equipment.

FEDERAL COMMUNICATIONS COMMISSION INTERFERENCE STATEMENT

This equipment has been tested and found to comply with the limits for a Class B digital device, pursuant to Part 15 of the FCC Rules. These limits are designed to provide reasonable protection against harmful interference in a residential installation. This equipment generates, uses and can radiate radio frequency energy and, if not installed and used in accordance with the instructions, may cause harmful interference to radio communications. However, there is no guarantee that interference will not occur in a particular installation. If this equipment does cause harmful interference to radio or television reception, which can be determined by turning the equipment off and on, the user is encouraged to try to correct the interference by one or more of the following measures:

- Reorient or relocate the receiving antenna.
- Increase the separation between the equipment and receiver.
- Connect the equipment into an outlet on a circuit different from that to which the receiver is connected.
- Consult the dealer or an experienced radio/TV technician for help.

RF exposure warning

This equipment must be installed and operated in accordance with provided instructions and the antenna(s) used for this transmitter must be installed to provide a separation distance of at least 20 cm from all persons and must not be co-located or operating in conjunction with any other antenna or transmitter. End-users and installers must be provide with antenna installation instructions and transmitter operating conditions for satisfying RF exposure compliance.