

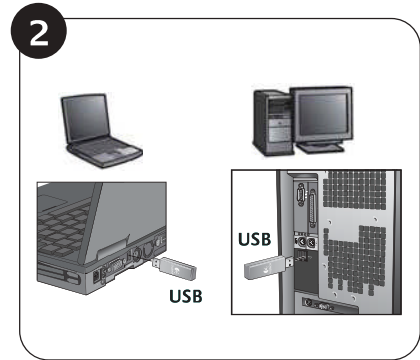
Y-R0009

Logitech™ Wireless Desktop MK320 Quick start guide and Hot keys usage



1

Remove the receiver from the mouse's bottom.
自滑鼠底部取下接收器。
从鼠标的底部解下接收器。
마우스 밑바닥에서 수신기 걸쇠를 풀어
여십시오.



2

3

拉出
Pull
잡아당깁니다

产品中有毒有害物质或元素的名称及含量
根據中國<<電子信息產品污染控制管理辦法>>

部件名称	鼠 标					
	铅 (Pb)	汞 (Hg)	镉 (Cd)	六价铬 (Cr(VI))	多氯联苯 (PCBs)	多氯二噁英 (PDCs)
电缆 Cable	X	0	0	0	0	0
电路板组件 PWAs	X	0	0	0	0	0
塑料外壳 Plastic enclosure	0	0	0	0	0	0
塑料部件 Plastic parts	0	0	0	0	0	0
金属部件 Metal parts	X	0	0	0	0	0

0 = 表示该有害物质在该部件所有均质材料中的含量均在 SJ/T11363-2006 标准规定的限量要求以下。
X = 表示该有害物质至少在该部件的某一均质的含量超出 SJ/T11363-2006 标准规定的限量要求。

表中所有“X”的所有部件都符合欧盟 RoHS 法规。
“欧盟议会和理事会 2002 年 1 月 27 日关于电子电气设备中限制使用某些有害物质的 2002/95/EC 号指令”
注：环保使用期限的参考值取决于产品正常工作的温度和湿度等条件

产品中有毒有害物质或元素的名称及含量
根據中國<<電子信息產品污染控制管理辦法>>

部件名称	接 收 器					
	铅 (Pb)	汞 (Hg)	镉 (Cd)	六价铬 (Cr(VI))	多氯联苯 (PCBs)	多氯二噁英 (PDCs)
电缆 Cable	X	0	0	0	0	0
电路板组件 PWAs	X	0	0	0	0	0
塑料外壳 Plastic enclosure	0	0	0	0	0	0
塑料部件 Plastic parts	0	0	0	0	0	0
金属部件 Metal parts	X	0	0	0	0	0

0 = 表示该有害物质在该部件所有均质材料中的含量均在 SJ/T11363-2006 标准规定的限量要求以下。
X = 表示该有害物质至少在该部件的某一均质的含量超出 SJ/T11363-2006 标准规定的限量要求。

表中所有“X”的所有部件都符合欧盟 RoHS 法规。
“欧盟议会和理事会 2002 年 1 月 27 日关于电子电气设备中限制使用某些有害物质的 2002/95/EC 号指令”
注：环保使用期限的参考值取决于产品正常工作的温度和湿度等条件

产品中有毒有害物质或元素的名称及含量
根據中國<<電子信息產品污染控制管理辦法>>

部件名称	键 盘					
	铅 (Pb)	汞 (Hg)	镉 (Cd)	六价铬 (Cr(VI))	多氯联苯 (PCBs)	多氯二噁英 (PDCs)
电缆 Cable	X	0	0	0	0	0
电路板组件 PWAs	X	0	0	0	0	0
塑料部件 Plastic parts	0	0	0	0	0	0
薄膜 Membrane	0	0	0	0	0	0
金属部件 Metal parts	X	0	0	0	0	0
橡胶圆顶 Rubber dome	0	0	0	0	0	0

0 = 表示该有害物质在该部件所有均质材料中的含量均在 SJ/T11363-2006 标准规定的限量要求以下。
X = 表示该有害物质至少在该部件的某一均质的含量超出 SJ/T11363-2006 标准规定的限量要求。

表中所有“X”的所有部件都符合欧盟 RoHS 法规。
“欧盟议会和理事会 2002 年 1 月 27 日关于电子电气设备中限制使用某些有害物质的 2002/95/EC 号指令”
注：环保使用期限的参考值取决于产品正常工作的温度和湿度等条件



1. 모델명: 제품 라벨에 표기된 'MN' 참조
2. 제조연월: 별도 표기(제품 라벨 혹은 제품)



1. 모델명: 제품 라벨에 표기된 'MN' 참조
2. 제조연월: 별도 표기(제품 라벨 혹은 제품)



1. 모델명: 제품 라벨에 표기된 'MN' 참조
2. 제조연월: 별도 표기(제품 라벨 혹은 제품)

Complies with
IDA Standards
DB101104

당해 무선설비는 전파혼신
가능성이 있으므로 인명안전과
관련된 서비스는 할 수 없음

依據台灣「低功率電波輻射性電機管理辦法」規定：

第十二條 經型式認證合格之低功率射頻電機，非經許可，公司、商號或使用者均不得擅自變更頻率、加大功率或變更原設計之特性及功能。

第十四條 低功率射頻電機之使用不得影響飛航安全及干擾合法通信；經發現有干擾現象時，應立即停用，並改善至無干擾時方得繼續使用。前項合法通信，指依電信法規定作業之無線電通信。低功率射頻電機須忍受合法通信或工業、科學及醫療用電波輻射性電機設備之干擾。

English To use the Hot Keys, press the key you want to use directly.

繁體中文 若要使用熱鍵，請直接按下要使用的按鍵。

简体中文 要使用热键，请直接按下要使用的键。

한국어 단축 키를 사용하려면 사용하려는 키를 직접 누릅니다.

English To use the FN function 1) press and hold the FN key (right side of spacebar) then 2) press the F key (blue icons) you want to use.

繁體中文 若要使用 FN 功能，1) 請按住 FN 功能鍵 (空白鍵右側)，然後 2) 按下要使用的 F 鍵 (藍色圖示)。

简体中文 要使用 FN 功能，1) 請按住 FN 功能鍵 (空格鍵右側)，然後 2) 按所需 F 鍵 (藍色圖標)。


한국어 FN 기능을 사용하려면 FN 키를 누른 채 사용하려는 기능 키(파란색 아이콘)를 누릅니다.

 Switch Applications
切换應用程式
切换应用程序
응용 프로그램 전환

 Launch Email
啟動電子郵件
启动电子邮件
이메일 실행

 Home
首頁
网络主页键
홈

 Launch Media Player
啟動媒體播放器
启动媒体播放器
미디어 플레이어 실행

 Show Desktop
顯示桌面
显示桌面
바탕 화면 표시


 Pre-track
上一首
上一曲目
이전 트랙

 Play/Pause
播放/暫停
播放/暂停
재생/일시 중지

 Next track
下一首
下一曲目
다음 트랙

 Mute
靜音
静音
음 소거

 Volume Down
音量減小
音量降低键
볼륨 줄이기

 Volume Up
音量增大
音量提高键
볼륨 높이기

 Search
搜尋
搜索
검색

 Lock PC
電腦鎖定
锁定计算机
PC 잠그기

 My Computer
我的電腦
我的电脑
내 컴퓨터

 PC Sleep
PC 休眠
计算机休眠
PC 절전

 Contextual Menu
右鍵選單
关联菜单
상황별 메뉴


 Scroll Lock
Scroll Lock
滚动锁定
스크롤 잠금

 Insert
Insert
插入键
삽입

 Print Screen
Print Screen
拷屏键
화면 인쇄

 Pause/Break
Pause/Break
暫停/中斷
일시 중지/중단

 Calculator
小算盤
计算器
계산기

 Backspace
後退鍵
退格键
백스페이스 키

Federal Communication Commission Interference Statement

This equipment has been tested and found to comply with the limits for a Class B digital device, pursuant to Part 15 of the FCC Rules. These limits are designed to provide reasonable protection against harmful interference in a residential installation. This equipment generates, uses and can radiate radio frequency energy and, if not installed and used in accordance with the instructions, may cause harmful interference to radio communications. However, there is no guarantee that interference will not occur in a particular installation. If this equipment does cause harmful interference to radio or television reception, which can be determined by turning the equipment off and on, the user is encouraged to try to correct the interference by one of the following measures:

- Reorient or relocate the receiving antenna.
- Increase the separation between the equipment and receiver.
- Connect the equipment into an outlet on a circuit different from that to which the receiver is connected.
- Consult the dealer or an experienced radio/TV technician for help.

FCC Caution: Any changes or modifications not expressly approved by the party responsible for compliance could void the user's authority to operate this equipment.

This device complies with Part 15 of the FCC Rules. Operation is subject to the following two conditions: (1) This device may not cause harmful interference, and (2) this device must accept any interference received, including interference that may cause undesired operation.

Industry Canada Statement

This device complies with RSS-210 of the Industry Canada Rules. Operation is subject to the following two conditions:

- 1) this device may not cause interference and
- 2) this device must accept any interference, including interference that may cause undesired operation of the device



Product Specification

Product Name : 2.4GHz Cordless keyboard

Model Name : Y-R0009

Brand Name : Logitech

Antenna	Internal																												
Type of Antenna (Loop....)	PCB printed																												
antenna gain	0.45dBi																												
Method of Frequency generation	16 MHz Crystal + PLL																												
Number of channels	12																												
Carrier frequencies																													
	<table border="1"> <thead> <tr> <th>Index</th> <th>RF channel</th> <th>Index</th> <th>RF channel</th> </tr> </thead> <tbody> <tr> <td>1</td> <td>2405(0x05)</td> <td>7</td> <td>2441 (0x29)</td> </tr> <tr> <td>2</td> <td>2408 (0x08)</td> <td>8</td> <td>2444 (0x2C)</td> </tr> <tr> <td>3</td> <td>2414 (0x0E)</td> <td>9</td> <td>2462 (0x3E)</td> </tr> <tr> <td>4</td> <td>2417 (0x11)</td> <td>10</td> <td>2465 (0x41)</td> </tr> <tr> <td>5</td> <td>2432 (0x20)</td> <td>11</td> <td>2471 (0x47)</td> </tr> <tr> <td>6</td> <td>2435 (0x23)</td> <td>12</td> <td>2474 (0x4A)</td> </tr> </tbody> </table>	Index	RF channel	Index	RF channel	1	2405(0x05)	7	2441 (0x29)	2	2408 (0x08)	8	2444 (0x2C)	3	2414 (0x0E)	9	2462 (0x3E)	4	2417 (0x11)	10	2465 (0x41)	5	2432 (0x20)	11	2471 (0x47)	6	2435 (0x23)	12	2474 (0x4A)
Index	RF channel	Index	RF channel																										
1	2405(0x05)	7	2441 (0x29)																										
2	2408 (0x08)	8	2444 (0x2C)																										
3	2414 (0x0E)	9	2462 (0x3E)																										
4	2417 (0x11)	10	2465 (0x41)																										
5	2432 (0x20)	11	2471 (0x47)																										
6	2435 (0x23)	12	2474 (0x4A)																										
20dB channel bandwidth (Carson's rule) for modulated carrier	2 MHz @ -20 dBm																												
Channel switching frequency range	2405 MHz - 2474 MHz																												
Modulation characteristics	Digital GFSK																												
Transmitter aggregate data rate	2Mbps/s per second																												
Effective radiated power	0 dBi																												
If intermittent duty	duty cycle: Tx on = 0.08 ms Tx off = 7.92 ms Duty cycle (Tx on / (Tx on + Tx off)) = 1%																												
Transmission range	100m max in free space																												
Method of Frequency generation	16 MHz Crystal + PLL																												
Range	100m in free space																												
Power source	AA Alkaline battery																												
Power consumption	10mW typical (typing)																												
Nominal DC voltage	3V																												
Operating voltage	2.1V 3.2V																												
Extreme test voltage (low)	2.1V																												
Applies cut off voltage (automatic switch off)	2.1V typ																												
DC maximum current	30 mA worst case																												
Extreme Temperature range	0 °C to 40 °C																												