

k609

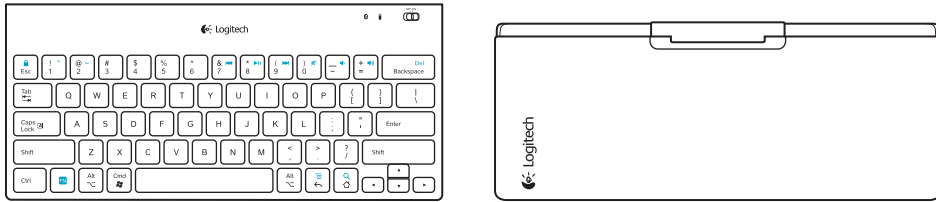


Getting started with
Logitech® Tablet Keyboard K609

Product photo to come



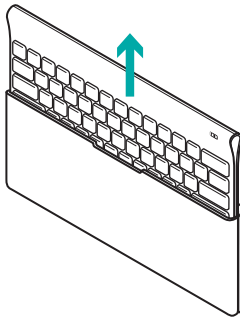
What's in the box



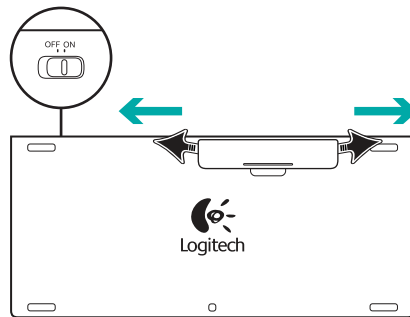
Product setup

Set up the keyboard

1



2



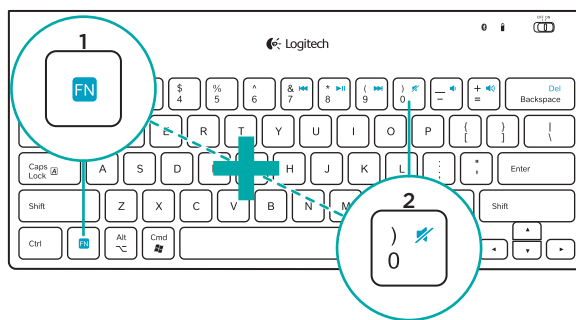
3

www.logitech.com/K609/support



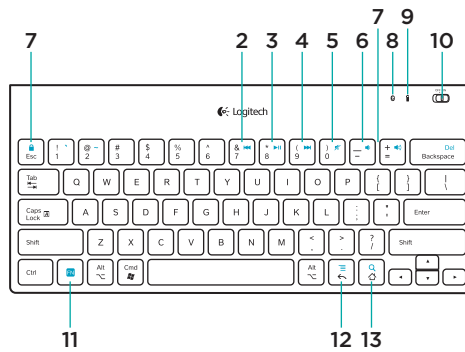
1. Remove the keyboard from its case.
2. Pull the battery tabs on the keyboard to activate the batteries. The **On/Off** switch is already in the **On** position.
3. Visit www.logitech.com/K609/support for Bluetooth setup instructions for your tablet.

Using the keyboard FN key

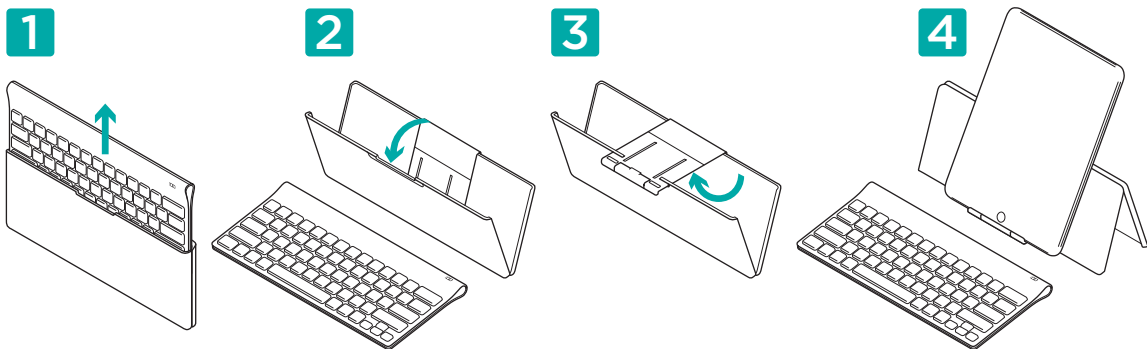


User-friendly enhanced F-keys let you launch applications easily. To use the enhanced functions (blue icons), first press and hold the FN key; second, press the F-key you want to use.

Keyboard features



- | | | |
|---------------------------|--|-------------------------------|
| 1. FN + Esc Keyboard lock | 7. FN + = Volume up | 10. On/Off slider switch |
| 2. FN + 7 Back | 8. Bluetooth icon
Green = connection made;
red = no connection | 11. FN key |
| 3. FN + 8 Play/Pause | 9. Battery icon
Green = full charge;
red = replace batteries | 12. FN + Back arrow Menu |
| 4. FN + 9 Forward | | 13. FN + Home Internet search |
| 5. FN + 0 Mute | | |
| 6. FN + - Volume down | | |



Help with setup: keyboard not working

- Is the keyboard turned on? Slide the keyboard Off/On switch to the On position.
- Restart the tablet.
- Is the Battery icon red? If it's red, replace the batteries.
- Re-establish the Bluetooth connection between the keyboard and your tablet.
Visit www.logitech.com/K609/support for Bluetooth setup instructions.

What do you think?

Please take a minute to tell us. Thank you for purchasing our product.

www.logitech.com/ithink

www.logitech.com/support



België/Belgique	Dutch: +32-(0)2 200 64 44; French: +32-(0)2 200 64 40	South Africa	0800 981 089
Česká Republika	+420 239 000 335	Suomi	+358-(0)9 725 191 08
Danmark	+45-38 32 31 20	Sverige	+46-(0)8-501 632 83
Deutschland	+49-(0)69-51 709 427	Türkiye	00800 44 882 5862
España	+34-91-275 45 88	United Arab Emirates	8000 441-4294
France	+33-(0)1-57 32 32 71	United Kingdom	+44-(0)203-024-81 59
Ireland	+353-(0)1 524 50 80	European, Mid. East., & African Hq.	English: +41-(0)22 761 40 25 Fax: +41-(0)21 863 54 02
Italia	+39-02-91 48 30 31	Morges, Switzerland	
Magyarország	+36 (1) 777-4853	Eastern Europe	English: 41-(0)22 761 40 25
Nederland	+31-(0)-20-200 84 33	United States	+1 646-454-3200
Norge	+47-(0)24 159 579	Argentina	+0800 555 3284
Österreich	+43-(0)1 206 091 026	Brasil	+0800 891 4173
Polska	00800 441 17 19	Canada	+1-866-934-5644
Portugal	+351-21-415 90 16	Chile	+1230 020 5484
Россия	+7(495) 641 34 60	Latin America	+55 11 3444 6761
Schweiz/Suisse	D +41-(0)22 761 40 12	Mexico	+001 800 578 9619
Svizzera	F +41-(0)22 761 40 16 I +41-(0)22 761 40 20 E +41-(0)22 761 40 25		

www.logitech.com

© 2011 Logitech, Inc. All rights reserved. Logitech, the Logitech logo, and other Logitech marks are owned by Logitech and may be registered. Mac and the Mac logo are trademarks of Apple, Inc., registered in the U.S. and other countries. Microsoft, Windows Vista, Windows, and the Windows logo are trademarks of the Microsoft group of companies. Android is a trademark of Google Inc. The Bluetooth® word mark and logos are owned by the Bluetooth SIG, Inc. and any use of such marks by Logitech is under license. All other trademarks are the property of their respective owners.

621-XXXXXX.002