



Getting started with  
Première utilisation  
Logitech® Tablet Keyboard  
for iPad

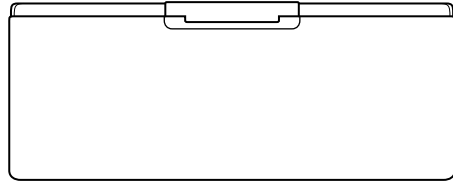
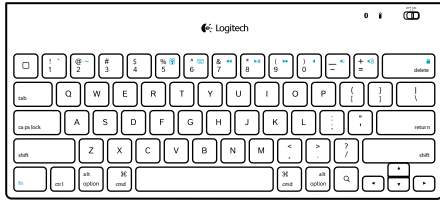


## Contents

English . . . . .	3
Français . . . . .	5
Español . . . . .	7
Português. . . . .	9
<a href="http://www.logitech.com/support">www.logitech.com/support</a>  . . . . .	11



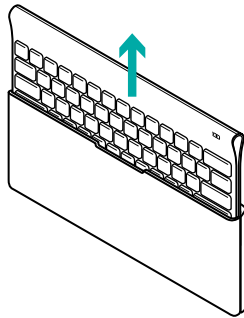
## What's in the box



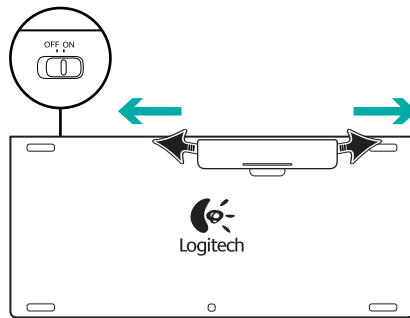
## Product setup

Set up the keyboard

1



2



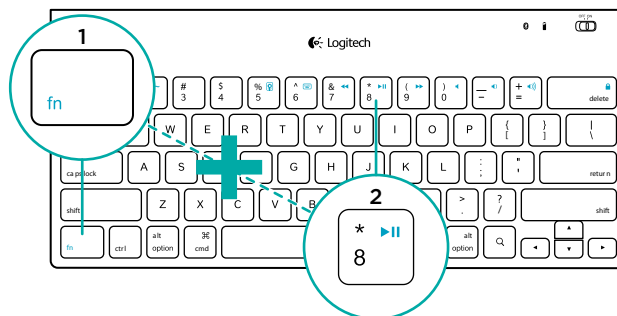
3

[www.logitech.com/tablet-keyboard/support](http://www.logitech.com/tablet-keyboard/support)



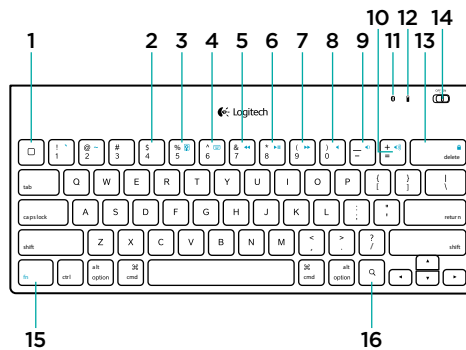
1. Remove the keyboard from its case.
2. Pull the battery tabs on the keyboard to activate the batteries. The **On/Off** switch is already in the **On** position.
3. Visit [www.logitech.com/tablet-keyboard/support](http://www.logitech.com/tablet-keyboard/support) for Bluetooth setup instructions for your tablet.

## Using the keyboard FN key

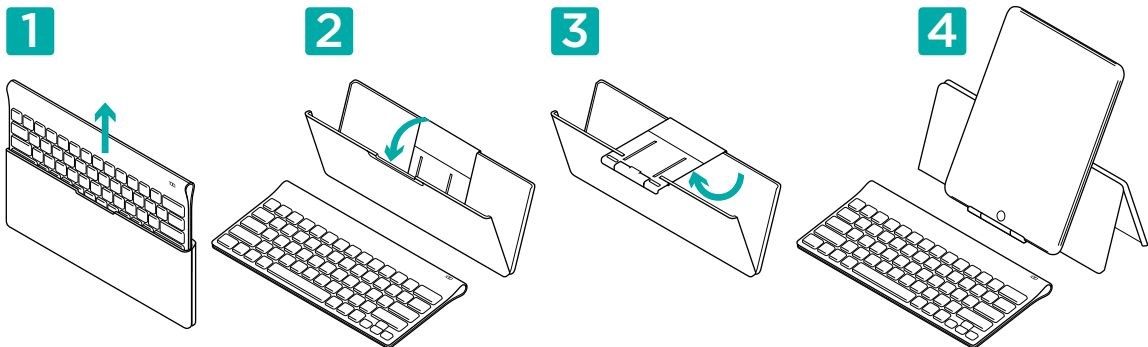


User-friendly enhanced F-keys provide shortcuts to useful functions, such as Volume, Play and Next Track. To use the enhanced functions (blue icons), first press and hold the FN key; second, press the F-key you want to use.

## Keyboard features



- |   |   |  |
|---|---|--|
| 1. Home                                 | 9. FN + - Volume down   | 12. Battery icon<br><b>Green</b> = full charge;<br><b>Red</b> = battery power is low;<br>replace batteries |
| 2. FN + 4 Switch language               | 10. FN + = Volume up  | 13. FN + Delete Lock/Unlock<br>iPad  |
| 3. FN + 5 Slideshow                     | 11. Bluetooth icon<br><b>Blinking green</b> = device is<br>discoverable and Bluetooth<br>connection is pending;<br><b>Solid green</b> = Bluetooth<br>connection made; <b>Red</b> = no<br>Bluetooth connection | 14. On/Off slider switch   |
| 4. FN + 6 Show/Hide<br>virtual keyboard |   | 15. FN key   |
| 5. FN + 7 Previous track                |   | 16. Search   |
| 6. FN + 8 Play/Pause                    |   |  |
| 7. FN + 9 Next track                    |   |  |
| 8. FN + 0 Mute                          |   |  |



## Help with setup: keyboard not working

- Is the keyboard turned on? Slide the keyboard Off/On switch to the On position.
- Restart the tablet.
- Is the Battery icon red? If it's red, replace the batteries.
- Re-establish the Bluetooth connection between the keyboard and your tablet.  
Visit [www.logitech.com/tablet-keyboard/support](http://www.logitech.com/tablet-keyboard/support) for Bluetooth setup instructions.

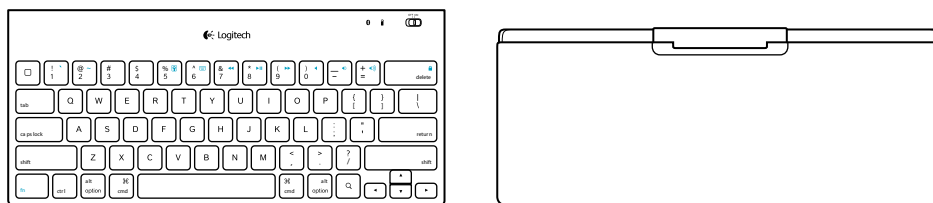
## What do you think?

Please take a minute to tell us. Thank you for purchasing our product.

[www.logitech.com/ithink](http://www.logitech.com/ithink)



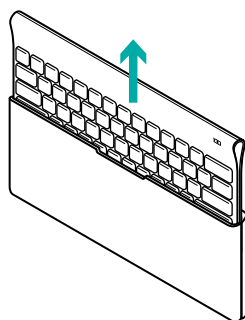
## Contenu du coffret



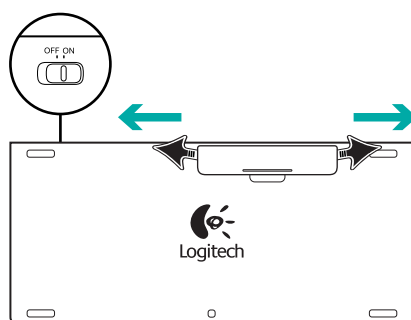
## Installation du produit

Installez le clavier

1



2



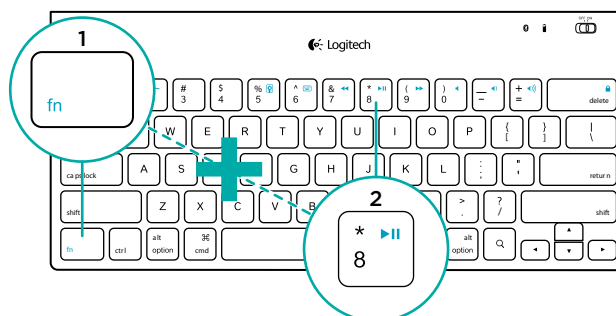
3

[www.logitech.com/tablet-keyboard/support](http://www.logitech.com/tablet-keyboard/support)



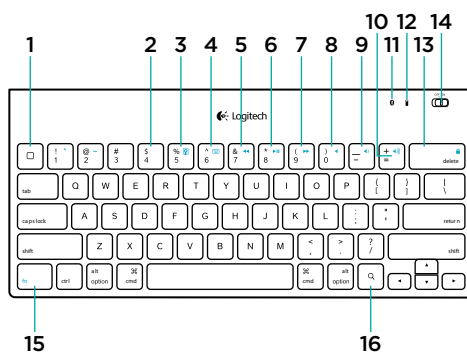
1. Retirez le clavier de son étui.
2. Retirez les languettes de protection des piles situées sur la face arrière du clavier pour activer les piles. Le commutateur **Marche/Arrêt** (On/Off) est déjà sur la position **Marche** (On).
3. Visitez le site [www.logitech.com/tablet-keyboard/support](http://www.logitech.com/tablet-keyboard/support) pour obtenir les instructions de configuration du Bluetooth pour votre tablette.

## Utilisation de la touche FN du clavier

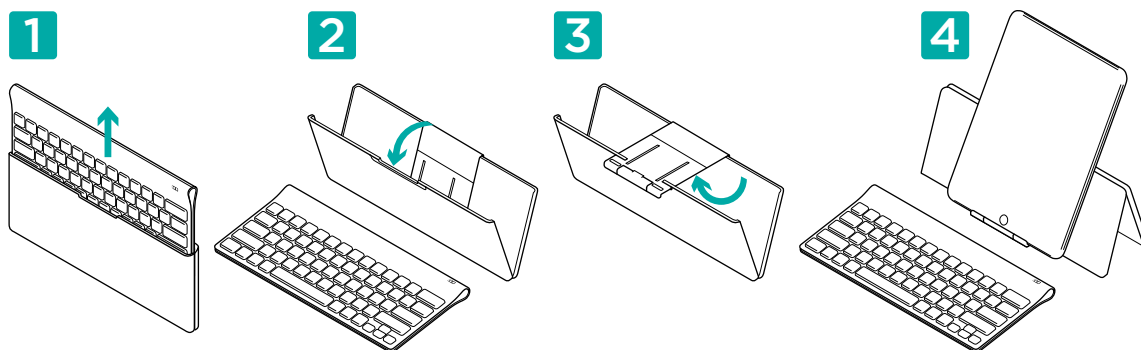


Les touches F conviviales offrent des raccourcis pour des fonctions telles que Volume, Lecture et Piste suivante. Pour profiter des fonctions avancées (icônes de couleur bleue), appuyez sur la touche FN sans la relâcher et sur la touche F de votre choix.

## Fonctions du clavier



- |   |  |   |
|---|--|---|
| 1. Accueil                                    | 9. FN + - Volume -   | 12. Icône de niveau des piles<br><b>Vert</b> = charge complète;<br><b>Rouge</b> = le niveau de charge des piles est faible; remplacez-les |
| 2. FN + 4 Changer de langue                   | 10. FN + = Volume +  | 13. FN + Retour<br>Arrière Verrouiller/<br>Déverrouiller l'iPad   |
| 3. FN + 5 Diaporama                           | 11. Icône Bluetooth<br><b>Vert clignotant</b> = le dispositif peut être détecté et la connexion Bluetooth est en attente; <b>Vert fixe</b> = la connexion Bluetooth est établie; <b>Rouge</b> = aucune connexion Bluetooth | 14. Commutateur Marche/Arrêt  |
| 4. FN + 6 Afficher/Masquer le clavier virtuel |  | 15. Touche FN   |
| 5. FN + 7 Piste précédente                    |  | 16. Recherche   |
| 6. FN + 8 Lecture/Pause                       |  |   |
| 7. FN + 9 Piste suivante                      |  |   |
| 8. FN + 0 Sourdine                            |  |   |



## Aide à la configuration: le clavier ne fonctionne pas

- Le clavier est-il sous tension ? Faites glisser le commutateur Marche/Arrêt du clavier en position On.
- Redémarrez la tablette.
- L'icône de niveau des piles s'allume-t-elle en rouge? Si oui, remplacez les piles.
- Rétablissez la connexion Bluetooth entre le clavier et la tablette. Visitez le site [www.logitech.com/tablet-keyboard/support](http://www.logitech.com/tablet-keyboard/support) pour obtenir les instructions de configuration du Bluetooth.

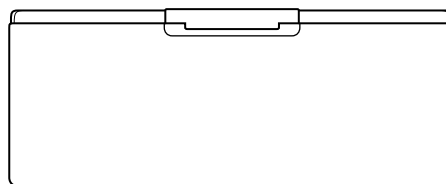
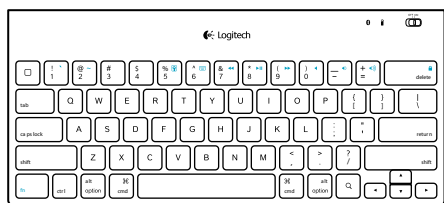
## Qu'en pensez-vous?

Veillez prendre quelques minutes pour nous faire part de vos commentaires. Vous venez d'acheter ce produit et nous vous en félicitons.

[www.logitech.com/ithink](http://www.logitech.com/ithink)



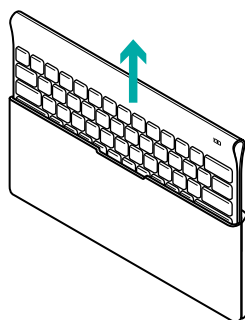
## Contenido de la caja



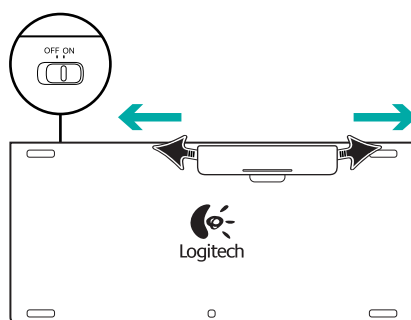
## Instalación del producto

Instala el teclado

1



2



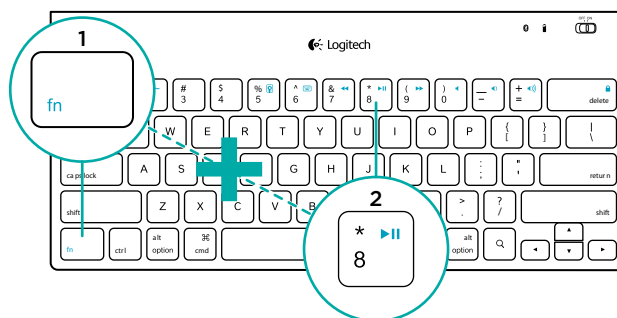
3

[www.logitech.com/tablet-keyboard/support](http://www.logitech.com/tablet-keyboard/support)



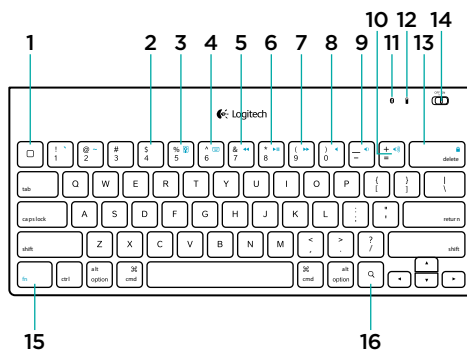
1. Saca el teclado de su estuche.
2. Quita las lengüetas de las baterías del teclado para activarlas. El conmutador de **encendido/apagado** está ya en la posición de **encendido**.
3. En [www.logitech.com/tablet-keyboard/support](http://www.logitech.com/tablet-keyboard/support) encontrarás instrucciones de configuración de Bluetooth para la tableta.

## Uso de la tecla FN del teclado

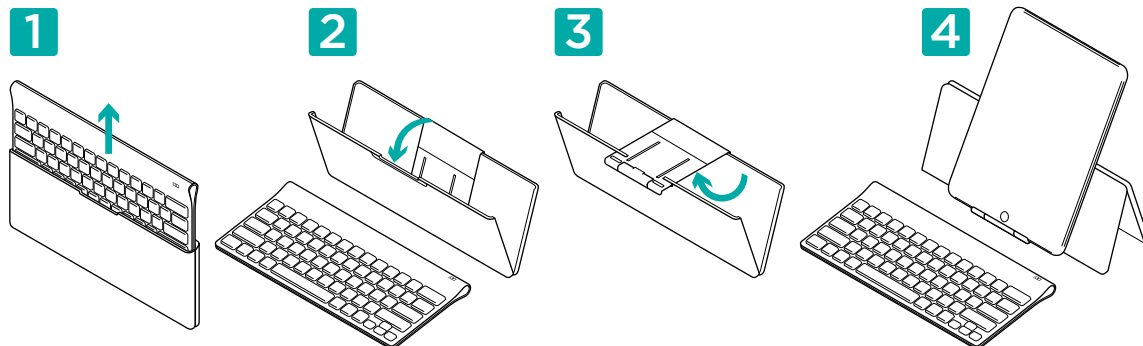


Las teclas F mejoradas agilizan el uso de funciones útiles como ajuste de volumen, reproducción y pista siguiente. Para usar las funciones mejoradas (iconos azules), mantén pulsada la tecla FN mientras pulsas la tecla F que deseas usar.

## Características del teclado



- |   |   |   |
|---|---|---|
| 1. Home                                   | 9. FN + - Bajar volumen   | 12. Icono de la batería                   |
| 2. FN + 4 Cambiar idioma                  | 10. FN + = Subir volumen  | <b>Verde</b> = carga máxima;              |
| 3. FN + 5 Presentación                    | 11. Icono de Bluetooth  | <b>Rojo</b> = carga baja,                 |
| 4. FN + 6 Mostrar/Ocultar teclado virtual | <b>Destellos verdes</b> = dispositivo visible y conexión Bluetooth pendiente; <b>Verde permanente</b> = conexión Bluetooth establecida; | debes cambiar las baterías                |
| 5. FN + 7 Pista anterior                  | <b>Rojo</b> = no hay conexión Bluetooth   | 13. FN + Delete Bloquear/Desbloquear iPad |
| 6. FN + 8 Reproducir/Pausa                |   | 14. Conmutador de encendido/apagado       |
| 7. FN + 9 Pista siguiente                 |   | 15. Tecla FN                              |
| 8. FN + 0 Silenciar                       |   | 16. Buscar                                |



## Ayuda con la instalación: el teclado no funciona

- ¿Has encendido el teclado? Coloca el conmutador de encendido/apagado del teclado en la posición de encendido.
- Reinicia la tableta.
- Si el icono de batería tiene una luz roja, cambia las baterías.
- Restablece la conexión Bluetooth entre el teclado y la tableta. En [www.logitech.com/tablet-keyboard/support](http://www.logitech.com/tablet-keyboard/support) encontrarás instrucciones de configuración de Bluetooth.

## ¿Cuál es tu opinión?

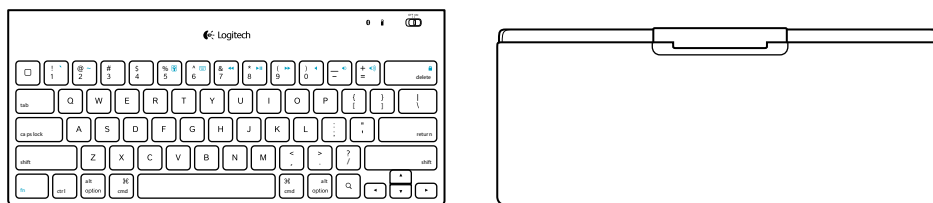
Nos gustaría conocerla, si puedes dedicarnos un minuto. Te agradecemos la adquisición de nuestro producto.

[www.logitech.com/ithink](http://www.logitech.com/ithink)



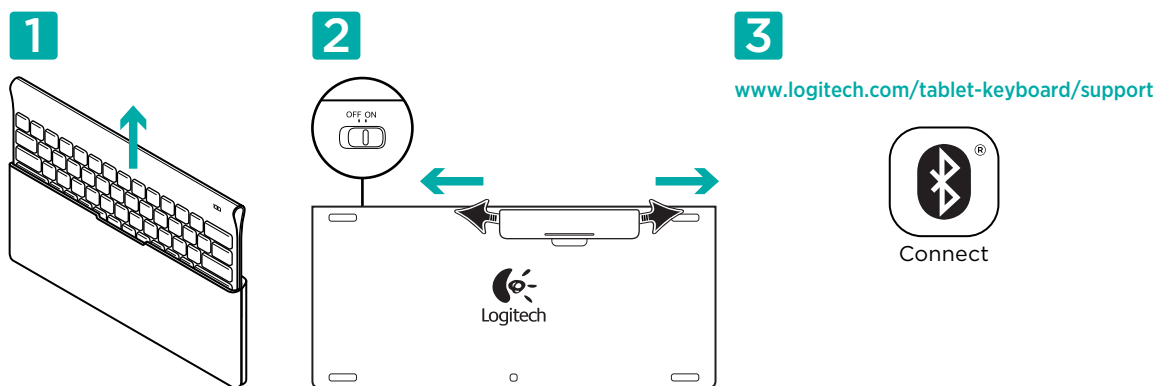


## O que a caixa contém



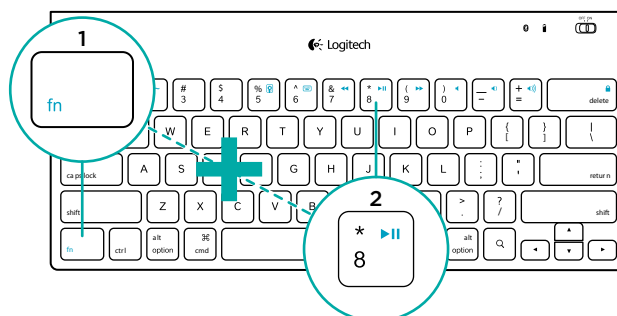
## Instalação do produto

Instale o teclado



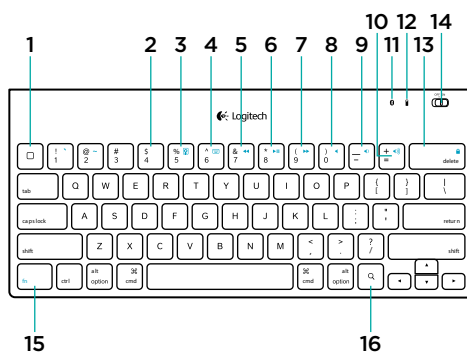
1. Remova o teclado do estojo.
2. Puxe as abas das pilhas no teclado para ativar as pilhas. O interruptor **On/Off** já está na posição **On**.
3. Para obter instruções de configuração do Bluetooth para o tablet, visite [www.logitech.com/tablet-keyboard/support](http://www.logitech.com/tablet-keyboard/support).

## Usar as teclas FN do teclado

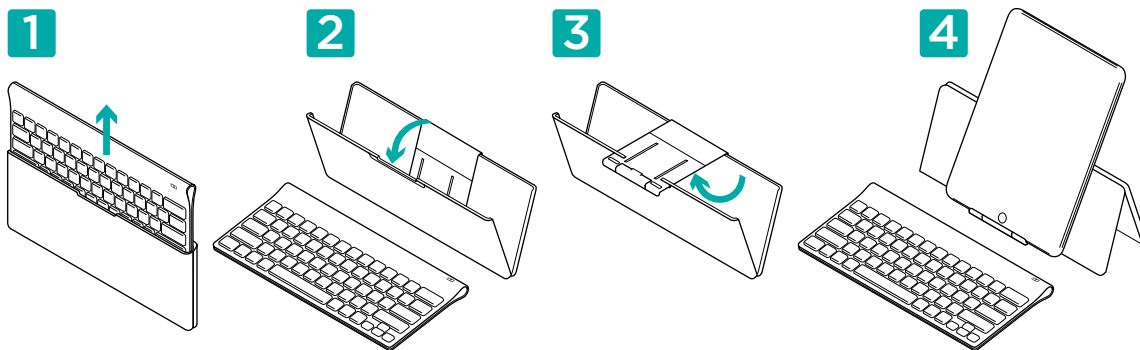


As teclas F avançadas e práticas oferecem atalhos para funções úteis, como Volume, Reproduzir e Próxima faixa. Para usar as funções avançadas (ícones azuis), primeiro pressione e mantenha pressionada a tecla FN; em seguida pressione a tecla F a ser usada.

## Recursos do teclado



- |  |   |  |
|--|---|--|
| 1. Home                                      | 8. FN + 0 Sem áudio   | 12. Ícone de pilha<br><b>Verde</b> = carga total;<br><b>Vermelho</b> = as pilhas<br>estão fracas; trocar as pilhas |
| 2. FN + 4 Alternância<br>de idiomas          | 9. FN + - Menos volume  | 13. FN + Delete Bloquear/<br>Desbloquear iPad  |
| 3. FN + 5 Apresentação<br>de slides          | 10. FN + = Mais volume  | 14. Controle deslizante para<br>ligar/desligar   |
| 4. FN + 6 Mostrar/Ocultar<br>teclado virtual | 11. Ícone do Bluetooth<br><b>Verde intermitente</b> =<br>o dispositivo é detectável<br>e a conexão Bluetooth está<br>pendente; <b>Verde estável</b> =<br>Conexão Bluetooth feita;<br><b>Vermelho</b> = nenhuma<br>conexão Bluetooth | 15. Tecla FN   |
| 5. FN + 7 Faixa anterior                     |   | 16. Pesquisar  |
| 6. FN + 8 Reproduzir/Pausar                  |   |  |
| 7. FN + 9 Próxima faixa                      |   |  |



## Ajuda para a configuração: O teclado não funciona

- O teclado está ligado? Deslize o interruptor de Off/On do teclado para a posição On.
- Reinicie o tablet.
- O ícone de Pilhas está vermelho? Se sim, troque as pilhas.
- Restabeleça a conexão Bluetooth entre o teclado e o tablet. Para obter instruções de configuração do Bluetooth, visite [www.logitech.com/tablet-keyboard/support](http://www.logitech.com/tablet-keyboard/support).

## O que acha?

Reserve um momento para nos informar. Obrigado por adquirir nosso produto.

[www.logitech.com/ithink](http://www.logitech.com/ithink)

[www.logitech.com/support](http://www.logitech.com/support)



United States	+1 646-454-3200
Argentina	+00800-555-3284
Canada	+1 866-934-5644
Brasil	+0 800-891-4173
Chile	1230 020 5484
Latin America	+1 800-578-9619
Mexico	001 800 578 9619

[www.logitech.com](http://www.logitech.com)

© 2011 Logitech, Inc. All rights reserved. Logitech, the Logitech logo, and other Logitech marks are owned by Logitech and may be registered. Mac and the Mac logo are trademarks of Apple, Inc., registered in the U.S. and other countries. The Bluetooth® word mark and logos are owned by the Bluetooth SIG, Inc. and any use of such marks by Logitech is under license. All other trademarks are the property of their respective owners.

© 2011 Logitech. Tous droits réservés. Logitech, le logo Logitech et les autres marques Logitech sont la propriété exclusive de Logitech et sont susceptibles d'être des marques déposées. Mac et le logo Mac sont des marques déposées d'Apple Inc., enregistrées aux Etats-Unis et dans d'autres pays. Le mot Bluetooth® et son logo sont des marques déposées de Bluetooth SIG, Inc. Toutes les autres marques sont la propriété exclusive de leurs détenteurs respectifs.

**621-000041.002**