

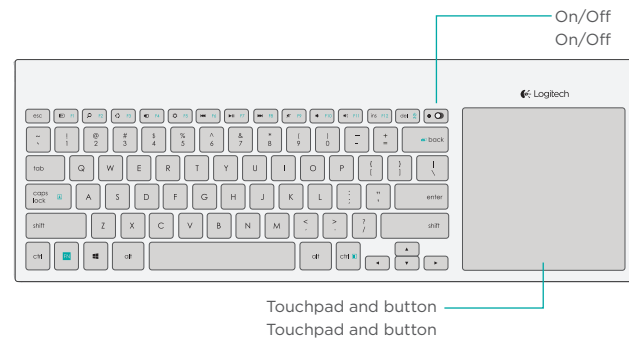
# Wireless All-in-One Keyboard TK820

## Setup Guide



### Getting to know your keyboard

Lernen Sie Ihre Tastatur kennen



**1**

**2**

**3**

**Software Installation**

Install Logitech software that adds support for customization, extra gestures, and smoother operation

**Software Installation**

Install Logitech software that adds support for customization, extra gestures, and smoother operation

[www.logitech.com/download/tk820](http://www.logitech.com/download/tk820)

### Function Keys

Lernen Sie Ihre tur

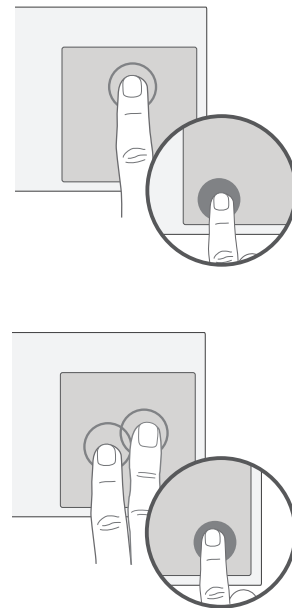
#### Windows 8

- F1** Switch applications  
Switch applications
- F2** Search  
Search
- F3** Share  
Share
- F4** Devices  
Devices
- F5** Settings  
Settings

- FN + del** PC sleep  
PC sleep
- FN + caps lock** Scroll lock  
Scroll lock
- FN + ctrl** Application  
Application
- FN + back** Print Screen  
Print Screen

### Gestures

Gesten



#### Left-click

Tap with one finger or press the lower left side of the trackpad.

Tap with one finger or press the lower left side of the trackpad.

#### Right-click

Tap with two fingers or press the lower right side of the trackpad.

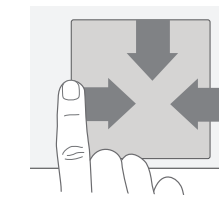
Tap with two fingers or press the lower right side of the trackpad.

**FN** + left click disables tap and edge gestures

**FN** + left click disables tap and edge gestures

### Edge Gestures (Windows 8)

Edge-Gesten (Windows 8)

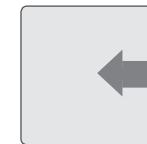


Swipe from trackpad edge

Swipe from trackpad edge



Previous application  
Previous application



Show Charm bar  
Show Charm bar



Show Application bar  
Show Application bar

## Unifying Unifying

Logitech® Unifying technology connects up to six compatible Logitech mice and keyboards to the same receiver, using only one USB port for multiple devices. To learn more, visit the Unifying product page.

Logitech® Unifying technology connects up to six compatible Logitech mice and keyboards to the same receiver, using only one USB port for multiple devices. To learn more, visit the Unifying product page.

## Visit the Product Page Besuchen sie die Produktsiet

While you're online, visit the Wireless Touch Keyboard Product Page, your destination for world-class support. In addition to software, you'll find tutorials, troubleshooting tips, and live forums.

While you're online, visit the Wireless Touch Keyboard Product Page, your destination for world-class support. In addition to software, you'll find tutorials, troubleshooting tips, and live forums.

## Troubleshooting Felherbehebung

### Touch Keyboard not working?

- Restart the keyboard by turning it off and then back on.
- Move the Unifying receiver to another USB port or plug the receiver directly into the computer instead of a USB hub.
- Check the battery orientation.
- If the status light next to On/Off switch blinks red, replace batteries.
- Using USB 3.0 on your computer? For more information on solving problems with USB 3.0, visit [www.logitech.com/support/unifying](http://www.logitech.com/support/unifying).

### Problem with gestures?

- Avoid resting unused fingers or your palm on the touch surface.

### Touch Keyboard not working?

- Restart the keyboard by turning it off and then back on.
- Move the Unifying receiver to another USB port or plug the receiver directly into the computer instead of a USB hub.
- Check the battery orientation.
- If the status light next to On/Off switch blinks red, replace batteries.
- Using USB 3,0 on your computer? For more information on solving problems with USB 3.0, visit [www.logitech.com/support/unifying](http://www.logitech.com/support/unifying).

### Problem with gestures?

- Avoid resting unused fingers or your palm on the touch surface.



[www.logitech.com/support/unifying](http://www.logitech.com/support/unifying)



[www.logitech.com](http://www.logitech.com)

© 2013 Logitech. All rights reserved. Logitech, the Logitech logo, and other Logitech marks are owned by Logitech and may be registered. Apple, Mac, and the Mac logo are trademarks of Apple Inc., registered in the U.S. and other countries. Bluetooth is a registered trademark of Bluetooth SIG, Inc. All other trademarks are the property of their respective owners. Logitech assumes no responsibility for any errors that may appear in this manual. Information contained herein is subject to change without notice.

620-00xxxxxxx

## Support

[www.logitech.com/support/tk820](http://www.logitech.com/support/tk820)



Country 1 +x xxx-xxx-xxxx

Country 2 +x xxx-xxx-xxxx

