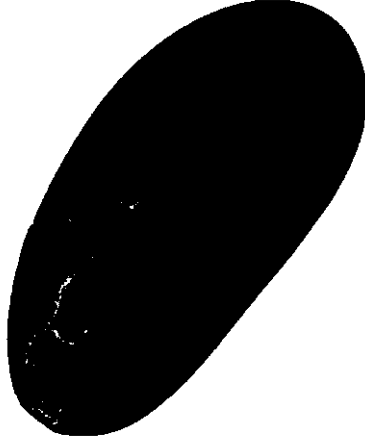




Logitech Cordless Wheel Mouse

User's Guide



Prelim
copy

DZL201215

© 1998 Logitech. All Rights Reserved. Logitech, the Logitech logo, and the Logitech products referred to herein are either the trademarks or the registered trademarks of Logitech. All other trademarks are the property of their respective owners. Logitech assumes no responsibility for any errors that may appear in this manual. Information contained herein is subject to change without notice.

Part Number: 622324-0403 Rev. A

Software License Agreement. LOGITECH IS WILLING TO LICENSE THE ENCLOSED SOFTWARE TO YOU ONLY ON THE CONDITION THAT YOU ACCEPT ALL OF THE TERMS CONTAINED IN THIS LICENSE AGREEMENT. This is a legal agreement between you (either an individual end-user or an entity) and Logitech. By opening the software package, you are agreeing to be bound by the terms and conditions of the Agreement. If you do not agree to the terms of this Agreement, promptly return the software package and other items that are part of this product in their original package with your payment receipt to your point of purchase for a full refund. **Grant of License.** Logitech and its suppliers grant you a non-exclusive license to use one copy of the enclosed software program ("Software") on one computer only with the Logitech product you have purchased. No other rights are granted. The Software is in use if it is loaded on the computer's permanent or temporary memory. For backup purposes only, you may make one copy of the Software. You must include on the backup copy all copyright and other notices included on the Software as supplied by Logitech. Installation on a network server for the sole purpose of your internal distribution of the Software is permitted only if you have purchased an individual Software package for each networked computer to which the Software is distributed. **Restrictions.** Logitech and its suppliers retain ownership of the Software. You shall not decompile, disassemble, reverse-engineer, or modify the Software in any way. You may not transmit the Software over a network (except as expressly permitted above), by telephone, or electronically using any means. You may not transfer the Software except upon a permanent transfer of the enclosed Logitech product provided that all Software updates are included in the transfer, you do not retain a copy of the Software, and the transferee agrees to be bound by the terms and conditions in this license. Upon any violation of any of the provisions of this Agreement, rights to use the Software shall automatically terminate and the Software must be returned to Logitech or all copies of the Software destroyed. **Limited Product Warranty.** Logitech warrants that any hardware products accompanying this documentation shall be free from significant defects in material and workmanship for a period of three years from the date of purchase. Logitech also warrants that the software accompanying this documentation will perform substantially in accordance with the documentation for a period of 90 days from the date of purchase. Logitech's hardware and software warranty is nontransferable and is limited to the original purchaser. **Product Remedies.** Logitech's entire liability and the licensee's exclusive remedy for any breach of warranty, shall be, at Logitech's option, either (a) return of the price paid and (b) repair or replacement of the hardware or software, provided that the hardware or software is returned to the point of purchase, with a copy of the sales receipt. Any replacement hardware or software will be warranted for the remainder of the original warranty period or 30 days for the hardware and 30 days for the software, whichever is longer. These remedies are void if failure of the hardware or software has resulted from accident, abuse, or misapplication.

LIMITATION OF LIABILITY. THE WARRANTIES SET FORTH IN THIS AGREEMENT REPLACE ALL OTHER WARRANTIES. LOGITECH EXPRESSLY DISCLAIMS ALL OTHER WARRANTIES, INCLUDING, BUT NOT LIMITED TO, THE IMPLIED WARRANTIES OF MERCHANTABILITY AND FITNESS FOR A PARTICULAR PURPOSE AND NON-INFRINGEMENT OF THIRD-PARTY RIGHTS WITH RESPECT TO THE DOCUMENTATION, SOFTWARE AND HARDWARE. NO LOGITECH DEALER, AGENT, OR EMPLOYEE IS AUTHORIZED TO MAKE ANY MODIFICATION, EXTENSION, OR ADDITION TO THIS WARRANTY. IN NO EVENT WILL LOGITECH OR ITS SUPPLIERS BE LIABLE FOR ANY COSTS OF PROCUREMENT OF SUBSTITUTE PRODUCTS OR SERVICES, LOST PROFITS, LOSS OF INFORMATION OR DATA, OR ANY OTHER SPECIAL, INDIRECT, CONSEQUENTIAL OR INCIDENTAL DAMAGES ARISING IN ANY WAY OUT OF THE SALE OF USE OF, OR INABILITY TO USE ANY LOGITECH PRODUCT OR SERVICE. EVEN IF LOGITECH HAS BEEN ADVISED OF THE POSSIBILITY OF SUCH DAMAGES. IN NO CASE SHALL LOGITECH'S LIABILITY EXCEED THE ACTUAL MONEY PAID FOR THE PRODUCTS AT ISSUE. Because some jurisdictions do not allow the limitation of implied warranties of liability for incidental, consequential, special, or indirect damages, the above limitation may not always apply. The above limitations will not apply in case of personal injury where and to the extent that applicable law requires such liability.

U.S. Government Restricted Rights. The Software is provided to the U.S. Government only with restricted rights and limited rights. Use, duplication, or disclosure by the U.S. Government is subject to restrictions set forth in 48 C.F.R. 2.101 (October 1995), consisting of "Commercial Computer Software" and "Commercial Computer Software Documentation" as such terms are used in 48 C.F.R. 12.212 (September 1995), and in FAR Sections 52-227.14 and 52-227.19 or DFARS Section 52.227-7013 (C) (1) (ii), or their successors, as applicable. Consistent with 48 C.F.R. 12.212 and 48 C.F.R. 227.7202-1 through 227.7204-4 (June 1995), or any successor regulations, this Software is provided to U.S. Government users pursuant to the terms and conditions herein. Contractor/Manufacturer is Logitech Inc., 6505 Kaiser Drive, Fremont, CA 94555.

FCC Compliance and Advisory Statement. This hardware device complies with Part 15 of the FCC Rules. Operation is subject to the following two conditions: 1) this device may not cause harmful interference, and 2) this device must accept any interference received, including interference that may cause undesired operation. This equipment has been tested and found to comply with the limits for a Class B digital device, pursuant to Part 15 of the FCC Rules. These limits are designed to provide reasonable protection against harmful interference in a residential installation. This equipment generates, uses, and can radiate radio frequency energy and, if not installed or used in accordance with the instructions, may cause harmful interference to radio communications. However, there is no guarantee that interference will not occur in a particular installation. If this equipment does cause harmful interference to radio or television reception, which can be determined by turning the equipment off and on, the user is encouraged to try to correct the interference by one or more of the following measures: 1) reorient or relocate the receiving antenna; 2) increase the separation between the equipment and the receiver; 3) connect the equipment to an outlet on a circuit different from that to which the receiver is connected; 4) consult the dealer or an experienced radio/TV technician for help. Any changes or modifications not expressly approved by the party responsible for compliance could void the user's authority to operate the equipment. Where shielded interface cables have been provided with the product or specified additional components or accessories elsewhere defined to be used with the installation of the product, they must be used in order to ensure compliance with FCC regulations.

Canadian DOC Statement. This digital device does not exceed the Class B limits for Radio noise emissions from digital apparatus specified in the interference-causing equipment standard entitled "Digital Apparatus," ICES-003 of the Department of Communications.

Cet appareil numérique respecte les limites bruits radioélectriques applicables aux appareils numériques de Classe B prescrites dans la norme sur le matériel brouilleur: "Appareils Numériques," NMB-003 édictée par le Ministère des Communications.

This device complies with RSS-210 of Industry and Science Canada. Operation is subject to the following two conditions: 1) this device may not cause interference, and 2) this device must accept any interference, including interference that may cause undesired operation of the device.

Important Ergonomic Information

Some research suggests that long periods of repetitive motion using an improperly setup workspace, incorrect body position, and poor work habits may be associated with physical discomfort and injury to nerves, tendons, and muscles.

If you feel pain, numbness, tingling, weakness, swelling, burning, cramping, or stiffness in your hands, wrists, arms, shoulders, neck, or back while using a keyboard, mouse, or trackball, see a qualified health professional.

TO REDUCE THE RISK OF INJURY, FOLLOW THESE PRECAUTIONS:

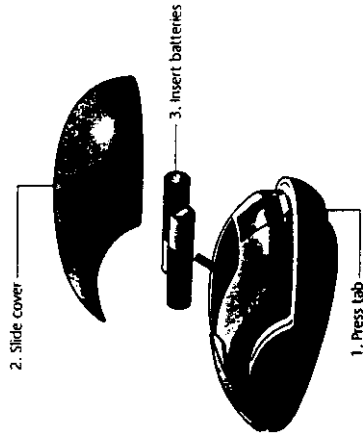
- Take frequent short breaks. Get up and walk around several times every hour.
- Vary your tasks throughout the day. Do something different with your hands and arms from time to time.
- Use a light touch on the keyboard and for better control of the mouse or trackball.
- Keep your shoulders relaxed with your elbows at your side. Position your keyboard and mouse so you do not have to reach to use them.
- Adjust your chair and keyboard so your upper arms and wrists are straight.
- Avoid resting your wrists on sharp edges.
- Use the software features of your keyboard, mouse, or trackball to help reduce stress to your arms, wrists, or hands by minimizing repetitive or awkward motions.

For additional information that may reduce your risk of injury, read the *Comfort Guidelines* that comes with your product, or read these same guidelines on Logitech's Internet site: www.logitech.com.

Installing the Batteries

The Cordless Wheel Mouse uses two AAA alkaline batteries. For best performance, use only alkaline batteries.

- 1. Remove the battery compartment cover on top of the mouse.** To release the cover, press the tab on the bottom of the mouse.
- 2. Slide the cover away from the mouse.**
- 3. Insert the two AAA batteries.** A diagram in the battery compartment shows the correct battery installation.
- 4. After the batteries are installed, carefully place the cover back into place.**



Battery Warning — Important!

When battery power is low, the MouseWare® software displays a dialog box in Windows® 95 suggesting that you change the batteries. You can also check battery power by accessing the Cordless page of the Mouse Properties. (See "Using the Software in Windows 95/Windows NT 4.0" for more information.)

Discard all used batteries according to the battery manufacturer's instructions. Exercise care when handling batteries. When batteries are misused, they may explode or leak, causing burns and personal injury. Do not open a battery or mutilate, dispose of in a fire, expose to heat above 212° F (100° C), immerse in water, install improperly, or recharge. Conducting materials, such as rings, bracelets, and keys, can short out a battery causing it to overheat and possibly leak or explode. When you are not using your cordless device for long periods of time, remove the batteries and store them in a dry place at normal room temperature.

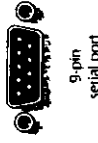
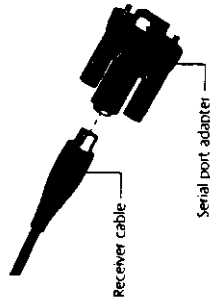
2 Connecting the Receiver

Your mouse uses digital radio technology. Communication between the mouse and your computer is achieved with great reliability using radio waves. The mouse does not have a bulky cable that can get in the way, nor does it use infrared technology, which often requires line-of-sight placement and usage. Instead, the mouse emits radio frequencies as a means of communicating, which are picked up by the receiver and passed on to your computer.

The receiver is connected to your computer via a single cable that plugs into your computer's PS/2 port. A 9-pin serial port adapter is provided should you need to connect this cable to your computer's serial port.

CAUTION: Before installing the receiver's cable, turn off your computer. Plugging or unplugging cables to your computer's PS/2 port can damage the PS/2 port or your computer.

- 1. Make sure that your computer is turned off.**
- 2. Connect the receiver's cable to the computer's PS/2 mouse port or its 9-pin serial port using the 9-pin adapter.** If you are connecting the mouse cable to the PS/2 port, remove the serial port adapter. When using the 9-pin serial port adapter, connect the adapter to the computer port, tighten the thumb screws, and connect the mouse cable to the adapter. Be sure to line up the arrows on both the cable and the adapter.



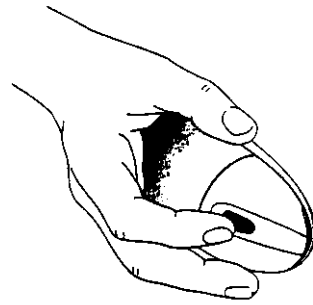
Installing the Software

To take advantage of all the features of your mouse, please install the software that comes with the product.

1. Turn on your computer and start Windows 95 (or Windows 3.1x or Windows NT 4.0).
2. Insert the software diskette into drive A or B.
3. For Windows 95 or Windows NT 4.0, press Start on the Taskbar and select Run. From the Run dialog box, select (or type) A:\SETUP or B:\SETUP in the Run dialog box. Click OK.
4. For Windows 3.1x, open the File menu and choose the Run command. Windows displays the Run dialog box. In the Command Line text box, type: A:\SETUP (or B:\SETUP). Click OK.
5. Follow the on-screen instructions.

Using Your Cordless Wheel Mouse

Your mouse has a wheel that functions both as a wheel and as a button. Simply click the wheel like you would with a standard mouse button.



The mouse wheel also works like a button.

- To scroll, simply move the wheel.
- To use the wheel like a standard mouse button, click (press down) the wheel.



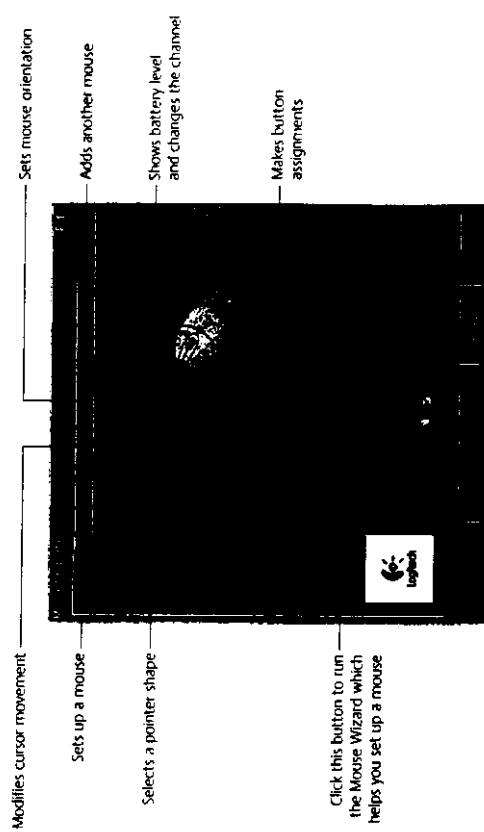
The mouse wheel simplifies scrolling.

Scrolling and Zooming with the Mouse

| Task | What Is It? | How to Do It? |
|--------------|--|--|
| Wheel Scroll | Use Wheel Scroll for precise up and down movement. | To scroll up, move the wheel forward; to scroll down, move the wheel back. |
| AutoScroll | Use AutoScroll in Windows 95, Windows NT 4.0, and Microsoft Office 97 compatible applications to scroll through large documents. AutoScroll allows you to scroll a document automatically without having to move the mouse continuously. | Assign AutoScroll to a button on the mouse if it is not already assigned. Place the cursor in an application. Press the mouse button assigned to AutoScroll. The AutoScroll icon appears. Move the mouse once in the direction you want to scroll (vertical, horizontal, or diagonal). The farther you move the pointer from the starting point, the faster the scrolling. To stop AutoScroll, press any mouse button. |
| Zoom | Use Zoom to either magnify or demagnify the view of a document in an application that supports it. | Place the cursor in an application that is Microsoft Office 97 compatible. Press and hold the Ctrl key on the keyboard, then to zoom in, move the wheel forward; to zoom out, move the wheel backwards. |

Using the Software in Windows 95/Windows NT 4.0

The MouseWare software includes features for making button assignments, controlling cursor movement, and setting up the mouse. To access the MouseWare software, double-click the mouse icon on the Windows 95/Windows NT 4.0 Taskbar, or start MouseWare from the Control Panel. The Mouse Properties tabs display, as shown below. Choose from the available options to configure the mouse.



Modifies cursor movement

Sets up a mouse

Selects a pointer shape

Click this button to run the Mouse Wizard which helps you set up a mouse

Sets mouse orientation

Adds another mouse

Shows battery level and changes the channel

Makes button assignments

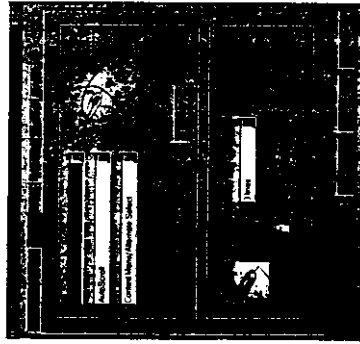
Choosing Options for the Mouse

Need help choosing options? Let the Mouse Wizard show you how. To begin, go to the Mouse Properties. To do this, click Start on the Windows 95/Windows NT 4.0 Taskbar, then select Settings, Control Panel, then double-click the Mouse icon. Now choose the Quick Setup tab and click the Device Setup button. Follow the on-screen instructions.



Making Button Assignments

Assign special functions to mouse buttons using the Buttons tab. The Buttons tab is part of Mouse Properties.



Click the down arrow to select a function for a button. Click the Options button to specify settings for AutoScroll, Universal Scroll, CyberJump™, HyperJump and Double-Click Timing.

For more information click the Help button.

Using the Mouse Icon on the Windows Taskbar

A mouse icon appears on the Windows Taskbar after MouseWare has been installed. This icon makes it possible for you to display the mouse property sheet quickly by simply double-clicking the mouse icon.

Executing CyberJump and HyperJump Commands

CyberJump and HyperJump combine eight commonly used tasks for Windows 95/Windows NT 4.0 into one convenient grid so you do not have to point to various parts of the screen to execute commands. Before you can use CyberJump or HyperJump, you must first assign either function to a mouse button. With your mouse, press the assigned button to display the CyberJump or HyperJump grid (both grids are shown on the next page). Move the cursor to an icon on the grid, then click to execute a command.

Note To perform a double-click with the button assigned to CyberJump or HyperJump, first choose the Double-Click Option in the CyberJump or HyperJump options dialog box (you can access this options dialog box by displaying the Buttons tab of the Mouse Properties, by clicking the Options button on the Buttons tab, then by selecting the HyperJump/CyberJump tab within the Options dialog box). Then press and release the button quickly. To display the CyberJump or HyperJump grid, press and hold down the assigned button.

CyberJump for the Internet* under Windows 95/Windows NT 4.0

| | |
|--------------------------|---------------------------------------|
| Menu | Activates the HyperMenu. |
| Go to Bookmark | Displays bookmark window. |
| Add Bookmark | Adds current page to bookmark window. |
| Vertical Scroll | Jumps to the vertical scroll bar. |
| Stop | Halts current page from down loading. |
| Horizontal Scroll | Jumps to the horizontal scroll bar. |
| Start | Activates the Windows Start Menu. |
| Go Back | Returns to previous page. |

HyperJump for Windows 95/Windows NT 4.0

| | |
|--------------------------|--|
| Menu | Activates the HyperMenu. |
| Minimize | Minimizes the window. |
| Close | Closes the window. |
| Vertical Scroll | Jumps to the vertical scroll bar. |
| Resize | Jumps to the Size Grip (resizes window). |
| Horizontal Scroll | Jumps to the horizontal scroll bar. |
| Start | Activates the Windows Start Menu. |
| Recall | Recalls the last active window. |

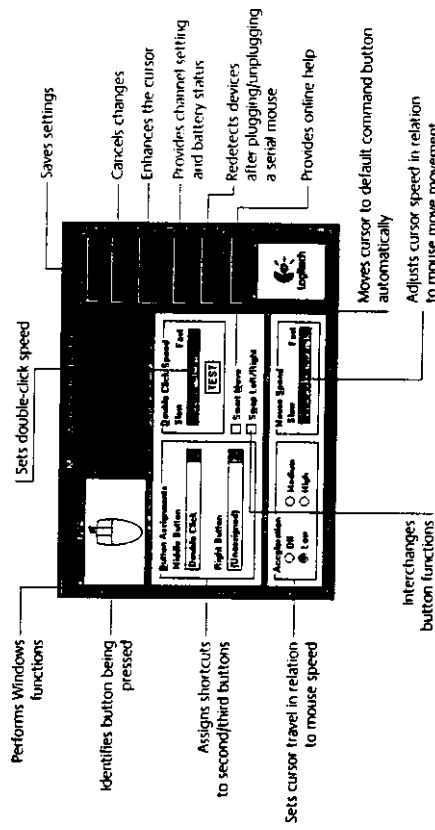
These functions are also available as individual assignments on the Buttons tab.

Using the Software in Windows 3.1x

Double-click the MouseWare icon located in the Logitech MouseWare group window (or in the Windows Control Panel). Choose from the available options to configure the mouse. **Note that Scroll and Zoom as well as CyberJump and HyperJump functions are not supported in Windows 3.1x.**

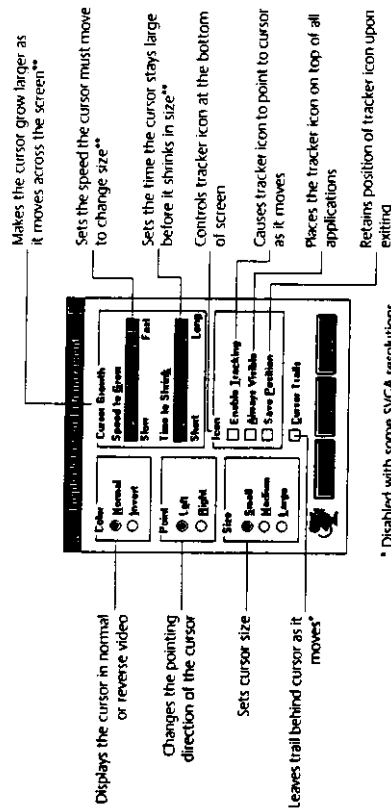
* Designed for Netscape 3.x/4.0, Microsoft Internet Explorer 3.x.

The MouseWare Control Center in Windows 3.1x



Cursor Enhancement in Windows 3.1x

Use the Cursor Enhancement dialog box to customize the cursor. To display the dialog box, click the Cursor button in the Mouse Control Center.



Button Assignments in Windows 3.1x

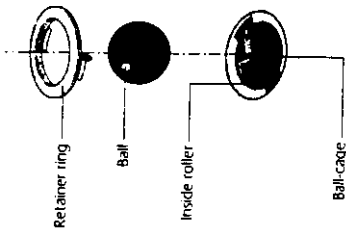
MouseWare allows you to assign functions to three mouse buttons and replaces frequently used tasks, such as Double-Click, Draglock, etc., to a single button click. To override a button assignment temporarily so you can use an application-specific feature, press the Control key while clicking the button to be overridden.

5

Mouse Maintenance

If the cursor skips or moves abnormally, clean the ball of your mouse.

1. **Remove the retainer ring.** On the bottom of the mouse, twist the retainer ring counter clockwise to remove it.
2. **Remove the ball and wipe it with a clean, lint-free cloth, then blow carefully into the ball-cage to dislodge dust and lint.** Look for a buildup of dirt on the rubber roller(s) inside the ball-cage.
3. **If dirty, clean the roller(s) using a cotton swab moistened lightly with isopropyl (rubbing) alcohol.** After cleaning, make sure the roller(s) are still centered in their channels. Make sure that fluff from the swab is not left on the roller(s).
4. **Replace the ball and retainer ring.**



6

Troubleshooting

Mouse Does Not Work upon Installation

Try one or more of the following:

- Make sure you have connected the receiver correctly. The receiver cable goes into the computer's PS/2 mouse port or serial port.
- For optimal performance, place the receiver at least 8 inches or 20 centimeters away from other electrical devices, such as the computer, the computer monitor, or external storage drives.
- Make sure you have installed the batteries correctly.
- Establish communication between the receiver and the mouse. Press the Connect button on the receiver, then press the Channel button under the mouse.
- If you are working on a metallic surface, try using a mouse pad and turning the receiver on its side for better reception.

Mouse Not Detected

When using the mouse, it may not be detected by the computer. To remedy this problem, try the following:

- Make sure the receiver cable is plugged into the right port – serial or PS/2 mouse port. **Do not plug or unplug the receiver cable while the computer is running.**
- Make sure your serial (or PS/2) port has the proper configuration. Refer to your computer documentation for the correct port configuration.
- You may have other system devices (e.g. a modem card) that conflict with the mouse. Check the IRQ/address settings of these devices for conflicts, and change the settings as required. Refer to your computer documentation to make these changes.
- To determine whether the problem is mouse or system related, try the mouse on a second system or a different mouse on your current system.

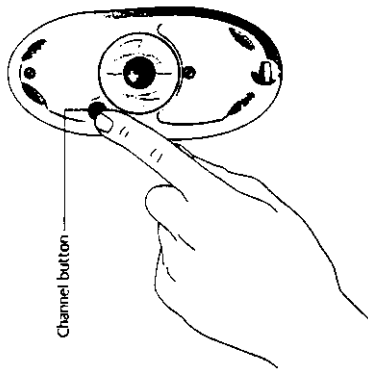
The Screen Cursor Does Not Move Properly on the Screen

Clean the mouse ball and roller(s). See "Mouse Maintenance" for more information.

Try changing the position of the receiver.

It is possible that the receiver may be too far from the mouse. Or the computer monitor (or a large metal object) may be interfering with the receiver's radio reception. Also, the mouse batteries may be nearly dead. Check the mouse batteries as described in "Mouse Does Not Work upon Installation" and replace the batteries if required.

You may also need to change the channel for the mouse. The computer must be on and the receiver plugged in correctly. Press the Channel button on the bottom of the mouse. The green Connect light should blink on the receiver.



Información sanitaria importante

Según algunas investigaciones, realizar tareas repetidas durante largos períodos de tiempo, una disposición inadecuada del lugar de trabajo, una posición incorrecta del cuerpo y hábitos de trabajo deficientes pueden ocasionar cansancio y lesiones físicas en nervios, tendones y músculos.

Ante cualquier síntoma de dolor, rigidez, hormigueo, debilidad, inflamación, quemadura, calambre o agarrotamiento de manos, muñecas, brazos, hombros, cuello o espalda durante la utilización del teclado, el mouse o el trackball, consulte a un profesional sanitario titulado.

PARA REDUCIR EL RIESGO DE LESIONES, SIGA ESTAS PRECAUCIONES:

- Descanse con frecuencia durante algunos minutos. Levántese y pasee en varias ocasiones cada hora.
- Combine la naturaleza de sus tareas durante la jornada. Realice distintos movimientos con manos y brazos de vez en cuando.
- No ejerza presión sobre el teclado y utilice el mouse y el trackball sin aferrarse a ellos para un mayor control.
- Mantenga los hombros relajados y los codos a los lados. Coloque el teclado y el mouse de modo que no tenga que estirarse para utilizarlos.
- Ajuste la silla y el teclado para que los antebrazos y las muñecas estén en línea recta.
- Procure no reposar las muñecas sobre bordes angulosos.
- Haga uso de las opciones de software del teclado, el mouse o el trackball para reducir al mínimo los movimientos repetitivos o incómodos y evitar así la acumulación de tensión en manos, muñecas y brazos.

Si desea obtener más información sobre cómo reducir el riesgo de lesiones, consulte las *Recomendaciones para evitar el cansancio* incluidas con este producto o lea dichas recomendaciones en la sede de Logitech en Internet: www.logitech.com.