

The Internet Keys

There are four or five programmable Internet keys on your keyboard, which you must set up before using. (Refer to the *Quick Start Guide* that ships with your keyboard or desktop system for the location of these special keys, and for the location of the other iTouch keys.) You can customize the Internet keys to suit your specific needs. For example, you can set up the Internet keys as follows:



The My Home™ key accesses your home web page or favorite Internet address



The E-mail key launches your e-mail application



The Search key displays a menu of Internet search engines



The Go key starts an application, accesses a web site, or displays a menu of applications and web sites



The Logitech® key (found only on the Cordless iTouch™ Pro keyboard) starts an application, accesses a web site, or displays a menu of applications and web sites, like the Go key example above.

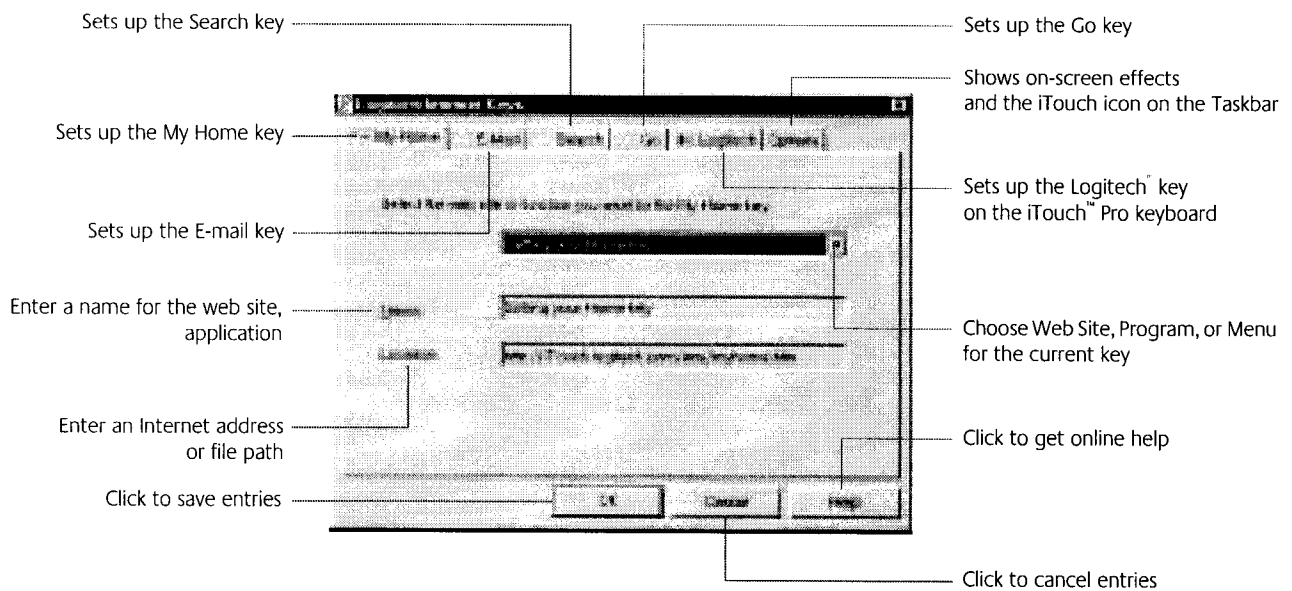
The Internet keys have built-in flexibility. If you find it more convenient, for example, to program the Search key to access a favorite web site instead of displaying a menu of Internet search engines, the iTouch software makes it very easy for you to do so, and provides visual feedback on your screen for the operations described above.

Launching the iTouch™ Software

Launch the iTouch™ software by double-clicking the iTouch™ icon on the Windows® Taskbar.

Setting Up the Internet Keys

1. **Connect to the Internet so you can easily assign Internet addresses to the iTouch™ Internet keys, if desired.** Note that you must have an Internet account.
2. **Launch the iTouch™ software.** The Logitech® Internet Keys dialog box displays.
3. **Choose an Internet key to set up by clicking a “tab,” such as the My Home™ tab or the Go tab.**

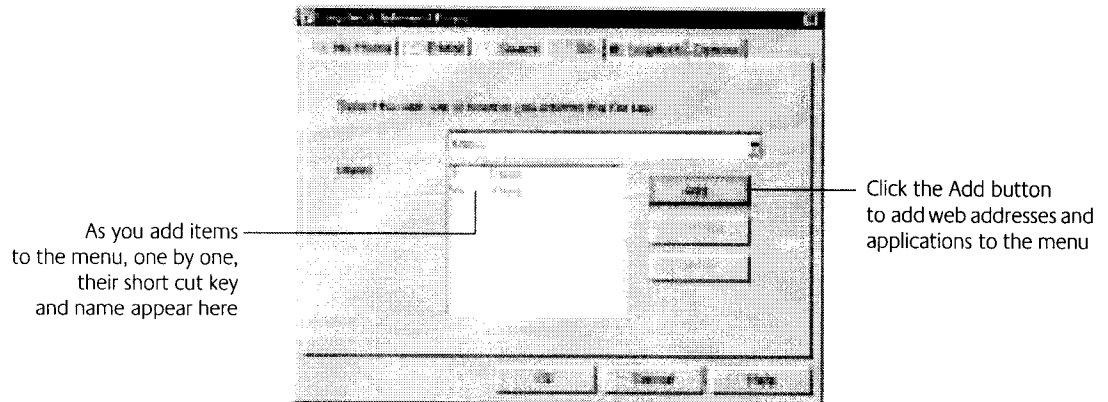


4. **Choose “Web Site,” “Program,” or “Menu” for the key you are customizing.** Click the down arrow to display these choices, then highlight your choice by clicking it.

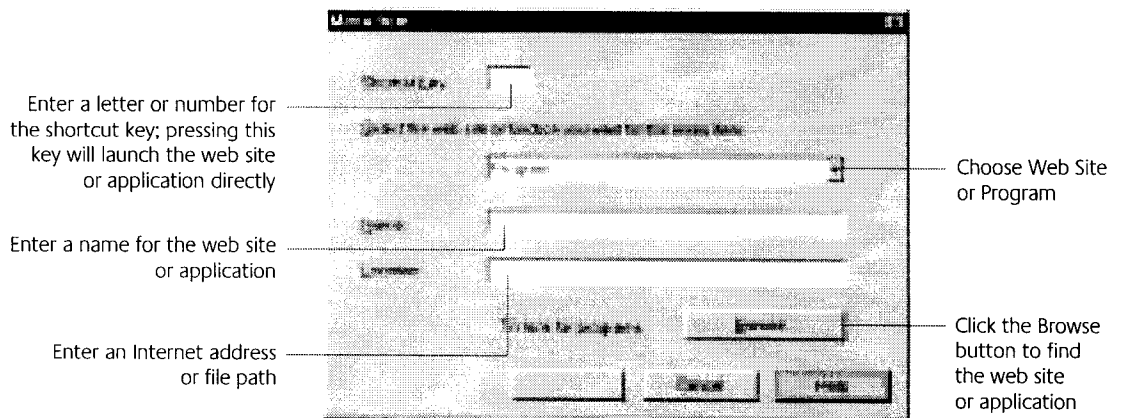


- **Web Site** links a web site to the key.
- **Program** links an application to the key.
- **Menu** links a menu of web addresses, Internet search engines, and/or applications to the key, which you will need to specify. The Internet Keys dialog box has a different layout when Menu is chosen.

5. Enter information about the web site, program, or menu.



- **Web Site.** You can use the Browse button under the Location box of the Logitech Internet Keys dialog box to open your web browser (if it is not already running) and to navigate to the desired site. Enter a name for the web site in the Name box, then enter the web address in the Location box.
- **Program.** Use the Browse button under the Location box to find the application. Enter a name for the application in the Name box, then enter a file path in the Location box.
- **Menu.** Click the Add button to display the Menu Item dialog box. Enter information in this dialog box, as indicated below.



When specifying an Internet address, you can navigate to the desired web site, and once there, press CTRL and the iTouch key you are setting up (e.g., the Go key) to have the Internet address entered automatically in the Location box.

6. **Click the OK button to save your changes.** To modify your entries or to make changes to your iTouch keys at a later time, refer to Steps 1-5.

Assigning a Web Site to an Internet Key Quickly

You can easily assign a web site to an iTouch™ key while surfing the Net.

1. **While logged on to the Internet, navigate to the web site to which you want to assign an iTouch key.**
2. **After you have reached the desired web site, press CTRL and the iTouch key you are assigning.** For example, if you are assigning the My Home™ key, hold down the CTRL key and press the My Home key.

The Multimedia Keys

Play CD music and DVD music and movies (sound card or AV board required) with the Multimedia keys.

- ▶/|| **Play/Pause.** Plays or pauses the CD/DVD.
- **Stop.** Stops play.
- ◀◀ **Previous Track.** Plays the previous track.
- ▶▶ **Next Track.** Plays the next track.
- 🔇 **Mute.** Greatly reduces the sound volume.
- ⬆ **Volume Up.** Increases sound volume.
- ⬇ **Volume Down.** Decreases sound volume.

The iTouch™ software provides visual feedback on your screen for each of these operations. To turn off visual feedback, open the iTouch software and click the Options tab. Remove the “check mark” in the box for “Show On-Screen Key Effects.”

Using the Suspend Key

Access the Windows® Shut Down dialog box, where you can put your system on stand-by or shut down Windows.

Getting Additional Information about the iTouch™ Keys

A quick way to get information about an Internet key, the *first* time you use that key, is to use the Logitech® iTouch™ web site.

- 1. Connect to the Internet to access the Logitech iTouch web site.**
- 2. Press the key you want information about, then click “Yes” in the dialog box that displays.**
- 3. Read the instructions on setting up the button.**

You can also obtain information about the iTouch software by clicking a help key while using the iTouch software, or by double-clicking the help folder in the Logitech iTouch program group. To access the Logitech iTouch program group from the Windows® Taskbar, choose Start, Programs, Logitech iTouch, then help.

For Macintosh® Users

This section of the Online User's Guide is for Macintosh® users. Refer to this section to learn how to use your mouse or trackball with your Macintosh computer.

Important Ergonomic Information

Some research suggests that long periods of repetitive motion using an improperly setup workspace, incorrect body position, and poor work habits may be associated with physical discomfort and injury to nerves, tendons, and muscles.

If you feel pain, numbness, tingling, weakness, swelling, burning, cramping, or stiffness in your hands, wrists, arms, shoulders, neck, or back while using a keyboard, mouse, or trackball, see a qualified health professional.

TO REDUCE THE RISK OF INJURY, FOLLOW THESE PRECAUTIONS:

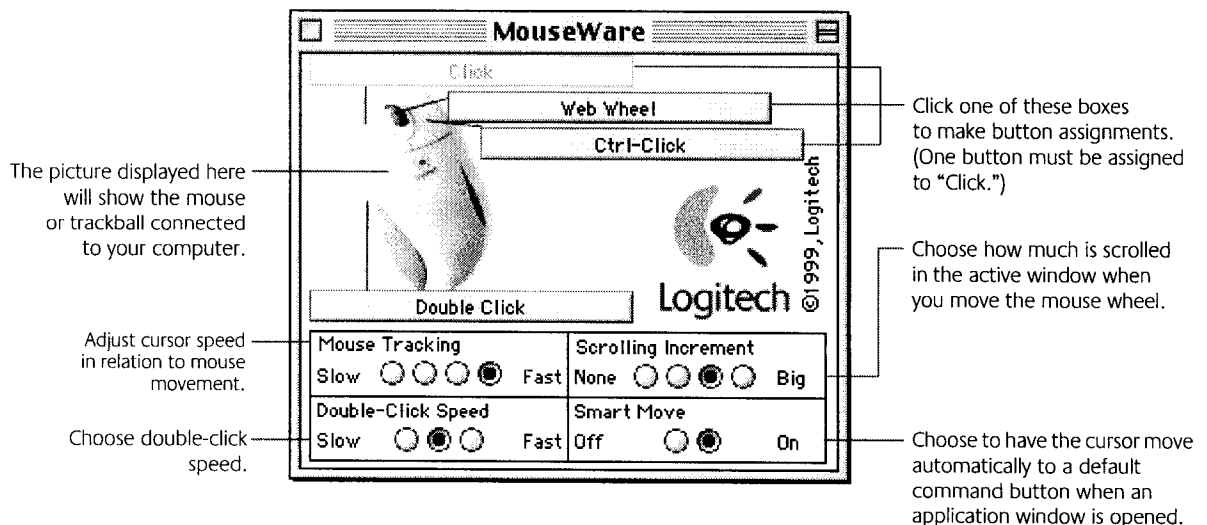
- Take frequent short breaks. Get up and walk around several times every hour.
- Vary your tasks throughout the day. Do something different with your hands and arms from time to time.
- Use a light touch on the keyboard and for better control of the mouse or trackball.
- Keep your shoulders relaxed with your elbows at your side. Position your keyboard and mouse so you do not have to reach to use them.

- Adjust your chair and keyboard so your upper arms and wrists are straight.
- Avoid resting your wrists on sharp edges. If you use a wrist or palm rest, do not use it while typing.
- Use the software features of your keyboard, mouse, or trackball to help reduce stress to your arms, wrists, or hands by minimizing repetitive or awkward motions.

For additional information that may reduce your risk of injury, read the *Comfort Guidelines* that comes with your product, or read these same guidelines on Logitech's Internet site: www.logitech.com

Customizing the Mouse or Trackball

The Logitech® MouseWare® software includes features for making **button assignments, controlling the amount of scrolling, and setting up the mouse or trackball.** To access MouseWare, select MouseWare in the Control Panels. **Choose from the available options to set up your mouse or trackball.**



Battery Warning — Important!

(Cordless Devices)

When battery power is low for the mouse or trackball, the MouseWare® software displays a dialog box on your desktop suggesting that you change the batteries. When replacing the batteries, use alkalines. You may use other battery types, but do not mix them with alkalines. Discard all used batteries according to the battery manufacturer's instructions.

Exercise care when handling batteries. When batteries are misused, they may explode or leak, causing burns and personal injury. Do not open a battery or mutilate, dispose of in a fire, expose to heat above 212° F (100° C), immerse in water, install improperly, or recharge. Conducting materials, such as rings, bracelets, and keys, can short out a battery causing it to overheat and possibly leak or explode. When you are not using your cordless device for long periods of time, remove the batteries and store them in a dry place at normal room temperature.

Using the Mouse or Trackball to Scroll in Documents

If your mouse or trackball has a wheel, it functions both as a wheel and as a button. As a wheel, you can use it to scroll both vertically and horizontally. To scroll, simply move the wheel. To use the wheel like a standard mouse button, click (press down) the wheel.

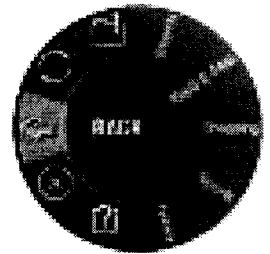
Read the tables on this page to find out more about scrolling with your mouse or trackball.

Scrolling with a Wheel Mouse or Wheel Trackball

Task	What is It?	How to Do It?
Wheel Scroll	Use Wheel Scroll for precise up and down movement.	To scroll up, move the wheel forward; to scroll down, move the wheel back.
Horizontal Scroll	Use Horizontal Scroll to scroll left to right, or right to left, whenever horizontal scroll bars are present in the active window.	When both vertical and horizontal scroll bars are present in a window, press the Alt and Option keys on the keyboard, then move the wheel forward to scroll left; move the wheel backward to scroll right. If no vertical scroll bars are present, simply move the wheel to scroll horizontally.

Using the WebWheel™ to Surf the Internet

The Logitech® WebWheel™ helps you work faster and with greater ease when using your Internet web browser. The WebWheel has three of the most commonly used web browsing commands along with five web addresses, which you can personalize.









1. Launch your Internet browser.

Note The WebWheel browser command icons (Back, Stop, Reload, Bookmarks/Favorites) will appear with a small red “X” when you are not in your web browser.

2. Click and depress the assigned WebWheel button on your mouse or trackball.

3. Roll the wheel-button, or move your mouse, to highlight a selection on the WebWheel.

-  **Back.** Returns you to the previous web page. Since the Back function is always the starting point when launching the WebWheel, double-clicking the wheel-button executes the Back function.
-  **Stop.** Halts the loading of a web page.
-  **Reload.** Reloads or refreshes the current web page.
-  **Open Bookmarks/Favorites.** Opens your bookmarks or favorites page.
-  **View WebWheel Help.** Opens the WebWheel help file.
-  **Go to a Web Address.** Opens the designated URL (Internet address) or one of the other web address selections on the WebWheel.

4. Click the highlighted WebWheel button, or press your click-select button on your mouse or trackball.

Assigning a Favorite Web Address to the WebWheel™

The WebWheel™ comes set up with five web addresses. These web pages give you an overview of possible addresses that you may wish to assign to the WebWheel. You may change these assignments to Internet addresses of your own choosing.

Note Some web addresses may be “locked”; that is, customization will not be possible. If you attempt to reassign a locked web address, you will receive a message telling you that reassignment is not permitted.

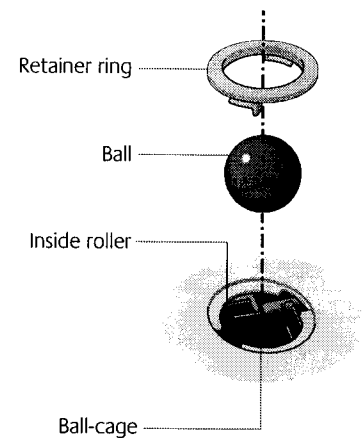
1. **Launch the WebWheel by pressing the assigned WebWheel button on your mouse or trackball.**
2. **Choose the section of the WebWheel where the web address is to be placed by rolling the mouse/trackball wheel or moving the mouse.** Note that WebWheel browser command buttons cannot be changed.

3. To assign the web address, press and hold the CTRL key while clicking the WebWheel button you wish to change.
4. In the dialog box that displays, enter a name and a web address, then click OK.

Maintaining the Mouse

If the cursor skips or moves abnormally, clean the ball of your mouse.

1. **Remove the retainer ring to remove the ball.** On the bottom of the mouse, press in the direction of the Open arrow imprinted on the retainer ring cover.
2. **Wipe the ball with a clean, lint-free cloth, then blow carefully into the ball-cage to dislodge dust and lint.**
Look for a build-up of dirt on the rubber roller(s) inside the ball-cage.
3. **If dirty, clean the roller(s) using a cotton swab moistened lightly with isopropyl (rubbing) alcohol.** After cleaning, make sure the roller(s) are still centered in their channels. Make sure that fluff from the swab is not left on the roller(s).
4. **Replace the ball and retainer ring.**



Maintaining the Trackball

Logitech® trackballs are very reliable, and thanks to Marble® Technology, they are especially resistant to dirt and dust while most other trackballs need regular cleaning. In case a particle of dirt blocks or causes the ball to move less smoothly, you should clean the ball as follows:

1. **Turn off your computer and unplug your trackball.**
2. **For TrackMan® Marble® Wheel, insert a straight pin into the indentation on the retainer ring and pull counter-clockwise to remove the ring.**
3. **For TrackMan® Marble® FX, push the ball in the direction of the larger opening to remove the ball from its socket.**
4. **Wipe the ball with a clean, lint-free cloth, then blow carefully into the socket or ball-cage to dislodge dust and lint.**

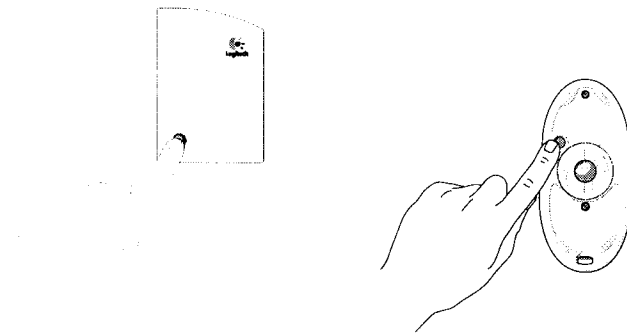
Note When cleaning TrackMan® Marble®, be careful not to remove the small contact points on which the trackball rests.

5. **Replace the ball (or the ball and retainer ring for the TrackMan Marble Wheel).**
6. **Plug in your trackball and turn on your computer.**

Troubleshooting the Mouse or Trackball

The Cordless Mouse Does Not Work after Installation

- Make sure you have connected the receiver correctly. The receiver cable goes into the computer's USB port. **For optimal performance, place the receiver at least 8 inches or 20 centimeters away from other electrical devices, such as the computer, the computer monitor, or external storage drives.**
- Make sure you have installed the batteries correctly.
- Establish communication between the receiver and the mouse. Press the Connect button on the receiver, then press the Connect button under the mouse.



- If you are working on a metallic surface, try using a mouse pad and turning the receiver on its side for better reception.

The Cordless Mouse Does Not Work after Changing the Batteries

- Check to make sure the batteries you have installed are not dead.
- Try the batteries in another device.
- You may also need to re-establish the connection between the mouse and its receiver. To do this, press the Connect button on the receiver, then press the Connect button on the bottom of the mouse.

The Screen Cursor Does Not Move Properly on the Screen

- Try cleaning the mouse ball and ball cage. If you have a trackball, remove its ball for cleaning. In either case, reinsert the ball for use after you have cleaned it.
- If you have a cordless mouse, try changing the position of the receiver. It is possible that the receiver may be too far from the mouse. Or the computer monitor (or a large metal object) may be interfering with the receiver's radio reception. Also, the mouse batteries may be low. Check the mouse batteries as described previously. You may also need to re-establish the connection between the mouse and its receiver. To do this, press the Connect button on the receiver, then press the Connect button on the bottom of the mouse.
- Make sure the mouse or trackball cable is plugged into the USB port. When installing the mouse or trackball, install the MouseWare® software *before* connecting the mouse or trackball cable. Reboot the system.

Mouse or Trackball Not Detected

- Did you install the MouseWare® Software? Be sure to install the software first before connecting the mouse or trackball.
- Make sure the mouse or trackball cable is plugged into a USB port.
- Reboot the system.
- For more assistance, please refer to our Logitech web site at **www.logitech.com**

Contacts *

Benelux (B, LUX, NL) LOGITECH Benelux	Bedrijvenpark Lindenholt Kerkenbos 1045 NL - 6546 BB <u>Nijmegen</u>	☎ +31 (0)10 243 88 97 <i>Nederlands</i> ☎ +32 (0)2 626 89 63 <i>Français (Belg.)</i> ☎ +32 (0)2 626 89 61 <i>Vlaams (Belg.)</i>	☎ +31 (0)10 243 88 98 <i>Nederlands</i> ☎ +32 (0)2 626 89 62 <i>Français (Belg.)</i> ☎ +32 (0)2 626 89 60 <i>Vlaams (Belg.)</i>
Denmark LOGITECH Representation	Mesterlodden 16 DK - 2820 <u>Gentofte</u>	☎ +45-35 44 55 16	☎ +45-35 44 55 17
Deutschland & Eastern European countries LOGITECH GmbH	Gabriele-Münter-Strasse 3 D - 82110 <u>Germering</u>	☎ +49 (0)69-92 032 165	☎ +49 (0)69-92 032 166
España LOGITECH S.A.	Oficina de representación en España Calle Nicaragua, 48 2º 1ª E - 08029 <u>Barcelona</u>	☎ +34 91-375 33 68	☎ +34 91-375 33 69
France LOGITECH France SARL	26-28 Rue Danielle Casanova F - 75002 <u>Paris</u>	☎ +33 (0)1-43 62 34 13	☎ +33 (0)1-43 62 34 14
Hungary IMSZ Kft. (Logitech)	Att. Kovacs Dora / Koszegi Mihaly Vamhaz Krt. 10. 1/13 1053 <u>Budapest</u> - HUNGARY	☎ +41-21 863 54 00 <i>English</i>	☎ +41-21 863 54 01 <i>English</i>
Italia LOGITECH Italia S.r.l	Centro Direzionale Colleoni Palazzo Andromeda 3 I - 20041 <u>Agrate Brianza</u> , MI	☎ +39-02 215 1062	☎ +39-02 214 0871
Österreich LOGITECH Repräsentanz	Göra 580, Postfach 77 A - 5580 <u>Tamsweg</u>	☎ +43 (0)1 502 221 349	☎ +43 (0)1 502 221 348
Schweiz/Suisse/Svizzera LOGITECH Switzerland	Täferstrasse 16 CH - 5405 <u>Baden-Dättwil</u>	☎ D +41 (0)21 863 54 10 ☎ F +41 (0)21 863 54 30 ☎ I +41 (0)21 863 54 60	☎ D +41 (0)21 863 54 11 ☎ F +41 (0)21 863 54 31 ☎ I +41 (0)21 863 54 61
Sweden, Iceland, Norway & Finland Logitech Representation	Geometrivägen 3-7 S - 141 75 <u>Kungens Kurva</u>	☎ +46 (0)8-519 920 19 <i>Sweden</i> ☎ +47 (0)23 500 084 <i>Norway</i> ☎ +358 (0)9 817 100 21 <i>Finland</i>	☎ +46 (0)8-519 920 20 <i>Sweden</i> ☎ +47 (0)23 500 083 <i>Norway</i> ☎ +358 (0)9 817 100 21 <i>Finland</i>
UK + Eire LOGI (U.K.) Ltd.	The Old Court House 267-273 High Street GB - <u>Dorking</u> , RH4 1RL, Surrey	☎ +44 (0)171 309 01 27	☎ +44 (0)171 309 01 26

Logitech Headquarters

European, Middle Eastern & African Headquarters LOGITECH Trading S.A.	Moulin-du-Choc CH - 1122 <u>Romanel-sur-Morges</u>	☎ +41 (0)21 863 54 00 <i>English</i> Fax +41 (0)21 863 54 02	☎ +41 (0)21 863 54 01 <i>English</i> Fax +41 (0)21 863 54 02
Corporate Headquarters LOGITECH Inc.	6505 Kaiser Drive USA - <u>Fremont</u> , CA 94555	☎ (800) 231-7717	☎ +1 (702) 269 3457
Asian Pacific Headquarters LOGITECH Far East Ltd.	#2 Creation Road IV Science-Based - Industrial Park ROC - <u>Hsinchu</u> , Taiwan		☎ +886 (2) 27466601 x2206
Australia Logitech Australia Computer Peripherals Pty Ltd.	Level 2, 633 Pittwater Road AUS - <u>Dee Why</u> NSW 2099, Australia		☎ +61 (02)9804 6968 ☎ +61 (02)9972 3561
Canada Sales & Marketing Office	5025 Orbitor Dr., Bldg. 6, Suite 200 CDN - <u>Mississauga</u> , ON L4W 4Y5	☎ (800) 231-7717	☎ +1 702 269 3457
Japan LOGICOOL Co. Ltd.	Ryoshin Ginza East Mirror Bldg., 7F 3-15-10 Ginza Chuo-ku, <u>Tokyo</u> , Japan 104-0061		☎ +81 (3) 3543 2122 Fax +81 (3) 3543 2911
In Latin America and the Caribbean :	Contact your local authorized distributor, or call our Customer Support Hotline in the USA, at ☎ +1 (702) 269 3457.		

World Wide Web: <http://www.logitech.com>

FTP: <ftp://ftp.logitech.com/pub>

* Refer to your Registration Card for the most up-to-date addresses and phone numbers.

Note For USA and Canadian customers only: please read the following prior to exchanging or returning your product. To exchange or return your product within the first 30 days, we recommend returning it to the point of purchase. If you return or exchange your product through Logitech, you must first contact Customer Support to obtain a Return Merchandise Authorization (RMA) number. Customer Support will give you an RMA number and a special address for the exchange.

Logitech® Product Warranties

Mouse: Cordless MouseMan® Wheel

© 2000 Logitech. All Rights Reserved. Logitech, the Logitech logo, and other Logitech marks are owned by Logitech and may be registered. All other trademarks are the property of their respective owners. Logitech assumes no responsibility for any errors that may appear in this manual. Information contained herein is subject to change without notice.

Software License Agreement. LOGITECH IS WILLING TO LICENSE THE ENCLOSED SOFTWARE TO YOU ONLY ON THE CONDITION THAT YOU ACCEPT ALL OF THE TERMS CONTAINED IN THIS LICENSE AGREEMENT. **This is a legal agreement between you (either an individual end-user or an entity) and Logitech. By opening the software package, you are agreeing to be bound by the terms and conditions of the Agreement. If you do not agree to the terms of this Agreement, promptly return the software package and other items that are part of this product in their original package with your payment receipt to your point of purchase for a full refund.** **Grant of License.** Logitech and its suppliers grant you a nonexclusive license to use one copy of the enclosed software program ("Software") on one computer only with the Logitech product you have purchased. No other rights are granted. The Software is in use if it is loaded on the computer's permanent or temporary memory. For backup purposes only, you may make one copy of the Software. You must include on the backup copy all copyright and other notices included on the Software as supplied by Logitech. Installation on a network server for the sole purpose of your internal distribution of the Software is permitted only if you have purchased an individual Software package for each networked computer to which the Software is distributed.

Restrictions. Logitech and its suppliers retain ownership of the Software. You shall not decompile, disassemble, reverse-engineer, or modify the Software in any way. You may not transmit the Software over a network (except as expressly permitted above), by telephone, or electronically using any means. You may not transfer the Software except upon a permanent transfer of the enclosed Logitech product provided that all Software updates are included in the transfer, you do not retain a copy of the Software, and the transferee agrees to be bound by the terms and conditions in this license. Upon any violation of any of the provisions of this Agreement, rights to use the Software shall automatically terminate and the Software must be returned to Logitech or all copies of the Software destroyed. **Limited Product Warranty.** Logitech warrants that the hardware accompanying this documentation shall be free from significant defects in material and workmanship for a period of five years from the date of purchase. Logitech also warrants that the software accompanying this documentation will perform substantially in accordance with the documentation for a period of 90 days from the date of purchase. Logitech's hardware and software warranty is nontransferable and is limited to the original purchaser. **Product Remedies.** Logitech's entire liability and the Licensee's exclusive remedy for any breach of warranty, shall be, at Logitech's option, either (a) return of the price paid or (b) repair or replacement of the hardware or software, provided that the hardware or software is returned to the point of purchase, with a copy of the sales receipt. Any replacement hardware or software will be warranted for the remainder of the original warranty period or 30 days for the hardware and 30 days for the software, whichever is longer. These remedies are void if failure of the hardware or software has resulted from accident, abuse, or misapplication.

LIMITATION OF LIABILITY. THE WARRANTIES SET FORTH IN THIS AGREEMENT REPLACE ALL OTHER WARRANTIES. LOGITECH EXPRESSLY DISCLAIMS ALL OTHER WARRANTIES, INCLUDING, BUT NOT LIMITED TO, THE IMPLIED WARRANTIES OF MERCHANTABILITY AND FITNESS FOR A PARTICULAR PURPOSE AND NON-INFRINGEMENT OF THIRD-PARTY RIGHTS WITH RESPECT TO THE DOCUMENTATION, SOFTWARE, AND HARDWARE. NO LOGITECH DEALER, AGENT, OR EMPLOYEE IS AUTHORIZED TO MAKE ANY MODIFICATION, EXTENSION, OR ADDITION TO THIS WARRANTY. IN NO EVENT WILL LOGITECH OR ITS SUPPLIERS BE LIABLE FOR ANY COSTS OF PROCUREMENT OF SUBSTITUTE PRODUCTS OR SERVICES, LOST PROFITS, LOSS OF INFORMATION OR DATA, OR ANY OTHER SPECIAL, INDIRECT, CONSEQUENTIAL, OR INCIDENTAL DAMAGES ARISING IN ANY WAY OUT OF THE SALE OF, USE OF, OR INABILITY TO USE ANY LOGITECH PRODUCT OR SERVICE, EVEN IF LOGITECH HAS BEEN ADVISED OF THE POSSIBILITY OF SUCH DAMAGES. IN NO CASE SHALL LOGITECH'S LIABILITY EXCEED THE ACTUAL MONEY PAID FOR THE PRODUCTS AT ISSUE. Because some jurisdictions do not allow the limitation of implied warranties or liability for incidental, consequential, special, or indirect damages, the above limitation may not always apply. The above limitations will not apply in case of personal injury where and to the extent that applicable law requires such liability.

U.S. Government Restricted Rights. The Software is provided to the U.S. Government only with restricted rights and limited rights. Use, duplication, or disclosure by the U.S. Government is subject to restrictions set forth in 48 C.F.R. 2.101 (October 1995), consisting of "Commercial Computer Software" and "Commercial Computer Software Documentation" as such terms are used in 48 C.F.R. 12.212 (September 1995), and in FAR Sections 52-227-14 and 52-227-19 or DFARS Section 52.227-7013 (C) (1) (ii), or their successors, as applicable. Consistent with 48 C.F.R. 12.212 and 48 C.F.R. 227.7202-1 through 227.7204-4 (June 1995), or any successor regulations, this Software is provided to U.S. Government users pursuant to the terms and conditions herein. Contractor/Manufacturer is Logitech Inc., 6505 Kaiser Drive, Fremont, CA 94555.

FCC Compliance and Advisory Statement. This hardware device complies with Part 15 of the FCC Rules. Operation is subject to the following two conditions: 1) this device may not cause harmful interference, and 2) this device must accept any interference received, including interference that may cause undesired operation. This equipment has been tested and found to comply with the limits for a Class B digital device, pursuant to Part 15 of the FCC Rules. These limits are designed to provide reasonable protection against harmful interference in a residential installation. This equipment generates, uses, and can radiate radio frequency energy and, if not installed or used in accordance with the instructions, may cause harmful interference to radio communications. However, there is no guarantee that interference will not occur in a particular installation. If this equipment does cause harmful interference to radio or television reception, which can be determined by turning the equipment off and on, the user is encouraged to try to correct the interference by one or more of the following measures: 1) reorient or relocate the receiving antenna; 2) increase the separation between the equipment and the receiver; 3) connect the equipment to an outlet on a circuit different from that to which the receiver is connected; 4) consult the dealer or an experienced radio/TV technician for help. Any changes or modifications not expressly approved by the party responsible for compliance could void the user's authority to operate the equipment. Where shielded interface cables have been provided with the product or specified additional components or accessories elsewhere defined to be used with the installation of the product, they must be used in order to ensure compliance with FCC regulations.

Canadian DOC Statement. This digital device does not exceed the Class B limits for radio noise emissions from digital apparatus specified in the interference-causing equipment standard entitled "Digital Apparatus," ICES-003 of the Department of Communications.

Cet appareil numérique respecte les limites bruits radioélectriques applicables aux appareils numériques de Classe B prescrites dans la norme sur le matériel brouilleur: "Appareils Numériques," NMB-003 édictée par le Ministère des Communications.

This device complies with RSS-210 of Industry and Science Canada. Operation is subject to the following two conditions: 1) this device may not cause interference, and 2) this device must accept any interference, including interference that may cause undesired operation of the device. Transmitter frequency: 26.995; 27.045; 27.145; 27.195 MHz. Power Output: < 10mV/m @ 3m.

Mouse: Cordless Wheel Mouse

© 2000 Logitech. All Rights Reserved. Logitech, the Logitech logo, and other Logitech marks are owned by Logitech and may be registered. All other trademarks are the property of their respective owners. Logitech assumes no responsibility for any errors that may appear in this manual. Information contained herein is subject to change without notice.

Software License Agreement. LOGITECH IS WILLING TO LICENSE THE ENCLOSED SOFTWARE TO YOU ONLY ON THE CONDITION THAT YOU ACCEPT ALL OF THE TERMS CONTAINED IN THIS LICENSE AGREEMENT. **This is a legal agreement between you (either an individual end-user or an entity) and Logitech. By opening the software package, you are agreeing to be bound by the terms and conditions of the Agreement. If you do not agree to the terms of this Agreement, promptly return the software package and other items that are part of this product in their original package with your payment receipt to your point of purchase for a full refund.** **Grant of License.** Logitech and its suppliers grant you a nonexclusive license to use one copy of the enclosed software program ("Software") on one computer only with the Logitech product you have purchased. No other rights are granted. The Software is in use if it is loaded on the computer's permanent or temporary memory. For backup purposes only, you may make one copy of the Software. You must include on the backup copy all copyright and other notices included on the Software as supplied by Logitech. Installation on a network server for the sole purpose of your internal distribution of the Software is permitted only if you have purchased an individual Software package for each networked computer to which the Software is distributed.

Restrictions. Logitech and its suppliers retain ownership of the Software. You shall not decompile, disassemble, reverse-engineer, or modify the Software in any way. You may not transmit the Software over a network (except as expressly permitted above), by telephone, or electronically using any means. You may not transfer the Software except upon a permanent transfer of the enclosed Logitech product provided that all Software updates are included in the transfer, you do not retain a copy of the Software, and the transferee agrees to be bound by the terms and conditions in this license. Upon any violation of any of the provisions of this Agreement, rights to use the Software shall automatically terminate and the Software must be returned to Logitech or all copies of the Software destroyed.

Limited Product Warranty. Logitech warrants that the hardware accompanying this documentation shall be free from significant defects in material and workmanship for a period of five years from the date of purchase. Logitech also warrants that the software accompanying this documentation will perform substantially in accordance with the documentation for a period of 90 days from the date of purchase. Logitech's hardware and software warranty is nontransferable and is limited to the original purchaser.

Product Remedies. Logitech's entire liability and the Licensee's exclusive remedy for any breach of warranty, shall be, at Logitech's option, either (a) return of the price paid or (b) repair or replacement of the hardware or software, provided that the hardware or software is returned to the point of purchase, with a copy of the sales receipt. Any replacement hardware or software will be warranted for the remainder of the original warranty period or 30 days for the hardware and 30 days for the software, whichever is longer. These remedies are void if failure of the hardware or software has resulted from accident, abuse, or misapplication.

LIMITATION OF LIABILITY. THE WARRANTIES SET FORTH IN THIS AGREEMENT REPLACE ALL OTHER WARRANTIES. LOGITECH EXPRESSLY DISCLAIMS ALL OTHER WARRANTIES, INCLUDING, BUT NOT LIMITED TO, THE IMPLIED WARRANTIES OF MERCHANTABILITY AND FITNESS FOR A PARTICULAR PURPOSE AND NONINFRINGEMENT OF THIRD-PARTY RIGHTS WITH RESPECT TO THE DOCUMENTATION, SOFTWARE, AND HARDWARE. NO LOGITECH DEALER, AGENT, OR EMPLOYEE IS AUTHORIZED TO MAKE ANY MODIFICATION, EXTENSION, OR ADDITION TO THIS WARRANTY. IN NO EVENT WILL LOGITECH OR ITS SUPPLIERS BE LIABLE FOR ANY COSTS OF PROCUREMENT OF SUBSTITUTE PRODUCTS OR SERVICES, LOST PROFITS, LOSS OF INFORMATION OR DATA, OR ANY OTHER SPECIAL, INDIRECT, CONSEQUENTIAL, OR INCIDENTAL DAMAGES ARISING IN ANY WAY OUT OF THE SALE OF, USE OF, OR INABILITY TO USE ANY LOGITECH PRODUCT OR SERVICE, EVEN IF LOGITECH HAS BEEN ADVISED OF THE POSSIBILITY OF SUCH DAMAGES. IN NO CASE SHALL LOGITECH'S LIABILITY EXCEED THE ACTUAL MONEY PAID FOR THE PRODUCTS AT ISSUE. Because some jurisdictions do not allow the limitation of implied warranties or liability for incidental, consequential, special, or indirect damages, the above limitation may not always apply. The above limitations will not apply in case of personal injury where and to the extent that applicable law requires such liability.

U.S. Government Restricted Rights. The Software is provided to the U.S. Government only with restricted rights and limited rights. Use, duplication, or disclosure by the U.S. Government is subject to restrictions set forth in 48 C.F.R. 2.101 (October 1995), consisting of "Commercial Computer Software" and "Commercial Computer Software Documentation" as such terms are used in 48 C.F.R. 12.212 (September 1995), and in FAR Sections 52-227-14 and 52-227-19 or DFARS Section 52.227-7013 (C) (1) (ii), or their successors, as applicable. Consistent with 48 C.F.R. 12.212 and 48 C.F.R. 227.7202-1 through 227.7204-4 (June 1995), or any successor regulations, this Software is provided to U.S. Government users pursuant to the terms and conditions herein. Contractor/Manufacturer is Logitech Inc., 6505 Kaiser Drive, Fremont, CA 94555.

FCC Compliance and Advisory Statement. This hardware device complies with Part 15 of the FCC Rules. Operation is subject to the following two conditions: 1) this device may not cause harmful interference, and 2) this device must accept any interference received, including interference that may cause undesired operation. This equipment has been tested and found to comply with the limits for a Class B digital device, pursuant to Part 15 of the FCC Rules. These limits are designed to provide reasonable protection against harmful interference in a residential installation. This equipment generates, uses, and can radiate radio frequency energy and, if not installed or used in accordance with the instructions, may cause harmful interference to radio communications. However, there is no guarantee that interference will not occur in a particular installation. If this equipment does cause harmful interference to radio or television reception, which can be determined by turning the equipment off and on, the user is encouraged to try to correct the interference by one or more of the following measures: 1) reorient or relocate the receiving antenna; 2) increase the separation between the equipment and the receiver; 3) connect the equipment to an outlet on a circuit different from that to which the receiver is connected; 4) consult the dealer or an experienced radio/TV technician for help. Any changes or modifications not expressly approved by the party responsible for compliance could void the user's authority to operate the equipment. Where shielded interface cables have been provided with the product or specified additional components or accessories elsewhere defined to be used with the installation of the product, they must be used in order to ensure compliance with FCC regulations.

Canadian DOC Statement. This digital device does not exceed the Class B limits for radio noise emissions from digital apparatus specified in the interference-causing equipment standard entitled "Digital Apparatus," ICES-003 of the Department of Communications.

Cet appareil numérique respecte les limites bruits radioélectriques applicables aux appareils numériques de Classe B prescrites dans la norme sur le matériel brouilleur: "Appareils Numériques," NMB-003 édictée par le Ministère des Communications.

This device complies with RSS-210 of Industry and Science Canada. Operation is subject to the following two conditions: 1) this device may not cause interference, and 2) this device must accept any interference, including interference that may cause undesired operation of the device. Transmitter frequency: 26.995; 27.045; 27.145; 27.195 MHz. Power Output: < 10mV/m @ 3m.

Mouse: First Mouse™

© 2000 Logitech. All Rights Reserved. Logitech, the Logitech logo, and other Logitech marks are owned by Logitech and may be registered. All other trademarks are the property of their respective owners. Logitech assumes no responsibility for any errors that may appear in this manual. Information contained herein is subject to change without notice.

Software License Agreement. LOGITECH IS WILLING TO LICENSE THE ENCLOSED SOFTWARE TO YOU ONLY ON THE CONDITION THAT YOU ACCEPT ALL OF THE TERMS CONTAINED IN THIS LICENSE AGREEMENT. **This is a legal agreement between you (either an individual end-user or an entity) and Logitech. By opening the software package, you are agreeing to be bound by the terms and conditions of the Agreement. If you do not agree to the terms of this Agreement, promptly return the software package and other items that are part of this product in their original package with your payment receipt to your point of purchase for a full refund.** **Grant of License.** Logitech and its suppliers grant you a nonexclusive license to use one copy of the enclosed software program ("Software") on one computer only with the Logitech product you have purchased. No other rights are granted. The Software is in use if it is loaded on the computer's permanent or temporary memory. For backup purposes only, you may make one copy of the Software. You must include on the backup copy all copyright and other notices included on the Software as supplied by Logitech. Installation on a network server for the sole purpose of your internal distribution of the Software is permitted only if you have purchased an individual Software package for each networked computer to which the Software is distributed.

Restrictions. Logitech and its suppliers retain ownership of the Software. You shall not decompile, disassemble, reverse-engineer, or modify the Software in any way. You may not transmit the Software over a network (except as expressly permitted above), by telephone, or electronically using any means. You may not transfer the Software except upon a permanent transfer of the enclosed Logitech product provided that all Software updates are included in the transfer, you do not retain a copy of the Software, and the transferee agrees to be bound by the terms and conditions in this license. Upon any violation of any of the provisions of this Agreement, rights to use the Software shall automatically terminate and the Software must be returned to Logitech or all copies of the Software destroyed.

Limited Product Warranty. Logitech warrants that the hardware accompanying this documentation shall be free from significant defects in material and workmanship for a period of two years from the date of purchase. Logitech also warrants that the software accompanying this documentation will perform substantially in accordance with the documentation for a period of 90 days from the date of purchase. Logitech's hardware and software warranty is nontransferable and is limited to the original purchaser.

Product Remedies. Logitech's entire liability and the Licensee's exclusive remedy for any breach of warranty, shall be, at Logitech's option, either (a) return of the price paid or (b) repair or replacement of the hardware or software, provided that the hardware or software is returned to the point of purchase, with a copy of the sales receipt. Any replacement hardware or software will be warranted for the remainder of the original warranty period or 30 days for the hardware and 30 days for the software, whichever is longer. These remedies are void if failure of the hardware or software has resulted from accident, abuse, or misapplication.

LIMITATION OF LIABILITY. THE WARRANTIES SET FORTH IN THIS AGREEMENT REPLACE ALL OTHER WARRANTIES. LOGITECH EXPRESSLY DISCLAIMS ALL OTHER WARRANTIES, INCLUDING, BUT NOT LIMITED TO, THE IMPLIED WARRANTIES OF MERCHANTABILITY AND FITNESS FOR A PARTICULAR PURPOSE AND NONINFRINGEMENT OF THIRD-PARTY RIGHTS WITH RESPECT TO THE DOCUMENTATION, SOFTWARE, AND HARDWARE. NO LOGITECH DEALER, AGENT, OR EMPLOYEE IS AUTHORIZED TO MAKE ANY MODIFICATION, EXTENSION, OR ADDITION TO THIS WARRANTY. IN NO EVENT WILL LOGITECH OR ITS SUPPLIERS BE LIABLE FOR ANY COSTS OF PROCUREMENT OF SUBSTITUTE PRODUCTS OR SERVICES, LOST PROFITS, LOSS OF INFORMATION OR DATA, OR ANY OTHER SPECIAL, INDIRECT, CONSEQUENTIAL, OR INCIDENTAL DAMAGES ARISING IN ANY WAY OUT OF THE SALE OF, USE OF, OR INABILITY TO USE ANY LOGITECH PRODUCT OR SERVICE, EVEN IF LOGITECH HAS BEEN ADVISED OF THE POSSIBILITY OF SUCH DAMAGES. IN NO CASE SHALL LOGITECH'S LIABILITY EXCEED THE ACTUAL MONEY PAID FOR THE PRODUCTS AT ISSUE. Because some jurisdictions do not allow the limitation of implied warranties or liability for incidental, consequential, special, or indirect damages, the above limitation may not always apply. The above limitations will not apply in case of personal injury where and to the extent that applicable law requires such liability.

U.S. Government Restricted Rights. The Software is provided to the U.S. Government only with restricted rights and limited rights. Use, duplication, or disclosure by the U.S. Government is subject to restrictions set forth in 48 C.F.R. 2.101 (October 1995), consisting of "Commercial Computer Software" and "Commercial Computer Software Documentation" as such terms are used in 48 C.F.R. 12.212 (September 1995), and in FAR Sections 52-227-14 and 52-227-19 or DFARS Section 52.227-7013 (C) (1) (ii), or their successors, as applicable. Consistent with 48 C.F.R. 12.212 and 48 C.F.R. 227.7202-1 through 227.7204-4 (June 1995), or any successor regulations, this Software is provided to U.S. Government users pursuant to the terms and conditions herein. Contractor/Manufacturer is Logitech Inc., 6505 Kaiser Drive, Fremont, CA 94555.

FCC Compliance and Advisory Statement. This hardware device complies with Part 15 of the FCC Rules. Operation is subject to the following two conditions: 1) this device may not cause harmful interference, and 2) this device must accept any interference received, including interference that may cause undesired operation. This equipment has been tested and found to comply with the limits for a Class B digital device, pursuant to Part 15 of the FCC Rules. These limits are designed to provide reasonable protection against harmful interference in a residential installation. This equipment generates, uses, and can radiate radio frequency energy and, if not installed or used in accordance with the instructions, may cause harmful interference to radio communications. However, there is no guarantee that interference will not occur in a particular installation. If this equipment does cause harmful interference to radio or television reception, which can be determined by turning the equipment off and on, the user is encouraged to try to correct the interference by one or more of the following measures: 1) reorient or relocate the receiving antenna; 2) increase the separation between the equipment and the receiver; 3) connect the equipment to an outlet on a circuit different from that to which the receiver is connected; 4) consult the dealer or an experienced radio/TV technician for help. Any changes or modifications not expressly approved by the party responsible for compliance could void the user's authority to operate the equipment. Where shielded interface cables have been provided with the product or specified additional components or accessories elsewhere defined to be used with the installation of the product, they must be used in order to ensure compliance with FCC regulations.

Canadian DOC Statement. This digital device does not exceed the Class B limits for radio noise emissions from digital apparatus specified in the interference-causing equipment standard entitled "Digital Apparatus," ICES-003 of the Department of Communications. Cet appareil numérique respecte les limites bruits radioélectriques applicables aux appareils numériques de Classe B prescrites dans la norme sur le matériel brouilleur: "Appareils Numériques," NMB-003 édictée par le Ministère des Communications.

This device complies with RSS-210 of Industry and Science Canada. Operation is subject to the following two conditions: 1) this device may not cause interference, and 2) this device must accept any interference, including interference that may cause undesired operation of the device.

Mouse: First Mouse™ 3 Button

© 2000 Logitech. All Rights Reserved. Logitech, the Logitech logo, and other Logitech marks are owned by Logitech and may be registered. All other trademarks are the property of their respective owners. Logitech assumes no responsibility for any errors that may appear in this manual. Information contained herein is subject to change without notice.

Software License Agreement. LOGITECH IS WILLING TO LICENSE THE ENCLOSED SOFTWARE TO YOU ONLY ON THE CONDITION THAT YOU ACCEPT ALL OF THE TERMS CONTAINED IN THIS LICENSE AGREEMENT. **This is a legal agreement between you (either an individual end-user or an entity) and Logitech. By opening the software package, you are agreeing to be bound by the terms and conditions of the Agreement. If you do not agree to the terms of this Agreement, promptly return the software package and other items that are part of this product in their original package with your payment receipt to your point of purchase for a full refund.** **Grant of License.** Logitech and its suppliers grant you a nonexclusive license to use one copy of the enclosed software program ("Software") on one computer only with the Logitech product you have purchased. No other rights are granted. The Software is in use if it is loaded on the computer's permanent or temporary memory. For backup purposes only, you may make one copy of the Software. You must include on the backup copy all copyright and other notices included on the Software as supplied by Logitech. Installation on a network server for the sole purpose of your internal distribution of the Software is permitted only if you have purchased an individual Software package for each networked computer to which the Software is distributed.

Restrictions. Logitech and its suppliers retain ownership of the Software. You shall not decompile, disassemble, reverse-engineer, or modify the Software in any way. You may not transmit the Software over a network (except as expressly permitted above), by telephone, or electronically using any means. You may not transfer the Software except upon a permanent transfer of the enclosed Logitech product provided that all Software updates are included in the transfer, you do not retain a copy of the Software, and the transferee agrees to be bound by the terms and conditions in this license. Upon any violation of any of the provisions of this Agreement, rights to use the Software shall automatically terminate and the Software must be returned to Logitech or all copies of the Software destroyed.

Limited Product Warranty. Logitech warrants that the hardware accompanying this documentation shall be free from significant defects in material and workmanship for a period of two years from the date of purchase. Logitech also warrants that the software accompanying this documentation will perform substantially in accordance with the documentation for a period of 90 days from the date of purchase. Logitech's hardware and software warranty is nontransferable and is limited to the original purchaser.

Product Remedies. Logitech's entire liability and the Licensee's exclusive remedy for any breach of warranty, shall be, at Logitech's option, either (a) return of the price paid or (b) repair or replacement of the hardware or software, provided that the hardware or software is returned to the point of purchase, with a copy of the sales receipt. Any replacement hardware or software will be warranted for the remainder of the original warranty period or 30 days for the hardware and 30 days for the software, whichever is longer. These remedies are void if failure of the hardware or software has resulted from accident, abuse, or misapplication.

LIMITATION OF LIABILITY. THE WARRANTIES SET FORTH IN THIS AGREEMENT REPLACE ALL OTHER WARRANTIES. LOGITECH EXPRESSLY DISCLAIMS ALL OTHER WARRANTIES, INCLUDING, BUT NOT LIMITED TO, THE IMPLIED WARRANTIES OF MERCHANTABILITY AND FITNESS FOR A PARTICULAR PURPOSE AND NONINFRINGEMENT OF THIRD-PARTY RIGHTS WITH RESPECT TO THE DOCUMENTATION, SOFTWARE, AND HARDWARE. NO LOGITECH DEALER, AGENT, OR EMPLOYEE IS AUTHORIZED TO MAKE ANY MODIFICATION, EXTENSION, OR ADDITION TO THIS WARRANTY. IN NO EVENT WILL LOGITECH OR ITS SUPPLIERS BE LIABLE FOR ANY COSTS OF PROCUREMENT OF SUBSTITUTE PRODUCTS OR SERVICES, LOST PROFITS, LOSS OF INFORMATION OR DATA, OR ANY OTHER SPECIAL, INDIRECT, CONSEQUENTIAL, OR INCIDENTAL DAMAGES ARISING IN ANY WAY OUT OF THE SALE OF, USE OF, OR INABILITY TO USE ANY LOGITECH PRODUCT OR SERVICE, EVEN IF LOGITECH HAS BEEN ADVISED OF THE POSSIBILITY OF SUCH DAMAGES. IN NO CASE SHALL LOGITECH'S LIABILITY EXCEED THE ACTUAL MONEY PAID FOR THE PRODUCTS AT ISSUE. Because some jurisdictions do not allow the limitation of implied warranties or liability for incidental, consequential, special, or indirect damages, the above limitation may not always apply. The above limitations will not apply in case of personal injury where and to the extent that applicable law requires such liability.

U.S. Government Restricted Rights. The Software is provided to the U.S. Government only with restricted rights and limited rights. Use, duplication, or disclosure by the U.S. Government is subject to restrictions set forth in 48 C.F.R. 2.101 (October 1995), consisting of "Commercial Computer Software" and "Commercial Computer Software Documentation" as such terms are used in 48 C.F.R. 12.212 (September 1995), and in FAR Sections 52-227-14 and 52-227-19 or DFARS Section 52.227-7013 (C) (1) (ii), or their successors, as applicable. Consistent with 48 C.F.R. 12.212 and 48 C.F.R. 227.7202-1 through 227.7204-4 (June 1995), or any successor regulations, this Software is provided to U.S. Government users pursuant to the terms and conditions herein. Contractor/Manufacturer is Logitech Inc., 6505 Kaiser Drive, Fremont, CA 94555.

FCC Compliance and Advisory Statement. This hardware device complies with Part 15 of the FCC Rules. Operation is subject to the following two conditions: 1) this device may not cause harmful interference, and 2) this device must accept any interference received, including interference that may cause undesired operation. This equipment has been tested and found to comply with the limits for a Class B digital device, pursuant to Part 15 of the FCC Rules. These limits are designed to provide reasonable protection against harmful interference in a residential installation. This equipment generates, uses, and can radiate radio frequency energy and, if not installed or used in accordance with the instructions, may cause harmful interference to radio communications. However, there is no guarantee that interference will not occur in a particular installation. If this equipment does cause harmful interference to radio or television reception, which can be determined by turning the equipment off and on, the user is encouraged to try to correct the interference by one or more of the following measures: 1) reorient or relocate the receiving antenna; 2) increase the separation between the equipment and the receiver; 3) connect the equipment to an outlet on a circuit different from that to which the receiver is connected; 4) consult the dealer or an experienced radio/TV technician for help. Any changes or modifications not expressly approved by the party responsible for compliance could void the user's authority to operate the equipment. Where shielded interface cables have been provided with the product or specified additional components or accessories elsewhere defined to be used with the installation of the product, they must be used in order to ensure compliance with FCC regulations.

Canadian DOC Statement. This digital device does not exceed the Class B limits for radio noise emissions from digital apparatus specified in the interference-causing equipment standard entitled "Digital Apparatus," ICES-003 of the Department of Communications. Cet appareil numérique respecte les limites bruits radioélectriques applicables aux appareils numériques de Classe B prescrites dans la norme sur le matériel brouilleur: "Appareils Numériques," NMB-003 édictée par le Ministère des Communications.

This device complies with RSS-210 of Industry and Science Canada. Operation is subject to the following two conditions: 1) this device may not cause interference, and 2) this device must accept any interference, including interference that may cause undesired operation of the device.

Mouse: First Mouse Wheel

© 2000 Logitech. All Rights Reserved. Logitech, the Logitech logo, and other Logitech marks are owned by Logitech and may be registered. All other trademarks are the property of their respective owners. Logitech assumes no responsibility for any errors that may appear in this manual. Information contained herein is subject to change without notice.

Software License Agreement. LOGITECH IS WILLING TO LICENSE THE ENCLOSED SOFTWARE TO YOU ONLY ON THE CONDITION THAT YOU ACCEPT ALL OF THE TERMS CONTAINED IN THIS LICENSE AGREEMENT. **This is a legal agreement between you (either an individual end-user or an entity) and Logitech. By opening the software package, you are agreeing to be bound by the terms and conditions of the Agreement. If you do not agree to the terms of this Agreement, promptly return the software package and other items that are part of this product in their original package with your payment receipt to your point of purchase for a full refund.** **Grant of License.** Logitech and its suppliers grant you a nonexclusive license to use one copy of the enclosed software program ("Software") on one computer only with the Logitech product you have purchased. No other rights are granted. The Software is in use if it is loaded on the computer's permanent or temporary memory. For backup purposes only, you may make one copy of the Software. You must include on the backup copy all copyright and other notices included on the Software as supplied by Logitech. Installation on a network server for the sole purpose of your internal distribution of the Software is permitted only if you have purchased an individual Software package for each networked computer to which the Software is distributed.

Restrictions. Logitech and its suppliers retain ownership of the Software. You shall not decompile, disassemble, reverse-engineer, or modify the Software in any way. You may not transmit the Software over a network (except as expressly permitted above), by telephone, or electronically using any means. You may not transfer the Software except upon a permanent transfer of the enclosed Logitech product provided that all Software updates are included in the transfer; you do not retain a copy of the Software, and the transferee agrees to be bound by the terms and conditions in this license. Upon any violation of any of the provisions of this Agreement, rights to use the Software shall automatically terminate and the Software must be returned to Logitech or all copies of the Software destroyed.

Limited Product Warranty. Logitech warrants that the hardware accompanying this documentation shall be free from significant defects in material and workmanship for a period of two years from the date of purchase. Logitech also warrants that the software accompanying this documentation will perform substantially in accordance with the documentation for a period of 90 days from the date of purchase. Logitech's hardware and software warranty is nontransferable and is limited to the original purchaser.

Product Remedies. Logitech's entire liability and the Licensee's exclusive remedy for any breach of warranty, shall be, at Logitech's option, either (a) return of the price paid or (b) repair or replacement of the hardware or software, provided that the hardware or software is returned to the point of purchase, with a copy of the sales receipt. Any replacement hardware or software will be warranted for the remainder of the original warranty period or 30 days for the hardware and 30 days for the software, whichever is longer. These remedies are void if failure of the hardware or software has resulted from accident, abuse, or misapplication.

LIMITATION OF LIABILITY. THE WARRANTIES SET FORTH IN THIS AGREEMENT REPLACE ALL OTHER WARRANTIES. LOGITECH EXPRESSLY DISCLAIMS ALL OTHER WARRANTIES, INCLUDING, BUT NOT LIMITED TO, THE IMPLIED WARRANTIES OF MERCHANTABILITY AND FITNESS FOR A PARTICULAR PURPOSE AND NON-INFRINGEMENT OF THIRD-PARTY RIGHTS WITH RESPECT TO THE DOCUMENTATION, SOFTWARE, AND HARDWARE. NO LOGITECH DEALER, AGENT, OR EMPLOYEE IS AUTHORIZED TO MAKE ANY MODIFICATION, EXTENSION, OR ADDITION TO THIS WARRANTY. IN NO EVENT WILL LOGITECH OR ITS SUPPLIERS BE LIABLE FOR ANY COSTS OF PROCUREMENT OF SUBSTITUTE PRODUCTS OR SERVICES, LOST PROFITS, LOSS OF INFORMATION OR DATA, OR ANY OTHER SPECIAL, INDIRECT, CONSEQUENTIAL, OR INCIDENTAL DAMAGES ARISING IN ANY WAY OUT OF THE SALE OF, USE OF, OR INABILITY TO USE ANY LOGITECH PRODUCT OR SERVICE, EVEN IF LOGITECH HAS BEEN ADVISED OF THE POSSIBILITY OF SUCH DAMAGES. IN NO CASE SHALL LOGITECH'S LIABILITY EXCEED THE ACTUAL MONEY PAID FOR THE PRODUCTS AT ISSUE. Because some jurisdictions do not allow the limitation of implied warranties or liability for incidental, consequential, special, or indirect damages, the above limitation may not always apply. The above limitations will not apply in case of personal injury where and to the extent that applicable law requires such liability.

U.S. Government Restricted Rights. The Software is provided to the U.S. Government only with restricted rights and limited rights. Use, duplication, or disclosure by the U.S. Government is subject to restrictions set forth in 48 C.F.R. 2.101 (October 1995), consisting of "Commercial Computer Software" and "Commercial Computer Software Documentation" as such terms are used in 48 C.F.R. 12.212 (September 1995), and in FAR Sections 52-227-14 and 52-227-19 or DFARS Section 52.227-7013 (C) (1) (ii), or their successors, as applicable. Consistent with 48 C.F.R. 12.212 and 48 C.F.R. 227.7202-1 through 227.7204-4 (June 1995), or any successor regulations, this Software is provided to U.S. Government users pursuant to the terms and conditions herein. Contractor/Manufacturer is Logitech Inc., 6505 Kaiser Drive, Fremont, CA 94555.

FCC Compliance and Advisory Statement. This hardware device complies with Part 15 of the FCC Rules. Operation is subject to the following two conditions: 1) this device may not cause harmful interference, and 2) this device must accept any interference received, including interference that may cause undesired operation. This equipment has been tested and found to comply with the limits for a Class B digital device, pursuant to Part 15 of the FCC Rules. These limits are designed to provide reasonable protection against harmful interference in a residential installation. This equipment generates, uses, and can radiate radio frequency energy and, if not installed or used in accordance with the instructions, may cause harmful interference to radio communications. However, there is no guarantee that interference will not occur in a particular installation. If this equipment does cause harmful interference to radio or television reception, which can be determined by turning the equipment off and on, the user is encouraged to try to correct the interference by one or more of the following measures: 1) reorient or relocate the receiving antenna; 2) increase the separation between the equipment and the receiver; 3) connect the equipment to an outlet on a circuit different from that to which the receiver is connected; 4) consult the dealer or an experienced radio/TV technician for help. Any changes or modifications not expressly approved by the party responsible for compliance could void the user's authority to operate the equipment. Where shielded interface cables have been provided with the product or specified additional components or accessories elsewhere defined to be used with the installation of the product, they must be used in order to ensure compliance with FCC regulations.

Canadian DOC Statement. This digital device does not exceed the Class B limits for radio noise emissions from digital apparatus specified in the interference-causing equipment standard entitled "Digital Apparatus," ICES-003 of the Department of Communications.

Cet appareil numérique respecte les limites bruits radioélectriques applicables aux appareils numériques de Classe B prescrites dans la norme sur le matériel brouilleur: "Appareils Numériques," NMB-003 édictée par le Ministère des Communications.

This device complies with RSS-210 of Industry and Science Canada. Operation is subject to the following two conditions: 1) this device may not cause interference, and 2) this device must accept any interference, including interference that may cause undesired operation of the device.